



Erratum

Genome Res. 2010 20: 874

License

Email Alerting Service

Receive free email alerts when new articles cite this article - sign up in the box at the top right corner of the article or [click here](#).



To subscribe to *Genome Research* go to:
<https://genome.cshlp.org/subscriptions>

Copyright © 2010 by Cold Spring Harbor Laboratory Press

Erratum

Genome Research 17: 594–601 (2007)

The mode and tempo of genome size evolution in eukaryotes

Matthew J. Oliver, Dmitri Petrov, David Ackerly, Paul Falkowski, and Oscar M. Schofield

The authors have discovered an error in their interpretation of the chicken red blood cell (CRBC) unit from the Veldhuis et al. 1997 paper (Cellular DNA content of marine phytoplankton using two new fluorochromes: Taxonomic and ecological implications. *J Phycol* **33**: 527–541) for converting between genome size and stain intensity. Originally, they multiplied the stain intensity by the 2.33 conversion unit, when it should have been divided by 2.33 to obtain genome size.

This affects 55 of the 168 genome sizes used in the published analysis. Correct genome sizes are listed in the revised Supplemental Table 1 (<http://genome.cshlp.org/content/17/5/594/suppl/DC1>), and the analysis using corrected genome size data is shown in revised Figures 2B and 4B (below; presented in the original paper on pages 597 and 598, respectively). The impact on the interpretation of the data is unchanged due to the range of genome sizes considered, and the statistical analyses that were significant or insignificant remain significant or insignificant, respectively, using the corrected genome size data.

The authors apologize for any confusion this may have caused.

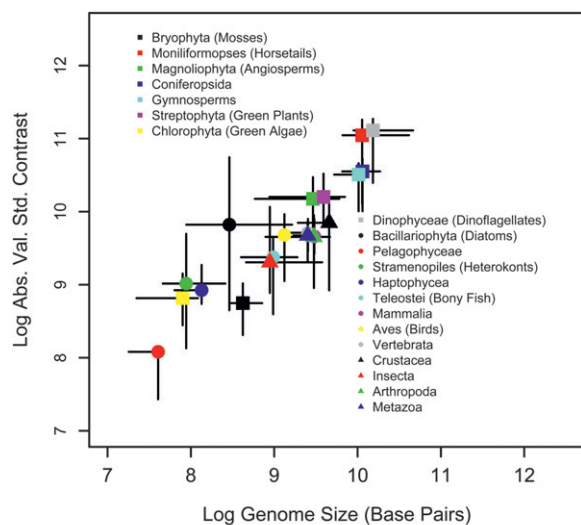


Figure 2B

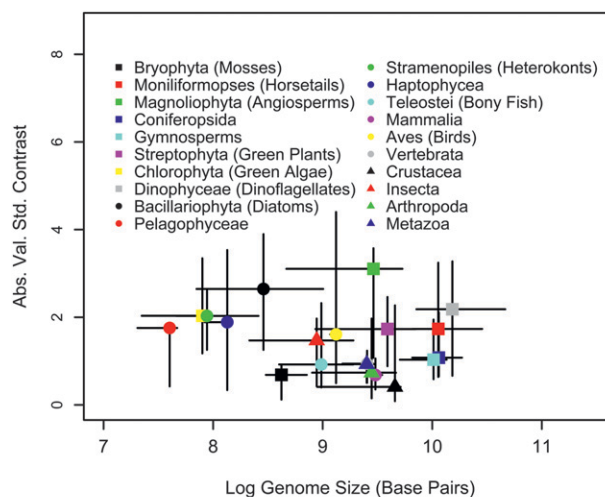


Figure 4B