



## Chromosomal mapping of 170 BAC clones in the ascidian *Ciona intestinalis*

Eiichi Shoguchi, Takeshi Kawashima, Yutaka Satou, et al.

*Genome Res.* 2006 16: 297-303

Access the most recent version at doi:[10.1101/gr.4156606](https://doi.org/10.1101/gr.4156606)

---

**References** This article cites 15 articles, 5 of which can be accessed free at:  
<http://genome.cshlp.org/content/16/2/297.full.html#ref-list-1>

### License

**Email Alerting Service** Receive free email alerts when new articles cite this article - sign up in the box at the top right corner of the article or [click here](#).

---

An advertisement banner with a teal background. On the left, the text reads "CRISPR and RNAi Genetic Screening. Your new superpower." In the center is a white box with the text "LEARN MORE". On the right is a woman in a red and white superhero costume with a red mask, and the Cellecta logo, which consists of a cluster of green dots and the word "CELLECTA" below it.

---

To subscribe to *Genome Research* go to:  
<https://genome.cshlp.org/subscriptions>

---

Cold Spring Harbor Laboratory Press

# Chromosomal mapping of 170 BAC clones in the ascidian *Ciona intestinalis*

Eiichi Shoguchi,<sup>1,2,6,7</sup> Takeshi Kawashima,<sup>1,6</sup> Yutaka Satou,<sup>1,6</sup> Makoto Hamaguchi,<sup>1</sup> Tadasu Sin-I,<sup>3</sup> Yuji Kohara,<sup>3</sup> Nik Putnam,<sup>4</sup> Daniel S. Rokhsar,<sup>4,5</sup> and Nori Satoh<sup>1,2</sup>

<sup>1</sup>Department of Zoology, Graduate School of Science, Kyoto University, Sakyo-ku, Kyoto 606-8502, Japan; <sup>2</sup>CREST, Japan Science and Technology Agency, Kawaguchi, Saitama 332-0012, Japan; <sup>3</sup>National Institute of Genetics, Mishima, Shizuoka 411-8540, Japan; <sup>4</sup>U.S. Department of Energy Joint Genome Institute, Walnut Creek, California 94598, USA; <sup>5</sup>Center for Integrative Genomics, Department of Cell and Molecular Biology, University of California at Berkeley, Berkeley, California 94720, USA

The draft genome (~160 Mb) of the urochordate ascidian *Ciona intestinalis* has been sequenced by the whole-genome shotgun method and should provide important insights into the origin and evolution of chordates as well as vertebrates. However, because this genomic data has not yet been mapped onto chromosomes, important biological questions including regulation of gene expression at the genome-wide level cannot yet be addressed. Here, we report the molecular cytogenetic characterization of all 14 pairs of *C. intestinalis* chromosomes, as well as initial large-scale mapping of genomic sequences onto chromosomes by fluorescent in situ hybridization (FISH). Two-color FISH using 170 bacterial artificial chromosome (BAC) clones and construction of joined scaffolds using paired BAC end sequences allowed for mapping of up to 65% of the deduced 117-Mb nonrepetitive sequence onto chromosomes. This map lays the foundation for future studies of the protochordate *C. intestinalis* genome at the chromosomal level.

[Supplemental material is available online at [www.genome.org](http://www.genome.org).]

*Ciona intestinalis* is one of the most extensively studied ascidian species and is of particular phylogenetic importance for studying the molecular mechanisms underlying the origin and evolution of chordates and vertebrates (Cameron et al. 2000; Satoh 2003). In addition to having a basic chordate body plan and a compact genome, ascidians provide a simple experimental system for investigating gene networks involved in pattern formation and cell-fate specification during chordate development (Satoh 1994, 2003; Jeffery 2001; Nishida 2002).

As a result of these advantages, many efforts have been made in recent years toward developing genomic resources for *C. intestinalis*. The *C. intestinalis* genome has been sequenced using the whole-genome shotgun method (Dehal et al. 2002), and eightfold redundant coverage of the genome using random paired-end sequences was generated at the DOE Joint Genome Institute (JGI). Together with sequence data for nearly 480,000 ESTs and 5647 full-length cDNAs from Kyoto University and the National Institute of Genetics (Japan) (Satou et al. 2002), this has permitted the assembly of 2501 scaffolds longer than 3 kb. A total of 60 Mb, or half the assembly, was reconstructed into 177 scaffolds longer than 190 kb, and more than 85% of the assembled sequence was in 905 scaffolds longer than 20 kb. From these data, it is estimated that ~160 Mb of the *C. intestinalis* genome is composed of a euchromatic sequence containing 15,852 protein-coding genes (117 Mb), as well as rDNA repeats and other repetitive sequences (Dehal et al. 2002; <http://genome.jgi-psf.org/ciona4/ciona4.home.html>).

Facilitating the construction of physical maps is the generation of large-insert genomic libraries, which have the advantage of being clone-based. *C. intestinalis* BAC libraries are readily avail-

able (Kobayashi et al. 2002), with 6150 clones already end-sequenced by the National Institute of Genetics (Japan) and reported in the data set of the *Ciona* draft genome (Dehal et al. 2002). The BAC libraries are available from Kyoto University (<http://hoya.zool.kyoto-u.ac.jp/cgi-bin/gbrowse/ci>). Together with an additional 148 BAC end sequences (BESs) that were analyzed during the sequencing process, this has generated a set of 12,448 raw sequences (6224 paired BAC end sequences) that are now available in the Ghost database (<http://hoya.zool.kyoto-u.ac.jp/cgi-bin/gbrowse/ci>). However, the assignment of every BES to scaffolds using a high-stringency assembly program is difficult, because polymorphisms and repeat sequences cause multiple end matches to several different scaffolds (e.g., Vinson et al. 2005). Recently, the genomic sequence for another *Ciona* species, *Ciona savignyi*, was made available on the internet (<http://www.broad.mit.edu/annotation/ciona/>). These data have already made it possible to compare sequences in regulatory regions between the two *Ciona* species (Johnson et al. 2004; Kusakabe et al. 2004).

While this sequence information represents an important and valuable resource, in the absence of a genetic context, the system remains largely inaccessible to genome-wide approaches to answering various biological questions. For example, the draft genome has not yet been mapped onto chromosomes, and the assembly of whole-genome shotgun sequences is still fragmented. *C. intestinalis* has 28 ( $n = 14$ ) chromosomes (Colombera and Lazzaretto-Colombera 1978). We previously established a method of two-color fluorescent in situ hybridization (FISH) in *Ciona* (Shoguchi et al. 2004) and observed that counterstaining of *Ciona* chromosome preparations with DAPI made it possible to recognize the centromere, although the other banding landmarks were not observed (Shoguchi et al. 2004). We also identified 20 metacentric chromosomes and eight submetacentric or subtelocentric chromosomes in our karyotype analysis of *Ciona* chromosomes (Shoguchi et al. 2005). The largest pair of meta-

<sup>6</sup>These authors contributed equally to this work.

<sup>7</sup>Corresponding author.

E-mail [eiichi@ascidian.zool.kyoto-u.ac.jp](mailto:eiichi@ascidian.zool.kyoto-u.ac.jp); fax 81-75-705-1113.

Article published online ahead of print. Article and publication date are at <http://www.genome.org/cgi/doi/10.1101/gr.4156606>.

centric chromosomes was named chromosome 1, while the largest pair of submetacentric/subtelocentric chromosomes was named chromosome 2. However, the small size of the chromosomes (most pairs measuring <2  $\mu\text{m}$ ) and morphological polymorphisms made accurate pairing of the other chromosomes difficult, so that a precise karyotype was not feasible based on morphology alone. In further studies (Shoguchi et al. 2005), FISH with bacterial artificial chromosome (BAC) clones containing rDNA clusters, as well as staining of chromosome preparations with propidium iodide indicated that 18S/28S ribosomal gene repeats are present on the short arms of three pairs of chromosomes, and that these short arms show remarkable size polymorphism. In addition, each chromosome was characterized by FISH with a representative BAC clone, although we could not reach a final determination of the karyotype (Shoguchi et al. 2005).

Here, we report further molecular cytogenetic characterization of the 14 pairs of *C. intestinalis* chromosomes and initial large-scale mapping of genomic sequences onto chromosomes by FISH. Using scaffolds that were manually constructed with 6224 paired BAC end sequences, we carried out two-color FISH for a total of 170 BAC clones, which represent larger scaffolds released from JGI as *C. intestinalis* genome ver. 1. The publicized *C. savignyi* genome sequences on the Web site were also referenced to select the clones and to make efficient mapping. As a result, we were able to map up to 65% of the nonrepetitive genome sequence onto chromosomes. This map provides useful resources for sequencing entire genomes and is available online at <http://hoya.zool.kyoto-u.ac.jp/chromosomeall.html>.

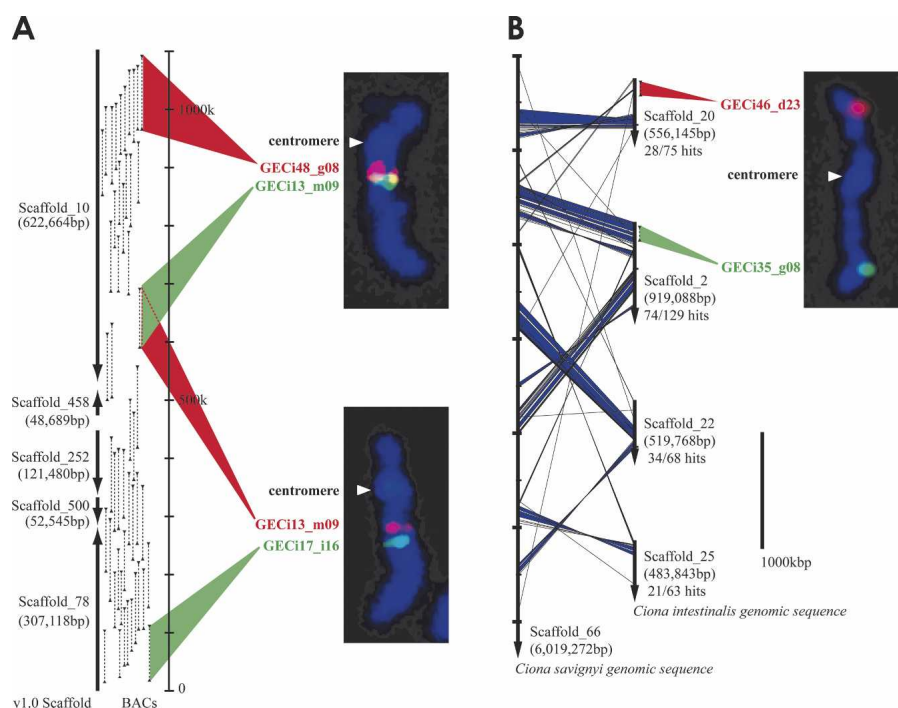
## Results and Discussion

### Efficient mapping of selected BAC clones by two-color FISH

A total of 170 BAC clones were used to map *C. intestinalis* genomic sequence onto chromosomes (for selected BAC clones, see Supplemental Table S1). We selected 139 BAC clones to cover 100 of the largest scaffolds assembled in the *Ciona* draft genome (v. 1.0) (Scaffold\_1 to Scaffold\_100), and another set of 23 BAC clones was selected to increase the accuracy of the scaffolds joined by BAC end sequencing (BES). The remaining eight BAC clones were selected because they were expected to map to chromosome regions that were not targeted by the other 162 clones.

First, to increase the accuracy of mapping and to avoid confusion arising from potential cross-well contamination of clones and other artifacts, we selected two clones for each of the major scaffolds

(for example, GECi48\_g08 and GECi13\_m09 for Scaffold\_10, Fig. 1A). In a previous study, each chromosome was characterized by FISH with a representative BAC clone (Shoguchi et al. 2005). To use these data efficiently and to collect two-color FISH data for all 14 chromosomes, we made use of two informational resources, i.e., a database compiling the end sequences of *C. intestinalis* BACs (<http://hoya.zool.kyoto-u.ac.jp/cgi-bin/gbrowse/ci>) and the sequenced genome of *C. savignyi* (<http://www.broad.mit.edu/annotation/ciona/>). The paired end sequences of 6224 BAC clones were used to join scaffolds from the JGI database (<http://genome.jgi-psf.org/ciona4/ciona4.home.html>). Because the strict parameters used in computational assembly of genomic sequences with a high degree of polymorphism would be expected to leave unjoined those scaffolds assembled by the paired BESs, we constructed manually joined scaffolds by using paired BESs, starting from the larger scaffolds. For



**Figure 1.** Strategy for mapping BAC clones to chromosomes. (A) Correspondence between the distribution of BAC end sequences (BESs) on joined scaffolds and the cytogenetic location of FISH signals. The construction of joined scaffolds was performed using paired BAC end sequences. The left arrows indicate joined scaffolds from version 1.0 of the *C. intestinalis* draft genome. The regions of paired BAC end sequences corresponding to each scaffold are indicated by black triangles and are connected by dashed lines. For example, Scaffold\_10 and Scaffold\_458 are joined by two paired BAC end sequences in a tail-to-tail arrangement. Two-color FISH was performed using GECi48\_g08 (red) and GECi13\_m09 (green) BACs. The distribution of BESs on joined scaffolds indicates a gap of about 300 kb between the two clones, which gives an indication of the resolution achieved by FISH. GECi13\_m09 (red) and GECi17\_i16 (green) were also found to hybridize to the same chromosome. The cytogenetic locations of FISH signals correlate well to a first approximation with the order of joined scaffolds (Scaffold\_10, Scaffold\_458, Scaffold\_252, Scaffold\_500, and Scaffold\_78). (B) A sample result from comparison of *C. intestinalis* and *C. savignyi* sequences. The vertical arrows represent scaffolds of the draft genomes (left) *C. savignyi*; (right) *C. intestinalis*. Diagonal lines connect best hit regions as determined by a FASTA comparison of *C. intestinalis* and *C. savignyi* sequences, with blue areas indicating regions with five sequential hits (within a distance of less than or equal to one gene), indicating strong similarity. Twenty-eight of 75 predicted genes in Scaffold\_20 of *C. intestinalis* found best hit matches in Scaffold\_66 of *C. savignyi*. Scaffold\_2, Scaffold\_22, and Scaffold\_25 of *C. intestinalis* showed similar results, suggesting that Scaffold\_20, Scaffold\_25, Scaffold\_22, and Scaffold\_2 of *C. intestinalis* map to the same chromosome. These data corroborate results from comparative genomics studies that suggest a low rate of chromosome translocation between these two species. GECi46\_d23 (red), which corresponds to Scaffold\_20 and GECi35\_g08 (green), which corresponds to Scaffold\_2, map to different arms of the same chromosome.

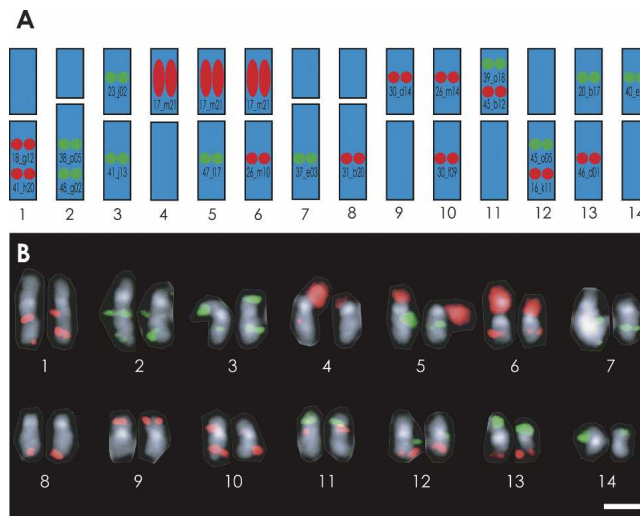
example, Scaffold\_10 and Scaffold\_78 were joined by linking Scaffolds\_10, \_458, \_252, \_500, and \_78 with the aid of BESs (Fig. 1A). By performing FISH with the representative clones, we could confirm that the joined scaffolds mapped to the same chromosome. Moreover, we could determine the orientation of the BES-joined scaffolds on the chromosome based on the relative locations of the constituent scaffolds; for example, we found that Scaffold\_10 was closer to the centromere than Scaffold\_78 (Fig. 1A).

Second, to increase the accuracy of the scaffolds joined by BESs, we selected 23 BAC clones corresponding to these scaffolds (for example, Scaffold\_151) to obtain BAC-FISH data. Third, the other eight BAC clones were selected at random to map onto chromosomal regions that were poorly covered by the previously used 162 BAC clones. For example, Scaffold\_107 had no linkage with the large scaffolds. The construction of the joined scaffolds began with Scaffold\_1, and the construction was checked by carefully selecting and examining many mapped BAC clones, as described below.

As shown in Figure 1A, mapping of BACs onto *Ciona* chromosomes by two-color FISH was effective, but the paucity of cytogenetic markers makes more detailed mapping difficult. To overcome this problem, we compared the syntenic relationships between genomic sequences of *C. intestinalis* and *C. savignyi* in order to further refine our map. This analysis was based on a FASTA algorithm comparison of the 15,852 *C. intestinalis* gene models to *C. savignyi* draft genome sequences (Pearson 2000). The rough syntenic relationships were determined by counting the best hits manually. For example, as shown in Figure 1B, 74 of 129 gene models (57%) in *C. intestinalis* (*Ci*) Scaffold\_2 showed a best hit relationship to those found in the largest *C. savignyi* (*Cs*) scaffold, Scaffold\_66 (~6 Mb in length) (Data version 4/25/2003), while 34 of 68 gene models (50%) in *Ci* Scaffold\_22 had a best-hit relationship to those found in *Cs* Scaffold\_66. Sequential hits were also found, indicating stronger syntenic relationships (Fig. 1B, blue color regions). Similarly, we could also predict that *Ci* Scaffold\_20 and *Ci* Scaffold\_25 mapped to the same chromosome. This method can be applied when comparative genomics show a low rate of chromosome translocation (Stein et al. 2003; Richards et al. 2005). We hypothesize that the majority of *Ciona* genes have remained on the same chromosome arm during the evolution of the two *Ciona* species. Thus, Scaffold\_20 and Scaffold\_2 were mapped to the same chromosome by FISH, even though the red and green signals were not close (Fig. 1B).

### Molecular cytogenetic characterization and karyotype of *C. intestinalis* chromosomes

It was impossible to identify the 14 pairs of *C. intestinalis* chromosome based on morphology alone, although we were previously able to define two large chromosomes (Shoguchi et al. 2005). As illustrated in Figure 2A, in order to identify all of the 14 pairs of chromosomes simultaneously, we prepared a set of 21 BAC-derived probes for two-color FISH. Based on independent FISH data using two different clones, we could predict the localization of these BACs. For example, GECi17\_m21 is a BAC probe that should broadly label rDNA clusters with red signal (also see Supplemental Fig. S1). GECi18\_g12 and GECi41\_h20, both labeled red, are expected to hybridize with the long arm of chromosome 1, while GECi38\_p05 and GECi48\_g02, both labeled green, are expected to hybridize with the long arm of chromosome 2. GECi23\_j02 (green) is expected to hybridize with the



**Figure 2.** Molecular cytogenetic characterization of all 14 pairs of *C. intestinalis* chromosomes. (A) Strategy for identifying all 14 pairs of *C. intestinalis* chromosomes simultaneously. BAC probes used are shown on chromosomes they are predicted to recognize; chromosome 1: GECi18\_g12 (red) and GECi41\_h20 (red), both on the long arm (the GECi designation was omitted in the figure); chromosome 2: 38\_p05 (green) and 48\_g02 (green), both on the long arm; chromosome 3: 23\_j02 (green) on the short arm and 41\_j13 (green) on the long arm; chromosome 4: 17\_m21 (rDNA probe; red) on the short arm; chromosome 5: 17\_m21 (rDNA probe; red) on the short arm and 47\_j17 (green) on the long arm; chromosome 6: 17\_m21 (rDNA probe; red) on the short arm and 26\_m10 (red) on the long arm; chromosome 7: 37\_e03 (green) on the long arm; chromosome 8: 31\_b20 (red) on the long arm; chromosome 9: 30\_d14 (red) on the short arm; chromosome 10: 26\_m14 (red) on the short arm and 30\_f09 (red) on the long arm; chromosome 11: 39\_o18 (green) and 45\_b12 (red), both on the short arm; chromosome 12: 45\_o05 (green) and 16\_k11 (red), both on the long arm; chromosome 13: 20\_b17 (green) on the short arm and 46\_d01 (red) on the long arm; and chromosome 14: 40\_e22 (green) on the short arm. (B) Karyotyping of all 14 pairs of *C. intestinalis* chromosomes by FISH. Metaphase chromosomes were counterstained with DAPI and imaged monochromatically. The centromere regions were brightly stained. Scale bar, 2  $\mu$ m.

short arm of chromosome 3, while GECi41\_j13 (green) should hybridize with the long arm, and so on. Together, these 21 BACs should permit one to distinguish between all 14 chromosome pairs simultaneously by two-color FISH.

As shown in Figure 2B, 14 pairs of *C. intestinalis* chromosomes with distinctive staining patterns could be aligned according to size. Chromosomes 1, 3, 4, 5, 6, 9, 10, 11, 12, 13, and 14 were metacentric, while chromosomes 2, 7, and 8 were submetacentric. rDNA clusters were detected on the short arms of chromosomes 4, 5, and 6. As pointed out in a previous study (Shoguchi et al. 2005), the short arms of chromosome 2 and 4–6, which contain rDNA clusters, showed size polymorphism. Thus, we were able to fully characterize and karyotype all 14 pairs of chromosomes.

The size of the haploid genome of *C. intestinalis* is ~160 Mb. When chromosomes were giemsa stained, they appeared larger than when counterstained with DAPI, which often did not appear to label telomeric regions (data not shown). As a result, portions of the merged signal from broadly labeling BACs, such as GECi38\_p05 of chromosome 2, may appear on neighboring chromosomes. Alternatively, these areas of overlap may represent less condensed chromosomal regions. Nevertheless, measurements of the length of giemsa-stained metaphase chro-

somes and correlation with the total genome size suggested that the *Ciona* chromosomes range in size between about 8 and 16 Mb, as shown in Table 1. The largest chromosome, 1, was estimated to be 16.5 Mb, which is approximately half the size of the smallest human chromosome, 21 (Ichikawa et al. 1993). Chromosome 2 was estimated to be 15.3 Mb, while chromosomes 3–12 ranged in size between about 10 and 13 Mb. The smallest chromosomes, 13 and 14, were very similar in size and were estimated to be about 8 Mb. Each chromosome arm was estimated to be between 3 and 11 Mb in size, which is about the same as the major band length of human metaphase chromosomes, as defined by classical cytogenetics (Paris Conference 1971). These data provide basic information needed to map each BAC probe to the identified chromosomes, as described below.

### Locations of 170 mapped BAC clones

As noted in our previous two-color FISH study (Shoguchi et al. 2004), DAPI staining marks the centromere, which can be used as a landmark for orienting the two-color FISH data (see also Supplemental Fig. S1). As mentioned above, we carried out two-color FISH of a total of 170 BAC probes, and obtained 172 data sets that showed signals on the same chromosome of 14 linkage groups (Supplemental Table S2). The scaffolds constructed using paired BESs were used to select two cohybridizing BAC clones, and BAC-FISH was used to confirm these assemblies. Thus, 17 regions were joined by using a pair of BESs (Fig. 3). The relative order of clones that mapped very close to one another, such as GECi23\_m14 and

GECi31\_j07 on chromosome 1, was also determined by the mapped sequence data for joined scaffolds. FISH with two BAC clones (e.g., GECi23\_m14 and GECi40\_i15) was thus able to determine the orientation of a joined scaffold (Fig. 3).

Results of the two-color FISH analysis are summarized in Figure 3. We found that BAC clones GECi38\_g11 and GECi42\_a15 on Scaffold\_1 mapped close to one another on the long arm of chromosome 8, near the centromere (8q). In addition, clones GECi47\_c08 and GECi39\_a23 on Scaffold\_3 also mapped to chromosome 8, but were more distant from the centromere. Therefore, Scaffolds\_1 and \_3 were mapped to the long arm of chromosome 8. As mentioned above, we also manually constructed joined scaffolds using paired BAC end sequences. The largest joined scaffold was about 6.4 Mb, and hybridized to 23 BAC clones mapped to the long arm of chromosome 8.

In a similar manner, a total of 166 other BAC clones were mapped onto the 14 pairs of *C. intestinalis* chromosomes. The short arm of chromosome 1 was marked by five BAC clones and the long arm by 10 clones (Table 1). Similarly, each of the other chromosomes hybridized to multiple BAC probes, as summarized in Table 1. The FISH data corresponded precisely to the joined scaffolds generated by the paired BES data. The only exception was GECi31\_c16, which mapped to chromosome 8 by FISH, but whose end sequences corresponded to both Scaffold\_1 and Scaffold\_9. While Scaffold\_1 was mapped to chromosome 8, Scaffold\_9 was mapped to chromosome 10 using two other BAC clones (see Supplemental Table S1). The small partial sequence of Scaffold\_9 is likely to map to chromosome 8, because no second-

**Table 1.** Chromosomal mapping of BAC clones in *Ciona intestinalis*

Chromosome	Chromosome arm length (Mb) estimated by cytogenetic analysis	Number of BAC clones mapped by FISH	Total size (Mb) of joined and mapped scaffolds	% coverage	Number of BAC clones** corresponding to mapped scaffolds
1p	6.15	5	4.427703	71.9	141
1q	10.34	10	5.059860	48.9	179
2p	4.03	0	0	0	0
2q	11.31	14	7.652363	67.6	333
3p	5.34	6	1.807897	33.8	63
3q	7.69	11	4.971595	64.6	194
4p	4.56	*	*	*	*
4q	8.47	10	5.372748	63.4	220
5p	4.25	*	*	*	*
5q	7.95	11	5.268640	66.3	179
6p	4.85	*	*	*	*
6q	6.2	7	2.267187	36.6	71
7p	3.21	0	0	0	0
7q	7.84	11	6.392846	81.5	217
8p	2.78	0	0	0	0
8q	7.94	23	6.421300	80.8	269
9p	4.85	4	2.887692	59.5	110
9q	5.87	8	3.683591	62.7	155
10p	4.27	4	1.809801	42.3	70
10q	6.45	8	3.222832	49.9	125
11p	4.27	7	2.430748	56.9	75
11q	5.63	5	1.579050	28.0	47
12p	4.23	3	1.465373	34.6	42
12q	5.67	7	3.741953	65.9	146
13p	3.67	1	0.192510	5.2	4
13q	4.25	3	1.436447	33.7	45
14p	3.62	4	1.851839	51.1	61
14q	4.3	8	2.191802	50.9	70
Total	159.99	170	76.135777	47.6	2816

\*18S/28S rDNA repeat-containing regions, as also indicated in Figure 2.

\*\*BAC clones are counted only when both paired-BAC end sequences corresponding to the scaffolds map to the same chromosome arm (BLASTN hit with >90% identity, alignment length >100, probability <e-80) and 45.2% of the BAC clones are annotated.



ary signal was observed on chromosome 10. One BAC clone, GECi17\_p11, only produced a secondary signal (Supplemental Fig. S1), because nonspecific signals caused by the hybridization of repetitive sequences, which were often present in large DNA fragments, were suppressed with the genomic DNA (Shoguchi et al. 2004).

Genes for ribosomal RNA seem to be clustered within the *C. intestinalis* genome, as appears to be the case for other animals (Shoguchi et al. 2005). A probe made from a BAC clone containing rDNA gene clusters stained a broad region of the short arm of chromosomes 4, 5, and 6, suggesting that these regions are likely to be occupied by clusters of ribosomal genes (Fig. 2B; Supplemental Fig. S1). Chromosomes 2, 7, and 8 are submetacentric, and therefore also have short arms, but genomic sequence information has not yet been mapped to these arms.

We estimate that nearly 65% of the nonrepetitive genome sequence information has been mapped to chromosomes by FISH, although some highly polymorphic regions of the genome made accurate assembly of joined scaffolds difficult. In addition, cytogenetic analysis was performed for an estimated 47.6% of the known 160-Mb sequence, which includes repetitive sequences and corresponds to 45.2% of the BAC clones (2816/6224 clones).

Although we were able to map about 65% of *C. intestinalis* genomic information onto chromosomes, further mapping efforts will be required in the future. Future studies to fill in gaps between scaffolds as well as within a scaffold will also be helpful for further mapping of the genome information onto the chromosomes.

Due to the small size and high degree of morphological polymorphism in chromosomes of invertebrate animals, it is sometimes difficult to perform precise karyotyping for these organisms using conventional methods. As shown in this study, two-color FISH is very effective for analyzing the genomes of organisms without extensive prior genetic characterization. Moreover, we show that comparison between genome sequences of closely related species is a very useful tool for mapping. In this era of comparative genomics, in which whole-genome shotgun technology has made it possible to sequence the genome of a variety of different organisms, the approach we have developed will be very useful. Indeed, there are currently several ongoing genome sequencing projects that have targeted such organisms as sea urchins and amphioxus, which will likely face similar challenges as have been encountered with ascidian genome analysis. Our data suggest that analysis by two-color FISH will make it possible to perform chromosomal mapping of their draft sequences.

## Methods

### Biological materials

*C. intestinalis* adults were cultured at the Maizuru Fisheries Research Station of Kyoto University and the International Coastal Research Center, Ocean Research Institute of the University of Tokyo. In this study, we used embryos at the neurula and early tailbud stages. Handling of gametes and embryos was carried out as described by Shoguchi et al. (2004).

### Fluorescent in situ hybridization with BAC clones

A library of BAC clones with an average length of 135 kb was constructed from *C. intestinalis* sperm DNA (Kobayashi et al. 2002). Chromosome preparation was performed as described in

Shoguchi et al. (2005). FISH was carried out as described in Shoguchi et al. (2004) and modified as follows: To distinguish between the 14 pairs of chromosomes simultaneously using FISH, 21 BAC clones were selected from among those tested by FISH analyses, in which two BAC clones were hybridized at the same time. The 21 BAC-derived probes (as shown in Fig. 2A) were hybridized simultaneously. The hybridization solution consisted of 50% formamide, 2× SSC, 10% dextran sulfate, 10 μg sheared *C. intestinalis* sperm DNA, 0.15% SDS, and a total of 20 μL of this solution was used per slide. At first, an aliquot containing about one-eighth of each labeled probe (derived from 1 μg of BAC DNA) was added to the hybridization mix to make the karyotyping mixture. Hybridization was performed for 55 h at 42°C. Signal from biotin-labeled probes was amplified and detected with sequential applications of avidin FITC DCS (Vector Laboratories), biotinylated anti-avidin D (Vector Laboratories), and then avidin FITC DCS again. For detection of DIG-labeled probes, anti-DIG-rhodamine Fab fragments (ROCHE) was applied, followed by Texas Red anti-sheep secondary antibody (Vector Laboratories). After the first experiment, the concentration of each probe in the karyotyping mixture was adjusted by increasing the concentration of probes that showed weaker signals, or by decreasing the concentration of probes that showed stronger signals in order to obtain signals of similar strength. Image processing was done with Adobe Photoshop 6.0. Computerized background processing and image-feature intensification were conducted using Photoshop 6.0 to make the weak signals recognizable in aligned- and paired-chromosome figures (Fig. 2B). This process caused strong signals to appear enlarged, resulting with some signals appearing outside of the chromosomes. The counterstained blue image was changed to gray scale in Photoshop 6.0 for the sake of image clarity. Following the collection of FISH images and pairing, the preparation was stained in Giemsa solution, as described by Shoguchi et al. (2005). Images were collected with a Zeiss epifluorescence microscope equipped with an Axiocam camera. Measurements were done with Adobe Photoshop 6.0. Five preparations were analyzed and the average chromosome arm lengths (Mb) were estimated.

### Construction of joined-scaffolds by using BAC end sequences

Of a total of 12,448 BAC end sequences (6224 clones), 11,420 corresponded to scaffolds (Assembly v1.0), as shown by using the BLASTN algorithm (probability <e-30). Manual assembly was performed on those gaps covered by more than two pairs of BAC end sequences. By comparison with FISH data, we also joined some scaffolds using one pair of BAC end sequences. The information is available at <http://hoya.zool.kyoto-u.ac.jp/cgi-bin/gbrowse/ci>. Each set of joined scaffolds was constructed independently by two people and was verified by comparison of the two data sets.

## Acknowledgments

We thank the members of the Joint Genome Institute for helpful advice on bioinformatics. We also thank Drs. Yoichi Matsuda and Chizuko Umehara for useful discussions concerning karyotype analysis and FISH methods, Dr. Shungo Kano for incisive comments, and Chikako Imaizumi for her support in the maintenance of sequence information in our laboratory. We thank the *Ciona savignyi* genome consortium for the draft genome information on their Web site. This manuscript benefited from the helpful comments of three reviewers. Kazuko Hirayama, Maizuru Fisheries Research Station of Kyoto University, International Coastal Research Center of the University of Tokyo, and Sugashima Marine Biological Laboratory of Nagoya University are

acknowledged for their help in culturing of *Ciona intestinalis*. The present study was supported by Grants-in-Aid from MEXT, Japan to N.S. (12202001, 17018018). Work at JGI was performed under the auspices of the US Department of Energy's Office of Science, Biological and Environmental Research Program, and by the University of California, Lawrence Livermore National Laboratory under Contract No. W-7405-Eng-48, Lawrence Berkeley National Laboratory under Contract No. DE-AC02-05CH11231 and Los Alamos National Laboratory under Contract No. W-7405-ENG-36. The Center for Integrative Genomics is supported by a grant from the Gordon and Betty Moore Foundation.

## References

- Cameron, C.B., Garey, J.R., and Swalla, B.J. 2000. Evolution of the chordate body plan: New insights from phylogenetic analyses of deuterostome phyla. *Proc. Natl. Acad. Sci.* **97**: 4469–4474.
- Colombero, D. and Lazzaretto-Colombero, I. 1978. Chromosome evolution in some marine invertebrates. In *Marine organisms* (eds. B. Battaglia et al.), pp. 487–525. Plenum, New York.
- Dehal, P., Satou, Y., Campbell, R.K., Chapman, J., Degnan, B., DeTomaso, A., Davidson, B., DiGregorio, A., Gelpke, M., Goodstein, D.M., et al. 2002. The draft genome of *Ciona intestinalis*: Insights into chordate and vertebrate origins. *Science* **298**: 2157–2167.
- Ichikawa, H., Hosoda, F., Arai, Y., Shimizu, K., Ohira, M., and Ohki, M. 1993. A NotI restriction map of the entire long arm of human chromosome 21. *Nat. Genet.* **4**: 361–366.
- Jeffery, W.R. 2001. Determinants of cell and positional fate in ascidian embryos. *Int. Rev. Cytol.* **203**: 3–62.
- Johnson, D.S., Davidson, B., Brown, C.D., Smith, W.C., and Sidow, A. 2004. Noncoding regulatory sequences of *Ciona* exhibit strong correspondence between evolutionary constraint and functional importance. *Genome Res.* **14**: 2448–2456.
- Kobayashi, M., Matsuda, M., Asakawa, S., Shimizu, N., Nagahama, Y., Satou, Y., and Satoh, N. 2002. Construction of BAC libraries derived from the ascidian *Ciona intestinalis*. *Genes Genet. Syst.* **77**: 283–285.
- Kusakabe, T., Yoshida, R., Ikeda, Y., and Tsuda, M. 2004. Computational discovery of DNA motifs associated with cell type-specific gene expression in *Ciona*. *Dev. Biol.* **276**: 563–580.
- Nishida, H. 2002. Specification of developmental fates in ascidian embryos: Molecular approach to maternal determinants and signaling molecules. *Int. Rev. Cytol.* **217**: 227–276.
- Paris Conference. 1971. Standardization in human cytogenetics. *Cytogenetics* **11**: 313–362.
- Pearson, W.R. 2000. Flexible sequence similarity searching with the FASTA3 program package. *Methods Mol. Biol.* **132**: 185–219.
- Richards, S., Liu, Y., Bettencourt, B.R., Hradscky, P., Letovsky, S., Nielsen, R., Thornton, K., Hubisz, M.J., Chen, R., Meisel, R.P., et al. 2005. Comparative genome sequencing of *Drosophila pseudoobscura*: Chromosomal, gene, and cis-element evolution. *Genome Res.* **15**: 1–18.
- Satoh, N. 1994. *Developmental biology of ascidians*. Cambridge University Press, New York.
- . 2003. The ascidian tadpole larva: Comparative molecular development and genomics. *Nat. Rev. Genet.* **4**: 285–295.
- Satou, Y., Yamada, L., Mochizuki, Y., Takatori, N., Kawashima, S., Sasaki, A., Hamaguchi, M., Awazu, S., Yagi, K., Sasakua, Y., et al. 2002. A cDNA resource from the basal chordate *Ciona intestinalis*. *Genesis* **33**: 153–154.
- Stein, L.D., Bao, Z., Blasiar, D., Blumenthal, T., Brent, M.R., Chen, N., Chinwalla, A., Clarke, L., Coghlan, A., et al. 2003. The genome sequence of *Caenorhabditis briggsae*: A platform for comparative genomics. *PLoS Biol.* **1**: e45.
- Shoguchi, E., Ikuta, T., Yoshizaki, F., Satou, Y., Satoh, N., Asano, K., Saiga, H., and Nishikata, T. 2004. Fluorescent in situ hybridization to ascidian chromosomes. *Zool. Sci.* **21**: 153–157.
- Shoguchi, E., Kawashima, T., Nishida-Umehara, C., Matsuda, Y., and Satoh, N. 2005. Molecular cytogenetic characterization of *Ciona intestinalis* chromosomes. *Zool. Sci.* **22**: 517–524.
- Vinson, J.P., Jaffe, D.B., O'Neill, K., Karlsson, E.K., Stange-Thomann, N., Anderson, S., Mesirov, J.P., Satoh, N., Satou, Y., Nusbaum, C., et al. 2005. Assembly of polymorphic genomes: Algorithms and application to *Ciona savignyi*. *Genome Res.* **15**: 1127–1135.

Received May 22, 2005; accepted in revised form October 23, 2005.