



Molecular and phylogenetic analyses reveal mammalian-like clockwork in the honey bee (*Apis mellifera*) and shed new light on the molecular evolution of the circadian clock

Elad B. Rubin, Yair Shemesh, Mira Cohen, et al.

Genome Res. 2006 16: 1352-1365 originally published online October 25, 2006
Access the most recent version at doi:[10.1101/gr.5094806](https://doi.org/10.1101/gr.5094806)

References This article cites 104 articles, 19 of which can be accessed free at:
<http://genome.cshlp.org/content/16/11/1352.full.html#ref-list-1>

Open Access Freely available online through the *Genome Research* Open Access option.

License Freely available online through the Genome Research Open Access option.

Email Alerting Service Receive free email alerts when new articles cite this article - sign up in the box at the top right corner of the article or [click here](#).



To subscribe to *Genome Research* go to:
<https://genome.cshlp.org/subscriptions>

Copyright © 2006, Cold Spring Harbor Laboratory Press

Molecular and phylogenetic analyses reveal mammalian-like clockwork in the honey bee (*Apis mellifera*) and shed new light on the molecular evolution of the circadian clock

Elad B. Rubin,¹ Yair Shemesh,¹ Mira Cohen,¹ Sharona Elgavish,² Hugh M. Robertson,³ and Guy Bloch^{1,4}

¹Department of Evolution, Systematics, and Ecology, The Alexander Silberman Institute of Life Sciences, The Hebrew University of Jerusalem, Jerusalem 91904, Israel; ²The Bioinformatics Unit, The Hebrew University-Hadassah Medical School, Jerusalem 91120, Israel; ³Department of Entomology, University of Illinois at Urbana-Champaign, Urbana, Illinois 61801, USA

The circadian clock of the honey bee is implicated in ecologically relevant complex behaviors. These include time sensing, time-compensated sun-compass navigation, and social behaviors such as coordination of activity, dance language communication, and division of labor. The molecular underpinnings of the bee circadian clock are largely unknown. We show that clock gene structure and expression pattern in the honey bee are more similar to the mouse than to *Drosophila*. The honey bee genome does not encode an ortholog of *Drosophila* *Timeless* (*Tim*), has only the mammalian type *Cryptochrome* (*Cry-m*), and has a single ortholog for each of the other canonical “clock genes.” In foragers that typically have strong circadian rhythms, brain mRNA levels of *amCry*, but not *amTim* as in *Drosophila*, consistently oscillate with strong amplitude and a phase similar to *amPeriod* (*amPer*) under both light-dark and constant darkness illumination regimes. In contrast to *Drosophila*, the honey bee *amCYC* protein contains a transactivation domain and its brain transcript levels oscillate at virtually an anti-phase to *amPer*, as it does in the mouse. Phylogenetic analyses indicate that the basal insect lineage had both the mammalian and *Drosophila* types of *Cry* and *Tim*. Our results suggest that during evolution, *Drosophila* diverged from the ancestral insect clock and specialized in using a set of clock gene orthologs that was lost by both mammals and bees, which in turn converged and specialized in the other set. These findings illustrate a previously unappreciated diversity of insect clockwork and raise critical questions concerning the evolution and functional significance of species-specific variation in molecular clockwork.

[Supplemental material is available online at www.genome.org.]

Circadian clocks enable organisms to anticipate predictable environmental changes, schedule activities for an advantageous time during the day, and coordinate internal processes among themselves and with the environment. The molecular bases for rhythm generation in organisms as diverse as cyanobacteria, plants, fruit flies, and mammals consist of interlocked autoregulatory transcriptional/translational feedback loops with positive and negative elements (Young and Kay 2001; Bell-Pedersen et al. 2005). The molecular control of circadian rhythms in animals is best known for the fruit fly *Drosophila melanogaster*, and is based largely on the analysis of mutations and molecular manipulations in “clock genes.” The current model for rhythm generation in central pacemaker cells of *Drosophila* involves interactions among six transcription factors—Period (*dPER*), Timeless (*dTIM1*), Clock (*dCLK*), Cycle (*dCYC*), Par Domain Protein 1 (*dPDP1*), and Vriille (*dVRI*); the kinases Double-Time (*dDBT*), Shaggy (*dSGG*), and Casein Kinase 2 (*dCK2*); the Protein Phosphatase 2a (*dPP2a*); and the protein degradation protein Supernumerary Limbs (*dSLMB*) (Hardin 2004, 2005; Bell-Pedersen et al. 2005). The protein products of *dClk* and *dCyc* (*dCLK* and

dCYC, respectively) interact and form a complex that binds E-box elements (CACGTG) in regulatory sequences of the *dPer* and *dTim1* promoter regions to activate their transcription. The mRNA transcripts of these genes accumulate in the cytoplasm of pacemaker cells, where they are translated into proteins. The protein products of *dPer* (*dPER*) and *dTim1* (*dTIM1*) accumulate during the night, eventually entering the nucleus and binding to the *dCLK/dCYC* complex. The binding of *dPER* (and perhaps *dTIM1*) to the *dCLK/dCYC* complex interferes with *dCLK/dCYC* binding to the E-box and results in a cessation of transcriptional activity (Lee et al. 1999). This creates a negative feedback loop with *dPER* and *dTIM1* inhibiting their own transcription. Degradation of *dTIM1* in the late night renders *dPER* unstable and leads to its degradation later in the morning. These events release the inhibition from *dCLK/dCYC* activity and enable a new round of *dPer*, *dTim1*, *dVri*, and *dPdp1* transcription. The negative feedback loop is fine tuned by the action of *dCRY*, the kinases, and the phosphatases (for recent reviews, see Hardin 2004, 2005). *dCRY* allows the period and phase of the clock to adjust to changing photoperiods. On exposure to light, *dCRY* is thought to associate with *dTIM1* to promote its rapid degradation via a proteasome-dependent pathway (Ceriani et al. 1999; Rosato et al. 2001; Busza et al. 2004; Dissel et al. 2004). The *dCLK/dCYC* complex is involved in a second autoregulatory loop in the fly’s pacemaker, controlling the cycling levels of *dCLK*. *dClk* mRNA is produced

⁴Corresponding author.

E-mail bloch@vms.huji.ac.il; fax 972-2-6584270.

Article published online before print. Article and publication date are at <http://www.genome.org/cgi/doi/10.1101/gr.5094806>. Freely available online through the *Genome Research* Open Access option.

with a circadian rhythm but cycles in antiphase to *dPer*, and *dTim1*. The dCLK/dCYC complex binds to E-boxes on the promoters of *dVri* and *dPdp1* and activates their transcription. After translation, dVRI and dPDP1 proteins feed back to negatively or positively (respectively) regulate *dClk* expression (Cyran et al. 2003; Glossop et al. 2003).

Comparison of the mechanism for rhythm generation in vertebrates and flies shows that there is a high degree of conservation not only in the general design and function of the clockwork but also in that similar principal clock genes are involved in these two models for a circadian molecular circuit. Despite this conservation, some of these genes appear to take on a different function in the clocks of *Drosophila* and mouse (see Dunlap 1999; Edery 2000; Rosato and Kyriacou 2001; Young and Kay 2001; Panda et al. 2002; Stanewsky 2003; Bell-Pedersen et al. 2005). Mammals have two paralogs for CRY and three for PER. In contrast to *Drosophila*, mCRYs are indispensable components of the mouse central pacemaker (van der Horst et al. 1999; Vitaterna et al. 1999). mCRYs interact with mPERs and are essential for their translocation to the nucleus and the inhibition of mCLK/mBMAL transcriptional activity (BMAL is the mammalian ortholog of *Drosophila's* CYC). An additional key difference from *Drosophila* is that the activity of vertebrate CRY does not appear to depend on light (Griffin Jr. et al. 1999; Kume et al. 1999; Froy et al. 2002). Thus, mammalian CRY functions in the negative limb of the clock, with a similar function to that of dTIM1 in *Drosophila* pacemaker cells. It is important to note, however, that although mammalian and *Drosophila* CRY proteins certainly differ in both their structure and biochemical activity (Froy et al. 2002; Busza et al. 2004; Green 2004; Partch et al. 2005; Zhu et al. 2005; Chaves et al. 2006), dCRY is implicated in the regulation of clock gene expression and rhythm generation in peripheral clocks (Ivanchenko et al. 2001; Krishnan et al. 2001; Levine et al. 2002; Collins et al. 2006), and mammalian CRYs are thought to be involved in circadian light response (Cashmore 2003; Sancar 2003). Mammals do not have a true ortholog of *Drosophila* TIM1 but rather have an ortholog of *Drosophila* Timeout (dTIM2), a gene with no known function in the fly's clock. Mammalian TIM is expressed in the suprachiasmatic nucleus (SCN), the site of the mammalian pacemaker, but there is an ongoing debate concerning its role, if any, in central rhythm generation (Zylka et al. 1998; Takumi et al. 1999; Field et al. 2000; Gotter et al. 2000; Barnes et al. 2003). mTIM is apparently not involved in photic input to the mammalian clock because its levels are not affected even by a strong resetting light pulse; light resetting instead appears to be mediated by rapid modulation of mPER1 and mPER2 levels (Field et al. 2000). In both mammals and *Drosophila*, CLK and BMAL/CYC function as positive elements in the interlocked feedback loops. In *Drosophila* dCLK contains a transactivation domain, and the amounts of its products oscillate in virtual antiphase to those of *Per*. In contrast in mammals, a transactivation domain is found on BMAL1 that also oscillates in antiphase to *Per*. The amounts of the products of *dCyc* in *Drosophila* and *Clk* in mammals essentially do not vary during the day.

With this evidence for conservation between flies and mice, it is tempting to assume that the clocks of other insects are similar to the fly model. However, several lines of evidence from studies with insects, including the honey bee, are not easily reconciled with the *Drosophila* model (see Sauman and Reppert 1996; Wise et al. 2002; Bloch et al. 2003; Sehadova et al. 2003; Zavodska et al. 2003). These inconsistencies may imply that not all insect clockworks are similar to *Drosophila*. But a detailed de-

scription of the molecular biology of the clock is only available for a few insects other than *Drosophila* (e.g., Sauman and Reppert 1996; Chang et al. 2003; Zhu et al. 2005). Thus, the degree of species-specific variation in the clockwork, as well as its functional significance, is mostly unknown.

The honey bee is an attractive model organism for molecular analysis of circadian rhythms because its clock system is implicated in a set of complex behaviors such as time memory, sun compass navigation, and dance language communication (for review, see von Frisch 1967; Moore-Ede et al. 1983). Another level of complexity emerges from studies showing remarkable plasticity in the circadian rhythms of bees that is at least in part modulated by social factors and therefore may contribute to the temporal organization of their societies. Bees socially synchronize their clocks (Moritz and Kryger 1994), have an endogenous ontogeny of circadian rhythms (Moore 2001), and switch between activity with or without circadian rhythms according to their task (Moore et al. 1998; Bloch and Robinson 2001).

We searched the honey bee genome, cloned, and characterized putative *Apis* homologs of *Per*, *Tim2*, *Cry*, *Cyc*, *Clk*, *Vri*, and *Pdp1*. We describe the brain expression profile during the day for the first five genes. Both our bioinformatic and expression analyses point to significant inconsistencies with the *Drosophila* model and surprising similarities to the mammalian model. We also provide phylogenetic analyses with new data from additional insect genomes that suggest that mammalian and *Drosophila* clocks evolved from ancestors that probably had both *Tim1* and *Tim2* and both the *Drosophila* and mammalian type *Cry*. These results pose profound challenges to our understanding of the evolution of specific clock genes and the circadian clock as a whole.

Results

Identification and cloning of putative clock genes in the honey bee

We identified homologs for most of the known *Drosophila* clock genes in the honey bee genome sequence (Supplemental Table S1), one of which, *amPer*, was already known (Toma et al. 2000), and the genome sequence reveals no additional *Per* homologs. We PCR cloned and obtained the 5' and 3' ends on cDNA samples obtained from brain transcripts of these genes (see Methods). We deduced the amino acid residues from the cloned cDNA and genomic sequences and used these for further analyses of protein structure and phylogenetic relationships. The honey bee genome encodes a single homolog of each of the canonical animal clock genes. There are orthologs for *Clk*, *Cyc*, *Pdp1*, *Vri* and *Per* from *Drosophila* and other insects. In contrast, the honey bee genome does not encode true orthologs of *Drosophila* *Cry* and *Tim1* genes. Rather, there are only orthologs of *Drosophila* *Timeout* (*Tim2*) and mammalian-type *Cry* (*Cry-m*, see below).

Phylogenetic relationships

Clock and Cycle/Bmal

Figure 1 shows the phylogenetic relationships between the clock proteins CLK and CYC/BMAL, and the related protein lineage Tango/Arnt. Note that the species relationships in the phylogenetic tree do not always exactly fit the known taxonomic relationships between the species, as expected for trees using single relatively short proteins. Nevertheless, the agreement with common taxonomy is typically good. For example, the sea urchin (*Strongylocentrotus purpuratus*) proteins usually cluster near the

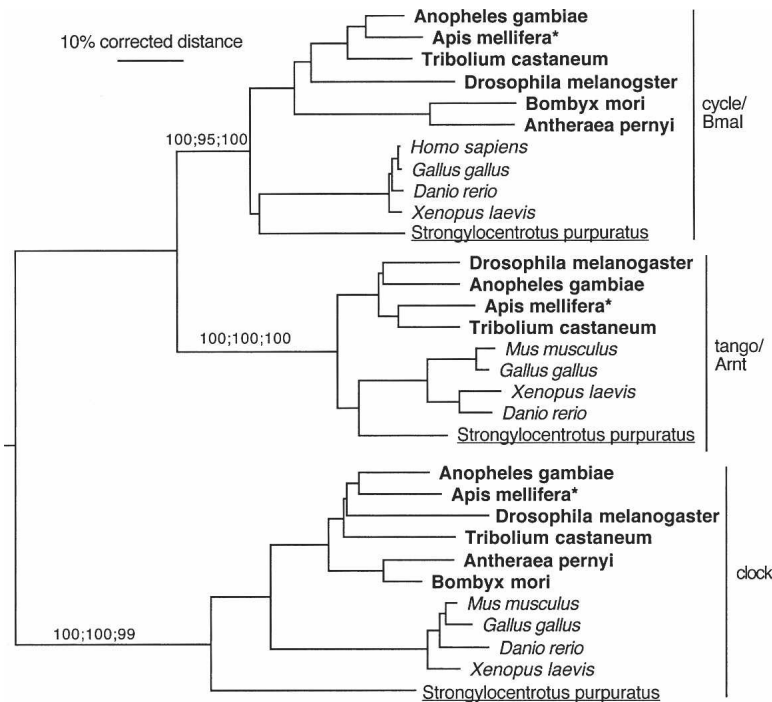


Figure 1. Phylogenetic relationships of the Cycle/Bmal, Tango/Arnt, and Clock protein family. We used the Clock protein as an outgroup to root the tree based on its divergence from the Cycle/Bmal and Tango/Arnt sister proteins. Support levels are shown only for the main protein lineages, which are separated slightly vertically for visual clarity (percentage of trees showing a branch in distance and parsimony bootstrapping, followed by percentage of maximum likelihood quartet puzzling steps). Distinct font styles are used to highlight major taxonomic lineages. Bold for insects, italics for vertebrates, underline for the sea urchin, and plain for all the others. The honey bee *Apis mellifera* is highlighted with an asterisk.

base of the vertebrates. There is good support for the orthology of each of these three proteins (Tango/Arnt, Clock, and Cycle/Bmal) in vertebrates and insects. Importantly, the honey bee proteins cluster unambiguously with orthologous proteins from other insects.

Vrille and Pdp1

The honey bee orthologs amVRI and amPDP1 clearly cluster with those of other insects and are distinct from related proteins of vertebrates (Supplemental Fig. 1).

Timeless/Timeout

Phylogenetic analysis for the Timeless-Timeout family (Fig. 2) suggests that these two paralogous protein lineages evolved from gene duplication in early animals; a single convincing ortholog is available from plants, fungi, and the social amoeba *Dictyostelium* (Eichinger et al. 2005). The canonical Timeless/TIM1 protein of *D. melanogaster* that is missing from the honey bee is present in all other available insect genomes. Because *Daphnia*, the only sequenced crustacean genome (H.M. Robertson, unpubl.), the basal flour beetle *Tribolium castaneum*, and the basal dipteran mosquito *Anopheles gambiae* have *TIM1*, it must have been lost from the honey bee. The antiquity of *TIM1* is demonstrated by the presence of an ortholog in the sea urchin, *S. purpuratus* (underlined in Fig. 2). This relatively rapidly evolving *TIM1* lineage was apparently also lost from most deuterostomes, including chordates, and from the *Caenorhabditis* nematodes. In contrast, the Timeout (TIM2) protein, often confusingly called "Time-

less" in the vertebrate literature (this issue of orthology or paralogy of insect and vertebrate Timeless/Timeout proteins is also discussed in Benna et al. 2000; Gotter et al. 2000), is present throughout the available deuterostomes, including in the unpublished sea urchin genome and in all available insect genomes. Thus, by losing *TIM1* the honey bee has "converged" with vertebrates that have only the Timeout/TIM2 ortholog.

Cryptochromes

Our analysis (Fig. 3) suggests that there are at least three, and most likely four, closely related lineages of Photolyases/Cryptochromes in animals, presumably resulting from a series of gene duplications in early animals given the presence of a photolyase lineage in plants and bacteria. Rooting the analysis with the recently described DASH Photolyase/Cryptochrome protein (Daiyasu et al. 2004) that is present in some bacteria, plants, sea urchin, and basal vertebrates, but not insects or mammals, shows these relationships particularly well (Fig. 3).

Animal CRY proteins are clearly divided into two distinct clusters. One cluster contains the *Drosophila*-type CRY (that we termed "CRY-d"; see Discussion), and the other includes all the vertebrate CRYs (that we termed "CRY-m"; see Discussion).

CRY-d is present in other flies and moths (Sauman et al. 2005; Zhu et al. 2005) but is absent from the honey bee and appears to be missing from *Tribolium* (based on the current stage of its genome sequencing). The presence of this type of CRY in most insects and in the sea urchin genome confirms that this is an ancient animal protein lineage that was lost independently from honey bees and (perhaps) *Tribolium* beetles. The CRY-m protein (mammalian-type), in addition to being duplicated at least once again in vertebrates, is also an old lineage, being present not only in the sea urchin but also in insects such as the bee, *Bombyx*, *Anopheles*, and *Tribolium*, except *D. melanogaster*. Examination of the *D. pseudobscura* genome (Richards et al. 2005) and the 10 newly available *Drosophila* genomes representing the entire genus (see Robertson 2005; <http://flybase.bio.indiana.edu/blast/>) shows that this loss occurred before the origin of the genus, but its presence in the mosquito *A. gambiae* indicates it occurred sometime after the split of the suborders Nematocera and Brachycera ~250 Myr ago (Gaunt and Miles 2002).

The other two lineages of this Photolyase/Cryptochrome set are a Photolyase in basal vertebrates, the sea urchin, and some insects that has been independently lost from mammals (Kato et al. 1994), bee, and *Tribolium* and a lineage represented by the zebrafish *Danio rerio* CRY4 protein (Daiyasu et al. 2004). This lineage is also present in the chicken, but not the sea urchin, insects, or mammals, and presumably was again lost independently in these lineages. It becomes evident from this phylogenetic analysis that this lineage of Photolyase/Cryptochrome proteins is replete with both ancient and recent duplications and

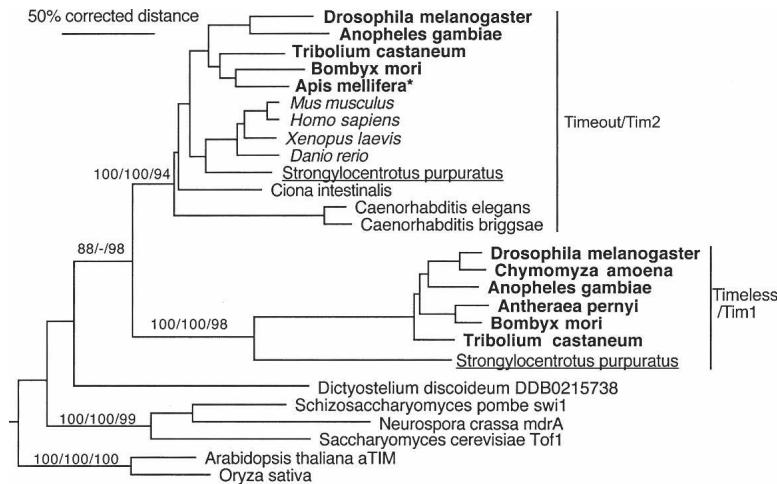


Figure 2. Phylogenetic relationships of the Timeless and Timeout proteins. We used the plant TIMELESS protein as an outgroup to root the tree. For additional details, see legend to Figure 1.

ancient and recent independent gene losses. By losing CRY-d the honey bee has converged with vertebrates that only have the CRY-m proteins.

Putative functional domains and motifs on honey bee clock genes

amClock and *amCycle*

CLK and CYC/BMAL are PAS-bHLH transcription factors. We termed the honey bee ortholog of CYC/BMAL “amCYCLE” based on its definite clustering with dCYC in the phylogenetic analysis (Fig. 1). amCYC protein contains highly conserved PAS-A, PAS-B, Pac, and bHLH; domains; and sequences identical (100%) to the putative N-terminal NLS, and NES signals of other CYC/BMAL proteins (Fig. 4A; Chang et al. 2003; Hirayama and Sassone-Corsi 2005). The amCYC protein is significantly longer than dCYC (675 compared with 413 amino acids) and comparable in size to BMAL proteins of other animals. Importantly, the C-terminal end of amCYC (termed “BCTR” by Chang et al. 2003) is highly conserved (85% identity, 87% similarity) with those of the mouse and *A. pernyi*, in which this domain has potent transcriptional activity in vitro (Takahata et al. 2000; Chang et al. 2003). Thus, amCYC is phylogenetically related to dCYC but shares important structural similarities with BMAL proteins.

CLK proteins are characterized by a highly conserved N-terminal with PAS-A, PAS-B, PAC, bHLH, NLS, and NES domains and a more variable and typically glutamine-rich (Q-rich) C-terminal. All the N-terminal domains are highly conserved in amCLK and are organized in the same order as in CLK proteins of other insects and mammals (Fig. 4B; Chang et al. 2003; Hirayama and Sassone-Corsi 2005). amCLK is significantly shorter than dCLK (724 compared to 1027 amino acids) and does not contain the part on dCLK downstream of the *Jrk* mutation. This part of the protein contains two poly-glutamine (poly-Q) repeats and is thought to be essential for dCLK transcriptional activity (Allada et al. 1998; Darlington et al. 1998). Nevertheless, amCLK contains two poly-Q sequences (following the method of Chang et al. 2003, who defined poly-Q as a sequence in which $\geq 60\%$ amino acid residues are glutamine) on amino acids 477–486 and 644–688. The C-terminal sequence corresponding to exon 19 on mCLK, which is implicated in transcriptional activity of mCLK

but is dispensable in apCLK (King et al. 1997; Takahata et al. 2000; Chang et al. 2003), is also conserved in the honey bee as well as in other insect CLK proteins (Fig. 4B). The C-terminal poly-Q repeats of amCLK are comparable to those of the mouse, in which in vitro experiments with various cell lines suggest that it is not the main transactivation domain but rather plays a regulatory and/or structural role helping BMAL display its transcriptional activity (Takahata et al. 2000). Taken together, the sequence analyses of amCYC and amCLK suggest that the transactivation domain is located on the honey bee’s ortholog of BMAL (amCYC), as in mammals, and not on CLK as in *Drosophila*.

amVrille and *amPAR* Domain Protein 1

VRI and PDP1 are basic zipper transcription factors that are characterized by a basic region leucine zipper and a highly conserved DNA binding domain. The DNA binding domain of dVRI is essential for binding to sequence elements within *dClk* promoter region in vitro and probably mediates dVRI repression of dClk expression in vivo (Glossop et al. 2003). Importantly, the DNA binding domain of amVRI is 100% identical to that of dVRI and 86% identical to that of mE4BP4, the mammalian homolog of VRI (Supplemental Fig. 2A) (Cowell et al. 1992; Glossop et al. 2003). Although amVRI is relatively G/S rich (44 of the last 194 amino acid residues), it does not contain a true G/S-rich domain comparable to that of dVRI (Cyran et al. 2003).

PDP1 and related proteins are characterized by a PAR (Prolin and Acidic amino acid Rich) and TDA (a putative transactivation domain) domains that are conserved in amPDP1 (Supplemental Fig. 2B; Lin et al. 1997). The N-terminal of amPDP1 is Q-rich and contains two poly-Q stretches, but not an alanine-rich region (Cyran et al. 2003). The DNA binding domain of amPDP1 is 94%–100% identical to those of other PDP1 proteins (Supplemental Fig. 2B; Lin et al. 1997). The DNA binding domains of amVRI and amPDP1 are very similar (11/14 identity, 13/14 similarity) (Supplemental Fig. 2C), suggesting that they can bind similar DNA sequences (Cyran et al. 2003). In sum, functional domains on amVRI and amPDP1 are highly conserved with those on orthologs of *Drosophila* and other insects.

amTimeout

amTIM2 does not contain sequences similar to the two PER binding sites of dTIM1; it also does not contain the NLS or the C terminus cytoplasmic leading domain (CLD) that are implicated in dTIM1 subcellular localization (Supplemental Fig. 3; Gekakis et al. 1995; Saez and Young 1996). By use of the threading server 3D-PPSM (Kelley et al. 2000), we found two helical Armadillo (Arm)/HEAT repeats similar to those found on dTIM1 and dTIM2 (Vodovar et al. 2002; Perry 2005). The first is located on the N-terminal between amino acids 7–506 (90% certainty, E-value = 0.095; note that for 3D-PPSM $E < 0.5$ is considered significant), and the second between amino acids 570–954 (70% certainty, E-value = 0.32). Residues 32–499, which correspond well with the first domain, were also recognized as an Arm repeat (score = 0.8; E-value = 9×10^{-4}) by the threading server

GenTHREADER (Jones 1999; McGuffin and Jones 2003). In a 3D-PSSM analysis of the mouse mTIM2, we discovered two ARM repeats on residues 9–471 (90% certainty, $e = 0.07$) and 493–942 (70% of certainty; $e = 0.31$). The threading server GenTHREADER predicts one continuous Armadillo/HEAT on residues 19–849 of this protein (score = 0.81; E-value = 6×10^{-4}). A search with PredictNLS algorithm identified an RKKQKSR sequence on residues 1300–1307 of the amTIM2 and a similar motif PKKVQKR on residues 998–1004 on dTIM2 as putative NLS sequences. We also found a second putative NLS on dTIM2 amino acids 1357–1373 (RKKPAKVDGEPAKRRRL) and three predicted NLSs on mTIM2 (residues 316–323, 526–537, 940–945) (Supplemental Fig. 3). In sum, our analyses suggest that amTIM2 does not function as does dTIM1 in the negative limb of the *Drosophila* brain clock because it does not contain domains and motifs that are thought to be important for dTIM1 biochemical activity.

amCryptochrome

CRY proteins have two main domains, an N-terminal conserved domain, and a carboxy-terminal “tail” that is intrinsically unstructured and varies considerably in length and primary amino acid sequence (Sancar 2003; Green 2004; Partch et al. 2005). Both domains are important for mammalian CRY ability to inhibit CLK/BMAL driven transcription (Chaves et al. 2006). It appears that the N-terminal photolyase conserved domain of dCRY is necessary for its transcriptional repressing activity in *Drosophila* peripheral clocks (Busza et al. 2004; Collins et al. 2006), but specific dCRY domains involved in this function have not yet been defined. Hirayama et al. (2003) generated chimeras between the transcription repressing zCRY1a and the non-repressing zCRY3 proteins of the Zebrafish and identified three regions (RD1, RD2a, and RD2b), and a putative nuclear localization signal (NLS) within the RD-2b region that are necessary for mammalian-type CRY nuclear localization and subsequent repression of CLK/BMAL1 transcription. We found that the overall similarity between amCRY and mammalian-type CRYs includes these three functional domains (51%–77% identity, 69%–93% similarity in primary amino acid sequence) (Fig. 5) that are not conserved in dCRY. Such high amino acid identity suggests that these domains have a similar three-dimensional structure (Xu et al. 2000). The corresponding amCRY sequence is identical in twelve out of the first fourteen amino acids to the putative RD2b NLS motif. This motif is highly conserved among CRY-m proteins of insects and vertebrates but not in CRY-d proteins such as dCRY, agCRY-d, and the non-repressing Zebra fish zCRY3 (Fig. 5, left lower alignment; Hirayama et al. 2003; Chaves et al. 2006). Much of the variation in light dependent CRY function between *Drosophila*, mammals, and plants is attributed to the C-terminal (Green 2004; Partch et al. 2005). The C-tail of amCRY shares no similarity with the C-terminal domain

of dCRY. The initial part of amCRY’s C-tail contains a coiled-coil region thought to be involved in PER and BMAL binding (Chaves et al. 2006). This coiled-coil domain is conserved in CRY-m proteins but not in CRY-d proteins (Fig. 5, right lower alignment). The C-tail of amCRY does not contain a second putative NLS found on the C-tails of mCRY2 and xCRY2b (Zhu et al. 2003; Sakakida et al. 2005; Chaves et al. 2006). These analyses show that amCRY does not contain sequences thought to be necessary for dCRY photoreceptor function. On the other hand, domains implicated in the transcription repressive function of mammalian-type CRY proteins are highly conserved.

Expression of putative clock genes in the honey bee brain

The temporal expression pattern of putative honey bee clock genes was similar in light:dark (LD) and constant darkness (DD) illumination regimes (with the exception of *amTim*, see below). Brain *amPer* mRNA levels vary over time with a peak at night that was 2.4- to 3.2-fold (three independent experiments, each with bees from a different source colony) higher than the daily trough, and an excellent fit with a cosine model with a period of 23–25 h (Fig. 6A). We found similar oscillations in three experiments in which we collected bees in DD, although the peak/trough ratio was somewhat smaller and ANOVA analyses were not statistically significant (1.8–2.5) (Figs. 7A, 8). These findings are consistent with previous analyses of brain *amPer* mRNA levels in foragers (Toma et al. 2000; Bloch et al. 2001, 2004). There were also consistent and robust oscillations in *amCry* mRNA levels under both LD and DD illumination regimes (Figs. 6C, 7C). Peak/trough ratio was 3.6–6.6 (ANOVA, $P < 0.001$ in all six experiments), higher than that of *amPer*. Most of the variation (>85%) in *amCry* transcript abundance over time is explained by a cosine model with

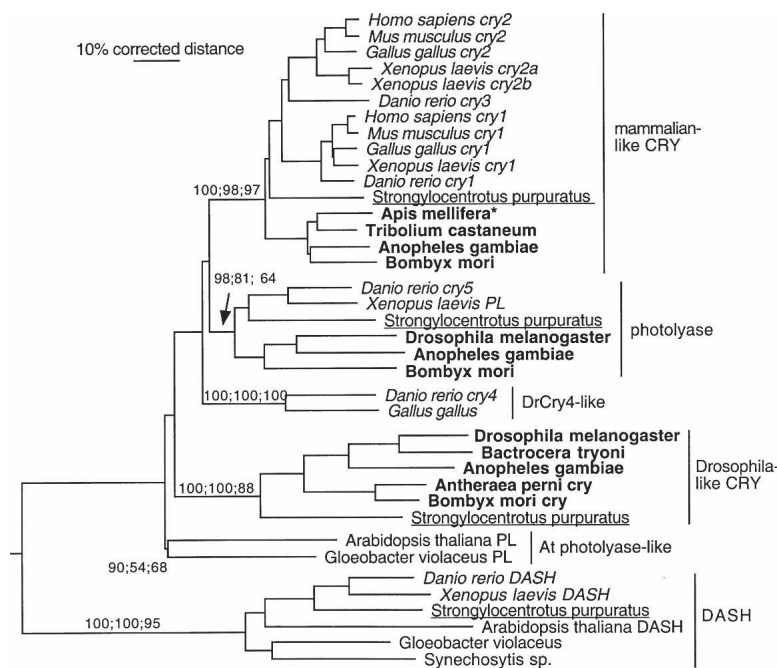


Figure 3. Phylogenetic relationships of animal Cryptochrome and related Photolyase proteins. We used the CRY-DASH protein family as an outgroup to root the tree (based on its position in a larger tree that was rooted with another distantly related photolyase protein lineage that is present in insects and vertebrates) (data not shown). We termed the mammalian-like CRY proteins “CRY-m” and the *Drosophila*-like proteins “CRY-d.” For additional details, see legend to Figure 1.

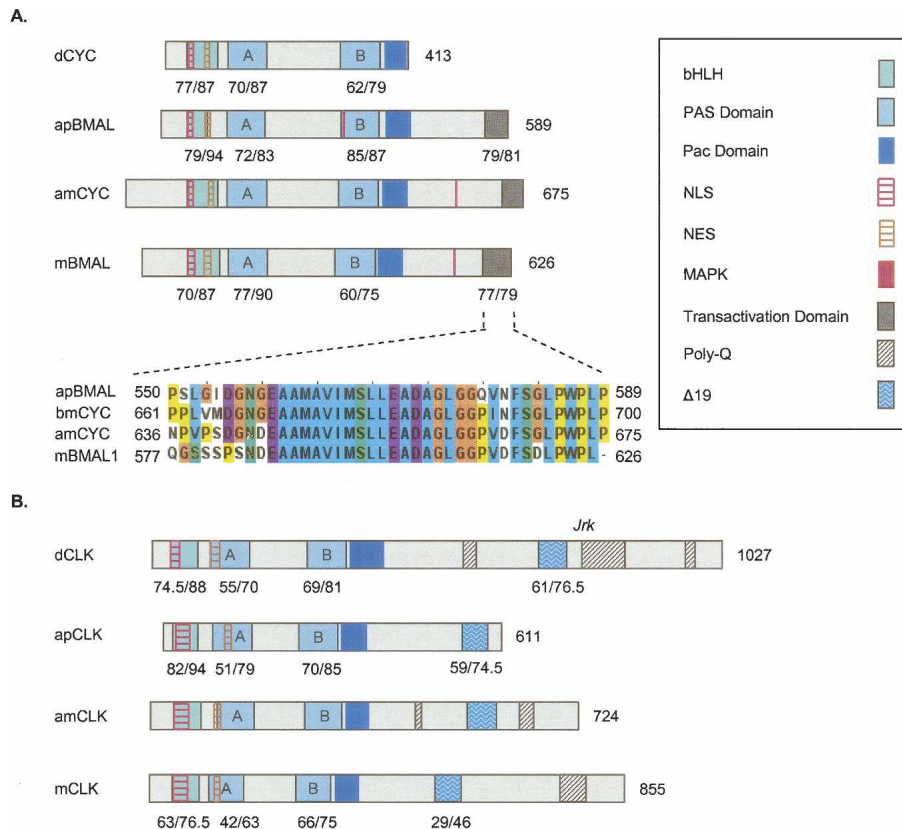


Figure 4. Schematic presentation of putative functional domains and motifs on Cycle/Bmal and Clock proteins from the honey bee *Apis mellifera*, the fruit fly *Drosophila melanogaster*, the giant silk moth *Antheraea pernyi*, and the mouse *Mus musculus*. See legend for domain and motif identity and text for additional details on each domain. Numbers below domains indicate identity/similarity with corresponding sequences on the honey bee ortholog. The numbers at the end of each diagram indicate protein size (number of amino acid residues). (A) Cycle/Bmal proteins. Inset shows a CLUSTALW multiple sequence alignment of a putative domain that is thought to be necessary for apBMAL and mBMAL transcriptional activity (see text for details). bmCYC is the CYC ortholog from the moth *Bombyx mori*. Alignments were generated with CLUSTALW and colored with JalView according to the default CLUSTALX convention. (B) Clock proteins.

a cycle of ~24 h (adjusted $R^2 > 0.85$, besides colony S8 for which $R^2 = 0.58$) and has a similar phase as *amPer* in both LD and DD illumination regimes. *amPER* and *amCRY* transcript levels were low during the day (or subjective day for bees collected in DD), started to increase in the evening, and reached their maxima at night (Figs. 6–8). Brain *amCyc* mRNA levels also appear to cycle, but with relatively small amplitude (peak/trough ratio = 1.4–1.9; Figures 6D, 7D, 8). We nevertheless believe that these weak oscillations represent true circadian influence on *amCyc* expression. Our claim is based on the following observations: (1) the variation over time in *amCyc* mRNA levels was statistically significant in three out of six experiments (ANOVA, $P < 0.01$); (2) there was a 12 h difference between peak and trough levels, and the general pattern of transcript variation over time fits well with a cosinus model (adjusted $R^2 = 0.36$ – 0.96 , with the exception of colony S4); and (3) the pattern of *amCyc* variation over time was consistent in all six experiments (in both LD and DD illumination regimes). The oscillations in *amCyc* mRNA levels were in an almost anti-phase to those of *amPer* and *amCry*; peak levels occur at late night or early morning; levels gradually decreased during the day and reached a trough at late day or early night (Figs. 6–8). In contrast to *amCyc*, brain *amClk* mRNA levels did not vary with

time (ANOVA, $P > 0.25$; peak/trough ratio = 1.16–1.59; in all six experiments). The time of peak and trough were typically not 12 h apart, and the overall variation in transcript abundance over time did not fit a cosinus model (Figs. 6B, 7B, 8; adjusted $R^2 < 0.01$, with the exception of colony S1 for which adjusted $R^2 = 0.69$; thus, Figure 6B that shows data from colony S1 is somewhat nonrepresentative), independent of the illumination regime. The temporal pattern of brain *amTim* expression was the most variable, partly due to differences between DD and LD illumination regimes. In two of three experiments in LD illumination regime (with bees from colonies S1 and S8) (see Fig. 6E), there was a significant variation in *amTim* RNA levels over time (ANOVA, $P < 0.05$; peak/trough ratio = 2.05, 1.86, respectively) and a good fit with a cosinus model (adjusted $R^2 = 0.79$, 0.81, respectively), but not in the third colony (bees from colony S4; ANOVA, $P > 0.3$; peak/trough ratio = 1.6; no significant fit with a cosinus model). In contrast, there was no significant time effect on brain *amTim* RNA levels in three experiments in DD illumination regimes (ANOVA, $P > 0.51$). However, despite the small peak/trough ratio (1.4–1.8, in experiments with colonies S11, S12, and H1), there was a good fit with a cosinus model in the experiments with colonies S11 and S12 (adjusted $R^2 = 0.85$, 0.74, respectively) and a weak fit in the last experiment (colony H1, adjusted $R^2 = 0.28$). The phase of the apparent oscillations in brain *amTim* mRNA levels

was similar to *amCry* and *amPer* in three experiments in which bees were collected in LD (bees from colonies S1, S4, and S8), but was similar to *amCyc* in two other experiments in which bees were collected in DD (bees from colonies S11 and H1). In one experiment in DD, the apparent oscillation in *amTim* mRNA abundance was in a phase intermediate between those of *amPer* and *amCyc* (bees from colony S12). In sum, our expression analyses revealed consistent, robust, and similar oscillations for the transcripts of *amCry* and *amPer*; consistent but weak oscillations in *amCyc*; and no oscillations in *amClk*. The pattern of *amTim* mRNA abundance over time was difficult to interpret because it was less consistent and appeared different in LD and DD illumination regimes.

Discussion

Our findings on the honey bee clock are not consistent with the *Drosophila* brain pacemaker, the current model for insect clocks. We found however, remarkable similarities to the mouse clock, the mammalian model. First, honey bees have only the mammalian-type orthologs of CRY and TIM, two proteins that are

thought to function differently in central pacemakers of mammals and *Drosophila*. Second, the amino acid sequence of amCRY and amTIM lack domains and motifs thought to be essential for dTIM1 and dCRY function in the *Drosophila* clock. This suggests that amTIM2 and amCRY cannot function in exactly the same way as dTIM1 and dCRY in the brain pacemaker of *Drosophila*. amCRY is similar in structure to CRY-m (mammalian-type) proteins of insects and vertebrates and includes domains and motifs implicated in the transcription repressive function of these proteins. Third, the transactivation domain of the CLK/CYC (BMAL) complex appears to be on amCYC, as in mammals, and not on amCLK, as in *Drosophila*. Fourth, the temporal expression patterns of amCry, amTim2, amClk, and amCyc are not consistent with the *Drosophila* model but are similar to the patterns in the mouse. This suggests that products of these genes behave more like the mouse equivalents than *Drosophila*. Our phylogenetic analyses shed new light on the evolution of animal clocks and suggest that the higher similarity of honey bees to mammals than to *Drosophila* is due to both divergence of *Drosophila* from the typical insect clock and molecular convergence in the clocks of bees and mammals.

By using phylogenetic analyses with data from newly available genomes of insects and basal animal taxa, we address the question of orthology or paralogy of the mammalian- and *Drosophila*-type CRY and TIM proteins. Regarding the Timeless/Timeout protein family, we confirm and extend earlier suggestions that Timeless and Timeout are paralogous and not or-

thologous proteins (Benna et al. 2000; Gotter et al. 2000, Chang et al. 2003). Our finding of a TIM1 orthologous in the sea urchin confirms the antiquity of this lineage. Our analysis of Cryptochromes (Fig. 3) indicates that animals have two types of CRY proteins, a mammalian-type and a *Drosophila*-type. Importantly, we show that many insects have a mammalian-type CRY, consistent with the recent report by Zhu et al. (2005). Our analysis clearly shows that the mammalian-type and *Drosophila*-type CRYs are paralogous proteins with an ancient origin. The mammalian-type CRY is found in the basal insect *T. castaneum* genome sequence and in the basal deuterostome sea urchin sequence. This evidence for the ancient origin of mammalian-type CRY may imply that circadian photoreception was not necessarily primeval relative to core clock function in animal clocks as is commonly assumed (see Cashmore et al. 1999; Ivanchenko et al. 2001; Cashmore 2003; Gehring and Rosbash 2003; Sancar 2003; Busza et al. 2004, Tauber et al. 2004). It is also possible that a dual circadian function—photoreception and core clock activity—is the ancient role of CRY in animal clocks (Cashmore 2003; Sancar 2003).

The finding that insects have both the *Drosophila*-type and the mammalian-type cryptochromes calls for new terminology that will clearly distinguish between these two paralog proteins. Zhu et al. (2005) termed the *Drosophila*-type cryptochromes of insects “CRY1” and the mammalian-type proteins “CRY2.” But this terminology is similar to the numerical labeling of the vertebrate paralogs that are all in the mammalian-like CRY branch (Fig. 3). We therefore propose to term the *Drosophila*-type cryptochromes of insects “CRY-d” and the mammalian-type cryptochromes of insects “CRY-m.”

The evidence that the honey bee has only orthologs to CRY-m and Tim2 raises the issue of whether the products of amCry and amTim2 also behave similarly to those of mammals. In *Drosophila*, dCRY has both photoreceptor and core clock functions that appear to vary between tissues (Ivanchenko et al. 2001; Krishnan et al. 2001; Levine et al. 2002; Collins et al. 2006). In the brain's central pacemaker, dCRY is the primary circadian photoreceptor and is not necessary for rhythm generation. Its light-dependent function requires both the conserved photolyase homology domain (N-terminal) and the highly variable C-terminal (C-tail) (Rosato et al. 2001; Froy et al. 2002; Busza et al. 2004; Dissel et al. 2004). The current model states that light activated changes in the C-tail conformation expose the core domain and allow it to interact with TIM (and perhaps PER) (Busza et al. 2004). Our sequence analysis indicates that the C-tail is the most divergent domain between amCRY and dCRY. This finding, together with the overall low similarity between amCRY and dCRY, provides no support for the hypothesis that the two proteins function in the same way. In

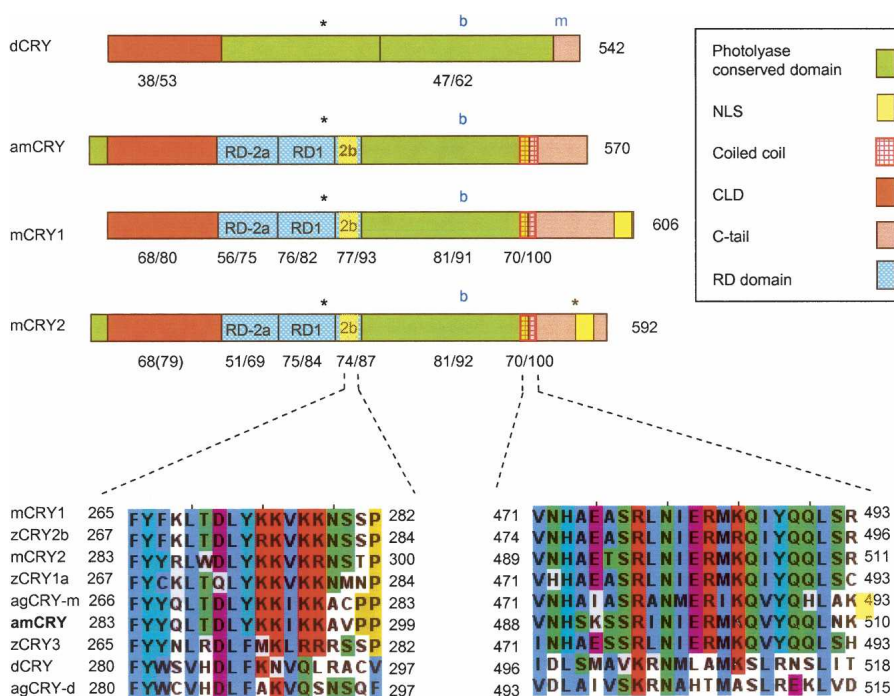


Figure 5. Schematic presentation of putative functional domains and motifs in Cryptochrome proteins from mouse (mCRY1 and mCRY2), honey bee (amCRY), and fruit fly (dCRY). See legend for domain/motif identity and text for additional details on each domain. Phosphorylation sites for MAPK (Sanada et al. 2004) are marked with asterisks. The blue “b” and “m” mark the location of cry^b (D401N mutation) and cry^m (truncation of the last 19 residues in *Drosophila*) mutations in dCRY. Low panels show multiple sequence alignments of a putative nuclear localization signal (NLS) in the RD2b domain (left) and the coiled-coil region (right). Aligned are mammalian-type (mouse, mCRY1 and mCRY2; Zebrafish, zCRY1–3; mosquito, agCRY-m; honey bee, amCRY) and *Drosophila*-type (*Drosophila*, dCRY; mosquito, agCRY-d) CRY proteins. zCRY3 is a mammalian-type CRY protein but has no transcription repressing function in vitro according to the method of Hirayama et al. (2003).

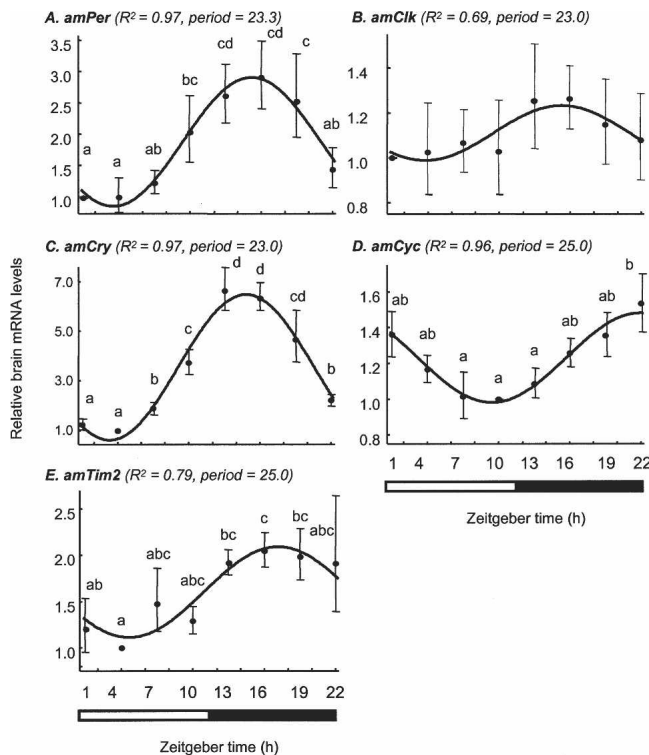


Figure 6. Brain transcript abundance over time in foragers entrained and collected in LD illumination regime. The plots show the correlation between average (\pm SE) relative mRNA levels for each time point (filled circles and bars) and a cosine model with a cycle of 23–25 h (continuous line) for bees from colony S1. (A) *amPeriod*; (B) *amClock*; (C) *amCryptochrome*; (D) *AmCycle*; (E) *AmTimeout*. In parentheses are the adjusted R^2 and period of the cosine model for each gene. Time points with different letters are significantly different (ANOVA, $P < 0.05$; LSD post hoc test, $P < 0.05$). In two additional experiments, each with bees from a different, independent colony, we obtained similar results (see text for details). The bars at the bottom of plots indicate the illumination regime during sample collection. Black bar indicates dark; open bar, light. Sample size = 6.

contrast, in mammals and other vertebrates, CRY forms a complex with PER, enters the nucleus, and inhibits CLK/BMAL1 transcriptional activity. We found that the overall high similarity between amCRY and vertebrate CRYs includes significant conservations in domains and motifs implicated in mammalian-type CRY nuclear localization and interaction with PER, CLK, and BMAL1 (Kobayashi et al. 2000; Hirayama et al. 2003; Chaves et al. 2006). The hypothesis that CRY-m proteins of insects behave similar to mammalian CRY proteins is further supported by recent in vitro analyses in *Drosophila* Schneider 2 cells (S2). Zhu et al. (2005) showed that CRY-m proteins from the mosquito *A. gambiae* and the monarch butterfly *Danaus plexippus*, as well as mCRY1, repressed transcriptional activity but were not degraded by 6-h light pulse. In contrast, dCRY and CRY-d proteins of these same insects (termed CRY1 by the investigators) were degraded by light but have no transcriptional repressive activity. The hypothesis that CRY-m proteins of insects are potent transcriptional repressors may explain how the feedback loop is closed in insects such as the honey bee (Bloch et al. 2003) in which amPER immunoreactivity is cytoplasmic throughout the day (Zhu et al. 2005).

If indeed the honey bee amCRY functions in the clock as mCRY1/2 do in mammals and bees have lost the CRY-d circadian

photoreceptor type protein, how do bees entrain their circadian rhythms to daylight cycles? One possibility is that amCRY has a dual function, a circadian photoreceptor and a core clock component, as has been suggested for mammalian CRY (Cashmore 2003; Sancar 2003) and was recently shown for *Drosophila* (Collins et al. 2006; see also Hall 2000; Rosato and Kyriacou 2001). It is also possible that the honey bee clock relies on other photopigments such as opsins. One highly appealing candidate is the insect Pteropsin protein, which is orthologous to the vertebrate visual and pineal opsins but was lost from *Drosophila* (Velarde et al. 2005). Pteropsin is a nonvisual opsin that is expressed in the honey bee in a cluster of cells in an optic lobe area that is commonly implicated in coordinating insect clocks (Helfrich-Forster et al. 1998). Cells expressing the putative clock gene Pigment Dispersing Factor (PDF) are located in the same area in the bee brain, which sets the stage for anatomical interactions between pteropsin and PDF-expressing clock cells (Bloch et al. 2003; Zavodska et al. 2003).

In our phylogenetic analysis, honey bee amCLK and amCYC cluster together with orthologs of other insects (Fig. 1), but amCYC contains a highly conserved transactivation domain at the very C-terminal end that is absent from dCYC (Rutila et al. 1998; Takahata et al. 2000; Chang et al. 2003). Honey bee amCLK is much shorter than dCLK and lacks the part of the C-terminal

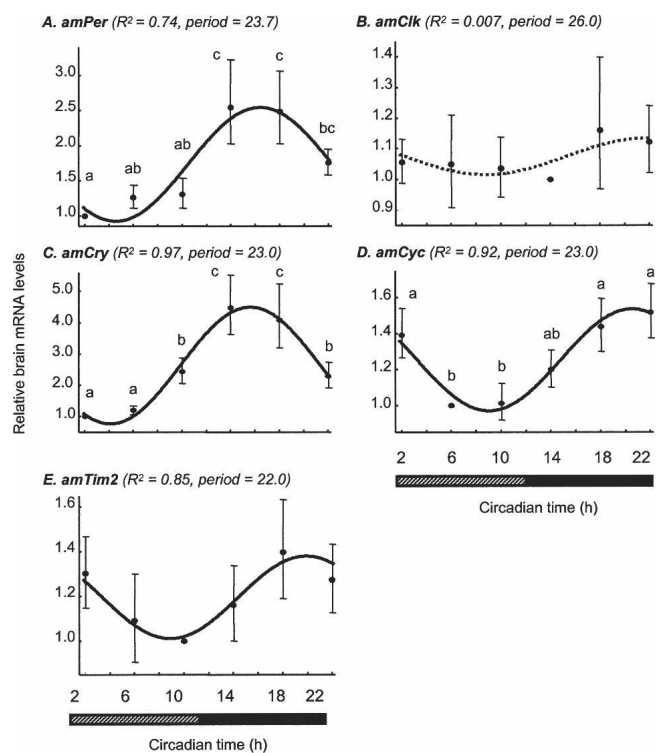


Figure 7. Brain transcript abundance over time in foragers entrained in LD and collected in DD illumination regime. Details of plots as in Figure 6, but show correlations with a cosine model with a cycle of 22–26 h for bees from colony S11. (A) *amPeriod*; (B) *amClock*; (C) *amCryptochrome*; (D) *AmCycle*; (E) *AmTimeout*. Dashed regression line indicates that a cosine model accounts for <1% of the variation over time in *amClk* mRNA levels. We obtained similar results in two additional experiments, each with bees from a different, independent colony. The bars at the bottom of plots indicate illumination regime during sample collection. Black bar indicates dark; striped bar, subjective day. Sample size = 6.

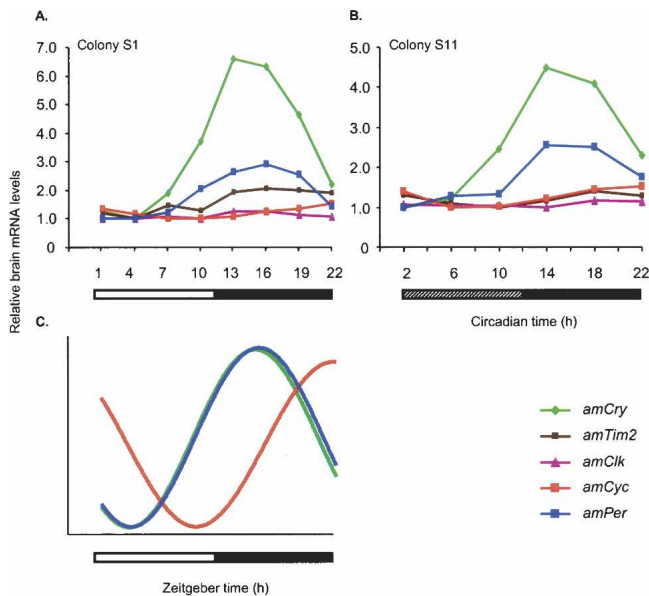


Figure 8. The relationships between brain transcript abundance over time for five putative honey bee clock genes in foragers from free-flying colonies. Brain mRNA levels for all genes were measured from the same RNA sample. (A) Foragers entrained and collected in light: dark illumination regime (LD). Colony S1, $n = 6$ bees/time point (same data as in Fig. 6). (B) Foragers entrained in LD and collected in constant darkness. Colony S11, $n = 6$ bees/time point (same data as in Fig. 7). (C) Schematic representation of the oscillations of clock genes in the honey bee brain in LD and DD illumination regimes. The phase of mRNA cycling is shown for *amPer*, *amCry*, and *amCyc* for which there is a strong correlation with a cosine model with about a 24-h cycle. The phase of *amCyc* transcript is almost in antiphase to that of *amPer* and *amCry*. For clarity, the model does not include *amClk* that does not oscillate and *amTim* for which the pattern of mRNA variation over time was not consistent across experiments. Amplitudes for the various genes are not to scale. For additional details, see Figures 6 and 7.

that is implicated in dCLK transcriptional activity (Allada et al. 1998; Darlington et al. 1998). Thus, the structure of amCYC and amCLK suggests that the honey bee is different from *Drosophila* but similar to the mouse and *A. pernyi* in which the main transactivation domain of the CLK/BMAL complex is in the C-terminal end of BMAL.

The hypothesis that the molecular clockwork in the bee is similar to *Drosophila* further predicts similarity in the temporal pattern of gene expression. The phase relationships between oscillating clock gene transcripts are influenced by the molecular organization of the transcriptional/translational feedback loops in pacemaker cells. Although additional regulatory mechanisms, as well as post-transcriptional processes, may influence clock gene transcript levels, products of genes that are transcribed and translated together typically oscillate with a similar phase. Similarly, transcription factors are likely to cycle in a different, often almost opposite, phase to that of the genes they transcribe (Reppert and Weaver 2001; Williams and Sehgal 2001; Glossop et al. 2003). This premise is generally supported by the available data. For example, in insects that have both *Tim1* and the *Cry-d*, such as the fly *Sarcophaga crassipalpis* (Goto and Denlinger 2002) and the moths *Bombyx mori* (Iwai et al. 2006) and *Antheraea pernyi* (Sauman and Reppert 1996), *Tim1* and *Per* mRNA oscillate with a similar phase. The situation is more complex in vertebrates that have multiple paralogs for CRY and PER, but still there is evidence that *Cry* products oscillate with strong amplitude and a

phase similar to that of *Per* in the mouse and other vertebrates that have only the mouse type *Cry* and *Tim2* (see Yoshimura et al. 2000; Avivi et al. 2002, 2004; Fu et al. 2002). The temporal pattern of gene expression in the honey bee brain is strikingly distinct from *Drosophila*. In the honey bee, *amPer* and *amCry* mRNA levels oscillate strongly with a similar phase, whereas in *Drosophila* they are almost in anti-phase (Emery et al. 1998; Glossop et al. 2003). In the honey bee, *amTim2* oscillates with a low amplitude at best, has an inconsistent pattern in LD and DD illumination regimes, and does not cycle with a phase similar to *amPer* in DD illumination regime (Figs. 7, 8); in *Drosophila* brain clock, *dTim1* mRNA abundance oscillates with strong amplitude and a phase similar to *dPer* (Williams and Sehgal 2001). Additional inconsistencies with the *Drosophila* model emerge from the temporal expression pattern of *amClk* and *amCyc*. In the honey bee, *amClk* mRNA levels did not vary over time, but *amCyc* appears to oscillate with low amplitude and an almost anti-phase to *amPer* and *amCry*. This pattern is distinct from *Drosophila* in which *dClk* mRNA levels oscillate in virtual antiphase to *dPer* (and *dTim*) and *dCyc* mRNA levels do not vary with time. Overall, the temporal pattern of clock gene expression in the honey bee brain is very similar to the mouse and other mammals (Reppert and Weaver 2001).

An important question raised by our findings is how the honey bee ended up with a clock more similar to mammals than to a fly. We suggest, based on our phylogenetic analyses, that two evolutionary mechanisms contributed to this outcome. The first is that the *Drosophila* clock profoundly diverged from that of the ancestral insect. The second is an evolutionary convergence of the molecular clocks of honey bees and mammals. Basal animal lineages such as *Daphnia* ("water fleas") and *Strongylocentrotus* (sea urchins) have both CRY-d and CRY-m proteins that persist in *Anopheles* (mosquito) and *Bombyx* (silkworm), and perhaps others. The sea urchin, water fleas, flies, flour beetles, and the silkworm *B. mori* also have both types of TIM. Our new findings that amCYC and a sea urchin ortholog (data not shown) contain a conserved transactivation domain supports and extends the analysis of Chang et al. (2003), suggesting that a BMAL with a C-terminal transactivation domain is the ancestral situation in animals. The transition from a transactivation domain on BMAL as found in most insects to a transactivation domain on CLK as is the case in *Drosophila* was perhaps facilitated by having transactivation domains on both CLK in BMAL as currently appears to be the situation in the basal dipteran *A. gambiae*. However, CLK containing poly-Q repeats might also be an ancient situation because it was found in mammals, bees, and the prawn *Macrobrachium rosenbergii* (gi|61353791, with a stretch of 148 Qs interrupted by only nine other amino acids). Based on our findings we suggest that *Drosophila* diverged from most other insects in that (1) it lost CRY-m, (2) it specialized on TIM1 in the negative limb of the feedback loop, and (3) it has a transactivation domain on the C-terminal of CLK instead of the C-terminal end of BMAL. Thus, while *Drosophila* has been a remarkable and pioneering model system for the study of circadian rhythms, major parts of their molecular clockworks appear to be somewhat idiosyncratic and evolutionarily derived. The evidence for the convergence of honey bees with mammals is the loss of *Cry-d* and *Tim1* from the honey bee genome and the apparent specialization in using CRY-m and TIM2. The completeness of the honey bee genome assembly makes it unlikely that a large gene such as *timeless*, and even a relatively small gene such as *Cry-d*, would be missing from the current assemblies (see The Honey Bee Genome Sequencing

Consortium 2006). The honey bee is novel among insects in losing both CRY-d and TIM1.

Our characterization of the canonical clock genes sets the stage for molecular and biochemical analysis of complex behaviors such as social synchronization, sun compass navigation, and time memory in honey bees. We reveal a previously unappreciated molecular variety in insect clocks and remarkable similarities between bees and mammals. These findings stimulate new and exciting questions concerning the origin of animal clocks, and the evolution and functional significance of species-specific variation in the molecular clockwork.

Methods

Identification and cloning of putative clock genes in the honey bee

We searched the honey bee genome assemblies, culminating in Assembly 4.0 (v20060310; <http://hgsc.bcm.tmc.edu/projects/honeybee/>), for homologs for the following *Drosophila* and mouse "clock" genes: *Period* (*Per*), *Timeless* (*Tim*), *cryptochrome* (*cry*), *Clock* (*Clk*), *Cycle* (*Cyc* = *Bmal1*), *Vrille* (*Vri*), and *Par Domain Protein 1* (*Pdp1*). We used standard algorithms to identify exons and introns on the genomic sequence of each gene and designed primers for an initial PCR amplification. We used these primers to PCR amplify (Expand High Fidelity PCR System, Roche; Bio-X-act, Accuzyme, and BioTaq DNA Polymerases from BioLine) cDNA templates that we reverse transcribed (with BioScript reverse transcription kit, BioLine) from RNA that we purified from bee brains (with Invisorb Spin Tissue RNA Mini Kit, Invitex; RNeasy Midi Kit, Qiagen; Oligotex mRNA Mini Kit, Qiagen). To obtain the ends of the 3' and 5' coding sequences for each gene of interest, we performed rapid amplification of cDNA ends (RACE; FirstChoice RLM-RACE Kit, Ambion). The 5' RACE for *Cycle* was problematic in that multiple bands were obtained and indicated several possible alternative transcription and translation starts. We employed one of these instead of the official honey bee gene model for this protein, GB11309, which may nevertheless reflect yet another alternative N terminus for this protein. Because the 3' RACE product of *amCry* did not include a stop codon, we deduced the protein C-terminal end (amino acids 535–570) bioinformatically from the corresponding genomic sequence. PCR products were sequenced directly after gel extraction and purification (PCR clean-up Gel extraction, Machrey-Nagel; MinElute Gel Extraction Kit, Qiagen) or following cloning into the pGEM-T Vector System (Promega; DH5a competent cells).

Phylogenetic analyses

We searched public genomic DNA databases at NCBI (Benson et al. 2002), FlyBase (Drysdale et al. 2005), *Bombyx mori* genome (Mita et al. 2004; Xia et al. 2004), BeeBase (http://racerx00.tamu.edu/bee_resources.html), BeetleBase (Brown et al. 2003), and the Baylor College of Medicine Human Genome Sequencing Center (<http://www.hgsc.bcm.tmc.edu/projects/>) for genes encoding homologs of known circadian rhythm proteins using TBLASTN (Altschul et al. 1997). Gene models were built manually in the PAUP editor (Swofford 2001) using the BLAST output and the expected exon/intron structures from *D. melanogaster* and mammalian genes as guides, and the Neural Network Splice Predictor program at the Berkeley *Drosophila* Genome Project to locate likely intron splice sites (http://www.fruitfly.org/seq_tools/splice.html). Protein alignments using CLUSTALX (Jeanmougin et al. 1998) were used to indicate instances of unusual gene structure. For the sea urchin *S. purpura-*

tus, the recently available NCBI RefSeq protein sequences were in some cases employed in place of the manually assembled ones.

For phylogenetic analyses, the irregularly long and poorly aligning N and C termini of the Cycle/Tango/Clock proteins and the highly divergent long C terminus of the Timeless/Timeout proteins were removed from the alignment in the final PAUP file. Amino acid distances calculated between each pair of proteins were corrected for multiple amino acid changes using TREE-PUZZLE v5.0 (Schmidt et al. 2002), with its maximum likelihood model, the BLOSUM62 amino acid exchange matrix, and uniform rates based on the actual sequences. Phylogenetic trees were constructed by using neighbor-joining followed by a heuristic search for better trees using tree-bisection-reconnection branch-swapping in PAUP* v4.0b10 (Swofford 2001). Bootstrap analysis was performed by using 1000 neighbor-joining replications with uncorrected distances and 1000 replications of maximum parsimony using full heuristic searches in PAUP*, as well as 10,000 quartet puzzling maximum likelihood steps with the BLOSUM62 matrix in TREE-PUZZLE.

Putative functional domains and motifs on honey bee clock genes

We used the SMART server (Schultz et al. 1998; Letunic et al. 2004) to demarcate sequences of motifs and domains available in its database. These sequences were confirmed with the NCBI (Marchler-Bauer et al. 2005), Pfam (Bateman et al. 2004), and ProSite (Hulo et al. 2006) databases. We relied on Hirayama and Sassone-Corsi (2005), Chang et al. (2003), and references cited therein to define additional putative clock functional domains. Additional domains and motifs were delineated based on relevant literature in which their biochemical function was defined (see Results). We used the EBI Global Alignment program (Rice et al. 2000) to demarcate domains, motifs, and post-translational modifications on honey bee orthologs and other focal proteins, and to determine the degree of amino acid residue identity/similarity between corresponding amino acid sequences on different proteins. We defined a domain as conserved only if identity >40% compared with the original sequence defined for this domain (Xu et al. 2000). For multiple sequence alignments, we used the CLUSTALX/CLUSTALW algorithm (Higgins et al. 1994). We used the Columbia University NLS-Predict algorithm (<http://cubic.bioc.columbia.edu/cgi/var/nair/resonline.pl>) to search for putative nuclear localization signals.

The expression of putative clock genes in the honey bee brain

Source colonies from which we obtained bees for our experiments were maintained in the field at a bee research facility at the Givat-Ram campus of the Hebrew University of Jerusalem, Jerusalem, Israel, according to standard commercial techniques. These bees were derived from a mixture of European races of *Apis mellifera* typical to this region. Each source colony was headed by a queen instrumentally inseminated with semen from a single drone (besides colony H1, which was headed by a naturally mated queen). Single-drone insemination helps to reduce genetic variability among bees within each experiment (average coefficient of relatedness = 0.75 due to haplodiploidy) (Page and Laidlaw 1988).

We established experimental colonies with three cohorts (500–1200 bees per cohort) of bees: 1-d-old bees, nurses, and foragers and their mother queen (all from the same source colony). We housed the colonies in a two-frame observation hive with transparent glass walls. One frame contained pollen and honey, and the second was empty for the queen to lay eggs. Foragers and nurses were identified according to standard criteria

(see Moore et al. 1998; Bloch and Robinson 2001). To obtain 1-d-old bees, we removed honeycomb frames containing pupae (sealed in cells) from source colonies in the field and immediately transferred them to a light-proof container that was then placed inside a dark incubator in ($32 \pm 0.5^\circ\text{C}$, $55 \pm 5\%$ relative humidity) from which we collected emerging bees 0–24 h after pupal eclosion.

The observation hive was placed in an environmental chamber ($29 \pm 1^\circ\text{C}$; $50 \pm 5\%$ relative humidity) and connected to the outside by a clear plastic tube (length = 0.6m, diameter = 3 cm). For the analysis of brain clock gene mRNA abundance, we collected foragers because bees performing this task are known to have strong circadian rhythms in behavior and physiology (Bloch et al. 2001; Moore 2001). In each experiment, we paint-marked a few hundred foragers that we identified in the daytime so they could be collected during times when foragers were inactive (e.g., at night). We entrained the experimental colonies for 3–6 d in a 12-h light/12-h dark (LD) illumination regime. Fluorescent lights (100 ± 30 lum/square foot) were positioned to ensure even lighting of the colonies, minimizing the possibility that bees could avoid light by hiding in dark corners of the hive. In the first set of experiments, we collected foragers on the seventh day in LD. We collected bees for mRNA analysis ($N = 15$ – 20 bees/time point) every 3 h directly into liquid N_2 , and stored them at -80°C until brain dissection (not all bees collected were analyzed for mRNA levels). We repeated this experiment three times, with bees from source colonies S1, S4, and S8. Circadian rhythmicity and entrainment for a sample of foragers were confirmed at the end of each trial by an analysis of locomotor activity for 7 d in DD (Bloch et al. 2006). In the second set of experiments, we similarly entrained the bees but collected the foragers in a DD instead of an LD illumination regime. On the night of the seventh day, we detached the tube leading to the outside, placed it inside a transparent box inside the environmental chamber (in the first experiment, we only closed the tube opening), and switched the illumination regime to DD. During day eight, we collected samples of foragers every 4 h according to the procedure used in the LD experiments. We performed all collections, manipulations, and observations during the dark phase under dim red light that bees cannot see (von Frisch, 1967). We repeated this experiment three times, with bees from source colonies S11, S12, and H1.

RNA analysis

We removed and freeze-dried bee heads and dissected the brains on a frozen dissecting dish in dry ice; the tissue remained frozen during the entire procedure. We removed compound eyes, ocelli, hypopharyngeal glands, and any other glandular tissues during dissection. Because clock gene mRNA levels are expressed on a per brain basis, we discarded all brains in which pieces of tissue were lost and analyzed only intact brains. We stored each brain individually at -80°C until mRNA quantification.

We measured mRNA levels with real-time quantitative RT-PCR using an ABI Prism 7000 appliance (Winer et al. 1999). To measure *amPer* mRNA levels, we established and validated a multiplex PCR reaction in which *amPer* and *amEF-1 α* are amplified in the same reaction tube. Total brain RNA was isolated (Invisorb Spin Tissue RNA Mini Kit, Invitex), treated with DNase (RQ1 RNase-Free DNase, Promega) and reverse-transcribed in 20–25 μL $1 \times$ RT buffer + 2.5 U/ μL Reverse Transcriptase (BioScript, Bio-Line), 4 mM deoxy NTPs mixture (Fermentas), 25 ng/ μL random hexamers (Invitrogen), and 1 U/ μL RNase inhibitor (RiboLock Ribonuclease Inhibitor, Fermentas). RNA and Random hexamers were incubated for 5 min at 70°C and immediately transferred to

ice. Reverse transcription was carried out for 10 min at 25°C , for 60 min at 42°C , for 10 min at 70°C , and then incubated at 4°C . Amplification reactions (20–25 μL) contained $1 \times$ TaqMan Universal PCR Master Mix (ABI Applied Biosystems), 0.1 μM of each primer, 0.2 μM TaqMan probe, and 20–24 ng cDNA (control samples had no reverse transcriptase). Amplification thermal profile was for 2 min at 50°C , for 10 min at 95°C , (for 15 sec at 95°C , for 1 min at 60°C) \times 40 cycles. We excluded outliers (SD among triplicates >0.3) from our analyses.

We measured levels of *amCry*, *amTim*, *amClk*, and *amCyc* with the SYBR green dye protocol. Amplification reaction (20 μL) was similar to the above but contained SYBR green master mix (ABI Applied Biosystems) instead of TaqMan Universal PCR Master Mix and did not contain oligo probes. Each cDNA sample was analyzed in triplicate. PCR reactions for all focal genes and *amEF-1 α* were loaded on the same 96-well analysis plate. For each gene we optimized primer concentration and confirmed that efficiency was similar to that of *amEF-1 α* according to ABI User Bulletin 2 (see primer sequence and concentration in Table S2 in the Supplemental material). To prevent amplification of genomic DNA, we designed the PCR primers to span over an exon–exon boundary. Therefore, in these protocols there was no need to perform a DNase treatment. All clock genes and *EF1 α* levels were measured from the same cDNA sample, which was obtained with the same RNA used to produce cDNA for *Per* measurements.

We quantified clock gene levels as in Bloch et al. (2001, 2004), using the $2^{-\Delta\Delta\text{Ct}}$ method and *amEF-1 α* as control gene for normalization (ABI User Bulletin 2) (see also Winer et al. 1999). Measurements with dot blots, Northern blots, and real-time RT-PCR indicated that levels of *amEF-1 α* did not vary with age, task or time of day (Toma et al. 2000; Bloch et al. 2001, 2004). For statistical analyses, we used $\Delta\Delta\text{Ct}$ values. We used relative mRNA levels for the correlations with a cosinus model.

Acknowledgments

We thank Ravid Sachar for help with the bees, Kim Walden for technical assistance, and the Baylor College of Medicine Human Genome Sequencing Center for making the *Apis mellifera*, *Tribolium castaneum*, and *Strongylocentrotus purpuratus* genome assemblies publicly available before publication. Financial support was provided by the Israel-US Binational Science Foundation (BSF) grant 2003-151 (to G.B. and H.M.R.), NIH grant AI56081 (to H.M.R.), and Israel Science Foundation (ISF, grant number 606/02, to G.B.).

References

- Allada, R., White, N.E., So, W.V., Hall, J.C., and Rosbash, M. 1998. A mutant *Drosophila* homolog of mammalian *Clock* disrupts circadian rhythms and transcription of *period* and *timeless*. *Cell* **93**: 791–804.
- Altschul, S.F., Madden, T.L., Schaffer, A.A., Zhang, J., Zhang, Z., Miller, W., and Lipman, D.J. 1997. Gapped BLAST and PSI-BLAST: A new generation of protein database search programs. *Nucleic Acids Res.* **25**: 3389–3402.
- Avivi, A., Oster, H., Joel, A., Beiles, A., Albrecht, U., and Nevo, E. 2002. Circadian genes in a blind subterranean mammal II: Conservation and uniqueness of the three Period homologs in the blind subterranean mole rat, *Spalax ehrenbergi superspecies*. *Proc. Natl. Acad. Sci.* **99**: 11718–11723.
- Avivi, A., Oster, H., Joel, A., Beiles, A., Albrecht, U., and Nevo, E. 2004. Circadian genes in a blind subterranean mammal III: Molecular cloning and circadian regulation of cryptochrome genes in the blind subterranean mole rat, *Spalax ehrenbergi superspecies*. *J. Biol. Rhythms* **19**: 22–34.
- Barnes, J.W., Tischkau, S.A., Barnes, J.A., Mitchell, J.W., Burgoon, P.W., Hickok, J.R., and Gillette, M.U. 2003. Requirement of mammalian *Timeless* for circadian rhythmicity. *Science* **302**: 439–442.

- Bateman, A., Coin, L., Durbin, R., Finn, R.D., Hollich, V., Griffiths-Jones, S., Khanna, A., Marshall, M., Moxon, S., Sonnhammer, E.L.L., et al. 2004. The Pfam protein families database. *Nucleic Acids Res.* **32**: D138–D141.
- Bell-Pedersen, D., Cassone, V.M., Earnest, D.J., Golden, S.S., Hardin, P.E., Thomas, T.L., and Zoran, M.J. 2005. Circadian rhythms from multiple oscillators: Lessons from diverse organisms. *Nat. Rev. Genet.* **6**: 544–556.
- Benna, C., Scannapieco, P., Piccin, A., Sandrelli, F., Zordan, M., Rosato, E., Kyriacou, C.P., Valle, G., and Costa, R. 2000. A second *timeless* gene in *Drosophila* shares greater sequence similarity with mammalian *tim*. *Curr. Biol.* **10**: R512–R513.
- Benson, D.A., Karsch-Mizrachi, I., Lipman, D.J., Ostell, J., Rapp, B.A., and Wheeler, D.L. 2002. GenBank. *Nucleic Acids Res.* **30**: 17–20.
- Bloch, G., and Robinson, G.E. 2001. Reversal of honeybee behavioural rhythms. *Nature* **410**: 1048.
- Bloch, G., Toma, D.P., and Robinson, G.E. 2001. Behavioral rhythmicity, age, division of labor and *period* expression in the honey bee brain. *J. Biol. Rhythms* **16**: 444–456.
- Bloch, G., Solomon, S.M., Robinson, G.E., and Fahrback, S.E. 2003. Patterns of PERIOD and pigment-dispersing hormone immunoreactivity in the brain of the European honeybee (*Apis mellifera*): Age- and time-related plasticity. *J. Comp. Neurol.* **464**: 269–284.
- Bloch, G., Rubinstein, C.D., and Robinson, G.E. 2004. *Period* expression in the honey bee brain is developmentally regulated and not affected by light, flight experience, or colony type. *Insect Biochem. Mol. Biol.* **34**: 879–891.
- Bloch, G., Shemesh, Y., and Robinson, G.E. 2006. Seasonal and task-related variation in free running activity rhythms in honey bees (*Apis mellifera*). *Insectes Soc.* **53**: 115–118.
- Brown, S.J., Denell, R.E., and Beeman, R.W. 2003. Beetling around the genome. *Genet. Res.* **82**: 155–161.
- Busza, A., Emery-Le, M., Rosbash, M., and Emery, P. 2004. Roles of the two *Drosophila* CRYPTOCHROME structural domains in circadian photoreception. *Science* **304**: 1503–1506.
- Cashmore, A.R. 2003. *Cryptochromes*: Enabling plants and animals to determine circadian time. *Cell* **114**: 537–543.
- Cashmore, A.R., Jarillo, J.A., Wu, Y.J., and Liu, D. 1999. *Cryptochromes*: Blue light receptors for plants and animals. *Science* **284**: 760–765.
- Ceriani, M.F., Darlington, T.K., Staknis, D., Mas, P., Petti, A.A., Weitz, C., and Kay, S.A. 1999. Light-dependent sequestration of TIMELESS by CRYPTOCHROME. *Science* **285**: 553–556.
- Chang, D.C., McWatters, H.G., Williams, J.A., Gotter, A.L., Levine, J.D., and Reppert, S.M. 2003. Constructing a feedback loop with circadian clock molecules from the Silkworm, *Antheraea pernyi*. *J. Biol. Chem.* **278**: 38149–38158.
- Chaves, I., Yagita, K., Barnhoorn, S., Okamura, H., van der Horst, G.T., and Tamanini, F. 2006. Functional evolution of the Photolyase/Cryptochrome protein family: Importance of the C terminus of mammalian CRY1 for circadian core oscillator performance. *Mol. Cell. Biol.* **26**: 1743–1753.
- Collins, B., Mazzoni, E.O., Stanewsky, R., and Blau, J. 2006. *Drosophila* CRYPTOCHROME is a circadian transcriptional repressor. *Curr. Biol.* **16**: 441–449.
- Cowell, I.G., Skinner, A., and Hurst, H.C. 1992. Transcriptional repression by a novel member of the bZIP family of transcription factors. *Mol. Cell. Biol.* **12**: 3070–3077.
- Cyran, S.A., Buchsbaum, A.M., Reddy, K.L., Lin, M.C., Glossop, N.R.J., Hardin, P.E., Young, M.W., Storti, R.V., and Blau, J. 2003. *vriII*, *Pdp1*, and *dClock* form a second feedback loop in the *Drosophila* circadian clock. *Cell* **112**: 329–341.
- Daiyasu, H., Ishikawa, T., Kuma, K., Iwai, S., Todo, T., and Toh, H. 2004. Identification of *cryptochrome* DASH from vertebrates. *Genes Cells* **9**: 479–495.
- Darlington, T.K., Wager-Smith, K., Ceriani, M.F., Staknis, D., Gekakis, N., Steeves, T.D.L., Weitz, C., Takahashi, J.S., and Kay, S.A. 1998. Closing the circadian loop: CLOCK-induced transcription of its own inhibitors *per* and *tim*. *Science* **280**: 1599–1603.
- Dissel, S., Codd, V., Fedic, R., Garner, K.J., Costa, R., Kyriacou, C.P., and Rosato, E. 2004. A constitutively active *cryptochrome* in *Drosophila melanogaster*. *Nat. Neurosci.* **7**: 834–840.
- Drysdale, R.A., Crosby, M.A., Gelbart, W., Campbell, K., Emmert, D., Matthews, B., Russo, S., Schroeder, A., Smutniak, F., Zhang, P., et al. 2005. FlyBase: Genes and gene models. *Nucleic Acids Res.* **33**: D390–D395.
- Dunlap, J.C. 1999. Molecular bases for circadian clocks. *Cell* **96**: 271–290.
- Edery, I. 2000. Circadian rhythms in a nutshell. *Physiol. Genomics* **3**: 59–74.
- Eichinger, L., Pachebat, J.A., Glockner, G., Rajandream, M.A., Sugang, R., Berriman, M., Song, J., Olsen, R., Szafarski, K., Xu, Q., et al. 2005. The genome of the social amoeba *Dictyostelium discoideum*. *Nature* **435**: 43–57.
- Emery, P., So, W.V., Kaneko, M., Hall, J.C., and Rosbash, M. 1998. CRY, a *Drosophila* clock and light-regulating *cryptochrome*, is a major contributor to circadian rhythm resetting and photosensitivity. *Cell* **95**: 669–679.
- Field, M.D., Maywood, E.S., O'Brien, J.A., Weaver, D.R., Reppert, S.M., and Hastings, M.H. 2000. Analysis of clock proteins in mouse SCN demonstrates phylogenetic divergence of the circadian clockwork and resetting mechanisms. *Neuron* **25**: 437–447.
- Froy, O., Chang, D.C., and Reppert, S.M. 2002. Redox potential: Differential roles in dCRY and mCRY1 functions. *Curr. Biol.* **12**: 147–152.
- Fu, Z.W., Inaba, M., Noguchi, T., and Kato, H. 2002. Molecular cloning and circadian regulation of *cryptochrome* genes in Japanese quail (*Coturnix coturnix japonica*). *J. Biol. Rhythms* **17**: 14–27.
- Gaunt, M.W. and Miles, M.A. 2002. An insect molecular clock dates the origin of the insects and accords with palaeontological and biogeographic landmarks. *Mol. Biol. Evol.* **19**: 748–761.
- Gehring, W. and Rosbash, M. 2003. The coevolution of blue-light photoreception and circadian rhythms. *J. Mol. Evol.* **57**: S286–S289.
- Gekakis, N., Saez, L., Delahaye-Brown, A.M., Myers, M.P., Sehgal, A., Young, M.W., and Weitz, C.J. 1995. Isolation of timeless by per protein interaction—defective interaction between timeless protein and long-period mutant *per(l)*. *Science* **270**: 811–815.
- Glossop, N.R.J., Houli, J.H., Zheng, H., Ng, F.S., Dudek, S.M., and Hardin, P.E. 2003. VRILLE feeds back to control circadian transcription of Clock in the *Drosophila* circadian oscillator. *Neuron* **37**: 249–261.
- Goto, S.G. and Denlinger, D.L. 2002. Short-day and long-day expression patterns of genes involved in the flesh fly clock mechanism: *period*, *timeless*, *cycle* and *cryptochrome*. *J. Insect Physiol.* **48**: 803–816.
- Gotter, A.L., Manganaro, T., Weaver, D.R., Kolakowski, L.F., Possidente, B., Sriram, S., MacLaughlin, D.T., and Reppert, S.M. 2000. A time-less function for mouse *Timeless*. *Nat. Neurosci.* **3**: 755–756.
- Green, C.B. 2004. Cryptochromes: Tail-ored for distinct functions. *Curr. Biol.* **14**: R847–R849.
- Griffin Jr., E.A., Staknis, D., and Weitz, C.J. 1999. Light-independent role of CRY1 and CRY2 in the mammalian circadian clock. *Science* **286**: 768–771.
- Hall, J.C. 2000. Cryptochromes: Sensory reception, transduction, and clock functions subserving circadian systems. *Curr. Opin. Neurobiol.* **10**: 456–466.
- Hardin, P.E. 2004. Transcription regulation within the circadian clock: The E-box and beyond. *J. Biol. Rhythms* **19**: 348–360.
- Hardin, P.E. 2005. The circadian timekeeping system of *Drosophila*. *Curr. Biol.* **15**: R714–R722.
- Helfrich-Forster, C., Stengl, M., and Homberg, U. 1998. Organization of the circadian system in insects. *Chronobiol. Int.* **15**: 567–594.
- Higgins, D., Thompson, J., Gibson, T., Thompson, J.D., Higgins, D.G., and Gibson, T.J. 1994. CLUSTAL W: Improving the sensitivity of progressive multiple sequence alignment through sequence weighting, position-specific gap penalties and weight matrix choice. *Nucleic Acids Res.* **22**: 4673–4680.
- Hirayama, J. and Sassone-Corsi, P. 2005. Structural and functional features of transcription factors controlling the circadian clock. *Curr. Opin. Genet. Dev.* **15**: 548–556.
- Hirayama, J., Nakamura, H., Ishikawa, T., Kobayashi, Y., and Todo, T. 2003. Functional and structural analyses of *cryptochrome*: Vertebrate CRY regions responsible for interaction with the CLOCK:BMAL1 heterodimer and its nuclear localization. *J. Biol. Chem.* **278**: 35620–35628.
- The Honey Bee Genome Sequencing Consortium. 2006. Insights into social insects from the genome of the honey bee *Apis mellifera*. *Nature* (in press).
- Hulo, N., Bairoch, A., Bulliard, V., Cerutti, L., De Castro, E., Langendijk-Genevaux, P.S., Pagni, M., and Sigrist, C.J.A. 2006. The PROSITE database. *Nucleic Acids Res.* **34**: D227–D230.
- Ivanchenko, M., Stanewsky, R., and Giebultowicz, J.M. 2001. Circadian photoreception in *Drosophila*: Functions of cryptochrome in peripheral and central clocks. *J. Biol. Rhythms* **16**: 205–215.
- Iwai, S., Fukui, Y., Fujiwara, Y., and Takeda, M. 2006. Structure and expressions of two circadian clock genes, *period* and *timeless* in the commercial silkworm, *Bombyx mori*. *J. Insect Physiol.* **52**: 625–637.
- Jeanmougin, F., Thompson, J.D., Gouy, M., Higgins, D.G., and Gibson, T.J. 1998. Multiple sequence alignment with Clustal X. *Trends Biochem. Sci.* **23**: 403–405.
- Jones, D.T. 1999. GenTHREADER: An efficient and reliable protein fold recognition method for genomic sequences. *J. Mol. Biol.* **287**: 797–815.
- Kato, T., Todo, T., Ayaki, H., Ishizaki, K., Morita, T., Mitra, S., and

- Ikenaga, M. 1994. Cloning of a marsupial DNA photolyase gene and the lack of related nucleotide sequences in placental mammals. *Nucleic Acids Res.* **22**: 4119–4124.
- Kelley, L.A., MacCallum, R.M., and Sternberg, M.J. 2000. Enhanced genome annotation using structural profiles in the program 3D-PSSM. *J. Mol. Biol.* **299**: 499–520.
- King, D.P., Zhao, Y., Sangor, A.M., Wilsbacher, L., Tanaka, M., Antoch, M.P., Steeves, T.D.L., Vitaterna, M., Kornhauser, J., Lowrey, P., et al. 1997. Positional cloning of the mouse circadian clock gene. *Cell* **89**: 641–653.
- Kobayashi, Y., Ishikawa, T., Hirayama, J., Daiyasu, H., Kanai, S., Toh, H., Fukuda, I., Tsujimura, T., Terada, N., Kamei, Y., et al. 2000. Molecular analysis of zebrafish photolyase/ cryptochrome family: Two types of cryptochromes present in zebrafish. *Genes Cells* **5**: 725–738.
- Krishnan, B., Levine, J.D., Lynch, M.K.S., Dowse, H.B., Funes, P., Hall, J.C., Hardin, P.E., and Dryer, S.E. 2001. A new role for *cryptochrome* in a *Drosophila* circadian oscillator. *Nature* **411**: 313–317.
- Kume, K., Zylka, M.J., Sriram, S., Shearman, L.P., Weaver, D.R., Jin, X., Maywood, E.S., Hastings, M.H., and Reppert, M. 1999. *mCRY1* and *mCRY2* are essential components of the negative limb of the circadian clock feedback loop. *Cell* **98**: 193–205.
- Lee, C., Bae, K., and Edey, I. 1999. PER and TIM inhibit the DNA binding activity of a *Drosophila* CLOCK-CYC/dBMAL1 heterodimer without disrupting formation of the heterodimer: A basis for circadian transcription. *Mol. Cell. Biol.* **19**: 5316–5325.
- Letunic, I., Copley, R.R., Schmidt, S., Ciccarelli, F.D., Doerks, T., Schultz, J., Ponting, C.P., and Bork, P. 2004. SMART 4.0: Towards genomic data integration. *Nucleic Acids Res.* **32**: D142–D144.
- Levine, J.D., Funes, P., Dowse, H.B., and Hall, J.C. 2002. Advanced analysis of a *cryptochrome* mutation's effects on the robustness and phase of molecular cycles in isolated peripheral tissues of *Drosophila*. *BMC Neurosci.* **15**: 3–5.
- Lin, S.C., Lin, M.H., Horvath, P., Reddy, K.L., and Storti, R.V. 1997. PDP1, a novel *Drosophila* PAR domain bZIP transcription factor expressed in developing mesoderm, endoderm and ectoderm, is a transcriptional regulator of somatic muscle genes. *Development* **124**: 4685–4696.
- Marchler-Bauer, A., Anderson, J.B., Cherukuri, P.F., DeWeese-Scott, C., Geer, L.Y., Gwadz, M., He, S., Hurwitz, D.I., Jackson, J.D., Ke, Z., et al. 2005. CDD: A Conserved Domain Database for protein classification. *Nucleic Acids Res.* **33**: D192–D196.
- McGuffin, L.J. and Jones, D.T. 2003. Improvement of the GenTHREADER method for genomic fold recognition. *Bioinformatics* **19**: 874–881.
- Mita, K., Kasahara, M., Sasaki, S., Nagayasu, Y., Yamada, T., Kanamori, H., Namiki, N., Kitagawa, M., Yamashita, H., Yasukochi, Y., et al. 2004. The genome sequence of silkworm, *Bombyx mori*. *DNA Res.* **11**: 27–35.
- Moore, D. 2001. Honey bee circadian clocks: Behavioral control from individual workers to whole-colony rhythms. *J. Insect Physiol.* **47**: 843–857.
- Moore, D., Angel, J.E., Cheeseman, I.M., Fahrbach, S.E., and Robinson, G.E. 1998. Timekeeping in the honey bee colony: Integration of circadian rhythms and division of labor. *Behav. Ecol. Sociobiol.* **43**: 147–160.
- Moore-Ede, M.C., Sulzman, F.M., and Fuller, C.A. 1983. *The clocks that time us, physiology of the circadian timing system*. Harvard University Press, Cambridge, MA.
- Moritz, R.F.A. and Kryger, P. 1994. Self-organization of circadian rhythms in groups of honeybees (*Apis mellifera* L.). *Behav. Ecol. Sociobiol.* **34**: 211–215.
- Page, R.E. and Laidlaw, H.H. 1988. Full sisters and super sisters: A terminological paradigm. *Anim. Behav.* **36**: 944–945.
- Panda, S., Hogenesch, J.B., and Kay, S.A. 2002. Circadian rhythms from flies to human. *Nature* **417**: 329–335.
- Partch, C.L., Clarkson, M.W., Ozgur, S., Lee, A.L., and Sancar, A. 2005. Role of structural plasticity in signal transduction by the *Cryptochrome* blue-light photoreceptor. *Biochemistry* **44**: 3795–3805.
- Perry, J. 2005. Weighing in on a timeless controversy. *Proteins* **61**: 699–703.
- Reppert, S.M. and Weaver, D.R. 2001. Molecular analysis of mammalian circadian rhythms. *Annu. Rev. Physiol.* **63**: 647–676.
- Rice, P., Longden, I., and Bleasby, A. 2000. EMBOSS: The European Molecular Biology Open Software Suite. *Trends Genet.* **16**: 276–277.
- Richards, S., Liu, Y., Bettencourt, B.R., Hradecky, P., Letovsky, S., Nielsen, R., Thornton, K., Hubisz, M.J., Chen, R., Meisel, R.P., et al. 2005. Comparative genome sequencing of *Drosophila pseudoobscura*: Chromosomal, gene, and cis-element evolution. *Genome Res.* **15**: 1–18.
- Robertson, H.M. 2005. Insect genomes. *Am. Entomol.* **51**: 166–171.
- Rosato, E. and Kyriacou, C.P. 2001. Flies, clocks and evolution. *Philos. Trans. R. Soc. Lond. B Biol. Sci.* **356**: 1769–1778.
- Rosato, E., Codd, V., Mazzotta, G., Piccin, A., Zordan, M., Costa, R., and Kyriacou, C.P. 2001. Light-dependent interaction between *Drosophila* CRY and the clock protein PER mediated by the carboxy terminus of CRY. *Curr. Biol.* **11**: 909–917.
- Rutila, J.E., Suri, V., Le, M., So, W.V., Rosbash, M., and Hall, J.C. 1998. CYCLE is a second bHLH-PAS Clock Protein essential for circadian rhythmicity and transcription of *Drosophila* period and timeless. *Cell* **93**: 805–814.
- Saez, L. and Young, M.W. 1996. Regulation of nuclear entry of the *Drosophila* clock proteins period and timeless. *Neuron* **17**: 911–920.
- Sakakida, Y., Miyamoto, Y., Nagoshi, E., Akashi, M., Nakamura, T.J., Mamine, T., Kasahara, M., Minami, Y., Yoneda, Y., and Takumi, T. 2005. Importin α/β mediates nuclear transport of a mammalian circadian clock component, *mCRY2*, together with mPER2, through a bipartite nuclear localization signal. *J. Biol. Chem.* **280**: 13272–13278.
- Sanada, K., Harada, Y., Sakai, M., Todo, T., and Fukada, Y. 2004. Serine phosphorylation of *mCRY1* and *mCRY2* by mitogen-activated protein kinase. *Genes Cells* **9**: 697–708.
- Sancar, A. 2003. Structure and function of DNA photolyase and *cryptochrome* blue-light photoreceptors. *Chem. Rev.* **103**: 2203–2237.
- Sauman, I. and Reppert, S.M. 1996. Circadian clock neurons in the silkworm *Antheraea pernyi*: Novel mechanisms of period protein regulation. *Neuron* **17**: 889–900.
- Sauman, I., Briscoe, A.D., Zhu, H., Shi, D., Froy, O., Stalleicken, J., Yuan, Q., Casselman, A., and Reppert, S.M. 2005. Connecting the navigational clock to sun compass input in monarch butterfly brain. *Neuron* **46**: 457–467.
- Schmidt, H.A., Strimmer, K., Vingron, M., and von Haeseler, A. 2002. TREE-PUZZLE: Maximum likelihood phylogenetic analysis using quartets and parallel computing. *Bioinformatics* **18**: 502–504.
- Schultz, J., Milpetz, F., Bork, P., and Ponting, C.P. 1998. SMART, a simple modular architecture research tool: Identification of signaling domains. *Proc. Natl. Acad. Sci.* **95**: 5857–5864.
- Sehadova, H., Sauman, I., and Sehgal, F. 2003. Immunocytochemical distribution of pigment-dispersing hormone in the cephalic ganglia of polyneopteran insects. *Cell Tissue Res.* **312**: 113–125.
- Stanewsky, R. 2003. Genetic analysis of the circadian system in *Drosophila melanogaster* and mammals. *J. Neurobiol.* **54**: 111–147.
- Swofford, D.L. 2001. *PAUP*: Phylogenetic analysis using parsimony and other methods, version 4*. Sinauer Press, New York.
- Takahata, S., Ozaki, T., Mimura, J., Kikuchi, Y., Sogawa, K., and Fujii-Kuriyama, Y. 2000. Transactivation mechanisms of mouse clock transcription factors, *mClock* and *mArnt3*. *Genes Cells* **5**: 739–747.
- Takumi, T., Nagamine, Y., Miyake, S., Matsubara, C., Taguchi, K., Takekida, S., Sakakida, Y., Nishikawa, K., Kishimoto, T., Niwa, S., et al. 1999. A mammalian ortholog of *Drosophila timeless*, highly expressed in SCN and retina, forms a complex with mPER1. *Genes Cells* **4**: 67–75.
- Tauber, E., Last, K.S., Olive, P.J.W., and Kyriacou, C.P. 2004. Clock gene evolution and functional divergence. *J. Biol. Rhythms* **19**: 445–458.
- Toma, D.P., Bloch, G., Moore, D., and Robinson, G.E. 2000. Changes in period mRNA levels in the brain and division of labor in honey bee colonies. *Proc. Natl. Acad. Sci.* **97**: 6914–6919.
- van der Horst, G.T., Muijtjens, M., Kobayashi, K., Takano, R., Kanno, S., Takao, M., de Wit, J., Verkerk, A., Eker, A.P., van Leenen, D., et al. 1999. Mammalian *Cry1* and *Cry2* are essential for maintenance of circadian rhythms. *Nature* **398**: 627–630.
- Velarde, R.A., Sauer, C.D., Walden, K.K., Fahrbach, S.E., and Robertson, H.M. 2005. Pteropsin: A vertebrate-like non-visual opsin expressed in the honey bee brain. *Insect Biochem. Mol. Biol.* **35**: 1367–1377.
- Vitaterna, M.H., Selby, C.P., Todo, T., Niwa, H., Thompson, C., Fruechte, E.M., Hitomi, K., Thresher, R.J., Ishikawa, T., Miyazaki, J., et al. 1999. Differential regulation of mammalian *Period* genes and circadian rhythmicity by *cryptochromes* 1 and 2. *Proc. Natl. Acad. Sci.* **96**: 12114–12119.
- Vodovar, N., Clayton, J.D., Costa, R., Odell, M., and Kyriacou, C.P. 2002. The *Drosophila* clock protein Timeless is a member of the Arm/HEAT family. *Curr. Biol.* **12**: R610–R611.
- von Frisch, K. 1967. *The dance language and orientation of bees*. Harvard University Press, Cambridge, MA.
- Williams, J.A. and Sehgal, A. 2001. Molecular components of the circadian system in *Drosophila*. *Annu. Rev. Physiol.* **63**: 729–755.
- Winer, J., Jung, C.K.S., Shackel, I., and Williams, P.M. 1999. Development and validation of real-time quantitative reverse transcriptase-polymerase chain reaction for monitoring gene expression in cardiac myocytes in vitro. *Anal. Biochem.* **270**: 41–49.
- Wise, S., Davis, N.T., Tyndale, E., Noveral, J., Folwell, M.G., Bedian, V., Emery, I.F., and Siwicki, K.K. 2002. Neuroanatomical studies of

- period gene expression in the hawkmoth, *Manduca sexta*. *J. Comp. Neurol.* **447**: 366–380.
- Xia, Q., Zhou, Z., Lu, C., Cheng, D., Dai, F., Li, B., Zhao, P., Zha, X., Cheng, T., Chai, C., et al. 2004. A draft sequence for the genome of the domesticated silkworm (*Bombyx mori*). *Science* **306**: 1937–1940.
- Xu, D., Xu, Y., and Uberbacher, E.C. 2000. Computational tools for protein modeling. *Curr. Protein Pept. Sci.* **1**: 1–21.
- Yoshimura, T., Suzuki, Y., Makino, E., Suzuki, T., Kuroiwa, A., Matsuda, Y., Namikawa, T., and Ebihara, S. 2000. Molecular analysis of avian circadian clock genes. *Brain Res. Mol. Brain Res.* **78**: 207–215.
- Young, M.W. and Kay, S.A. 2001. Time zones: A comparative genetics of circadian clocks. *Nat. Rev. Genet.* **2**: 702–715.
- Zavodská, R., Sauman, I., and Sehgal, F. 2003. Distribution of PER protein, pigment-dispersing hormone, prothoracicotrophic hormone, and eclosion hormone in the cephalic nervous system of insects. *J. Biol. Rhythms* **18**: 106–122.
- Zhu, H., Conte, F., and Green, C.B. 2003. Nuclear localization and transcriptional repression are confined to separable domains in the circadian protein CRYPTOCHROME. *Curr. Biol.* **13**: 1653–1658.
- Zhu, H., Yuan, Q., Froy, O., Casselman, A., and Reppert, S.M. 2005. The two CRYs of the butterfly. *Curr. Biol.* **15**: R953–R954.
- Zylka, M.J., Shearman, L.P., Levine, J.D., Jin, X.W., Weaver, D.R., and Reppert, S.M. 1998. Molecular analysis of mammalian *timeless*. *Neuron* **21**: 1115–1122.

Received December 23, 2005; accepted in revised form May 18, 2006.