



Functional mapping of a trypanosome centromere by chromosome fragmentation identifies a 16-kb GC-rich transcriptional "strand-switch" domain as a major feature

Samson O. Obado, Martin C. Taylor, Shane R. Wilkinson, et al.

Genome Res. 2005 15: 36-43

Access the most recent version at doi:[10.1101/gr.2895105](https://doi.org/10.1101/gr.2895105)

References This article cites 53 articles, 18 of which can be accessed free at:
<http://genome.cshlp.org/content/15/1/36.full.html#ref-list-1>

License

Email Alerting Service Receive free email alerts when new articles cite this article - sign up in the box at the top right corner of the article or [click here](#).

An advertisement banner with a teal background. On the left, the text reads "CRISPR and RNAi Genetic Screening. Your new superpower." In the center, there is a white box with the words "LEARN MORE". On the right, there is a photograph of a woman wearing a red mask and a red cape, and the Cellecta logo, which consists of a green molecular structure and the word "CELLECTA" below it.

To subscribe to *Genome Research* go to:
<https://genome.cshlp.org/subscriptions>

Cold Spring Harbor Laboratory Press

Functional mapping of a trypanosome centromere by chromosome fragmentation identifies a 16-kb GC-rich transcriptional “strand-switch” domain as a major feature

Samson O. Obado, Martin C. Taylor, Shane R. Wilkinson, Elizabeth V. Bromley,¹ and John M. Kelly²

Department of Infectious and Tropical Diseases, London School of Hygiene and Tropical Medicine, London WC1E 7HT, United Kingdom

Trypanosomatids are an ancient family that diverged from the main eukaryotic lineage early in evolution, which display several unique features of gene organization and expression. Although genome sequencing is now complete, the nature of centromeres in these and other parasitic protozoa has not been resolved. Here, we report the functional mapping of a centromere in the American trypanosome, *Trypanosoma cruzi*, a parasite with an unusual mechanism of genetic exchange that involves the generation of aneuploidy by nuclear hybridization. Using a telomere-associated chromosome fragmentation approach, we show that the region required for the mitotic stability of chromosome 3 encompasses a transcriptional “strand-switch” domain constituted by a 16-kb GC-rich island. The domain contains several degenerate retrotransposon-like insertions, but atypically, lacks the arrays of satellite repeats normally associated with centromeric regions. This unusual type of organization may represent a paradigm for centromeres in *T. cruzi* and other primitive eukaryotes.

[The following individuals kindly provided reagents, samples, or unpublished information as indicated in the paper: B. Andersson and R. Hernandez.]

Centromeres are the chromosomal loci where kinetochores are assembled. This nucleoprotein complex functions as an anchor for the attachment of microtubule spindles that are necessary for segregation. Metazoan centromeres tend to be large, and in *Drosophila* and mammalian chromosomes, they can extend from 250 kb to >5000 kb (Sun et al. 1997; Cleveland et al. 2003). In yeast, they range from 40 to 120 kb in the case of *Schizosaccharomyces pombe*, but unusually in *Saccharomyces cerevisiae*, they are localized to 125-bp regions that are sufficient for spindle attachment (Huang 2002). Typically, centromeres are “regional” rather than “point” entities, and are made up of arrays of highly repetitive sequences interrupted by numerous retrotransposons (Sun et al. 1997; Shueler et al. 2001; Nagaki et al. 2004). Repeat sizes are similar in most organisms (150–180 bp) and approximate to the nucleosomal length, a feature that may be of functional significance (Henikoff et al. 2001). Centromeric chromatin is heterochromatic, a property that restricts access of DNA-binding factors and results in transcriptional silencing (Grewal and Moazed 2003).

The maintenance of centromeres is at least partly epigenetic. For example, following chromosome breakage in both *Drosophila* and humans, neocentromeres can be formed in regions adjacent to the original centromere, even though these may lack satellite arrays (du Sart et al. 1997; Williams et al. 1998). However, recent

studies have also identified a role for the RNA interference (RNAi) machinery in heterochromatin formation and transcriptional silencing in *S. pombe* (Volpe et al. 2002; Hall et al. 2003a). Deletion of components of the RNAi machinery results in accumulation of complementary transcripts derived from centromeric repeats. This is associated with derepression of centromere-localized transgenes, disruption of centromere function, and blockage of the histone H3 lysine-9 methylation that mediates the formation of silent chromatin. These experiments suggest that low-level bidirectional transcription of centromeric repeats, in the context of an intact RNAi system, acts to maintain heterochromatin. The mechanism could involve the processing of double-stranded RNA into small RNAs that mediate the sequence-specific targeting of elements of the histone modification/chromatin silencing machinery. Although we await evidence for a role in centromere formation in other organisms, RNAi has been shown to function in other aspects of epigenetic gene silencing in *Drosophila* (Pal-Bhadra et al. 2004), *Arabidopsis* (Zilberman et al. 2003), *Caenorhabditis elegans* (Sijen and Plasterk 2003), and *Trypanosoma brucei* (Shi et al. 2004).

Over 10 million people in Latin America are infected with *Trypanosoma cruzi*, the insect-transmitted protozoan that causes Chagas disease (World Health Organization 2002). In common with other trypanosomatids, including *Leishmania* and the African trypanosome *T. brucei*, this parasite exhibits several unusual genetic traits. Protein-coding genes have no recognizable RNA polymerase II (pol II)-specific promoters, transcription is polycistronic, and all mRNAs are modified post-transcriptionally by the addition of a spliced leader RNA to their 5'-ends (Campbell et al. 2003). In addition, the *T. cruzi* genome contains an extensive

¹Present address: Institute for Animal Health, Compton, Berks RG20 7NN, United Kingdom.

²Corresponding author.

E-mail john.kelly@lshtm.ac.uk; fax 44-20-7636-8739.

Article and publication are at <http://www.genome.org/cgi/doi/10.1101/gr.2895105>.

range of repetitive elements (Requena et al. 1996), many genes are organized in tandem arrays, and the surface antigens are encoded by several extremely large heterogeneous gene families (Aguero et al. 2000). There is significant variation in the size of chromosomes between *T. cruzi* strains (Henriksson et al. 1996), and although the genome is generally diploid, the sizes of homologous chromosomes often differ considerably (Santos et al. 1997). This unusual phenomenon is also observed in *T. brucei* and *Leishmania*. Sequence elements that have a role in segregation in these organisms have not been identified. Furthermore, although many core centromere proteins are highly conserved throughout evolution, there is a lack of obvious homologs in the trypanosomatid databases.

The *T. cruzi* CL Brener clone that was selected for sequencing has a haploid genome size of about 45 Mb and at least 30 chromosomes ranging from 0.45 to 3.5 Mb (Cano et al. 1995). The karyotype of this parasite remains poorly defined, and the precise relationship between chromosome homologs is unresolved. Completion of the genome project has been complicated by the finding that this clone is a hybrid of two distantly related lineages (Machado and Ayala 2001). This has had major implications. First, allelic copies of genes may vary in sequence by at least 1.5%. Second, due to recombination, chromosomes can represent a mosaic of the parental genotypes. Third, trisomy occurs in the case of some chromosomes. This latter phenomenon is probably related to the nature of genetic exchange in this organism, which unusually appears to require cell fusion within the mammalian host, followed by a return toward a diploid genotype (Gaunt et al. 2003). The mechanisms involved in chromosome loss/retention in this context are unknown.

In parallel with the *T. cruzi* genome project, we have developed a telomere-associated chromosome fragmentation vector as a tool to explore structural and functional aspects of chromosomes in this parasite. Here, we outline the properties of the vector and describe its use to delineate, for the first time, the sequences required for mitotic stability of a trypanosome chromosome.

Results

The chromosome fragmentation vector pTEX-CF

pTEX-CF (Fig. 1) was designed to facilitate telomere-associated chromosome fragmentation in *T. cruzi*. Our aim was to achieve this through targeted integration by single crossover, with a new telomere supplied by the vector. pTEX-CF contains the *neo^r* gene as the selectable marker with the flanking regions of the tandemly repeated *T. cruzi* glycosomal glyceraldehyde-3-phosphate dehydrogenase (*gapdh*) genes providing the necessary RNA processing elements (Kendall et al. 1990). A DNA fragment containing a ribosomal promoter, which has been shown to mediate high-level expression in transfected cells (Martinez-Calvillo et al. 1997) was inserted upstream of *neo^r*. We reasoned that inclusion of the ribosomal promoter should ensure expression of the drug-selectable marker irrespective of the direction of pol II-mediated polycistronic transcription at the site of integration. Also included in the vector is a DNA fragment containing 21 copies of the telomeric repeat hexamer (5'-TTAGGG), and a multiple cloning site for insertion of the targeting sequences. Thus, following the insertion of *T. cruzi* genomic DNA sequences into pTEX-CF, restriction digestion with the appropriate enzyme produces a lin-

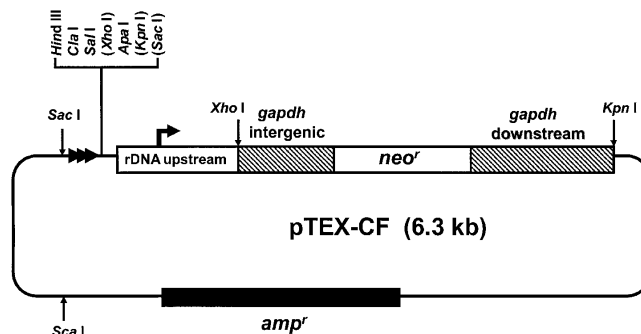


Figure 1. The chromosome fragmentation vector pTEX-CF. The vector was constructed by modifying the expression construct pRIBOTEX, as described in Methods. The *gapdh*-flanking sequences (hatched boxes) ensure correct processing of the *neo^r* transcript. Targeting fragments can be cloned in both orientations into the multiple cloning site (MCS). Bracketed restriction sites in the MCS are not unique. The location and direction of the repeated telomeric hexamers are indicated by horizontal arrowheads. The plasmid DNA (thin line) is derived from pBluescript and contains an *amp^r* gene (filled box). Following insertion of the targeting fragment into the MCS, the construct can be used for transfection after linearization with the appropriate restriction enzyme.

ear DNA fragment with the targeting sequences at one end and the telomeric sequences the other (see Fig. 2A).

Segmental monosomy in *T. cruzi* generated by chromosome fragmentation

To test the feasibility of generating segmental monosomy, we first targeted the mitochondrial peroxiredoxin (*Tcmpx*) and cytosolic iron superoxide dismutase (*Tcsod*) loci. In the CL Brener clone, *Tcmpx* is localized on chromosome homologs of 1.0 and 1.6 Mb (Wilkinson et al. 2000). Epimastigotes were transfected with a linearized pTEX-CF construct containing the targeting fragment shown in Figure 2A and drug-resistant clones isolated. When chromosomal DNA was examined after Southern blotting of CHEFE (contour clamped homogeneous electric field electrophoresis) gels, only the 1.0-Mb homolog could be detected by the *Tcbpp1* probe (Fig. 2B). A plasmid DNA probe identified a single 1.4-Mb band, which we confirmed to be the truncated product of the 1.6-Mb chromosome. Southern analysis of *ScaI*-digested genomic DNA was also performed. This enzyme liberates telomeric repeats attached to 900 bp of plasmid DNA (Fig. 2A). The resulting fragments can be visualized as a smear ranging from 1.5 to 4 kb (Fig. 2C), compared with the 1.1 kb originally present in the integration vector. Together, these results localize the *Tcmpx* gene 200 kb from the end of the 1.6-Mb chromosome. It is also implicit that polycistronic transcription at this locus occurs toward the center of the chromosome. There was no detectable phenotype associated with loss of this large region of DNA.

The *Tcsod* gene lies next to the peroxidase gene *TcgpII* (Wilkinson et al. 2002) and is located on chromosome 1 (Temperon et al. 1996), which occurs as homologs of 0.45- and 1.3-Mb. When parasites were transfected with a pTEX-CF construct containing *Tcsod* orientated in the direction of transcription, both chromosomes could be targeted. Integration into the 0.45-Mb homolog generated a 0.4-Mb product (Fig. 3A). This is consistent with preliminary analysis of the genome sequence data, which indicates that a *Tcsod* gene is located 48 kb from a telomere (B. Andersson, pers. comm.). It can also be inferred that in the larger homolog, the gene is in a similar position (Fig. 3A), although we can be less precise about the distance from the telo-

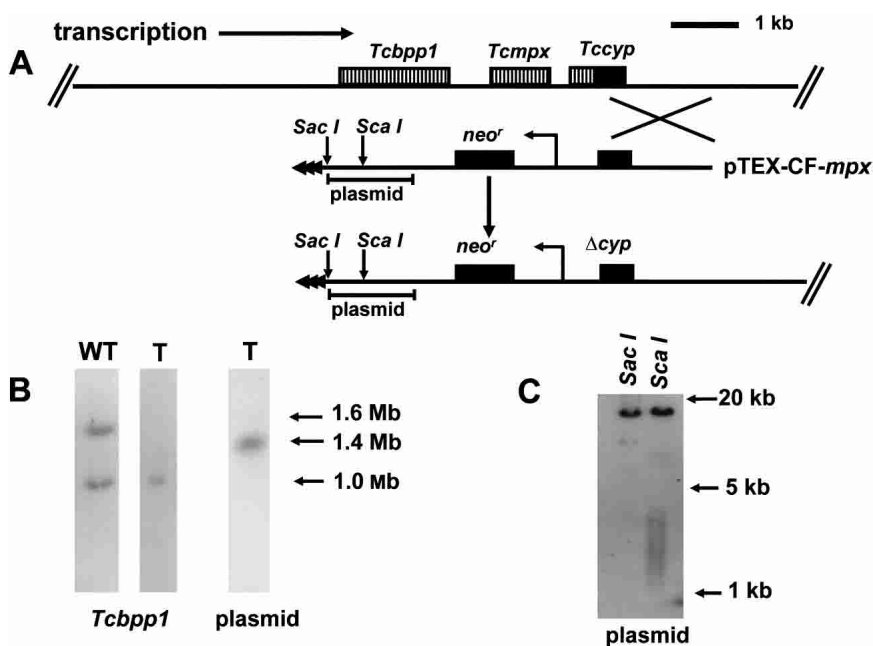


Figure 2. (A) Map of the *Tcmapx* locus (top line) and integration of the pTEX-CF-*mpx* construct. The direction of polycistronic transcription, toward the center of the chromosome, is shown. The 1.5-kb fragment used for targeting is indicated by the crossed lines, and Δcyp identifies the disrupted cyclophilin gene formed as a result of the integration event. Expression of the *neo^r* gene is under control of the rDNA promoter. Telomeric sequences supplied by the vector are shown as horizontal arrowheads in the truncated chromosome (bottom line). The position of the plasmid sequences used as a probe in Figure 2, B and C is indicated. (B) Autoradiographs of Southern blots of *T. cruzi* chromosomal DNA separated by CHEFE and hybridized with a β -propeller protein gene (*Tcbpp1*) (Bromley et al. 2004) or plasmid DNA probes as indicated. (WT) Wild type; (T) transfected cells. (C) Southern blot of restriction-digested genomic DNA from transfected cells (see Fig. 2A for the location of the restriction sites) probed with plasmid DNA. The telomeric sequences are identifiable as a smear ranging from 1.5 to 4 kb. The top band in both lanes allows the position of the corresponding upstream restriction sites in the chromosomal DNA to be established.

mere, due to the lack of resolution in this part of the CHEFE gel. However, it is clear that the size heterogeneity between chromosome homologs does not result from the presence of additional sequences between this *Tcsod* locus and the downstream telomere (Fig. 3B). Both of the truncated chromosomes were found to be stable for at least 100 generations (20 wk continuous culture), following the removal of selective drug pressure.

These experiments therefore demonstrate that the pTEX-CF vector can be used to generate partially monosomic cell lines. This could have several applications, including confirmation of the *T. cruzi* genome map, more rapid approaches to functional analysis, and delineation of sequences required for mitotic stability.

Targeted dissection of chromosome 3

We next focused on chromosome 3, where sequencing of a 93-kb contig (Andersson et al. 1998) had identified a transcriptional "strand-switch" region, in which a 16-kb GC-rich domain, containing degenerate retroelements, separates two directional gene clusters. The corresponding region of *T. bru-*

cei chromosome 1, which is syntenic with this contig, has been postulated to have centromeric properties on the basis of a low recombination frequency (Hall et al. 2003b). Chromosome 3 is present as homologs of 0.60 and 1.0 Mb in the clone CL Brener. Unusually, on the basis of hybridization intensity with several independent probes, we found that this chromosome is trisomic, with two copies of the smaller homolog and one of the larger (Fig. 4). We used single-copy targeting sequences located adjacent to the strand-switch region (Fig. 5) to generate several truncated forms of these chromosome homologs. The data presented in Figure 4 illustrate the type of analysis performed. Here, integration was targeted to sites on each side of the strand-switch region, a glucose-6-phosphate isomerase (*GPI*) gene (Fig. 4B) (site 8, Fig. 5), and an unidentified open reading frame (*UPI*) (Fig. 4B) (site 1, Fig. 5).

The 19 clones isolated when *GPI* was targeted could be subdivided into two groups. The first (two clones) was characterized by the loss of the 1.0-Mb homolog and by the appearance of a 0.33-Mb product (Track 1, Fig. 4B). This was associated with an increase in the copy number of the 0.60-Mb homolog (four copies as assessed by phosphorimaging). On the basis of the hybridization pattern (Track 1), it can be concluded that the right arm of the 1.0-Mb chromosome has been lost from the cell.

This deletion of almost 0.70 Mb of DNA had no effect on morphology, growth, differentiation into the metacyclic (infectious) form, or invasion of cultured macrophages (data not shown). Both clones also produced a lethal infection in the SCID mouse model (five mice per group) 19–21 d post-

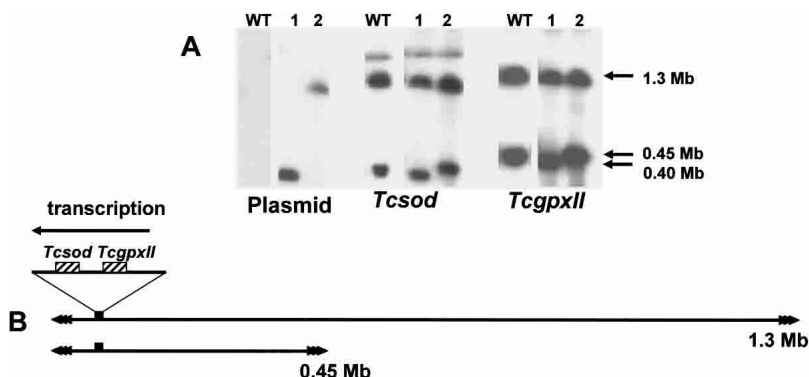


Figure 3. (A) Southern analysis of *T. cruzi* clones representing the two types of event observed when the *Tcsod* locus was targeted. Chromosomal DNA from wild-type (WT) cells and transformed clones (1 and 2) was separated by CHEFE and hybridized with plasmid, *Tcsod*, or *Tcgp11* probes. The plasmid DNA identifies the truncated chromosomes that result from integration. (B) Schematic showing the location of the *Tcsod* locus on the 0.45- and 1.3-Mb chromosomes and the direction of polycistronic transcription (inferred from the orientation of the targeting fragment). Integration at the *Tcsod* locus deletes the region between the gene and the adjacent downstream telomere. The precise location of the locus on the larger homolog cannot be assessed with accuracy, because it is difficult to resolve the 1.3-Mb chromosome and its slightly smaller truncated product.

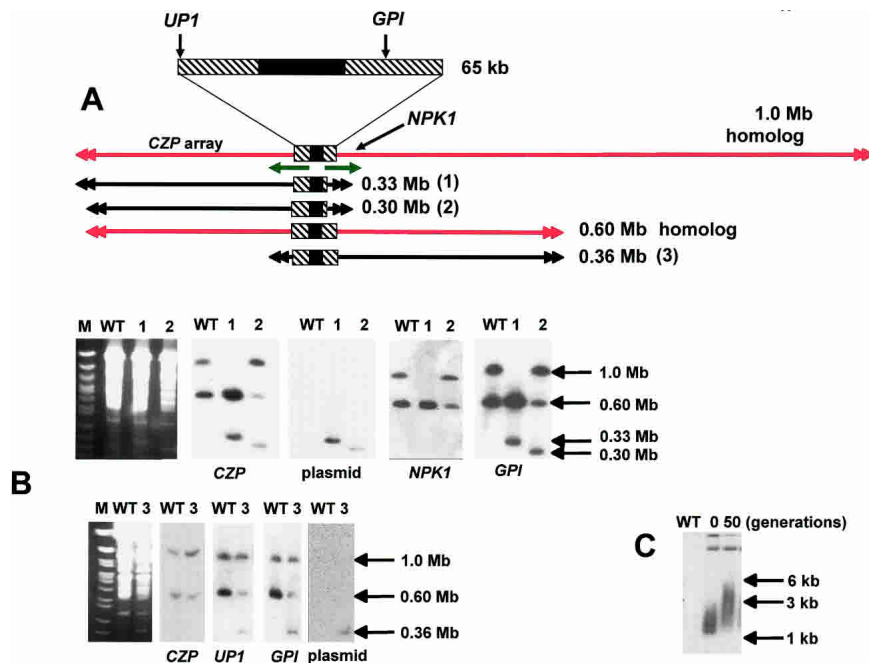


Figure 4. Truncation of the 1.0- and 0.60-Mb homologs of chromosome 3. (A) A schematic showing the full-length chromosomes (drawn in red) and the truncated products (1–3) (drawn in black). Product 1 was derived from the 1.0-Mb homolog, and was generated by integration at the *GPI* locus. Products 2 and 3 were derived from the 0.60-Mb homolog, and were generated by integration at the *GPI* and *UP1* loci, respectively. The 65-kb region encompassing the transcriptional strand-switch region (common to both homologs) has been expanded. The directions of polycistronic transcription are indicated by green arrows (for details, see also Fig. 5). (B) Chromosomal DNA from wild-type (WT) and transformed cells was analyzed by CHEFE (left panels, ethidium stained gels; other panels, autoradiographs of similar blots probed as indicated). (Lanes 1, 2, 3) The corresponding truncated chromosomes. (C) Blot of genomic DNA from cells containing the 0.36-Mb truncated product (as in lane 3, above) digested with *Scal*. Comparison of telomere lengths (plasmid probe) in the initial clonal population and after 50 generations.

inoculation (Methods), the same period that was observed with nontransformed parasites. Several conclusions can be drawn from these data. First, the right arm of the 1.0-Mb chromosome contains most of the additional 400 kb of sequence that is responsible for the size heterogeneity between the two homologs. Second, although we do not yet know the nature of these additional sequences, their deletion from the larger homolog has no apparent phenotypic consequences. Finally, the observed increase in chromosome copy number suggests the presence of dose-dependent gene(s) in the deleted right arm of the 1.0-Mb homolog.

In the second group of clones (17), we identified a new chromosome band of 0.30 Mb (Track 2, Fig. 4B). Hybridization intensities were consistent with one copy each of the 0.30- and 0.60-Mb chromosomes and two copies of the 1.0-Mb homolog in these cells. It can be inferred that the 0.30-Mb band is a truncated product of the 0.60-Mb homolog, and that the left arm of this chromosome is 30 kb shorter than the corresponding region of the larger homolog (cf. Tracks 1 and 2, Fig. 4B).

When *UP1* was targeted, all clones were found to contain a new chromosome band of 0.36 Mb derived, by inference, following deletion of the left arm of the 0.60-Mb homolog (Fig. 4B). Again, this was associated with duplication of the 1.0-Mb chromosome. This may reflect the presence of pseudogenes in the remaining 0.60-Mb homolog. We also investigated telomere elongation on the 0.36-Mb truncated chromosome by examining

Scal-digested genomic DNA. When a newly isolated clone was analyzed (Fig. 4C), the resulting fragments were visualized as a smear ranging from 1.2 to 3.0 kb, representing telomere lengths from 0.1 to 1.9 kb. After 50 generations, the smear extended up to 6 kb. This is a more rapid rate of *de novo* telomere elongation than has been observed in *T. brucei*, where newly formed telomeres were found to initially increase in length by ~8 bp per generation (Horn et al. 2000).

In total, parasites were transfected with 14 different fragmentation constructs targeted at sites proximal to the chromosome 3 strand-switch region. With six of these (marked red, Fig. 5), we were unable to generate transformants in which integration had occurred at the targeted locus, despite multiple rounds of transfection. In each of these cases, the targeting fragment had been derived from the 16-kb GC-rich domain, or from sequences immediately adjacent to it. This refractoriness to integration may reflect properties associated with local chromatin, perhaps similar to those of centromeric heterochromatin, which restricts access of DNA-binding factors and confers transcriptional silencing (Grewal and Moazed 2003). In all other instances, truncated chromosomes of the predicted size were generated. These were verified as outlined in Figure 4 and Methods. The large majority of truncated chromosomes were derived from the smaller homolog, and

each of these deletion events was associated with an increase in the copy number of the larger chromosome.

Mitotic stability of truncated forms of chromosome 3

To assess the effects on mitotic stability, transformed clones containing shortened forms of the 0.60-Mb homolog were cultured in the absence of G418. In these circumstances, the increased copy number of the 1.0-Mb homolog should negate any effect that dose-dependent genes might have on the selective retention of chromosomes where fragmentation had led to the deletion of a functional centromere. Genomic DNA was prepared and hybridized with a plasmid probe to determine the level of each truncated chromosome in the population (Fig. 5). All but two were found to be stable for at least 100 generations, even though in some cases (integration at sites 3 and 6; Fig. 5) the shortened chromosomes did not contain overlapping regions of sequence. This therefore excludes the possibility that the centromere in this *T. cruzi* chromosome is a point entity, as in *S. cerevisiae* (Cheeseman et al. 2002). In contrast to the above, truncated chromosomes generated by integration at the *UP1* (site 5) and *UP3* (site 4) loci were mitotically unstable and had largely disappeared from the population 10 generations after the removal of selective pressure. Loss of these chromosomes was confirmed by CHEFE analysis. We propose that these fragmentations delineate the functional centromere of chromosome 3 to elements within the 65-kb sequence shown in Figure 5. Alternative explanations,

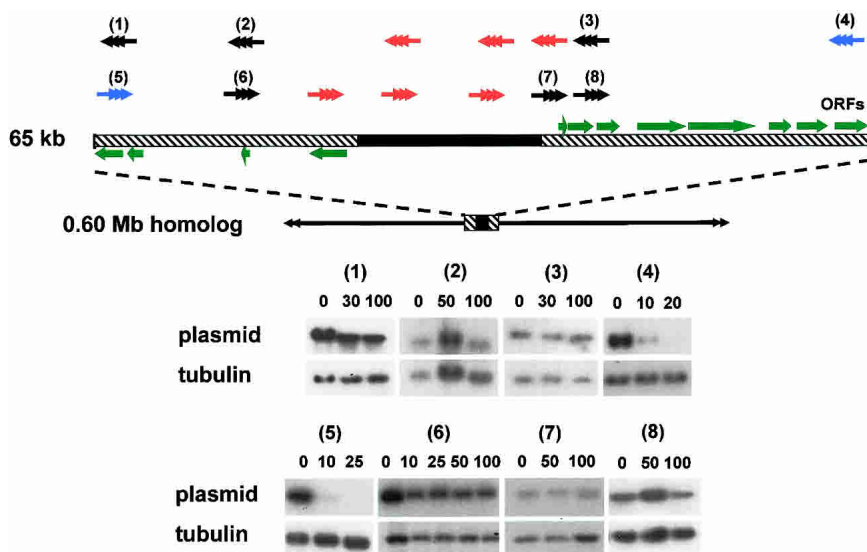


Figure 5. Mitotic stability of truncated chromosomes assessed by hybridization with plasmid DNA. Expansion of the locus encompassing the strand-switch domain shows the GC-rich (filled box) and coding (hatched boxes) regions. Green arrows identify ORFs (confirmed and potential) and point in the direction of polycistronic transcription. The sites of integration-mediated chromosome fragmentation (1–8) are shown with arrowheads representing the new telomeres. This numbering system is unrelated to that in Figure 4. (Black) Mitotically stable truncated chromosomes; (blue) mitotically unstable; (red) integration not achievable. Transfected clones were grown in the absence of G418 for the generations indicated above the corresponding track. Genomic DNA was probed with plasmid DNA (autoradiographs 1–8), then rehybridized with β -tubulin to control for loading.

which implicate loss of a replication origin, are unlikely. Replication of eukaryotic chromosomes can be initiated at multiple sites (Gilbert 2001), and in *T. cruzi*, there are no apparent restrictions on the replication of plasmid-based constructs (Kelly et al. 1992).

The region deleted in these experiments has been fully sequenced (Andersson et al. 1998). It encompasses the 16-kb GC-rich central core, which separates two gene clusters transcribed on opposite strands (Fig. 6). This domain is composed predominantly of degenerate retroelements, including a composite VIPER (vestigial interposed retroelement)/SIRE (short interspersed repetitive element) and two degenerate non-LTR retrotransposon sequences related to the L1Tc autonomous retroelement (Vazquez et al. 2000; Bringaud et al. 2002). These flank both sides of a U2snRNA gene and a truncated cruzipain pseudogene. Unusually, this region lacks any satellite repeats similar to those present in the centromeres of other eukaryotes. This represents a major structural difference that may be a feature of centromeres in *T. cruzi*. The retention of mitotic stability in the absence of this GC-rich core (integration at sites 3 and 6, Fig. 5) could be indicative of neocentromere formation. Neocentromeres can arise after chromosome breakage in higher eukaryotes (du Sart et al. 1997; Williams et al. 1998) as a result of the spread of heterochromatin into adjacent euchromatic regions, despite the fact that such regions may lack characteristic centromere sequences. This phenomenon limits the potential for more accurately defining the boundary of functional centromeres using the fragmentation approach.

Discussion

There are no experimental data on the structure or organization of centromeres in trypanosomatids, or other parasitic protozoa.

To address this issue in *T. cruzi*, we have developed a fragmentation vector able to delete defined regions of chromosomal DNA. This approach has been used previously to investigate chromosome structure in other organisms (Farr et al. 1992; Itzhaki et al. 1992; Tamar and Papadopoulou 2001). Initially, we generated partially monosomic cell lines by targeting the *Tcmpx* and *Tcsod* loci, and deleted 200 kb and 50 kb of DNA, respectively. With the completion of the *T. cruzi* genome project, it should be feasible to undertake a systematic functional screen of all of the genes in these deleted regions using a “single-knockout” strategy. This could be extended to other areas of the genome as the appropriate monosomic lines are generated. New, more high-throughput procedures such as these are urgently required if the genome sequence is to be fully dissected at the functional level, since targeted gene deletion is very time consuming in *T. cruzi* (each round of gene disruption taking at least 3 mo), and the parasite lacks the enzymatic machinery necessary for RNAi-based approaches (DaRocha et al. 2004; our own observations).

When targeting chromosome 3, we were able to delete up to 700 kb in the case of the larger homolog. With the smaller homolog, both arms could be deleted in separate experiments. However, in all of these cases, we observed that fragmentation was associated with an increase in copy number, even though this chromosome is already trisomic. To our knowledge, this is the first report of apparent “diploid insufficiency” in any organism. One explanation could be that the trisomy of chromosome 3 has allowed deleterious mutations in some dose-dependent genes to be maintained in the CL Brener clone. Subsequent loss of nonmutant allele(s) due to fragmentation could then be lethal or detrimental, resulting in a selective advantage to those cells containing additional copies of the chromosome. The plasticity of trypanosomatid genomes has been well documented (Myler 1993; Lanzer et al. 1995; Gueiros-Filho and Beverley 1996).

It has proved difficult to accurately map the boundaries of centromeres in most organisms (Choo 2000; Henikoff et al. 2001), and experimental verification is rarely straightforward. Furthermore, in higher eukaryotes, their large size and highly repetitive structure has restricted complete sequence analysis to a single instance (Nagaki et al. 2004). In parasitic protozoa, the nature of centromeres is a major gap in our understanding of chromosome structure and propagation. A putative centromere has been delineated to a 400-kb fragment of chromosome 5 of the trypanosomatid *Leishmania* (Tamar and Papadopoulou 2001), but the sequence of this region is not yet available. With *Leishmania* chromosome 1, large targeted deletions have led to the tentative suggestion that clusters of subtelomeric repeats may have a role in mitotic stability (Dubessay et al. 2001, 2002). In *T. brucei*, numerous minichromosomes, which act as a store of divergent surface antigen genes, are constructed around palindromes based on 177-bp repeats. It has been postulated that this type of organization may have a role in centromeric function

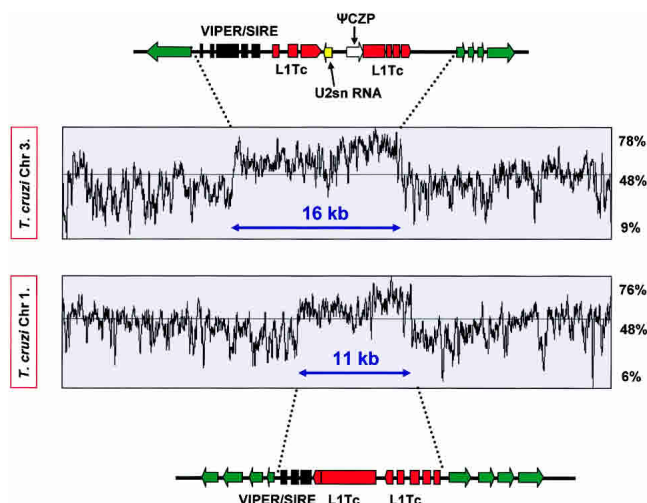


Figure 6. Organization of the GC-rich strand-switch regions on *T. cruzi* chromosomes 1 (lower) and 3 (upper). Green arrows identify the first ORFs of the polycistronic gene clusters and indicate the direction of transcription. The degenerate retrotransposon-like VIPER/SIRE element (black) and the L1Tc autonomous retroelements (red) are indicated. This region of chromosome 3 also contains a truncated cruzipain pseudogene (czp) and a U2snRNA gene. In chromosome 1, the strand-switch domain is located ~120 kb from the telomere, 70-kb upstream of the *Tcsod* locus (Fig. 2), between ORFs identified by temporary systematic-ids Tc00.1047053508707.234 and 270.

(Wickstead et al. 2004). In the malaria parasite *Plasmodium falciparum*, an 8–12-kb noncoding domain present on each chromosome has been proposed as a candidate centromere (Bowman et al. 1999). This region contains an extremely AT-rich core that includes several repeat elements. However, there are no experimental data to confirm that these domains have a role in conferring mitotic stability.

In *T. cruzi*, our data imply that the locus required for the mitotic stability of chromosome 3 centers on a 16-kb GC-rich strand-switch region that is composed predominantly of degenerate retrotransposon-like elements, but lacks the arrays of satellite repeats characteristic of centromeric DNA in higher eukaryotes. These areas between polycistronic transcription units are thought to be one of the few transcriptionally quiescent parts of the *T. cruzi* genome. However, this property cannot be a sole indicator of centromeric function, since chromosome 3, like most trypanosomatid chromosomes contains more than one strand-switch region (B. Andersson, pers. comm.). When a fully contiguous *T. cruzi* sequence is available, it should be possible to test experimentally regions of the genome with a similar type of organization to the GC-rich strand-switch domain of chromosome 3 and to identify the elements that define a functional centromere in this organism. Currently, there is a 300-kb contig that contains more than half the sequence of the small homolog of chromosome 1 (Fig. 6). This extends from a telomere toward the center of the chromosome and encompasses the *Tcsod* locus (Fig. 3). Examination of this contig reveals the presence of a single 11-kb GC-rich strand-switch domain that has remarkable organizational similarity with the element that we characterized on chromosome 3 (Fig. 6), including the presence of sequences related to the VIPER, SIRE, and L1Tc retroelement families. Importantly, this GC-rich region is retained on the stable truncated chromosome generated following integration at the *Tcsod* locus.

T. brucei chromosome 1 and *Leishmania major* chromosome 12 are syntenic with chromosome 3 of *T. cruzi* at the strand-switch locus (Ghedini et al. 2004). The corresponding *T. brucei* strand-switch region (~40 kb) contains two full-length *Ingi* retrotransposon-like elements, closely linked to a DIRE (degenerated *Ingi*/L1Tc-related element), and shows evidence of low recombination frequency, a feature of centromeric DNA (Hall et al. 2003a). In addition, this domain includes a 5.5-kb AT-rich stretch composed predominantly of 58-bp degenerate repeats. A DIRE is also present in the 10-kb strand-switch domain of *L. major* chromosome 12. Previously, retroelements had not been identified in *L. major* (Ghedini et al. 2004). It will be interesting to determine whether the conserved organization of these strand-switch regions is of functional significance.

There is a large epigenetic component involved in centromere maintenance and recognition, although recent evidence also implicates RNA-mediated mechanisms. In fission yeast, the RNAi system is necessary for transcriptional silencing at centromeres (Hall et al. 2003b) and for heterochromatin formation (Volpe et al. 2002). Disruption of RNAi in *T. brucei* has been reported variously to be associated with increased abundance of retroposon transcripts (Shi et al. 2004) and with defects in segregation and assembly of the mitotic spindle (Durand-Dubief and Bastin 2003). In *T. cruzi*, however, the lack of functional RNAi excludes a role for this system and highlights a possible major difference in the mechanisms of centromere maintenance between trypanosome species.

In higher eukaryotes, a role for sequence-specific binding in centromere function has been inferred from the adaptive evolution of the satellite repeat sequences and the kinetochore-associated histone CenH3. This dynamic process has been proposed as an important mechanism in speciation and seems to be driven by events within the developing oocyte, where four copies of each chromosome are formed, only one of which is retained in the haploid nucleus (Henikoff et al. 2001). Thus, centromeres that more efficiently bind kinetochore proteins gain a slight selective advantage over the other homologs. In turn, mutations in centromeric proteins, such as CenH3, that act to restore parity of centromere binding are positively selected. This process of “meiotic drive,” allied with the potential of centromeric DNA to undergo rearrangement by various mechanisms, is thought to lead to the extensive divergence of centromeric sequences, even between closely related species (Henikoff and Malik 2002).

Although reproduction in *T. cruzi* is predominantly asexual, genetic exchange does occur and involves cell fusion within the mammalian host, followed by a return toward diploidy (Gaunt et al. 2003). This explains the wide range of DNA content in naturally occurring *T. cruzi* isolates (McDaniel and Dvorak 1993), including the occurrence of trisomy in the CL Brener clone. Factors that influence chromosome loss/retention following nuclear hybridization are unknown, but must reflect looser restraints on ploidy and tension-mediated separation of sister kinetochores (Dewar et al. 2004). We propose that a process analogous to meiotic drive, involving competition between homologous centromeres, may also occur as hybrid progeny move from tetraploidy to diploidy. The nature of the chromosome 3 centromere, which is made up predominantly of degenerate retroelements, offers considerable scope for sequence divergence. This could provide a mechanism for the reproductive isolation of parasite lineages.

Methods

Vector construction

The chromosome fragmentation vector pTEX-CF (Fig. 1) was constructed by modifying the *T. cruzi* expression plasmid pRIBOTEX (Martinez-Calvillo et al. 1997) (a gift from Dr. Roberto Hernandez, U.N.A.M., Mexico City). Briefly, the multiple cloning site (MCS) in this vector was first replaced with the MCS from pBluescript (Stratagene), into which was inserted a BamHI/HindIII fragment containing 21 copies of the telomere hexamer repeat 5'-TTAGGG. Targeting fragments to be inserted into the MCS were amplified by PCR, verified by sequencing, and confirmed as single copy by Southern analysis of genomic DNA. Vector DNA to be used for transfection was linearized with HindIII and purified by gel electrophoresis.

Parasite growth and analysis of transformants

T. cruzi epimastigotes were cultured at 28°C in RPMI 1640 medium (Sigma) containing the supplements described (Kendall et al. 1990). For transfection experiments, linear DNA (~1–2 µg) was introduced into epimastigotes by electroporation (Kelly et al. 1992). Transformed cells were selected over 6–8 wk in the presence of 100 µg mL⁻¹ G418, and then cloned by limiting dilution. Clones were analyzed by Southern blotting of CHEFE-separated chromosomal DNA and restriction-digested genomic DNA, and by sequence determination of transformant-specific PCR fragments generated with primers that straddled the expected integration site. Intact *T. cruzi* chromosomes for CHEFE analysis were extracted using an agarose-embedding technique (Gibson and Miles 1986) and separated with a Bio-Rad CHEF Mapper system using an auto-algorithm set to the appropriate molecular mass range. Gels were blotted onto nylon membranes using standard techniques, and where required, signal intensity following hybridization was quantified by PhosphorImager analysis (Molecular Dynamics).

Assessing mitotic stability

Transformed clones containing various truncated forms of the 0.60-Mb homolog of chromosome 3 were generated (Fig. 5). These were continuously cultured (five generations per week) in the absence/presence of G418, and DNA isolated at various time points. Mitotic stability was assessed by Southern hybridization using plasmid DNA as a probe for truncated chromosomes. Blots were reprobbed with the β-tubulin gene to control for loading. Results were confirmed by CHEFE analysis.

Acknowledgments

We thank our colleagues Bjorn Andersson, David Baker, David Horn, and Michael Miles for advice and for critical reading of this manuscript, and Roberto Hernandez for providing the pRIBOTEX construct. We acknowledge Andersson et al. (1998), who produced the chromosome 3 DNA data utilized in this work (Accession nos. AF052831–AF052833), and thank Bjorn Andersson and Daniel Nilsson (Karolinska Institute) for permission to use the chromosome 1 sequence, which was generated as part of the *T. cruzi* Genome Project. This investigation was funded by the Wellcome Trust and the UNDP/World Bank/WHO Special Programme for Research and Training in Tropical Diseases (TDR).

References

Agüero, F., Verdun, R.E., Frasch, A.C., and Sanchez, D.O. 2000. A random sequencing approach for the analysis of the *Trypanosoma*

- cruzi* genome: General structure, large gene and repetitive DNA families, and gene discovery. *Genome Res.* **10**: 1996–2005.
- Andersson, B., Aslund, L., Tammi, M., Tran, A.N., Hoheisel, J.D., and Pettersson, U. 1998. Complete sequence of a 93.4-kb contig from chromosome 3 of *Trypanosoma cruzi* containing a strand-switch region. *Genome Res.* **8**: 809–816.
- Bowman, S., Lawson, D., Basham, D., Brown, D., Chillingworth, T., Churcher, C.M., Craig, A., Davies, R.M., Devlin, K., Feltwell, T., et al. 1999. The complete nucleotide sequence of chromosome 3 of *Plasmodium falciparum*. *Nature* **400**: 532–538.
- Bringaud, F., Garcia-Perez, J.L., Heras, S.R., Ghedin, E., El-Sayed, N.M., Andersson, B., Baltz, T., and Lopez, M.C. 2002. Identification of non-autonomous non-LTR-retrotransposons in the genome of *Trypanosoma cruzi*. *Mol. Biochem. Parasitol.* **124**: 73–78.
- Bromley, E.V., Taylor, M.C., Wilkinson, S.R., and Kelly, J.M. 2004. The amino terminal domain of a novel WD repeat protein from *Trypanosoma cruzi* contains a non-canonical mitochondrial targeting signal. *Int. J. Parasit.* **34**: 63–71.
- Campbell, D.A., Thomas, S., and Sturm, N.R. 2003. Transcription in kinetoplastid protozoa: Why be normal? *Microbes Infect.* **5**: 1231–1240.
- Cano, M.I., Gruber, A., Vazquez, M., Cortes, A., Levin, M.J., Gonzalez, A., Degraeve, W., Rondinelli, E., Zingales, B., Ramirez, J.L., et al. 1995. Molecular karyotype of clone CL Brener chosen for the *Trypanosoma cruzi* genome project. *Mol. Biochem. Parasitol.* **71**: 273–278.
- Cheeseman, I.M., Drubin, D.G., and Barnes, G. 2002. Simple centromere, complex kinetochore: Linking spindle microtubules and centromeric DNA in budding yeast. *J. Cell Biol.* **157**: 199–203.
- Choo, K.H.A. 2000. Centromerization. *Trends Cell Biol.* **10**: 182–188.
- Cleveland, D.W., Mao, Y., and Sullivan, K.F. 2003. Centromeres and kinetochores: From epigenetics to mitotic checkpoint signalling. *Cell* **112**: 407–421.
- DaRocha, W.D., Otsu, K., Teixeira, S.M., and Donelson, J.E. 2004. Tests of cytoplasmic RNA interference (RNAi) and construction of a tetracycline-inducible T7 promoter system in *Trypanosoma cruzi*. *Mol. Biochem. Parasitol.* **133**: 175–186.
- Dewar, H., Tanaka, K., Nasmyth, K., and Tanaka, T.U. 2004. Tension between two kinetochores suffices for their bi-orientation on the mitotic spindle. *Nature* **428**: 32–33.
- Dubessay, P., Ravel, C., Bastien, P., Lignon, M.F., Ullman, B., Pages, M., and Blaineau, C. 2001. Effect of large targeted deletions on the mitotic stability of an extra chromosome mediating drug resistance in *Leishmania*. *Nucleic Acid Res.* **29**: 3231–3240.
- Dubessay, P., Ravel, C., Bastien, P., Stuart, K., Dedet, J.P., Blaineau, C., and Pages, M. 2002. Mitotic stability of a coding DNA sequence-free version of *Leishmania major* chromosome 1 generated by targeted chromosome fragmentation. *Gene* **289**: 151–159.
- Durand-Dubief, M. and Bastien, P. 2003. TbAGO1, an Argonaute protein required for RNA interference, is involved in mitosis and chromosome segregation in *Trypanosoma brucei*. *BMC Biol.* **1**: 2.
- du Sart, D., Cancilla, M.R., Earle, E., Mao, J.L., Saffery, R., Tainton, K.M., Kalitsis, P., Martyn, J., Barry, A.E., and Choo, K.H. 1997. A functional neocentromere formed through activation of a latent human centromere and consisting of non-α satellite DNA. *Nat. Genet.* **16**: 144–153.
- Farr, C.J., Stevanovic, M., Thomson, E.J., Goodfellow, P.N., and Cooke, H.J. 1992. Telomere-associated chromosome fragmentation: Applications in genome manipulation and analysis. *Nat. Genet.* **2**: 275–282.
- Gaunt, M.W., Yeo, M., Frame, I.A., Stothard, J.R., Carroasco, H.J., Taylor, M.C., Meno, S.S., Veazey, P., Miles, G.A., Acosta, N., et al. 2003. Mechanism of genetic exchange in American trypanosomes. *Nature* **421**: 936–939.
- Ghedini, E., Bringaud, F., Peterson, J., Myler, P., Berriman, M., Ivens, A., Andersson, B., Bontempi, E., Eisea, J., Angiuoli, S., et al. 2004. Gene synteny and evolution of genomic architecture in trypanosomatids. *Mol. Biochem. Parasitol.* **134**: 183–191.
- Gibson, W.C. and Miles, M.A. 1986. The karyotype and ploidy of *Trypanosoma cruzi*. *EMBO J.* **5**: 1299–1305.
- Gilbert, D.M. 2001. Making sense of eukaryotic DNA replication origins. *Science* **294**: 96–100.
- Grewal, S.I. and Moazed, D. 2003. Heterochromatin and epigenetic control of gene expression. *Science* **301**: 798–802.
- Gueiros-Filho, F.J. and Beverley, S.M. 1996. Selection against the dihydrofolate reductase-thymidylate synthase (DHFR-TS) locus as a probe of genetic alterations in *Leishmania major*. *Mol. Cell Biol.* **16**: 5655–5663.
- Hall, I.M.K., Noma, K., and Grewal, S.I. 2003a. RNA interference machinery regulates chromosome dynamics during mitosis and meiosis in fission yeast. *Proc. Natl. Acad. Sci.* **100**: 193–198.

- Hall, N., Berriman, M., Lennard, N.J., Harris, B.R., Hertz-Fowler, C., Bart-Delabesse, E.N., Gerrard, C.S., Atkin, R.J., Barron, A.J., Bowman, S., et al. 2003b. The DNA sequence of chromosome I of an African trypanosome: Gene content, chromosome organization, recombination and polymorphism. *Nucleic Acid Res.* **31**: 4864–4873.
- Henikoff, S. and Malik, H.S. 2002. Centromeres: Selfish drivers. *Nature* **417**: 227.
- Henikoff, S., Ahmad, K., and Malik, H.S. 2001. The centromere paradox: Stable inheritance with rapidly evolving DNA. *Science* **293**: 1098–1102.
- Henriksson, J., Aslund, L., and Pettersson, U. 1996. Karyotype variability in *Trypanosoma cruzi*. *Parasitol. Today* **12**: 108–114.
- Horn, D., Spence, C., and Ingram, A.K. 2000. Telomere maintenance and length regulation in *Trypanosoma brucei*. *EMBO J.* **19**: 2332–2339.
- Huang, Y. 2002. Transcriptional silencing in *Saccharomyces cerevisiae* and *Schizosaccharomyces pombe*. *Nucleic Acid Res.* **30**: 1465–1482.
- Itzhaki, J.E., Barnett, M.A., MacCarthy, A.B., Buckle, V.J., Brown, W.R., and Porter, A.C. 1992. Targeted breakage of a human chromosome mediated by cloned human telomeric DNA. *Nat. Genet.* **2**: 283–287.
- Kelly, J.M., Ward, H.W., Miles, M.A., and Kendall, G. 1992. A shuttle vector which facilitates the expression of transfected genes in *Trypanosoma cruzi* and *Leishmania*. *Nucleic Acid Res.* **20**: 3963–3969.
- Kendall, G., Wilderspin, A.F., Ashall, F., Miles, M.A., and Kelly, J.M. 1990. *Trypanosoma cruzi* glycosomal glyceraldehyde-3-phosphate dehydrogenase does not conform to the “hotspot” topogenic signal model. *EMBO J.* **9**: 2751–2758.
- Lanzer, M., Fischer, K., and Le Blancq, S.M. 1995. Parasitism and chromosome dynamics in protozoan parasites: Is there a connection? *Mol. Biochem. Parasitol.* **70**: 1–8.
- Machado, C.A. and Ayala, F.J. 2001. Nucleotide sequences provide evidence of genetic exchange among distantly related lineages of *Trypanosoma cruzi*. *Proc. Natl. Acad. Sci.* **98**: 7396–7401.
- Martinez-Calvillo, S., Lopez, I., and Hernandez, R. 1997. pRIBOTEX expression vector: A pTEX derivative for rapid selection of *Trypanosoma cruzi* transfectants. *Gene* **199**: 71–76.
- McDaniel, J.P. and Dvorak, J.A. 1993. Identification, isolation, and characterization of naturally-occurring *Trypanosoma cruzi* variants. *Mol. Biochem. Parasitol.* **57**: 213–222.
- Myler, P.J. 1993. Molecular variation in trypanosomes. *Acta Trop.* **53**: 205–225.
- Nagaki, K., Cheng, Z., Ouyang, S., Talbert, P.B., Kim, M., Jones, K.M., Henikoff, S., Buell, C.R., and Jiang, J. 2004. Sequencing of a rice centromere uncovers active genes. *Nat. Genet.* **36**: 138–145.
- Pal-Bhadra, M., Leibovitch, B.A., Gandhi, S.G., Rao, M., Bhadra, U., Birchler, J.A., and Elgin, S.C. 2004. Heterochromatic silencing and HP1 localization in *Drosophila* are dependent on the RNAi machinery. *Science* **303**: 669–672.
- Requena, J.M., Lopez, M.C., and Alonso, C. 1996. Genomic repetitive DNA elements in *Trypanosoma cruzi*. *Parasitol. Today* **12**: 297–283.
- Santos, M.R., Cano, M.I., Schijman, A., Lorenzi, H., Vazquez, M., Levin, M.J., Ramirez, J.L., Brandao, A., Degraeve, W.M., and da Silveira, J.F. 1997. The *Trypanosoma cruzi* genome project: Nuclear karyotype and gene mapping of clone CL Brener. *Mem. Inst. Oswaldo Cruz.* **92**: 821–828.
- Schueler, M.G., Higgins, A.W., Rudd, M.K., Gustashaw, K., and Willard, H.F. 2001. Genomic and genetic definition of a functional human centromere. *Science* **294**: 109–115.
- Shi, H., Djikeng, A., Tschudi, C., and Ullu, E. 2004. Argonaute protein in the early divergent eukaryote *Trypanosoma brucei*: Control of small interfering RNA accumulation and retroposon transcript abundance. *Mol. Cell Biol.* **24**: 420–427.
- Sijen, T. and Plasterk, R.H. 2003. Transposon silencing in the *Caenorhabditis elegans* germ line by natural RNAi. *Nature* **426**: 310–314.
- Sun, X., Wahlstrom, J., and Karpen, G. 1997. Molecular structure of a functional *Drosophila* centromere. *Cell* **91**: 1007–1019.
- Tamar, S. and Papadopoulou, B. 2001. A telomere-mediated chromosome fragmentation approach to assess mitotic stability and ploidy alterations of *Leishmania* chromosomes. *J. Biol. Chem.* **276**: 11662–11673.
- Temperton, N.J., Wilkinson, S.R., and Kelly, J.M. 1996. Cloning of an Fe-superoxide dismutase gene homologue from *Trypanosoma cruzi*. *Mol. Biochem. Parasitol.* **76**: 339–343.
- Vazquez, M., Ben-Dov, C., Lorenzi, H., Moore, T., Schijman, A., and Levin, M.J. 2000. The short interspersed repetitive element of *Trypanosoma cruzi*, SIRE, is part of VIPER, an unusual retroelement related to long terminal repeat retrotransposons. *Proc. Natl. Acad. Sci.* **97**: 2128–2133.
- Volpe, T.A., Kidner, C., Hall, I.M., Teng, G., Grewal, S.I., and Martienssen, R.A. 2002. Regulation of heterochromatic silencing and histone H3 lysine-9 methylation by RNAi. *Science* **297**: 1833–1837.
- Wickstead, B., Ersfeld, K., and Gull, K. 2004. Small chromosomes of *Trypanosoma brucei* involved in antigenic variation are constructed around repetitive palindromes. *Genome Res.* **14**: 1014–1024.
- Wilkinson, S.R., Temperton, N.J., Mondragon, A., and Kelly, J.M. 2000. Distinct mitochondrial and cytosolic enzymes mediate trypanothione-dependent peroxide metabolism in *Trypanosoma cruzi*. *J. Biol. Chem.* **275**: 8220–8225.
- Wilkinson, S.R., Taylor, M.C., Touitha, S., Mauricio, I.L., Meyer, D.J., and Kelly, J.M. 2002. TcGPXII, a glutathione-dependent *Trypanosoma cruzi* peroxidase with substrate specificity restricted to fatty acid and phospholipid hydroperoxides, is localised to the endoplasmic reticulum. *Biochem. J.* **364**: 787–794.
- Williams, B.C., Murphy, T.D., Goldberg, M.L., and Karpen, G.H. 1998. Neocentromere activity of structurally acentric mini-chromosomes in *Drosophila*. *Nat. Genet.* **18**: 30–37.
- World Health Organization. 2002. *Control of Chagas disease*. World Health Organization Technical Report Series 905, Geneva, Switzerland.
- Zilberman, D., Cao, X., and Jacobsen, S.E. 2003. ARGONAUTE4 control of locus-specific siRNA accumulation and DNA and histone methylation. *Science* **299**: 716–719.

Received June 16, 2004; accepted in revised form October 21, 2004.