



Analysis of mRNA With Microsomal Fractionation Using a SAGE-Based DNA Microarray System Facilitates Identification of the Genes Encoding Secretory Proteins

Nobuaki Toyoda , Shigenori Nagai, Yuya Terashima, et al.

Genome Res. 2003 13: 1728-1736

Access the most recent version at doi:[10.1101/gr.709603](https://doi.org/10.1101/gr.709603)

References

This article cites 11 articles, 5 of which can be accessed free at:
<http://genome.cshlp.org/content/13/7/1728.full.html#ref-list-1>

License

Email Alerting Service

Receive free email alerts when new articles cite this article - sign up in the box at the top right corner of the article or [click here](#).

A horizontal banner advertisement with a teal background. On the left, the text "CRISPR and RNAi Genetic Screening. Your new superpower." is written in white. In the center, there is a white-bordered box containing the words "LEARN MORE" in black. On the right, there is a photograph of a woman wearing a red mask and a white cape, and the Cellecta logo, which consists of a green molecular structure and the word "CELLECTA" in white.

To subscribe to *Genome Research* go to:
<https://genome.cshlp.org/subscriptions>

Cold Spring Harbor Laboratory Press

Methods

Analysis of mRNA With Microsomal Fractionation Using a SAGE-Based DNA Microarray System Facilitates Identification of the Genes Encoding Secretory Proteins

Nobuaki Toyoda,^{1,2} Shigenori Nagai,¹ Yuya Terashima,¹ Kazushi Motomura,¹ Makoto Haino,¹ Shin-ichi Hashimoto,¹ Hajime Takizawa,² and Kouji Matsushima^{1,3}

¹Department of Molecular Preventive Medicine & SORST, School of Medicine, The University of Tokyo, Bunkyo-ku, Tokyo 113-0033, Japan; ²Department of Respiratory Medicine, School of Medicine, The University of Tokyo, Bunkyo-ku, Tokyo 113-8655, Japan

In the regulation of host defense responses such as inflammation and immunity, the secretory proteins, including membrane proteins, play central roles. Although many secretory proteins have been identified by using methods such as differential display, random screening, or the signal sequence trap method, each method suffers from poor reproducibility, low sensitivity, or time-consuming or laborious work. Therefore, the strategy for facilitating the selection of the genes encoding the secretory proteins is desired. In this paper, we describe a system for isolating the genes encoding secretory proteins by analyzing mRNAs with microsomal fractionation on serial analysis of gene expression (SAGE)-based DNA microarray system. This system succeeded in discriminating the genes encoding secretory proteins from ones encoding nonsecretory proteins with 80% accuracy. We applied this system to human T lymphocytes. As a result, we were able to identify the genes that are not only encoding secretory proteins but also expressing selectively in a specific subset of T lymphocytes. The SAGE-based DNA microarray system is a promising system to identify the genes encoding specific secretory proteins.

Most of the secretory proteins—such as receptors, transporters, adhesion molecules, hormones, cytokines, and chemokines—play central roles in homeostatic and host defensive responses; therefore, identification of novel secretory proteins may lead to further clarification of molecular mechanisms of life phenomena and establishment of new therapies for human diseases. Many secretory proteins have been identified by using differential display (Liang and Pardee 1992), random screening, and the signal sequence trap method (Tashiro et al. 1993). However, those methods appeared unlikely to be suitable for the comprehensive identification of the genes encoding secretory proteins for which expression is dynamically regulated in response to particular external stimuli. This is because differential display suffers from poor reproducibility, random screening suffers from time-consuming and laborious work, and the signal sequence trap method suffers from low sensitivity.

The comprehensive search for expressed genes by serial analysis of gene expression (SAGE) reveals not only known but also novel transcripts present within RNA population studied (Velculescu et al. 1995). However, it is generally difficult to predict whether the gene encodes secretory or nonsecretory protein from the SAGE tag. We solved this obstacle by analyzing mRNA with subcellular fractionation by using DNA microarray (Diehn et al. 2000). Consequently, we were

able to develop a SAGE-based DNA microarray system that is efficient in identifying the genes encoding novel secretory proteins (Fig 1).

In our previous paper, we constructed the expression profile of human activated Th1 lymphocytes and that of human activated Th2 lymphocytes by using SAGE technology (Nagai et al. 2000). In addition, we performed SAGE on human resting CD4⁺ T lymphocytes. We show here that the genes encoding secretory proteins in a specific subset of human T lymphocytes are identified efficiently by using the SAGE-based DNA microarray system.

RESULTS

Screening of the Genes Expressed Selectively in Specific Subsets of T Lymphocytes

In activated Th1-, activated Th2-, and resting CD4⁺ T lymphocyte SAGE libraries, a total of 32,219, 32,291, and 62,459 tags, respectively, were sequenced. To identify individual genes, the expressed genes were analyzed with the National Center for Biotechnology Information (NCBI) SAGE database (<http://www.ncbi.nlm.nih.gov/SAGE/>). Those SAGE results permitted selecting the genes satisfying the following criteria: (1) the genes encode hypothetical proteins or ESTs on 2002.1; (2) the genes encode proteins expressed selectively in either activated Th1 or Th2 lymphocytes, or selectively induced by activated T lymphocytes; and (3) the genes correspond with the products amplified by 3' RACE. The genes satisfying these criteria are listed in Table 1. Ten genes were selected from

³Corresponding author.

E-MAIL koujim@m.u-tokyo.ac.jp; FAX 81-3-5684-2297.

Article and publication are at <http://www.genome.org/cgi/doi/10.1101/gr.709603>. Article published online before print in June 2003.

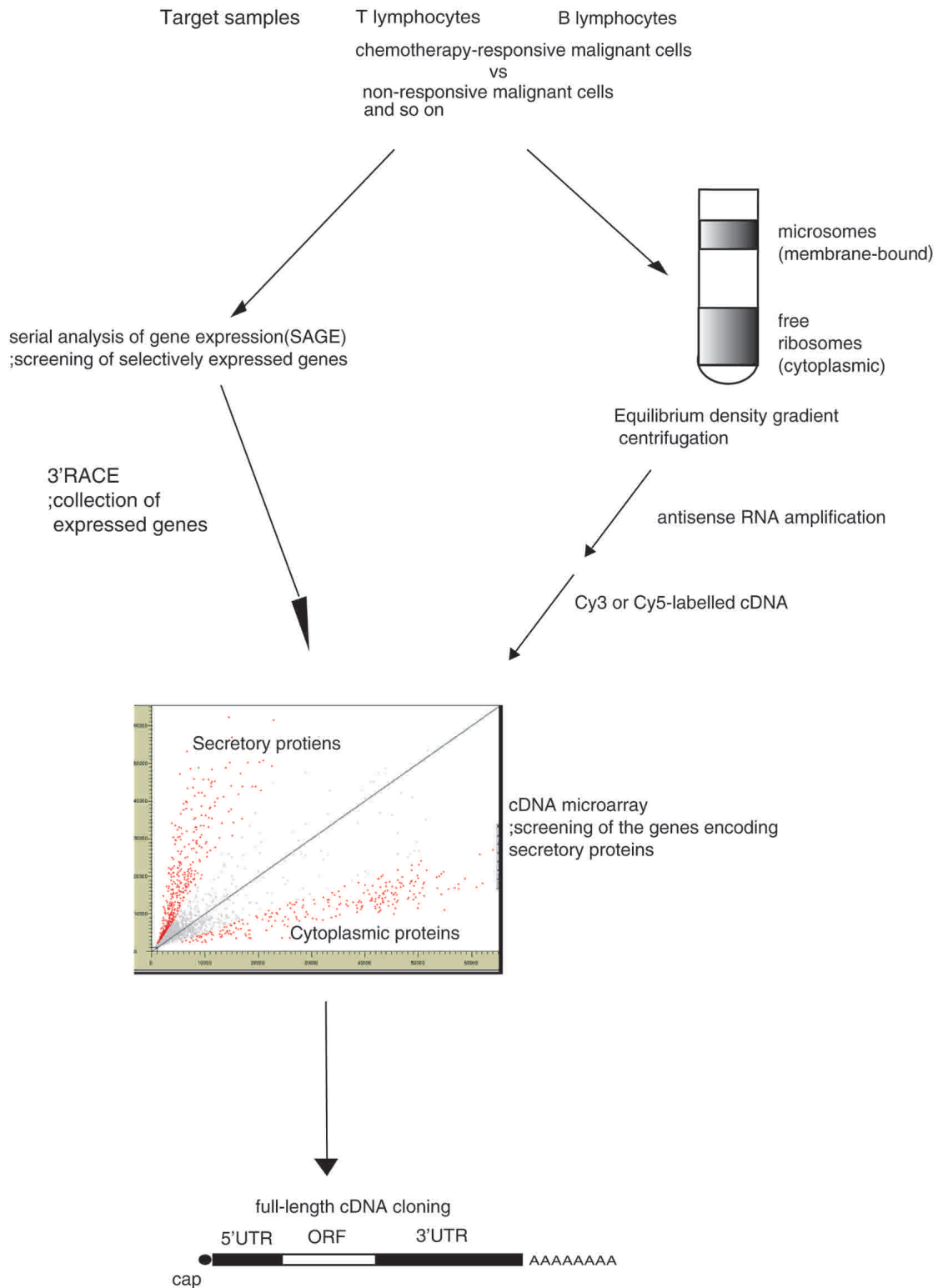


Figure 1 The strategy for identifying the genes encoding secretory proteins for which expression is dependent on the cell types or the cell states. In the present study, our strategy was applied to human T lymphocytes. First, SAGE was performed to reveal genes selectively expressed under specific T lymphocyte conditions such as activated Th1, activated Th2, or activated T lymphocytes. Second, the specific genes were collected by using 3' RACE. Finally, by using a DNA microarray system, the genes encoding secretory proteins were identified by analyzing RNAs from the free ribosomal and the microsomal fraction after equilibrium density-gradient centrifugation.

Table 1. Selectively Expressed Genes With Uncharacterized Subcellular Localization From the SAGE Results

Fold	Tag sequence	Count		3'RACE product	UniGene ID
Transcripts on the microarray selectively expressed in activated Th1-polarized lymphocytes					
Th1/Th2		Th1	Th2		
10.0	CAGGTGCTGT	10	1	hypothetical protein	Hs.92374
9.0	GAATTCCTCG	9	0	hypothetical protein	Hs.301732
6.0	TCTGCAATGA	6	0	hypothetical protein	Hs.8170
4.0	AATCCCGCAA	4	0	hypothetical protein	Hs.268561
4.0	AGTTTGGGCT	4	0	hypothetical protein	Hs.9911
4.0	CCTTTGAACA	4	0	multiple match	Hs.321130
4.0	GCCTCTGTC	4	0	chromosome 16 ORF 5	Hs.7765
4.0	GTTTTCCGGT	4	0	CGI-94 protein	Hs.111449
4.0	GTGTAAATGG	4	0	CGI-101 protein	Hs.286131
4.0	CTGCCATAAC	4	0	CGI-97 protein	Hs.110445
Transcripts on the microarray selectively expressed in activated Th2-polarized lymphocytes					
Th2/Th1		Th1	Th2		
5.0	GCCACACCCC	0	5	hypothetical protein	Hs.7718
Transcripts on the microarray increased in activated T lymphocytes					
Activated T/resting T		activated T	resting T		
95	GGCTGGTCTG	95	0	hypothetical protein	Hs.337986
34	TACTGGTGGG	34	0	hypothetical protein	Hs.136912
9	GAATTCCTCG	9	0	hypothetical protein	Hs.301732
9	CTTGTAAGT	9	0	hypothetical protein	Hs.57209
9	GCCTCACTGC	9	0	clone IMAGE:3881549, mRNA	Hs.346735
8	CTGATGGCAG	8	0	hypothetical protein	Hs.334787
8	TTCTTGTTTG	8	0	<i>Homo sapiens</i> cDNA	Hs.250824
7	GCTACAGGTA	7	0	<i>Homo sapiens</i> cDNA	Hs.349306
7	ACTGTCCCCC	7	0	EST	Hs.50471
7	ATAATACTAA	7	0	EST	Hs.130058
7	TGATTATTGT	7	0	EST	Hs.182285
7	TCAGAGAATA	7	0	hypothetical protein	Hs.99486
6	GACAGATGGA	6	0	KIAA1533 protein	Hs.83575
6	TGGGCCCGTG	6	0	clone MGC:16395 IMAGE:3939387, mRNA	Hs.11607
6	GCCAGGGGCC	6	0	KIAA1273 protein	Hs.23413
5	TAAGTTCCTT	5	0	hypothetical protein	Hs.237971
5	GAATTAAGCG	5	0	EST	Hs.245798
5	GCAGCCCGCG	5	0	hypothetical protein	Hs.71472
5	GGGGCAGCCC	5	0	hypothetical protein	Hs.65234
5	GACAAGCCCA	5	0	hypothetical protein	Hs.180040

The microarray includes the listed genes. Expression of each gene was confirmed by 3'RACE. 3'RACE products corresponded with the most probable GenBank matches.

The tag sequence represents the 10-bp SAGE tag. Count indicates the number of times the tag was identified. Each tag number was normalized by using SAGE software by calculating 32,000.

Fold change in expression was calculated as follows. After normalization of the number of each tag, the relative expression of each transcript was determined by dividing the number of tags observed in activated Th1, activated Th2, or resting T lymphocytes as indicated. To avoid division by zero, we used a tag value of one for any tag that was not detectable.

activated Th1 lymphocytes, one gene from activated Th2 lymphocytes, and 20 genes from activated T lymphocytes.

Isolation of Membrane-Bound Polysomes From Activated T Lymphocytes

We performed equilibrium density-gradient centrifugation to separate microsomes and free ribosomes from the peripheral blood mononuclear cells (PBMCs) stimulated with phorbol myristate acetate (PMA) and ionomycin (Mechler and Rabbitts 1981; Mueckler and Pitot 1981; Mechler 1987). The separation into the free and membrane-bound polysomes from the PBMCs was confirmed by reverse transcription-polymerase chain reaction (RT-PCR; Fig. 2A). We arbitrarily selected GATA3 and G3PDH for cytoplasmic proteins; CD48, CXCR4, and CCR7 for cell surface molecules; and IFN γ and MIP1 β for secreted proteins. Figure 2A shows that cytoplasmic genes such as GATA3 and G3PDH are rich in the free ribosome fraction, and secreted and membrane-associated genes such as

IFN γ , MIP1 β , CD48, CXCR4, and CCR7 are rich in the microsome fraction.

Identification of the Genes Encoding Secretory Proteins

Fluorescently labeled cDNA was synthesized from each fraction (Cy5-labeled cDNA for membrane-associated mRNA, and Cy3-labeled cDNA for cytosolic mRNA). The Cy3- and Cy5-labeled cDNAs were simultaneously hybridized to the genes on the microarray glass slide. Figure 2B shows the distribution of Cy5/Cy3 fluorescent intensity ratio of 379 genes for which subcellular localization has been established. The ratio of the fluorescent intensity of the genes encoding proteins of known subcellular localization is used as internal control. Eighty percent of genes encoding cytoplasmic proteins are <1.35 in Cy5/Cy3 ratio; on the other hand, 80% of genes encoding secretory proteins >1.37 in Cy5/Cy3 ratio.

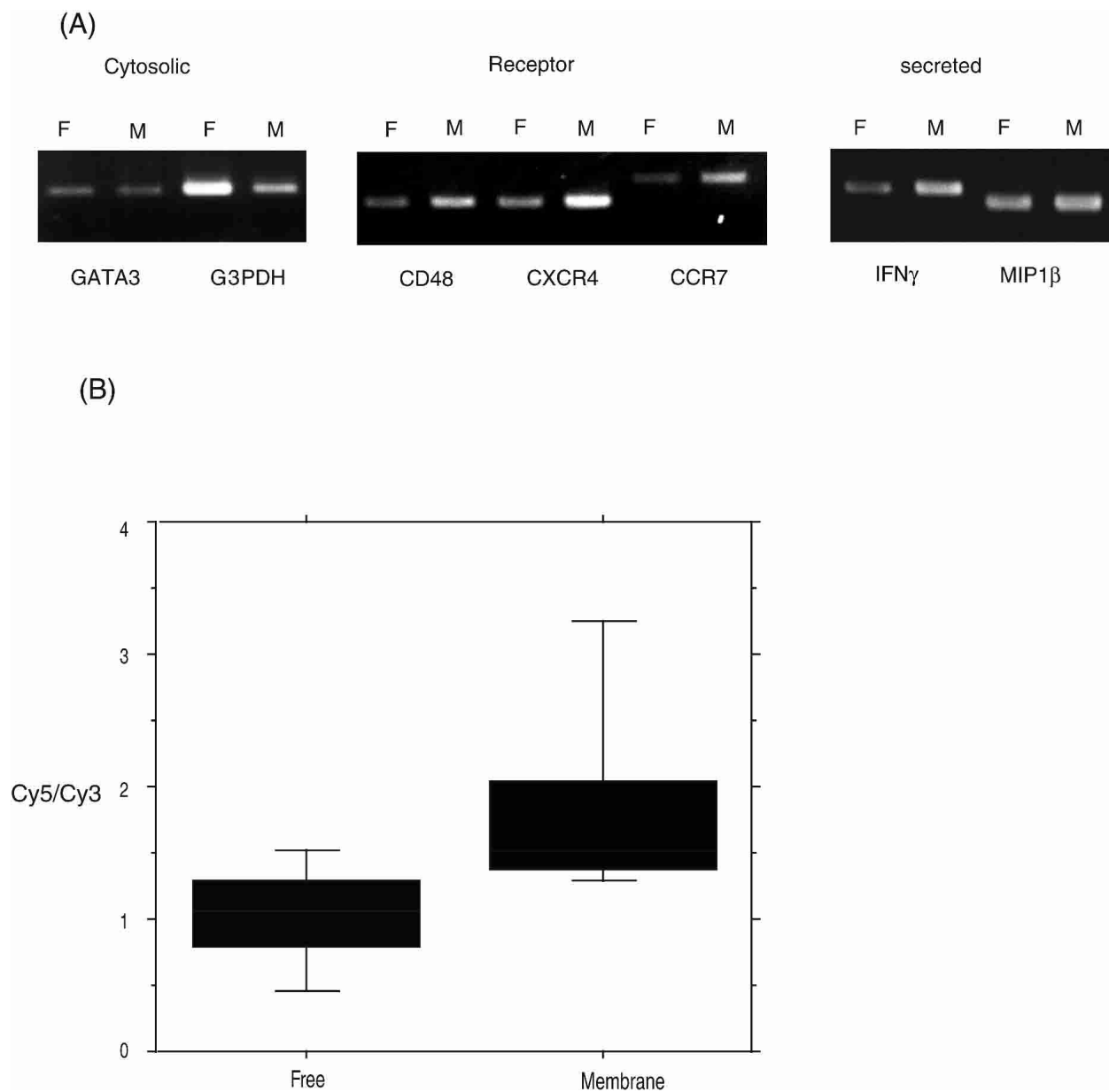


Figure 2 Distribution analysis of RNA encoding proteins with characterized subcellular localization. (A) RT-PCR was performed on total RNA isolated from the free ribosomal and the microsomal fraction. GATA3 and G3PDH were selected for cytoplasmic proteins; CD48, CXCR4, and CCR7 for receptors; and IFN γ and MIP1 β for secreted proteins. F and M indicate the free ribosomal and the microsomal fraction, respectively. (B) Microarray analysis gave a Cy5/Cy3 ratio to each gene. The free column shows the box plot of Cy5/Cy3 ratios of 150 genes encoding cytoplasmic proteins; the membrane column shows the box plot of Cy5/Cy3 ratios of 229 genes encoding secretory proteins. Each box includes 60% of genes encoding the cytoplasmic or secretory proteins.

Selection of the Novel Genes Encoding Secreted and Membrane-Associated Molecules

Among the genes in Table 1, nine genes had a Cy5/Cy3 ratio >1.35, suggesting that these genes encode secretory proteins (six cDNAs encoding hypothetical proteins and 3' ESTs). Two genes are expressed selectively on activated Th1 lymphocytes, one gene on activated Th2 lymphocytes, and six genes on activated T lymphocytes. By using the algorithms such as SOSUI (<http://sosui.proteome.bio.tuat.ac.jp>) and PSORTII (<http://psort.nibb.ac.jp/form2.html>), their subcellular local-

ization was predicted (Fig. 3). The hypothetical protein encoded by *Hs.286131* gene, of which expression is selective in activated Th1 lymphocytes, has four transmembrane domains. Although the product of *Hs.7718* gene selectively expressed in activated Th2 lymphocytes has no transmembrane domain in accordance with the algorithms, the ratio of its fluorescent intensity (Cy5/Cy3 = 1.73) was sufficiently high to be a secretory protein. This discrepancy was due to the incomplete information of the sequence of *Hs.7718* cDNA in the public database. Although it is reported in the public database that the product of *Hs.7718* gene comprised of 522

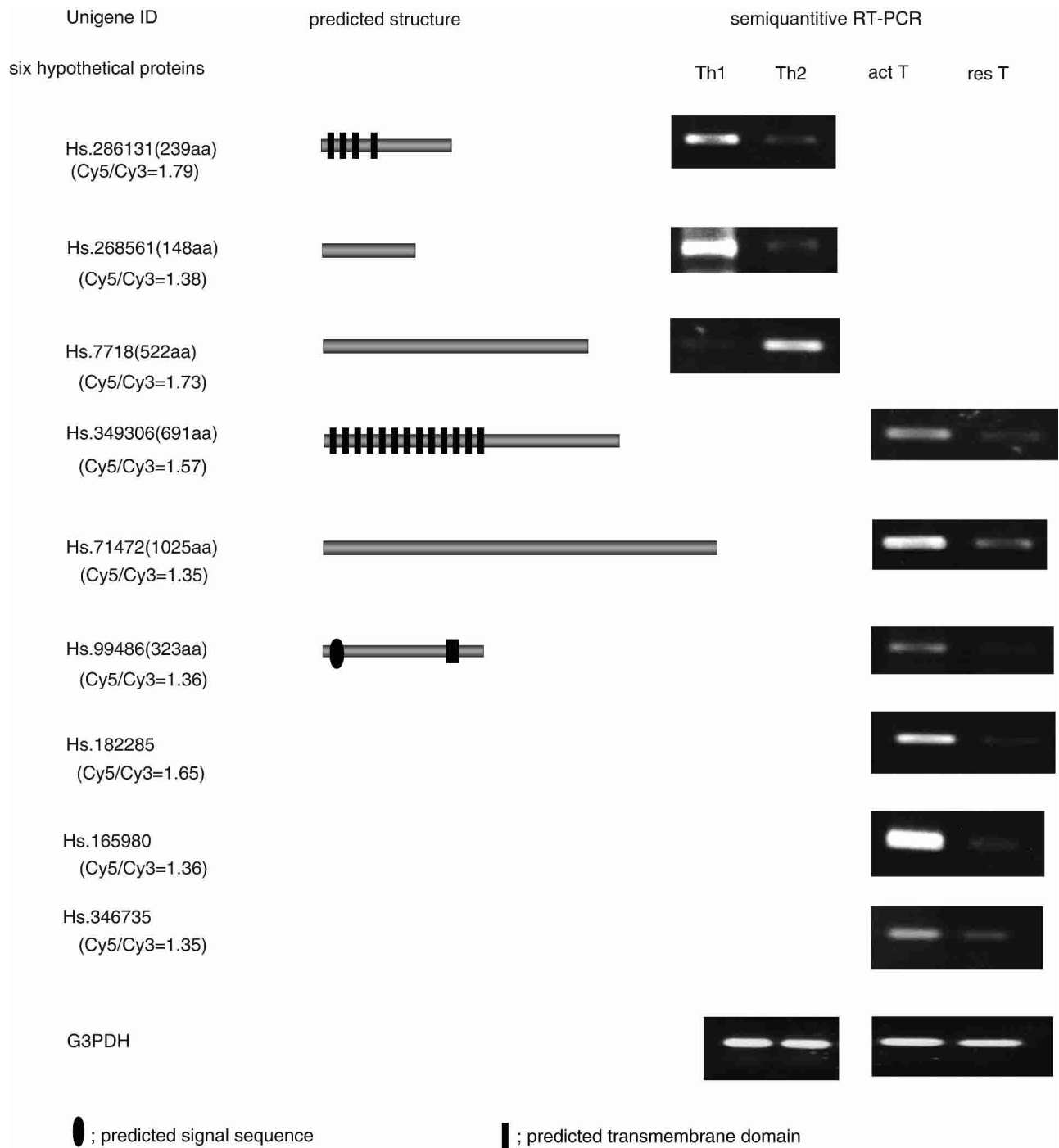


Figure 3 Predicted structures of six hypothetical proteins and RT-PCR analysis of their expression level. By using an algorithm such as SOSUI and PSORTII, transmembrane domains of the six hypothetical proteins were predicted on the basis of the presumed human ortholog. Sequences were obtained from the public database. In the column predicted structure, the black oval represents putative signal sequence; the black boxes, putative transmembrane domains. RT-PCR was performed on total RNA isolated to confirm SAGE results. Th1, Th2, act T, and res T indicate activated Th1 lymphocytes, activated Th2 lymphocytes, activated T lymphocytes, and resting T lymphocytes, respectively. The Cy5/Cy3 fluorescent ratio is a value that is given to each gene by the microarray analysis; candidates of secretory proteins have Cy5/Cy3 fluorescent ratios >1.35.

amino acids, the full-length cDNA of this gene turned out to encode a protein comprising 775 amino acids with a signal sequence at the N-terminal portion (Nielsen et al. 1997). Hs.349306 gene product has 13 predicted transmembrane do-

main, which suggests that this product is a seven-transmembrane receptor selectively induced in activated T lymphocytes. Hs.99486 gene product has a signal sequence and a transmembrane domain.

Full-Length cDNA Cloning of *Hs.182285*

To examine whether secretory proteins can be identified from the limited information of the EST of 3'-site, the full-length cDNA cloning of *Hs.182285* gene was conducted. The result indicated that *Hs.182285* cDNA encodes a novel protein comprising 167 amino acids, which has four predicted transmembrane domains, as shown in Figure 4.

Analysis of In Vitro Translated *Hs.7718* Gene Product

To assess the topology of *Hs.7718* gene product relative to the microsomal vesicle membranes, proteinase K susceptibility studies was performed (Fig. 5A). The in vitro translated *Hs.7718* gene product resolved at ~106 kD on SDS-PAGE, which is 20 kD larger than the size calculated from amino acid sequence (Fig. 5A, the first lane). *Hs.7718* gene product translated in the presence of microsomes showed higher molecular weight even after treatment with proteinase K (Fig. 5A, the second lane), which is possibly due to N-glycosylation at amino acids 138–141 and amino acids 361–364. Upon disruption of the microsomal membrane, *Hs.7718* gene product was completely degraded (the third lane). Together, these results indicate that *Hs.7718* gene product is a secretory protein.

Hs.182285 Gene Product–Green Fluorescent Protein Distributed Through the Plasma Membrane

To directly visualize the intracellular distribution of *Hs.182285* gene product, we expressed chimera consisting of *Hs.182285* gene product fused to green fluorescent protein (GFP) in cultured HEK293 cells and examined the GFP fluorescence by laser-scanning confocal microscopy. The *Hs.182285*-GFP fused at the C terminus was dispersed throughout the plasma membrane (Fig. 5B). There is no difference in distribution between *Hs.182285* gene product with GFP at the N terminus and at the C terminus. In addition, *Hs.182285*-GFP fusion protein mostly merged with membrane marker DilC12 (Fig. 5B). These results indicate that *Hs.182285* gene product is indeed located at the plasma membrane.

DISCUSSION

Intercellular communication between secreted proteins and membrane receptors plays a central role in most fundamental biological processes. In addition, secretory proteins are the most probable therapeutic agents, or targets, for antagonistic or agonistic therapy. Therefore, the development of efficient systems for identifying the genes encoding secretory proteins has been desired.

So far, several strategies for identifying secretory proteins have been developed. One is the signal sequence trap method that takes advantage of a characteristic N-terminal signal peptide sequence. However, this strategy has difficulty in identifying novel specific secretory protein genes, because unequal representation of different messages makes the identification of weakly expressed genes difficult and because comparisons

among the expression profiles of multiple samples cannot be performed. Another is a genome-wide screening method using DNA microarray (Diehn et al. 2000); DNA microarray analysis of mRNAs with subcellular fractionation reveals candidate genes encoding secretory proteins. This strategy cannot be applied to identify the genes encoding secretory proteins that are expressed in response to particular external stimuli because of the following reasons. One is that DNA microarray analysis is limited by the ability to analyze only previously isolated genes. Furthermore, it is usually difficult for laboratories to collect, verify, and manage thousands of genes for DNA microarray analysis, and many genes represented on the microarrays cannot be assessed because they are not expressed at a sufficient level. Another reason is that it is difficult to prepare sufficient materials in specific conditions such as Th1-polarized lymphocytes or Th2-polarized lymphocytes for the purpose of discriminating secretory proteins from nonsecretory proteins by equilibrium sediment–density centrifugation. Our strategy could be applied to identify the genes expressed in a limited amount of samples.

The striking feature of our system is the ability to isolate not only the genes that are encoding secretory proteins but also dynamically regulated proteins in response to particular external stimuli. In addition, our system can identify novel genes without interference of highly expressed genes. This is the fundamental limitation in identifying novel specific secretory protein genes. We have overcome this problem by analysis of mRNA with subcellular fractionation by using the SAGE-based DNA microarray system. In this study, we found that the SAGE-based DNA microarray system is very efficient in identifying the cDNAs encoding novel secretory proteins with selective expression in a specific subset of T lymphocytes, although the gene expression in human Th1 lymphocytes, human Th2 lymphocytes, and activated human T lymphocytes has been intensively analyzed. Our system is efficient in discovering new secretory proteins, but it is impossible to detect all secretory proteins. The reason is that some proteins translocate across the endoplasmic reticulum (ER) membrane by posttranslational modification (Deshaies et al. 1991; Panzner et al. 1995), and that some mitochondrial membrane proteins are synthesized on free polysomes, released into cytosol, and transported across the organelle membrane by a posttranslational mechanism.

We have succeeded in cloning the full-length cDNA of a novel gene (cluster ID, *Hs.182285*) for which the product can be a transmembrane protein induced in activated T lymphocytes. This molecule indeed exists at the plasma membrane (Fig. 5B), and has four predicted transmembrane domains and one WW domain (amino acids 8–34, also known as *rsp5* or *WWP*) in accordance with PROSITE (<http://www.expasy.ch/prosite/>). The WW domain is one of the smallest, yet most versatile, protein–protein interaction modules. The ability of this simple domain to interact with a number of proline-containing ligands (Chen and Sudol 1995), which somewhat resembles SH3 (Src homology 3) domains, has resulted in a great deal of functional diversity. Although it is difficult to speculate the function of this molecule, this molecule may directly activate or stabilize T lymphocytes, because WW domains can be found in many signal transduction molecules.

In conclusion, the SAGE-based DNA microarray system described here facilitates identification of the genes encoding novel secretory proteins for which expression is regulated during biological processes in any type of cells or tissues. Because subcellular fractionation by equilibrium density–gradient

```
MLLLIFWIAPAHGPTNIMVYISICSLLSFTVPSTKGIGLAAQ
DILHNNPSSQRALCLCLVLLAVLGCSTIIVOFRYNKALECFD
SSVEGAIYYVVFITLVLASAIJFREWSNVG
LVDFLGMACGFTTSVGVIVLIQVFKEFNFNLGEMNKSNMKSNMKTDXTH
```

Figure 4 Amino acid sequence of *Hs.182285* gene product. 5' RACE analysis reveals the predicted structure of *Hs.182285* gene product. *Hs.182285* gene product comprises 167 amino acids. The four predicted transmembrane domains are shown by the underlines.

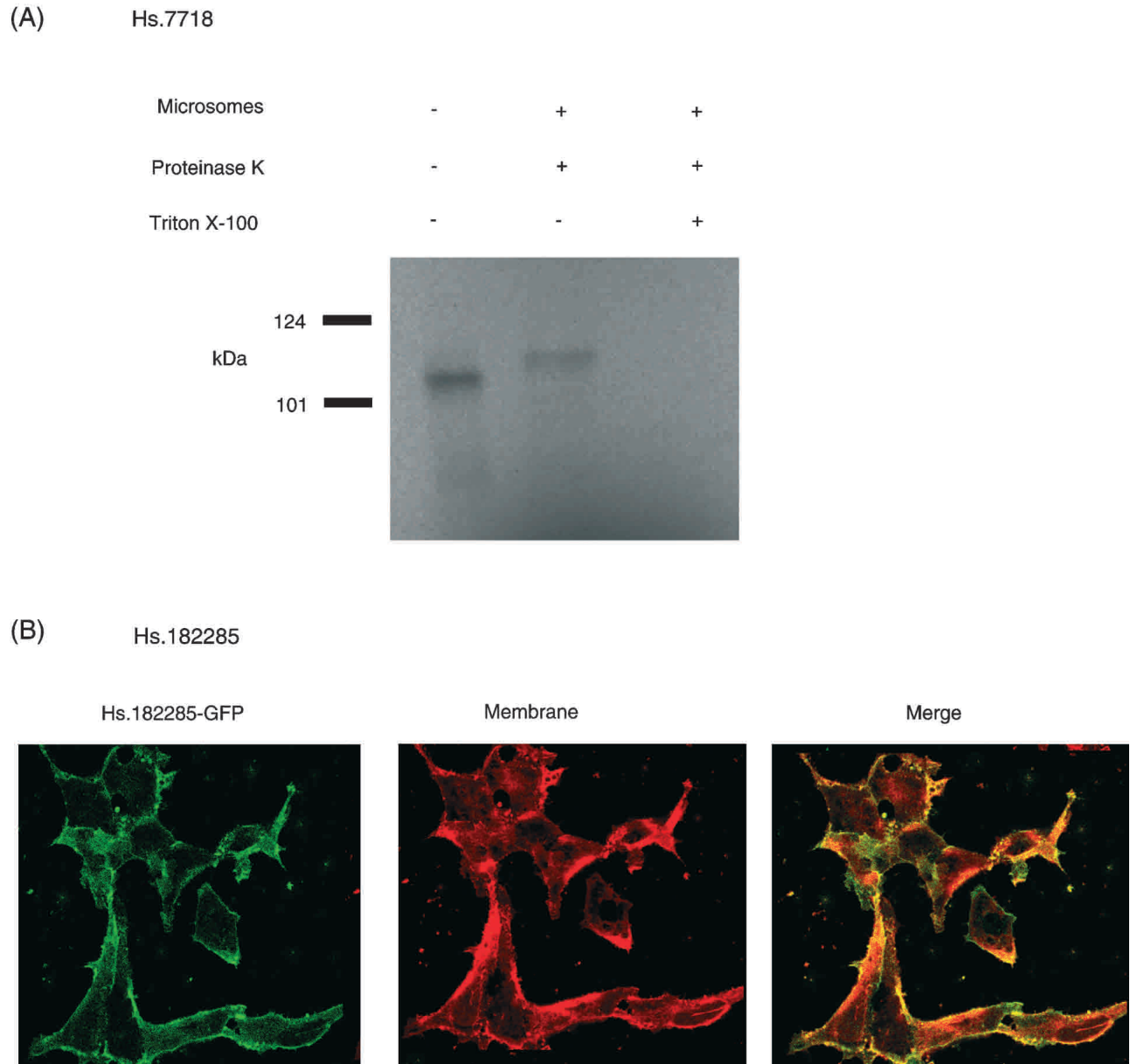


Figure 5 (A) Autoradiogram demonstrating the susceptibility of Hs.7718 gene product to proteinase K when translated in vitro in the presence of microsomal vesicles (microsomes). Equal aliquots of each translation reaction were exposed to proteinase K in the absence (–) or presence (+) of Triton X-100. (B) HEK293 cells overexpressing green fluorescent protein (GFP)–fused Hs.182285 gene product. HEK293 cells expressing GFP-fused Hs.182285 gene product (*left*) were fixed, and the membrane is labeled with DilC12 (*center*). Images were merged (*right*). When GFP-fused Hs.182285 gene product distribution is compared with the membrane labeling in red performed with DilC12, the GFP fluorescent signal was identical to the plasma membrane.

centrifugation cannot discriminate perfectly secretory proteins from nonsecretory proteins, the microsome fraction could contain mRNAs for cytoplasmic proteins. However, the 3′-EST information revealed by SAGE suffices full-length cDNA cloning, and the subcellular localization of the molecules are predicted with considerable accuracy from the amino acid sequence by using the algorithms such as SOSUI or PSORTII. Application of our system to other cell types and conditions could lead to further identification of the genes encoding novel secretory proteins that remain veiled in the human genome (Velculescu et al. 1999; Sara et al. 2002).

METHODS

SAGE

The SAGE procedure was performed on mRNAs from human activated Th1 lymphocytes, activated Th2 lymphocytes, and resting CD4⁺ T lymphocytes as described (Nagai et al. 2000). Sequenced files were analyzed with the SAGE software, SAGE map (<http://www.ncbi.nlm.nih.gov/SAGE/>), and NCBI's sequence search tool (advanced BLAST search; <http://www.ncbi.nlm.nih.gov/BLAST/>). After elimination of linker sequences and the repeated ditags, a total of 126,969 tags

representing 32,219, 32,291, and 62,459 tags from activated Th1, activated Th2, and resting CD4⁺ T lymphocytes, respectively, were analyzed.

DNA Microarray Manufacture

We used 3' rapid amplification of cDNA ends method (3' RACE) to collect cDNAs for the microarray analysis, using the RACE kit (Clontech) according to the manufacturer's instructions. The 3' RACE products were cloned into the *p*-GEM T easy vector (Promega), and inserts of at least two independent *Escherichia coli* clones were sequenced by using a M13 forward primer. Sequence homology was confirmed by the advanced BLAST search. For the analysis, we used 463 cDNA clones consisting of 150 genes encoding cytoplasmic proteins, 229 genes encoding secretory proteins, 82 genes with uncharacterized subcellular localization, and two negative controls (λ [Takara] and *tobacco chloroplast gene*). Sequences of all genes were verified. PCR products prepared from these clones were spotted onto glass slides by using a robot with four printing tips (Kakengeneq); length of the amplicon ranged from 300–1000 bp. To normalize carrying efficiencies of labeling and detection, a series of housekeeping genes (encoding β -actin, ribosomal protein L32, G3PDH, and thymocin β 10) and negative control genes (λ and *tobacco chloroplast gene*) were spotted in each of the four rectangles of DNA spots. The λ and *tobacco chloroplast gene* that we used as negative controls have no sequence homology to any sequence in the human genome.

Subcellular Fractionation

We used equilibrium density–gradient centrifugation to separate the free ribosomes and the microsomes (Mechler and Rabbitts 1981; Mueckler and Pitot 1981; Mechler 1987). Briefly, PBMCs were cultured in RPMI1640 supplemented with 2 mM l-glutamine, 0.1 mM nonessential amino acids, 1 mM pyruvate, 5×10^{-5} mM 2-mercaptoethanol, and 10 % FCS containing 4 ng/mL of IL-2 (R&D Systems) for 14 d. The cells were expanded from 2×10^7 to 3×10^8 cells. The cultured PBMCs were further stimulated for 4 h with 50 ng/mL of PMA and 1 μ g/mL of ionomycin (Sigma). The 3×10^8 PBMCs were treated with cycloheximide (50 μ M; Sigma) for 10 min at 37°C and lysed hypotonically by using a ball-bearing homogenizer followed by elimination of the nuclei by centrifugating the homogenate at 2000g for 2 min at 4°C. The supernatant containing cytoplasmic extract was diluted with 2.5 M sucrose until the sucrose concentration reached 2.1 M and was layered on 2.5 M sucrose. Two successive layers of sucrose solutions, one with 1.98 M sucrose and the second with 1.3 M sucrose, were then layered over the sample. After the gradients were centrifuged for 15 h at 90,000g and 4 °C, we collected the free ribosomal fraction in load zone and the microsomal fraction between the 1.98 M and 1.3 M sucrose layers.

RNA Isolation and Antisense RNA Amplification

Total RNA was isolated from the membrane and the cytoplasmic fraction by using Trizol (Invitrogen). Poly (A)⁺ RNA was isolated from total RNA by using oligo-dT30 (Roche Diagnostic System) according to the manufacturer's protocol. Poly (A)⁺ RNA fractions recovered were amplified by using a linear T7-based antisense RNA (aRNA)-amplification method. One fifth of resultant aRNA sample was electrophoresed in 1% agarose gel, and the amount of aRNA was quantitatively estimated by ethidium bromide staining. Thus, the amount of aRNA to be used for the labeling procedure was adjusted.

Preparation of Fluorescence-Labeled cDNA and Microarray Hybridization

aRNA from the cytoplasmic fraction was labeled with the fluorescent dye Cy3; aRNA from the membrane fraction was labeled with the fluorescent dye Cy5. The labeled probes were

purified on Microcon 30 columns (Millipore), and 10 μ g of yeast transfer RNA, 4 μ g of poly (dA), and 15 μ g of Cot1 human DNA as blocking reagents were added to probes and concentrated to 12 μ L. Then, 2.55 μ L of 20 \times standard saline citrate (SSC) and 0.45 μ L of 10% sodium dodecyl sulfate (SDS) were added, and a final volume of 15 μ L was used as probe solution for hybridization on each cDNA-spotted slide. The slides were covered with glass coverslips and fixed in a hybridization cassette (TeleChem), and hybridization was performed for 12 h at 65 °C. Glass slides were then washed in 2 \times SSC and 0.03% SDS for 5 min, 1 \times SSC for 5 min, and 0.2 \times SSC for 5 min.

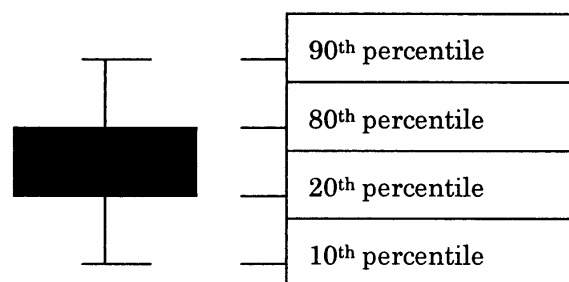
Image Analysis

Fluorescent images of hybridized microarrays were obtained by using a ScanArray 4000 (GSI Lumonics) and analyzed by using ScanAnalyze 2 software (<http://rana.lbl.gov/EisenSoftware.htm>).

Semiquantitative RT-PCR

Each total RNA (200 ng) was treated with DNase (Roche), and RT cDNA, corresponding to 40 ng of total RNA, was amplified by PCR. Reaction mixtures were incubated in a DNA Thermal Cycler (Perkin-Elmer) for 25–30 cycles.

Explanation of Box Plot



In each column, the genes for which Cy5/Cy3 ratios are from the 20th to 80th percentile are included in the box, and the genes for which Cy5/Cy3 ratios are from the 10th to 90th percentile are between the top and bottom bar.

Full-Length cDNA Cloning of *Hs.182285* cDNA

The human thymus marathon-ready cDNA (Clontech) was used to clone the 5' end of *Hs.182285* cDNA by 5' RACE analysis. The first PCR amplification was performed with ccatc ctaatacactcactatagggc (adapter primer 1) and aaaggggtc aattgctctaattgtgc (gene-specific primer 1): 32 cycles for 20 s at 94°C and 3 min at 72°C, five cycles for 20 s at 94°C and 3 min at 70°C, five cycles for 20 s at 94°C and 3 min at 68°C \times 22 cycles. The second (nested) amplification was performed with actcactatagggctcagcggc (adapter primer 2) and tgtcaagacata ccactatagcggc (gene specific primer 2): 27 cycles for 20 s at 94°C and 32 min at 72°C and five cycles for 20 s at 94°C and 3 min at 68°C \times 22 cycles. PCR fragments were analyzed by agarose gel electrophoresis and sequenced.

In Vitro Translation

The protein was synthesized from isolated plasmid *Hs.7718* cDNA by using the TNT in vitro transcription/translation system (Promega) in the absence or the presence of canine pancreatic microsomal membranes (Promega). Synthesized protein was detected by incorporation of [³⁵S] methionine (Amersham) as described by the manufacturer. Proteinase K

treatment of translation reactions was performed at final concentration of 50 $\mu\text{g}/\text{mL}$ for 1 h on ice in the presence or absence of 0.5% Triton X-100, followed by inactivation of the protease with 3 mM phenylmethylsulfonyl fluoride. The reactions were mixed with sample buffer and loaded onto SDS-PAGE (7.5%) gels. Molecular mass standards were obtained from Bio-Rad.

Hs.182285 Gene Product-GFP Construct and Transient Transfections

Hs.182285 gene product-GFP was obtained by PCR amplification of Hs.182285 open reading frame and cloned in the pEGFP-C1 and pEGFP-N2 vector (Clontech). HEK293 cells were grown in Dulbecco's modified Eagle's medium supplemented with 10% fetal bovine serum. pEGFP-C1/N2-Hs.182285 transfection was carried out by using LipofectAMINE Plus (Invitrogen) according to the instruction of the manufacturer.

Confocal-Scanning Laser Microscopy

Transfected cells were cultured on cover glass and fixed in 4% formaldehyde in PBS for 15 min, and the membrane was labeled by DilC12 (Molecular Probe Inc.). The specimens were examined with a laser-scanning confocal microscope (Olympus).

ACKNOWLEDGMENTS

This work was supported by CREST/SORST and Grant-in-Aid for Scientific Research on Priority Areas (C) "Medical Genome Science" from the Ministry of Education, Culture, Sports, Science and Technology of Japan.

The publication costs of this article were defrayed in part by payment of page charges. This article must therefore be hereby marked "advertisement" in accordance with 18 USC section 1734 solely to indicate this fact.

REFERENCES

- Chen, H.I. and Sudol, M. 1995. The WW domain of Yes-associated protein binds a protein-rich ligand that differs from the consensus established for Src homology 3-binding modules. *Proc. Natl. Acad. Sci.* **17**: 7819-7823.
- Deshaies, R.J., Sanders, S.L., Feldheim, D.A., and Schekman, R. 1991. Assembly of yeast Sec proteins involved in translocation into the endoplasmic reticulum into a membrane-bound multisubunit complex. *Nature* **349**: 806-808.
- Diehn, M., Eisen, M.B., Botstein, D., and Brown, P.O. 2000. Large-scale identification of secreted and membrane-associated

- gene products using DNA microarrays. *Nat. Genet.* **25**: 58-62.
- Liang, P. and Pardee, A.B. 1992. Differential display of eukaryotic messenger RNA by means of the polymerase chain reaction. *Science* **257**: 967-971.
- Mechler, B. and Rabbitts, T.H. 1981. Membrane-bound ribosomes of myeloma cells, IV: mRNA complexity of free and membrane-bound polysomes. *J. Cell. Biol.* **88**: 29-36.
- Mechler, B.M. 1987. Isolation of messenger RNA from membrane-bound polysomes. *Methods Enzymol.* **152**: 241-248.
- Mueckler, M.M. and Pitot, H.C. 1981. Structure and function of rat liver polysome populations, I: Complexity, frequency distribution, and degree of uniqueness of free and membrane-bound polysomal polyadenylate-containing RNA populations. *J. Cell. Biol.* **90**: 495-506.
- Nagai, S., Hashimoto, S., Yamashita, T., Toyoda, N., Satoh, T., Suzuki, T., and Matsushima, K. 2000. Comprehensive gene expression profile of human activated Th1- and Th2-polarized cells. *Int. Immunol.* **13**: 367-376.
- Nielsen, H., Engelbrecht, J., Brunak, S., and von Heijne, G. 1997. Identification of prokaryotic and eukaryotic signal peptides and prediction of their cleavage sites. *Protein Eng.* **10**: 1-6.
- Panzner, S., Dreier, L., Hartmann, E., Kostka, S., and Rapoport, T.A. 1995. Posttranslational protein transport in yeast reconstituted with a purified complex of Sec proteins and Kar2p. *Cell* **81**: 561-570.
- Sara, S., Sparks, B.A., Rago, C., Akmaev, V., Wang, J.C., Vogelstein, B., Kinzler, W.K., and Velculescu, V.E. 2002. Using the transcriptome to annotate the genome. *Nature Biotech.* **19**: 508-512.
- Tashiro, K., Tada, H., Heilker, R., Shirozu, M., Nakano, T., and Honjo, T. 1993. Signal sequence trap: A cloning strategy for secreted proteins and type I membrane proteins. *Science* **261**: 600-603.
- Velculescu, V.E., Zhang, L., Vogelstein, B., and Kinzler, K.W. 1995. Serial analysis of gene expression. *Science* **270**: 484-487.
- Velculescu, V.E., Madden, S.L., Zhang, L., Lash, A.E., Yu, J., Rago, C., Lal, A., Wang, C.J., Beaudry, G.A., Ciriello, K.M., et al. 1999. Analysis of human transcriptomes. *Nat. Genet.* **23**: 387-388.

WEB SITE REFERENCES

- <http://www.ncbi.nlm.nih.gov/SAGE/>; National Center for Biotechnology Information SAGE database.
- <http://sosui.proteome.bio.tuat.ac.jp>; SOSUI algorithm.
- <http://psort.nibb.ac.jp/form2.html>; PSORTII algorithm.
- <http://www.expasy.ch/prosite/>; PROSITE.
- <http://www.ncbi.nlm.nih.gov/BLAST/>; advanced BLAST search.
- <http://rana.ibl.gov/EisenSoftware.htm>; ScanAlyze 2 software.

Received August 14, 2002; accepted in revised form April 3, 2003.