



## Shuffling of Genes Within Low-Copy Repeats on 22q11 (LCR22) by *Alu*-Mediated Recombination Events During Evolution

Melanie Babcock, Adam Pavlicek, Elizabeth Spiteri, et al.

*Genome Res.* 2003 13: 2519-2532

Access the most recent version at doi:[10.1101/gr.1549503](https://doi.org/10.1101/gr.1549503)

---

**References** This article cites 45 articles, 14 of which can be accessed free at:  
<http://genome.cshlp.org/content/13/12/2519.full.html#ref-list-1>

### License

**Email Alerting Service** Receive free email alerts when new articles cite this article - sign up in the box at the top right corner of the article or [click here](#).

---

An advertisement banner with a teal background. On the left, the text "CRISPR and RNAi Genetic Screening. Your new superpower." is written in white. In the center, there is a white-bordered box containing the text "LEARN MORE". On the right, there is a photograph of a woman wearing a red and white superhero cape and mask, with the Cellecta logo (a green molecular structure) and the word "CELLECTA" below it.

---

To subscribe to *Genome Research* go to:  
<https://genome.cshlp.org/subscriptions>

---

Cold Spring Harbor Laboratory Press

# Shuffling of Genes Within Low-Copy Repeats on 22q11 (LCR22) by *Alu*-Mediated Recombination Events During Evolution

Melanie Babcock,<sup>1</sup> Adam Pavlicek,<sup>2</sup> Elizabeth Spiteri,<sup>1</sup> Catherine D. Kashork,<sup>3</sup> Ilya Ioshikhes,<sup>4</sup> Lisa G. Shaffer,<sup>3,5</sup> Jerzy Jurka,<sup>2</sup> and Bernice E. Morrow<sup>1,6</sup>

<sup>1</sup>Department of Molecular Genetics, Albert Einstein College of Medicine, Bronx, New York, New York 10461, USA; <sup>2</sup>Genetic Information Research Institute, Mountain View, California 94043, USA; <sup>3</sup>Department of Molecular and Human Genetics, Baylor College of Medicine, Houston, Texas 77030, USA; <sup>4</sup>Department of Biomedical Informatics, Ohio State University, Columbus Ohio 43210, USA

Low-copy repeats, or segmental duplications, are highly dynamic regions in the genome. The low-copy repeats on chromosome 22q11.2 (LCR22) are a complex mosaic of genes and pseudogenes formed by duplication processes; they mediate chromosome rearrangements associated with velo-cardio-facial syndrome/DiGeorge syndrome, der(22) syndrome, and cat-eye syndrome. The ability to trace the substrates and products of recombination events provides a unique opportunity to identify the mechanisms responsible for shaping LCR22s. We examined the genomic sequence of known LCR22 genes and their duplicated derivatives. We found *Alu* (SINE) elements at the breakpoints in the substrates and at the junctions in the truncated products of recombination for *USP18*, *GGT*, and *GGLA*, consistent with *Alu*-mediated unequal crossing-over events. In addition, we were able to trace a likely interchromosomal *Alu*-mediated fusion between *IGSF3* on 1p13.1 and *GGT* on 22q11.2. Breakpoints occurred inside *Alu* elements as well as in the 5' or 3' ends of them. A possible stimulus for the 5' or 3' terminal rearrangements may be the high sequence similarities between different *Alu* elements, combined with a potential recombinogenic role of retrotransposon target-site duplications flanking the *Alu* element, containing potentially kinkable DNA sites. Such sites may represent focal points for recombination. Thus, genome shuffling by *Alu*-mediated rearrangements has contributed to genome architecture during primate evolution.

[Supplemental material is available online at [www.genome.org](http://www.genome.org).]

Segmental duplications, or low-copy repeats (LCRs) of >95% sequence identity, cluster within different chromosome regions and constitute approximately 5% of the human genome (Cheung et al. 2001; Bailey et al. 2002a). Low-copy repeats range in size from 10–250 kb (Stankiewicz and Lupski 2002). They are considered highly dynamic regions in the genome because they mediate meiotic unequal nonallelic homologous recombination events, resulting in altered gene dosage associated with human genomic disorders (Stankiewicz and Lupski 2002). Hemizygous deletions mediated by meiotic homologous recombination events in LCRs occur in several well characterized disorders including Williams-Beuren syndrome at chromosome band 7q11.23 (OMIM 194050), Prader-Willi (OMIM 176270) and Angelman syndromes (OMIM 105830) on chromosome 15q12, hereditary neuropathy with liability to pressure palsies (HNPP; OMIM 162500) on 17p12, and Smith-Magenis syndrome (OMIM 182290) on chromosome 17p11.2. In some cases, the reciprocal product of an interchromosomal recombination event occurs, resulting in a duplication of the interval; these disorders include Charcot-Marie-Tooth disease type 1A (OMIM 118220) on 17p12 and dup(17)(p11.2p11.2) (Potocki et al. 2000). Three different disorders on 22q11.2—velo-cardio-facial syndrome/DiGeorge syndrome (VCFS/DGS; OMIM192430/OMIM188400), der(22)

syndrome (Zackai and Emanuel 1980) and cat-eye syndrome (CES; MIM 115470)—are also associated with rearrangements involving region-specific LCRs (LCR22).

LCR-mediated rearrangements occur sporadically in different populations as de novo events and together have a large impact on human health. Unfortunately, very little is understood about the precise mechanisms by which LCRs mediate chromosome rearrangements, thereby causing disease. It is also not known how the LCRs formed during the evolution of primate species. This is relevant, as it is possible that similar mechanisms are responsible for mediating meiotic rearrangements associated with genomic disorders. With the availability of the complete sequence of the human genome, it is now possible to define the mechanisms responsible for shaping the LCRs during evolution.

In addition to genes and pseudogenes, LCRs, like the rest of the genome, contain highly repetitive elements such as LINES (long interspersed repetitive elements) and SINEs (short interspersed nuclear elements). These elements, particularly SINEs, have been implicated in chromosome rearrangements and disease. *Alu* elements are part of the SINE (short interspersed nuclear elements) family of transposable elements, and they comprise 10% of the human genome (Lander et al. 2001). *Alu* elements are approximately 280 bp in length and consist of two similar monomers that bear similarity to 7SL RNA, which is a major component of the signal recognition particle involved in attaching ribosomes to the endoplasmic reticulum. RNA polymerase III transcribes the *Alu* elements (Duncan et al. 1979). Different *Alu* subfamilies have formed and become mobilized at different times

<sup>5</sup>Present address: Washington State University, Spokane, Health Research and Education Center, Spokane, WA 99210-1495.

<sup>6</sup>Corresponding author.

E-MAIL [morrow@acom.yu.edu](mailto:morrow@acom.yu.edu); FAX (718) 430-8778.

Article and publication are at <http://www.genome.org/cgi/doi/10.1101/gr.1549503>.

in the evolution of primate species (Jurka and Pethiyagoda 1995). The subfamilies (70%–98% homologous) can be identified by examining their sequence content at specific diagnostic nucleotides.

The role of *Alu* SINEs in modulating the architecture of the human genome in association with human disorders and in mediating gene rearrangements is well documented (Batzer and Deininger 2002; Kolomietz et al. 2002). The two most frequent mechanisms for modulating architecture by *Alu* elements are by transposition and unequal homologous recombination. Both mechanisms have been linked to human diseases (see Table 1 in Kolomietz et al. 2002). As mentioned above, *Alu* SINEs are the most widespread class of transposable elements, with about one million copies in the genome (Lander et al. 2001). Moreover, *Alu* elements are more frequent in GC- and gene-rich regions than are other retrotransposons such as LINES and endogenous retroviruses. Unlike *Alu* elements, LINES are underrepresented, truncated, or rearranged (Lander et al. 2001). Thus, *Alu* elements are a likely substrate for recombination events in gene-rich regions, as they provide targets for such events. However, the role of *Alu* elements in shaping the architecture of segmental duplications (low-copy repeats) in the primate genome has not been demonstrated.

*Alu* SINEs can conceivably mediate some of the dynamic processes forming segmental duplications or LCRs in evolution. This might ultimately shed light on the recombination mechanisms responsible for the etiology of genomic disorders. Here we present our analysis of the genomic sequence of chromosome 22q11.2 to identify mechanisms shaping LCRs on this chromosome (LCR22s) during evolution. The approach taken was to map the breakpoints within the substrates and products of rearrangements. We present here evidence for specific *Alu*-mediated mechanisms in shaping the genes within LCRs.

## RESULTS

To uncover sequence relationships comprising the minimal tilting path of clones across the 22q11.2 region, we used miropeats software (Parsons 1995) following removal of high-copy repetitive elements from the analysis (RepeatMasker; <http://ftp.genome.washington.edu/cgi-bin/RepeatMasker/>; Repbase Update libraries; Jurka 2000). Those bearing homologies to each other comprise LCRs. LCR22s constitute the majority of LCRs on 22q11.2 and share sequences with those LCRs that mediate the common chromosome 22q11.2 disorders (Edelmann et al. 1999a; Shaikh et al. 2000). After examining their relationships with each other, we delineated the borders of the LCR22s using BLAST (Altschul et al. 1990) and BLAT (Kent 2002) analyses. LCR22s were found to comprise 11.6% of the 6-Mb 22q11.2 interval (Table 1). Some LCR22s are large, such as LCR22-2 and LCR22-4, which are both 240 kb in size (Table 1). LCR22-3a, situated between the two, contains an uncloned region within; thus, its size is unknown. Some LCR22s are quite small—less than 2 kb. As shown in Figure 1A, the LCR22s are composed of blocks or modules forming a complex pattern. Most of them appear to be partial duplicates of each other (Fig. 1A). The two greatest in size, LCR22-2 and LCR22-4, contain a large region of overall direct orientation (Fig. 1A; Shaikh et al. 2000). Homologous recombination events between these two LCR22s mediate recurrent 22q11.2 rearrangements associated with VCFS/DGS and CES (Fig. 1B; Edelmann et al. 1999b). Thus, these two intervals, due to their high degree of direct identity (97%–99%; Shaikh et al. 2000), are excellent substrates for unequal crossing-over events. That the two LCR22s share a large region of homology to each other suggests that they evolved from a common progenitor.

As mentioned, both genes and pseudogenes lie within the

**Table 1.** Positions of LCR22s

LCR22	Begins	Ends	Size
2	15582996	15824819	241823
ADU	15924965	15926455	1490
	15945797	15947086	1289
3a	17248464	17433656	nd
3b	17740485	17752123	11627
4	18164256	18409514	245258
5	19661949	19696275	34326
6	20347738	20362731	14993
	20419414	20442294	22880
	20505214	20529866	24652
7	21329062	21360773	31711
8	21700353	21790369	90016
Interval	15597234	21790369	
Totals		6193135	720065
%			11.63%

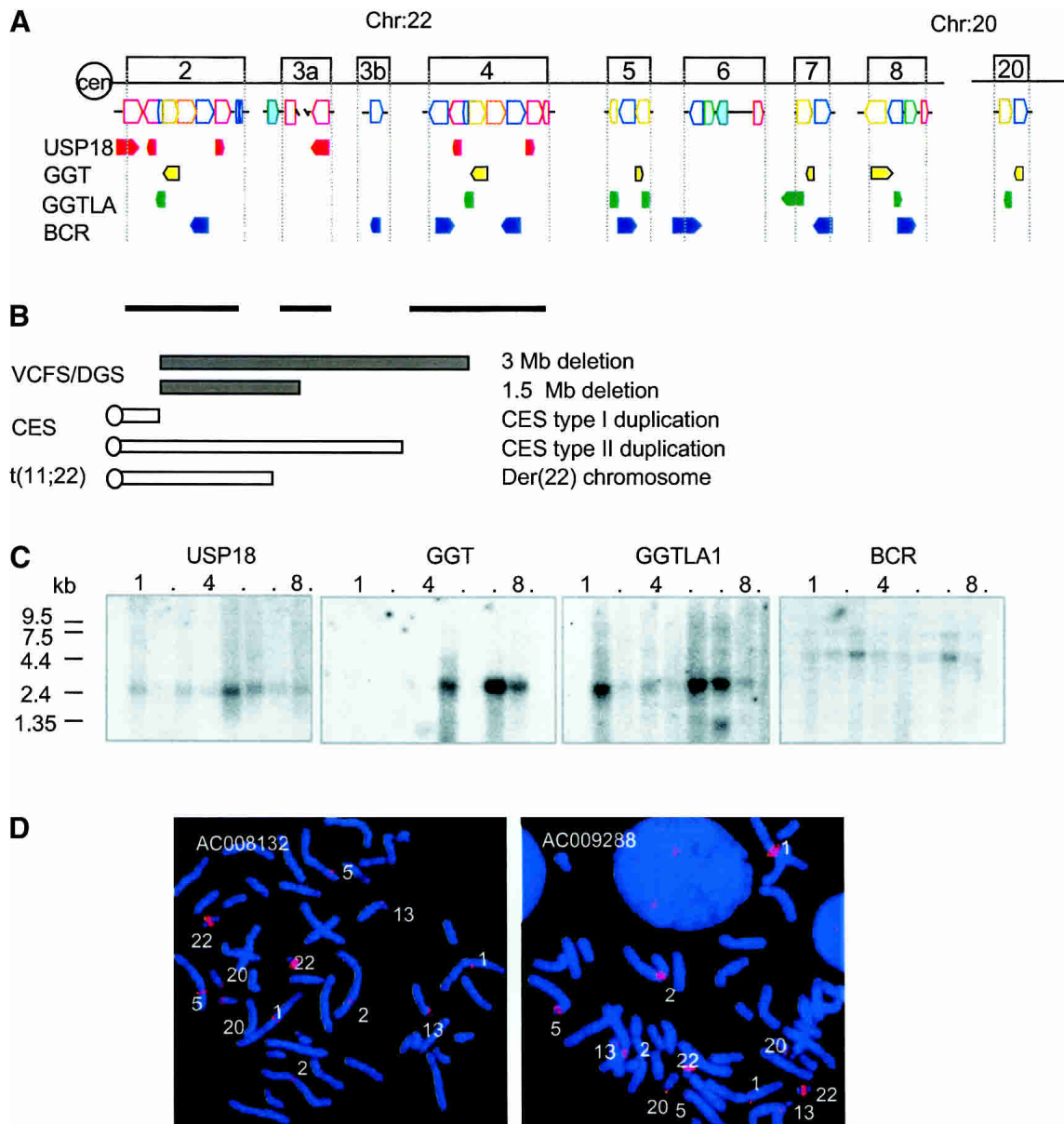
LCR22s. Some of the genes have been well characterized (Heisterkamp and Groffen 1988). The four known genes in the LCR22s are *USP18* (Schwer et al. 2000), *GGT* (Rajpert-De Meyts et al. 1988), *GGT1A* (Heisterkamp et al. 1991; Morris et al. 1993), and *BCR* (Heisterkamp et al. 1985). *USP18* maps to LCR22-2, *GGT* maps to LCR22-8, *GGT1A* maps to LCR22-7, and *BCR* maps to LCR22-6 (Fig. 1A). Parts of each therein have been duplicated, forming truncated unprocessed pseudogenes, comprising the block structure of LCR22s (Fig. 1A). Selected components of each gene were duplicated, suggesting that specific mechanisms were responsible for the duplication process.

Northern blot analysis was performed to determine the pattern of expression of the four known genes and to ascertain whether the smaller pseudogene copies are expressed. Each of the four genes were expressed as full length-transcripts in multiple tissues, and showed distinctive patterns of expression, suggesting that they are each subjected to their own transcriptional regulation (Fig. 1C). In general, the unprocessed pseudogenes, which would generate different-sized transcripts, were not strongly expressed.

We were interested in whether these genes map exclusively to chromosome 22q11.2 or elsewhere in the genome. To detect additional copies, we performed low-stringency fluorescence in situ hybridization (FISH) mapping of normal metaphase chromosomes. Examination of the sequence of the human genome revealed copies of the LCR22 genes on the chromosomal regions 1p13, 2p11, 5p13, 13p11, and 20p12, which coincide with most of the signals detected by low-stringency FISH (Fig. 1D). This was similar to what was previously observed using different probes on 22q11.2 (Bailey et al. 2002b).

### Duplication and Transposition of *USP18*

To understand how the genes and pseudogene copies in the LCR22s formed (Fig. 1A), we performed a BLAT analysis and compared the genomic structure of the full-length gene and pseudogene copies. This was done with no model or bias for what sequences could lie within the breakpoints. We began with an analysis of the sequence for the most centromeric gene, termed *USP18* (Schwer et al. 2000), in LCR22-2 (Fig. 1A). The gene/pseudogene copies of *USP18* in LCR22-2, -3a, and -4, illustrated in Figure 1A, are shown in more detail within the block structure of the LCR22s in Figure 2A. Using the tracks for known genes and high-copy repetitive elements in the UCSC browser (Kent 2002) as a guide, we traced the intervals surrounding the breakpoints within the ancestral *USP18* gene and the junctions of the dupli-

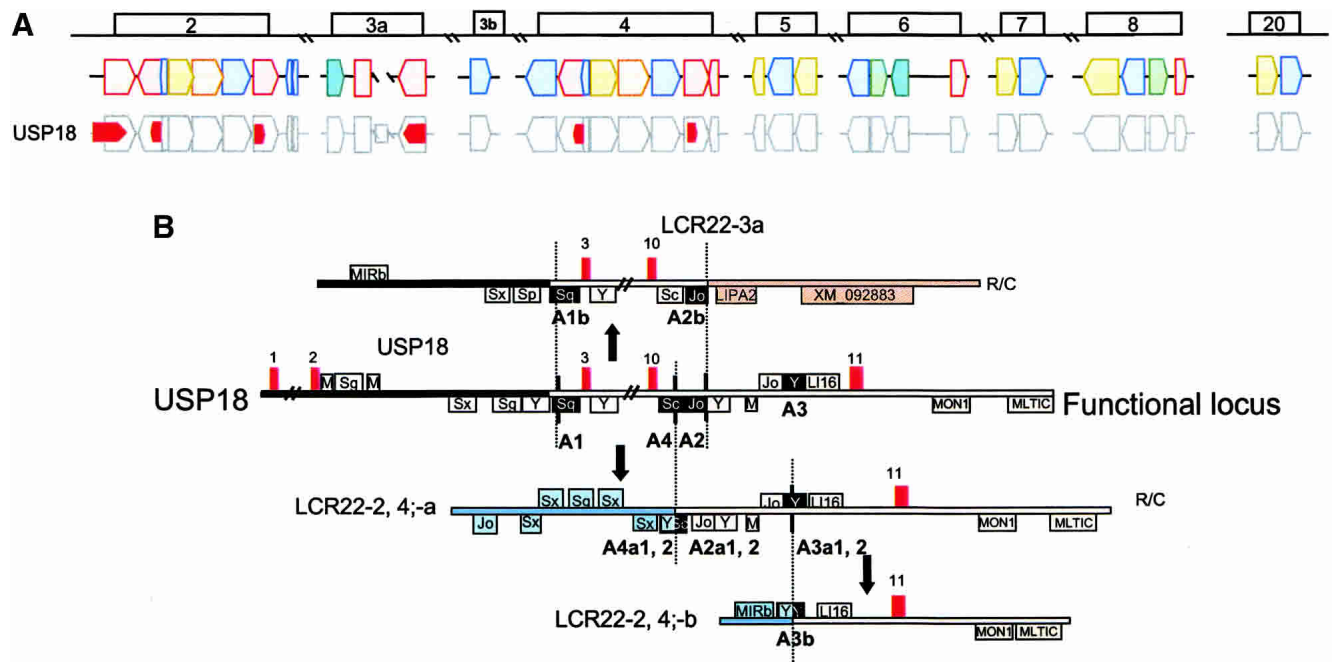


**Figure 1** (A) Genes in the LCR22s. Four functional genes, *USP18* (red), *GGT* (yellow), *GGTLA* (green), and *BCR* (blue) map to LCR22-2, LCR22-8, LCR22-7 and LCR22-6, respectively. Each has become copied during evolution, resulting in a complex pattern within blocks comprising LCR22s (colored blocks corresponding to LCR22 genes, orientation shown). The orientation of the genes and pseudogene copies with respect to the centromere is indicated. (B) Chromosome rearrangement disorders on 22q11.2. The bars under LCR22-2, LCR22-3a, and LCR22-4 depict the intervals harboring the common deletion endpoints, duplication endpoints, and translocation breakpoints in patients with VCFS/DGS, CES, and der(22) syndrome, respectively. (C) Northern blot analysis. We performed a Northern blot analysis using expression sequence tag (EST) DNA probes for *USP18*, *GGT*, *GGTLA*, and *BCR*. Autoradiograms of human multitissue Northern blots (Clontech) containing heart, brain (whole), placenta, lung, liver, skeletal muscle, kidney, and pancreas tissues were probed with radiolabeled PCR products from ESTs. The *USP18*, *GGT*, and *BCR* probes are derived from the last exon (except for *USP18* in LCR22-3a), which would recognize all of the duplicated copies of each on chromosome 22 if transcribed. The band sizes for *BCR* are 4.79 kb, 7.50 kb; the expected sizes were 2.6 kb and 4.7 kb. The band sizes for *GGT* are 1.29 kb and 3.00 kb; the expected sizes were 1.8 kb and 2.5 kb. The band sizes for *GGTLA* are 1.58 kb and 2.8 kb; the expected size was 2.4 kb. The band size for *USP18* is 1.95 kb; the expected size was 1.8 kb. (D) Low-stringency FISH mapping. Probes from LCR22-2 (GenBank AC008132) and LCR22-4 (GenBank AC009288) were used for low-stringency FISH mapping. Hybridization signals were detected in the vicinity of chromosomes 1p13, 2p11, 5p13, 13p11, and 20p12. The strongest signals were detected on chromosome 22q11, due to the presence of multiple copies of sequences contained within the LCR22 clones.

ated pseudogene copies (Fig. 2B). We found that exons 3–10 of *USP18* became duplicated to LCR22-3a, whereas the last exon, exon 11, became duplicated to two locations in LCR22-2 (Fig. 2B, red blocks; LCR22-2-a, b) and to two locations in LCR22-4 (red blocks; LCR22-4-a, b). The first feature that was particularly striking was the presence of *Alu* elements at break-

points in the ancestral *USP18* locus and junctions in the duplicated copies (Fig. 2B).

The breakpoints on either side of *USP18* exons 3–10, creating the copy in LCR22-3a, were in the vicinity of *Alu* elements (Fig. 2B, A1, A2, black filled boxes; Supplemental Fig. 1 online at [http://www.girinst.org/server/supplement/03\\_babcock/](http://www.girinst.org/server/supplement/03_babcock/)



**Figure 2** (A) Position of *USP18* within the block structure of the LCR22s. Each of the LCR22s are ordered with respect to the centromere of chromosome 22q11.2. The block structure of LCR22 was created using miropeats software to detect sequence relationships. The colors of the blocks were chosen to be coordinated with the genes within. The *USP18* gene (red) is shown in its proper transcription orientation. The position of the functional *USP18* locus (most centromeric copy in LCR22) and its unprocessed pseudogene copies within the LCR22 block structure are shown. (B) Duplication events for *USP18*. The exons (numbered red boxes) and high-copy repeating elements are shown (in a "+" orientation above the line and in a "-" orientation below the line). *Alu* elements are indicated by the subfamily. Mer elements (abbreviated as "M") were drawn as tracked by RepeatMasker (UCSC browser; June 2002 assembly) in the vicinity of the *USP18* functional locus as shown (11 exons; chr22:15573184–15600410). R/C, reverse and complement. The position of the breakpoints in the *USP18* functional locus (substrate) and junctions in the duplicated copies (products) are indicated with a vertical line separating the juxtaposed intervals, shown in different colors depending on the LCR22 block to which they map. The *Alu* elements involved in the recombination events have black fill. The positions of the breakpoints in LCR22-2 that are shown are 15685023–15689864 (LCR22-2), 18244496–18249337 (LCR22-4), and 17418000–17420692 (LCR22-3a). A different breakpoint in the interval between exons 10 and 11 occurred, creating the copy in LCR22-2, shown at positions 15790288–15794241 and LCR22-4 at 18351456–18355409. For more details see Supplemental Figures 1–3.

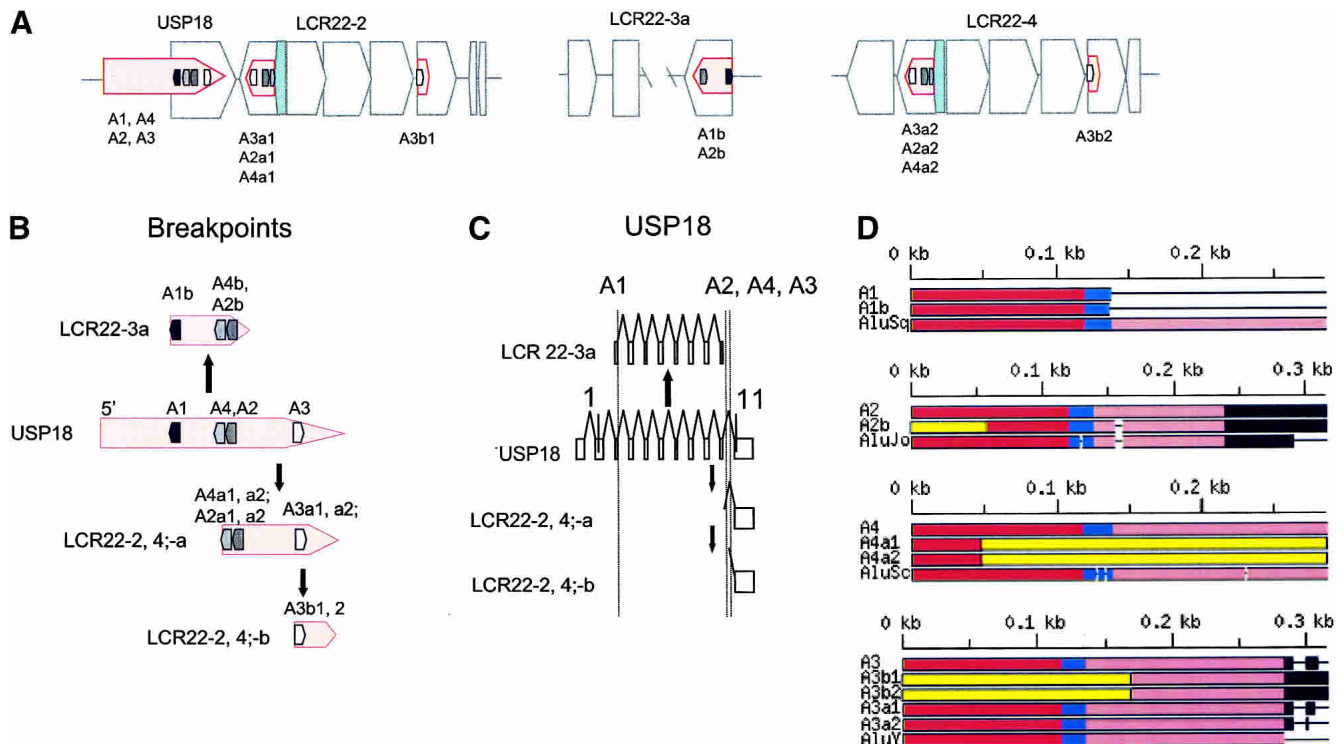
index.html). One of them, *Alu* A1, is located between exons 2 and 3 of *USP18*. Sequences on one side of this *Alu* were present in the ancestral *USP18* locus but absent from the duplicated copy in LCR22-3a. On the other hand, sequences on the other side were present in the unprocessed pseudogene copy in LCR22-3a. A similar situation occurred for the region surrounding the other *Alu*, termed A2 (Fig. 2B). Sequences on one side of this *Alu* are present in the ancestral locus of *USP18*, but sequences on the other side of the *Alu* are missing from the LCR22-3a copy. *Alu* A2 thus lies in the vicinity of the breakpoint (Fig. 2B). *Alu* A1 and its copy, A1b and *Alu* A2-A2b are more closely related to each other than to any other *Alu* element in the genome (Suppl. Figs. 1,2), indicating that they are copies rather than independent insertions.

LCR22-2 and LCR22-4 each have two separate copies of *USP18* exon 11 (Fig. 2A). The more proximal copy in LCR22-2 and LCR22-4 (LCR22-2a, LCR22-4a) are similar to each other, and they have a larger region deriving from the *USP18* ancestral locus than the more distal copy in both LCR22s (LCR22-2b, LCR22-4b). To determine how the copies were formed, we performed a BLAT analysis of the exon 10–11 interval of *USP18*. Examination of the proximal copy showed that exon 11 became juxtaposed to sequences deriving from the vicinity of another LCR22 block, harboring BCR and the predicted gene, DKFZ434p211 (Fig. 2A,B, blue block, LCR22-6). To form this copy of exon 11, a breakpoint occurred in the vicinity of *Alu* A4 (*Alu* Sc; Suppl. Fig. 3). This conclusion was reached because sequences on one side of the *Alu*

A4 are derived from LCR22-6, whereas sequences on the other side of *Alu* A4 are derived from the ancestral *USP18* locus.

The most distal copy of exon 11 (LCR22-2b, LCR22-4b) has a smaller region derived from the ancestral *USP18* locus. To generate this copy, a breakpoint occurred in the vicinity of *Alu* A3 (Fig. 2B; Suppl. Figs. 2,3). This was deduced by examining the sequences at the breakpoints and junctions. After discovering an *Alu* at the breakpoint junction, we carefully examined the sequences that flank either side of the *Alu*. Thus, sequences proximal to the copy of *Alu* A3 (copy termed *Alu* A3b) are present in LCR22-6, whereas sequences distal are present in the ancestral locus of *USP18*. *Alu* A3, A3b1 (copy in LCR22-2b) and A3b2 (copy in LCR22-4b) are highly related to each other, eliminating the possibility of independent insertions (Suppl. Fig. 2).

The images depicted in Figure 2B are shown more concisely in Figure 3A,B. In these figure panels, *Alus* A1, A2, A3, and A4 in *USP18* and their copies are illustrated in their proper orientation within the blocks comprising LCR22-2, -3a, and -4 (Fig. 3A). We were interested in whether the *Alu* elements formed the borders of LCR22 blocks, because this would suggest that they participated in shaping the LCR22s during evolution. As we anticipated, *Alu* A1 demarcates the beginning of LCR22-2, and *Alu* A1b represents the distal end of LCR22-3a. A breakpoint in *Alu* A2 resulted in a slightly truncated product (A2b; Suppl. Fig. 1). A breakpoint in *Alu* A4 was responsible for the generation of the copy of *USP18* in LCR22-2a and -4a (Fig. 3A,B). A breakpoint within *Alu* A3 was responsible for the movement of the smallest



**Figure 3** (A) Position of *Alu* elements involved in *USP18* copies in LCR22-2, -3a, and -4. The *USP18* gene (light red shapes; exonic orientation shown) within the block structure of LCR22-2, -3a, and -4 is shown. *Alu* elements A1 (black), A2 (gray), and A3 (white) are illustrated in the “+” or “-” orientation. The duplicated copies of the *Alu* elements within their respective copies of *USP18* are illustrated. (B) LCR22 breakpoints occurred within *Alu* elements. The position of the *Alus* (A1, black; A4, light gray; A2, dark gray; A3, white) at the breakpoints (dotted line) in the *USP18* functional locus (light red) and copies are shown. (C) *Alus* involved in breakpoints with respect to the genomic organization of *USP18*. The genomic organization of *USP18* was determined by comparing the cDNA sequence with the human genomic sequence by BLAST analysis. The position of *Alus* A1, A2, A3, and A4 with respect to genomic organization of *USP18* is illustrated (dotted line). (D) Structure of *Alu* elements A1, A2, A3, and A4, and their duplicated copies. Each *Alu* monomer (red, pink) is illustrated on either side of the A-rich spacer (blue). The 3' poly A tail is shown (black). *Alu* A1 and its copy, A1b in LCR22-3a, contain the first monomer and spacer only, and both are part of the *Alu* Sq family. *Alu* A2, *Alu* Jo, and its copy in LCR22-3a, A2b are shown. The 5' part of the *Alu* is not part of the *Alu* Jo subclass (yellow box). *Alu* A4 is a member of the *Alu* Sc subclass. The duplicated copies, A4a1 and A4a2, are chimeric, composed in part with sequences from A4 and part from another *Alu* (yellow box). *Alu* A3 and its copies, A3b1, A3b2, A3a1, and A3a2 are illustrated. *Alus* A3b1 and A3b2 contain only the second monomer and poly A site from *Alu* A3 and the rest from another *Alu* element (yellow). More details are provided in the Supplemental Figures 1–3.

part of the exon 11 region of *USP18* to LCR22-2b and LCR22-4b (Fig. 3A,B). These breakpoints demarcate the junctions between blocks comprising LCR22-2 and -4 (Fig. 3A) and thus form the borders of modules.

The positions of *Alus* A1, A2, A3, and A4 are shown with respect to the genomic organization of *USP18* and its unprocessed pseudogene copies in Figure 3C. This shows that the breakpoints at the 5' and 3' ends of the gene in LCR22-2, -3a, and -4 can be explained by *Alu*-mediated events. We examined the high-copy repetitive sequence content in the 27,228-bp *USP18* gene locus on 22q11.2 using RepeatMasker. Repeats comprise 59% of the gene locus: *Alus* comprise 24.5%, LINE1 elements comprise 20%, and LTR-retrotransposons comprise 9%. Their proportions being equal, if the appearance of *Alu* elements at the breakpoints were simply by chance, we would expect to see an equal number of LINEs at the breakpoints. However, we found only *Alus*. Therefore, we do not think the breakpoints occurred in *Alu* elements by chance.

Next, we were interested in the precise position of the breakpoints in the *Alu* elements. *Alu* elements contain two monomers with a spacer in between and a 3' poly A site (Fig. 3D; Suppl. Figs. 1–3). For *Alu* A1, an *Alu* Sq, only one monomer was present in both the ancestral *USP18* locus and in the copy present in LCR22-

3a (*Alu* A1b; Fig. 3D). The breakpoint occurred at the 3' side of the spacer (Fig. 3D, blue bar) between the two monomers, as depicted in red and pink, creating the copy in LCR22-3a (Suppl. Fig. 1 online). For *Alu* A2, *Alu* Jo, the breakpoint occurred within the first monomer of the *Alu* (Suppl. Fig. 1; yellow represents a fusion with another *Alu*), resulting in the copy in LCR22-3a. Thus, for these two breakpoints creating the truncated copy in LCR22-3a, the precise mechanism could not be discerned. This is not the case for the rearrangements in LCR22-2 and LCR22-4.

The two *Alus* A4 and A3 were involved in the rearrangements resulting in duplicated copies of *USP18* exon 11 in LCR22-2 and LCR22-4. *Alu* A4 belongs to the *Alu* Sc subfamily of *Alu* elements (Fig. 3D). The duplicated copy of *Alu* A4 in LCR22-2-a and LCR22-4-a (A4a1, A4a2) is chimeric; part derives from *Alu* A4 and part is from another *Alu* element (*Alu* Y; yellow bar, Figs. 2B, 3D). Thus, a homologous recombination event between two *Alu* elements might have been responsible for creating the chimeric *Alu* product. *Alu* A3 is part of the *Alu* Y or younger *Alu* subfamily. The duplicated *Alu* A3 products, A3b1 and A3b2, in LCR22-2-b and LCR22-4-b, respectively, are chimeric as well, and contain part of *Alu* A3, and part from a different *Alu* element (*Alu* Y; yellow bar, Figs. 2B, 3D). Both rearrangements involving these two elements implicate unequal crossover mechanisms.

## Duplication and Transposition Processes of *GGT*

The functional *GGT* gene (Rajpert-De Meyts et al. 1988) maps to LCR22-8, but unprocessed pseudogene copies (Morris et al. 1993) map to other LCR22s and other loci in the genome (Fig. 1A,D). The genes involved in the duplication process of *GGT* are shown with respect to the LCR22 block structure in Figure 4A. Exons 2–17 of *GGT* became duplicated to LCR22-2 and LCR22-4 (Fig. 4A,B), whereas exons 13–17 became duplicated onto others (Fig. 4A,B). The overall organization of the genes/pseudogenes for *GGT*, *IGSF3* (functional locus on chromosome 1p13.1), and the predicted gene, *DKFZp434p211* involved in the duplication of *GGT* are illustrated (Fig. 4A). *DKFZp434p211* is present in many copies in the genome (Courseaux et al. 2003). On 22q11.2, it is intertwined with *BCR* (Fig. 4A; Bailey et al. 2002b).

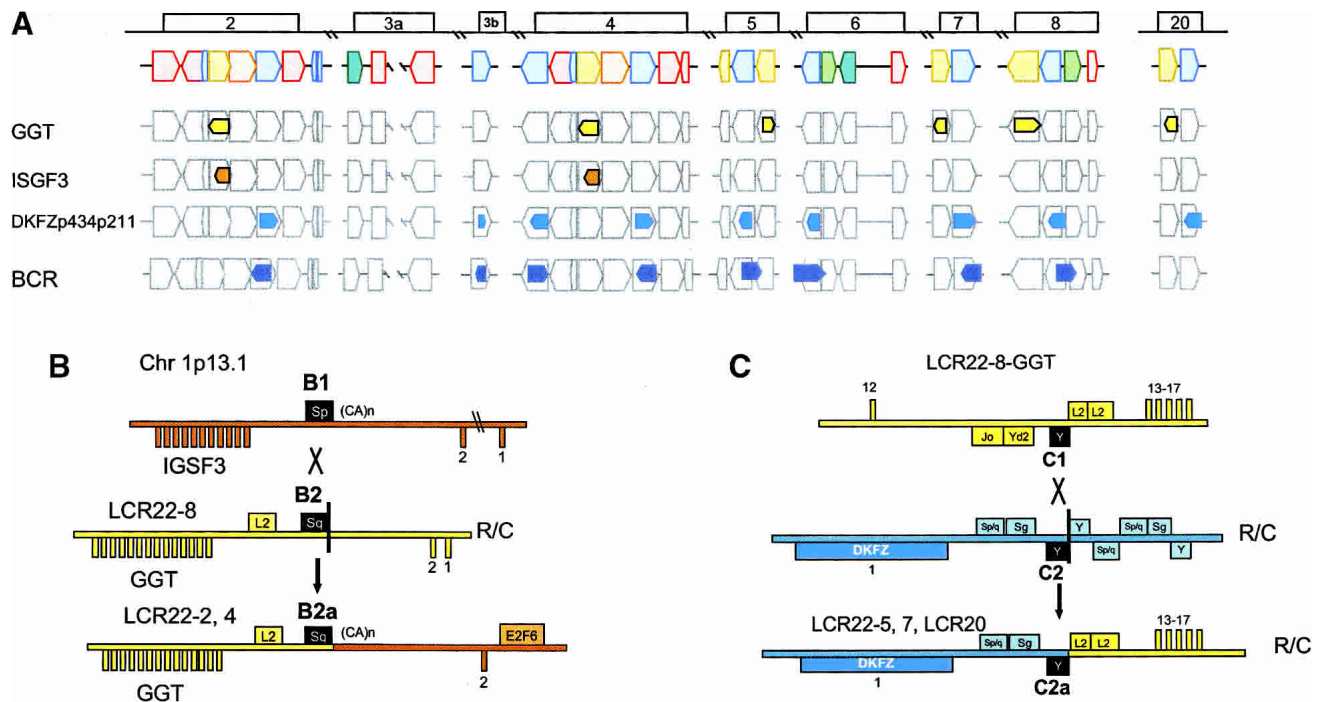
As with *USP18*, we used BLAT and the UCSC browser to examine the sequences between the exons of *GGT* that became duplicated. Figure 4B shows how the second exon and surrounding intron of *IGSF3*, whose functional ancestral locus is on chromosome 1p13.1 (orange bar, Fig. 4B), was copied to *GGT* on 22q11.2 (yellow bar, Fig. 4B).

The evidence for the rearrangement between *GGT* and *IGSF3* derived from examining the breakpoints and junctions for the rearrangements. As before, an *Alu* element was at the breakpoint and junction of this duplication event. The sequences including

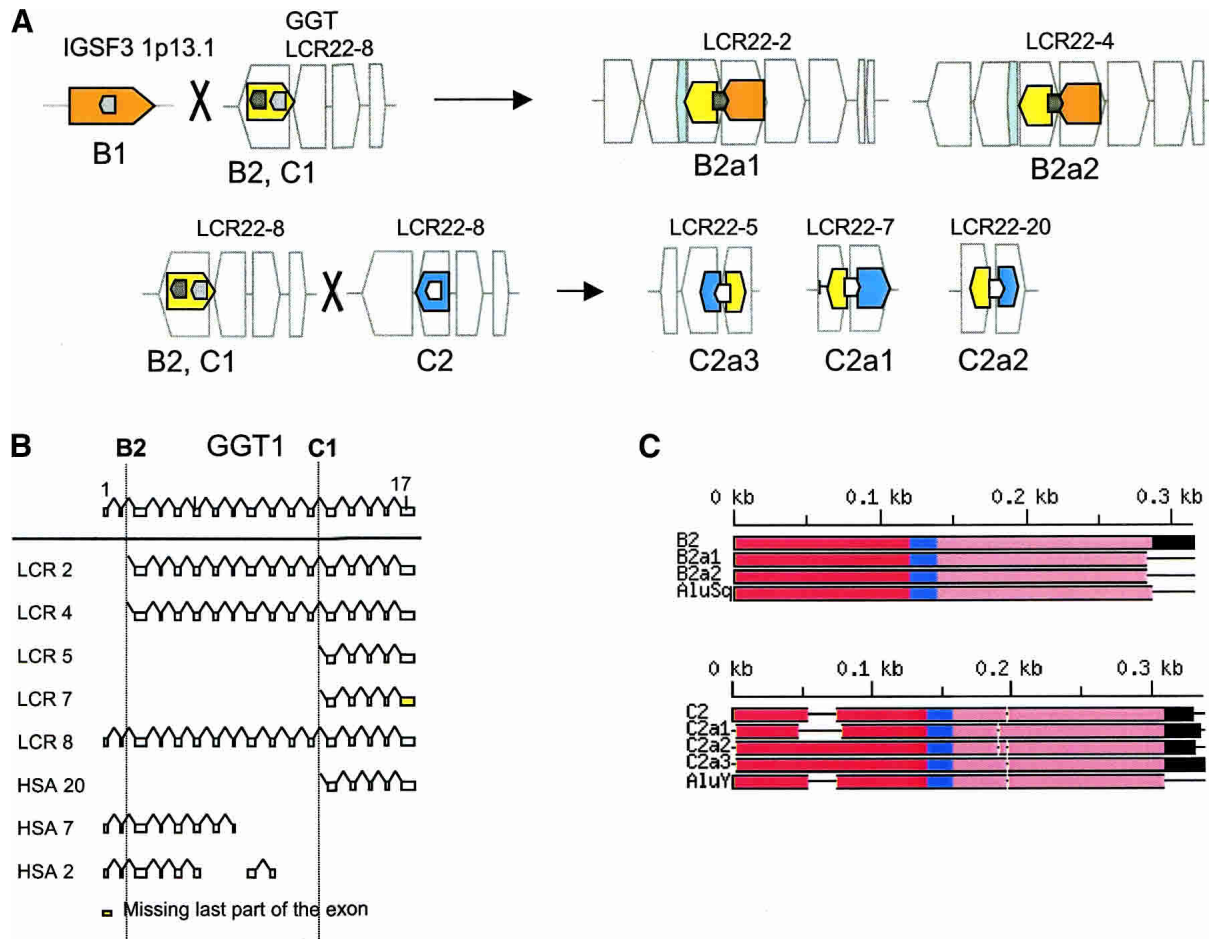
and proximal (left) to the *Alu* *Sq* in LCR22-2 and LCR22-4 (B2a1 and B2a1) derive from the *GGT* locus in LCR22-8 (*Alu* B2), whereas sequences immediately distal (right) are from the *IGSF3* locus on chromosome 1 (Fig. 4B). The rearrangement was likely mediated by a recombination event between two *Alu* elements, *Alu* B1 and *Alu* B2. We found that there was a breakpoint not in the middle of the *Alu* element, but at the end (vertical black bar, Fig. 4B). Thus, the *Alu* B1 in *IGSF3* on chromosome 1p13.1 does not have any clear similarity to the products (B2a1, LCR22-2 and B2a2, LCR22-4). A BLAT search confirmed that B2, B2a1 (LCR22-2), and B2a2 (LCR22-4) are nearly identical and are not likely independent insertions (Suppl. Fig. 4).

A different breakpoint in the *GGT* gene occurred to create the copies in LCR22-5, LCR22-7, and LCR20 (Fig. 4C). The breakpoint occurred in the vicinity of *Alu* elements. *Alu* C1 is at the breakpoint of *GGT* in LCR22-8 and *Alu* C2 in the *DKFZp434p211* locus in another LCR22 (Fig. 4C). Again, the breakpoint was at the end of the *Alu* C2 (vertical black bar, Fig. 4C; Suppl. Fig. 5).

These events are illustrated more concisely in Figure 5A to determine whether the breakpoint junctions were junctions between modules comprising the LCR22s. *Alu* B1 is within *IGSF3* on chromosome 1p13.1, and *Alu* B2 is present within the *GGT* locus in LCR22-8. The duplicated copies of B2, *Alu* B2a1 and B2a1, are at the junction between blocks comprising LCR22-2 and LCR22-4



**Figure 4** (A) Positions of *GGT*, *ISGF3*, and predicted gene *DKFZp434p211* within the block structure of the LCR22s. Each of the LCR22s is ordered with respect to the centromere of chromosome 22q11.2. The block structure of LCR22 was created using miropeats software to detect sequence relationships. The colors of the blocks were chosen to coordinate with the genes within. The *GGT* (yellow), *ISGF3* (orange), and *DKFZp434p211* (overlapping with *BCR*; blue) genes are shown in their proper transcription orientation. The position of the functional *GGT* locus (LCR22-8) and its unprocessed pseudogene copies within the LCR22 block structure are shown. (B) Recombination events in *GGT* and *IGSF3*. *GGT* exons 3–17 (chr22:21695000–21722900; yellow numbered boxes) became duplicated to LCR22-2 and LCR22-4. *IGSF3* (orange; 1p13.1; chr1:117622772–117711984) became juxtaposed to the copies of *GGT*. R/C, reverse/complement. Both *GGT* and *IGSF3* harbor the *Alu* S subfamily member (*Alu* B1, *IGSF3*; *Alu* B2, *GGT*) at the breakpoint junction (*Alu* B2a1, *Alu* B2a2, LCR22-2 and LCR22-4, respectively) between the two functional genes (black-filled elements). The products of the recombination are shown (LCR22-2, chr22:15700573–15723288 and LCR22-4, chr22:18260039–18282533). (C) Recombination events in *GGT* and predicted gene *DKFZp434p211*. The two substrates, *GGT* and *DKFZp434p211* (overlapping with *BCR*), are shown. R/C, reverse/complement. Examination of the pattern of exons and high-copy repetitive elements revealed an *Alu* Y that was present at the junction between the two substrates in the duplicated products of the recombination event (black fill) in LCR22-5, LCR22-7, and LCR20 (Suppl. Fig. 4). The L2 LINE elements upstream of exon 13 in *GGT* (yellow fill) and the *Alu* elements upstream exon 1 of *DKFZp434p211* (interval) are indicated (blue line). A putative unequal crossover occurred between *Alu* C1 and *Alu* C2 in duplicated copies of *GGT* and *DKFZp434p211*, resulting in the fusion product shown. Sequences upstream and including *Alu* C2 in the fusion product were present in the *GGT* substrate, and sequences distal to the *Alu* were present in the *DKFZp434p211* substrate.



**Figure 5** (Continued on next page)

(Fig. 5A). *Alu* C2 and duplicated copies of *Alu* C2 are at the junctions between blocks in three LCR22s, implicating these elements in shaping the genome architecture of LCR22s and one LCR that has migrated to chromosome 20 (Fig. 5A). Figure 5B shows the position of *Alus* B1 and C1 with respect to the genomic organization of *GGT*. Figure 5C illustrates the organization of the *Alu* substrates and products and demonstrates that they are largely unarranged.

The precise positions of the breakpoints in *Alus* B2 and C2 are shown in Figure 5D (Suppl. Figs. 4,5). In the case of *Alu* B2, the breakpoint occurred within the 3' *Alu* target site for its integration. The end of homology between the *Alu* B2 and *B2a1* and *B2a2* products corresponds to the position of the breakpoint. The presence of two Gs immediately flanking the polyA tail of *Alu* element in both the substrate and products delineates the position of the breakpoint. The position of the presumed breakpoint (GA; red in Fig. 5D1) corresponds to start of the (partially preserved) 3' target-site duplication after *Alu* insertion, that is, 3' duplicated target, corresponding with the L1 endonuclease target site (Fig. 5D).

A similar situation occurred for *Alu* C2. The breakpoint occurred in the 5' target site of this *Alu* element (Fig. 5D2). The highlighted TTAA motif (yellow) corresponds to the putative original *Alu* target site; the first DNA nick by L1 endonuclease probably occurred between TT and AA, 13 bp upstream of *Alu* C2a copy (Fig. 5D2). The breakpoint within the *Alu* products C2a1, C2a2, and C2a3 is located 15 bp downstream the expected

first nick (red), perfectly fitting with the preference of L1 endonuclease for a second nick, 15–16 bp downstream of the first one (Jurka 1997). Thus the position of the breakpoint coincides with the initial target for L1-mediated endonucleolytic cleavage and *Alu* integration (Jurka 1997). The same target if revisited by the L1 endonuclease can trigger recombination of the adjacent *Alu* element. This fits a model of L1 endonuclease involvement in both the initial *Alu* integration and subsequent recombination. The second DNA nick probably occurred 2 bp downstream compared to the original insertion, and thus the first two nucleotides were not carried during the recombination event.

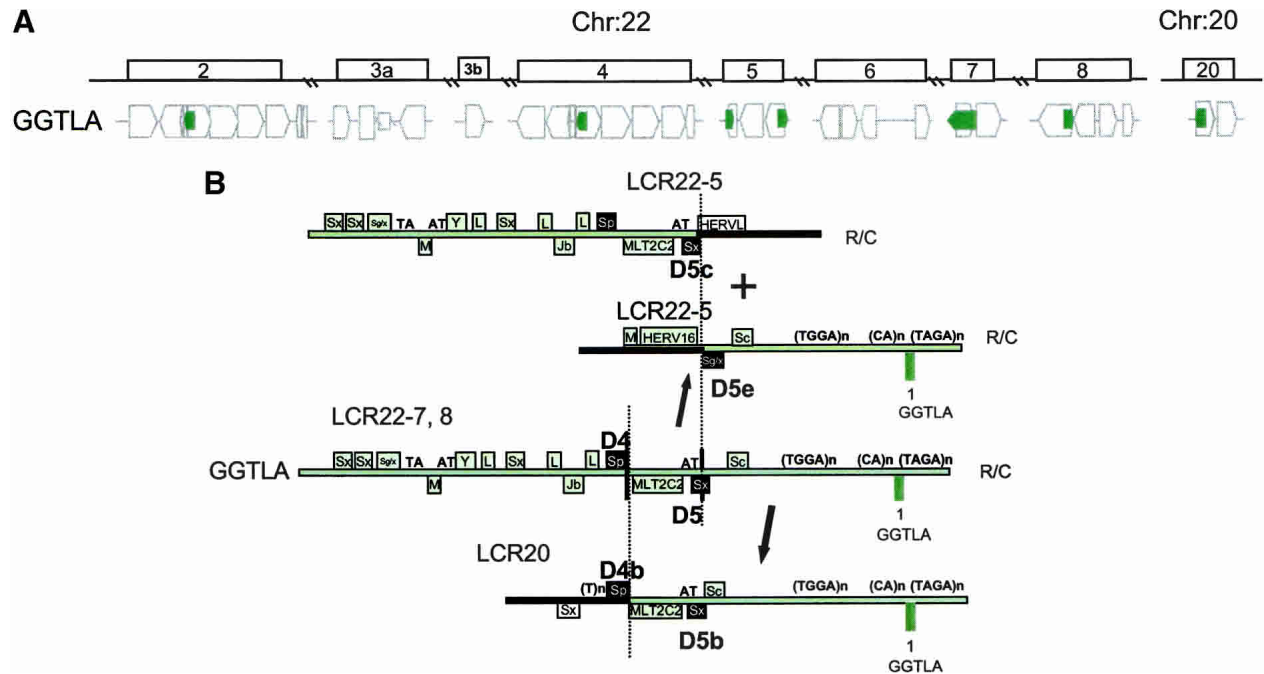
In addition to the 5' breakpoints in *GGT*, we were interested in whether *Alu* elements were present at the 3' breakpoints in *GGT*. We examined the other side of *GGT*, 3' to the last exon (end in chromosome 21721087) and found an *Alu* element at the breakpoint (5' side of *Alu* Yd2, 21748855–21749005, minus orientation) between the blocks.

### Duplication of *GGTLA*

We then examined the duplication events for *GGTLA* (Heisterkamp et al. 1991) mapping to LCR22-7 (Fig. 6A). As with *USP18* and *GGT*, we examined the genes involved in the rearrangement events for *GGTLA* (Fig. 6A). *GGTLA* maps to LCR22-7, whereas duplicated truncated copies map to additional loci (Fig. 6A). In all cases, we found that the region surrounding exon 1 of *GGTLA* was involved in the rearrangement. We examined the sequences in the vicinity of exon 1 and its duplicated copies (Fig. 6B).

<b>D 1</b>	B2	1	ggccagcaat	atgcagcatc	tattatggac	acagaacatt	cccatcacat
	B2a1	1	ggccagcaat	atgcagcatc	tattatggac	acagaacatt	cccatcacat
	B2a2	1	ggccagcaat	atgcagcatc	tattatggac	acagaacatt	cccatcacat
	AluSq	1	-----	-----	-----	-----	-----
	B2	51	GGCCGGGTGC	AGTGGCTCAC	ACCTATAATC	CCAGCACTTT	GGGAGGCAGA
	B2a1	51	GGCCGGGTGC	AGTGGCTCAC	GCCTATAATC	CCAGCACTTT	GGGAGGCAGA
	B2a2	51	GGCCGGGTGC	AGTGGCTCAC	GCCTTTAATC	CCAGCACTTT	GGGAGGCAGA
	AluSq	1	GGCCGGGCGC	GGTGGCTCAC	GCCTGTAATC	CCAGCACTTT	GGGAGGCAGA
	...						
	B2	300	CTCCAGCCTG	GGCAACAAGA	GTGAAACTCC	GTCTCAaaa	aaatgcaaaa
B2a1	300	CTCCAGCCTG	GGCCACAAGA	GTGAAACTCC	GTCACAcaca	cacacacaca	
B2a2	300	CTCCAGCCTG	GGCCACAAGA	GTGAAACTCC	GTCACAcaca	cacacacaca	
AluSq	249	CTCCAGCCTG	GGCAACAAGA	GCGAAACTCC	GTCTCA----	-----	
B2	350	aaacaaaaac	-----	-----aaa	agga <b>cat</b> ttc	<b>c</b> accacaagt	
B2a1	350	cacaca----	-----	-agaaaaaaa	ag <b>g</b> ctcctg	ctgggacaca	
B2a2	350	cacacacaaa	aaaaaaaaaa	aagaaaaaaa	ag <b>g</b> ctcctg	ctggaacaca	
AluSq	285	-----	-----	-----	ag <b>g</b> ctcctg	-----	
B2	383	catggggcag	gggctggcc	tggtcagtga	ccccgtccta	gcattgacgc	
B2a1	385	gactagttag	agaaaggaaa	aataaacaaa	tgatagtatg	tgtattaata	
B2a2	400	gactagttag	agaaaggaaa	aataaacaaa	tgatagtatg	tgtattaata	
AluSq	285	-----	-----	-----	-----	-----	
<b>2</b>	C2a	1	cctccaaaag	tgc <b>a</b> ccgcy	cccggccttt	ttttttaag	ac <b>ag</b> agtctc
	C2a1	1	c--agaggat	ggaccccgaag	gccgaagaaa	atgcctcaag	ggagtttcaa
	C2a2	1	cgagaggat	ggaccccgaag	gccgaagaaa	atgcctcaag	ggagtttcaa
	C2a3	1	c--agaggat	ggaccccgaag	gccgaagaaa	atgcctcaag	ggagtttcaa
	AluY	1	-----	-----	-----	-----	-----
	C2a	51	GGCCGGGCGC	GGTGGCTCAC	GCCTTTAATC	CCGCACTTT	GGGAGGCCGA
	C2a1	49	CACCGGGCGC	GGTGGCTCAC	GCCTGTAATC	CCAGCACTTT	GGGAGGG---
	C2a2	51	CACCGGGCGC	GGTGGCTCAC	GCCTGTAATC	CCAGCACTTT	GGGAGGCCGA
	C2a3	49	CACCGGGCGC	GGTGGCTCAC	GCCTGTAATC	CCAGCACTTT	GGGAGGCCGA
	AluY	1	GGCCGGGCGC	GGTGGCTCAC	GCCTGTAATC	CCAGCACTTT	GGGAGGCCGA
...							
C2a	276	GAGCC--GAG	ATCAGGCCAC	TGGAATCCAG	CCTGGGCGAC	AGAGGGAGAC	
C2a1	264	GAGCT--GAG	ATCAGGCCAC	TGGAATCCAG	CCTGGGCGAT	AGAGGGAGAC	
C2a2	295	GAGCC--GAG	ATCAGGCCAC	TGGAATCCAG	GCTGGGCGAC	AGAGGGAGAC	
C2a3	296	GAGCCAGAG	ATCAGGCCAC	TGGAATCCAG	CCTGGGCGAC	AGAGGGAGAC	
AluY	226	GAGCC--GAG	ATCAGGCCAC	TGCACTCCAG	CCTGGGCGAC	AGAGCGAGAC	
C2a	324	TCCATCTCAa	aaaaaaaaaa	aaaaaa----	----aaaag	agtctggctc	
C2a1	312	TCCATCTCAa	aaaaaaaaaa	aaaaaa---	gagagaaaag	agtctggctc	
C2a2	343	TCCATCTCAa	aaaaaaaaaa	aaaaaaaaaa	----aaaag	agtctggctc	
C2a3	346	TCCATCTCAa	aaaaaaaaaa	aaaaaaaaaa	--aaagagag	agtctgactc	
AluY	274	TCCATCTCA-	-----	-----	-----	-----	
C2a	365	tgttgccca	ggctggagt	cagtggcgc	atctcggcg	atcacaatcc	
C2a1	356	tgttgccca	ggctggagt	cagtggcgc	atctcggcg	atcacaatcc	
C2a2	285	tgttgccca	ggctggagt	cagtggcgc	atctcggcg	atcacaatcc	
C2a3	394	tgttgccca	ggctggagt	caatggcgc	atctcagctc	actgcaatct	
AluY	283	-----	-----	-----	-----	-----	

**Figure 5** (A) Position of *Alu* elements involved in shaping *GGT* in the LCR22s. The *GGT* gene (yellow shapes; exonic orientation shown), *IGSF3* (orange shapes), and *DKFZp434p211* (blue shapes) within the block structure of the LCR22s are shown. *Alu* elements B1 (light gray), B2 (charcoal gray), C1 (light gray), and C2 (white) are illustrated in the "+" or "-" orientation. The duplicated copies of the *Alu* elements within their respective copies of *GGT* are illustrated. (B) *Alus* involved in breakpoints with respect to the genomic organization of *GGT*. The genomic organization of *GGT* was determined by comparing the cDNA sequence with the human genomic sequence by BLAST analysis. The position of *Alus* B1 and C1 with respect to the genomic organization of *GGT* is illustrated (dotted line). (C) Structure of *Alu* elements B2 and C2, including their duplicated copies. Each *Alu* monomer (red, pink) is illustrated on either side of the A-rich spacer (blue). The 3' poly A tail is shown (black). *Alu* B2 and its copies are part of the *Alu* Sq subfamily (see Suppl. Fig. 4). *Alu* C2 and its copies are part of the *Alu* Y subfamily (see Suppl. Fig. 5). (D) Breakpoints within *Alu* targets. *Alu* repeats are shown in uppercase and flanking sequences in lowercase. The expected breakpoint positions are marked in red. Potential target site duplications are marked in boldfaced and underlined. (D1) Breakpoint within 3' *Alu* target of *Alu* B2. The 5' flanks of the *Alu* B2 substrate and its products B2a1, B2a2 are homologous, but this is not true of the 3' flanks. The end of homology between *Alu* B2 and substrates corresponds to the position of the breakpoint. *Alu* B2a1 and B2a2 contain a variable (CA)<sub>n</sub> microsatellite within poly A tails, so it is difficult to mark the exact position. However, the presence of two Gs immediately flanking the poly A tail in both the substrate and products suggests the likely position of the breakpoint. During L1 endonuclease-mediated integration, the target sequence is duplicated at the 3' end, except for the first two nucleotides. The position of the presumed breakpoint (GA) corresponds to start of the (partially preserved) 3' *Alu* target-site duplication, i.e., 3' duplicated target of the *Alu* insertion. Thus the recombination breakpoint coincides with the L1 endonuclease target site, which can be attacked by the L1 endonuclease. (D2) Breakpoint within 5' target of *Alu* C2. The 3' flanks of the *Alu* C2 and products C2a1, C2a2, C2a3 are homologous, but this is not true of the 5' flanks; the end of homology between C2 and substrates, corresponds to the position of the breakpoint. The highlighted TTAA motif (yellow) corresponds to the putative original target; the first DNA nick probably occurred between TT and AA, 13 bp upstream of *Alu* C2a. The breakpoint within products is located 15 bp downstream of the expected first nick, perfectly fitting with the L1 endonuclease preference for second nick 15–16 bp downstream of the first one (Jurka 1997). Thus the breakpoint could be initiated by L1 endonuclease revisiting the original *Alu* target, and later repaired by homologous recombination. The second DNA nick probably occurred 2 bp downstream compared to the original insertion, and thus the first two nucleotides were not carried during the recombination event. See more details in Figure 9.



**Figure 6** (A) Position of *GGTLA* within the block structure of the LCR22s. Each of the LCR22s is ordered with respect to the centromere of chromosome 22q11.2. The *GGTLA* (green) gene is shown in its proper transcription orientation. The functional *GGTLA* locus is in LCR22-7. (B) Recombination events for *GGTLA* in LCR22-7 to form products in LCR22-5 and LCR20. The different recombination events in the different *Alu* elements shaping LCR22-5 (19661038–19665200, top; 19692592–19699596) and LCR20 (chr 20:23944266–23949403) are shown. Examination of the *GGTLA* intron 1 in LCR22-7 revealed duplicated copies on LCR22-8 (unrearranged), LCR22-5, and LCR20. We found rearrangements in LCR22-5 and LCR20. For LCR22-5, a single breakpoint within *Alu* D5 was responsible for creating the two reciprocal copies, one in the proximal end of LCR22-5 and one at the distal end of LCR22-5. Both form the borders of the LCR22. A different breakpoint, in *Alu* D4, was responsible for shaping the border of LCR20.

The *GGTLA* locus between exons 1 and 2 contains two *Alu* elements, which mediate rearrangements, termed *Alu* D4 and D5 (black-filled boxes; Figs. 6B, 7A,B). We found that there was a split in the sequence of the *GGTLA* locus within the first intron, one half creating the proximal end of LCR22-5 and one half creating the distal end of LCR22-5 (Figs. 6A,B, 7A). This event was important in shaping the structure of this LCR22. The data are consistent with a single breakpoint in one *Alu*, *Alu* D5, creating reciprocal copies of the *GGTLA* locus (Fig. 7C; Suppl. Fig. 7). The copies of *Alu* D5 in the two duplicated products in LCR22-5 are termed *Alu* D5c and D5e (Fig. 7A). Sequences proximal (left) to *Alu* D5c and the distal monomer of this *Alu* are present in the proximal end of LCR22-5, whereas sequences on the 3' side of the *Alu* are missing from LCR22-5 and represent non-LCR22 sequences (black bar, Fig. 6B). For the distal part of LCR22-5, sequences proximal (left) to *Alu* D5e and comprising the first monomer of *Alu* D5 are non-LCR22 sequences, whereas sequences distal to the *Alu* D5e are similar to LCR22-7 sequences.

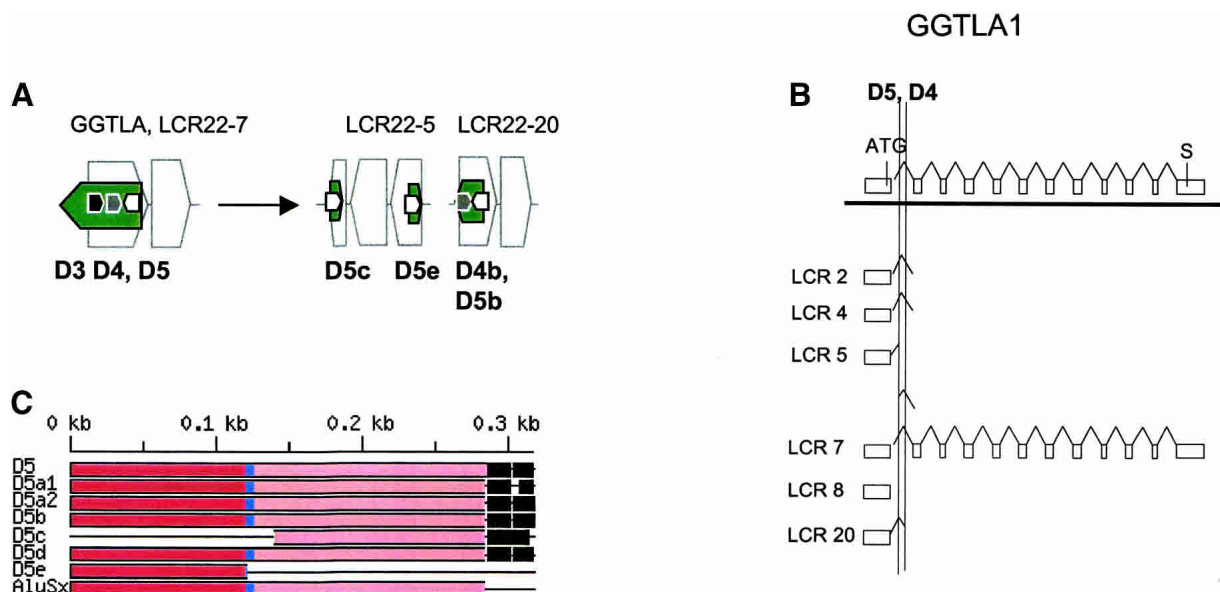
A rearrangement mediated by a different *Alu* element was involved in forming the copy of *GGTLA* on chromosome 20 (Fig. 6B). Again, the breakpoint junction formed the border of this LCR, suggesting that this rearrangement had a role in shaping the LCR20 structure itself (Fig. 7A). A breakpoint at the 3' end of *Alu* D4 in LCR22-7 was responsible for shaping LCR20. The sequence data suggest that an L1 endonuclease-mediated mechanism similar to that which occurred for *Alu* B2 and *Alu* C2 might have taken place for *Alu* D4 and its duplicated copies (Suppl. Fig. 6). *Alu* D4b is retained in chromosome 20, whereas sequences proximal are non-LCR22 sequences and sequences distal are LCR22 sequences. We examined the other side of the breakpoint upstream of the first exon of *GGTLA*. We found that breakpoints occurred on either side of an *Alu* Y (21342706–21343001). Thus,

*Alu* elements were responsible for breakpoints on both sides of the *GGTLA* gene duplications.

## DISCUSSION

### Segmental Duplication as a Model for Gene Rearrangements

Segmental duplications or LCRs have over 95% sequence identity, suggesting that they have evolved over the last 35 million years (Bailey et al. 2002b). FISH-mapping studies of metaphase chromosomes from apes and monkeys using 22q11.2 probes confirmed the presence of multiple copies in primate lineages (Shaikh et al. 2000; Bailey et al. 2002b). Thus, they have been quite active during primate speciation. As LCRs comprise 5% of the human genome (Bailey et al. 2002a) and many are associated with human disorders, we examined the LCRs on 22q11.2 to identify sequence relationships that could shed light on the mechanism(s) of duplications and chromosome rearrangements. By comparing copies of LCR22s with each other, we traced changes that have occurred during evolution. We found that the LCR22s are heavily rearranged. In most regions within the LCR22s, it was difficult to infer the ancestral state or trace the evolutionary processes that shaped them, with the exception of the known genes and truncated pseudogene copies within them. It was possible to do this because functional genes are under selective pressure against exon reshuffling; therefore, they serve as good estimators of the ancestral state of the loci. Duplicated copies of the genes are relatively unconstrained, and they can form unprocessed pseudogenes in which steps of their evolution can be traced compared to the ancestral copy. LCR genes therefore serve as a good model for gene rearrangements; analogous



**Figure 7** (A) Position of *Alu* elements involved in *GGTLA* rearrangements. The *GGTLA* gene (green shapes; exonic orientation shown) within the block structure of the LCR22s is shown. *Alu* elements D4 (gray) and D5 (white) are illustrated in the “+” or “-” orientation, associated with their *GGTLA* and gene copies. (B) *Alus* involved in breakpoints with respect to the genomic organization of *GGTLA*. The genomic organization of *GGTLA* was determined by comparing the cDNA sequence with the human genomic sequence by BLAST analysis. The position of *Alus* D4 and D5 with respect to the genomic organization of *GGTLA* is illustrated (dotted line). (C) Structure of *Alu* element D5 including its duplicated copies. A breakpoint in *Alu* D5 resulted in two reciprocal copies, D5c and D5e. For more details, see Supplemental Figure 7.

changes in genes would lead to loss of gene function and likely to genetic disorders and would be eliminated during evolution.

### *Alu*-Mediated Rearrangements Shape Pseudogenes on 22q11.2

In this report we present evidence for *Alu*-mediated rearrangements in shaping three known genes within LCR22s—*USP18*, *GGT*, and *GGTLA*—and part of the *BCR/DFZp434p211* complex. We found that four *Alu* elements (A1, A2, A3, and A4) were present at the breakpoints in the ancestral *USP18* locus and in the copies of *USP18* in three LCR22s: LCR22-2, -3a, and -4. In the case of two of them, A3 and A4, we found evidence of unequal crossover mechanisms between *Alu* elements likely responsible for the rearrangements. When we examined the duplication events of the *GGT* gene, we found that there were two independent breakpoints in this gene, one between exons 2 and 3 and another between exons 12 and 13. We found evidence of homology-directed misalignment, but a different mechanism was responsible for mediating the rearrangement. The breakpoints in the *Alu* elements involved in the rearrangements occurred not in the middle of *Alu* elements, as above for *USP18*, but at the end of *Alu* elements. Of further interest, one of the two genes involved in shaping the LCR22s, *IGSF3*, maps to 1p13.1 and is therefore in *trans* to *GGT* on 22q11.2.

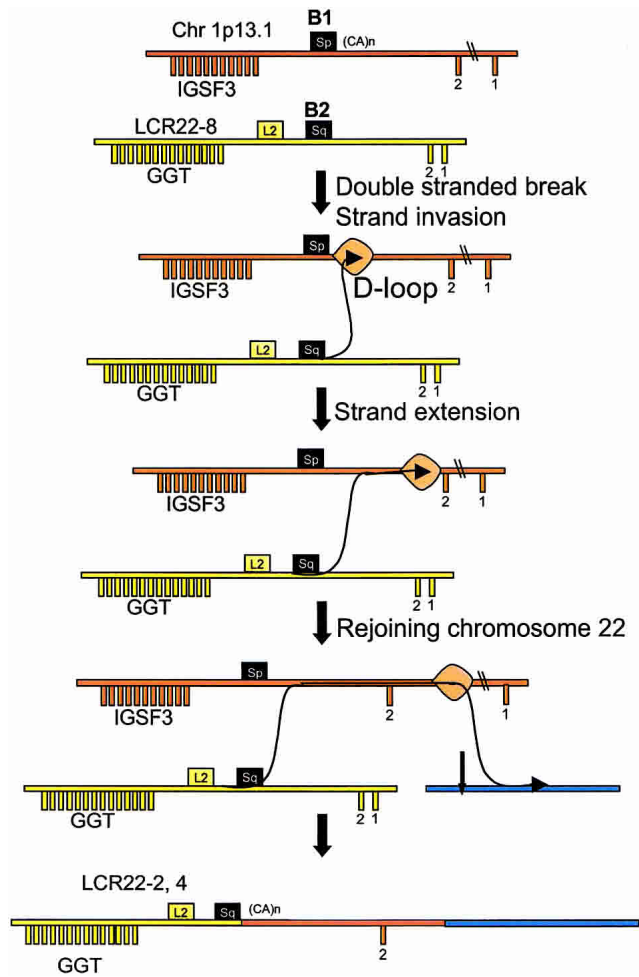
In this case, we propose that a copy of *IGSF3* and a copy of *GGT* were involved in an event that is analogous to the one described by Richardson et al. (1998). Figure 8 shows the model we propose for the interchromosomal recombination between *IGSF3* and *GGT* resulting in a chimeric fusion product. Homologous recombination (HR) is highest between repeats located on the same chromosome; however, recombination is also known to exist between nonhomologous chromosomes, suggesting that mammalian genomes have a mechanism scanning the entire genome (Baker et al. 1996; Richardson et al. 1998). Rearrangements induced by a double-stranded break (DSB) in cell culture preferentially lead to gene conversions, but transferral of larger DNA

segments from an unbroken chromosome to broken ones has occasionally been detected (Fig. 8; Richardson et al. 1998). If this is the case, we believe that the *IGSF3-GGT* fusion was created in meiosis by a replication-dependent mechanism similar to the one proposed by Richardson et al. (1998). This is because in both cases, a transfer of a long DNA segment from chromosome 1 to chromosome 22 occurred without an apparent chromosomal aberration (translocation). The only difference is that in the present case, there was no selection mechanism to retain homologous sequences after rejoining on chromosome 22 (Fig. 8).

### High-Copy Repetitive Elements in Modifying Genome Architecture

In our analysis we detected apparent *Alu*-mediated rearrangements in LCR22 genes, thereby shaping their architecture during evolution. There are several potential factors regarding the reason(s) why *Alu* elements are more likely to stimulate duplications and rearrangements in gene-rich regions compared to other repeats, including age, copy number, genomic distribution, and structure. HR depends on the degree of similarity between two substrates. Young transposable elements (TEs) including primate-specific *Alu* are relatively similar to one another, due to the low number of base substitutions, and are more likely to stimulate HR.

The location and high copy number of *Alus* make them a good substrate for recombination. *Alus* are the most widespread class of TEs, with about one million copies in the genome (Lander et al. 2001). LINES (L1) are present in about 500,000 copies; LTR-retrotransposons, such as endogenous retroviruses (HERVs), are present in 440,000 copies (Lander et al. 2001). However, HERVs families are often very diverse and are present in low copy numbers (Rebase Update, Jurka 2000). Therefore, the mean distance between two similar HERV copies can be very large, meaning that they are not good substrates for recombination. Moreover, whereas *Alu* elements are more frequent in GC-



**Figure 8** A model of insertion of *IGSF3* into LCR22-2 and LCR22-4; interchromosomal recombination between *IGSF3* on chromosome 1 and *GGT* on chromosome 22 (see Fig. 6 in Richardson et al. 1998), explaining the mechanism by which recombination occurs on nonhomologous chromosomes, thereby avoiding crossovers which would lead to aberrant translocations. In this model, a breakpoint in chromosome 22 occurred, presumably at one end of misaligned *Alu* elements (black boxes). The broken ends from chromosome 22 then would invade the homologous sequence, the *Alu* (black box) on chromosome 1, forming a D-loop. The invading end would prime DNA synthesis, extending, in this case, a significant distance on chromosome 1. The process would involve the migration of the D-loop into nonhomologous sequences downstream of the region of homology (the *Alu*). At a further distance, the newly synthesized strand would rejoin chromosome 22 in a region of homology (or non-homology) between chromosomes 1 and 22. Thus, this model combines homologous recombination in the absence of a crossover with nonhomologous repair. It was proposed for mitotic rearrangements (Richardson et al. 1998), but could be envisioned for meiotic rearrangements as well.

and gene-rich DNA, LINES and the majority of HERV families are underrepresented there (Lander et al. 2001; Paces et al. 2002).

Structural reasons also result in *Alu* SINES being good candidates for recombination. The *Alu* genome structure is similar between families, and due to their short size, *Alus* often escape 5' truncation typical for LINES. Most HERVs are structurally rearranged, and about 85% of them are solo LTRs (Lander et al. 2001), products of LTR–LTR recombination (Mager and Goodchild 1989; Lander et al. 2001). In the case of LINES, most are 5'-truncated (Voliva et al. 1983; Lander et al. 2001), containing only the 3' terminal part, which is very different between L1 families (Smit et al. 1995; Jurka 2000). Like endogenous retrovi-

uses, there are not many closely spaced, highly similar L1 elements prone to recombination. However, *Alu* repeats are ~280 bp long, which seems to be sufficient for effective homologous recombination in mammalian cells (Rubnitz and Subramani 1984; Liskay et al. 1987; Waldman and Liskay 1988).

Indeed, the majority of human genetic disorders caused by homologous recombination between repetitive sequences are *Alu–Alu* recombinations (Deininger and Batzer 1999; Batzer and Deininger 2002; Kolomietz et al. 2002). When Deininger and Batzer reviewed such genetic disorders in 1999, they collected 49 cases of both somatic and germline events linked to *Alu* rearrangements, whereas there were only two cases of homologous recombination between L1 copies related to human diseases. There are examples of recombinations of other repetitive elements, such as HERV-mediated duplications of the AZFa region on the human Y chromosome compatible with male fertility (Bosch and Jobling 2003), but these are rare.

### Mechanism of *Alu*-Mediated Rearrangements

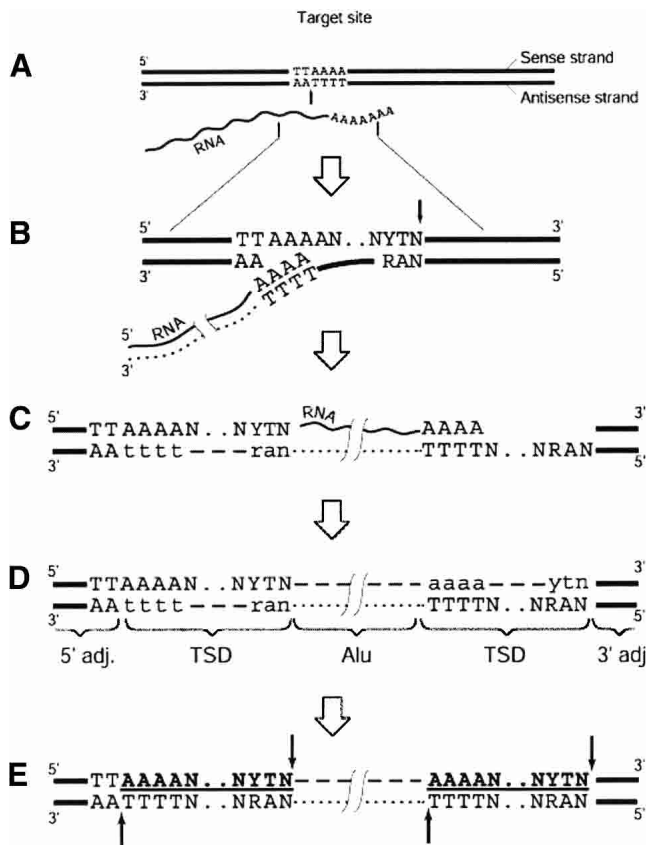
As described above, homology between *Alu* elements is likely responsible for misalignment of chromosomes during meiosis. In some of the cases, unequal crossovers were responsible for mediating the rearrangement and in others, the breakpoints were at the ends of *Alu* elements. In this context it should be noted that *Alu* elements are flanked by retrotransposon target-site duplications (TSDs) containing TTTTAA-like sequence motifs (Jurka 1997). A possible stimulus for these may derive from revisiting the same targets by the L1-encoded endonuclease capable of nicking specific DNA targets (Feng et al. 1996), leading to recombinogenic single- or even double-strand breaks (Fig. 9). In fact, *Alu* elements are substrates for L1-mediated retrotransposition (Cost et al. 2002).

Our hypothesis about the revisiting of *Alu* targets by L1 endonuclease, shown as a model in Figure 9, may explain the occurrence of full-length *Alu* elements within the breakpoints of LCR22 rearrangements. The *Alu* target sequence is located at the 5' end of *Alu* insertions (targets are also partially duplicated on 3' flanks). Additional cleavage of the target by L1 endonuclease would preferentially occur at the targets located at the 5' and 3' flanks, but not inside, *Alu* insertions. Therefore, the L1 endonuclease may be viewed as an additional enzyme capable of inducing DNA breaks, thus inducing genomic instabilities. The utilization of L1 endonuclease in *Alu* mobilization has been directly demonstrated in vitro (Cost et al. 2002), supporting our hypothesis.

In addition to its role as a target site, the TTTTAA-like sequences also harbor potentially kinkable DNA sites (Jurka et al. 1998). Such motifs are associated with rearrangements of dispersed elements in pericentromeric  $\alpha$ -satellites (Mashkova et al. 2001). Such kinkable sites associated with TSDs may therefore also represent focal points for recombination, as observed in humans and other organisms (Mashkova et al. 2001).

### LCR22 Blocks and *Alu* Elements

In this study, we obtained many pieces of sequence evidence implicating *Alu* elements in the shuffling of LCR22 genes and their duplicated copies, suggesting that this is not a random event. Besides the shuffling of exons, some of the *Alu* elements coincided with the positions of several junctions between LCR22 blocks or between LCR22 and non-LCR22 sequences, implicating them in shaping the LCR22 blocks themselves. On the other hand, some of the *Alus* involved in the rearrangements we describe were present in the middle of LCR22 blocks, suggesting that different, non-*Alu*-mediated mechanisms were responsible for duplicating or shaping those blocks. It is not surprising that



**Figure 9** Model of *Alu* integration and generation of breakpoint near integrated *Alu*. This is based upon the B2, C2, and D4 rearrangements. (A) Enzymatic nicking in the presence of RNA indicated by vertical black arrow. (B) Synthesis of cDNA, indicated by dotted line, and formation of a second nick, indicated by black arrow on the opposite strand. (C) Completion of reverse transcription and DNA-dependent DNA synthesis, indicated by a dashed line and the lowercase letters, followed by ligation. (D) Elimination of RNA and synthesis of the second DNA strand. The integrated *Alu* element is surrounded by the target-site duplications (TSDs), usually 15–16-bp long. TSDs are marked in boldface and underlined. (E) Potential sites for secondary attacks by the L1 endonuclease, in 5' and 3' duplicated targets, are indicated by the black arrows. The 5' flanking sequence contains an intact target TTA AAA N . . N Y T N; the 3' duplicated target lacks the first two nucleotides (typically TT). Modified from Jurka (1997).

several mechanisms could shape the architecture of the human genome. In fact, some borders of LCR22 blocks or the junction between LCR22 sequences and non-LCR22 sequences did not harbor *Alu* elements. To be more precise, *Alus* were at all the borders for *USP18*, *GGT*, and *GGTLA*, but they were at only one border for *BCR*. However, multiple evolutionary steps might be masked when only human sequence is examined. This is because the original breakpoints and junctions may have already been lost during primate speciation. Another feature is the complex nature of the LCR22s, genes, pseudogenes, and predicted genes. This is particularly true for *BCR* and the predicted gene *DKFZp434p211*, which are intertwined (Bailey et al. 2002b). As mentioned, we did not detect *Alus* at the 5' truncation breakpoints for *BCR*, but we did find them at the 3' truncations. This suggests either multiple mechanisms or that some of the original rearrangement endpoints have been lost. Nonetheless, we believe that *Alu*-mediated rearrangements have shaped a significant portion of the genome architecture of LCRs during evolution, but

that it may be necessary to examine nonhuman primate species to trace all of the steps.

## Summary

The ability to trace the products of recombination within the sequence of the human genome has provided us with a unique opportunity to identify the mechanisms responsible for shaping the architecture of the human genome, particularly segmental duplications, large deletions, and interchromosomal recombination during evolution. The availability of individuals with chromosome rearrangement disorders provides an additional opportunity to understand recombination mechanisms in a single meiosis. It is possible that some of the same mechanisms are responsible for both types of events.

## METHODS

### Identification of LCR22-2 and LCR22-4

We previously generated physical maps of LCR22-2 and LCR22-4 and constructed a minimal tiling path of genomic clones across each LCR [LCR22-2, AC008079 (BAC 519D21), AC008132 (PAC 99506), and AC008103 (PAC 699J1)]; [LCR22-4, AC008018 (BAC 379N11), AC009288 (PAC 413M7) Dunham et al. 1999; Edelman et al. 1999a]. We compiled the sequences of the LCR22-2 and the LCR22-4 clones in the UCSC browser into two separate contigs, termed LCR22-2 and LCR22-4. We then removed the high-copy repetitive elements in each contig, using RepeatMasker (<http://woody.embl-heidelberg.de/repeatmask/>). We then used the two contigs as a reference to identify other LCR22 sequences among the clones that comprise the minimal tiling path across chromosome 22q11.2 from 14.9–22.6 Mb, using miropeats software (Parsons 1995; <http://www.genome.ou.edu/>). We chose the clones from those assembled in the UCSC browser [June 2002 assembly (hg11) of the April 2002 sequence freeze].

### Identification of LCR22 Genes

We first performed a MegaBLAST analysis (Altschul et al. 1990; <http://www.ncbi.nlm.nih.gov/blast/>) on the LCR22 sequences to identify genes and pseudogenes that might lie within them. Next, we performed a BLASTnr analysis using the known genes or gene fragments that map to the LCR22s. We compared this analysis to recent annotations of the chromosome 22 genes and pseudogenes (Bailey et al. 2002b; Collins et al. 2003). To define the genomic organization of the genes, we subjected the cDNA for *USP18* (GenBank acc. NM\_017414), *E2F6* (GenBank acc. NM\_001952), *BCR* (GenBank acc. NM\_004327), *DKFZp434p211* (GenBank acc. NM\_014549), *GGTLA* (GenBank acc. NM\_004121), *GGT* (GenBank acc. J04131), and *IGSF3* (GenBank acc. NM\_001542) to a BLAST 2 sequences analysis (Tatusova and Madden 1999) with each of the LCR22 clones. We compared the genomic organization to that in the public browsers (Ensembl; <http://www.ensembl.org/>; UCSC browser).

### Identification of LCR22 Breakpoint Junctions

To identify the LCR22 breakpoint junctions containing the substrates and products of recombination, we used the UCSC browser (June 2002 assembly) to identify the functional loci of the genes. The *USP18* gene maps to positions 15573184–15600410 (size, 27,227 bp) on chromosome 22; *GGT* is at 21695307–21721084 (size, 25,778 bp); *GGTLA* is at 21311766–21337166 (size, 25,401 bp), and *BCR* is at 20221386–20356809 (size, 135,424 bp). BLAT analysis pinpointed the intervals harboring the breakpoints at the site of transposition (Kent 2002). We then integrated the architectural features (genes, pseudogenes, predicted genes, high-copy repeated elements, and simple sequence repeats) from the UCSC browser tracks with respect to the position of the breakpoints in the substrates of recombination and the breakpoint junction in the products of recombination.

## Northern Blot Hybridization

We generated probes by polymerase chain reaction (PCR) and purified them with Qiaquick Gel Extraction (QIAGEN). The following primer pairs were used for PCR amplification: *BCR* F (5'-3') TGACTGACAGCTGGTCTTGT, *BCR* R TCAGGCCTGGACTC TGAGA, *GGT1* F ATTTATTGTGCTGCTCTGCTG, *GGT1* R GCAAGCCATCGTCCGCAC, *GGT1A1* F TCGATCCATCTTCGT GTCTG, *GGT1A1* R GGTCGAGAGAGACCACA, *USP18* F TCATTTTCCATTCCGTTCC, and *USP18* R AAATACCCCCTGC CACTGAC. We labeled the probes with  $\alpha^{32}\text{P}$ -dCTP through random priming using Rediprime II (Amersham) and column cleaned them. The Northern Blots (Clontech; MTN1 blots) were prehybridized for 1 h at 42°C in UltraHyb solution (Ambion) and hybridized overnight at 42°C in the same solution. We washed the filters twice with 2x SSC 0.1% SDS for 20 min at room temperature, twice with 1x SSC 0.1% SDS for 20 min at room temperature, and twice with 0.1x SSC 0.1% SDS for 20 min at 42°C. The only exception to these washes was for the *GGT1A1* blot, which we washed twice with 2x SSC 0.1% SDS for 20 min at room temperature, twice with 1x SSC 0.1% SDS for 20 min at 42°C, and twice with 0.1x SSC 0.1% SDS for 20 min at 65°C. The filters were exposed to Kodak Ultrasensitive film X-OMAT AR for 1–3 d (6 h–overnight) at –80°C with intensifying screens.

## Low-Stringency Fluorescence In Situ Hybridization

We cultured the lymphoblastoid cell lines according to standard cytogenetic laboratory procedures and prepared slides with metaphase chromosomes. We chose BAC clones AC008132 and AC009288 because they contain LCR22-2 and LCR22-4 sequences, respectively. We isolated the DNA by a standard lysis by alkali procedure, and we labeled probes adjacent to the low-copy repeats with digoxigenin by nick-translation. Probes labeled in biotin were used as a control for hybridization- and identification-specific chromosomes. We then performed FISH as described (Shaffer et al. 1997). We viewed cells with a Zeiss Axioplan 2 fluorescence microscope equipped with a triple-band pass filter that allows multiple colors to be visualized simultaneously. We captured and stored digital images using a MacProbe 4.3/Power Macintosh G4 system (Applied Imaging) and printed images using a Tektronix Phaser 750.

## ACKNOWLEDGMENTS

We thank Drs. Gary Swergold, John Grealley, and Jack Lenz for providing insight into the models for *Alu*-mediated recombination. We appreciate the efforts of Aaron Theisen, Washington State University for his careful editing of the manuscript. This work is supported by the MOD (1-FY00-768; B.E.M.) and NIH (1 PO-1 HD 39420-01; B.E.M. and L.G.S.; and 5 P01 HD34980-05; B.E.M.).

The publication costs of this article were defrayed in part by payment of page charges. This article must therefore be hereby marked "advertisement" in accordance with 18 USC section 1734 solely to indicate this fact.

## REFERENCES

- Altschul, S.F., Gish, W., Miller, W., Myers, E.W., and Lipman, D.J. 1990. Basic local alignment search tool. *J. Mol. Biol.* **215**: 403–410.
- Bailey, J.A., Gu, Z., Clark, R.A., Reinert, K., Samonte, R.V., Schwartz, S., Adams, M.D., Myers, E.W., Li, P.W., and Eichler, E.E. 2002a. Recent segmental duplications in the human genome. *Science* **297**: 1003–1007.
- Bailey, J.A., Yavor, A.M., Viggiano, L., Misceo, D., Horvath, J.E., Archidiacono, N., Schwartz, S., Rocchi, M., and Eichler, E.E. 2002b. Human-specific duplication and mosaic transcripts: The recent paralogous structure of chromosome 22. *Am. J. Hum. Genet.* **70**: 83–100.
- Baker, M.D., Read, L.R., Beatty, B.G., and Ng, P. 1996. Requirements for ectopic homologous recombination in mammalian somatic cells. *Mol. Cell. Biol.* **16**: 7122–7132.
- Batzer, M.A. and Deininger, P.L. 2002. *Alu* repeats and human genomic diversity. *Nat. Rev. Genet.* **3**: 370–379.
- Bosch, E. and Jobling, M.A. 2003. Duplications of the AZFa region of the human Y chromosome are mediated by homologous recombination between HERVs and are compatible with male fertility. *Hum. Mol. Genet.* **12**: 341–347.
- Cheung, V.G., Nowak, N., Jang, W., Kirsch, I.R., Zhao, S., Chen, X.N., Furey, T.S., Kim, U.J., Kuo, W.L., Olivier, M., et al. 2001. Integration of cytogenetic landmarks into the draft sequence of the human genome. *Nature* **409**: 953–958.
- Collins, J.E., Goward, M.E., Cole, C.G., Smink, L.J., Huckle, E.J., Knowles, S., Bye, J.M., Beare, D.M., and Dunham, I. 2003. Reevaluating human gene annotation: A second-generation analysis of chromosome 22. *Genome Res.* **13**: 27–36.
- Cost G.J., Feng Q., Jacquier A., and Boeke J.D. 2002. Human L1 element target-primed reverse transcription in vitro. *EMBO J.* **21**: 5899–5910.
- Courseaux, A., Richard, F., Grosgeorge, J., Ortola, C., Viale, A., Turc-Carel, C., Dutrillaux, B., Gaudray, P., and Nahon, J.L. 2003. Segmental duplications in euchromatic regions of human chromosome 5: A source of evolutionary instability and transcriptional innovation. *Genome Res.* **13**: 369–381.
- Deininger, P.L. and Batzer, M.A. 1999. *Alu* repeats and human disease. *Mol. Genet. Metab.* **67**: 183–193.
- Duncan, C., Biro, P.A., Choudary, P.V., Elder, J.T., Wang, R.R., Forget, B.G., de Riel, J.K., and Wiessman, S.M. 1979. RNA polymerase III transcriptional units are interspersed among human non- $\alpha$ -globin genes. *Proc. Natl. Acad. Sci.* **76**: 5095–5099.
- Dunham, I., Shimizu, N., Roe, B.A., Chissoe, S., Hunt, A.R., Collins, J.E., Bruskiewich, R., Beare, D.M., Clamp, M., Smink, L.J., et al. 1999. The DNA sequence of human chromosome 22. *Nature* **402**: 489–495.
- Edelmann, L., Pandita, R.K., and Morrow, B.E. 1999a. Low-copy repeats mediate the common 3-Mb deletion in patients with velo-cardio-facial syndrome. *Am. J. Hum. Genet.* **64**: 1076–1086.
- Edelmann, L., Pandita, R.K., Spiteri, E., Funke, B., Goldberg, R., Palanisamy, N., Chaganti, R.S., Magenis, E., Shprintzen, R.J., and Morrow, B.E. 1999b. A common molecular basis for rearrangement disorders on chromosome 22q11. *Hum. Mol. Genet.* **8**: 1157–1167.
- Feng, Q., Moran, J.V., Kazazian Jr., H.H., and Boeke, J.D. 1996. Human L1 retrotransposon encodes a conserved endonuclease required for retrotransposition. *Cell* **87**: 905–916.
- Heisterkamp, N. and Groffen, J. 1988. Duplication of the *BCR* and  $\gamma$ -glutamyl transpeptidase genes. *Nucleic Acids Res.* **16**: 8045–8056.
- Heisterkamp, N., Stam, K., Groffen, J., de Klein, A., and Grosveld, G. 1985. Structural organization of the *BCR* gene and its role in the Ph' translocation. *Nature* **315**: 758–761.
- Heisterkamp, N., Rajpert-De Meyts, E., Uribe, L., Forman, H.J., and Groffen, J. 1991. Identification of a human  $\gamma$ -glutamyl cleaving enzyme related to, but distinct from,  $\gamma$ -glutamyl transpeptidase. *Proc. Natl. Acad. Sci.* **88**: 6303–6307.
- Jurka, J. 1997. Sequence patterns indicate an enzymatic involvement in integration of mammalian retroposons. *Proc. Natl. Acad. Sci.* **94**: 1872–1877.
- Jurka, J. 2000. Repbase update: A database and an electronic journal of repetitive elements. *Trends Genet.* **16**: 418–420.
- Jurka, J. and Pethiyagoda, C. 1995. Simple repetitive DNA sequences from primates: Compilation and analysis. *J. Mol. Evol.* **40**: 120–126.
- Jurka, J., Klonowski, P., and Trifonov, E.N. 1998. Mammalian retroposons integrate at kinkable DNA sites. *J. Biomol. Struct. Dyn.* **15**: 717–721.
- Kent, W.J. 2002. BLAT—The BLAST-like alignment tool. *Genome Res.* **12**: 656–664.
- Kolomietz, E., Meyn, M.S., Pandita, A., and Squire, J.A. 2002. The role of *Alu* repeat clusters as mediators of recurrent chromosomal aberrations in tumors. *Genes Chromosomes Cancer* **35**: 97–112.
- Lander, E.S., Linton, L.M., Birren, B., Nusbaum, C., Zody, M.C., Baldwin, J., Devon, K., Dewar, K., Doyle, M., FitzHugh, W., et al. 2001. Initial sequencing and analysis of the human genome. *Nature* **409**: 860–921.
- Liskay, R.M., Letsou, A., and Stachelek, J.L. 1987. Homology requirement for efficient gene conversion between duplicated chromosomal sequences in mammalian cells. *Genetics* **115**: 161–167.
- Mager, D.L. and Goodchild, N.L. 1989. Homologous recombination between the LTRs of a human retrovirus-like element causes a 5-kb deletion in two siblings. *Am. J. Hum. Genet.* **45**: 848–854.
- Mashkova, T.D., Oparina, N.Y., Lacroix, M.H., Fedorova, L.I., Tumeneva, I.G., Zinovieva, O.L., and Kisselev, L.L. 2001. Structural rearrangements and insertions of dispersed elements in pericentromeric  $\alpha$  satellites occur preferentially at kinkable DNA sites. *J. Mol. Biol.* **305**: 33–48.
- Morris, C., Courtay, C., Geurts van Kessel, A., ten Hoeve, J., Heisterkamp, N., and Groffen, J. 1993. Localization of a  $\gamma$ -glutamyl-transferase-related gene family on chromosome 22. *Hum. Genet.* **91**: 31–36.
- Paces, J., Pavlicek, A., and Paces, V. 2002. HERVD: Database of human endogenous retroviruses. *Nucleic Acids Res.* **30**: 205–206.
- Parsons, J.D. 1995. Miropeats: Graphical DNA sequence comparisons.

- Comput. Appl. Biosci.* **11**: 615–619.
- Potocki, L., Chen, K.S., Park, S.S., Osterholm, D.E., Withers, M.A., Kimonis, V., Summers, A.M., Meschino, W.S., Anyane-Yeboah, K., Kashork, C.D., et al. 2000. Molecular mechanism for duplication 17p11.2—The homologous recombination reciprocal of the Smith-Magenis microdeletion. *Nat. Genet.* **24**: 84–87.
- Rajpert-De Meyts, E., Heisterkamp, N., and Groffen, J. 1988. Cloning and nucleotide sequence of human  $\gamma$ -glutamyl transpeptidase. *Proc. Natl. Acad. Sci.* **85**: 8840–8844.
- Richardson, C., Moynahan, M.E., and Jasin M. 1998. Double-strand break repair by interchromosomal recombination: Suppression of chromosomal translocations. *Genes & Dev.* **12**: 3831–3842.
- Rubnitz, J. and Subramani, S. 1984. The minimum amount of homology required for homologous recombination in mammalian cells. *Mol. Cell. Biol.* **4**: 2253–2258.
- Schwer, H., Liu, L.Q., Zhou, L., Little, M.T., Pan, Z., Hetherington, C.J., and Zhang, D.E. 2000. Cloning and characterization of a novel human ubiquitin-specific protease, a homologue of murine UBP43 (USP18). *Genomics* **65**: 44–52.
- Shaffer, L.G., Kennedy, G.M., Spikes, A.S., and Lupski, J.R. 1997. Diagnosis of CMT1A duplications and HNPP deletions by interphase FISH: Implications for testing in the cytogenetics laboratory. *Am. J. Med. Genet.* **69**: 325–331.
- Shaikh, T.H., Kurahashi, H., Saitta, S.C., O'Hare, A.M., Hu, P., Roe, B.A., Driscoll, D.A., McDonald-McGinn, D.M., Zackai, E.H., Budarf, M.L., et al. 2000. Chromosome 22-specific low copy repeats and the 22q11.2 deletion syndrome: Genomic organization and deletion endpoint analysis. *Hum. Mol. Genet.* **9**: 489–501.
- Smit, A.F., Toth, G., Riggs, A.D., and Jurka, J. 1995. Ancestral, mammalian-wide subfamilies of LINE-1 repetitive sequences. *J. Mol. Biol.* **246**: 401–417.
- Stankiewicz, P. and Lupski, J.R. 2002. Genome architecture, rearrangements and genomic disorders. *Trends Genet.* **18**: 74–82.
- Tatusova, T.A. and Madden, T.L. 1999. BLAST 2 Sequences, a new tool for comparing protein and nucleotide sequences. *FEMS Microbiol. Lett.* **174**: 247–250.
- Voliva, C.F., Jahn, C.L., Comer, M.B., Hutchison III, C.A., and Edgell, M.H. 1983. The L1Md long interspersed repeat family in the mouse: Almost all examples are truncated at one end. *Nucleic Acids Res.* **11**: 8847–8859.
- Waldman, A.S. and Liskay, R.M. 1988. Dependence of intrachromosomal recombination in mammalian cells on uninterrupted homology. *Mol. Cell. Biol.* **8**: 5350–5357.
- Zackai, E.H. and Emanuel, B.S. 1980. Site-specific reciprocal translocation, t(11;22) (q23;q11), in several unrelated families with 3:1 meiotic disjunction. *Am. J. Med. Genet.* **7**: 507–521.

Received May 16, 2003; accepted in revised form September 23, 2003.