



## Whole Genome Comparison of *Campylobacter jejuni* Human Isolates Using a Low-Cost Microarray Reveals Extensive Genetic Diversity

Nick Dorrell, Joseph A. Mangan, Kenneth G. Laing, et al.

*Genome Res.* 2001 11: 1706-1715

Access the most recent version at doi:[10.1101/gr.185801](https://doi.org/10.1101/gr.185801)

---

### License

#### Email Alerting Service

Receive free email alerts when new articles cite this article - sign up in the box at the top right corner of the article or [click here](#).

---

To subscribe to *Genome Research* go to:  
<https://genome.cshlp.org/subscriptions>

---

Cold Spring Harbor Laboratory Press

# Whole Genome Comparison of *Campylobacter jejuni* Human Isolates Using a Low-Cost Microarray Reveals Extensive Genetic Diversity

Nick Dorrell,<sup>1,4</sup> Joseph A. Mangan,<sup>2,4</sup> Kenneth G. Laing,<sup>2</sup> Jason Hinds,<sup>2</sup> Dennis Linton,<sup>1</sup> Hasan Al-Ghusein,<sup>2</sup> Bart G. Barrell,<sup>3</sup> Julian Parkhill,<sup>3</sup> Neil G. Stoker,<sup>1</sup> Andrey V. Karlyshev,<sup>1</sup> Philip D. Butcher,<sup>2</sup> and Brendan W. Wren<sup>1,5</sup>

<sup>1</sup>Department of Infectious and Tropical Diseases, London School of Hygiene and Tropical Medicine, London WC1E 7HT, UK;

<sup>2</sup>Department of Medical Microbiology, St. George's Hospital Medical School, London SW17 0RE, UK; <sup>3</sup>The Sanger Centre, Wellcome Trust Genome Campus, Hinxton, Cambridge CB10 1SA, UK

*Campylobacter jejuni* is the leading cause of bacterial food-borne diarrhoeal disease throughout the world, and yet is still a poorly understood pathogen. Whole genome microarray comparisons of 11 *C. jejuni* strains of diverse origin identified genes in up to 30 NCTC III68 loci ranging from 0.7 to 18.7 kb that are either absent or highly divergent in these isolates. Many of these regions are associated with the biosynthesis of surface structures including flagella, lipo-oligosaccharide, and the newly identified capsule. Other strain-variable genes of known function include those responsible for iron acquisition, DNA restriction/modification, and sialylation. In fact, at least 21% of genes in the sequenced strain appear dispensable as they are absent or highly divergent in one or more of the isolates tested, thus defining 1300 *C. jejuni* core genes. Such core genes contribute mainly to metabolic, biosynthetic, cellular, and regulatory processes, but many virulence determinants are also conserved. Comparison of the capsule biosynthesis locus revealed conservation of all the genes in this region in strains with the same Penner serotype as strain NCTC III68. By contrast, between 5 and 17 NCTC III68 genes in this region are either absent or highly divergent in strains of a different serotype from the sequenced strain, providing further evidence that the capsule accounts for Penner serotype specificity. These studies reveal extensive genetic diversity among *C. jejuni* strains and pave the way toward identifying correlates of pathogenicity and developing improved epidemiological tools for this problematic pathogen.

*Campylobacter jejuni* is the principal cause of human bacterial gastroenteritis worldwide (Blaser 1997). Disease outcomes from *C. jejuni* infection vary from mild, noninflammatory, self-limiting diarrhoea to severe, inflammatory, bloody diarrhoea lasting for several weeks (Wassenaar and Blaser 1999). In addition, *C. jejuni* is also associated with the development of the peripheral neuropathies Miller Fisher and Guillain-Barré (GBS) syndromes (Nachamkin et al. 1998), which further adds to the economic burden of *C. jejuni* infection (Buzby et al. 1997). Given the range of disease outcomes and the importance of *C. jejuni* as a major economic and social problem, it is surprising that the ecology, epidemiology, and, in particular, the pathogenesis of the organism are so poorly understood. This lack of understanding was the driving force for instigating the recently completed *C. jejuni* genome project (Parkhill et al. 2000).

The sequencing of the *C. jejuni* NCTC 11168 genome revealed few mechanisms by which the organism can generate genetic diversity. *C. jejuni* is almost unique among sequenced bacterial pathogens in that the NCTC 11168 genome

sequence contains no transposons, phage remnants, or insertion sequence elements and very few repeat sequences. However, several lines of evidence have indicated relative intra-specific genotypic and phenotypic diversity compared to other enteropathogens. For example, two serotyping schemes detect a wide variety of serotypes: the Penner heat-stable antigen typing scheme detects more than 60 serotypes (Penner and Hennessy 1980), whereas the Lior heat-labile antigen typing scheme recognizes >100 serotypes (Lior et al. 1982). Genotypic diversity has been shown by ribotyping, pulsed field gel electrophoresis, and several PCR-based techniques (Fayos et al. 1992; Lam et al. 1995; Hanninen et al. 1999; Kokotovic and On 1999). Unfortunately, these methods are unable to further characterize the genetic basis for this observed variability. Diversity between *C. jejuni* strains has also been observed at the phenotypic level, particularly for characteristics implicated in pathogenicity, such as adherence to and invasion of epithelial cell lines (Konkel and Joens 1989; Everest et al. 1992; Wooldridge and Ketley 1997), toxin production (Wassenaar 1997), serum resistance (Blaser et al. 1986), exopolysaccharide production (Karlyshev et al. 2000a), sialylation of LOS (Linton et al. 2000b), and the ability to colonize chicks (Korolik et al. 1998; Barrow and Page 2000).

The Penner serotyping system has been used worldwide for grouping *C. jejuni* strains for more than 20 years (Penner and Hennessy 1980). Important epidemiological correlations have been made on the basis of this typing system, including

<sup>4</sup>These authors contributed equally to this work.

<sup>5</sup>Corresponding author.

E-MAIL [brendan.wren@lshtm.ac.uk](mailto:brendan.wren@lshtm.ac.uk); FAX 44-20-7636-8739.

Article published on-line before print: *Genome Res.*, 10.1101/gr.185801.  
Article and publication are at <http://www.genome.org/cgi/doi/10.1101/gr.185801>.

the overrepresentation of serotype O:19 strains isolated in GBS patients (Yuki and Miyatake 1998) and a cluster of GBS cases linked with serotype O:41 (Prendergast et al. 1998). Problems associated with the Penner serotyping system include difficulty in standardizing preparation of antisera, the expense of specific sera, and a significant proportion of untypable strains. Surprisingly, despite the widespread use of the Penner serotyping system, the nature of the serotypic determinant was until recently unclear. Data now indicate that the heat-stable Penner serotyping antigen is the newly recognized capsular polysaccharide (Karlyshev et al. 2000a).

DNA microarrays have been used to compare interstrain, intraspecific variations in bacteria at the genomic level, referred to as genotyping. For example, to investigate the differences between *Mycobacterium tuberculosis*, *Mycobacterium bovis*, and the various BCG vaccine daughter strains, their genomic compositions were studied by comparative hybridization experiments using a *M. tuberculosis* H37Rv DNA microarray (Behr et al. 1999). These experiments highlighted many regions of the virulent *M. tuberculosis* H37Rv reference strain that were lacking in *M. bovis* and the BCG strains. More recently, use of a whole genome microarray from two sequenced strains revealed diversity among clinical isolates of the gastric pathogen *Helicobacter pylori*, which is closely related to *C. jejuni*. This study identified a class of candidate virulence genes by their coinheritance with the well-characterized *H. pylori* *cag* pathogenicity island (Salama et al. 2000).

To date there appears to be very little sequence diversity between housekeeping genes from different *C. jejuni* strains, particularly between human isolates (Dingle et al. 2001; Suerbaum et al. 2001). Genes that encode surface-exposed antigenic proteins are known to vary in sequence, presumably to evade the immune system. The flagellin structural genes *flaA* and *flaB* both have hypervariable regions that probably correspond to surface-exposed parts of the proteins. However, genes that encode other nonimmunogenic virulence factors appear to be closely conserved. For example, *OmpH1* and *Peb1A* are both surface exposed on the bacteria, but there does not appear to be the selection for diversity in the *ompH1* and *peb1A* genes that is seen with the flagellin structural genes (for review, see Meinersmann 2000). Furthermore, the NCTC 11168 genome contains very few repeat sequences (<1% of the genome) (Parkhill et al. 2000). Therefore, *C. jejuni* would appear to be an ideal organism to study by genotyping.

One of the drawbacks of microarray technology is the initial high cost involved in the synthesis of gene-specific primers to amplify each gene in a genome. The 10-fold sequencing of the *C. jejuni* NCTC 11168 genome provided the useful by-product of an ordered library of sequence-defined pUC18 clones covering the entire genome (Parkhill et al. 2000). Optimum clones for all putative coding sequences (CDS) were selected, and PCR products were amplified from these clones using a single pair of vector primers. These PCR products were spotted onto glass slides to produce a low-cost *C. jejuni* whole genome microarray. Although only 34.5% of the PCR products were gene-specific, this type of microarray is suitable for performing genotyping, where the data generated are qualitative rather than quantitative. The aim of our study was to use this microarray to investigate the extent of genetic diversity among *C. jejuni* isolates, and more specifically, the relationship between capsule locus variability and Penner serotype.

## RESULTS

### Construction of the *C. jejuni* NCTC 11168 Whole Genome DNA Microarray

A whole genome DNA microarray was constructed containing an element representing each of the 1731 CDSs originally identified from the genome sequence (J. Parkhill, unpubl.). The number of annotated CDSs in the *C. jejuni* NCTC 11168 genome was subsequently reduced to 1654 (Parkhill et al. 2000). The resulting 77 "nongenes" are therefore each flagged in the gene lists used in the analysis software as a "not annotated gene". The tiling program, designed to identify the optimum clone for each CDS from the ordered pUC18 plasmid library, identified clones containing a single gene fragment for 597 (34.5%) of the CDSs. For 613 (35.4%) of the CDSs, a further set of clones was identified with an adjacent gene fragment either upstream or downstream of the selected gene. The remaining 521 (30.1%) CDSs are represented by clones containing more than one gene fragment adjacent to the selected gene. The size range of the vector primer-amplified PCR products was 0.5 kb to 2.0 kb. Controls comprised the 5S, 16S, and 23S rRNA genes (with four serial fourfold dilutions of the 23S rRNA gene), the multiple cloning site of the pUC18 vector, and the human  $\beta$ -actin gene. The controls were printed along the top row of each of the 16 subgrids.

### General Features of Interstrain Whole Genome Hybridizations

The data generated are available on-line at <http://www.sghms.ac.uk/depts/medmicro/bugs/GR-1858>. One of the limitations of using a microarray generated using plasmid clones rather than gene-specific primers is the potential difficulty in interpreting the data owing to the presence of overlapping genes on the microarray. If a gene is absent, but is represented by a clone containing adjacent genes that are present, then the red/green hybridization signal intensity ratio may be raised above 0.5 and the gene subsequently scored as present. However, genes scored as absent or highly divergent should be accurate within the limits of array technology.

The results presented identify regions of the NCTC 11168 genome ranging from <0.5 kb to nearly 20 kb to which genomic DNA from one or more of the 11 test strains listed in Table 1 failed to hybridize. Table 1 also shows the percentage of NCTC 11168 genes to which genomic DNA from each strain failed to hybridize. Genes can therefore be identified that are absent or highly divergent in these strains. Such genome content data indicates that of the 11 strains analyzed, strains 81116 and P3 are most distantly related to NCTC 11168, whereas the recent clinical isolate PHLS03 is most closely related to the sequenced strain.

Figure 1 indicates the position of absent or highly divergent genes over the whole genome of each of the 11 isolates, assuming gene order conservation among strains. The complete lists of genes either absent or highly divergent in each of the 11 strains tested are also available on-line at <http://www.sghms.ac.uk/depts/medmicro/bugs/GR-1858>. Of the 1654 annotated genes, 1300 were common to all strains (core genes), with 354 genes missing from at least one strain (variable genes). As expected, conserved regions included genes for metabolic, biosynthetic, cellular, and regulatory processes, but also for several putative virulence determinants, including genes encoding the cytolethal distending toxin (Pickett et al. 1996), flagellar structural proteins (Wassenaar et al. 1991),

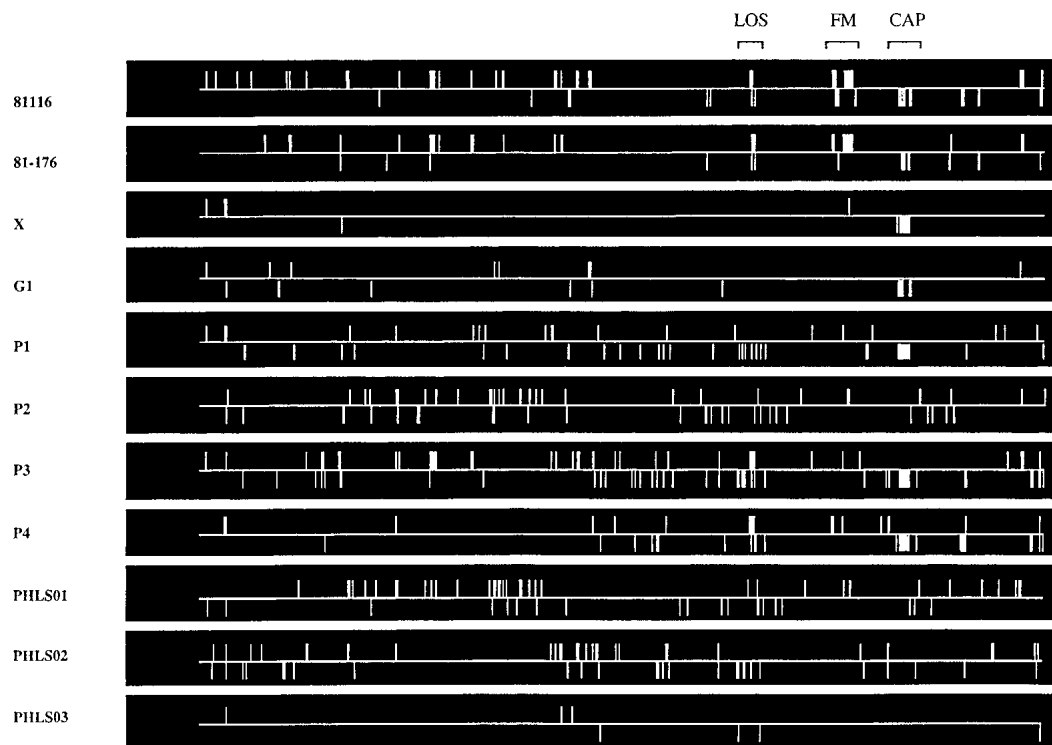
**TABLE 1.** *Campylobacter jejuni* Strains Used in This Study

Strain	Relevant characteristics and history	Penner serotype	% genes non-hybridized	Source/Reference
11168	Sequenced strain, human isolate (Worcester 1977)	O:2	0	NCTC 11168 <sup>a</sup>
81116	Human isolate, source: water (Chelmsford 1981)	O:6	6.95	NCTC 81116 <sup>b</sup>
81-176	Human isolate, source: raw milk (Minnesota 1981)	O:23/36	3.93	G. Perez-Perez <sup>c</sup>
X	Human isolate, gastroenteritis, source: poultry (London 1997)	UT <sup>d</sup>	1.27	A. Karlyshev <sup>e</sup>
G1	Human isolate, GBS <sup>f</sup>	O:1	1.21	N. Gregson <sup>g</sup>
P1	Penner serotype reference strain	O:1	3.69	NCTC 12500 <sup>h</sup>
P2	Penner serotype reference strain	O:2	3.69	NCTC 12501 <sup>h</sup>
P3	Penner serotype reference strain	O:3	6.95	NCTC 12502 <sup>h</sup>
P4	Penner serotype reference strain	O:4	3.87	NCTC 12561 <sup>h</sup>
PHLS01	Human isolate, phage type 35	O:2	3.51	PHLS (C0118480) <sup>h</sup>
PHLS02	Human isolate, phage type 1	O:2	3.39	PHLS (C0178110) <sup>h</sup>
PHLS03	Human isolate, phage type 44	O:2	0.54	PHLS (C0125990) <sup>h</sup>

<sup>a</sup>Nature Collection of Type Cultures, Colindale, London<sup>b</sup>Veterinary Laboratories Agency, Weybridge, UK<sup>c</sup>Vanderbilt University, Nashville, Tennessee<sup>d</sup>Untypeable<sup>e</sup>LSHTM, London UK<sup>f</sup>Strain from patient who later developed Guillain-Barré syndrome<sup>g</sup>Guy's Medical School, London<sup>h</sup>Public Health Laboratory Service, Colindale, London

phospholipase A (Grant et al. 1997), the PEB antigenic surface proteins (Pei et al. 1991), and proteins potentially involved in host pathogen interactions such as CiaB (Konkel et al. 1999), CadF (Konkel et al. 1997), and CheY (Yao et al. 1997). Variable genes of known function that are not involved in surface

structure include the iron acquisition siderophore receptor (Cj0178), which is absent or highly divergent in 81116 and 81-176, and the enterochelin uptake operon *ceuBCDE*, which is absent or highly divergent in strain PHLS02. The predicted DNA restriction and DNA modification systems in NCTC



**Figure 1** Comparison of the genomes of 11 different *Campylobacter jejuni* strains with the NCTC 11168 genome. Genes identified as absent by microarray hybridization analysis are indicated as a vertical line depicting the position of the gene in a linear representation of the 1.64-Mb NCTC 11168 genome from Cj0001 to Cj1654. Lines above the horizontal line indicate genes on the forward strand, and lines below indicate genes on the reverse strand. (LOS) Lipo-oligosaccharide biosynthesis locus, (FM) flagellar modification locus, and (CAP) capsule biosynthesis locus.

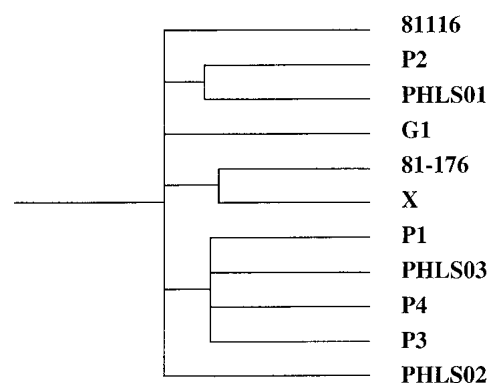
11168 appear to be particularly variable, with many of these systems absent or highly divergent in strains 81116, 81-176, X, P1, P2, P3, and P4 (Table 2).

Cluster analysis to compare the genome content of the 11 strains studied was performed (Fig. 2). Such analysis indicates that even though strains P2, PHLS01, PHLS02, and PHLS03 share the same serotype, the genome content of these strains is otherwise dissimilar.

### Variation in Surface Structures

Many of the *C. jejuni* NCTC 11168 genes absent or highly divergent in one or more strains are associated with the synthesis and/or modification of surface structures. Data for the three large gene clusters representing capsular polysaccharide biosynthesis (Cj1413–Cj1448), LOS biosynthesis (Cj1131–Cj1152), and the region involved in biosynthesis and post-translational modification of the flagellin subunits FlaA and FlaB (Cj1305–Cj1345) are represented in Figure 1. Strains 81116 and 81-176 lack much of the NCTC11168 flagellin modification locus, which is conserved in the other nine strains tested. This has been confirmed for strain 81116 by PCR analysis (A.V. Karlyshev, unpubl.). The capsule and LOS hybridization patterns for the 11 strains are detailed in Tables 3 and 4, respectively.

The *C. jejuni* capsular polysaccharide was recently identified as the serodeterminant of the Penner serotyping system (Karlyshev et al. 2000a). The organization of the *C. jejuni* capsule locus bears similarity to the *Escherichia coli* paradigm, in which conserved genes associated with transport of the polysaccharide (*kps* genes; see Table 3) flank a central region that in *E. coli* is the variable biosynthetic region involved in the generation of diverse polysaccharide structures (Roberts 1996). It was predicted that if this central region does indeed



**Figure 2** Cluster analysis performed using GeneSpring 3.2.12 software showing the relationship of all 11 *Campylobacter jejuni* strains studied to each other based on their genomic composition compared to the sequenced strain NCTC 11168.

contain the genes involved in *C. jejuni* capsular polysaccharide biosynthesis, then this region would vary between strains of different Penner serotypes (Karlyshev et al. 2000a). Indeed, the seven non-O:2 serotype strains revealed extensive diversity, with up to 17 NCTC 11168 genes absent or highly divergent from this central region (Table 3). A striking feature of the genome comparisons is the complete conservation of the 42.6-kb capsule biosynthesis locus in four strains with the same Penner serotype (O:2) as the sequenced strain (Table 3). This clearly indicates that this central biosynthetic region is responsible for the variation in capsular polysaccharide detected by the Penner serotyping system. As expected, the *kps* genes flanking the central cap-

**Table 2.** Divergence in Restriction/Modification Systems in *Campylobacter jejuni* Strains

Gene	Function <sup>a</sup>	Clone content (%)	Phase variable <sup>b</sup>	81116	81-176	X	G1	P1	P2	P3	P4	PHLS 01	PHLS 02	PHLS 03
<i>Cj0031</i>	type IIS restriction/modification enzyme, N-terminal half	<i>Cj0031</i> (31)	✓	+	+	+	+	+	+	+	+	+	+	+
<i>Cj0032</i>	type IIS restriction/modification enzyme, C-terminal half	<i>Cj0031</i> (8) <i>Cj0032</i> (95)	✓	–	+	–	+	–	+	(+)	–	+	+	(+)
<i>Cj0208</i>	DNA modification methylase	<i>Cj0207</i> (1) <i>Cj0208</i> (66)		+	+	+	+	+	+	+	+	+	+	+
<i>Cj0690</i>	possible restriction/modification enzyme	<i>Cj0690</i> (34)		–	+	+	+	+	(+)	+	+	+	+	+
<i>Cj0722</i>	DNA methylase	<i>Cj0721</i> (16) <i>Cj0722</i> (100) <i>Cj0723</i> (32)		+	+	+	+	+	(+)	+	+	(+)	+	+
<i>Cj1051</i>	restriction/modification enzyme	<i>Cj1051</i> (25)		+	–	+	+	+	–	–	+	+	+	(+)
<i>Cj1549</i>	type I restriction enzyme R protein	<i>Cj1549</i> (27)		–	+	+	+	+	+	+	–	+	+	+
<i>Cj1551</i>	type I restriction enzyme S protein	<i>Cj1551</i> (56)		–	+	+	+	+	+	+	–	+	+	+
<i>Cj1553</i>	type I restriction enzyme M protein	<i>Cj1553</i> (39)		+	+	+	+	+	+	+	–	+	+	+

A + or – indicates that the red/green hybridization signal intensity ratio is >0.5 or <0.5, respectively.

(+) Indicates the possibility that the gene may be absent or highly divergent even though the red/green hybridization signal intensity ratio is > 0.5 (see Methods).

<sup>a</sup>Putative gene function based on annotation (Parkhill et al. 2000).

<sup>b</sup>Genes contain intragenic homopolymeric tracts indicating potential phase variable expression (Parkhill et al. 2000).

Dorrell et al.

**Table 3.** Divergence in the 42.6 kb NCTC 11168 Capsule Biosynthetic Locus in the *Campylobacter jejuni* Strains Studied

Gene name	Function <sup>a</sup>	Clone content (%)	Phase variable <sup>b</sup>											PHLS 01	PHLS 02	PHLS 03
				81116	81-176	X	G1	P1	P2	P3	P4					
<i>Cj1413</i>	<i>kpsS</i>	<i>Cj1413</i> (67)		+	+	+	+	+	+	+	+	+	+	+	+	+
<i>Cj1414</i>	<i>kpsC</i>	<i>Cj1413</i> (16) <i>Cj1414</i> (50)		+	+	+	+	+	+	+	+	+	+	+	+	+
<i>Cj1415</i>	<i>cysC</i>	<i>Cj1414</i> (20) <i>Cj1415</i> (100) <i>Cj1416</i> (17) <i>Cj1416</i> (82)		(+)	+	+	+	+	+	+	+	+	+	+	+	+
<i>Cj1416</i>	sugar nucleotidyltransferase	<i>Cj1416</i> (22) <i>Cj1417</i> (98)		+	+	+	+	+	+	+	+	+	+	+	+	+
<i>Cj1417</i>	GMP synthetase	<i>Cj1418</i> (39)		+	+	+	+	+	+	+	+	+	+	+	+	+
<i>Cj1418</i>	phosphoenolpyruvate synthase	<i>Cj1418</i> (9) <i>Cj1419</i> (77)		+	+	+	+	+	+	+	+	+	+	+	+	+
<i>Cj1419</i>	methyltransferase	<i>Cj1418</i> (9) <i>Cj1419</i> (77)		+	+	+	+	+	+	+	+	+	+	+	+	+
<i>Cj1420</i>	unknown	<i>Cj1420</i> (73)	✓	+	+	+	+	+	+	+	+	+	(+)	+	+	+
<i>Cj1421</i>	sugar transferase	<i>Cj1421</i> (33)	✓	(+)	+	+	+	+	+	+	+	+	(+)	+	+	+
<i>Cj1422</i>	sugar transferase	<i>Cj1422</i> (89)	✓	-	+	-	+	+	+	+	+	(+)	-	+	+	+
<i>Cj1423</i>	sugar-phosphate nucleotidyltransferase	<i>Cj1423</i> (100) <i>Cj1424</i> (100) <i>Cj1425</i> (3)		-	(+)	(+)	+	+	+	+	+	(+)	(+)	+	(+)	+
<i>Cj1424</i>	<i>gmhA2</i>	<i>Cj1423</i> (22) <i>Cj1424</i> (100) <i>Cj1425</i> (4)		+	+	+	+	+	+	+	+	+	+	+	+	+
<i>Cj1425</i>	galactose kinase	<i>Cj1424</i> (22) <i>Cj1425</i> (100)		-	+	(+)	-	-	+	+	+	+	+	+	+	+
<i>Cj1426</i>	unknown	<i>Cj1425</i> (2) <i>Cj1426</i> (100) <i>Cj1427</i> (46) <i>Cj1427</i> (75)	✓	-	+	-	-	-	+	-	(+)	+	+	+	+	+
<i>Cj1427</i>	sugar-nucleotide epimerase/dehydratase	<i>Cj1427</i> (28) <i>Cj1428</i> (100) <i>Cj1429</i> (6)		-	+	-	+	+	+	+	(+)	+	+	+	+	+
<i>Cj1428</i>	fucose synthetase	<i>Cj1427</i> (28) <i>Cj1428</i> (100) <i>Cj1429</i> (6)		-	(+)	-	+	-	+	-	-	+	+	+	+	+
<i>Cj1429</i>	unknown	<i>Cj1428</i> (14) <i>Cj1429</i> (100) <i>Cj1430</i> (42) <i>Cj1429</i> (29) <i>Cj1430</i> (100)	✓	-	+	-	+	-	+	-	-	+	+	+	+	+
<i>Cj1430</i>	nucleotide-sugar epimerase/dehydratase	<i>Cj1430</i> (100) <i>Cj1431</i> (7) <i>Cj1431</i> (43)		+	+	+	+	+	+	+	+	+	+	+	+	+
<i>Cj1431</i>	glycosyltransferase	<i>Cj1431</i> (43) <i>Cj1432</i> (45)		-	-	-	-	+	+	-	-	+	+	+	+	+
<i>Cj1432</i>	glycosyltransferase	<i>Cj1432</i> (2) <i>Cj1433</i> (71)	✓	-	-	-	+	+	+	-	-	+	+	+	+	+
<i>Cj1433</i>	unknown	<i>Cj1432</i> (2) <i>Cj1433</i> (71)		-	-	-	+	+	+	-	-	+	+	+	+	+
<i>Cj1434</i>	galactosyltransferase	<i>Cj1434</i> (55) <i>Cj1435</i> (100) <i>Cj1436</i> (4)		-	+	-	+	+	+	+	(+)	-	+	+	+	+
<i>Cj1435</i>	phosphoserine phosphatase	<i>Cj1435</i> (100) <i>Cj1436</i> (4)		(+)	+	+	+	+	+	+	(+)	+	+	+	+	+
<i>Cj1436</i>	aminotransferase	<i>Cj1436</i> (89) <i>Cj1437</i> (84) <i>Cj1438</i> (2)		-	+	-	+	+	+	+	(+)	(+)	+	+	+	+
<i>Cj1437</i>	aminotransferase	<i>Cj1436</i> (89) <i>Cj1437</i> (84) <i>Cj1438</i> (2)		-	(+)	-	+	-	+	-	-	+	+	+	+	+
<i>Cj1438</i>	galactosyltransferase	<i>Cj1438</i> (42) <i>Cj1439</i> (75)		-	(+)	-	+	+	+	+	-	+	+	+	+	+
<i>Cj1439</i>	UDP-galactopyranose mutase	<i>Cj1438</i> (42) <i>Cj1439</i> (75)		-	-	-	+	-	+	-	-	+	+	+	+	+
<i>Cj1440</i>	galactosyltransferase	<i>Cj1440</i> (52) <i>Cj1441</i> (11) <i>Cj1441</i> (73)		-	(+)	-	+	(+)	+	-	-	+	+	+	+	+
<i>Cj1441</i>	<i>kfiD</i>	<i>Cj1440</i> (52) <i>Cj1441</i> (11) <i>Cj1441</i> (73)		-	-	-	+	+	+	-	-	+	+	+	+	+
<i>Cj1442</i>	glycosyltransferase	<i>Cj1442</i> (47) <i>Cj1443</i> (63) <i>Cj1444</i> (74) <i>Cj1445</i> (65) <i>Cj1447</i> (38)		+	+	+	-	+	(+)	+	+	(+)	+	+	+	+
<i>Cj1443</i>	<i>kpsF</i>	<i>Cj1442</i> (47) <i>Cj1443</i> (63) <i>Cj1444</i> (74) <i>Cj1445</i> (65) <i>Cj1447</i> (38)		+	+	+	+	+	+	+	+	+	+	+	+	+
<i>Cj1444</i>	<i>kpsD</i>	<i>Cj1442</i> (47) <i>Cj1443</i> (63) <i>Cj1444</i> (74) <i>Cj1445</i> (65) <i>Cj1447</i> (38)		+	+	+	+	+	+	+	+	+	+	+	+	+
<i>Cj1445</i>	<i>kpsE</i>	<i>Cj1442</i> (47) <i>Cj1443</i> (63) <i>Cj1444</i> (74) <i>Cj1445</i> (65) <i>Cj1447</i> (38)		+	+	+	+	+	+	+	+	+	+	+	+	+
<i>Cj1447</i>	<i>kpsT</i>	<i>Cj1445</i> (25) <i>Cj1447</i> (100) <i>Cj1448</i> (13) <i>Cj1447</i> (44) <i>Cj1448</i> (100)		+	+	+	+	+	+	(+)	+	+	(+)	+	+	+
<i>Cj1448</i>	<i>kpsM</i>	<i>Cj1445</i> (25) <i>Cj1447</i> (100) <i>Cj1448</i> (13) <i>Cj1447</i> (44) <i>Cj1448</i> (100)		+	+	(+)	(+)	+	+	+	+	+	+	+	+	+

A + or - indicates that the red/green hybridization signal intensity ratio is &gt;0.5 or &lt;0.5, respectively.

(+) indicates the possibility that the gene may be absent or highly divergent even though the red/green hybridization signal intensity ratio is &gt;0.5 (see Methods).

<sup>a</sup>Putative gene function based on annotation (Parkhill et al. 2000).<sup>b</sup>Genes contain intragenic homopolymeric tracts indicating potential phase variable expression (Parkhill et al. 2000).NB: *Cj1446* was originally designated a CDS, but was unannotated in the final genome annotation (Parkhill et al. 2000).

**Table 4.** Divergence in the 20.4 kb NCTC 11168 Lipo-oligosaccharide Biosynthetic Locus in the *Campylobacter jejuni* Strains Studied

Gene name	Function <sup>a</sup>	Clone content (%)	Phase variable <sup>b</sup>	81116	81-176	X	G1	P1	P2	P3	P4	PHLS 01	PHLS 02	PHLS 03
Cj1131	<i>galE</i>	Cj1131 (73)		+	+	+	+	+	+	+	+	+	+	+
Cj1132	unknown	Cj1132 (80)		+	+	+	+	+	+	+	+	+	+	+
Cj1133	<i>waaC</i>	Cj1133 (11)												
		Cj1132 (20)	(+)	+	(+)	(+)	+	(+)	+	+	-	+	+	
Cj1134	<i>htrB</i>	Cj1133 (100)												
		Cj1134 (19)		+	+	+	+	+	+	+	+	+	+	+
		Cj1134 (67)		+	+	+	+	+	+	+	+	+	+	+
Cj1135	glycosyltransferase	Cj1135 (4)												
		Cj1135 (53)		-	+	+	+	+	+	-	+	+	+	+
Cj1136	glycosyltransferase	Cj1136 (89)		-	(+)	+	+	+	+	-	-	+	+	+
		Cj1137 (3)												
Cj1137	unknown	Cj1136 (13)		-	(+)	+	+	-	(+)	(+)	-	+	(+)	+
		Cj1137 (100)												
		Cj1138 (18)												
Cj1138	galactosyltransferase	Cj1138 (67)		-	-	+	+	(+)	+	(+)	-	+	+	+
Cj1139	<i>wlaN<sup>c</sup></i>	Cj1138 (30)	✓	-	-	+	+	+	+	-	-	+	+	+
		Cj1139 (96)												
Cj1140	<i>cst</i>	Cj1140 (93)		-	-	+	+	+	+	(+)	-	+	+	+
Cj1141	<i>neuB<sup>d</sup></i>	Cj1141 (47)												
		Cj1140 (26)		-	+	+	+	(+)	+	-	-	+	+	+
		Cj1141 (100)												
Cj1142	<i>neuC<sup>d</sup></i>	Cj1142 (6)												
		Cj1141 (29)		-	(+)	+	+	+	+	-	-	+	+	+
Cj1143	<i>neuA<sup>d</sup></i>	Cj1142 (98)												
		Cj1143 (42)		-	-	+	+	+	+	-	-	+	+	+
Cj1144	unknown	Cj1143 (15)	✓	-	-	+	+	+	+	-	-	+	+	+
		Cj1144 (75)												
Cj1145	unknown	Cj1143 (3)	✓	(+)	+	+	+	+	-	-	-	(+)	+	+
		Cj1144 (100)												
		Cj1145 (100)												
Cj1146	<i>waaV</i>	Cj1146 (76)												
		Cj1146 (89)		+	+	+	+	+	+	(+)	(+)	+	(+)	+
Cj1148	<i>waaF</i>	Cj1148 (9)												
		Cj1148 (80)		+	+	+	+	+	+	+	+	+	+	+
Cj1149	<i>gmhA</i>	Cj1149 (2)												
		Cj1149 (92)		+	+	+	+	+	+	+	+	+	+	+
Cj1150	<i>rfaE</i>	Cj1150 (27)												
		Cj1149 (23)		+	+	+	+	+	+	(+)	(+)	+	+	(+)
Cj1151	<i>rfaD</i>	Cj1150 (94)												
		Cj1150 (35)		+	+	+	+	+	+	+	+	+	+	+
Cj1152	phosphatase	Cj1151 (83)												
		Cj1152 (76)		+	+	+	+	+	+	+	+	+	+	+
		Cj1153 (100)												

A + or - indicates that the red/green hybridization signal intensity ratio is >0.5 or <0.5, respectively.

(+) indicates the possibility that the gene may be absent or highly divergent even though the red/green hybridization signal intensity ratio is >0.5 (see Methods).

<sup>a</sup>Putative gene function based on annotation (Parkhill et al. 2000).

<sup>b</sup>Genes contain intragenic homopolymeric tracts indicating potential phase variable expression (Parkhill et al. 2000).

<sup>c</sup>Linton et al. 2000b.

<sup>d</sup>Linton et al. 2000a.

NB: Cj1447 was originally designated a CDS, but was unannotated in the final genome annotation (Parkhill et al. 2000).

sule region, which encode the general capsule transport mechanism, were conserved in all the strains studied (Table 3).

*C. jejuni* LOS consists of a relatively conserved inner core with a terminal outer core region that often varies in structure between strains and can mimic human gangliosides (Moran and Penner 1999). *C. jejuni* NCTC 11168 genes involved in inner core biosynthesis include *waaC*, *waaV*, *waaF*, *rfaE*, and *rfaD*. A positive hybridizing signal was obtained with genomic DNA from 10 of 11 *C. jejuni* strains for the elements presenting *waaC*, and for all strains for *waaV*, *waaF*, *rfaE*, and *rfaD*

(Table 4). However, genes involved in *C. jejuni* NCTC 11168 LOS outer-core biosynthesis are absent or highly divergent in a number of strains. Examples include Cj1139 or *wlaN*, a  $\beta$ -1,3-galactosyltransferase responsible for the addition of the terminal galactose residue of the NCTC 11168 ganglioside GM<sub>1</sub>-like LOS (Linton et al. 2000a). This gene is absent in strains 81116, 81-176, P3, and P4 (Table 4). Other putative outer-core sugar transferases such as glycosyltransferases (Cj1135 and Cj1136) and galactosyltransferase (Cj1138) are lacking in strains 81116, 81-176, P3, and P4 (Table 4). Also of note are the genes involved in the sialylation of LOS (*neuA1*,

*neuB1*, and *neuC1*), which are absent in strains 81116, P3, and P4 (Table 4; Linton et al. 2000b).

### Validation of Microarray Data

To validate microarray data, PCR and sequence analysis of a number of variable genes from the strains studied was performed. A strategy was used to amplify PCR products across putative deletions defined by the microarray data, then to sequence these PCR products to define the precise location of the deletion. Analysis of sequence data generated was performed by BLAST search (Altschul et al. 1997). Two single gene deletions (Cj0008 and Cj1585) and two small gene clusters (Cj0055–Cj0058 and Cj0565–Cj0569) were selected in the four strains 81116, 81-176, X, and G1. Cj0008 is a gene with unknown function, but an ortholog of HP0938 in the *H. pylori* 26695 genome. Cj1585 is a probable oxidoreductase. The cluster Cj0055–Cj0058 consists of two genes of unknown function and two genes coding for possible periplasmic proteins, all with no match in the *H. pylori* 26695 genome, and the cluster Cj0565–Cj0569 contains genes with no known function and no match with the *H. pylori* 26695 genome, suggesting that these clusters may be specific to *Campylobacter* species. These studies are summarized in Table 5 and clearly validate the microarray hybridization results, which have given consistently reproducible data. Additionally, the microarray data confirm reported data on the *neuB* genes involved in sialylation in strains 81116, G1, P1, P2, and P3 (Linton et al. 2000b), the *wlaN* gene involved in LOS biosynthesis, in strains P1, P2, P3, and P4 (Linton et al. 2000a), and deletions in both the flagellin modification locus and the capsule biosynthesis locus in strains 81116, 81-176, X, and G1 (A.V. Karlyshev, unpubl.).

### DISCUSSION

Using a single pair of vector primers, we have constructed a low-cost whole genome *C. jejuni* NCTC 11168 DNA microarray representing all 1654 annotated genes that were amplified from the pUC18 clones sequenced as part of the genome project (Parkhill et al. 2000). Eleven *C. jejuni* strains of diverse origin were analyzed with respect to the genome content of the sequenced strain, revealing extensive genetic diversity within this species. One caveat with the data generated with this microarray is that some genes may be scored as present, when in fact they are absent or highly divergent. This is because of either adjacent gene sequences on some of the PCR products on the microarray or cross-hybridization with another part of the genome. If the gene represented by the PCR

product on the array is absent, but an adjacent gene is present, this will potentially increase the red/green hybridization signal intensity ratio. If this ratio is increased above 0.5, using our data analysis filtering method, the gene will be scored as present. Conversely, any gene scored as absent should be accurate within the limits of array hybridization specificity and sensitivity. Therefore, although the microarray has limitations, it is suitable for genomic comparisons where data generated is qualitative. The major advantage of using clones directly from genome projects is an inexpensive and efficient alternative for the construction of DNA microarrays, and this principle could be applied widely where random shot-gun libraries are used for sequencing.

Of the 1654 annotated genes analyzed, 1300 (78.6%) appeared to be common to all strains and can be defined as *C. jejuni* core genes. As expected, these genes mainly encoded housekeeping functions such as metabolic, biosynthetic, cellular, and regulatory processes, as in the case of the closely related pathogen *H. pylori* (Salama et al. 2000). By contrast, determinants encoding surface-located structures such as the flagellin synthesis and modification system, LOS, and capsule were absent or highly divergent in one or more strains studied. These determinants probably relate to functions important in survival, transmission, and pathogenesis, indicating that selective pressures have driven profound evolutionary changes to create a diverse *Campylobacter* species. However, not all putative virulence determinants, including several surface proteins, showed variability. Genes encoding cytolethal distending toxin (Pickett et al. 1996), flagellar structural proteins (Wassenaar et al. 1991), phospholipase A (Grant et al. 1997), the PEB antigenic surface proteins (Pei et al. 1991), and proteins potentially involved in host pathogen interactions such as CiaB (Konkel et al. 1999), CadF (Konkel et al. 1997), and CheY (Yao et al. 1997) were present in all strains, indicating that these proteins are indispensable for *C. jejuni* to cause disease in humans.

Whole genome analysis shows extensive genome diversity among the 12 *C. jejuni* strains studied, with at least 354 genes (21.4%) missing from at least one strain. This is likely to be an underestimate of the number of variable genes in *C. jejuni*, owing to the relatively small number of strains analyzed and the nature of the microarray, which sometimes contained DNA adjacent to the target gene. The percentage of variable genes is remarkably similar to that observed for the closely related gastric pathogen *H. pylori*, in which 22% of genes were variable in the 15 strains studied (Salama et al. 2000). The hybridization conditions and criteria for designating nonhybridizing genes were, as far as is possible to deter-

**Table 5. Validation of Microarray Data by PCR and Sequence Analysis**

Strain	Cj0008			Cj1585			Cj0055–Cj0058			Cj0565–Cj0569		
	array	PCR	Sequencing	Array	PCR	Sequencing	Array	PCR	Sequencing	Array	PCR	Sequencing
81116	–	–	–	–	– <sup>a</sup>	– <sup>b</sup>	–	–	–	–	– <sup>a</sup>	– <sup>c</sup>
81-176	+	+	+	–	– <sup>a</sup>	– <sup>b</sup>	+	+	+	–	– <sup>a</sup>	– <sup>c</sup>
X	–	–	–	+	+	+	+	+	+	+	+	+
G1	–	–	–	+	+	+	+	+	+	+	+	+

A + or – indicates the presence or absence, respectively, of a gene indicated by microarray data, alongside the subsequent analysis data.

<sup>a</sup>Putative insertion identified by PCR, rather than a deletion.

<sup>b</sup>Sequence analysis suggests the presence of an anaerobic dimethyl sulphoxide reductase ortholog adjacent to Cj1584.

<sup>c</sup>Analysis of sequence data adjacent to Cj0564 shows no matches with any database entry.

mine, the same in both studies. Curiously, in contrast to *H. pylori*, the genome sequence of *C. jejuni* NCTC 11168 revealed no transposons, phage remnants, or insertion sequence elements and very few repeat sequences (Parkhill et al. 2000). The mechanisms to generate genetic diversity in *C. jejuni* therefore remain unclear. However, *C. jejuni* is naturally competent, and this linked to a high recombination rate may contribute to genetic diversity. Recent multilocus sequence typing for *C. jejuni* has indicated that intraspecies and interspecies horizontal genetic exchange for this species are common (Dingle et al. 2001). The restriction/modification systems in *C. jejuni* appear divergent, with only G1, PHLS01, PHLS02, and PHLS03 of the 11 strains being similar to NCTC 11168. In *H. pylori*, numerous strain-specific restriction/modification systems have been found, and DNA methylation patterns have been shown to vary substantially among strains (Ando et al. 2000; Xu et al. 2000). Recently, the sequencing of a second *E. coli* strain has also shown restriction/modification systems to be variable (Perna et al. 2001). Elevated divergence of these systems may be associated with the positive selection of subpopulations that contribute to genetic diversity.

Compared to most genomes from enteric bacteria, the NCTC 11168 DNA sequence has a characteristically constant 30.6% G + C content over the genome. However, it is noticeable that where there are differences, these occur in loci that appear to vary between strains. For example, the NCTC 11168 G + C content in the capsule biosynthesis region is 27.6% over 42.6 kb, in the LOS biosynthesis region it is 27.8% over 20.4 kb, and the restriction modification genes Cj1549 and Cj1553 have a G + C content of 34.3% and 37.8%, respectively. The significantly variable G + C content of these regions indicates that they may have been acquired by horizontal genetic exchange and introduced relatively recently during the evolution of the *C. jejuni* genome. Additionally, phase-variable, or contingency genes, that were originally identified directly from sequencing the random shotgun library of NCTC 11168 (Parkhill et al. 2000), appear to be absent in several strains (Tables 2–4). These include four of six such genes from the capsule locus, both phase-variable genes in the LOS locus, and a phase-variable restriction/modification system, indicating that these genes are dispensable but are probably required to generate diversity on the *C. jejuni* cell surface.

Analysis of the flagellin modification locus shows similar hybridization efficiencies among all strains except for the laboratory passaged strains 81116 and 81-176 (Fig. 1). The loss of this region, which has been confirmed for 81116 using PCR analysis (A.V. Karlyshev, unpubl.), may be caused by homologous recombination through the near identical genes Cj1318 and Cj1336 that flank the deletion in NCTC 11168 (Parkhill et al. 2000). Such a recombinant event leading to this deletion may be expected in strains that have been extensively passaged in the laboratory over a 20-year period.

The Penner serotyping system has been used for differentiating *C. jejuni* strains for more than 20 years (Penner and Hennessy 1980). It was presumed that the Penner serotyping antigen arose from the *C. jejuni* surface-encoded O antigen. Recently, we demonstrated that the capsule was responsible for the Penner serotyping antigen (Karlyshev et al. 2000a). The DNA microarray data presented here provides further evidence that the capsule accounts for Penner serospecificity in that all four strains of O:2 serotype showed complete conservation of the capsule biosynthesis locus compared to the sequenced strain NCTC 11168 (also serotype O:2; Table 3). The

seven non-O:2 serotype strains lacked between 5 and 17 genes located in the putative capsule biosynthetic locus of NCTC 11168. By contrast, scrutiny of the LOS biosynthesis region showed that two non-O:2 serotypes (strains X and G1) had complete conservation of the LOS biosynthesis locus compared to the sequenced strain and that the O:2 serotype strains P2 and PHLS01 lack a single gene compared to NCTC 11168 (Table 4). Ten percent of *C. jejuni* strains are untypable using the Penner serotyping method (e.g., strain X in this study). Further genetic analysis of the capsule region among many more *C. jejuni* serotypes should enable the genetic basis of Penner serospecificity to be determined, allowing the development of improved genotyping methods to distinguish between *C. jejuni* strains. The microarray data support the hypothesis that the region flanked by the *kps* genes (see Table 3) is the capsule biosynthetic region, having a similar overall arrangement to group II/III capsules in *E. coli* (Roberts 1996).

*C. jejuni* strain diversity combined with variable host responses results in a complex spectrum of disease outcomes, ranging from asymptomatic colonization to severe inflammatory diarrhoea. In addition, chronic sequelae are also associated with *C. jejuni* infection, including irritable bowel syndrome and neuropathological complications such as Guillain-Barré and Miller Fisher syndromes. Variable genes identified through whole genome analysis may encode factors contributing to different disease outcomes and to the survival of the organism in different ecological niches. Comparison of a larger collection of strains with known clinical histories should allow associative traits to be determined for subpopulations of strains that are important in specific disease outcomes. A precise understanding of genetic differences between *C. jejuni* strains should also allow the identification of improved epidemiological markers and the development of rational approaches to reduce this problematic pathogen from the food chain.

## METHODS

### Bacterial Strains and Growth Conditions

The *C. jejuni* strains used in this study and relevant background information are shown in Table 1. Strains 81116 and 81-176 are laboratory strains that have been extensively studied. Strain X was isolated from a patient with noncomplicating gastroenteritis, whereas strain G1 was isolated from a patient with gastroenteritis who later developed GBS. Strains P1, P2, P3, and P4 are the first four Penner serotype reference strains, and the PHLS strains were selected as recent clinical isolates, all with serotype O:2. Bacteria were grown on blood agar plates, consisting of Columbia Agar Base (Oxoid) supplemented with 7% (v/v) defibrinated horse blood (TCS Microbiology), in a microaerobic atmosphere at 37°C.

### Construction of a *C. jejuni* NCTC 11168 DNA Microarray

A tiling program was designed to select a minimum set of clones representing all 1731 initially identified CDSs from the 8–10-fold redundant pUC18 library from the *C. jejuni* NCTC 11168 genome project (Parkhill et al. 2000). Plasmid DNA from each of the selected clones was transferred to 19 96-well plates. PCR amplicons were prepared in 100- $\mu$ L reactions in 96-well plates using standard vector primers (M13 forward and M13 reverse). All PCR amplifications and liquid handling were performed using a RoboAmp 4200 (MWG-Biotech). The amplicons were evaluated on agarose gels to ensure they were of the expected size and concentration. A small sample of PCR

products was sequenced to confirm that the expected gene had been amplified. Then 50  $\mu$ L of each successful PCR reaction was ethanol-precipitated and resuspended in 10  $\mu$ L of 50% (v/v) DMSO in H<sub>2</sub>O. The microarray was prepared by the robotic printing of these vector primer-generated PCR products representing each gene in the *C. jejuni* NCTC 11168 genome onto CMT-GAPS-coated glass slides (Corning), using a *Microgrid I* microgridding robot (Bio Robotics). We used a 4  $\times$  4 split pin configuration with a center-to-center spot spacing of 400  $\mu$ m, producing spots with a diameter of  $\sim$ 150  $\mu$ m. After printing, free amino groups on the coated glass slides were acetylated with 5.5 g of succinic anhydride in 350 mL of borate-buffered 1-methyl-2-pyrrolidinone at pH 8. Slides were stored in microscope slide boxes in a cool, dry environment and used within 1 mo.

### Labeling of Genomic DNA

Genomic DNA was isolated from 48-h plate-grown *C. jejuni* strains using the Wizard Genomic DNA Purification Kit (Promega). Whole genomic DNA was used as a template for direct incorporation of fluorescent analogs (Cy3 and Cy5 dCTP) by a randomly primed polymerization reaction. Briefly, 3  $\mu$ g of template DNA and 9  $\mu$ g of random hexamers (GIBCO BRL) in a reaction volume of 41.5  $\mu$ L were denatured at 95°C for 5 min and snap cooled on ice. Then 5  $\mu$ L of 10 $\times$  Klenow buffer (USB Corporation), 1.5  $\mu$ L of Cy-dye-labeled dCTP (Amersham Pharmacia Biotech), 1  $\mu$ L of dNTP solution (5 mM each dATP, dGTP, and dTTP, plus 2 mM dCTP), and 10 U of Klenow (the large fragment of DNA polymerase I, exonuclease-free; USB Corporation) were added. Test strain DNA was labeled with Cy5-dCTP and the control NCTC 11168 strain DNA with Cy3-dCTP. The labeling reactions were incubated at 37°C for 90 min.

### DNA Microarray Hybridizations

Whole genome DNA comparisons were performed, comparing both laboratory strains and clinical isolates listed in Table 1 against the sequenced strain NCTC 11168. Microarray slides were incubated in a prehybridization buffer (3.5 $\times$  SSC buffer, 0.1% SDS, 10 mg/mL BSA) at 60°C for 20 min. After prehybridisation, slides were washed in distilled water for 1 min, followed by a 1-min wash in isopropanol. Labeled DNA from the test and control strains were coprecipitated in the presence of 10  $\mu$ g of tRNA and resuspended in a total volume of 16  $\mu$ L with final concentration of 4 $\times$  SSC buffer and 0.3% SDS. The hybridization mixture was denatured at 95°C for 2 min, cooled slowly to room temperature, applied to the microarray, and covered with a 22-mm<sup>2</sup> coverslip. The slide was placed in a waterproof hybridization chamber (CMT Hybridization Chambers, Corning) for hybridization in a 60°C waterbath overnight. After hybridization, slides were washed in 1 $\times$  SSC buffer with 0.06% SDS for 2 min, followed by two washes in 0.06 $\times$  SSC buffer, each for 2 min.

### Data Acquisition and Analysis

Slides were scanned with a ScanArray 3000 (GSI Lumonics) following the manufacturer's guidelines. Fluorescent spot intensities were quantified using *ImaGene 3.0* (BioDiscovery Inc.) software. For each spot, background fluorescence was subtracted from the average spot fluorescence to produce a channel-specific value. The data were further analyzed using *GeneSpring 3.2.12* (Silicon Genetics) software. The geometric mean of the normalized red/green ratio was calculated for each test strain using data from three array experiments. Spots were excluded for low signal (<100 units in the Cy3 channel), and a cutoff for the normalized red/green ratio of <0.5 was used to create gene deletion lists using the *GeneSpring 3.2.12* software.

If a gene was absent, but was represented by a clone

containing adjacent genes that were present, then the red/green hybridisation signal intensity ratio could be raised above 0.5 and the gene subsequently scored as present. If a gene shared enough homology with other genes in the genome to allow cross-hybridization events, the same situation could occur. It was important therefore to consider both (a) the composition of each clone representing each gene on the array, and (b) the possibility of cross-hybridization of each clone with the rest of the genome. The possibility of cross-hybridization was analyzed by BLASTN analysis of the sequence of each clone used on the array against the whole genome sequence. This showed that there is very little significant cross-hybridization between *C. jejuni* NCTC 11168 genes. These data are available on-line at <http://www.sghms.ac.uk/depts/medmicro/bugs/GR-1858>. A file showing the composition of each clone used to represent each gene on the array is also available on-line. To highlight these considerations in the results presented in Tables 2, 3, and 4, an arbitrary scoring system was used to highlight genes scored as present that may in fact be absent. A gene scored as present was marked (+) rather than + if that gene was represented on the microarray by (a) an adjacent gene clone or multiple gene clone with a red/green ratio between 0.5 and 0.6; (b) a single gene clone or an adjacent gene clone with significant predicted cross-hybridization with a red/green ratio between 0.5 and 0.75; or (c) a multiple gene clone with significant predicted cross-hybridization with a red/green ratio between 0.5 and 0.9.

### Validation of Microarray Data by PCR and Sequencing

PCR primers were designed to approach both the 5' and 3' edges of predicted deletions so that the amplified region would span the missing locus for those strains in which it is deleted. Primer design was aided by the use of *Artemis 3.0* software (Rutherford et al. 2000) to visualize the edges of the predicted deletions. Both standard PCR using primer pairs and PCR using a single primer (Karlyshev et al. 2000b) were performed. The resulting amplicons were sequenced using the dideoxynucleotide chain termination method with a PRISM BigDye sequencing kit (PE Applied Biosystems) with primers designed to be internal to the original PCR primer(s).

### ACKNOWLEDGMENTS

We gratefully acknowledge Lynne Batty, Hannah Eno, and Jane Turner for technical assistance and Rob Davies for developing the tiling program for selecting optimum clones from the *C. jejuni* NCTC 11168 plasmid library. *C. jejuni* 81-176 chromosomal DNA was a generous gift from Tohru Takata and Guillermo Perez-Perez (Vanderbilt University, Nashville, TN). Strain 81116 was supplied by Diane Newell (Veterinary Laboratories Agency, Weybridge, UK), strain G1 by Norman Gregson (LSHTM, London), and strains PHLS01, PHLS02, and PHLS03 by Richard Thwaites and Jennifer Frost (Public Health Laboratory Service, London, UK). This work was supported by the Wellcome Trust and the BBSRC, UK.

The publication costs of this article were defrayed in part by payment of page charges. This article must therefore be hereby marked "advertisement" in accordance with 18 USC section 1734 solely to indicate this fact.

### REFERENCES

- Altschul, S.F., Madden, T.L., Schaffer, A.A., Zhang, J., Zhang, Z., Miller, W., and Lipman, D.J. 1997. Gapped BLAST and PSI-BLAST: A new generation of protein database search programs. *Nucleic Acids Res.* **25**: 3389–3402.
- Ando, T., Xu, Q., Torres, M., Kusugami, K., Israel, D.A., and Blaser, M.J. 2000. Restriction-modification system differences in *Helicobacter pylori* are a barrier to interstrain plasmid transfer. *Mol. Microbiol.* **37**: 1052–1065.
- Barrow, P.A. and Page, K. 2000. Inhibition of colonisation of the

- alimentary tract in young chickens with *Campylobacter jejuni* by pre-colonisation with strains of *C. jejuni*. *FEMS Microbiol. Lett.* **182**: 87–91.
- Behr, M.A., Wilson, M.A., Gill, W.P., Salamon, H., Schoolnik, G.K., Rane, S. and Small, P.M. 1999. Comparative genomics of BCG vaccines by whole-genome DNA microarray. *Science* **284**: 1520–1523.
- Blaser, M.J. 1997. Epidemiologic and clinical features of *Campylobacter jejuni* infections. *J. Infect. Dis.* **176** (Suppl. 2): S103–S105.
- Blaser, M.J., Perez, G.P., Smith, P.F., Patton, C., Tenover, F.C., Lastovica, A.J., and Wang, W.I. 1986. Extraintestinal *Campylobacter jejuni* and *Campylobacter coli* infections: Host factors and strain characteristics. *J. Infect. Dis.* **153**: 552–559.
- Buzby, J.C., Allos, B.M., and Roberts, T. 1997. The economic burden of *Campylobacter*-associated Guillain-Barré syndrome. *J. Infect. Dis.* **176** (Suppl. 2): S192–S197.
- Dingle, K.E., Colles, F.M., Wareing, D.R., Ure, R., Fox, A.J., Bolton, F.E., Bootsma, H.J., Willems, R.J., Urwin, R., and Maiden, M.C. 2001. Multilocus sequence typing system for *Campylobacter jejuni*. *J. Clin. Microbiol.* **39**: 14–23.
- Everest, P.H., Goossens, H., Butzler, J.P., Lloyd, D., Knutton, S., Ketley, J.M., and Williams, P.H. 1992. Differentiated Caco-2 cells as a model for enteric invasion by *Campylobacter jejuni* and *C. coli*. *J. Med. Micro.* **37**: 319–325.
- Fayos, A., Owen, R.J., Desai, M., and Hernandez, J. 1992. Ribosomal RNA gene restriction fragment diversity amongst Lior biotypes and Penner serotypes of *Campylobacter jejuni* and *Campylobacter coli*. *FEMS Microbiol. Lett.* **74**: 87–93.
- Grant, K.A., Belandia, I.U., Dekker, N., Richardson, P.T., and Park, S.F. 1997. Molecular characterization of *pldA*, the structural gene for a phospholipase A from *Campylobacter coli*, and its contribution to cell-associated hemolysis. *Infect. Immun.* **65**: 1172–1180.
- Hanninen, M.L., Hakkinen, M., and Rautelin, H. 1999. Stability of related human and chicken *Campylobacter jejuni* genotypes after passage through chick intestine studied by pulsed-field gel electrophoresis. *Appl. Environ. Microbiol.* **65**: 2272–2275.
- Karlyshev, A.V., Linton, D., Gregson, N.A., Lastovica, A.J., and Wren, B.W. 2000a. Genetic and biochemical evidence of a *Campylobacter jejuni* capsular polysaccharide that accounts for Penner serotype specificity. *Mol. Microbiol.* **35**: 529–541.
- Karlyshev, A.V., Pallen, M.J., and Wren, B.W. 2000b. Single-primer PCR procedure for rapid identification of transposon insertion sites. *BioTechniques* **28**: 1078–1082.
- Kokotovic, B. and On, S.L. 1999. High-resolution genomic fingerprinting of *Campylobacter jejuni* and *Campylobacter coli* by analysis of amplified fragment length polymorphisms. *FEMS Microbiol. Lett.* **173**: 77–84.
- Konkel, M.E. and Joens, L.A. 1989. Adhesion to and invasion of HEp-2 cells by *Campylobacter* spp. *Infect. Immun.* **57**: 2984–2990.
- Konkel, M.E., Garvis, S.G., Tipton, S.L., Anderson, D.E., Jr., and Cieplak, W., Jr. 1997. Identification and molecular cloning of a gene encoding a fibronectin-binding protein (CadF) from *Campylobacter jejuni*. *Mol. Microbiol.* **24**: 953–963.
- Konkel, M.E., Kim, B.J., Rivera-Amill, V., and Garvis, S.G. 1999. Bacterial secreted proteins are required for the internalization of *Campylobacter jejuni* into cultured mammalian cells. *Mol. Microbiol.* **32**: 691–701.
- Korolik, V., Alderton, M.R., Smith, S.C., Chang, J., and Coloe, P.J. 1998. Isolation and molecular analysis of colonising and non-colonising strains of *Campylobacter jejuni* and *Campylobacter coli* following experimental infection of young chickens. *Vet. Micro.* **60**: 239–249.
- Lam, K.M., Yamamoto, R., and DaMassa, A.J. 1995. DNA diversity among isolates of *Campylobacter jejuni* detected by PCR-based RAPD fingerprinting. *Vet. Micro.* **45**: 269–274.
- Linton, D., Gilbert, M., Hitchen, P.G., Dell, A., Morris, H.R., Wakarchuk, W.W., Gregson, N.A., and Wren, B.W. 2000a. Phase variation of a  $\beta$ -1,3 galactosyltransferase involved in generation of the ganglioside GM1-like lipo-oligosaccharide of *Campylobacter jejuni*. *Mol. Microbiol.* **37**: 501–514.
- Linton, D., Karlyshev, A.V., Hitchen, P.G., Morris, H.R., Dell, A., Gregson, N.A. and Wren, B.W. 2000b. Multiple *N*-acetyl neuraminic acid synthetase (*neuB*) genes in *Campylobacter jejuni*: Identification and characterization of the gene involved in sialylation of lipo-oligosaccharide. *Mol. Microbiol.* **35**: 1120–1134.
- Lior, H., Woodward, D.L., Edgar, J.A., Laroche, L.J., and Gill, P. 1982. Serotyping of *Campylobacter jejuni* by slide agglutination based on heat-labile antigenic factors. *J. Clin. Microbiol.* **15**: 761–768.
- Meinersmann, R.J. 2000. Population genetics and genealogy of *Campylobacter jejuni*. In *Campylobacter* (eds. I. Nachamkin and M. J. Blaser), pp. 351–368. ASM Press, Washington, D.C.
- Moran, A.P. and Penner, J.L. 1999. Serotyping of *Campylobacter jejuni* based on heat-stable antigens: Relevance, molecular basis and implications in pathogenesis. *J. Appl. Microbiol.* **86**: 361–377.
- Nachamkin, I., Allos, B.M., and Ho, T. 1998. *Campylobacter* species and Guillain-Barre syndrome. *Clin. Microbiol. Rev.* **11**: 555–567.
- Parkhill, J., Wren, B.W., Mungall, K., Ketley, J.M., Churcher, C., Basham, D., Chillingworth, T., Davies, R.M., Feltwell, T., Holroyd, S., et al. 2000. The genome sequence of the food-borne pathogen *Campylobacter jejuni* reveals hypervariable sequences. *Nature* **403**: 665–668.
- Pei, Z.H., Ellison, R.T.d., and Blaser, M.J. 1991. Identification, purification, and characterization of major antigenic proteins of *Campylobacter jejuni*. *J. Biol. Chem.* **266**: 16363–16369.
- Penner, J.L. and Hennessy, J.N. 1980. Passive hemagglutination technique for serotyping *Campylobacter fetus* subsp. *jejuni* on the basis of soluble heat-stable antigens. *J. Clin. Microbiol.* **12**: 732–737.
- Perna, N.T., Plunkett III, G., Burland, V., Mau, B., Glasner, J.D., Rose, D.J., Mayhew, G.F., Evans, P.S., Gregor, J., Kirkpatrick, H.A., et al. 2001. Genome sequence of enterohaemorrhagic *Escherichia coli* O157:H7. *Nature* **409**: 529–533.
- Pickett, C.L., Pesci, E.C., Cottle, D.L., Russell, G., Erdem, A.N., and Zeytin, H. 1996. Prevalence of cytolethal distending toxin production in *Campylobacter jejuni* and relatedness of *Campylobacter* sp. *cdtB* gene. *Infect. Immun.* **64**: 2070–2078.
- Prendergast, M.M., Lastovica, A.J., and Moran, A.P. 1998. Lipopolysaccharides from *Campylobacter jejuni* O:41 strains associated with Guillain-Barré syndrome exhibit mimicry of GM1 ganglioside. *Infect. Immun.* **66**: 3649–3655.
- Roberts, I.S. 1996. The biochemistry and genetics of capsular polysaccharide production in bacteria. *Annu. Rev. Microbiol.* **50**: 285–315.
- Rutherford, K., Parkhill, J., Crook, J., Horsnell, T., Rice, P., Rajandream, M.A., and Barrell, B. 2000. Artemis: Sequence visualization and annotation. *Bioinformatics* **16**: 944–945.
- Salama, N., Guillemin, K., McDaniel, T.K., Sherlock, G., Tompkins, L., and Falkow, S. 2000. A whole-genome microarray reveals genetic diversity among *Helicobacter pylori* strains. *Proc. Natl. Acad. Sci.* **97**: 14668–14673.
- Suerbaum, S., Lohrengel, M., Sonnevend, A., Ruberg, F., and Kist, M. 2001. Allelic diversity and recombination in *Campylobacter jejuni*. *J. Bacteriol.* **183**: 2553–2559.
- Wassenaar, T.M. 1997. Toxin production by *Campylobacter* species. *Clin. Microbiol. Rev.* **10**: 466–476.
- Wassenaar, T.M. and Blaser, M.J. 1999. Pathophysiology of *Campylobacter jejuni* infections of humans. *Microbes Infect.* **1**: 1023–1033.
- Wassenaar, T.M., Bleumink-Pluym, N.M., and van der Zeijst, B.A. 1991. Inactivation of *Campylobacter jejuni* flagellin genes by homologous recombination demonstrates that *flaA* but not *flaB* is required for invasion. *EMBO J.* **10**: 2055–2061.
- Wooldridge, K.G. and Ketley, J.M. 1997. *Campylobacter*–host cell interactions. *Trends Microbiol.* **5**: 96–102.
- Xu, Q., Morgan, R.D., Roberts, R.J., and Blaser, M.J. 2000. Identification of type II restriction and modification systems in *Helicobacter pylori* reveals their substantial diversity among strains. *Proc. Natl. Acad. Sci.* **97**: 9671–9676.
- Yao, R.J., Burr, D.H., and Guerry, P. 1997. CheY-mediated modulation of *Campylobacter jejuni* virulence. *Mol. Microbiol.* **23**: 1021–1031.
- Yuki, N. and Miyatake, T. 1998. Guillain-Barré syndrome and Fisher's syndrome following *Campylobacter jejuni* infection. *Ann. N.Y. Acad. Sci.* **845**: 330–340.

Received February 21, 2001; accepted in revised form June 14, 2001.