



Semisupervised adversarial neural networks for single-cell classification

Jacob C. Kimmel and David R. Kelley

Genome Res. published online February 24, 2021

Access the most recent version at doi:[10.1101/gr.268581.120](https://doi.org/10.1101/gr.268581.120)

P<P Published online February 24, 2021 in advance of the print journal.

Open Access Freely available online through the *Genome Research* Open Access option.

Creative Commons License This article, published in *Genome Research*, is available under a Creative Commons License (Attribution-NonCommercial 4.0 International), as described at <http://creativecommons.org/licenses/by-nc/4.0/>.

Email Alerting Service Receive free email alerts when new articles cite this article - sign up in the box at the top right corner of the article or [click here](#).

Advance online articles have been peer reviewed and accepted for publication but have not yet appeared in the paper journal (edited, typeset versions may be posted when available prior to final publication). Advance online articles are citable and establish publication priority; they are indexed by PubMed from initial publication. Citations to Advance online articles must include the digital object identifier (DOIs) and date of initial publication.

To subscribe to *Genome Research* go to:
<https://genome.cshlp.org/subscriptions>

Method

Semisupervised adversarial neural networks for single-cell classification

Jacob C. Kimmel and David R. Kelley

Calico Life Sciences, LLC, South San Francisco, California 94080, USA

Annotating cell identities is a common bottleneck in the analysis of single-cell genomics experiments. Here, we present scNym, a semisupervised, adversarial neural network that learns to transfer cell identity annotations from one experiment to another. scNym takes advantage of information in both labeled data sets and new, unlabeled data sets to learn rich representations of cell identity that enable effective annotation transfer. We show that scNym effectively transfers annotations across experiments despite biological and technical differences, achieving performance superior to existing methods. We also show that scNym models can synthesize information from multiple training and target data sets to improve performance. We show that in addition to high accuracy, scNym models are well calibrated and interpretable with saliency methods.

[Supplemental material is available for this article.]

Single-cell genomics allows for simultaneous molecular profiling of thousands of diverse cells and has advanced our understanding of development (Trapnell 2015), aging (Angelidis et al. 2019; Kimmel et al. 2019; Ma et al. 2020), and disease (Tanay and Regev 2017). To derive biological insight from these data, each single-cell molecular profile must be annotated with a cell identity, such as a cell type or state label. Traditionally, this task has been performed manually by domain expert biologists. Manual annotation is time-consuming, somewhat subjective, and error prone. Annotations influence the results of nearly all downstream analyses, motivating more robust algorithmic approaches for cell type annotation.

Automated classification tools have been proposed to transfer annotations across data sets (Kiselev et al. 2018; Abdelaal et al. 2019; Alquicira-Hernandez et al. 2019; de Kanter et al. 2019; Pliner et al. 2019; Tan and Cahan 2019; Zhang et al. 2019). These existing tools learn relationships between cell identity and molecular features from a training set with existing labels without considering the unlabeled target data set in the learning process. However, results from the field of semisupervised representation learning suggest that incorporating information from the target data during training can improve the performance of prediction models (Kingma et al. 2014; Oliver et al. 2018; Berthelot et al. 2019; Verma et al. 2019). This approach is especially beneficial when there are systematic differences—a domain shift—between the training and target data sets. Domain shifts are commonly introduced between single-cell genomics experiments when cells are profiled in different experimental conditions or with different sequencing technologies.

A growing family of representation learning techniques encourages classification models to provide consistent interpolations between data points as an auxiliary training task to improve performance (Berthelot et al. 2019; Verma et al. 2019). In the semisupervised setting, the MixMatch approach implements this idea by “mixing” observations and their labels with simple weighted averages. Mixed observations from the training and target data sets

form a bridge in feature space, encouraging the model to learn a smooth interpolation across the domains. Another family of techniques seeks to improve classification performance in the presence of domain shifts by encouraging the model to learn a representation in which observations from different domains are embedded nearby, rather than occupying distinct regions of a latent space (Wilson and Cook 2020). One successful approach uses a “domain adversary” to encourage the classification model to learn a representation that is invariant to data set-specific features (Ganin et al. 2016). Both interpolation consistency and domain invariance are desirable in the single-cell genomic setting, in which domain shifts are common and complex gene expression boundaries separate cell types.

Here, we introduce a cell type classification model that uses semisupervised and adversarial machine learning techniques to take advantage of both labeled and unlabeled single-cell data sets. We show that this model offers superior performance to existing methods and effectively transfers annotations across different animal ages, perturbation conditions, and sequencing technologies. Additionally, we show that our model learns biologically interpretable representations and offers well-calibrated metrics of annotation confidence that can be used to make new cell type discoveries.

Results

scNym

In the typical supervised learning framework, the model touches the target unlabeled data set to predict labels only after training has concluded. In contrast, our semisupervised learning framework trains the model parameters on both the labeled and unlabeled data in order to leverage the structure in the target data set, the measurements of which may have been influenced by myriad sources of biological and technical bias and batch effects. Although our model uses observed cell profiles from the unlabeled target data set, at no point does the model access ground truth labels for the target data. Ground truth labels on the target data set

Corresponding authors: jacob@calicolabs.com, drk@calicolabs.com

Article published online before print. Article, supplemental material, and publication date are at <https://www.genome.org/cgi/doi/10.1101/gr.268581.120>. Freely available online through the *Genome Research* Open Access option.

© 2021 Kimmel and Kelley This article, published in *Genome Research*, is available under a Creative Commons License (Attribution-NonCommercial 4.0 International), as described at <http://creativecommons.org/licenses/by-nc/4.0/>.

Table 1. Comparison of model performance across tasks

	scmap-cell	scmap-cell-exact	scmap-cluster	SVM	SingleCellNet	scPred	CHETAH	Harmony-SVM	LIGER-SVM	scANVI	scNym
Young to old rat	84.8±0.002	87.2±0.001	79.0±0.016	91.7±0.0	89.1±0.0	OOM	70.9±0.012	86.6±0.003	OOM	82.1±0.006	92.2±0.001
hPBM/Cross- Stim	63.8±0.011	41.6±0.016	80.5±0.002	85.8±0.004	90.8±0.001	63.4±0.003	56.7±0.017	91.6±0.002	91.8±0.001	82.6±0.01	92.6±0.001
TM 10x to MCA	83.6±0.005	89.7±0.001	87.3±0.001	88.4±0.001	80.5±0.005	61.2±0.025	84.7±0.006	87.3±0.007	38.4±0.006	85.9±0.002	91.4±0.001
TM 10x to SS2	62.4±0.005	92.3±0.001	80.9±0.002	93.1±0.0	85.9±0.004	70.1±0.004	86.9±0.002	78.1±0.005	79.4±0.015	88.9±0.004	93.6±0.001
Spatial Txn	72.2±0.005	81.8±0.038	83.0±0.001	92.1±0.001	87.6±0.002	92.3±0.001	56.6±0.005	89.8±0.005	92.5±0.001	84.3±0.007	91.6±0.002
Kidney cell to Nuc	80.0±0.003	89.6±0.0	79.6±0.004	88.4±0.003	86.2±0.001	66.9±0.027	86.0±0.005	91.6±0.003	90.3±0.001	25.5±0.006	90.9±0.002
Kidney Nuc to cell	75.6±0.002	63.8±0.002	83.5±0.001	86.3±0.001	82.1±0.001	83.3±0.002	23.9±0.004	83.4±0.012	84.8±0.004	24.3±0.008	89.1±0.001
Cortex SS2	63.4±0.005	86.4±0.001	81.4±0.002	86.1±0.001	84.3±0.002	73.7±0.006	84.8±0.001	85.7±0.001	85.6±0.001	69.3±0.009	86.0±0.002
Cortex 10x	83.5±0.005	91.1±0.002	87.4±0.003	91.3±0.002	89.0±0.002	90.5±0.009	93.1±0.002	91.2±0.005	91.1±0.003	77.1±0.021	94.5±0.002
Cortex DroNc	69.2±0.003	71.3±0.007	77.0±0.003	81.5±0.004	83.3±0.002	80.3±0.011	83.3±0.001	82.2±0.009	87.7±0.01	56.4±0.013	89.4±0.002
Cortex sci-seq	82.8±0.002	78.0±0.001	79.3±0.001	85.2±0.001	83.6±0.001	83.8±0.002	83.0±0.001	83.9±0.003	84.8±0.007	60.9±0.014	84.1±0.002

Mean accuracy±standard error across a fivefold training split is reported. Bold text marks best models per task ($P < 0.05$, rank sums test). Multiple bolded models indicate statistically insignificant differences between the bolded models. OOM indicates that the method encountered an out-of-memory error on our hardware (256 GB RAM). scNym is the top-ranked model across tasks.

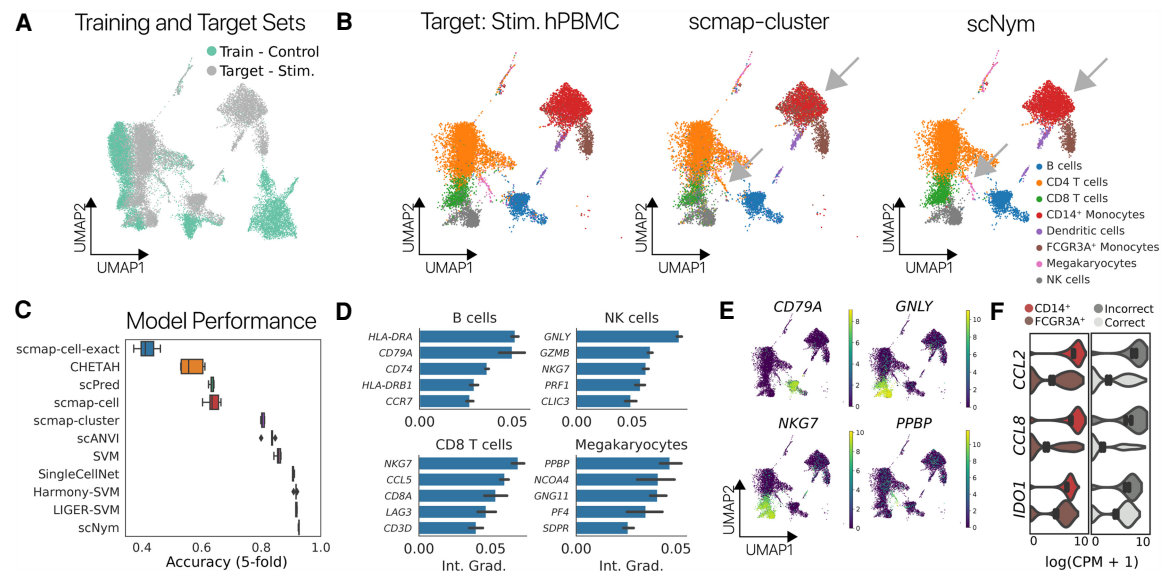


Figure 3. scNym transfers annotations from unstimulated immune cells to stimulated immune cells. (A) UMAP projection of unstimulated PBMC training data and stimulated PBMC target data with stimulation condition labels. (B) UMAP projections of ground truth cell type labels (*left*), scmap-cluster predictions (*center*), and scNym predictions for both CD14⁺ and FCGR3A⁺ monocytes. scmap-cluster confuses these populations (arrow). (C) Classification accuracy for scNym and baseline cell identity classification methods. scNym is significantly more accurate than other approaches ($P < 0.01$, Wilcoxon rank sums). (D) Integrated gradient analysis reveals genes that drive correct classification decisions. We recover known marker genes of many cell types (e.g., *CD79A* for B cells, *PPBP* for megakaryocytes). (E) Cell type specificity of the top salient genes in a UMAP projection of gene expression (log normalized counts per million). (F) Integrated gradient analysis reveals genes that drive incorrect classification of some FCGR3A⁺ monocytes as CD14⁺ monocytes. Several of the top 15 salient genes for misclassification are CD14⁺ markers that are up-regulated in incorrectly classified FCGR3A⁺ cells.

Fig. S5A–C). scNym models accurately classified monocyte subtypes, whereas baseline methods frequently confused these cells (Supplemental Fig. S5D,E).

In a second cross-technology task, we trained scNym on mouse lung data from the *Tabula Muris* and predicted on lung data from the Mouse Cell Atlas, a separate experimental effort that used microwell-seq technology (Han et al. 2018). We found that scNym yielded high classification accuracy (>90%), superior to baseline methods, despite experimental batch effects and differences in the sequencing technologies (Supplemental Fig. S6). We also trained scNym models to transfer regional identity annotations in spatial transcriptomics data and found performance competitive with baseline methods (Supplemental Fig. S7). Together, these results show that scNym models can effectively transfer cell type annotations across technologies and experimental environments.

Multidomain training allows integration of multiple reference data sets

The number of public single-cell data sets is increasing rapidly (Svensson et al. 2018). Integrating information across multiple reference data sets may improve annotation transfer performance on challenging tasks. The domain adversarial training framework in scNym naturally extends to training across multiple reference data sets. We hypothesized that a multidomain training approach would allow for more general representations that improve annotation transfer. To test this hypothesis, we evaluated the performance of scNym to transfer annotations between single-cell and single-nucleus RNA-seq experiments in the mouse kidney. These data contained six different single-cell preparation methods and three different single-nucleus methods, capturing a range of tech-

nical variation in nine distinct domains (Fig. 4A,B; Denisenko et al. 2020).

scNym achieved significantly greater accuracy than baseline methods transferring labels from single-nucleus to single-cell experiments using multidomain training. This result was also achieved for the inverse transfer task, transferring annotations from single-cell to single-nucleus experiments (tied with best baseline) (Fig. 4C; Table 1). We found that scNym delivered more accurate annotations for multiple cell types in the cell-to-nucleus transfer task, including mesangial cells and tubule cell types (Fig. 4D,E). These improved annotations highlight that the performance advantages of scNym are meaningful for downstream analysis and biological interpretation. We found that multidomain scNym models achieved greater accuracy than any single-domain model on both tasks and effectively synthesized information from single-domain training sets of varying quality (Fig. 4F; Supplemental Fig. S8). We performed a similar experiment using data from mouse cortex nuclei profiled with four distinct single-cell sequencing methods, training on three methods at a time and predicting annotations for the held-out fourth method for a total of four unique tasks. scNym was the top-ranked method across tasks (Supplemental Fig. S9).

scNym confidence scores enable expert review and allow new cell type discoveries

Calibrated predictions, in which the classification probability returned by the model precisely reflects the probability it is correct, enable more effective interaction of the human researcher with the model output. We investigated scNym calibration by comparing the prediction confidence scores to prediction accuracy (Methods). We found that semisupervised adversarial training improved model calibration, such that high-confidence predictions

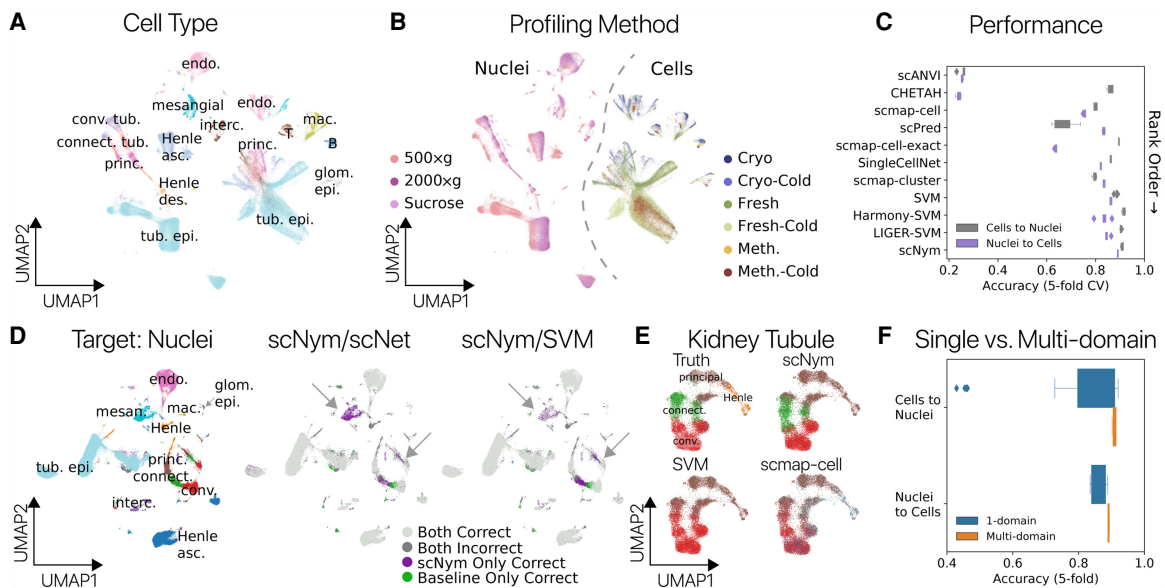


Figure 4. Multidomain training improves cross-technology annotation transfer in the mouse kidney. Cell type (A) and sequencing protocol annotations (B) in a UMAP projection of single-cell and nucleus RNA-seq profiles from the mouse kidney (Denisenko et al. 2020). Each protocol represents a unique training domain that captures technical variation. (C) Performance of scNym and baseline approaches on single-cell-to-nucleus and single-nucleus-to-cell annotation transfer. Methods are rank ordered by performance across tasks. scNym is superior to each baseline method on at least one task (Wilcoxon rank sums, $P < 0.05$). (D) Single-nucleus target data labeled with true cell types (left) or the relative accuracy of scNym and baseline methods (right) for the single-cell-to-single-nucleus task. scNym achieves more accurate labeling of mesangial cells and tubule cell types (arrows). (E) Kidney tubule cells from D visualized independently with true and predicted labels. scNym offers the closest match to true annotations. All methods make notable errors on this difficult task. (F) Comparison of scNym performance when trained on individual training data sets (1-domain) versus multidomain training across all available data sets. We found that multidomain training improves performance on both the cells-to-nuclei and nuclei-to-cells transfer tasks (Wilcoxon rank sums, $P = 0.073$ and $P < 0.01$, respectively).

are more likely to be correct (Fig. 5A,B; Supplemental Figs. S10A,B, S11). scNym confidence scores can therefore be used to highlight cells that may benefit from manual review (Supplemental Figs. S10C, S11B), further improving the annotation exercise when it contains a domain expert in the loop.

scNym confidence scores can also highlight new, unseen cell types in the target data set using an optional pseudolabel thresholding procedure during training, inspired by FixMatch (Methods) (Sohn et al. 2020). The semisupervised and adversarial components of scNym encourage the model to find a matching identity for cells in the target data set. Pseudolabel thresholding allows scNym to exclude cells with low-confidence pseudolabels from the semisupervised and adversarial components of training, stopping these components from mismatching unseen cell types and resulting in correctly uncertain predictions.

To test this approach, we simulated two experiments in which we “discover” multiple cell types by predicting annotations on the *Tabula Muris* brain cell data using models trained on non-brain tissues (Methods) (Fig. 5A,B). We first used pretrained scNym models to predict labels for new cell types not present in the original training or target sets, and scNym correctly marked these cells with low-confidence scores (Supplemental Fig. S12). In the second experiment, we included new cell types in the target set during training and found that scNym models with pseudolabel thresholding correctly provided low-confidence scores to new cell types, highlighting these cells as potential cell type discoveries for manual inspection (Fig. 5C,D; Supplemental Fig. S13).

We found that scNym embeddings capture cell type differences even within the low-confidence cell population, such that clustering these cells in the scNym embedding can provide a

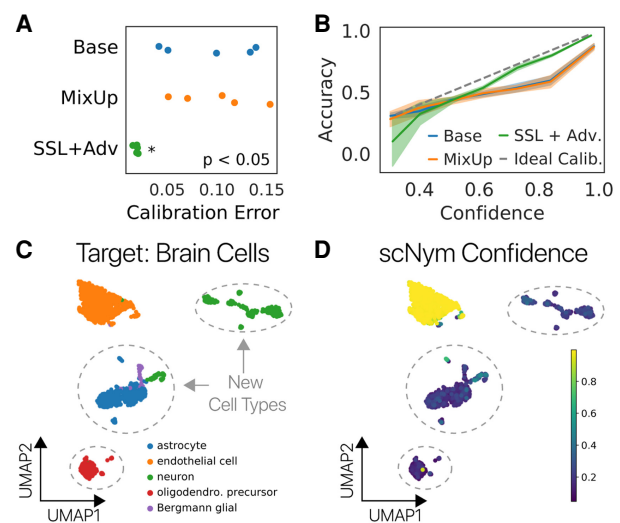


Figure 5. scNym confidence scores highlight unseen cell types. (A) scNym calibration error for models trained on the human PBMC cross-stimulation task. Semisupervised and adversarial training significantly reduced calibration error relative to models trained with only supervised methods (Base, MixUp). (B) Calibration curves capturing the relationship between model confidence and empirical accuracy for models in A. (C) scNym models were trained to transfer annotations from a mouse atlas without brain cell types to data from mouse brain tissue. We desire a model that provides low-confidence scores to the new cell types and high-confidence scores for endothelial cells seen in other tissues. (D) scNym confidence scores for target brain cells. New cell types receive low-confidence scores as desired (dashed outlines).

hypothesis for how many new cell types might be present (Supplemental Fig. S14). We also found that putative new cell types could be discriminated from other low-confidence cells, like prediction errors on a cell type boundary (Supplemental Fig. S15). These results show that scNym confidence scores can highlight target cell types that were absent in the training data, potentially enabling new cell type discoveries.

Semisupervised and adversarial training components improve annotation transfer

We ablated different components of scNym to determine which features were responsible for high performance. We found that semisupervision with MixMatch and training with a domain adversary improved model performance across multiple tasks (Fig. 6B; Supplemental Fig. S16). We hypothesized that scNym models might benefit from domain adaptation through the adversarial model by integrating the cells into a latent space more effectively. Supporting this hypothesis, we found that training and target domains were significantly more mixed in scNym embeddings (Supplemental Fig. S17). These results suggest that semisupervision and adversarial training improve the accuracy of cell type classifications.

scNym is robust to hyperparameter selection

Hyperparameter selection can be an important determinant of classification model performance. In all tasks presented here, we have used the same set of default scNym parameters derived

from past recommendations in the representation learning literature (Methods). To determine how sensitive scNym performance is to these hyperparameter choices, we trained scNym models on the hPBMC cross-stimulation task across a grid of hyperparameter values. We found that scNym is robust to hyperparameter changes within an order of magnitude of the default values, showing that our defaults are not “overfit” to the benchmark tasks presented here (Supplemental Fig. S18). We also performed hyperparameter optimization using reverse fivefold cross-validation for the top three baseline methods (SVM, SingleCellNet, scmap-cell-exact) to determine if an optimized baseline was superior to scNym across four benchmarking tasks (Methods). We found that scNym performance using default parameters was superior to the performance of baseline methods after hyperparameter tuning (Supplemental Table S3; Supplemental Fig. S19).

Discussion

Single-cell genomics experiments have become more accessible owing to commercial technologies, enabling a rapid increase in the use of these methods (Svensson et al. 2020). Cell identity annotation is an essential step in the analysis of these experiments, motivating the development of high-performance, automated annotation methods that can take advantage of diverse data sets. Here, we introduced a semisupervised adversarial neural network model that learns to transfer annotations from one experiment to another, taking advantage of information in both labeled training sets and an unlabeled target data set.

Our benchmark experiments show that scNym models provide high performance across a range of cell identity classification tasks, including cross-age, cross-perturbation, and cross-technology scenarios. scNym performs better in these varied conditions than 10 state-of-the-art baseline methods, including three unsupervised data integration approaches paired with supervised classifiers (Fig. 6A; Table 1). The superiority of scNym is consistent across diverse performance metrics, including accuracy, Cohen’s κ -score, and the multiclass receiver operating characteristic (MCROC) (Supplemental Fig. S20; Supplemental Tables S1, S2).

The key idea that differentiates scNym from previous cell classification approaches is the use of semisupervised (Berthelot et al. 2019) and adversarial training (Ganin et al. 2016) to extract information from the unlabeled, target experiment we wish to annotate. Through ablation experiments, we showed that these training strategies improve the performance of our models. Performance improvements were most pronounced when there were large, systematic differences between the training and target data sets (Fig. 3). Semisupervision and adversarial training also allow scNym to integrate information across multiple training and target data sets, improving performance (Fig. 4). As large-scale single-cell perturbation experiments become more common (Dixit et al. 2016; Srivatsan et al. 2020) and multiple cell atlases are released for common model systems, our method’s ability to adapt across distinct biological and technical conditions will only increase in value.

Most downstream biological analyses rely upon cell identity annotations, so it is important that researchers are able to interpret the molecular features that drive model decisions. We showed that backpropagation-based saliency analysis methods are able to recover specific cell type markers, confirming that scNym models learn interpretable, biologically relevant features of cell type. In future work, we hope to extend upon these interpretability methods

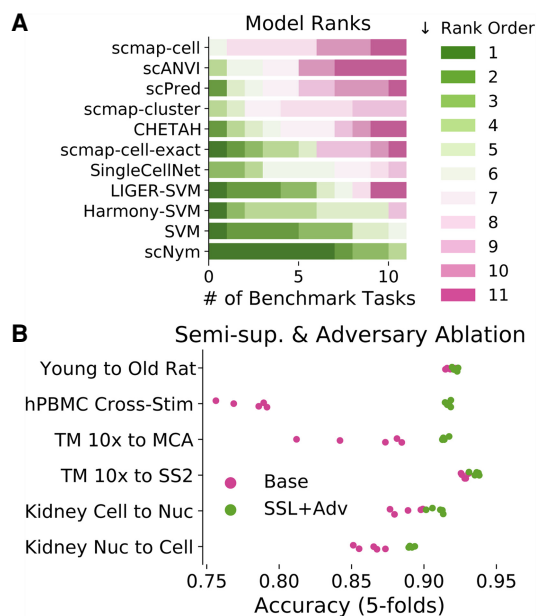


Figure 6. Comparison of semisupervised scNym to other single-cell classification methods and ablated scNym variants. (A) We assign each method a rank order (rank 1 is best) based on performance for each benchmark task. scNym is the top-ranked method across tasks and ranks highly on all tasks. A support vector machine (SVM) baseline is the next best method, consistent with a previous benchmarking study (Abdelaal et al. 2019). (B) Ablation experiments comparing simplified supervised scNym models (Base) against the full scNym model with semisupervised and adversarial training (SSL+Adv.). We found that semisupervised and adversarial training significantly improved scNym performance across diverse tasks (all tasks shown, Wilcoxon rank sums, $P < 0.05$).

to infer perturbations that alter cell identity programs using the informative representations learned by scNym.

Methods

scNym model

Our scNym model f_θ consists of a neural network with an input layer; two hidden layers, each with 256 nodes; and an output layer with a node for each class. The first three layers are paired with batch normalization (Ioffe and Szegedy 2015), rectified linear unit activation, and dropout (Srivastava et al. 2014). The final layer is paired with a softmax activation to transform real number outputs of the neural network into a vector of class probabilities. The model maps cell profile vectors x to probability distributions $p(y|x)$ over cell identity classes y :

$$p(y|x) = f_\theta(x).$$

We train scNym to map cell profiles in a gene expression matrix $x \in \mathbf{X}^{\text{Cells} \times \text{Genes}}$ to paired cell identity annotations $y \in \mathbf{Y}$. Transcript counts in the gene expression matrix are normalized to counts per million (CPM) and log-transformed after addition of a pseudocount ($\log(\text{CPM} + 1)$). During training, we randomly mask 10% of genes in each cell with zero values and then renormalize to obtain an augmented profile.

We use the Adadelta adaptive stochastic gradient descent method (Zeiler 2012) with an initial learning rate of $\eta = 1.0$ to update model parameters on minibatches of cells, with batch sizes of 256. We apply a weight decay term of $\lambda_{\text{WD}} = 10^{-4}$ for regularization. We train scNym models to minimize a standard cross-entropy loss function for supervised training:

$$L_{\text{CE}}(\mathbf{X}, f_\theta) = E_{(x,y) \sim (\mathbf{X}, \mathbf{Y})} \left[- \sum_{k=1}^K y_{(k)} \log(f_\theta(x))_k \right],$$

where $y_{(k)}$ is an indicator variable for the membership of x in class k , and $k \in K$ represents class indicators.

We fit all scNym models for a maximum of 400 epochs and selected the optimal set of weights using early stopping on a validation set consisting of 10% of the training data. We initiate early stopping after training has completed at least 5% of the total epochs to avoid premature termination.

Before passing each minibatch to the network, we perform dynamic data augmentation with the “MixUp” operation (Zhang et al. 2018). MixUp computes a weighted average of two samples x and x' where the weights λ are randomly sampled from a beta distribution with a symmetric shape parameter α :

$$\text{Mix}_\lambda(x, x') = \lambda x + (1 - \lambda)x'; \lambda \sim \text{Beta}(\alpha, \alpha).$$

For all experiments here, we set $\alpha = 0.3$ based on performance in the natural image domain (Zhang et al. 2018). Forcing models to interpolate predictions smoothly between samples shifts the decision boundary away from high-density regions of the input distribution, improving generalization. This procedure has been shown to improve classifier performance on multiple tasks (Zhang et al. 2018). Model calibration—the correctness of a model’s confidence scores for each class—is generally also improved by this augmentation scheme (Thulasidasan et al. 2019).

Semisupervision with MixMatch

We train semisupervised scNym models using the MixMatch framework (Berthelot et al. 2019), treating the target data set as unlabeled data \mathcal{U} . At each iteration, MixMatch samples minibatches from both the labeled data set $(\mathbf{X}, \mathbf{y}) \sim \mathcal{D}$ and unlabeled data set

$\mathbf{U} \sim \mathcal{U}$. We generate “pseudolabels” (Lee 2013) using model predictions for each observation in the unlabeled minibatch (Supplemental Methods):

$$u_i \sim \mathbf{U}; z_i = f_\theta(u_i).$$

We next “sharpen” the pseudolabels using a “temperature scaling” procedure (Hinton et al. 2015; Guo et al. 2017) with the temperature parameter $T = 0.5$ as a form of entropy minimization (Supplemental Methods). This entropy minimization encourages unlabeled examples to belong to one of the described classes.

We then randomly mix each observation and label/pseudolabel pair in both the labeled and unlabeled minibatches with another observation using MixUp (Zhang et al. 2018). We allow labeled and unlabeled observations to mix together during this procedure (Supplemental Methods):

$$\lambda \sim \text{Beta}(\alpha, \alpha),$$

$$w_m = \text{Mix}_\lambda(w_i, w_j); q_m = \text{Mix}_\lambda(q_i, q_j),$$

where (w_i, q_i) is either a labeled observation and ground truth label (x_i, y_i) or an unlabeled observation and the pseudolabel (u_i, z_i) . This procedure yields a minibatch \mathbf{X}' of mixed labeled observations and a minibatch \mathbf{U}' of mixed unlabeled observations.

We introduce a semisupervised interpolation consistency penalty during training in addition to the standard supervised loss. For observations and pseudolabels in the mixed unlabeled minibatch \mathbf{U}' , we penalize the mean squared error (MSE) between the mixed pseudolabels and the model prediction for the mixed observation (Supplemental Methods):

$$L_{\text{SSL}}(\mathbf{U}', f_\theta) = E_{u_m, z_m \sim \mathbf{U}'} \| f_\theta(u_m) - z_m \|_2^2.$$

This encourages the model to provide smooth interpolations between observations and their ground truth or pseudolabels, generalizing the decision boundary of the model. We weight this unsupervised loss relative to the supervised cross-entropy loss using the weighting function $\lambda_{\text{SSL}}(t) \rightarrow [0, 1]$. We initialize this coefficient to $\lambda_{\text{SSL}} = 0$ and increase the weight to a final value of $\lambda_{\text{SSL}} = 1$ over 100 epochs using a sigmoid schedule (Supplemental Methods):

$$L(\mathbf{X}', \mathbf{U}', f_\theta, t) = L_{\text{CE}}(\mathbf{X}', f_\theta) + \lambda_{\text{SSL}}(t) L_{\text{SSL}}(\mathbf{U}', f_\theta).$$

Domain adaptation with domain adversarial networks

We use domain adversarial networks (DANs) as an additional approach to incorporate information from the target data set during training (Ganin et al. 2016). The DAN method encourages the classification model to embed cells from the training and target data set with similar coordinates, such that training and target data sets are well mixed in the embedding. By encouraging the training and target data set to be well mixed, we take advantage of the inductive bias that cell identity classes in each data set are similar, despite technical variation or differences in conditions (Supplemental Methods).

We introduce this technique into scNym by adding an adversarial domain classification network, g_ϕ . We implement g_ϕ as a two-layer neural network with a single hidden layer of 256 units and a rectified linear unit activation, followed by a classification layer with one output per domain of origin and a softmax activation. This adversary attempts to predict the domain of origin d from the penultimate classifier embedding v of each observation. For each forward pass, it outputs a probability vector, \hat{d} , estimating the likelihood the observation came from the training or target domain.

We assign a one-hot encoded domain label, d , to each molecular profile based on the experiment of origin (Supplemental

Methods). During training, we pass a minibatch of labeled observations, $x \in \mathbf{X}$, and unlabeled observations, $u \in \mathbf{U}$, through the domain adversary to predict domain labels:

$$\hat{d} = g_\phi(v) = g_\phi(f_\theta(x)^{(l-1)}),$$

where \hat{d} is the domain probability vector, and $v = f_\theta(x)^{(l-1)}$ denotes the embedding of x from the penultimate layer of the classification model f_θ . We fit the adversary using a multiclass cross-entropy loss, as described above for the main classification loss (Supplemental Methods).

To make use of the adversary for training the classification model, we use the “gradient reversal” trick at each backward pass. We update the parameters ϕ of the adversary using standard gradient descent on the loss L_{adv} . At each backward pass, this optimization improves the adversarial domain classifier (Supplemental Methods). We update the parameters θ of the classification model using the *inverse* of the gradients computed during a backward pass from L_{adv} . Using the inverse gradients encourages the classification model f_θ to generate an embedding where it is difficult for the adversary to predict the domain (Supplemental Methods). Our update rule for the classification model parameters therefore becomes

$$\theta_t = \theta_{t-1} - \eta \left(\frac{\partial L_{\text{CE}}}{\partial \theta} + \lambda_{\text{SSL}}(t) \frac{\partial L_{\text{SSL}}}{\partial \theta} - \lambda_{\text{adv}}(t) \frac{\partial L_{\text{adv}}}{\partial \theta} \right).$$

We increase the weight of the adversary gradients from $\lambda_{\text{adv}} \rightarrow [0, 0.1]$ over the course of 20 epochs during training using a sigmoid schedule. We scale the adversarial *gradients* flowing to θ , rather than the adversarial loss term, so that full-magnitude gradients are used to train a robust adversary, g_ϕ (Supplemental Methods). Incorporating both MixMatch and the domain adversary, our full loss function becomes

$$L(\mathbf{X}, \mathbf{U}, \mathbf{X}', \mathbf{U}', f_\theta, g_\phi, t) = L_{\text{CE}}(\mathbf{X}', f_\theta) + \lambda_{\text{SSL}}(t) L_{\text{SSL}}(\mathbf{U}', f_\theta) + L_{\text{adv}}(\mathbf{X}, \mathbf{U}, f_\theta, g_\phi, t).$$

Pseudolabel thresholding for new cell type discovery

Entropy minimization and domain adversarial training enforce an inductive bias that all cells in the target data set belong to a class in the training data set. For many cell type classification tasks, this assumption is valid and useful. However, it is violated in the case in which new, unseen cell types are present in the target data set. We introduce an alternative training configuration to allow for quantitative identification of new cell types in these instances.

We have observed that new cell types will receive low-confidence pseudolabels, as they do not closely resemble any of the classes in the training set (Supplemental Fig. S12). We wish to exclude these low-confidence pseudolabels from our entropy minimization and domain adversarial training procedures, as these methods incorrectly encourage these new cell types to receive both high-confidence predictions and embeddings for a known cell type. We therefore adopt a notion of “pseudolabel confidence thresholding” introduced in the FixMatch method (Sohn et al. 2020). To identify confident pseudolabels to use during training, we set a minimum pseudolabel confidence $\tau = 0.9$ and assign all pseudolabels a binary confidence indicator, $c_i \in \{0, 1\}$ (Supplemental Methods).

We make two modifications to the training procedure to prevent low-confidence pseudolabels from contributing to any component of the loss function. First, we use only high-confidence pseudolabels in the MixUp operation of the MixMatch procedure. This prevents low-confidence pseudolabels from contributing to the supervised classification or interpolation consistency losses (Supplemental Methods). Second, we use only unlabeled examples

with high-confidence pseudolabels to train the domain adversary. These low-confidence unlabeled examples can therefore occupy a unique region in the model embedding, even if they are easily discriminated from training examples. Our adversarial loss is slightly modified to penalize domain predictions only on confident samples in the pseudolabeled minibatch (Supplemental Methods).

We found that this pseudolabel thresholding configuration option was essential to provide accurate, quantitative information about the presence of new cell types in the target data set (Supplemental Fig. S13). However, this option does modestly decrease performance when new cell types are not present. We therefore enable this option when the possibility of new cell types violates the assumption that the training and target data share the same set of cell types. We have provided a simple toggle in our software implementation to allow users to enable or disable this feature.

scNym model embeddings

We generate gene expression embeddings from our scNym model by extracting the activations of the penultimate neural network layer for each cell. We visualize these embeddings using UMAP (Becht et al. 2019; McInnes et al. 2020) by constructing a nearest-neighbor graph ($k = 30$) in principal component space derived from the penultimate activations. We set $\text{min_dist} = 0.3$ for the UMAP minimum distance parameter.

We present single-cell experiments using a two-dimensional representation fit using the UMAP algorithm (Becht et al. 2019). For each experiment, we compute a PCA projection on a set of highly variable genes after $\log(\text{CPM} + 1)$ normalization. We construct a nearest-neighbor graph using the first 50 principal components and fit a UMAP projection from this nearest-neighbor graph.

Entropy of mixing

We compute the “entropy of mixing” to determine the degree of domain adaptation between training and target data sets in an embedding X . The entropy of mixing is defined as the entropy of a vector of class membership in a local neighborhood of the embedding:

$$H(p^{\text{Local}}) = - \sum_{k=1}^K p_k^{\text{Local}} \log p_k^{\text{Local}},$$

where p^{Local} is a vector of class proportions in a local neighborhood, and $k \in K$ are class indices. We compute the entropy of mixing for an embedding X by randomly sampling $n = 1000$ cells and computing the entropy of mixing on a vector of class proportions for the 100 nearest neighbors to each point.

Integrated gradient analysis

We interpreted the predictions of our scNym models by performing integrated gradient analysis (Sundararajan et al. 2017). Given a trained model, f_θ , and a target class, k , we computed an integrated gradient score IG as the sum of gradients on a class probability, $f_\theta(x)_k$, with respect to an input gene expression vector, x , at $M = 100$ points along a linear path between the zero vector and the input x . We then multiplied the sum of gradients for each gene by the expression values in the input x . Stated formally, we computed

$$\text{IG}(x, k, f_\theta) = x \cdot \frac{1}{M} \sum_{m=1}^M \frac{\partial f_\theta\left(\frac{m}{M}x\right)_k}{\partial x}.$$

In the original integrated gradient formalism, this is equivalent to using the zero vector as a baseline. We average the

integrated gradients across n_s cell input vectors x to obtain class-level maps IG_k , where $n_s = \min(300, n_k)$, and n_k is the number of cells in the target class. To identify genes that drive incorrect classifications, we computed integrated gradients with respect to some class k for cells with true class k' that were incorrectly classified as class k .

Interpretability comparison

We compared the biological relevance of features selected by scNym and SVM as a baseline by computing cell type-specific Gene Ontology enrichments. We trained both scNym and an SVM to transfer labels from the *Tabula Muris* 10x Genomics data set to the *Tabula Muris* Smart-seq2 data set. We then extracted feature importance scores from the scNym model using integrated gradients and from the SVM model based on coefficient weights. We selected cell type markers for each model as the top $k=100$ genes with the highest integrated gradient values or SVM coefficients.

For 19 cell types with corresponding Gene Ontology terms, we computed the enrichment of the relevant cell type-specific Gene Ontology terms in scNym-derived and SVM-derived cell type markers using Fisher's exact test (Supplemental Methods). We present a sample of the gene sets used (Supplemental Table S4). We compared the mean odds ratio from Fisher's exact test across relevant Gene Ontology terms between scNym-derived markers and SVM-derived markers. To determine statistical significance of a difference in these mean odds ratios, we performed a paired t -test across cell types. We performed the procedure above using $k \in \{50, 100, 150\}$ to determine the sensitivity of our results to this parameter. We found that scNym-integrated gradients had consistently stronger enrichments for relevant Gene Ontology terms across cell types for all values of k .

Model calibration analysis

We evaluated scNym calibration by binning all cells in a query set based on the softmax probability of their assigned class $-\max_k(\text{softmax}(f_\theta(x)_k))$ —which we term the “confidence score.” We grouped cells into $M=10$ bins B_m , of equal width from $[0, 1]$ and computed the mean accuracy of predictions within each bin:

$$\begin{aligned} \text{acc}(B_m) &= \langle 1(\hat{y} \equiv y) \rangle, \\ \text{conf}(B_m) &= \langle \max p_i \rangle, \end{aligned}$$

where $1(a \equiv b)$ denotes a binary equivalency operation that yields 1 if a and b are equivalent and 0 otherwise and $\langle \cdot \rangle$ denotes the arithmetic average.

We computed the “expected calibration error” as previously proposed (Thulasidasan et al. 2019):

$$\text{ECE} = \sum_{m=1}^M \frac{|B_m|}{N} |\text{acc}(B_m) - \text{conf}(B_m)|.$$

We also computed the “overconfidence error”, which specifically focuses on high confidence but incorrect predictions:

$$\begin{aligned} \text{oe}(B_m) &= \text{conf}(B_m) \max((\text{conf}(B_m) - \text{acc}(B_m)), 0), \\ \text{OE} &= \sum_{m=1}^M \frac{|B_m|}{N} \text{oe}(B_m), \end{aligned}$$

where N is the total number of samples, and $|B_m|$ is the number of samples in bin B_m .

We performed this analysis for each model trained in a five-fold cross-validation split to estimate calibration for a given model configuration. We evaluated calibrations for baseline neural net-

work models, models with MixUp but not MixMatch, and models with the full MixMatch procedure.

Baseline methods

As baseline methods, we used 10 cell identity classifiers: scmap-cell, scmap-cluster (Kiselev et al. 2018; Andrews and Hemberg 2019), scmap-cell-exact (scmap-cell with exact k-NN search), a linear SVM (Abdelaal et al. 2019), scPred (Alquicira-Hernandez et al. 2019), SingleCellNet (Tan and Cahan 2021), CHETAH (de Kanter et al. 2019), Harmony followed by an SVM (Korsunsky et al. 2019), LIGER followed by an SVM (Stuart et al. 2019), and scANVI (Lopez et al. 2018; Xu et al. 2021). For model training, we split data into fivefolds and trained five separate models, each using fourfolds for training and validation data. This allowed us to assess variation in model performance as a function of changes in the training data. No class balancing was performed before training, although some methods perform class balancing internally. All models, including scNym, were trained on the same five-fold splits to ensure equitable access to information. All methods were run with the best hyperparameters suggested by the investigators unless otherwise stated for our hyperparameter optimization comparisons (for full details, see Supplemental Methods).

We applied all baseline methods to all benchmarking tasks. If a method could not complete the task given 256 GB of RAM and 8 CPU cores, we reported the accuracy for that method as “undetermined.” Only the scNym and scANVI models required GPU resources. We trained models on Nvidia K80, GTX1080ti, Titan RTX, or RTX 8000 GPUs, using only a single GPU per model.

Performance benchmarking

For all benchmarks, we computed the mean accuracy across cells (“accuracy”), Cohen's κ -score, and the multiclass receiver operating characteristic (MCROC). We computed the MCROC as the mean of ROC scores across cell types, treating each cell type as a binary classification problem. We used external methods to generate probabilistic outputs for baseline methods where appropriate (Platt 1999). We performed quality-control filtering and preprocessing on each data set before training (Supplemental Methods).

For the Rat Aging Cell Atlas (Ma et al. 2020) benchmark, we trained scNym models on single-cell RNA-seq from young, ad libitum fed rats (5 mo old) and predicted on cells from aged rats (ad libitum fed or calorically restricted). For the human PBMC stimulation benchmark, we trained models on unstimulated PBMCs collected from multiple human donors and predicted on IFN β 1-stimulated PBMCs collected in the same experiment (Kang et al. 2018).

For the *Tabula Muris* cross-technology benchmark, we trained models on the *Tabula Muris* 10x Genomics Chromium platform and predicted on data generated using Smart-seq2. For the Mouse Cell Atlas (MCA) (Han et al. 2018) benchmark, we trained models on single-cell RNA-seq from lung tissue in the *Tabula Muris* 10x Chromium data (The *Tabula Muris* Consortium 2018) and predicted on MCA lung data. For the spatial transcriptomics benchmark, we trained models on spatial transcriptomics from a mouse sagittal-posterior brain section and predicted labels for another brain section (data downloaded from <https://www.10xgenomics.com/resources/datasets/>).

For the single-cell to single-nucleus benchmark in the mouse kidney, we trained scNym models on all single-cell data from six unique sequencing protocols and predicted labels for single nuclei from three unique protocols (Denisenko et al. 2020). For the single-nucleus to single-cell benchmark, we inverted the training and target data sets above to train on the nuclei data sets and

predict on the single-cell data sets. We set unique domain labels for each protocol during training in both benchmark experiments. To evaluate the impact of multidomain training, we also trained models on only one single-cell or single-nucleus protocol using the domains from the opposite technology as target data.

For the multidomain cross-technology benchmark in mouse cortex nuclei, we generated four distinct subtasks from data generated using four distinct technologies to profile the same samples (Ding et al. 2020). We trained scNym and baseline methods to predict labels on one technology given the remaining three technologies as training data for all possible combinations. We used each technology as a unique domain label for scNym.

For the cross-species mouse-to-rat demonstration, we selected a set of cell types with comparable annotations in the *Tabula Muris* and Rat Aging Cell Atlas (Ma et al. 2020) to allow for quantitative evaluation. We trained scNym with mouse data as the source domain and rat data as the target domain. We used the new identity discovery configuration to account for the potential for new cell types in a cross-species experiment. For the cross-species mouse-to-human demonstration, we similarly selected a set of cell types with comparable cell annotation ontologies in the *Tabula Muris* 10x lung data and human lung cells from the IPF Cell Atlas (Habermann et al. 2020). We trained an scNym model using mouse data as the source domain and human data as the target, as for the mouse-to-rat demonstration.

Runtime benchmarking

We measured the runtime of scNym and each baseline classification method using subsamples from the multidomain kidney single-cell and single-nuclei data set (Denisenko et al. 2020). We measured runtimes for annotation transfer from single cells to single-nuclei labels using subsamples of size $n \in \{1250, 2500, 5000, 10000, 20000, 40000\}$ for each of the training and target data sets. All methods were run on four cores of a 2.1-GHz Intel Xeon Gold 6130 CPU and 64 GB of CPU memory. GPU-capable methods (scNym, scANVI) were provided with one Nvidia Titan RTX GPU (consumer grade CUDA compute device).

Hyperparameter optimization experiments

We performed hyperparameter optimization across four tasks for the top three baseline methods: the SVM, SingleCellNet, and scmap-cell-exact. For the SVM, we optimized the regularization strength parameter C at 12 values ($C \in 10^k \forall k \in [-6, 5]$) with and without class weighting. For class weighting, we set class weights as either uniform or inversely proportional to the number of cells in each class to enforce class balancing ($w_k = 1/n_k$, where w_k is the weight for class k , and n_k is the number of cells for that class). For scmap-cell-exact, we optimized (1) the number of nearest neighbors ($k \in \{5, 10, 30, 50, 100\}$), (2) the distance metric ($d(\cdot, \cdot) \in \{\text{cosine, euclidean}\}$), and (3) the number of features to select with M3Drop ($n_f \in \{500, 1000, 2000, 5000\}$). For SingleCellNet, we optimized with $n\text{TopGenes} \in \{10, 20\}$, $n\text{Rand} \in \{35, 70, 140\}$, $n\text{Trees} \in \{100, 1000, 2000\}$, and $n\text{TopGenePairs} \in \{12, 25\}$.

We optimized scNym for two of the four tasks, owing to computational expense and superiority of default parameters relative to baseline methods. For scNym, we optimized (1) weight decay ($\lambda_w \in 10^{-5}, 10^{-4}, 10^{-3}$), (2) batch size ($M \in \{128, 256\}$), (3) the number of hidden units ($h \in \{256, 512\}$), (4) the maximum MixMatch weight ($\lambda_{\text{SSL}} \in \{0.01, 0.1, 1.0\}$), and (5) the maximum DAN weight ($\lambda_{\text{adv}} \in \{0.01, 0.1, 0.2\}$). We did not optimize weight decay for the PBMC cross-stimulation task. We performed a grid search for all methods.

Hyperparameter optimization is nontrivial in the context of a domain shift between the training and test set. Traditional optimization using cross-validation on the training set alone may overfit parameters to the training domain, leading to suboptimal outcomes. This failure mode is especially problematic for domain adaptation models, in which decreasing the strength of domain adaptation regularizers may improve performance within the training data while actually decreasing performance on the target data.

In light of these concerns, we adopted a procedure known as reverse cross-validation to evaluate each hyperparameter set (Zhong et al. 2010). Reverse cross-validation uses both the training and target data sets during training to account for the effect of hyperparameters on the effectiveness of transferring labels across domains. Formally, we first split the labeled training data \mathcal{D} into a training set, validation set, and held-out test set \mathcal{D}' , \mathcal{D}^v , \mathcal{D}^* . We use 10% of the training data set for the validation set and 10% for the held-out test set. We then train a model, $f_{\theta}:x \rightarrow \hat{y}$, to transfer labels from the training set \mathcal{D}' to the target data \mathcal{U} . We use the validation set \mathcal{D}^v for early stopping with scNym and concatenate it into the training set for other methods that do not use a validation set. We treat the predictions $\hat{y} = f_{\theta}(u)$ as pseudolabels for the unlabeled data set and subsequently train a second model, $f_{\phi}:u \rightarrow \tilde{y}$, to transfer annotations from the “pseudolabeled” data set \mathcal{U} back to the labeled data set \mathcal{D} . We then evaluate the “reverse accuracy” as the accuracy of the labels \tilde{y} for the held-out test portion of the labeled data set \mathcal{D}^* .

We performed this procedure using a standard fivefold split for each parameter set. We computed the mean reverse cross-validation accuracy as the performance metric for robustness. For each method that we optimized, we selected the optimal set of hyperparameters as the set with the top reverse cross-validation accuracy.

New cell type discovery experiments

New cell type discovery with pretrained models

We evaluated the ability of scNym to highlight new cell types, unseen in the training data by predicting cell type annotations in the *Tabula Muris* brain data (Smart-seq2) using models trained on the 10x Genomics data from the 10 tissues noted above with the Smart-seq2 data as a corresponding target data set. No neurons or glia were present in the training or target set for this experiment. This experiment simulates the scenario in which a pretrained model has been fit to transfer across technologies (10x to Smart-seq2) and is later used to predict cell types in a new tissue, unseen in the original training or target data.

We computed scNym confidence scores for each cell as $c_i = \max p_i$, where p_i is the model prediction probability vector for cell i as noted above. To highlight potential cell type discoveries, we set a simple threshold on these confidence scores, $d_i = c_i \leq 0.5$, where $d_i \in \{0, 1\}$ is a binary indicator variable. We found that scNym assigned low confidence to the majority of cells from newly “discovered” types unseen in the training set using this method.

New cell type discovery with semisupervised training

We also evaluated the ability of scNym to discover new cell types in a scenario in which new cell types are present in the target data used for semisupervised training. We used the same training data and target data as the experiment above, but we now introduce the *Tabula Muris* brain data (Smart-seq2) into the target data set during semisupervised training. We performed this experiment using our default scNym training procedure, as well as the modified new cell type discovery procedure described above.

As above, we computed confidence scores for each cell and set a threshold of $d_i = c_i \leq 0.5$ to identify potential new cell type discoveries. We found that scNym models trained with the new cell type discovery procedure provided low-confidence scores to the new cell types, suitable for identification of these new cells. We considered all new cell type predictions to be incorrect when computing accuracy for the new cell type discovery task.

Clustering candidate new cell types

We used a community detection procedure in the scNym embedding to suggest the number of distinct cell states represented by low-confidence cells. First, we identify cells with a confidence score lower than a threshold t_{conf} to highlight putative cell type discoveries, $d_i = c_i < t_{\text{conf}}$. We then extract the scNym penultimate embedding activations for these low-confidence cells and construct a nearest-neighbor graph using the $k = 15$ nearest neighbors for each cell. We compute a Leiden community detection partition for a range of different resolution parameters, $r \in \{0.1, 0.2, 0.3, 0.5, 1.0\}$, and compute the Calinski–Harabasz score for each partition (Calinski and Harabasz 1974). We select the optimal partition in the scNym embedding as the partition generated with the maximum Calinski–Harabasz score and suggest that communities in this partition may each represent a distinct cell state.

Discriminating candidate new cell types from other low-confidence predictions

Cells may receive low-confidence predictions for multiple reasons, including (1) a cell is on the boundary between two cell types, (2) a cell has very little training data for the predicted class, and (3) the cell represents a new cell type unseen in the training data set. To discriminate between these possibilities, we use a heuristic similar to the one we use for proposing a number of new cell types that might be present. First, we extract the scNym embedding coordinates from the penultimate layer activations for all cells and build a nearest-neighbor graph. We then optimize a Leiden cluster partition by scanning different resolution parameters to maximize the Calinski–Harabasz score. We then compute the average prediction confidence across all cells in each of the resulting clusters. We also visualize the number of cells present in the training data for each predicted cell type.

We consider cells with low prediction scores within an otherwise high-confidence cluster to be on the boundary between cell types. These cells may benefit from domain expert review of the specific criteria to use when discriminating between very similar cell identities. We consider low-confidence cell clusters with few training examples for the predicted class to warrant further domain expert review. Low-confidence clusters that are predicted to be a class with ample training data may represent new cell types and also warrant further review.

Software availability

Open-source code for our software and preprocessed reference data sets analyzed in this study are available in the scNym repository (<https://github.com/calico/scnym>) and as [Supplemental Code](#).

Competing interest statement

J.C.K. and D.R.K. are paid employees of Calico Life Sciences, LLC.

Acknowledgments

We thank Zhenghao Chen, Amoolya H. Singh, and Han Yuan for helpful discussions and comments. Funding for this study was provided by Calico Life Sciences, LLC.

Author contributions: J.C.K. conceived the study, implemented software, conducted experiments, and wrote the paper. D.R.K. conceived the study and wrote the paper.

References

- Abdelaal T, Michielsens L, Cats D, Hoogduin D, Mei H, Reinders MJT, Mahfouz A. 2019. A comparison of automatic cell identification methods for single-cell RNA sequencing data. *Genome Biol* **20**: 194. doi:10.1186/s13059-019-1795-z
- Alquicira-Hernandez J, Sathe A, Ji HP, Nguyen Q, Powell JE. 2019. *scPred*: accurate supervised method for cell-type classification from single-cell RNA-seq data. *Genome Biol* **20**: 264. doi:10.1186/s13059-019-1862-5
- Andrews TS, Hemberg M. 2019. M3Drop: dropout-based feature selection for scRNAseq. *Bioinformatics* **35**: 2865–2867. doi:10.1093/bioinformatics/bty1044
- Angelidis I, Simon LM, Fernandez IE, Strunz M, Mayr CH, Greiffo FR, Tsiiridis G, Ansari M, Graf E, Strom TM, et al. 2019. An atlas of the aging lung mapped by single cell transcriptomics and deep tissue proteomics. *Nat Commun* **10**: 963. doi:10.1038/s41467-019-08831-9
- Becht E, McInnes L, Healy J, Dutertre CA, Kwok IWH, Ng LG, Ginhoux F, Newell EW. 2019. Dimensionality reduction for visualizing single-cell data using UMAP. *Nat Biotechnol* **37**: 38–44. doi:10.1038/nbt.4314
- Berthelot D, Carlini N, Goodfellow I, Papernot N, Oliver A, Raffel CA. 2019. MixMatch: a holistic approach to semi-supervised learning. *Advances in Neural Information Processing Systems* **32**: 5049–5059.
- Calinski T, Harabasz J. 1974. A dendrite method for cluster analysis. *Commun Stat* **3**: 1–27. doi:10.1080/03610927408827101
- de Kanter JK, Lijnzaad P, Candelli T, Margaritis T, Holstege FCP. 2019. CHETAH: a selective, hierarchical cell type identification method for single-cell RNA sequencing. *Nucleic Acids Res* **47**: e95. doi:10.1093/nar/gkz543
- Denisenko E, Guo BB, Jones M, Hou R, de Kock L, Lassmann T, Poppe D, Clément O, Simmons RK, Lister R, et al. 2020. Systematic assessment of tissue dissociation and storage biases in single-cell and single-nucleus RNA-seq workflows. *Genome Biol* **21**: 130. doi:10.1186/s13059-020-02048-6
- Ding J, Adiconis X, Simmons SK, Kowalczyk MS, Hession CC, Marjanovic ND, Hughes TK, Wadsworth MH, Burks T, Nguyen LT, et al. 2020. Systematic comparison of single-cell and single-nucleus RNA-sequencing methods. *Nat Biotechnol* **38**: 737–746. doi:10.1038/s41587-020-0465-8
- Dixit A, Parnas O, Li B, Chen J, Fulco CP, Jerby-Aron L, Marjanovic ND, Dionne D, Burks T, Raychowdhury R, et al. 2016. Perturb-Seq: dissecting molecular circuits with scalable single-cell RNA profiling of pooled genetic screens. *Cell* **167**: 1853–1866.e17. doi:10.1016/j.cell.2016.11.038
- Ganin Y, Ustinova E, Ajakan H, Germain P, Larochelle H, Laviolette F, Marchand M, Lempitsky V. 2016. Domain-adversarial training of neural networks. *J Mach Learn Res* **17**: 1–35.
- Guo C, Pleiss G, Sun Y, Weinberger KQ. 2017. On calibration of modern neural networks. In *Proceedings of the 34th International Conference on Machine Learning* **70**: 1321–1330. JMLR.org.
- Habermann AC, Gutierrez AJ, Bui LT, Yahn SL, Winters NI, Calvi CL, Peter L, Chung MI, Taylor CJ, Jetter C, et al. 2020. Single-cell RNA sequencing reveals profibrotic roles of distinct epithelial and mesenchymal lineages in pulmonary fibrosis. *Sci Adv* **6**: eaba1972. doi:10.1126/sciadv.aba1972
- Han X, Wang R, Zhou Y, Fei L, Sun H, Lai S, Saadatpour A, Zhou Z, Chen H, Ye F, et al. 2018. Mapping the mouse cell atlas by microwell-Seq. *Cell* **173**: 1307. doi:10.1016/j.cell.2018.05.012
- Hinton G, Vinyals O, Dean J. 2015. Distilling the knowledge in a neural network. arXiv:1503.02531 [stat.ML].
- Ioffe S, Szegedy C. 2015. Batch normalization: accelerating deep network training by reducing internal covariate shift. In *Proceedings of the 32nd International Conference on Machine Learning* **37**: 448–456. JMLR.org.
- Kang HM, Subramaniam M, Targ S, Nguyen M, Maliskova L, McCarthy E, Wan E, Wong S, Byrnes L, Lanata CM, et al. 2018. Multiplexed droplet single-cell RNA-sequencing using natural genetic variation. *Nat Biotechnol* **36**: 89–94. doi:10.1038/nbt.4042
- Kimmel JC, Penland L, Rubinstein ND, Hendrickson DG, Kelley DR, Rosenthal AZ. 2019. Murine single-cell RNA-seq reveals cell-identity- and tissue-specific trajectories of aging. *Genome Res* **29**: 2088–2103. doi:10.1101/gr.253880.119
- Kingma DP, Mohamed S, Jimenez Rezende D, Welling M. 2014. Semi-supervised learning with deep generative models. In *Advances in neural information processing systems* (ed. Ghahramani Z, et al.). Curran Associates, Red Hook, NY.
- Kiselev VY, Yiu A, Hemberg M. 2018. scmap: projection of single-cell RNA-seq data across data sets. *Nat Methods* **15**: 359–362. doi:10.1038/nmeth.4644

- Korsunsky I, Millard N, Fan J, Slowikowski K, Zhang F, Wei K, Baglaenko Y, Brenner M, Loh PR, Raychaudhuri S. 2019. Fast, sensitive and accurate integration of single-cell data with harmony. *Nat Methods* **16**: 1289–1296. doi:10.1038/s41592-019-0619-0
- Lee DH. 2013. Pseudo-label: the simple and efficient semi-supervised learning method for deep neural networks. In *International Conference on Machine Learning (ICML) 2013 Workshop: Challenges in Representation Learning (WREPL)*. ICML, Atlanta.
- Lopez R, Regier J, Cole MB, Jordan MI, Yosef N. 2018. Deep generative modeling for single-cell transcriptomics. *Nat Methods* **15**: 1053–1058. doi:10.1038/s41592-018-0229-2
- Ma S, Sun S, Geng L, Song M, Wang W, Ye Y, Ji Q, Zou Z, Wang S, He X, et al. 2020. Caloric restriction reprograms the single-cell transcriptional landscape of *Rattus norvegicus* aging. *Cell* **180**: 984–1001. doi:10.1016/j.cell.2020.02.008
- McInnes L, Healy J, Melville J. 2020. UMAP: uniform manifold approximation and projection for dimension reduction. arXiv:1802.03426 [stat.ML].
- Oliver A, Odena A, Raffel CA, Cubuk ED, Goodfellow I. 2018. Realistic evaluation of deep semi-supervised learning algorithms. In *Advances in neural information processing systems*, Vol. 31 (ed. Bengio S, et al.), pp. 3235–3246. Curran Associates, Red Hook, NY.
- Platt JC. 1999. Probabilistic outputs for support vector machines and comparisons to regularized likelihood methods. In *Advances in large margin classifiers* (ed. Smola AJ, et al.), pp. 61–74. MIT Press, Cambridge, MA.
- Pliner HA, Shendure J, Trapnell C. 2019. Supervised classification enables rapid annotation of cell atlases. *Nat Methods* **16**: 983–986. doi:10.1038/s41592-019-0535-3
- Sohn K, Berthelot D, Li CL, Zhang Z, Carlini N, Cubuk ED, Kurakin A, Zhang H, Raffel C. 2020. FixMatch: simplifying semi-supervised learning with consistency and confidence. In *Advances in Neural Information Processing Systems* (ed. Larochelle H, et al.), pp. 596–608. Curran Associates, Red Hook, NY.
- Srivastava N, Hinton GE, Krizhevsky A. 2014. Dropout: a simple way to prevent neural networks from overfitting. *J Mach Learn Res* **15**: 1929–1958.
- Srivatsan SR, McFaline-Figueroa JL, Ramani V, Saunders L, Cao J, Packer J, Pliner HA, Jackson DL, Daza RM, Christiansen L, et al. 2020. Massively multiplex chemical transcriptomics at single cell resolution. *Science* **367**: 45–51. doi:10.1126/science.aax6234
- Stuart T, Butler A, Hoffman P, Hafemeister C, Papalexi E, Mauck WM III, Hao Y, Stoeckius M, Smibert P, Satija R. 2019. Comprehensive integration of single-cell data. *Cell* **177**: 1888–1902.e1. doi:10.1016/j.cell.2019.05.031
- Sundararajan M, Taly A, Yan Q. 2017. Axiomatic attribution for deep networks. In *Proceedings of the 34th International Conference on Machine Learning*, Proceedings of Machine Learning Research, Sydney, Australia (ed. Precup D, Teh YW), Vol. 70, pp. 3319–3328.
- Svensson V, Vento-Torres R, Teichmann SA. 2018. Exponential scaling of single-cell RNA-seq in the past decade. *Nat Protoc* **13**: 599–604. doi:10.1038/nprot.2017.149
- Svensson V, da Veiga Beltrame E, Pachter L. 2020. A curated database reveals trends in single-cell transcriptomics. *Database* **2020**: Baaa073. doi:10.1093/database/baaa073
- The Tabula Muris Consortium. 2018. Single-cell transcriptomics of 20 mouse organs creates a tabula muris. *Nature* **562**: 367–372. doi:10.1038/s41586-018-0590-4
- Tan Y, Cahan P. 2019. SingleCellNet: a computational tool to classify single cell RNA-Seq data across platforms and across species. *Cell Syst* **9**: 207–213.e2. doi:10.1016/j.cels.2019.06.004
- Tanay A, Regev A. 2017. Scaling single-cell genomics from phenomenology to mechanism. *Nature* **541**: 331–338. doi:10.1038/nature21350
- Thulasidasan S, Chennupati G, Bilmes JA, Bhattacharya T, Michalak S. 2019. On mixup training: improved calibration and predictive uncertainty for deep neural networks. *Advances in Neural Information Processing Systems* **32**: 13888–13899.
- Tran HTN, Ang KS, Chevrier M, Zhang X, Lee NYS, Goh M, Chen J. 2020. A benchmark of batch-effect correction methods for single-cell RNA sequencing data. *Genome Biol* **21**: 12. doi:10.1186/s13059-019-1850-9
- Trapnell C. 2015. Defining cell types and states with single-cell genomics. *Genome Res* **25**: 1491–1498. doi:10.1101/gr.190595.115
- Verma V, Lamb A, Kannala J, Bengio Y, Lopez-Paz D. 2019. Interpolation consistency training for semi-supervised learning. In *Proceedings of the 28th International Joint Conference on Artificial Intelligence, IJCAI'19*, pp. 3635–3641. AAAI Press, Palo Alto, CA.
- Wilson G, Cook DJ. 2020. A survey of unsupervised deep domain adaptation. *ACM Trans Intell Syst Technol* **11**: 1–46. doi:10.1145/3400066
- Xu C, Lopez R, Mehlman E, Regier J, Jordan MI, Yosef N. 2021. Probabilistic harmonization and annotation of single-cell transcriptomics data with deep generative models. *Mol Syst Biol* **17**: e9620. doi:10.15252/msb.20209620
- Zeiler MD. 2012. ADADELTA: an adaptive learning rate method. arXiv:1212.5701 [cs.LG].
- Zhang H, Cisse M, Dauphin YN, Lopez-Paz D. 2018. Mixup: beyond empirical risk minimization. In *International Conference on Learning Representations*, Stockholm.
- Zhang AW, O'Flanagan C, Chavez EA, Lim JLP, Ceglia N, McPherson A, Wiens M, Walters P, Chan T, Hewitson B, et al. 2019. Probabilistic cell-type assignment of single-cell RNA-seq for tumor microenvironment profiling. *Nat Methods* **16**: 1007–1015. doi:10.1038/s41592-019-0529-1
- Zhong E, Fan W, Yang Q, Verscheure O, Ren J. 2010. Cross validation framework to choose amongst models and datasets for transfer learning. In *Machine learning and knowledge discovery in databases, lecture notes in computer science* (ed. Balczar JL, et al.), pp. 547–562. Springer, Berlin.

Received July 30, 2020; accepted in revised form February 18, 2021.