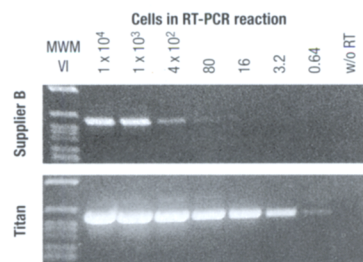


## Titan™ One Tube RT-PCR System . . . Take RT-PCR Sensitivity and Convenience to New Heights

Like to top the RT-PCR performance you're getting from M-MuLV RNase H<sup>-</sup> Reverse Transcriptase and *Taq*? With higher yields and no requirement to change buffers between the RT and PCR steps? By switching to Boehringer Mannheim's Titan™ One Tube RT-PCR System, now you can!

### Exceed the sensitivity limits of the two-step RT-PCR method

In side-by-side comparisons, the Titan System delivers superior sensitivity, detecting mRNAs in a single cell equivalent, while the traditional two-step method using an RNase H<sup>-</sup> RT and *Taq* requires 400 cell equivalents for detection!



**RT-PCR of  $\beta$ -actin transcript from K562 cells.** The Titan System delivers results that are >100 times more sensitive than those of Supplier B's M-MuLV RNase H<sup>-</sup> + *Taq* RT-PCR method.

### Achieve better results with less effort

- **specificity**—Perform RT reactions at elevated temperatures (50–60°C) to overcome problems arising from complex secondary structures. By minimizing false priming, this ensures better PCR specificity.
- **convenience**—Avoid the need to change buffers between the RT reaction and PCR with this “set up and walk away” system. This eliminates 4 pipetting steps and reduces the need for additional optimization. You'll increase the reliability of your results while reducing the risk of contamination.

### Switch to the Titan System today!

Enjoy improved results and productivity by ordering a trial size (Cat. No. 1888 382, 25 reactions) of the Titan™ One Tube RT-PCR System from Boehringer Mannheim—your Partner for Premium Performance RT-PCR.

Titan™ is a trademark of Boehringer Mannheim. Purchase of this product is accompanied by a limited license to use it in the Polymerase Chain Reaction (PCR) process for life science research in conjunction with a thermal cycler whose use in the automated performance of the PCR process is covered by the up-front license fee, either by payment to Perkin-Elmer or as purchased, i.e., an authorized thermal cycler.



**BOEHRINGER  
MANNHEIM**



Internet <http://biochem.boehringer-mannheim.com>

Australia (02) 899 7999; Austria (0222) 277 87; Belgium (02) 247 4930; Brazil 55 11 66 3565; Canada (514) 686 7050; (800) 361 2070; Chile 00 56 (2) 22 33 737; China 86 21 6416 4320; Czech Republic (0324) 45 54, 58 71-2; Denmark 49 13 82 32; Finland (90) 429 2342; France 04 76 76 30 86; Germany (0621) 759 8545; Greece (01) 67 40 238; Hong Kong (852) 2485 7596; India (22) 837 0794; Indonesia 62 (21) 520 2820; Israel 972-3-6 49 31 11; Italy 02 270 96209; Japan 03 3432 3155; Malaysia 60 (03) 755 5039; Mexico (5) 227 8967-61; Netherlands (036) 539 4911; New Zealand (09) 276 4157; Norway 22 07 65 00; Poland (22) 36 06 77-87; Portugal (01) 417 17 17; Republic of Ireland 1 800 409041; Russia (49) 621 759 8636; Singapore/Philippines 65 272 7500; South Africa (011) 886 2400; South Eastern Europe +43 (1) 277 87; South Korea (02) 569 6902; Spain (93) 201 4411; Sweden (08) 404 88 00; Switzerland 0 417 99 6161; Taiwan (02) 736 7125; Thailand 66 (2) 274 0708-13; Turkey 1 349 81 76-79; United Kingdom (0800) 521 578; USA (800) 428 5433.

© 1996 Boehringer Mannheim. All Rights Reserved.

# GENOME RESEARCH

Volume 7 Number 3  
March 1997

## Editors

---

**Mark Boguski**  
National Center for Biotechnology  
Information, NIH  
**Aravinda Chakravarti**  
Case Western Reserve University  
**Richard Gibbs**  
Baylor College of Medicine

**Eric Green**  
National Human Genome  
Research Institute  
**Richard Myers**  
Stanford University School of Medicine

## Managing Editor

---

**Judy Cuddihy**  
Cold Spring Harbor Laboratory

## News and Reviews Editor

---

**Alison Stewart**  
Cambridge, U.K.

## Editorial Board

---

**Rakesh Anand**  
Zeneca Pharmaceuticals  
**Stylianios Antonarakis**  
University of Geneva  
**Charles Auffray**  
CNRS  
**Philip Avner**  
Institut Pasteur  
**Andrea Ballabio**  
Telethon Institute of Genetics and  
Medicine  
**David Bentley**  
The Sanger Centre  
**Bruce Birren**  
Whitehead Institute/MIT Center for  
Genome Research  
**Michael Boehnke**  
University of Michigan School of  
Public Health  
**Anne Bowcock**  
University of Texas Southwestern  
Medical Center  
**David Burke**  
University of Michigan Medical School  
**Jeffrey Chamberlain**  
University of Michigan Medical School  
**Ellson Chen**  
Perkin-Elmer Corporation  
**David R. Cox**  
Stanford University School of Medicine  
**Ronald W. Davis**  
Stanford University School of Medicine  
**Richard Durbin**  
Sanger Centre, UK  
**Joseph Ecker**  
University of Pennsylvania  
**Beverly S. Emanuel**  
Children's Hospital of Philadelphia  
**Raymond Fenwick**  
Biodale Laboratories  
**Chris Fields**  
National Center for Genome Resources  
**Simon Foote**  
Walter and Eliza Hall Institute of  
Medical Research

**Phil Green**  
University of Washington  
**Kenshi Hayashi**  
Kyushu University  
**Philip Hieter**  
The Johns Hopkins University School  
of Medicine  
**Clare Huxley**  
St. Mary's Hospital Medical School  
**Howard J. Jacob**  
Massachusetts General Hospital-East  
**Alec Jeffreys**  
University of Leicester  
**Mark Johnston**  
Washington University School of  
Medicine  
**Mary-Claire King**  
University of Washington  
**Ben Koop**  
University of Victoria  
**Pui-Yan Kwok**  
Washington University School of  
Medicine  
**Ulf Landegren**  
Uppsala Biomedical Center  
**Mark Lathrop**  
The Wellcome Trust Centre  
**Michael Lovett**  
University of Texas Southwestern  
Medical Center  
**Jen-i Mao**  
Genome Therapeutics Corporation  
**Douglas Marchuk**  
Duke University Medical Center  
**Thomas Marr**  
Cold Spring Harbor Laboratory  
**W. Richard McCombie**  
Cold Spring Harbor Laboratory  
**Susan Naylor**  
University of Texas Health Science  
Center  
**David Nelson**  
Baylor College of Medicine

**Maynard Olson**  
University of Washington  
**Svante Pääbo**  
University of Munich  
**Leena Peltonen**  
National Public Health Institute, Helsinki  
**David Porteous**  
MRC Human Genetics Unit  
Western General Hospital, Edinburgh  
**Roger Reeves**  
Johns Hopkins University School of  
Medicine  
**Bruce Roe**  
University of Oklahoma  
**Rodney Rothstein**  
Columbia University College of P&S  
**Gerald Rubin**  
University of California, Berkeley  
**Lloyd Smith**  
University of Wisconsin-Madison  
**Randall Smith**  
Baylor College of Medicine  
**Marcelo Bento Soares**  
Columbia University and the New  
York State Psychiatric Institute  
**William Studier**  
Brookhaven National Laboratory  
**Grant Sutherland**  
Women's and Children's Hospital,  
Adelaide  
**Barbara Trask**  
University of Washington  
**Gert-Jan B. van Ommen**  
Leiden University  
**Robert B. Weiss**  
University of Utah  
**Jean Weissenbach**  
Genethon, CNRS  
**Richard Wilson**  
Washington University School of  
Medicine  
**James Womack**  
Texas A&M University

## Editorial Office

---

Cold Spring Harbor Laboratory Press  
1 Bungtown Road  
Cold Spring Harbor, New York 11724  
Phone (516) 367-8492  
Fax (516) 367-8334  
<http://www.cshl.org>

## Editorial/Production

---

Nadine Dumser, Technical Editor  
Kristin Kraus, Production Editor  
Cynthia Grimm, Production Assistant  
Doris Lawrence, Editorial Secretary


## REVIEW

- |  |   |     |
|--|---|-----|
| Microfabrication Technologies for Integrated Nucleic Acid Analysis | David T. Burke, Mark A. Burns, and Carlos Mastrangelo | 189 |
|--|---|-----|

## RESEARCH

- |   |  |     |
|---|--|-----|
| Genome DNA Sequencing Around the <i>EF-1<math>\alpha</math></i> Multigene Locus of <i>Arabidopsis thaliana</i> Indicates a High Gene Density and a Shuffling of Noncoding Regions | Dominique Tremousaygue, Claude Bardet, Patrick Dabos, Farid Regad, Florence Pelese, Rana Nazer, Eugene Gander, and Bernard Lescure   | 198 |
| X Chromosome Map at 75-kb STS Resolution, Revealing Extremes of Recombination and GC Content  | Ramaiah Nagaraja, Sandra MacMillan, Juha Kere, Carmela Jones, Stephanie Griffin, Matthew Schmatz, Jennifer Terrell, Michael Shomaker, Christopher Jermak, Christian Hott, Mochubeloa Masisi, Steven Mumm, Anand Srivastava, Giuseppe Pilia, Terence Featherstone, Richard Mazzarella, Sheila Kesterson, Brigid McCauley, Brian Railey, Frank Burough, Volker Nowotny, Michele D'Urso, David States, Bernard Brownstein, and David Schlessinger | 210 |
| Identification of the Complete Coding Sequence and Genomic Organization of the Treacher Collins Syndrome Gene   | Jill Dixon, Sara J. Edwards, Isobel Anderson, Andrew Brass, Peter J. Scambler, and Michael J. Dixon  | 223 |
| A Second-Generation Linkage Map of the Bovine Genome  | Steven M. Kappes, John W. Keele, Roger T. Stone, Royal A. McGraw, Tad S. Sonstegard, Timothy P.L. Smith, Nestor L. Lopez-Corrales, and Craig W. Beattie  | 235 |



One-Megabase Sequence Analysis of the Human Immunoglobulin $\lambda$ Gene Locus	Kazuhiko Kawasaki, Shinsei Minoshima, Eriko Nakato, Kazunori Shibuya, Ai Shintani, James L. Schmeits, Jun Wang, and Nobuyoshi Shimizu	250
Phylogenetics of the Laboratory Rat <i>Rattus norvegicus</i>	Federico Canzian	262
Large-Scale Sequencing in Human Chromosome 12p13: Experimental and Computational Gene Structure Determination	M. Ali Ansari-Lari, Ying Shen, Donna M. Muzny, William Lee, and Richard A. Gibbs	268
2006 Expressed-Sequence Tags Derived from Human Chromosome 7-Enriched cDNA Libraries	Jeffrey W. Touchman, Gerard G. Bouffard, Lauren A. Weintraub, Jacquelyn R. Idol, Luping Wang, Christiane M. Robbins, Jesse C. Nussbaum, Michael Lovett, and Eric D. Green	281 GR 

## GENOME METHODS

Rapid Sequence Analysis of Gene Trap Integrations to Generate a Resource of Insertional Mutations in Mice	David J. Townley, Brian J. Avery, Barry Rosen, and William C. Skarnes	293
Erratum		299

Product News	300
--------------	-----



Articles labeled with this symbol have additional data presented electronically on the journal's WWW site found at <http://www.cshl.org/gr> (follow the links from "online supplements.")

**COVER** Integrated microfabrication technologies. Shown is an optical photograph overview of a silicon wafer with several  $1.25 \times 1.25$ -cm DNA processing units, each containing about 30 different electrophoresis channel and photodiode configurations. (For details, see Burke et al., p. 189).