

GENOME...call for papers!

RESEARCH



In August 1995, Cold Spring Harbor Laboratory Press will begin publication of a new, monthly, international, peer-reviewed journal, **GENOME RESEARCH**. The journal will focus on genome studies in all species, including genetic and physical mapping, DNA sequencing, gene discovery, informatics, statistical and mathematical methods and genome structure and function as well as technological innovations and applications. New data in these areas will be published as research papers, review articles, short reports, and summaries of physical mapping and large-scale sequencing projects.

GENOME RESEARCH will incorporate **PCR METHODS & APPLICATIONS**, which for the past 4 years has published practical papers describing amplification techniques and their use.

For copies of Instructions to Authors:

FAX: 516-367-8532 (OR) Cold Spring Harbor Laboratory Online <http://www.cshl.org/>

Editors

Aravinda Chakravarti
Case Western Reserve University
Richard Gibbs
Baylor College of Medicine
Eric Green
National Center for Human Genome
Research, NIH
Richard Myers
Stanford University School of Medicine
Editorial Board (partial listing)
Rakesh Anand
Zeneca Pharmaceuticals
Stylianios Antonarakis
University of Geneva
Charles Auffray
CNRS
Philip Avner
Institut Pasteur
Andrea Ballabio
Telethon Institute of Genetics and Medicine
Bruce Birren
California Institute of Technology
Michael Boehnke
University of Michigan School of Public Health
Mark Boguski
National Center for Biotechnology/NIH
Anne Bowcock
University of Texas Southwestern Medical Center
David Burke
University of Michigan Medical School
Jeffrey Chamberlain
University of Michigan Medical School
Ellson Chen
Perkin-Elmer Corporation
David R. Cox
Stanford University School of Medicine
Richard Durbin
Sanger Centre
Joseph Ecker
University of Pennsylvania
Raymond Fenwick
Biodale Laboratories

Chris Fields
National Center for Genome Resources
Simon Foote
Walter and Eliza Hall Institute of Medical
Research
Phil Green
University of Washington
Kenshi Hayashi
Kyushu University
Philip Hieter
The Johns Hopkins University School of Medicine
Clare Huxley
St. Mary's Hospital Medical School
Howard Jacob
Massachusetts General Hospital
Alec Jeffreys
University of Leicester
Mark Johnston
Washington University School of Medicine
Mary-Claire King
University of California School of Public Health
Ben Koop
University of Victoria
Pui-Yan Kwok
Washington University School of Medicine
Ulf Landegren
Uppsala Biomedical Center
Mark Lathrop
The Wellcome Trust Centre for Human Genetics
Michael Lovett
University of Texas Southwestern Medical Center
Jen-i Mao
Genome Therapeutics Corporation
Douglas Marchuk
Duke University Medical Center
Thomas Marr
Cold Spring Harbor Laboratory
W. Richard McCombie
Cold Spring Harbor Laboratory
Susan Naylor
University of Texas Health Science Center
Maynard Olson
University of Washington

Svante Paabo
University of Munich
Leena Peltonen
National Public Health Institute, Helsinki
David Porteous
MRC Human Genetics Unit
Western General Hospital, Edinburgh
Roger Reeves
Johns Hopkins University School of Medicine
Bruce Roe
University of Oklahoma
Rodney Rothstein
Columbia University College of P&S
Gerald Rubin
University of California, Berkeley
Lloyd Smith
University of Wisconsin-Madison
Randall Smith
Baylor College of Medicine
Marcelo Bento Soares
Columbia University and the New York State
Psychiatric Institute
William Studier
Brookhaven National Laboratory
Grant Sutherland
Women's and Children's Hospital, Adelaide
Barbara Trask
University of Washington
G.J.B. van Ommen
Leiden University
John Wasmuth
University of California, Irvine
Robert B. Weiss
University of Utah
Jean Weissenbach
Genethon, CNRS
Richard Wilson
Washington University School of Medicine
James Womack
Texas A&M University
Managing Editor
Judy Cuddihy
Cold Spring Harbor Laboratory

SUBSCRIPTION INFORMATION

Volume 5, 1995, contains 5 monthly issues (beginning August 1995)

Individual Price (U.S.) - \$70
Individual Price (R.O.W. airlift delivery) - \$115
Institutional Price (U.S.) - \$245
Institutional Price (R.O.W. airlift delivery) - \$290



Investigators are invited to submit papers to:
Judy Cuddihy, Managing Editor
Genome Research
Cold Spring Harbor Laboratory
One Bungtown Road
Cold Spring Harbor, NY 11724



Subscribe Today!

Cold Spring Harbor Laboratory Press

10 Skyline Drive
Plainview, N.Y. 11803-2500

Phone: 1-800-843-4388 or
516-349-1930

FAX: 516-349-1946

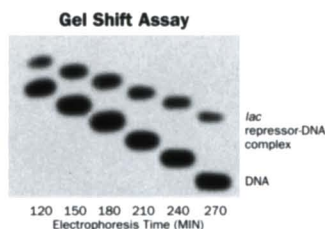
E-mail: cshpress@cshl.org at
World Wide Web Site
<http://www.cshl.org/>

For gel shift and mutation detection, MetaPhor[®] XR agarose is the easy choice.

Introducing the newest member of the MetaPhor family of agarose from FMC, MetaPhor XR. MetaPhor XR provides resolution that rivals polyacrylamide, in an easy-to-use format.

A wide range of resolution

MetaPhor XR's unique formula provides the widest separation range of DNA fragments of any highly resolving gel. So there is no



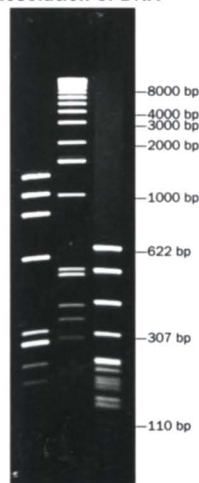
longer any need to pour several concentrations of agarose to separate DNA

fragments ranging from 60 bp up to 8 kb. In addition, this unique product is the first agarose capable of separating DNA based on conformational differences.

A wide range of uses

MetaPhor XR's ability to separate DNA conformers makes it ideal for mutation detection. For heteroduplex analysis, DNA differing

Wide-Range Resolution of DNA



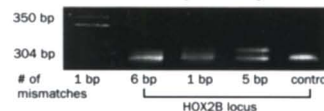
by a single base mismatch can be resolved in either a horizontal or vertical gel format. PCR*-SSCP analysis can detect DNA differing by a single base in a vertical gel format. Gel shift analysis can also be performed in either a horizontal or vertical gel format. MetaPhor XR's wide DNA separation range makes it ideal for separation of complex mixtures of PCR products, such as RAPDS, *Alu*-PCR, multiplexed PCR, from 60 bp up to 8 kb.

A wide range of reasons to choose MetaPhor XR

Best of all, MetaPhor XR combines high resolving power with an easy-to-use, non-toxic

format, making it the easy choice for mutation detection, gel shift analysis, and wide-range resolution of PCR products when compared to polyacrylamide.

Mutation Detection Heteroduplex Analysis



FMC[®]

For more information, call
800-341-1574 today.

Go straight to the source.

For Research Use Only. Not for use in diagnostic procedures. **FMC** and MetaPhor are registered trademarks of FMC Corporation. U.S. patent pending; applications in other countries. ©1995 FMC Corporation. FMC BioProducts, 191 Thomaston Street, Rockland, ME 04841. Customer Service: 800-341-1574 FAX: 800-362-5552 Technical Service: 800-521-0390 FAX: 800-362-1133 E-mail: BIOTECHSERVE@FMC.COM
*PCR process is covered by U.S. patents owned by Hoffmann-LaRoche, Inc.