



# Peltier Power

## Thermal cycling to 4°C for DNA amplification

Ericomp's lab-proven TwinBlock and SingleBlock Systems, popular research tools for the past seven years, are now available with an often-requested new feature: a thermoelectric heating and cooling option that adds the flexibility of self-contained temperature control from 4°C to 100°C.

## Dependable reproducibility

Using an in-sample monitor, these systems accurately and rapidly cycle samples in either of two optional formats: a 96-well microplate or 60 .5mL tubes.

## Proven reliability

Thousands of scientists since the advent of temperature cycling have used Ericomp's rugged "work-horse" cyclers because of their proven reliability in precise sample handling. Ericomp systems are engineered for performance and built to last. A 3 Year Warranty is standard.



## Reduced cost per sample

If your lab needs an economical alternative to temperature cycling that can fit easily into any budget, our cost-effective TwinBlock and SingleBlock Systems are the ideal solution. And if you don't need up to 190 sample capacity but do need economy, ask about the PowerBlock System, a multi-tasking MiniTwin cycler that can run two totally independent experiments simultaneously with up to 48 samples.

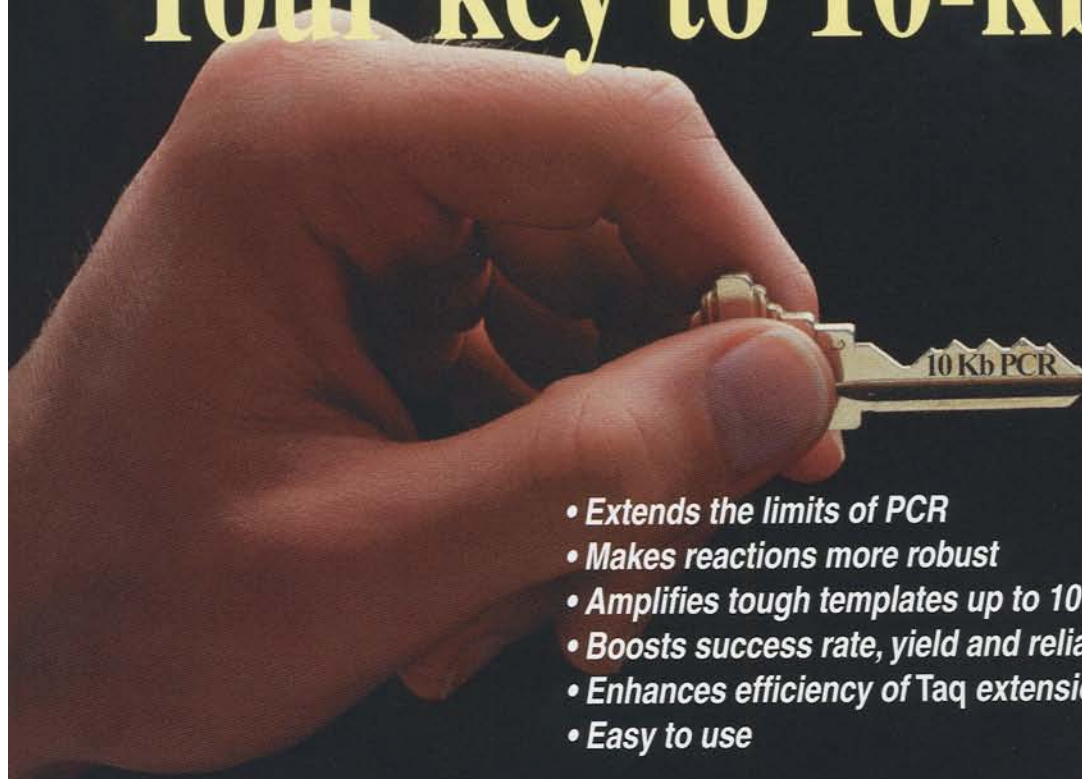
## Find out for yourself

Call 800-541-8471 today to discover how Ericomp temperature cyclers can save your lab time and money. Outside the US, call 619-457-1888 or fax 619-457-2937.



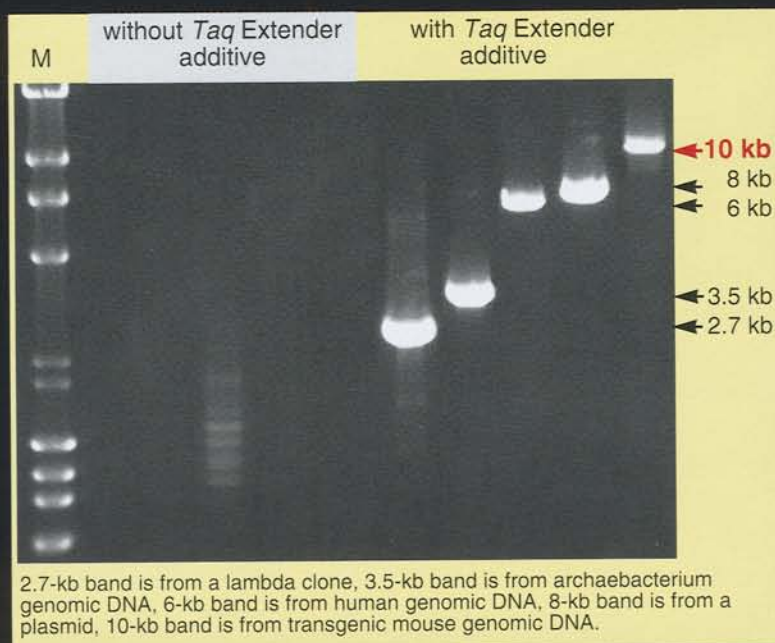
Ericomp, Inc. • 6044 Cornerstone Court West • San Diego, CA • 92121

# Your key to 10-kb PCR<sup>†</sup>



- Extends the limits of PCR
- Makes reactions more robust
- Amplifies tough templates up to 10 kb
- Boosts success rate, yield and reliability
- Enhances efficiency of Taq extensions
- Easy to use

## Stratagene's *Taq* Extender<sup>™</sup> PCR Additive



**Internet Mail**  
tech\_services@stratagene.com

**USA**  
**Corporate Headquarters**  
Telephone: (619) 535-5400  
Toll free: (800) 424-5444  
Telefax: (619) 535-0045

**Germany**  
**Stratagene GmbH**  
Telephone: (06221) 400634  
Telefax: (06221) 400639

**United Kingdom**  
**Stratagene Ltd.**  
Telephone: (0223) 420955  
Telefax: (0223) 420234

**Switzerland**  
**Stratagene GmbH**  
Telephone: (01) 3641106  
Telefax: (01) 3657707

***Unlock your PCR potential!***

***Call Stratagene or your Stratagene distributor  
to order this breakthrough product.***

**Taq Extender PCR additive  
Catalog # 600148**



<sup>†</sup> The Polymerase Chain Reaction (PCR) process is covered by patents owned by Hoffmann-La Roche. Use of the PCR process requires a license.



# Need a quotation for economic large scale oligonucleotide synthesis?



*“OligoPilot from Pharmacia Biotech offers the reproducibility and flexibility required to scale-up traditional oligonucleotide synthesis. The synthesizer's unique flow-through design, in*

*combination with the Pharmacia Biotech solid support, enables a high coupling efficiency to be maintained while minimizing reagent consumption. This potentially opens the way to economical pilot-scale production of highly pure oligonucleotides and their analogs.”*

Dr. Tadeusz K. Wyrzykiewicz, Isis Pharmaceuticals Inc., Carlsbad CA, U.S.A

Leading companies bringing medical applications of oligonucleotide technology closer to market already know how well OligoPilot™ DNA/RNA Synthesizer performs. You can read more of what they have to say in the new brochure. Ask for your copy today.

*OligoPilot. It's the breakthrough in economic, large scale oligonucleotide synthesis.*

*And you can quote us on that.*



Head office Sweden 46 (0)18 16 50 00 Australia 02 367 4200 Austria 01 68 66 25 Belgium 03 272 1923 Brazil 011 872 68 33 Canada 800 463 5800 Denmark 48 14 10 00 Finland 90 5021 077 France 130 64 34 00  
Germany 0761 49 030 Great Britain 0727 814000 Hong Kong 811 86 93 Holland 01650 80431 India 812 26 76 30 Italy 02 273 221 Japan 03 34 92 94 99 Malaysia 03 735 3972 Norway 63 89 23 10  
People's Republic of China 01 25 65 603 Portugal 01 417 24 72 Republic of Korea 02 511 0801 Spain 93 589 07 01 Sweden 08 623 85 00 Switzerland 41 1 802 81 50 Taiwan 02 831 5310 United States 800 526 3593 Eastern Europe  
+43-(0)1 982 38 26 Far East 852 811 8693 Latin America 55-11 872 68 33 Middle East 30 -(0)1 96 27 396 Other countries 46 (0)18 16 50 00 (9405)

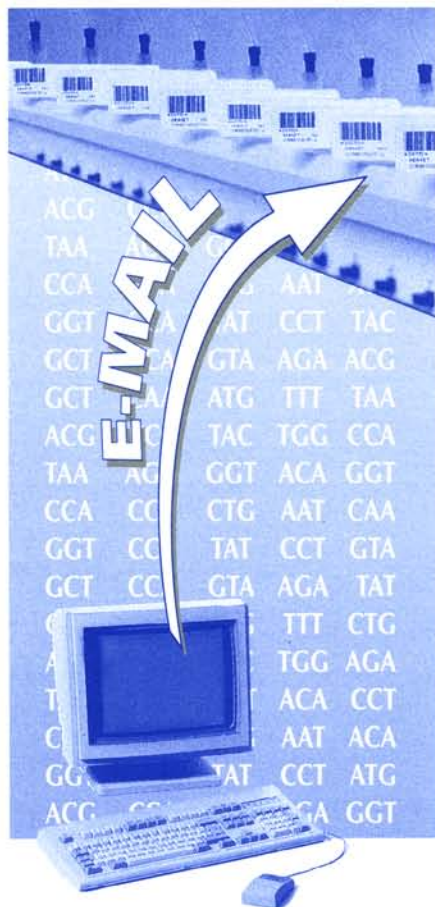
Reader Service No. 408





GUARANTEED OLIGOS™

**CONNECT  
YOURSELF TO OUR  
DNA  
SYNTHESIZERS**



**SEND YOUR SEQUENCES  
BY E-MAIL  
FOR DIRECT  
EXECUTION**

**USA**

ORDER AT : [oligos@gensetlj.com](mailto:oligos@gensetlj.com)

For quotation : [marketing@gensetlj.com](mailto:marketing@gensetlj.com)

**EUROPE & ASIA**

ORDER AT : [oligos@genset.fr](mailto:oligos@genset.fr)

For quotation : [marketing@genset.fr](mailto:marketing@genset.fr)

Reader Service No. 409



If you wish  
You Had an Extra Pair of Hands  
for your...

PCR DNA Sequencing  
PCR DNA Cloning  
Plasmid DNA Sequencing  
DNA Subcloning  
Library screening  
Plasmid Preparations

Call *ACGT, Inc.*

(Tel) 708-559-8631

(Fax) 708-559-8632

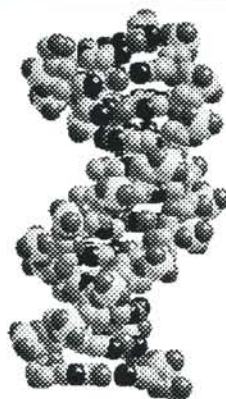
We Provide Complete Services  
at Very Competitive Prices with an  
*Unconditional Guarantee*

Reader Service No. 410

# OligOrganizer™

For the Macintosh

**Laboratory-Wide Database Mgmt System  
for Molecular Biology Experiments**



Oligonucleotide Design Support

Electronic Laboratory Notebook

Image Storage

Scheduling/Project Mgmt

PCR, Southern, Sequencing

Experiment Costing

Vendor Pricing, Online Ordering

Customized to Fit Your Laboratory!

**FREE DNA Double Helix Screen Saver!**

**1-800-7-PANGAEA**

Internet: [wk01985@worldlink.com](mailto:wk01985@worldlink.com)

# PANGAEA SYSTEMS

**Programming Power to the People**

Reader Service No. 411

## Your Next PCR Cloning System Should Have:

- **An Ultra-Stable Vector**
- **High Efficiency Ligation**
- **Only 90 min. from PCR Product to Plated Bacteria**

### No Hidden Steps, No Excuses

No matter what your level of PCR experience, the **Prime PCR Cloner™** kit is the complete answer to your cloning needs. Our high efficiency shuttle vector (pNoTA, 2.7 kb size) is stable for **at least 1 year** and contains an exceptionally versatile multiple cloning site. Optimized blunt end ligation typically provides insert yields of >90% for 600 bp products and 80+% for 1900 bp products. A 15 kbp genomic fragment has been inserted into this vector using the kit! Spin column cleanup minimizes false positives by removing "Primer-Dimers" and small PCR products. All this in *only* an hour and a half from start to finish. For more information or to receive a protocol, call or fax us at

**Tel: 800-533-5703 Fax: 303-440-0835**

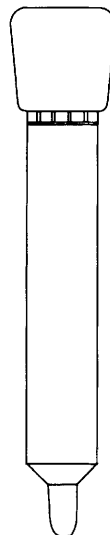
5 Prime → 3 Prime, Inc. 5603 Arapahoe Ave. Boulder CO 80303



Reader Service No. 412

## Oh! Drat! No PCR Product in ANY of the White Colonies!

### PCR SELECT® Columns



Actual Size

- Removes dNTPs, DNA polymerase, mineral oil, short primers, small fragments and "Primer-Dimers" from PCR reactions in 6 minutes!
  - 3 Different Cutoffs:
    - SELECT® I for >20 bp
    - SELECT® II for >100 bp
    - SELECT® III for >300 bp
  - >80% DNA recovery with >99% removal of dNTPs
  - Minimizes false positives
  - Works with any cloning kit
- For more information, call or fax us at

**Tel: 800-533-5703**

**Fax: 303-440-0835**

5 Prime → 3 Prime, Inc.  
5603 Arapahoe Ave. Boulder CO 80303



Reader Service No. 413

## Business Information

**Editorial Office:** Cold Spring Harbor Laboratory Press, 1 Bungtown Road, Cold Spring Harbor, New York 11724-2203. Phone: 516-367-8492; FAX 516-367-8532.

*PCR Methods and Applications* (ISSN 1054-9803) is published bimonthly for \$276 (U.S. institutional; \$292 R.O.W.), \$89.00 (individual making personal payment; \$105 R.O.W. surface, \$32 additional for airmail) by Cold Spring Harbor Laboratory Press, 1 Bungtown Road, Cold Spring Harbor, New York 11724. Second class postage pending is paid at Cold Spring Harbor and additional mailing offices. POSTMASTER: Send address changes to Cold Spring Harbor Laboratory, 10 Skyline Drive, Plainview, New York 11803-9729.

**Subscriptions:** Barbara Terry, Subscription Manager. Personal: U.S. \$89; R.O.W. \$105 surface mail, \$32 additional airlift delivery. Institutional: U.S. \$276; R.O.W. \$292. Orders may be sent to Cold Spring Harbor Laboratory Press, Fulfillment Department, 10 Skyline Drive, Plainview, New York 11803-9729. Telephone: Continental U.S. and Canada 1-800-843-4388; all other locations 516-349-1930. FAX 516-349-1946. Personal subscriptions must be prepaid by personal check, credit card, or money order. Claims for missing issues must be received within 4 months of issue date.

**Advertising:** Nancy Kuhle, Advertising Manager, Cold Spring Harbor Laboratory Press, 1 Bungtown Road, Cold Spring Harbor, New York, 11724-2203. Phone: 516-367-8351; FAX 516-367-8532.

**Copyright information:** Authorization to photocopy items for internal or personal use, or the internal or personal use of specific clients, is granted

by Cold Spring Harbor Laboratory Press for libraries and other users registered with the Copyright Clearance Center (CCC) Transactional Reporting Service, provided that the base fee of \$5.00 per copy is paid directly to CCC, 21 Congress Street, Salem, Massachusetts 01970 (1054-9803/94 + \$5.00). This consent does not extend to other kinds of copying, such as copying for general distribution for advertising or promotional purposes, for creating new collective works, or for resale.

The methods, products, instructions or ideas contained in or suggested by this journal should be used only by experienced scientific researchers and only in accordance with prudent laboratory safety precautions. Their use by inexperienced or improperly trained individuals could result in serious injury. The publisher does not endorse the claims made by the advertisers in this journal.

Copyright © 1994 by Cold Spring Harbor Laboratory Press



**PERKIN ELMER**

is pleased to sponsor the meeting:

# **A Decade of PCR**

*In Celebration of Ten Years of Amplification*

# **PCR**

*to be held at*

**Cold Spring Harbor Laboratory**

**12 - 14 September, 1994**

**Perspective by Kary Mullis, Nobel Laureate**

**Topics to be covered will include:**

- Biology of PCR
- PCR in the Human Genome Project
- PCR in diagnostics
- RNA differential display
- *In situ* PCR
- Microfabricated systems for PCR
- PCR products on microchips
- PCR automation
- Forensic science by PCR analysis
- Ancient DNA

**For further information please contact:**

**Cold Spring Harbor Laboratory  
Meetings Office**

**P.O. Box 100, Cold Spring Harbor, N.Y. 11724-2213**

**Telephone: (516) 367-8346 ♦ Fax: (516) 367-8845 ♦ E-Mail : [meetings@cshl.org](mailto:meetings@cshl.org)**



## Powerful security

At the watering hole, even rhinos and lions defer to the African elephant – secure in its extended family group. Unparalleled loyalty and powerful communal defense provide this gentle creature with a peace of mind shared by few inhabitants of the African savannah.

Using Boehringer Mannheim's family of high-performance PCR products will give you a similar peace of mind.

### Products designed to work together

For you, function-tested PCR products translate into successful PCR – PCR without failed experiments or time wasted repeating experiments. You'll achieve consistent, reproducible results with PCR products such as:

**PCR Master Mix** – a ready-to-use amplification premix

**PCR Optimization Kit** – PCR buffers and reagents for determining the  $Mg^{2+}$  concentration and pH value optimal for your primer/template combination

**PCR Core Kit<sup>PLUS</sup>** – high-yield PCR plus prevention of carry-over contamination

**1st Strand cDNA Synthesis Kit for RT-PCR (AMV)** – for efficient preparation of PCR templates from RNA.

### A full-service focus

Get everything you need for polymerase chain reactions – template preparation to amplification to analysis of amplified DNA – from your single-source PCR supplier.

In addition to quality products, several customer-focused services combine to provide you with this peace of mind:

- **Accurate, complete orders** that are right the first time
- **Next business day delivery**, so you have the products when you need them 
- **Highly trained technical representatives** for all your product information needs
- **Field representatives** to help you attain your research objectives.

### Pursue peace of mind for your lab

Achieve peace of mind by relying on Boehringer Mannheim for all your PCR needs. Contact your representative for more information, or call us at 1-800-428-5433 (514-686-7141 in Canada).

These products are sold under licensing arrangements with Roche Molecular Systems and The Perkin-Elmer Corporation. Purchase of these products is accompanied by a license to use them in the Polymerase Chain Reaction (PCR) process in conjunction with an Authorized Thermal Cycler.

Federal Express trademark used by permission.

© 1994 Boehringer Mannheim. All Rights Reserved.



Biochemicals

**BOEHRINGER MANNHEIM Corporation**

9115 Hague Road  
P.O. Box 50414  
Indianapolis, IN 46250-0414  
USA





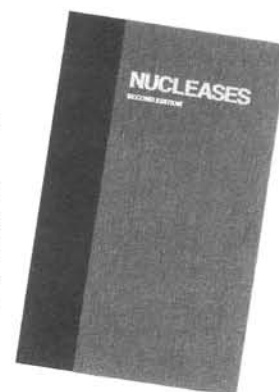
## Nucleases, Second Edition

Monograph 25

Edited by Stuart M. Linn, *University of California, Berkeley*; R. Stephen Lloyd, *University of Texas Medical Branch, Galveston*; Richard J. Roberts, *New England Biolabs*

The 1982 publication *Nucleases* was the first book to survey this diverse and important group of enzymes. The new edition has been completely revised and updated. It provides a comprehensive review of all classes of nucleases, their modes of action and biological significance. The book is an invaluable source of information for investigators of DNA replication, recombination and repair and RNA processing, and for everyone interested in the rational use of nucleases as research reagents.

1993, 499 pp., illus., color plates, appendices, index  
Cloth \$75 ISBN 0-87969-426-2



## The RNA World

Monograph 24

Edited by Raymond F. Gesteland, *University of Utah*; John F. Atkins, *University of Utah*. With Foreword by Francis Crick and Prologue by James D. Watson

"The lively and authoritative chapters of this book deal comprehensively both with the hypothetical RNA world and with the complexities of RNA structure and function we find around us today. I recommend it to all molecular biologists and especially to anyone fascinated by the baroque complexity of the nucleic acids and of RNA in particular."

—Francis Crick

1993, 632 pp., illus., color plates, appendices, index  
Cloth \$95 ISBN 0-87969-380-0



## Reverse Transcriptase

Monograph 23

Edited by Anna Marie Skalka, *Fox Chase Cancer Center*; Stephen P. Goff, *Columbia University College of Physicians & Surgeons*

The first comprehensive review of the enzyme's biology. Includes rare discussions of RT's functions outside the context of retroviruses, the latest structural data on RT and a review of the antiviral activity of the enzyme's inhibitors.

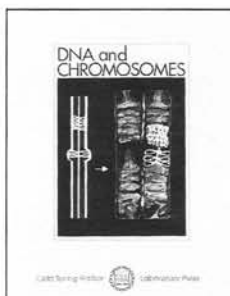
1993, 492 pp., illus., index  
Cloth \$85 ISBN 0-87969-382-7



## DNA and Chromosomes

*Cold Spring Harbor Symposia on Quantitative Biology*, Volume LVIII

Over 70 of the world's leading investigators discuss how DNA is replicated and repaired, genes are activated, silenced and transcribed, chromosomes replicate and move, and genomes are constructed. A unique compilation of recent insights into the most pressing questions in molecular genetics and cell biology.



### Proceedings of the 1993 Symposium

Due first quarter 1994, 950 pp. (approx.), illus., color plates, indexes

Cloth \$210

ISBN 0-87969-065-8

Paper \$95

ISBN 0-87969-066-6

## Genome Rearrangement and Stability

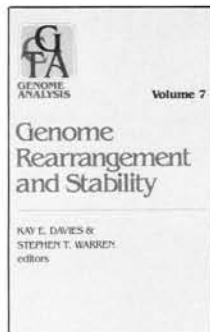
*Genome Analysis, Volume 7*

Edited by Kay E. Davies, *MRC Clinical Sciences Centre, Royal Postgraduate Medical School, London*; Stephen T. Warren, *Emory University School of Medicine, Howard Hughes Medical Institute*

The first book on the role of repetitive genomic sequences in the origins of human disorders such as fragile X syndrome, myotonic dystrophy and Huntington's disease. Also reviews studies in organisms such as yeast and trypanosomes that are illuminating the function of DNA once thought of as "junk."

1993, 165 pp., illus., index

Cloth \$49 ISBN 0-87969-388-6



### To order, or request additional information:

Call: 1-800-843-4388 (Continental US and Canada) 516-349-1930 (All other locations)

FAX: 516-349-1946

Write: CSHL Press, 10 Skyline Drive, Plainview, N.Y. 11803







# ORDER FORM

For Fastest Service—  
Call:

**1-800-843-4388**

—Continental U.S.  
and Canada

**516-349-1930**

—All other locations

FAX:

**516-349-1946**



**COLD SPRING HARBOR  
LABORATORY PRESS**  
Plainview, NY 11803-2500



(Six issues beginning August, 1994)

- ☐ Individual price (U.S.) - \$89
- ☐ Individual price (R.O.W. Surface Delivery) - \$105
- ☐ Individual price (R.O.W. Airlift Delivery) - \$137
- ☐ Student price (U.S.) - \$65\*
- ☐ Student price (R.O.W. Surface Delivery) - \$85\*
- ☐ Institutional price (U.S.) - \$276
- ☐ Institutional price (R.O.W. Surface Delivery) - \$292
- ☐ Institutional price (R.O.W. Airlift Delivery) - \$324
- ☐ Please send me a sample issue.

\*Those who qualify must provide student I.D.

Personal orders must be prepaid by personal check, credit card or money order.

☐ Check or money order enclosed (U.S. Bank Checks Only)

Charge to: ☐ MASTERCARD ☐ VISA ☐ AMERICAN EXPRESS ☐ DISCOVER

ACCOUNT NO. \_\_\_\_\_ EXP. \_\_\_\_\_

SIGNATURE \_\_\_\_\_ TEL. \_\_\_\_\_

NAME \_\_\_\_\_

ADDRESS \_\_\_\_\_

CITY/STATE/ZIP \_\_\_\_\_

COUNTRY \_\_\_\_\_

**TEL: Continental U.S. and Canada: 1-800-843-4388 ISSN 1054-9803**  
**All other locations: 516-349-1930 FAX: 516-349-1946**

All prices subject to change without notice.

**Orders for Japan:** Maruzen Company Ltd., 3 - 10, Nihonbashi 2-Chome, Chuo-ku, Tokyo, 103 Japan. **Orders for Taiwan:** Unimed Healthcare, Inc., 3F, No. 74, Song-te Road, Taiwan, R.O.C.



**VOLUME 4, 1994/95, BIMONTHLY**  
(Six issues beginning August, 1994)

- ☐ Individual price (U.S.) - \$89
- ☐ Individual price (R.O.W. Surface Delivery) - \$105
- ☐ Individual price (R.O.W. Airlift Delivery) - \$137
- ☐ Student price (U.S.) - \$65\*
- ☐ Student price (R.O.W. Surface Delivery) - \$85\*
- ☐ Institutional price (U.S.) - \$276
- ☐ Institutional price (R.O.W. Surface Delivery) - \$292
- ☐ Institutional price (R.O.W. Airlift Delivery) - \$324
- ☐ Please send me a sample issue.

\*Those who qualify must provide student I.D.

Personal orders must be prepaid by personal check, credit card or money order.

☐ Check or money order enclosed (U.S. Bank Checks Only)

Charge to: ☐ MASTERCARD ☐ VISA ☐ AMERICAN EXPRESS ☐ DISCOVER

ACCOUNT NO. \_\_\_\_\_ EXP. \_\_\_\_\_

SIGNATURE \_\_\_\_\_ TEL. \_\_\_\_\_

NAME \_\_\_\_\_

ADDRESS \_\_\_\_\_

CITY/STATE/ZIP \_\_\_\_\_

COUNTRY \_\_\_\_\_

**TEL: Continental U.S. and Canada: 1-800-843-4388 ISSN 1054-9803**  
**All other locations: 516-349-1930 FAX: 516-349-1946**

All prices subject to change without notice.

**Orders for Japan:** Maruzen Company Ltd., 3 - 10, Nihonbashi 2-Chome, Chuo-ku, Tokyo, 103 Japan. **Orders for Taiwan:** Unimed Healthcare, Inc., 3F, No. 74, Song-te Road, Taiwan, R.O.C.



**VOLUME 4, 1994/95, BIMONTHLY**  
(Six issues beginning August, 1994)

**Please pass this order form to your librarian  
so that your colleagues can see PCR METHODS  
AND APPLICATIONS in your library.**

- ☐ Institutional price (U.S.) - \$276
- ☐ Institutional price (R.O.W. Surface Delivery) - \$292
- ☐ Institutional price (R.O.W. Airlift Delivery) - \$324
- ☐ Please send me a sample issue.

PURCHASE ORDER NO. \_\_\_\_\_

NAME \_\_\_\_\_

ORGANIZATION \_\_\_\_\_

ADDRESS \_\_\_\_\_

CITY/STATE/ZIP \_\_\_\_\_

COUNTRY \_\_\_\_\_

**TEL: Continental U.S. and Canada: 1-800-843-4388 ISSN 1054-9803**  
**All other locations: 516-349-1930 FAX: 516-349-1946**

All prices subject to change without notice.

**Orders for Japan:** Maruzen Company Ltd., 3 - 10, Nihonbashi 2-Chome, Chuo-ku, Tokyo, 103 Japan. **Orders for Taiwan:** Unimed Healthcare, Inc., 3F, No. 74, Song-te Road, Taiwan, R.O.C.

**PCR METHODS AND APPLICATIONS**

**closely describe(s) your position:**

- ☐ (1) Professor
- ☐ (2) Graduate student
- ☐ (3) Postdoctoral scientist
- ☐ (4) Lab director
- ☐ (5) Lab technician
- ☐ (6) Medical student
- ☐ (7) Undergraduate student
- ☐ (8) Librarian
- ☐ (9) Publisher

**Please check your employment category:**

- ☐ (1) University/college
- ☐ (2) Research institute/foundation
- ☐ (3) Hospital
- ☐ (4) Medical school
- ☐ (5) Industry
- ☐ (6) Government
- ☐ (7) Library/information center

**Please check your primary field of interest:**

- ☐ (1) Biochemistry
- ☐ (2) Cell biology
- ☐ (3) Developmental biology
- ☐ (4) Epidemiology
- ☐ (5) Genetics
- ☐ (6) Immunology
- ☐ (7) Microbiology
- ☐ (8) Molecular biology
- ☐ (9) Neurobiology
- ☐ (10) Plant biology
- ☐ (11) Pharmacology
- ☐ (12) Virology
- ☐ (13) Oncology
- ☐ (14) Other \_\_\_\_\_

**Please check title(s) that most closely describe(s) your position:**

- ☐ (1) Professor
- ☐ (2) Graduate student
- ☐ (3) Postdoctoral scientist
- ☐ (4) Lab director
- ☐ (5) Lab technician
- ☐ (6) Medical student
- ☐ (7) Undergraduate student
- ☐ (8) Librarian
- ☐ (9) Publisher

**Please check your employment category:**

- ☐ (1) University/college
- ☐ (2) Research institute/foundation
- ☐ (3) Hospital
- ☐ (4) Medical school
- ☐ (5) Industry
- ☐ (6) Government
- ☐ (7) Library/information center

**Please check your primary field of interest:**

- ☐ (1) Biochemistry
- ☐ (2) Cell biology
- ☐ (3) Developmental biology
- ☐ (4) Epidemiology
- ☐ (5) Genetics
- ☐ (6) Immunology
- ☐ (7) Microbiology
- ☐ (8) Molecular biology
- ☐ (9) Neurobiology
- ☐ (10) Plant biology
- ☐ (11) Pharmacology
- ☐ (12) Virology
- ☐ (13) Oncology
- ☐ (14) Other \_\_\_\_\_

**Please check title(s) that most closely describe(s) your position:**

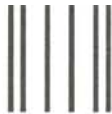
- ☐ (1) Professor
- ☐ (2) Graduate student
- ☐ (3) Postdoctoral scientist
- ☐ (4) Lab director
- ☐ (5) Lab technician
- ☐ (6) Medical student
- ☐ (7) Undergraduate student
- ☐ (8) Librarian
- ☐ (9) Publisher

**Please check your employment category:**

- ☐ (1) University/college
- ☐ (2) Research institute/foundation
- ☐ (3) Hospital
- ☐ (4) Medical school
- ☐ (5) Industry
- ☐ (6) Government
- ☐ (7) Library/information center

**Please check your primary field of interest:**

- ☐ (1) Biochemistry
- ☐ (2) Cell biology
- ☐ (3) Developmental biology
- ☐ (4) Epidemiology
- ☐ (5) Genetics
- ☐ (6) Immunology
- ☐ (7) Microbiology
- ☐ (8) Molecular biology
- ☐ (9) Neurobiology
- ☐ (10) Plant biology
- ☐ (11) Pharmacology
- ☐ (12) Virology
- ☐ (13) Oncology
- ☐ (14) Other \_\_\_\_\_



NO POSTAGE  
NECESSARY  
IF MAILED  
IN THE  
UNITED STATES

## BUSINESS REPLY MAIL

FIRST CLASS MAIL PERMIT NO. 150 HICKSVILLE, NY

POSTAGE WILL BE PAID BY ADDRESSEE

COLD SPRING HARBOR LABORATORY PRESS  
10 SKYLINE DRIVE  
PLAINVIEW, NY 11803-2500



NO POSTAGE  
NECESSARY  
IF MAILED  
IN THE  
UNITED STATES

## BUSINESS REPLY MAIL

FIRST CLASS MAIL PERMIT NO. 150 HICKSVILLE, NY

POSTAGE WILL BE PAID BY ADDRESSEE

COLD SPRING HARBOR LABORATORY PRESS  
10 SKYLINE DRIVE  
PLAINVIEW, NY 11803-2500



NO POSTAGE  
NECESSARY  
IF MAILED  
IN THE  
UNITED STATES

## BUSINESS REPLY MAIL

FIRST CLASS MAIL PERMIT NO. 150 HICKSVILLE, NY

POSTAGE WILL BE PAID BY ADDRESSEE

COLD SPRING HARBOR LABORATORY PRESS  
10 SKYLINE DRIVE  
PLAINVIEW, NY 11803-2500



# RESEARCH METHODS REVIEWS COMMENT



**For fastest service, call:**

**1-800-843-4388**

Continental U.S.  
and Canada

**516-349-1930**

All other locations

**FAX: 516-349-1946**



**COLD SPRING HARBOR  
LABORATORY PRESS**



**COLD SPRING HARBOR**



**LABORATORY PRESS**

## READER SERVICE CARD

Please print clearly:

NAME																			
POSITION										TEL.									
ORGANIZATION																			
ADDRESS																			
CITY										STATE					ZIP CODE				
POSTAL CODE										COUNTRY									

Are you a subscriber?

YES ☐ NO ☐

Is this a pass-along copy?

YES ☐ NO ☐

For further information  
WRITE assigned key  
numbers in boxes below


Offer valid for 6 mos. from issue date.

For further information about advertisements and new products, write the number(s) corresponding to the number at the base of the item(s) of interest. Enter the issue date, your name and address, and return this card.

Issue date:     Month   1994

### PCR METHODS AND APPLICATIONS

Please check title(s) that most closely describe(s) your position:

- ☐ (1) Professor
- ☐ (2) Graduate student
- ☐ (3) Postdoctoral scientist
- ☐ (4) Lab director
- ☐ (5) Lab technician
- ☐ (6) Medical student
- ☐ (7) Undergraduate student
- ☐ (8) Librarian
- ☐ (9) Publisher

Please check your employment category:

- ☐ (1) University/college
- ☐ (2) Research institute/foundation
- ☐ (3) Hospital
- ☐ (4) Medical school
- ☐ (5) Industry
- ☐ (6) Government
- ☐ (7) Library/information center

Please check your primary field of interest:

- ☐ (1) Biochemistry
- ☐ (2) Cell biology
- ☐ (3) Developmental biology
- ☐ (4) Epidemiology
- ☐ (5) Genetics
- ☐ (6) Immunology
- ☐ (7) Microbiology
- ☐ (8) Molecular biology
- ☐ (9) Neurobiology
- ☐ (10) Plant biology
- ☐ (11) Pharmacology
- ☐ (12) Virology
- ☐ (13) Oncology
- ☐ (14) Other

## READER SERVICE CARD

Please print clearly:

NAME																			
POSITION										TEL.									
ORGANIZATION																			
ADDRESS																			
CITY										STATE					ZIP CODE				
POSTAL CODE										COUNTRY									

Are you a subscriber?

YES ☐ NO ☐

Is this a pass-along copy?

YES ☐ NO ☐

For further information  
WRITE assigned key  
numbers in boxes below


Offer valid for 6 mos. from issue date.

For further information about advertisements and new products, write the number(s) corresponding to the number at the base of the item(s) of interest. Enter the issue date, your name and address, and return this card.

Issue date:     Month   1994

### PCR METHODS AND APPLICATIONS

Please check title(s) that most closely describe(s) your position:

- ☐ (1) Professor
- ☐ (2) Graduate student
- ☐ (3) Postdoctoral scientist
- ☐ (4) Lab director
- ☐ (5) Lab technician
- ☐ (6) Medical student
- ☐ (7) Undergraduate student
- ☐ (8) Librarian
- ☐ (9) Publisher

Please check your employment category:

- ☐ (1) University/college
- ☐ (2) Research institute/foundation
- ☐ (3) Hospital
- ☐ (4) Medical school
- ☐ (5) Industry
- ☐ (6) Government
- ☐ (7) Library/information center

Please check your primary field of interest:

- ☐ (1) Biochemistry
- ☐ (2) Cell biology
- ☐ (3) Developmental biology
- ☐ (4) Epidemiology
- ☐ (5) Genetics
- ☐ (6) Immunology
- ☐ (7) Microbiology
- ☐ (8) Molecular biology
- ☐ (9) Neurobiology
- ☐ (10) Plant biology
- ☐ (11) Pharmacology
- ☐ (12) Virology
- ☐ (13) Oncology
- ☐ (14) Other

## READER SERVICE CARD

Please print clearly:

NAME																			
POSITION										TEL.									
ORGANIZATION																			
ADDRESS																			
CITY										STATE					ZIP CODE				
POSTAL CODE										COUNTRY									

Are you a subscriber?

YES ☐ NO ☐

Is this a pass-along copy?

YES ☐ NO ☐

For further information  
WRITE assigned key  
numbers in boxes below


Offer valid for 6 mos. from issue date.

For further information about advertisements and new products, write the number(s) corresponding to the number at the base of the item(s) of interest. Enter the issue date, your name and address, and return this card.

Issue date:     Month   1994

### PCR METHODS AND APPLICATIONS

Please check title(s) that most closely describe(s) your position:

- ☐ (1) Professor
- ☐ (2) Graduate student
- ☐ (3) Postdoctoral scientist
- ☐ (4) Lab director
- ☐ (5) Lab technician
- ☐ (6) Medical student
- ☐ (7) Undergraduate student
- ☐ (8) Librarian
- ☐ (9) Publisher

Please check your employment category:

- ☐ (1) University/college
- ☐ (2) Research institute/foundation
- ☐ (3) Hospital
- ☐ (4) Medical school
- ☐ (5) Industry
- ☐ (6) Government
- ☐ (7) Library/information center

Please check your primary field of interest:

- ☐ (1) Biochemistry
- ☐ (2) Cell biology
- ☐ (3) Developmental biology
- ☐ (4) Epidemiology
- ☐ (5) Genetics
- ☐ (6) Immunology
- ☐ (7) Microbiology
- ☐ (8) Molecular biology
- ☐ (9) Neurobiology
- ☐ (10) Plant biology
- ☐ (11) Pharmacology
- ☐ (12) Virology
- ☐ (13) Oncology
- ☐ (14) Other



NO POSTAGE  
NECESSARY  
IF MAILED  
IN THE  
UNITED STATES

## BUSINESS REPLY MAIL

FIRST CLASS PERMIT #5 COLD SPRING HARBOR, N.Y.

POSTAGE WILL BE PAID BY ADDRESSEE

Advertising Manager  
Library Building  
COLD SPRING HARBOR LABORATORY PRESS  
PO Box 100  
Cold Spring Harbor, NY 11724-2300



NO POSTAGE  
NECESSARY  
IF MAILED  
IN THE  
UNITED STATES

## BUSINESS REPLY MAIL

FIRST CLASS PERMIT #5 COLD SPRING HARBOR, N.Y.

POSTAGE WILL BE PAID BY ADDRESSEE

Advertising Manager  
Library Building  
COLD SPRING HARBOR LABORATORY PRESS  
PO Box 100  
Cold Spring Harbor, NY 11724-2300



NO POSTAGE  
NECESSARY  
IF MAILED  
IN THE  
UNITED STATES

## BUSINESS REPLY MAIL

FIRST CLASS PERMIT #5 COLD SPRING HARBOR, N.Y.

POSTAGE WILL BE PAID BY ADDRESSEE

Advertising Manager  
Library Building  
COLD SPRING HARBOR LABORATORY PRESS  
PO Box 100  
Cold Spring Harbor, NY 11724-2300



**COLD SPRING HARBOR**



**LABORATORY PRESS**





## WARNING: Insufficient Medical Research Can Be Hazardous To Your Health

Too many Americans are suffering and dying needlessly because, as a nation, we don't invest enough in medical research.

That's why former Surgeon General C. Everett Koop is joining Research!America, an alliance for discoveries in health, in making a simple request:

Let Congress (202-224-3121) and The White House (202-456-1111) know if you agree that health research should be a number-one national priority.

Call 1-800-FON-CURE for a free pamphlet to learn more about how you can help.

**Research!America**  
AN ALLIANCE FOR DISCOVERIES IN HEALTH