



CELLECTA

Lentiviral constructs and libraries. Simplified.

Stably express CRISPR sgRNA, shRNA, cDNA or reporter genes in your mammalian cell. Get pooled libraries for your every need.

sgRNA. shRNA. cDNA. Clonal barcodes.

- Variety of vector options
- Different antibiotic and flurophore markers
- Plasmid or lentiviral particles at a range of titers

Simply provide the gene information. We will select optimal guide designs, make your constructs or libraries and ship them to you.

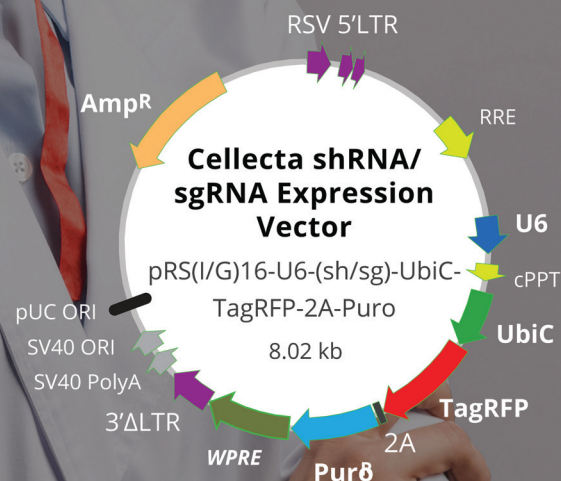
Real expertise delivering reliable results. Visit cellecta.com

Who we are

Cellecta is a leading provider of genomic products and services. Our functional genomic portfolio includes loss-of-function and gain-of-function screening, custom and genome-wide CRISPR, RNAi and barcode libraries, construct services, cell engineering, NGS kits and transcriptome profiling products and services.

We help power your workflows.

www.cellecta.com info@cellecta.com +1 877-938-3910 or +1 650-938-3910



© 2026 Cellecta, Inc. 320 Logue Ave. Mountain View, CA 94043 USA



Where Biology & Medicine CONNECT

*FROM MECHANISM TO MEDICINE:
AT KEYSTONE SYMPOSIA,
SCIENTISTS ACROSS DISCIPLINES
GATHER TO SHARE EARLY INSIGHTS,
CHALLENGE ASSUMPTIONS, AND
ACCELERATE PROGRESS.*

For over 50 years, Keystone Symposia has convened scientists to advance the most pressing questions in biology and medicine.

Our intentionally designed, discussion-driven meetings bring disciplines together, connect foundational science with emerging technologies, and create space for open exchange.

Because discovery happens at the intersections — where insights become impact and science moves forward, together.



DISCOVER MEETINGS
SHAPING THE FUTURE
OF BIOLOGY.

KEYSYM.US/
CONFERENCES



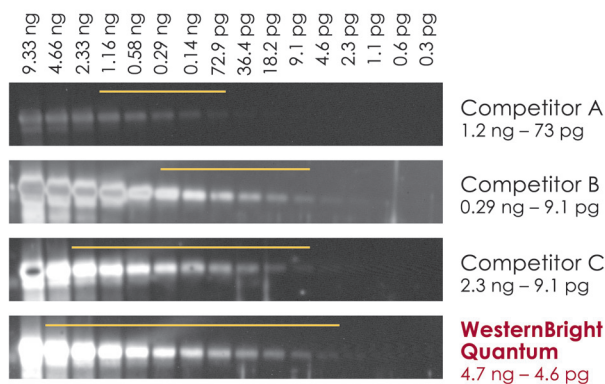
WesternBright® Quantum®

WesternBright Quantum produces a strong, long-lasting signal with extremely low background, perfect for detecting low abundance proteins. Since it does not exhibit substrate depletion at high protein loads, WesternBright Quantum provides a large dynamic range for the most quantitative chemiluminescent Western experiments.

Advantages

- **Sensitive** – detect attomoles of protein per band
- **Quantitative** – linear range of signal with respect to protein amount exceeds 3 orders of magnitude
- **Low background** – for high signal-to-noise ratios
- **Long-lasting signal** – image blots hours after substrate incubation
- **Versatile** – optimized for CCD and film imaging

Highest sensitivity, greatest linear range



Identical Western blots containing serial dilutions of transferrin were probed with a rabbit-anti-transferrin primary antibody, and a goat-anti-rabbit secondary antibody conjugated to horseradish peroxidase. The blots were incubated with chemiluminescent substrates as recommended by each manufacturer. All blots were simultaneously imaged for 2 minutes on a CCD imager; and display parameters are identical across all images shown. The limit of detection was defined as the lowest protein amount for which band intensity was greater than or equal to 2.5-times the signal-to-noise ratio.



Obtain a free sample

www.advansta.com/WesternBright_Quantum

Complex Oligo Modifications

Specializing in the design and synthesis of challenging combinations of modifications

30+ years of skilled and accomplished capabilities

All Modifications and Oligo Types Synthesized

- Long modified DNA oligos up to 250 mer and RNA oligos to 130 mer
- Ultra-Modified siRNA and Anti Sense Oligos to specifically increase duplex stability, nuclease resistance and cell permeation
- Modified Fluorescent Molecular Probes
- Solid support bound affinity oligos
- Cell penetrating peptide conjugated oligos
- Rapid turnaround time

email: support@genelink.com | www.genelink.com



1 Westchester Plaza
Elmsford, New York 10523
tel: 914-769-1192
toll free: 1-800 GENE LINK



Built for unstoppable science.

USA
SCIENTIFIC



Level up and lock in.

In my lab, accuracy is everything. The stakes are high, and high stakes require high standards. That's why I depend on TipOne®. Molded with tolerances tighter than those used in aerospace, produced through a high-precision injection process, and subject to rigorous quality control, TipOne® tips provide trusted precision. I have zero room for error. I'm built for unstoppable science. Superior performance starts with your tools.

Learn more about TipOne® pipette tips at www.usascientific.com/unstoppable



biomodal

Identify **novel biomarkers** for early detection of cancer from cfDNA with the **6-base genome**

biomodal.com

