

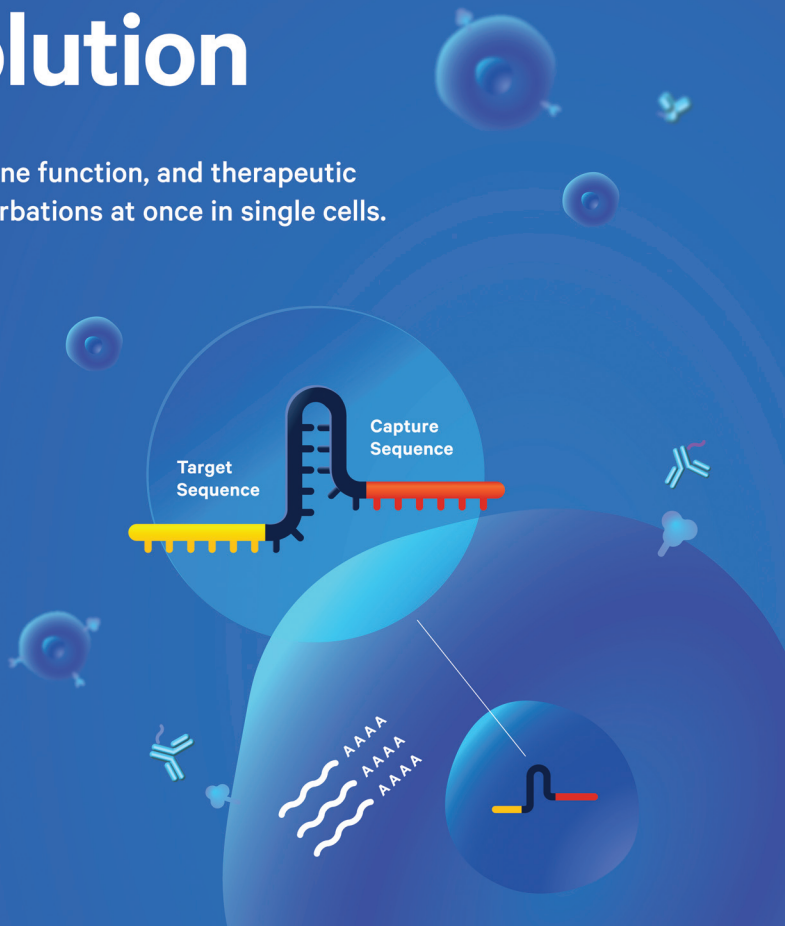
Chromium Single Cell CRISPR Screening

Functional genomics at single cell resolution

Study the complexity of development, disease, gene function, and therapeutic response by analyzing tens to thousands of perturbations at once in single cells.

With Chromium Single Cell CRISPR Screening from 10x Genomics, researchers can:

- Directly link CRISPR perturbations to multiomic single cell phenotypes, including gene and cell surface protein expression
- Scale functional genomics screens with a streamlined, high-throughput single cell CRISPR screening workflow
- Generate detailed, high-content data, offering deeper insights in about half the time required for a pooled screen



Discover what you can do at
10xgen.com/crispr-cshl

10x
GENOMICS

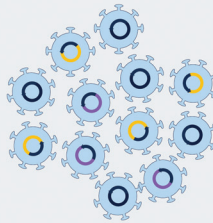
Bringing scale and single cell resolution to functional CRISPR screens

With Chromium Single Cell CRISPR Screening from 10x Genomics, researchers can profile thousands of different CRISPR perturbations and detect single-guide RNAs (sgRNAs) with directly linked gene expression phenotypes at single cell resolution. This comprehensive approach empowers researchers to explore the complete transcriptomic effects of genetic perturbations with greater throughput, experimental efficiency, and resolution than bulk CRISPR screening or individual knockouts.

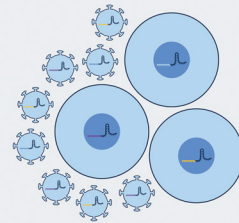
Design your CRISPR library



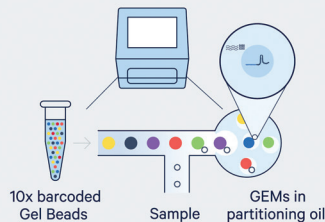
Assemble lentivirus



Infect and select your cells



Construct your 10x Genomics libraries



Sequence libraries



Discover new insights



Learn more

Scan the QR code for the Chromium Single Cell CRISPR Screening product sheet



Chromium Gene Expression Flex

Flex your single cell muscle

More samples, more insights,
more savings

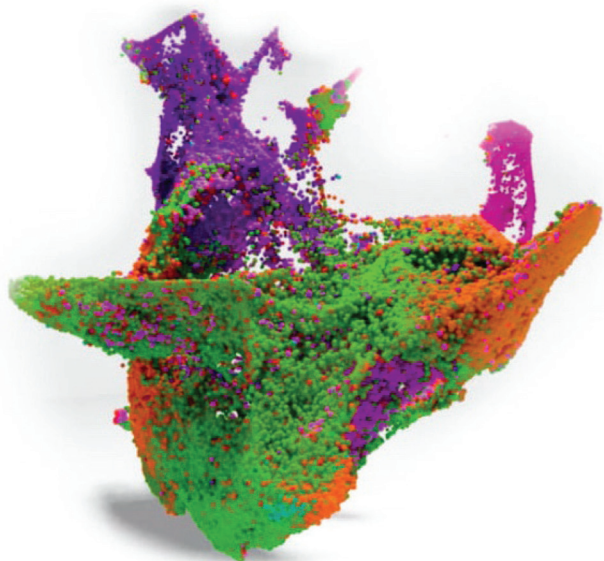
Change what's possible for your single cell studies. Flex allows you to uncover critical cellular insights from fresh, frozen, and fixed samples—even FFPE. Put research on your terms, with advanced chemistry that reduces your spend while providing the ultimate workflow flexibility, letting you fix, batch, and run samples on your own schedule.



Learn how:
10xgen.com/flex-cshl

10x
GENOMICS

Discover Single Cell Biology at SCALE.



At ScaleBio, our single-cell profiling and analysis solutions based on combinatorial indexing enable increased throughput for larger, more complex studies.



Learn more at www.scale.bio

Doing science
doesn't
have to be
wasteful.

TipOne®

From our eco-friendly product design to our innovative manufacturing practices, we're committed to reducing our environmental impact. As your partners in how you do your work, together we can drive sustainability.

TipOne pipette tips are at the forefront of our sustainability efforts:

- TipOne cassettes and racks* are now made with partially recycled materials
- Their innovative refill design for standard and filter tips saves money, counter space, and packaging plastic
- Production facility is powered by 100% wind energy
- Tips are ACT® Label certified
- Racks, cassettes, and wafers are recyclable

By seamlessly integrating these eco-friendly features, we continue to develop a greener product without compromising the exceptional quality of our 100% virgin polypropylene pipette tips.



To discover more about TipOne and our sustainability efforts, visit usascientific.com/TipOne-impact

*Racks coming soon!



USC
SCIENTIFIC
SIDE BY SCIENCE



DNA METHYLATION CONTROLS

Keep Your DNA Methylation Experiments in Control

AVAILABLE CONTROLS

- High or Low Methylated DNA
- Methylation Calibration Standards
- Human, Mouse, Rat, Monkey, and Custom-Made Controls



DNA METHYLATION ANALYSIS

Targeted Bisulfite NGS (tNGBS)

- Single base-pair resolution
- Provide β -value methylation results
- High coverage with average >500x and a minimum 100x

Pyrosequencing Methylation Analysis

- Quantitative, accurate, and cost-effective



DNA METHYLATION ASSAY KITS

Line-1 Global Methylation Assay

- Represents ~17% of the human genome
- Serves as global methylation markers
- Compatible: MS-HRM, tNGBS, and Pyrosequencing

Foxp3 Methylation Assay Panels

- Quantify methylation levels in Treg signature genes, including Foxp3, CTLA4, IL2RA (CD25)
- Compatible: MS-HRM, tNGBS, and Pyrosequencing

GET IN TOUCH

800.941.6884 508.497.9400

info@epigenDX.com

labs.epigenDX.com

96 South Street
Hopkinton, MA 01748

15+ YEARS

Focused on disease biomarker discovery, validation and molecular diagnosis, trust in EpigenDx for your next research project.



#22D2079826

SOLUTIONS FOR EPIGENETICS RESEARCH



EPIGENDX

We have had the privilege of supporting
renowned researchers from almost 60
countries, delivering exceptional service.

Thousands of papers have been published
in the world's top academic journals

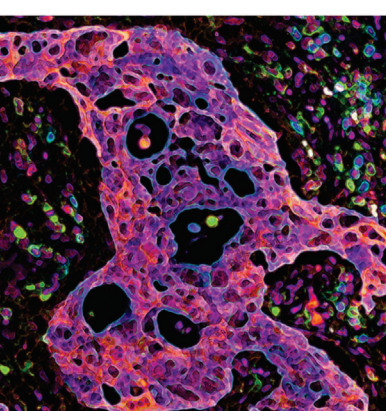
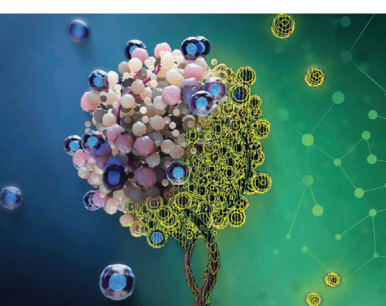
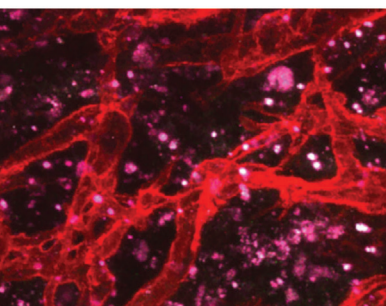
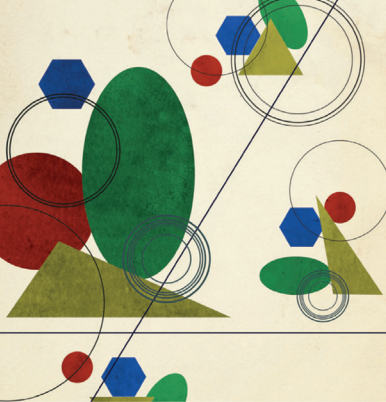
sbs 赛百盛

SBS Genetech Co., Ltd.

Explore Today

At the forefront of providing Life Science
solutions since 2000

www.sbsgenetech.com



AACR American Association
for Cancer Research®

2023 SCIENTIFIC CONFERENCES

Presenting the most significant research on cancer etiology, prevention,
diagnosis, and treatment

Advances in Kidney Cancer Research

June 24-27, 2023 | Austin, TX

Conference Cochairs: Othon Iliopoulos, M.
Celeste Simon, Cheryl Lyn Walker, and
Qing Zhang

Second JCA-AACR Precision Cancer Medicine International Conference

June 28-30, 2023 | Kyoto, Japan

Conference Cochairs: Hiroyoshi Nishikawa
and Charles Swanton

AACR-AHNS Head and Neck Cancer Conference: Innovating through Basic, Clinical, and Translational Research

July 7-8, 2023 | Montréal, QC, Canada

Conference Cochairs: Joseph A. Califano,
Maura L. Gillison, Sana D. Karam, and
Jose P. Zavallos

Molecular Biology in Clinical Oncology Workshop

July 16-22, 2023 | San Diego, CA

Workshop Director: Ross L. Levine
Workshop Codirectors: Christine M. Lovly and
Jean Y. Tang

ASCO/AACR Methods in Clinical Cancer Research Workshop

July 23-29, 2023 | La Jolla, California

Workshop Codirectors: Manuel Hidalgo, Julie M.
Vose and Thomas M. Braun

CRI-ENCI-AACR Seventh International Cancer Immunotherapy Conference: Translating Science Into Survival

September 20-23, 2023 | Milano, Italy

Conference Cochairs: Pier Francesco Ferrucci,
Christoph Huber, Padmanee Sharma, and
Arlene H. Sharpe

Pancreatic Cancer

September 27-30, 2023 | Boston, MA

Conference Cochairs: Christine A. Iacobuzio-
Donahue, Anirban Maitra, Rosalie C. Sears
and Jen Jen Yeh

The Science of Cancer Health Disparities in Racial/Ethnic Minorities and the Medically Underserved

September 29-October 2, 2023 | Orlando, FL

Conference Cochairs: Ronny A. Bell, Gloria D.
Coronado, Sophia H. L. George, Augusto C.
Ochoa, Renee Reams, and Tiffany A. Wallace

Tumor Immunology and Immunotherapy

October 1-4, 2023 | Toronto, ON, Canada

Conference Cochairs: Philip D. Greenberg,
Pamela S. Ohashi, Andrea Schietinger, and
Mario Sznol

Ovarian Cancer

October 5 - 7, 2023 | Boston, MA

Conference Cochairs: Frances R. Balkwill,
Benjamin G. Neel, Kunle Odunsi and Elizabeth
M. Swisher

AACR-NCI-EORTC International Conference on Molecular Targets and Cancer Therapeutics

October 11-15, 2023 | Boston, MA

Conference Cochairs: Timothy A. Yap, Tim F.
Greten and E.G. Elisabeth de Vries

AACR-KCA Joint Conference on Precision Medicine in Cancer

November 15-17, 2023 | Seoul, South Korea

Conference Cochairs: Tae Min Kim and
Elaine R. Mardis

Learn more and register at
AACR.org/Calendar

Follow us @AACR



SYNTHEGO

Target Discovery Starts with Certainty

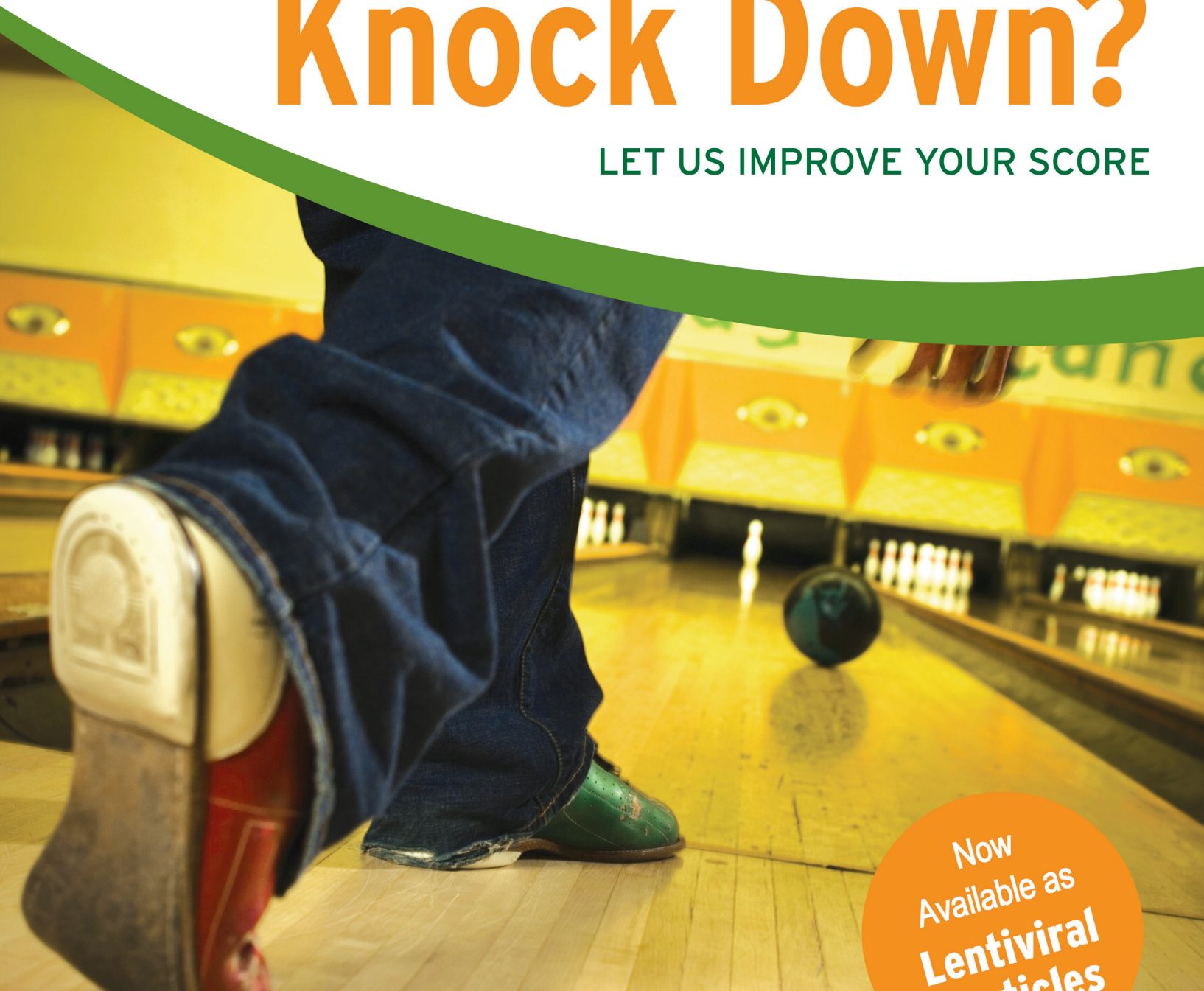
Validate Drug Targets with Speed and Confidence
with Synthego's Engineered Cell Libraries

synthego.com/cshl-cell-libraries



Looking for that Perfect Knock Down?

LET US IMPROVE YOUR SCORE

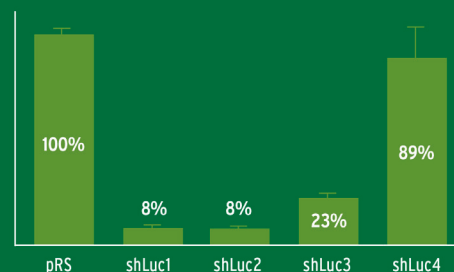


Now
Available as
**Lentiviral
Particles**

HuSH-29™ shRNA Expression Plasmids

- Up to 100 times more efficient than 21mer
- Reduced off-target effects
- Purified plasmid at no extra cost
- Four sequence verified constructs per gene
- Performance guaranteed

HuSH-29 Validation



A reporter construct expressing luciferase was co-transfected into HEK293 cells with 4 HuSH-29 luciferase constructs or empty pRS vector control. Forty-eight hours post-transfection, the cells were examined for gene expression knockdown.

 **ORIGENE**
Your Gene Company

1-888-267-4436 • origene.com