

Stop and see us
at the ASBMB Meeting -
Booth 1048

AMRESCO®

Thermalase Tbr™

Thermostable DNA Polymerase



- Higher fidelity than Taq DNA polymerase
- Higher thermostability than Taq polymerase
- Long (6kb) primer extensions routinely achieved
- Economically priced

AMRESCO is proud to announce the addition of Thermalase Tbr™ Thermostable DNA Polymerase to its offering of enzymes and reagents for molecular biology. Isolated from a proprietary strain of *Thermus brokianus*, Thermalase Tbr offers some distinct advantages over Taq polymerase in primer extension reactions.

AUSTRALIA: +61-2-5402055 AUSTRIA: +43-1-889-18-19 CANADA: +416-470-2520
CHINA: +852-8983008 CZECH REPUBLIC: +42-5-740-938 FRANCE: +33-70-03-88-55
GERMANY: +05-51-50-686-0 GREECE: +30-1-7235523 HONG KONG: +852-8983008
HUNGARY: +42-5-740-938 INDIA: +91-1160-8710 IRELAND: +353-1-391212
ISRAEL: +972-2-520279 ITALY: +39-2-5097-221 JAPAN: +81-3-3663-3271
KOREA: +82-2-203-0707 MALAYSIA: +65-288-6388 MEXICO: +52-5-654-4245
NETHERLANDS: +31-75-31-05-53 PANAMA: +507-26-0948 POLAND: +42-5-740-938
SINGAPORE: +65-288-6388 S. AFRICA: +27-11-886-1900 SPAIN: +34-1-551-14-91
SWEDEN: +46-31-36-3000 SWITZERLAND: +41-21-728-77-72
TAIWAN: +886-2-381-0844 THAILAND: +66-2-2748331-3 U.K.: +44-622-678872
VENEZUELA: +58-2574-8434 YUGOSLAVIA: +41-21-728-30-66

AMRESCO Inc. • 30175 Solon Industrial Parkway
Solon, OH 44139 • (800) 829-2805 • FAX: (216) 349-1182

©1994 by AMRESCO Inc. All rights reserved. AMRESCO® is a registered trademark of AMRESCO Inc. 4/94

Your Next PCR Cloning System Should Have:

- **An Ultra-Stable Vector**
- **High Efficiency Ligation**
- **Only 90 min. from PCR Product to Plated Bacteria**

No Hidden Steps, No Excuses

No matter what your level of PCR experience, the **Prime PCR Cloner™** kit is the complete answer to your cloning needs. Our high efficiency shuttle vector (pNoTA, 2.7 kb size) is stable for **at least 1 year** and contains an exceptionally versatile multiple cloning site. Optimized blunt end ligation typically provides insert yields of >90% for 600 bp products and 80+% for 1900 bp products. A 15 kbp genomic fragment has been inserted into this vector using the kit! Spin column cleanup minimizes false positives by removing "Primer-Dimers" and small PCR products. All this in **only an hour and a half from start to finish**. For more information or to receive a protocol, call or fax us at

Tel: 800-533-5703 Fax: 303-440-0835

5 Prime → 3 Prime, Inc. 5603 Arapahoe Ave. Boulder CO 80303



Reader Service No. 392

Oh! Drat! No PCR Product in ANY of the White Colonies!

PCR SELECT® Columns



Actual Size

- Removes dNTPs, DNA polymerase, mineral oil, short primers, small fragments and "Primer-Dimers" from PCR reactions in 6 minutes!
 - 3 Different Cutoffs:
 - SELECT® I for >20 bp
 - SELECT® II for >100 bp
 - SELECT® III for >300 bp
 - >80% DNA recovery with >99% removal of dNTPs
 - Minimizes false positives
 - Works with any cloning kit
- For more information, call or fax us at

Tel: 800-533-5703

Fax: 303-440-0835

5 Prime → 3 Prime, Inc.
5603 Arapahoe Ave. Boulder CO 80303



Reader Service No. 393

Business Information

Editorial Office: Cold Spring Harbor Laboratory Press, 1 Bungtown Road, Cold Spring Harbor, New York 11724-2203. Phone: 516-367-8492; FAX 516-367-8532.

PCR Methods and Applications (ISSN 1054-9803) is published bimonthly for \$255 (U.S. institutional; \$270 R.O.W.), \$82.50 (individual making personal payment; \$97.50 R.O.W. surface, \$30 additional for airmail) by Cold Spring Harbor Laboratory Press, 1 Bungtown Road, Cold Spring Harbor, New York 11724. Second class postage pending is paid at Cold Spring Harbor and additional mailing offices. POSTMASTER: Send address changes to Cold Spring Harbor Laboratory, 10 Skyline Drive, Plainview, New York 11803-9729.

Subscriptions: Barbara Terry, Subscription Manager. Personal: U.S. \$82.50; R.O.W. \$97.50 surface mail, \$30 additional airlift delivery. Institutional: U.S. \$255; R.O.W. \$270. Orders may be sent to Cold Spring Harbor Laboratory Press, Fulfillment Department, 10 Skyline Drive, Plainview, New York 11803-9729. Telephone: Continental U.S. and Canada 1-800-843-4388; all other locations 516-349-1930. FAX 516-349-1946. Personal subscriptions must be prepaid by personal check, credit card, or money order. Claims for missing issues must be received within 4 months of issue date.

Advertising: Nancy Kuhle, Advertising Manager, Cold Spring Harbor Laboratory Press, 1 Bungtown Road, Cold Spring Harbor, New York, 11724-2203. Phone: 516-367-8351; FAX 516-367-8532.

Copyright information: Authorization to photocopy items for internal or personal use, or the internal or personal use of specific clients, is granted

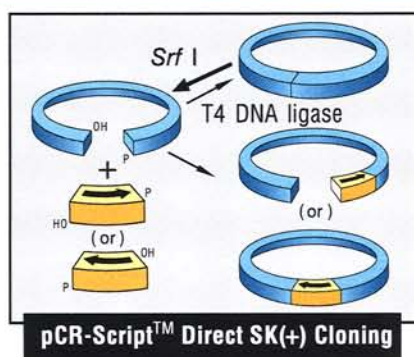
by Cold Spring Harbor Laboratory Press for libraries and other users registered with the Copyright Clearance Center (CCC) Transactional Reporting Service, provided that the base fee of \$5.00 per copy is paid directly to CCC, 21 Congress Street, Salem, Massachusetts 01970 (1054-9803/94 + \$5.00). This consent does not extend to other kinds of copying, such as copying for general distribution for advertising or promotional purposes, for creating new collective works, or for resale.

The methods, products, instructions of ideas contained in or suggested by this journal should be used only by experienced scientific researchers and only in accordance with prudent laboratory safety precautions. Their use by inexperienced or improperly trained individuals could result in serious injury. The publisher does not endorse the claims made by the advertisers in this journal.

Copyright © 1994 by Cold Spring Harbor Laboratory Press

ONE WAY CLONING!

- Rapid One-Tube Reaction
- Uses Bluescript® Vector Derivative/Sequencing Primers
- Directionality of Cloned PCR* Insert
- Use Unpurified PCR Product Inserts
- Use Existing Primer Sets



Stratagene has developed a one-hour PCR cloning system that allows the unidirectional cloning of blunt-ended PCR fragments. Blunt-ended molecules exist in sufficient quantities in *Taq*-generated PCR products. A PCR product is simply incubated with the pCR-Script™ Direct SK(+) vector DNA, rATP, T4 DNA ligase and the rare-cleavage *Srf* I restriction enzyme. An increase in recombinant efficiency is achieved by including the *Srf* I endonuclease in the ligation reaction. After a brief incubation, the mixture is added to competent cells without further treatment. Stratagene's new pCR-Script Direct SK(+) cloning kit allows for the highly efficient directional ligation of a PCR DNA fragment.¹

The pCR-Script Direct SK(+) phagemids are derivatives of the popular Bluescript® II SK(+) vector that encode ampicillin antibiotic resistance. The vector contains the *lac* promoter for gene expression, T3 and T7 RNA polymerase promoters, a ribosomal binding site, and an fMet start site. The pCR-Script Direct SK(+) vector also allows for blue/white color selection, single-stranded rescue and rapid DNA sequencing.

The pCR-Script Direct SK(+) cloning kit is provided complete with pretreated vector, enzymes and competent cells. Please call Stratagene for more information and the distributor nearest you.

Catalog # 211194



USA:
Corporate Headquarters
Easy Ordering: (800)424-5444
Telefax: (619)535-0034

Germany:
Stratagene GmbH
Telephone: (06221) 400634
Telefax: (06221) 400639

United Kingdom:
Stratagene Ltd.
Telephone: (0223) 420955
Telefax: (0223) 420234

Switzerland:
Stratagene GmbH
Telephone: (01) 3641106
Telefax: (01) 3657707

¹ Weiner, M. P. (1993) *Biotechniques* 15(3) 502-505

* The Polymerase Chain Reaction (PCR) process is covered by patents owned by Hoffmann-La Roche. Use of the PCR process requires a license.



If you wish
You Had an Extra Pair of Hands
for your...

PCR DNA Sequencing
PCR DNA Cloning
Plasmid DNA Sequencing
DNA Subcloning
Library screening
Plasmid Preparations

Call *ACGT, Inc.*

(Tel) 708-559-8631

(Fax) 708-559-8632

We Provide Complete Services
at Very Competitive Prices with an
Unconditional Guarantee

Reader Service No. 394

At Last!

EuGene™

At Last! A quick, easy and accurate way of choosing ideal oligos for DNA amplification, sequencing and hybridization. EuGene uses the latest thermodynamic data, and presents the results to you in the language of a molecular biologist. EuGene offers numerous options and is easy to customize for your specific needs.

- Intuitive graphical user interface that runs on any PC or compatible.
- State-of-the-art selection algorithms.
- GenBank, EMBL, Text files.
- Extensively field-tested in a variety of world-class labs.
- Professionally-written manual.
- FREE Technical Support Service.
- Academic/non-profit/government/multiple copy discounts.

For more information and a
free demonstration diskette call:
1-800-829-0101

The
New
Standard
In
Primer
Design
Software.

ΔΣΙ
DANIBEN
SYSTEMS INC.

Innovative
Software
for Science
& Medicine

Reader Service No. 395

BR

BIOMASTER RESEARCH

CENTER OF MOLECULAR BIOLOGY

**WE ARE ONE OF THE FEW TRUE MANUFACTURERS
OF ENZYMES. SOME OF THE BEST MULTINATIONAL
COMPANIES ARE OUR CLIENTS.**

*Many scientists know us through our products.
Now you know the original manufacturer name.
BIOMASTER RESEARCH now offers its' own
Products to the world of research.*

Taq DNA Polymerase

Description: Taq DNA Polymerase is a single subunit enzyme isolated from *Thermus aquaticus*. It has an optimum temperature of 76°C and can withstand temperatures of up to 95°.

\$110 per cat number: 26-10-44 - Taq DNA Polymerase 500 U



Tth DNA Polymerase Recombinant

Description: Tth Recombinant Polymerase is a thermostable 92-94 KD protein purified from *Thermo Thermophilus* the enzyme as both 5'-3' DNA dependent DNA polymerase and 5'-3' RNA dependent DNA polymerase (REVERSE TRANSCRIPTASE) activities.

\$110 per cat number: Tth DNA Polymerase 500 U



DNA Polymerase I Klenow Fragment

Description: Klenow fragment is a proteolytic fragment of DNA polymerase I and retains polymerization and 3'-5' exonuclease activity. The enzyme is purified from *E. Coli* carrying a plasmid in which the 3'-end two-thirds of the *E. Coli* DNA polymerase I gene (Klenow fragment) is cloned.

\$110 per cat number: PKF 500 U



T7 RNA Polymerase

Description: T7 RNA polymerase is a DNA dependent RNA polymerase that is highly specific for T7 promoter sequences. T7 RNA polymerase synthesizes RNA 5' to 3' RNA produced by the enzyme is biologically active mRNA and can be accurately spliced. T7 RNA polymerase is purified from *E. Coli* cells in which the enzyme is cloned.

\$110 per cat number: TNA7 500 U + reaction buffer

**The Products Listed Above
Are Sold At \$0.22 Per Unit. High
Quality With Definite Savings.**

More information can be requested from:

BR Biomaster Research

Via Verga - 46030 Romanore - Mantova - Italy

Italy: Phone 011-39-376-649-107 • Fax 011-39-376-649-105

Free Delivery Worldwide - Direct Shipment US and Canada

US Fax 1-305-346-8374

Europe or Italy Fax 011-39-376-649-105

PCR is covered by patents issued to Cetus Corporation and owned by Hoffman La-Roche, Inc. You may wish to contact Hoffman La-Roche for information on obtaining an appropriate license.

Reader Service No. 396

3

THREE FOLD
REDUCTION IN
AMIDITE USAGE —
MORE ECONOMICAL
OLIGOS

BREAKTHROUGH IN PROCESS SCALE SYNTHESIS

OligoPilot™

OligoPilot™ Large Scale Oligo Synthesizer is designed for synthesis from 10 μ mol to 400 μ mol (up to 800 μ mol capacity with high load support).

3

THREE FOLD
REDUCTION IN
SOLVENT USAGE —
REDUCED SOLVENT
DISPOSAL COST

OligoPilot™ utilizes an innovative pump driven flow-through column design and a new polymer support matrix, Primer Support. The flow-through design gives you the following benefits:

- Significant reductions in amidite usage, 1.5 molar equivalents
- Fast detritylation, 2 min. at 200 μ mol scale
- Short cycle times, 7 hours at 200 μ mol for a 20-mer
- Reduced waste volume, 415 ml at 200 μ mol scale
- Average yield per cycle of over 99%
- 12 amidite ports for DNA, RNA or modified amidites

The pump driven flow-through design ensures the active phosphoramidite concentrations remain high even at small molar excesses. This design also makes the most efficient use of other reagents and allows for rapid reagent change at up to 75 ml per minute.

Primer Support contributes to the overall performance due to its hydrophobic nature. Its hydrophobicity ensures that any water introduced with the oxidation step does not remain in the system, reducing coupling efficiency in later steps. The lack of labile sites also minimizes spontaneous chain elongation off the support which is sited for silica based supports.

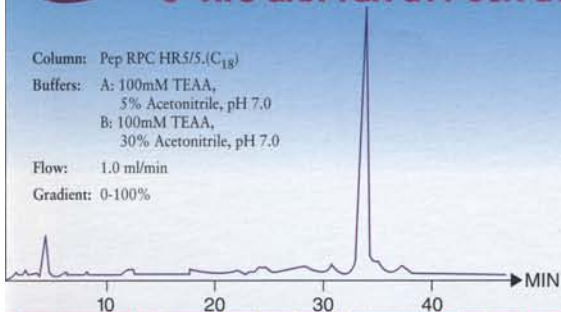
OligoPilot is fully programmable via an external computer. In addition, the computer tracks reagent usage and identifies the batch numbers for each reagent used for each oligo synthesis.

The on-line trityl monitor provides continuous display of coupling efficiency of each step. In the event of a poor coupling, the monitor can stop the synthesis before additional reagents are wasted.

Lab scale synthesis users can enjoy similar benefits of Primer Support and the pump driven flow-through design with the Gene Assembler® DNA/RNA Synthesizer.

5'-ATC GAA TGA GTT CCA GTT-3'

Column: Pep RPC HRS/5.(C₁₈)
Buffers: A: 100mM TEAA,
5% Acetonitrile, pH 7.0
B: 100mM TEAA,
30% Acetonitrile, pH 7.0
Flow: 1.0 ml/min
Gradient: 0-100%



Pharmacia Biotech Inc
800 Centennial Avenue
Piscataway, NJ 08854

Telephone:
U.S. 1-800-526-3593
Canada 1-800-463-5800

VISIT US AT PROTEIN SOCIETY—BOOTH
#307 and AACC—BOOTH #1119, 0-1545

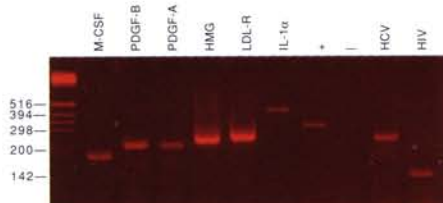
**Pharmacia
Biotech**

Reader Service No. 398

GeneAmp EZ *rTth* RNA PCR Kit

Remarkably simple process.

Simply remarkable results.



*GeneAmp EZ *rTth* RNA PCR Kit. Targets present at 400 pg total cellular RNA except IL-1 α (+) control (100 copies synthetic RNA), IL-1 α (-) control (0 copies), HCV and HIV RNA (100 copies from plasma).*

The GeneAmp[®] EZ *rTth* RNA PCR Kit makes RNA screening fast and sensitive with a process that is remarkably simple.

Now it's easy to detect femtograms of any RNA—mRNA, tRNA or RNA viruses—from the most complex samples in hours. Our optimized process enables *rTth* DNA Polymerase to act as both a reverse transcriptase and as a DNA polymerase.

Both activities take place in a one-tube, single-buffer system, with only one set of reagent additions. And the kit is fully compatible with dUTP and AmpErase[™] UNG to prevent PCR carry-over contamination.

The GeneAmp EZ *rTth* RNA PCR Kit for RNA screening complements our other RNA PCR kits for cDNA construction or gene expression. All are optimized on GeneAmp[®] PCR Instrument

Systems and backed by our PCR Performance Guarantee. The integrated resources of our Applied Biosystems Division now give you access to the most comprehensive range of systems, technologies and support in PCR, nucleic acid synthesis, genetic analysis and protein research.

The GeneAmp EZ *rTth* RNA PCR Kit. Remarkably sensitive RNA screening made remarkably simple. To order in the U.S., call 1-800-327-3002. For PCR technical support, call 1-800-762-4001. For more information, call 1-800-345-5224. Outside the U.S., contact your local Perkin-Elmer representative.

PERKIN ELMER

Europe Weiterstadt, Germany Tel: 49-6150-101-0 Fax: 49-6150-101-101
Canada Mississauga, Canada Tel: 800-668-6913 Fax: 905-821-8246
Japan Tokyo, Japan Tel: 81-4-7380-8500 Fax: 81-4-7380-8505
Latin America Mexico City, Mexico Tel: 52-5-651-7077 Fax: 52-5-593-6223
Australia Melbourne, Australia Tel: 61-3-212-8585 Fax: 61-3-212-8502

Perkin-Elmer PCR reagents are developed and manufactured by Roche Molecular Systems, Inc., Branchburg, New Jersey, U.S.A.



Perkin-Elmer is a registered trademark of The Perkin-Elmer Corporation. GeneAmp is a registered trademark and AmpErase is a trademark of Roche Molecular Systems, Inc. The GeneAmp PCR process is covered by the U.S. patents owned by Hoffmann-La Roche, Inc. and F. Hoffmann-La Roche Ltd.

Instructions for Authors

Submission of Papers

PCR Methods and Applications welcomes high-quality research papers that describe improvements in PCR methodology, new amplification methods, or the results of PCR application. The journal also publishes review and commentary articles, technical tips, and reader correspondence. All submissions to the journal will be peer-reviewed.

The journal accepts primary research papers and technical tips that present original research which has not previously been published. Submission to the journal implies that a paper is not currently being considered for another journal or book. It is also understood that investigators who submit research papers to the journal are prepared to make available to qualified academic researchers materials needed to duplicate their research results.

Review articles are commissioned. Authors wishing to submit review articles should first contact the Editor.

Contributors should submit their papers to:

Judy Cuddihy, Editor
PCR Methods and Applications
Cold Spring Harbor Laboratory
POB 100, 1 Bungtown Road
Cold Spring Harbor, New York 11724-2203
USA

Phone 516-367-8492

FAX 516-367-8532

One original and two copies of the manuscript should be submitted. Original photographs should be supplied with each copy.

Manuscript preparation

Papers accepted by the journal will occupy between 2 and 10 journal pages. A manuscript of 5 to 25 typed, double-spaced pages total (including methods, references, and figure legends) will translate to this length. Computer printouts should be of letter quality, and each page should be labeled with the first author's name and a page number. All figures should be labeled with the first author's name, the figure number, and an indication of the top. The size of figures will be adjusted to fit the journal format; therefore, please try to keep labels, symbols, and other call-out devices in proportion to the figure size and detail. Figures should be supplied as high-quality

glossy prints. Authors wishing to publish four-color art must pay part of the costs; price estimates will be provided on acceptance of a paper.

The following order of manuscript sections is preferred: Title page, abstract, introduction, methods, results, discussion, acknowledgments, references, tables, figure legends. The methods presented should be detailed enough to allow any qualified researcher to duplicate the results. References are cited by number in the text and the reference list should be numbered in the order the references are cited in the text. Bibliographic information should be supplied in the following order. For journal articles: Authors, year, article title, journal title, volume inclusive page numbers. For books: Authors, year, chapter title, book title, editors' names, volume, inclusive page numbers, publisher, city of publication.

Accepted manuscripts

Accepted manuscripts should be supplied on 3 1/2- or 5 1/4-inch discs to expedite typesetting. Please supply the manuscript as an ASCII file if possible. If a word-processing file is being sent, please do not use any underscoring, italic, or boldface; spell out special characters (Greek, math); use two carriage returns at the end of each paragraph, subheads, and list items. Indicate on the disc: computer brand name, type of file (text or word-processing), name of software, and disc format.

Proofs are considered the final form of the paper and correction can be made only in the case of factual errors. If additional information must be added at this stage, it should be in the form of "Note added in proof," subject to the approval of the editors.

Reprints may be ordered; a form will be included with the proofs.



From Cold Spring Harbor Laboratory Press



Most Cited Journal in Its Field; Now Semimonthly

Genes & Development reports major advances of general interest and biological significance in molecular biology, molecular genetics, and related areas. The journal appears semimonthly and includes research papers and review articles.

Volume 8, 1994, containing 24 semimonthly issues

Individual Price (U.S.) \$115.00

Individual Price (R.O.W. airlift delivery) \$205.00

Student Price (U.S.) \$85.00*

Student Price (R.O.W. airlift delivery) \$165.00*

Institutional Price (U.S.) \$450

Institutional Price (R.O.W. airlift delivery) \$540

*Those who qualify must provide student I.D.

ISSN 0890-9369



Now Bimonthly

PCR Methods and Applications is devoted exclusively to amplification methods and their use. Its aim is to provide investigators in every discipline with a central source of reliable, independent, and up-to-date information about the principles and practice of amplification methods as well as their application.

Volume 3, 1993/94, containing 6 bimonthly issues (beginning August 1993)

Individual Price (U.S.) \$82.50

Individual Price (R.O.W. surface delivery) \$97.50

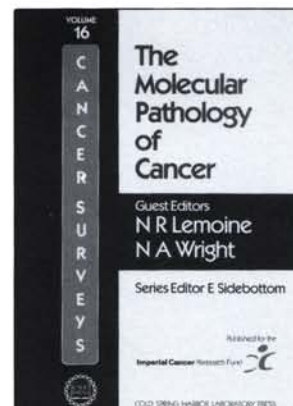
Individual Price (R.O.W. airlift delivery) \$127.50

Institutional Price (U.S.) \$255

Institutional Price (R.O.W. surface delivery) \$270

Institutional Price (R.O.W. airlift delivery) \$300

ISSN 1054-9803



A Co-publication

Cancer Surveys: Advances and Prospects in Clinical, Epidemiological and Laboratory Oncology is published for the Imperial Cancer Research Fund by Cold Spring Harbor Laboratory Press. It provides a comprehensive survey of the present state of, and future developments in, well-defined areas in oncology. Each issue deals with a specific topic and has guest editors with an expert knowledge of the subject.

Topics to be covered in 1994 are:

Volume 19/20: Trends in Cancer Incidence and Mortality (double issue)
Volume 21: Palliative Medicine

These issues can be ordered directly from Cold Spring Harbor Laboratory Press by subscription (\$216, plus \$25 airmail delivery) or individually (\$72, plus \$4.50 surface delivery or \$12 airmail delivery).

ISSN 1050-849X

Learning & Memory will publish experimental studies in humans and animals on cognition, behavior, development, neuropsychology, neurophysiology, biochemistry, cell biology and genetics. This new journal will contain peer-reviewed research papers, commissioned reviews and commentaries, theories and models, and short communications and letters.

Volume 1, 1994, containing 6 bimonthly issues

Individual Price (U.S.) \$85

Individual Price (R.O.W. surface delivery) \$100

Individual Price (R.O.W. airlift delivery) \$130

Institutional Price (U.S.) \$190

Institutional Price (R.O.W. surface delivery) \$205

Institutional Price (R.O.W. airlift delivery) \$235



Subscribe Today!

Cold Spring Harbor Laboratory Press, 10 Skyline Drive, Plainview, N.Y. 11803-2500

Phone: 1-800-843-4388 or 516-349-1930 • FAX: 516-349-1946



ORDER FORM



VOLUME 4, 1994/95, BIMONTHLY
(Six issues beginning August, 1994)

- ☐ Individual price (U.S.) - \$89
- ☐ Individual price (R.O.W. Surface Delivery) - \$105
- ☐ Individual price (R.O.W. Airlift Delivery) - \$137
- ☐ Student price (U.S.) - \$65*
- ☐ Student price (R.O.W. Surface Delivery) - \$85*
- ☐ Institutional price (U.S.) - \$276
- ☐ Institutional price (R.O.W. Surface Delivery) - \$292
- ☐ Institutional price (R.O.W. Airlift Delivery) - \$324
- ☐ Please send me a sample issue.

*Those who qualify must provide student I.D.

Personal orders must be prepaid by personal check, credit card or money order.
☐ Check or money order enclosed (U.S. Bank Checks Only)

Charge to: ☐ MASTERCARD ☐ VISA ☐ AMERICAN EXPRESS ☐ DISCOVER

ACCOUNT NO. _____ EXP. _____

SIGNATURE _____ TEL. _____

NAME _____

ADDRESS _____

CITY/STATE/ZIP _____

COUNTRY _____

TEL: Continental U.S. and Canada: 1-800-843-4388 ISSN 1054-9803

All other locations: 516-349-1930 FAX: 516-349-1946

All prices subject to change without notice.

Orders for Japan: Maruzen Company Ltd., 3 - 10, Nihonbashi 2-Chome, Chuo-ku, Tokyo, 103 Japan. **Orders for Taiwan:** Unimed Healthcare, Inc., 3F, No. 74, Song-te Road, Taiwan, R.O.C.



VOLUME 4, 1994/95, BIMONTHLY
(Six issues beginning August, 1994)

- ☐ Individual price (U.S.) - \$89
- ☐ Individual price (R.O.W. Surface Delivery) - \$105
- ☐ Individual price (R.O.W. Airlift Delivery) - \$137
- ☐ Student price (U.S.) - \$65*
- ☐ Student price (R.O.W. Surface Delivery) - \$85*
- ☐ Institutional price (U.S.) - \$276
- ☐ Institutional price (R.O.W. Surface Delivery) - \$292
- ☐ Institutional price (R.O.W. Airlift Delivery) - \$324
- ☐ Please send me a sample issue.

*Those who qualify must provide student I.D.

Personal orders must be prepaid by personal check, credit card or money order.
☐ Check or money order enclosed (U.S. Bank Checks Only)

Charge to: ☐ MASTERCARD ☐ VISA ☐ AMERICAN EXPRESS ☐ DISCOVER

ACCOUNT NO. _____ EXP. _____

SIGNATURE _____ TEL. _____

NAME _____

ADDRESS _____

CITY/STATE/ZIP _____

COUNTRY _____

TEL: Continental U.S. and Canada: 1-800-843-4388 ISSN 1054-9803

All other locations: 516-349-1930 FAX: 516-349-1946

All prices subject to change without notice.

Orders for Japan: Maruzen Company Ltd., 3 - 10, Nihonbashi 2-Chome, Chuo-ku, Tokyo, 103 Japan. **Orders for Taiwan:** Unimed Healthcare, Inc., 3F, No. 74, Song-te Road, Taiwan, R.O.C.



VOLUME 4, 1994/95, BIMONTHLY
(Six issues beginning August, 1994)

Please pass this order form to your librarian so that your colleagues can see PCR METHODS AND APPLICATIONS in your library.

- ☐ Institutional price (U.S.) - \$276
- ☐ Institutional price (R.O.W. Surface Delivery) - \$292
- ☐ Institutional price (R.O.W. Airlift Delivery) - \$324
- ☐ Please send me a sample issue.

PURCHASE ORDER NO. _____

NAME _____

ORGANIZATION _____

ADDRESS _____

CITY/STATE/ZIP _____

COUNTRY _____

TEL: Continental U.S. and Canada: 1-800-843-4388 ISSN 1054-9803

All other locations: 516-349-1930 FAX: 516-349-1946

All prices subject to change without notice.

Orders for Japan: Maruzen Company Ltd., 3 - 10, Nihonbashi 2-Chome, Chuo-ku, Tokyo, 103 Japan. **Orders for Taiwan:** Unimed Healthcare, Inc., 3F, No. 74, Song-te Road, Taiwan, R.O.C.

Please check title(s) that most closely describe(s) your position:

- ☐ (1) Professor
- ☐ (2) Graduate student
- ☐ (3) Postdoctoral scientist
- ☐ (4) Lab director
- ☐ (5) Lab technician
- ☐ (6) Medical student
- ☐ (7) Undergraduate student
- ☐ (8) Librarian
- ☐ (9) Publisher

Please check your employment category:

- ☐ (1) University/college
- ☐ (2) Research institute/foundation
- ☐ (3) Hospital
- ☐ (4) Medical school
- ☐ (5) Industry
- ☐ (6) Government
- ☐ (7) Library/information center

Please check your primary field of interest:

- ☐ (1) Biochemistry
- ☐ (2) Cell biology
- ☐ (3) Developmental biology
- ☐ (4) Epidemiology
- ☐ (5) Genetics
- ☐ (6) Immunology
- ☐ (7) Microbiology
- ☐ (8) Molecular biology
- ☐ (9) Neurobiology
- ☐ (10) Plant biology
- ☐ (11) Pharmacology
- ☐ (12) Virology
- ☐ (13) Oncology
- ☐ (14) Other _____

Please check title(s) that most closely describe(s) your position:

- ☐ (1) Professor
- ☐ (2) Graduate student
- ☐ (3) Postdoctoral scientist
- ☐ (4) Lab director
- ☐ (5) Lab technician
- ☐ (6) Medical student
- ☐ (7) Undergraduate student
- ☐ (8) Librarian
- ☐ (9) Publisher

Please check your employment category:

- ☐ (1) University/college
- ☐ (2) Research institute/foundation
- ☐ (3) Hospital
- ☐ (4) Medical school
- ☐ (5) Industry
- ☐ (6) Government
- ☐ (7) Library/information center

Please check your primary field of interest:

- ☐ (1) Biochemistry
- ☐ (2) Cell biology
- ☐ (3) Developmental biology
- ☐ (4) Epidemiology
- ☐ (5) Genetics
- ☐ (6) Immunology
- ☐ (7) Microbiology
- ☐ (8) Molecular biology
- ☐ (9) Neurobiology
- ☐ (10) Plant biology
- ☐ (11) Pharmacology
- ☐ (12) Virology
- ☐ (13) Oncology
- ☐ (14) Other _____

Please check title(s) that most closely describe(s) your position:

- ☐ (1) Professor
- ☐ (2) Graduate student
- ☐ (3) Postdoctoral scientist
- ☐ (4) Lab director
- ☐ (5) Lab technician
- ☐ (6) Medical student
- ☐ (7) Undergraduate student
- ☐ (8) Librarian
- ☐ (9) Publisher

Please check your employment category:

- ☐ (1) University/college
- ☐ (2) Research institute/foundation
- ☐ (3) Hospital
- ☐ (4) Medical school
- ☐ (5) Industry
- ☐ (6) Government
- ☐ (7) Library/information center

Please check your primary field of interest:

- ☐ (1) Biochemistry
- ☐ (2) Cell biology
- ☐ (3) Developmental biology
- ☐ (4) Epidemiology
- ☐ (5) Genetics
- ☐ (6) Immunology
- ☐ (7) Microbiology
- ☐ (8) Molecular biology
- ☐ (9) Neurobiology
- ☐ (10) Plant biology
- ☐ (11) Pharmacology
- ☐ (12) Virology
- ☐ (13) Oncology
- ☐ (14) Other _____

For Fastest Service—
Call:

1-800-843-4388

—Continental U.S.
and Canada

516-349-1930

—All other locations

FAX:

516-349-1946



COLD SPRING HARBOR
LABORATORY PRESS
Plainview, NY 11803-2500

PCR METHODS AND APPLICATIONS



NO POSTAGE
NECESSARY
IF MAILED
IN THE
UNITED STATES

BUSINESS REPLY MAIL

FIRST CLASS MAIL PERMIT NO. 150 HICKSVILLE, NY

POSTAGE WILL BE PAID BY ADDRESSEE

COLD SPRING HARBOR LABORATORY PRESS
10 SKYLINE DRIVE
PLAINVIEW, NY 11803-2500



NO POSTAGE
NECESSARY
IF MAILED
IN THE
UNITED STATES

BUSINESS REPLY MAIL

FIRST CLASS MAIL PERMIT NO. 150 HICKSVILLE, NY

POSTAGE WILL BE PAID BY ADDRESSEE

COLD SPRING HARBOR LABORATORY PRESS
10 SKYLINE DRIVE
PLAINVIEW, NY 11803-2500



NO POSTAGE
NECESSARY
IF MAILED
IN THE
UNITED STATES

BUSINESS REPLY MAIL

FIRST CLASS MAIL PERMIT NO. 150 HICKSVILLE, NY

POSTAGE WILL BE PAID BY ADDRESSEE

COLD SPRING HARBOR LABORATORY PRESS
10 SKYLINE DRIVE
PLAINVIEW, NY 11803-2500



RESEARCH METHODS REVIEWS COMMENT



For fastest service, call:

1-800-843-4388

Continental U.S.
and Canada

516-349-1930

All other locations

FAX: 516-349-1946



**COLD SPRING HARBOR
LABORATORY PRESS**

COLD SPRING HARBOR



LABORATORY PRESS

READER SERVICE CARD

Please print clearly:

NAME																			
POSITION										TEL.									
ORGANIZATION																			
ADDRESS																			
CITY										STATE					ZIP CODE				
POSTAL CODE										COUNTRY									

Are you a subscriber?
YES ☐ NO ☐
Is this a pass-along copy?
YES ☐ NO ☐

For further information
WRITE assigned key
numbers in boxes below

Offer valid for 6 mos. from issue date.
For further information about advertisements and new products, write the number(s) corresponding to the number at the base of the item(s) of interest. Enter the issue date, your name and address, and return this card.

Issue date: 1994

PCR METHODS AND APPLICATIONS

Please check title(s) that most closely describe(s) your position:

- ☐ (1) Professor
- ☐ (2) Graduate student
- ☐ (3) Postdoctoral scientist
- ☐ (4) Lab director
- ☐ (5) Lab technician
- ☐ (6) Medical student
- ☐ (7) Undergraduate student
- ☐ (8) Librarian
- ☐ (9) Publisher

Please check your employment category:

- ☐ (1) University/college
- ☐ (2) Research institute/foundation
- ☐ (3) Hospital
- ☐ (4) Medical school
- ☐ (5) Industry
- ☐ (6) Government
- ☐ (7) Library/information center

Please check your primary field of interest:

- ☐ (1) Biochemistry
- ☐ (2) Cell biology
- ☐ (3) Developmental biology
- ☐ (4) Epidemiology
- ☐ (5) Genetics
- ☐ (6) Immunology
- ☐ (7) Microbiology
- ☐ (8) Molecular biology
- ☐ (9) Neurobiology
- ☐ (10) Plant biology
- ☐ (11) Pharmacology
- ☐ (12) Virology
- ☐ (13) Oncology
- ☐ (14) Other

READER SERVICE CARD

Please print clearly:

NAME																			
POSITION										TEL.									
ORGANIZATION																			
ADDRESS																			
CITY										STATE					ZIP CODE				
POSTAL CODE										COUNTRY									

Are you a subscriber?
YES ☐ NO ☐
Is this a pass-along copy?
YES ☐ NO ☐

For further information
WRITE assigned key
numbers in boxes below

Offer valid for 6 mos. from issue date.
For further information about advertisements and new products, write the number(s) corresponding to the number at the base of the item(s) of interest. Enter the issue date, your name and address, and return this card.

Issue date: 1994

PCR METHODS AND APPLICATIONS

Please check title(s) that most closely describe(s) your position:

- ☐ (1) Professor
- ☐ (2) Graduate student
- ☐ (3) Postdoctoral scientist
- ☐ (4) Lab director
- ☐ (5) Lab technician
- ☐ (6) Medical student
- ☐ (7) Undergraduate student
- ☐ (8) Librarian
- ☐ (9) Publisher

Please check your employment category:

- ☐ (1) University/college
- ☐ (2) Research institute/foundation
- ☐ (3) Hospital
- ☐ (4) Medical school
- ☐ (5) Industry
- ☐ (6) Government
- ☐ (7) Library/information center

Please check your primary field of interest:

- ☐ (1) Biochemistry
- ☐ (2) Cell biology
- ☐ (3) Developmental biology
- ☐ (4) Epidemiology
- ☐ (5) Genetics
- ☐ (6) Immunology
- ☐ (7) Microbiology
- ☐ (8) Molecular biology
- ☐ (9) Neurobiology
- ☐ (10) Plant biology
- ☐ (11) Pharmacology
- ☐ (12) Virology
- ☐ (13) Oncology
- ☐ (14) Other

READER SERVICE CARD

Please print clearly:

NAME																			
POSITION										TEL.									
ORGANIZATION																			
ADDRESS																			
CITY										STATE					ZIP CODE				
POSTAL CODE										COUNTRY									

Are you a subscriber?
YES ☐ NO ☐
Is this a pass-along copy?
YES ☐ NO ☐

For further information
WRITE assigned key
numbers in boxes below

Offer valid for 6 mos. from issue date.
For further information about advertisements and new products, write the number(s) corresponding to the number at the base of the item(s) of interest. Enter the issue date, your name and address, and return this card.

Issue date: 1994

PCR METHODS AND APPLICATIONS

Please check title(s) that most closely describe(s) your position:

- ☐ (1) Professor
- ☐ (2) Graduate student
- ☐ (3) Postdoctoral scientist
- ☐ (4) Lab director
- ☐ (5) Lab technician
- ☐ (6) Medical student
- ☐ (7) Undergraduate student
- ☐ (8) Librarian
- ☐ (9) Publisher

Please check your employment category:

- ☐ (1) University/college
- ☐ (2) Research institute/foundation
- ☐ (3) Hospital
- ☐ (4) Medical school
- ☐ (5) Industry
- ☐ (6) Government
- ☐ (7) Library/information center

Please check your primary field of interest:

- ☐ (1) Biochemistry
- ☐ (2) Cell biology
- ☐ (3) Developmental biology
- ☐ (4) Epidemiology
- ☐ (5) Genetics
- ☐ (6) Immunology
- ☐ (7) Microbiology
- ☐ (8) Molecular biology
- ☐ (9) Neurobiology
- ☐ (10) Plant biology
- ☐ (11) Pharmacology
- ☐ (12) Virology
- ☐ (13) Oncology
- ☐ (14) Other



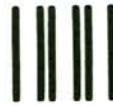
NO POSTAGE
NECESSARY
IF MAILED
IN THE
UNITED STATES

BUSINESS REPLY MAIL

FIRST CLASS PERMIT #5 COLD SPRING HARBOR, N.Y.

POSTAGE WILL BE PAID BY ADDRESSEE

Advertising Manager
Library Building
COLD SPRING HARBOR LABORATORY PRESS
PO Box 100
Cold Spring Harbor, NY 11724-2300



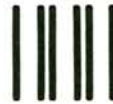
NO POSTAGE
NECESSARY
IF MAILED
IN THE
UNITED STATES

BUSINESS REPLY MAIL

FIRST CLASS PERMIT #5 COLD SPRING HARBOR, N.Y.

POSTAGE WILL BE PAID BY ADDRESSEE

Advertising Manager
Library Building
COLD SPRING HARBOR LABORATORY PRESS
PO Box 100
Cold Spring Harbor, NY 11724-2300



NO POSTAGE
NECESSARY
IF MAILED
IN THE
UNITED STATES

BUSINESS REPLY MAIL

FIRST CLASS PERMIT #5 COLD SPRING HARBOR, N.Y.

POSTAGE WILL BE PAID BY ADDRESSEE

Advertising Manager
Library Building
COLD SPRING HARBOR LABORATORY PRESS
PO Box 100
Cold Spring Harbor, NY 11724-2300



COLD SPRING HARBOR



LABORATORY PRESS



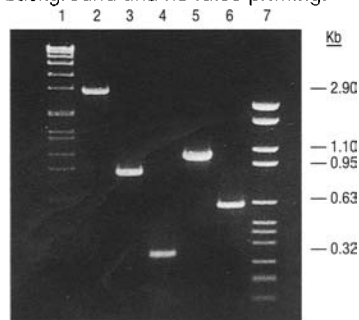
Specific purpose

The sharply curved bill of the white-tipped sickle-billed hummingbird is specifically designed to harvest nectar from the delicate tubular flowers of the heliconia plant.

High-performance Boehringer Mannheim *Taq* DNA Polymerase is designed and tested with an equally specific goal in mind: to produce absolutely specific amplification products in your polymerase chain reactions.

Each lot of *Taq* DNA Polymerase undergoes a unique self-priming assay to ensure that the enzyme is essentially free of endogenous DNA fragments.

The highest level of product purity is provided so that you achieve specific, high-yield amplification with no background and no false priming.



Specific amplification of five different single-copy genes from human genomic DNA using Boehringer Mannheim *Taq* DNA Polymerase. Lanes 1-7: DNA MWM VII, p53, Cystic fibrosis, FKBP 12, Collagen, Erythropoietin, DNA MWM VI.

Just one specific piece of a PCR system

Taq DNA Polymerase is just one specific enzyme in a full line of PCR products that includes these new items:

- **PCR Core Kit**—a complete kit for high-yield polymerase chain reactions
- **PCR Core Kit^{PLUS}**—high-yield PCR plus prevention of "carry over" contamination
- **PCR Nucleotide Mix**—ready-to-use nucleotides premixed in ratios optimized for PCR.

Licensed to perform

Boehringer Mannheim is a fully licensed supplier of PCR products, and your purchase conveys to you a license to perform PCR for research purposes.

Give us your specifics today

Rely on Boehringer Mannheim for all your PCR needs. Contact your Boehringer Mannheim representative for more information, or call us to place your order at 1-800-262-1640 (514-686-7141 in Canada).

These products are sold under licensing arrangements with Hoeche Molecular Systems and The Perkin-Elmer Corporation. Purchase of these products is accompanied by a license to use them in the Polymerase Chain Reaction (PCR) process in conjunction with an Authorized Thermal Cycler.

© 1993 Boehringer Mannheim. All Rights Reserved.

BOEHRINGER
MANNHEIM
PCR
HIGH
PERFORMANCE

*Leaving the
Limits Behind*

**BOEHRINGER
MANNHEIM**





From Cold Spring Harbor Laboratory Press

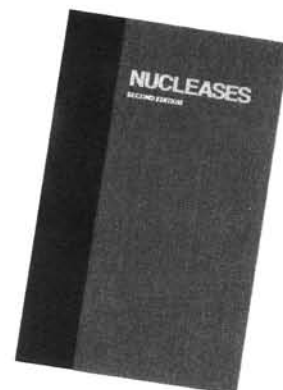
Nucleases, Second Edition

Monograph 25

Edited by Stuart M. Linn, *University of California, Berkeley*; R. Stephen Lloyd, *University of Texas Medical Branch, Galveston*; Richard J. Roberts, *New England Biolabs*

The 1982 publication *Nucleases* was the first book to survey this diverse and important group of enzymes. The new edition has been completely revised and updated. It provides a comprehensive review of all classes of nucleases, their modes of action and biological significance. The book is an invaluable source of information for investigators of DNA replication, recombination and repair and RNA processing, and for everyone interested in the rational use of nucleases as research reagents.

1993, 499 pp., illus., color plates, appendices, index
Cloth \$75 ISBN 0-87969-426-2



The RNA World

Monograph 24

Edited by Raymond F. Gesteland, *University of Utah*; John F. Atkins, *University of Utah*. With Foreword by Francis Crick and Prologue by James D. Watson

"The lively and authoritative chapters of this book deal comprehensively both with the hypothetical RNA world and with the complexities of RNA structure and function we find around us today. I recommend it to all molecular biologists and especially to anyone fascinated by the baroque complexity of the nucleic acids and of RNA in particular."

—Francis Crick

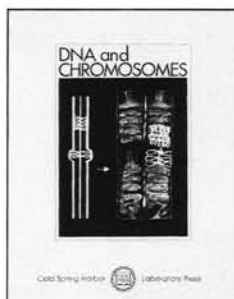
1993, 632 pp., illus., color plates, appendices, index
Cloth \$95 ISBN 0-87969-380-0



DNA and Chromosomes

Cold Spring Harbor Symposia on Quantitative Biology, Volume LVIII

Over 70 of the world's leading investigators discuss how DNA is replicated and repaired, genes are activated, silenced and transcribed, chromosomes replicate and move, and genomes are constructed. A unique compilation of recent insights into the most pressing questions in molecular genetics and cell biology.



Proceedings of the 1993 Symposium

Due first quarter 1994, 950 pp. (approx.), illus., color plates, indexes

Cloth \$210

ISBN 0-87969-065-8

Paper \$95

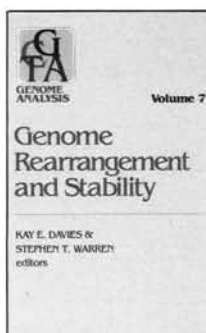
ISBN 0-87969-066-6

Genome Rearrangement and Stability

Genome Analysis, Volume 7

Edited by Kay E. Davies, *MRC Clinical Sciences Centre, Royal Postgraduate Medical School, London*; Stephen T. Warren, *Emory University School of Medicine, Howard Hughes Medical Institute*

The first book on the role of repetitive genomic sequences in the origins of human disorders such as fragile X syndrome, myotonic dystrophy and Huntington's disease. Also reviews studies in organisms such as yeast and trypanosomes that are illuminating the function of DNA once thought of as "junk."



1993, 165 pp., illus., index
Cloth \$49 ISBN 0-87969-388-6

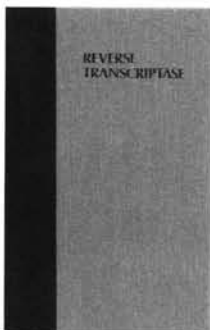
Reverse Transcriptase

Monograph 23

Edited by Anna Marie Skalka, *Fox Chase Cancer Center*; Stephen P. Goff, *Columbia University College of Physicians & Surgeons*

The first comprehensive review of the enzyme's biology. Includes rare discussions of RT's functions outside the context of retroviruses, the latest structural data on RT and a review of the antiviral activity of the enzyme's inhibitors.

1993, 492 pp., illus., index
Cloth \$85 ISBN 0-87969-382-7



To order, or request additional information:

Call: 1-800-843-4388 (Continental US and Canada) 516-349-1930 (All other locations)

FAX: 516-349-1946

Write: CSHL Press, 10 Skyline Drive, Plainview, N.Y. 11803

Reader Service No. 402



PERKIN ELMER

is pleased to sponsor the meeting:

A Decade of PCR

In Celebration of Ten Years of Amplification

PCR

to be held at

Cold Spring Harbor Laboratory

12 - 14 September, 1994

Perspective by Kary Mullis, Nobel Laureate

Topics to be covered will include:

- Biology of PCR
- PCR in the Human Genome Project
- PCR in diagnostics
- RNA differential display
- *In situ* PCR
- Microfabricated systems for PCR
- PCR products on microchips
- PCR automation
- Forensic science by PCR analysis
- Ancient DNA

For further information please contact:

Cold Spring Harbor Laboratory
Meetings Office

P.O. Box 100, Cold Spring Harbor, N.Y. 11724-2213

Telephone: (516) 367-8346 ♦ Fax: (516) 367-8845 ♦ E-Mail : meetings@cshl.org