

JUST RIGHT FOR...

AUTOMATION FOR THE COMPLETE LINEUP OF GENOMIC APPLICATIONS

For any throughput, for any application, the Fragment Analyzer™ is the premier instrument for simultaneously automating the qualification and quantification of nucleic acid fragments and smears.



More at AATI-US.

Soar Above. Discover More.

Expand Your Epigenetics Discovery by Sequencing More of the Methylome

Accel-NGS[®] Methyl-Seq Library Kit

- Simple 2-hour protocol
- DNA inputs from 100 pg to 100 ng
- Low bias library preparation
- Compatible with WGBS, RRBS, and other enrichment methods



© 2015, Swift Biosciences, Inc. The Swift logo is a trademark and the Accel-NGS logo and Accel-NGS are registered trademarks of Swift Biosciences.
12/15, 15-0565

The S is for Simplicity

The new Ion S5™ System.
Targeted sequencing has
never been simpler.

Simple library prep tools, cartridge-based reagents and automated data analysis have reduced DNA-to-data hands-on time to less than 45 minutes. So you'll spend less time doing routine molecular biology, and more time informing time-sensitive decisions.



Ion AmpliSeq™ technology

As little as 1 ng low-quality DNA sample input for library prep



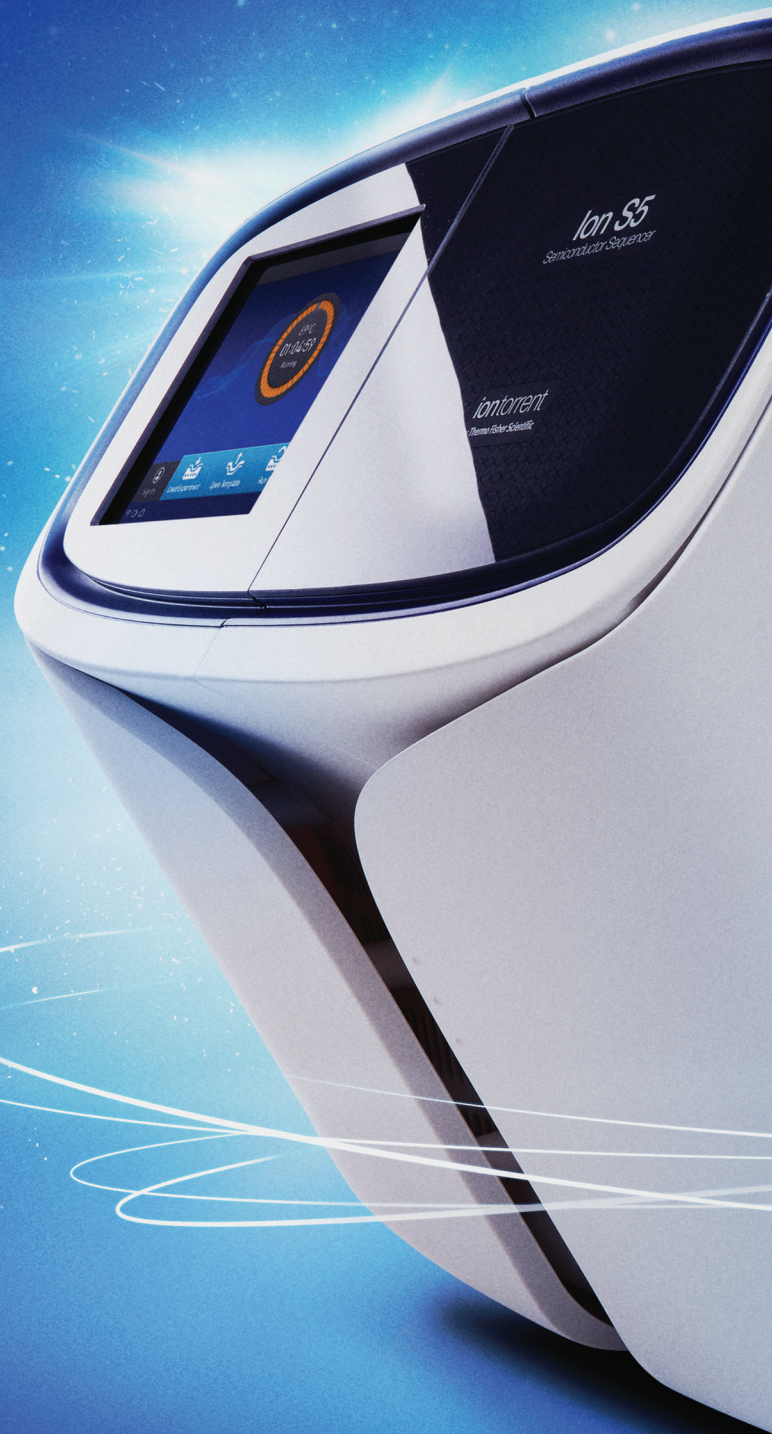
Cartridge-based reagents

Less than 15 minutes of sequencing setup time



2.5 to 4 hours of run time

Fastest run time of any benchtop sequencer



Watch the Ion S5 System in action at
thermofisher.com/ionS5

ThermoFisher
SCIENTIFIC



rRNA Depletion - Do it reasonably

RiboCop rRNA Depletion Kit

Crude RNA extract contains a vast amount of ribosomal RNA which is usually of less interest to most researchers, and depletion of those molecules is a critical process for efficient RNA-Seq.

However, with the solutions offered to date, it has been one of the most cost consuming processes within the RNA-Seq pipeline. We at Lexogen do not think this is reasonable at all. We believe Ribosomal RNA depletion should be easy and affordable for all researchers, and therefore we introduced the RiboCop rRNA Depletion Kit.

- ✓ Elimination of cytoplasmic and mitochondrial ribosomal RNA
- ✓ 1 hour of hands-on time
- ✓ USD 29.7/sample*

Free trial kits are available

Contact us at info@lexogen.com / +43 1345 1212 - 41
www.lexogen.com



*For a kit with 96 preps.

BD FACSseq™ Cell Sorter and BD™ Precise Assays

Gene expression assays for single cells



Helping all people
live healthy lives

NGS-ready samples for gene expression

Thousands of single cells, individually barcoded and indexed, now at the transcript level



The new BD FACSseq™ cell sorter selects thousands of individual cells, quickly discarding any dead/dying cells and then isolating them into PCR plates that contain preloaded BD™ Precise reagents for your customized targeted gene expression assays. A much simplified workflow prepares the samples for absolute and direct molecular counting of transcripts by next generation sequencing (NGS), while minimizing amplification bias that can potentially occur in these crucial steps.

The affordable BD FACSseq cell sorter combined with BD Precise assays lets you easily amp up your lab's productivity to help ensure that your high quality single cell samples are ready for gene expression assays. And, you can significantly increase data accuracy and throughput while controlling costs.

Find out how at
bdbiosciences.com/go/facsseq

Class 1 Laser Product.
For Research Use Only. Not for use in diagnostic or therapeutic procedures.
BD, BD Logo and all other trademarks are property of Becton, Dickinson and Company. © 2015 BD
23-17810-00

BD Biosciences
2350 Qume Drive
San Jose, CA 95131
bdbiosciences.com

Single Molecule & Single Cell Analysis

15 - 16 March 2016 • Madrid, Spain

#SMSCA2016

Keynote Speakers



Chwee Teck Lim
Professor
National University
of Singapore



Menno Prins
Professor
Eindhoven
University of
Technology



Ulf Landegren
Principal
Investigator
University of
Uppsala

Whether you are working in research & development, device integration, sample preparation, information management or device manufacturing, this meeting will explore the key challenges you face.

Registered delegates also benefit from unrestricted access to the co-located meetings, Lab-on-a-Chip Europe and Point of Care Diagnostics.

Register Now and save up to €200
selectbio.com/SMSCA2016

Agenda Topics

- Biological Heterogeneity
- Single Molecule Sequencing
- Liquid Biopsies
- Single Molecule Biosensing
- Digital PCR

Poster submission deadline
08 March 2016

SELECTBIO

enquiries@SELECTBIO.com +44 (0)1787 315110
Woodview, Bull Lane, SUDBURY, CO10 0FD, UK

Custom Oligonucleotides

- ◆ Regular oligos
- ◆ Long oligos
- ◆ Phosphorothioated oligos (S-Oligos)
- ◆ Modified oligos
- ◆ Fluorescent oligos
- ◆ Taqman probes
- ◆ Molecular beacon
- ◆ Oligo pool & microarray

Custom Peptide Synthesis

- ◆ Purities from desalt to 98%
- ◆ Acetylation/Amidation
- ◆ Phosphorylated peptides
- ◆ Fluorescein/Biotin labeled peptides
- ◆ Specialty peptides with unnatural amino acids
- ◆ Cyclic peptides
- ◆ KLH/BSA/OVA Conjugation
- ◆ Multiple Antigenic Peptides
- ◆ Peptide nucleic acid (PNA)

Works, straight out the box.



Sometimes your best ideas are simple, like using ultra-fast, isothermal DNA/RNA amplification *recombinase polymerase amplification* (RPA) with your next microfluidics, agriculture or water-testing project. It works with PCR primers straight out the box, no thermocycler needed.

Read over 80 inspirational RPA publications
twistdx.co.uk/publications

RPA. It really works.
twistdx.co.uk | +44 (0)1223 496700

AACR Annual Meeting

American Association
for Cancer Research

2016 • NEW ORLEANS

APRIL 16-20, 2016
ERNEST N. MORIAL
CONVENTION CENTER
NEW ORLEANS, LA

For more information visit
www.AACR.org/AACR2016

Delivering
Cures
Through
**Cancer
Science**

Join us in New Orleans

for the best cancer science and medicine meeting in the world...
the AACR Annual Meeting 2016!

You are invited to stretch your boundaries, form collaborations, attend sessions outside of your own area of expertise, and learn how to apply exciting new concepts, tools, and techniques to your own research.

Get your fill of ground-breaking cancer science each day, and then enjoy the great sounds, food, and culture that is New Orleans.

If you can only attend one cancer science meeting this year, the AACR's Annual Meeting is it!

Be sure to register early to take advantage of reduced rates!

Become a Member!

Join the AACR and enjoy substantially reduced registration rates, the privilege of sponsoring an abstract for the Annual Meeting, funding and award opportunities, and much more.

We look forward to seeing you in New Orleans!

EMBL 2016

Conferences

7 - 8 MAR | EMBL - EBI Workshop
SME Bioinformatics Forum
D. Clark, T. Hancocks, N. Shivji | EMBL-EBI Hinxton, UK

3 - 6 APR | EMBO | EMBL Symposium
Tumour Microenvironment and Signalling
A. Berns, P.P. Pandolfi, B. Pauly | EMBL Heidelberg, Germany

20 - 22 APR | EMBL Conference
The Epitranscriptome
M. Frye, D. O'Carroll | EMBL Heidelberg, Germany

8 - 11 MAY | EMBO | EMBL Symposium
New Model Systems for Linking Evolution and Ecology
D. Tautz, D. Weigel | EMBL Heidelberg, Germany

18 - 20 MAY | EMBL Conference
BioMalPar XII: Biology and Pathology of the Malaria Parasite
G. Christophides, F. Osier, A. Scholzen, T. Voss | EMBL Heidelberg, Germany

29 MAY - 1 JUN | EMBO | EMBL Symposium
Microtubules: From Atoms to Complex Systems
M. Dogterom, C. Janke, A. Musacchio, M. Steinmetz | EMBL Heidelberg, Germany

3 - 5 JUN | EMBL Conference
Hematopoietic Stem Cells: From the Embryo to the Aging Organism
K. Kissa, C. Lancrin, C. Lo Celso, C. Robin | EMBL Heidelberg, Germany

12 - 15 JUN | EMBL Conference
CTLS 2016 - Core Technologies for Life Science
P. England, R. Pepperkok, S. Shorte | EMBL Heidelberg, Germany

26 - 29 JUN | EMBO | EMBL Symposium
Innate Immunity in Host-Pathogen Interactions
Z. Chen, W.-D. Hardt, N. Pariente, F. Randow | EMBL Heidelberg, Germany

5 - 7 JUL | EMBL Conference
Lifelong Learning in the Biomedical Sciences
M. Hardman, C. Janke, C. Johnson | EMBL Heidelberg, Germany

24 - 26 JUL | EMBL Conference
Microfluidics 2016
C. Merten, S. Quake | EMBL Heidelberg, Germany

27 - 30 AUG | EMBL Conference
Transcription and Chromatin
D. Duboule, E. Furlong, A. Shilatifard, M. Timmers | EMBL Heidelberg, Germany

31 AUG - 3 SEP | EMBO Conference
Chemical Biology 2016
M. Köhn, J. Overington, C. Schultz | EMBL Heidelberg, Germany

7 - 10 SEP | EMBO | EMBL Symposium
Actin in Action: From Molecules to Cellular Functions
B. Baum, J. Faix, P. Lenart, D. Mullins, F. Nedelec, C. Sykes | EMBL Heidelberg, Germany

14 - 17 SEP | EMBL-Wellcome Genome Campus Conference
Proteomics in Cell Biology and Disease Mechanisms
A.-C. Gavin, A. Lamond, M. Mann | EMBL Heidelberg, Germany

25 - 27 SEP | EMBL-Wellcome Genome Campus Conference
Big Data in Biology and Health
E. Birney, B. Grossman, J. Korbel, C. Repton | EMBL Heidelberg, Germany

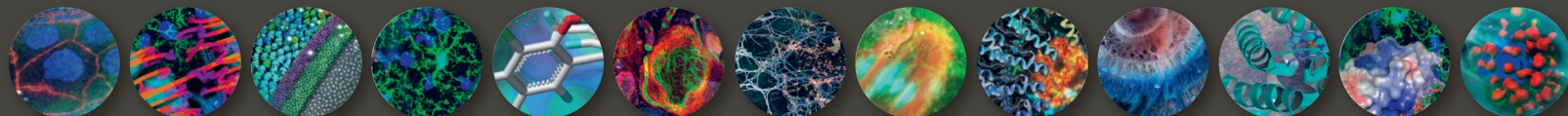
5 - 8 OCT | EMBO | EMBL Symposium
The Complex Life of mRNA
A. Ephrussi, N. Sonenberg, J. Steitz, D. Tollervey | EMBL Heidelberg, Germany

12 - 15 OCT | EMBO | EMBL Symposium
Organoids: Modelling Organ Development and Disease in 3D Culture
M. Bissell, J. Knoblich, E. Schnapp | EMBL Heidelberg, Germany

19 - 23 OCT | EMBO Conference
Experimental Approaches to Evolution and Ecology Using Yeast and Other Model Systems
J. Berman, M. Dunham, J. Leu, L. Steinmetz | EMBL Heidelberg, Germany

12 - 15 NOV | EMBO Conference
From Functional Genomics to Systems Biology
E. Furlong, F.C.P. Holstege, N. Rajewsky, M. Walhout | EMBL Heidelberg, Germany

20 - 23 NOV | EMBO Conference
Molecular Machines: Integrative Structural and Molecular Biology
J. Briggs, T. Carlomagno, G. Kleweg, D. Panne, D. Svergun | EMBL Heidelberg, Germany



4 - 7 APR, 3 - 6 OCT | EMBL-EBI Course
Introduction to Next Generation Sequencing
T. Hancocks, J. Randall, M. Rossello | EMBL-EBI Hinxton, UK

17 - 23 APR | EMBL Course
High-Accuracy CLEM: Applications at Room Temperature and *in cryo*
R. Meiliwig, M. Schorb | EMBL Heidelberg, Germany

18 - 22 APR | EMBL-EBI Course
Advanced RNA-Seq and ChIP-Seq Data Analysis
G. Rustici | EMBL-EBI Hinxton, UK

20 - 21 APR | EMBL Course
Transgenic Animals
J. Dreyer-Lamm, Y. Petersen, S. Stobrawa | EMBL Heidelberg, Germany

24 APR - 1 MAY | EMBO Practical Course
***In vivo* Plant Imaging**
M. Heisler, A. Maizel, R. Simon | EMBL Heidelberg, Germany

9 - 13 MAY, 11 - 15 JUL, 21 - 25 NOV | EMBL Courses
NGS: Enrichment Based Targeted Resequencing
V. Benes, J. Dreyer-Lamm, A. Heim | EMBL Heidelberg, Germany

9 - 13 MAY | EMBL-EBI Course
Networks and Pathways
T. Hancocks, S. Orchard | EMBL-EBI Hinxton, UK

21 - 26 MAY | EMBO Practical Course
Structural Characterisation of Macromolecular Complexes
T. Forsyth, D. Hart, M. S. López, M. Marcia, C. Petosa, D. De Sanctis | EMBL Grenoble, France

23 - 24 MAY, 4 - 5 JUL, 28 - 29 NOV | EMBL Courses
NGS: Whole Genome Sequencing Library Preparation
V. Benes, J. Dreyer-Lamm, A. Heim | EMBL Heidelberg, Germany

Courses

23 - 25 MAY | EMBL Course
Computational Aspects of High-Throughput Screening
J. Dreyer-Lamm, T. Hancocks, A. Hersey, J. Lewis, U. Uhrig | EMBL Heidelberg, Germany

23 - 27 MAY | EMBL-EBI Course
Bioinformatics of Plants and Plant Pathogens
P. Kersey | EMBL-EBI Hinxton, UK

29 MAY - 3 JUN | EMBO Practical Course
Non-Neuronal Optogenetics
H. Janovjak, S. De Renzi, J. Toettcher | EMBL Heidelberg, Germany

6 - 10 JUN | EMBL-EBI Course
Bioinformatics for Principal Investigators
S. Morgan | EMBL-EBI Hinxton, UK

5 - 11 JUN | EMBL Course
Biimage Data Analysis
K. Miura, P. Paul-Gilloteaux, S. Tosi | EMBL Heidelberg, Germany

13 - 17 JUN | EMBL-EBI-Wellcome Genome Campus Course
Summer School in Bioinformatics
T. Hancocks, S. Morgan | EMBL-EBI Hinxton, UK

19 - 23 JUN | EMBO Practical Course
Computational Biology: Genomes to Systems
P. Bork, F. Ciccarelli, J. Korbel, R. Krause | EMBL Heidelberg, Germany

20 - 24 JUN | EMBL Course
Fundamentals of Widefield and Confocal Microscopy and Imaging
F. Eich, J. Marquardt, S. Terjung | EMBL Heidelberg, Germany

27 JUN - 1 JUL | EMBL-EBI Course
Cancer Genomics
G. Rustici | EMBL-EBI Hinxton, UK

28 JUN - 1 JUL, 4 - 7 OCT | EMBL Courses
Whole Transcriptome Data Analysis
V. Benes, R. Calogero | EMBL Heidelberg, Germany

3 - 8 JUL | EMBL Course
Advanced Fluorescence Imaging Techniques
F. Eich, R. Pepperkok, S. Terjung | EMBL Heidelberg, Germany

3 - 8 JUL | EMBL-EBI-Wellcome Genome Campus Course
***In silico* Systems Biology**
L. Emery | EMBL-EBI Hinxton, UK

11 - 15 JUL | EMBL Course
Quantitative Proteomics
J. Krijgsveld, M. Savitski | EMBL Heidelberg, Germany

28 AUG - 5 SEP | EMBO Practical Course
Cryo-Electron Microscopy and 3D Image Processing
J. Briggs, B. Boettcher, L. Passmore, C. Sachse, H. Stahlberg | EMBL Heidelberg, Germany

29 AUG - 2 SEP | EMBL Course
Chromatin Signatures During Differentiation
J. Dreyer-Lamm, P. Grandi, K.-M. Noh | EMBL Heidelberg, Germany

12 - 14 SEP | EMBL-EBI Course
Metagenomics Bioinformatics
H. Denise, L. Emery, A. Mitchell | EMBL-EBI Hinxton, UK

12 - 20 SEP | EMBO Practical Course
Protein Expression, Purification and Characterization
C. Loew, R. Meijers, A. Parret | EMBL Hamburg, Germany

19 - 23 SEP | EMBL-EBI Course
Structural Bioinformatics
T. Hancocks, G. Kleweg, C. Orenco | EMBL-EBI Hinxton, UK

19 - 24 SEP | EMBL Course
Extracellular Vesicles: from Biology to Biomedical Applications
J. Dreyer-Lamm, A. Hendrix, E. Nolte-t Hoen | EMBL Heidelberg, Germany

17 - 24 OCT | EMBO Practical Course
Solution Scattering from Biological Macromolecules
A. Kikhney, D. Svergun | EMBL Hamburg, Germany

17 - 23 OCT | EMBO Practical Course
High-Throughput Microscopy for Systems Biology
J. Ellenberg, D.W. Gerlich, B. Neumann, R. Pepperkok | EMBL Heidelberg, Germany

7 - 11 NOV | EMBL-EBI-Wellcome Genome Campus Course
Resources for Computational Drug Discovery
T. Hancocks | EMBL-EBI Hinxton, UK

9 - 10 NOV | EMBL Course
Microinjection into Adherent Cells
J. Dreyer-Lamm, S. Stobrawa | EMBL Heidelberg, Germany

28 NOV - 2 DEC | EMBL-EBI Course
Biological Interpretation of Next Generation Sequencing
G. Rustici | EMBL-EBI Hinxton, UK

4 - 9 DEC | EMBL-EBI-Wellcome Genome Campus Course
Proteomics Bioinformatics
L. Emery | EMBL-EBI Hinxton, UK

7 - 11 DEC | EMBL Course
Microbial Communities: Modelling Meets Experiments
R. Mahadevan, K. Patil, K. Sasaki | EMBL Heidelberg, Germany



For full event listing please visit our website
www.embl.org/events

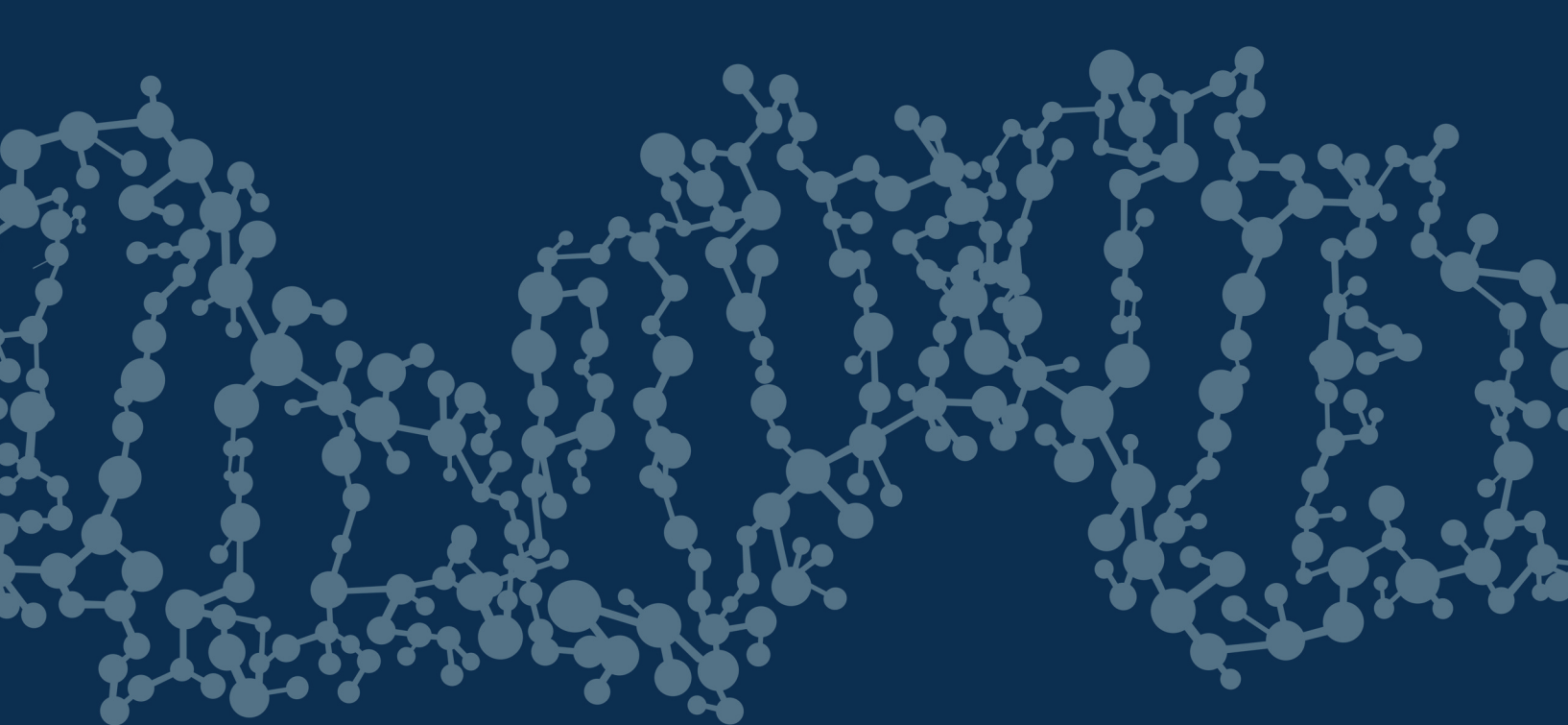


@emblevvents

We would like to thank the members of the EMBL ATC Corporate Partnership Programme:
Founder Partners: Leica Microsystems, Olympus
Corporate Partners: BD, Boehringer Ingelheim, GSK, Illumina, Thermo Fisher Scientific
Associate Partners: Eppendorf, Merck, Nikon, Sanofi

EMBL





LEAD NATIONAL-SCALE GENOMICS PROJECTS

We are scientists, engineers, communicators, and data lovers.
We are musicians, homebrewers, yogis, cyclists, and chess players.

Our team is passionate about how genomics and technology can impact and improve human health. And, as part of an innovative startup building the most advanced cloud computing platform for biomedical data analysis - that impact is huge.

**At Seven Bridges, turn your ideas, research,
and software into tools used by researchers
around the world.**

SevenBridges

jobs.sevenbridges.com



excellence

Detect RNA and protein simultaneously in millions of single cells

PrimeFlow® RNA Assay reveals the dynamics of RNA and protein expression within individual cells using a standard flow cytometer, facilitating unprecedented analysis of single cell biology.

Learn more at www.affymetrix.com/single-cell-genres

© 2015 Affymetrix, Inc. All rights reserved. For Research Use Only. Not for use in diagnostic procedures.