



BLOW UP YOUR GENOMICS WORKFLOW.

Automate nucleic acid QC and get on with your life sciences.

If sample QC takes you more than two minutes, it's too manual. Fragment Analyzer™ takes the job off your hands—streamlining lab operations and wiping out errors. Just pipette once and it delivers truly reliable results via automated capillary electrophoresis.

No chips. No tapes. No compromises.

- Setup in seconds
- Get resolution down to 2 base pairs
- Detection starts at 5 pg/μL

DITCH YOUR TIRED OLD WORKFLOW AT AATI-US.COM.



Ultra-pure dNTPs at unbeatable prices

Description

dNTPs contain dATP, dCTP, dGTP and dTTP (monosodium salts) at a concentration of 10mM or 100mM each in sterile deionized water at pH7.5, whose purity is up to 99.5% (HPLC). It is free of RNase and DNase, and suitable for any molecular biology application that requires pure deoxynucleotides, such as PCR, DNA sequencing, cDNA synthesis and nick translation.

Stability

All of our dNTPs are very stable – we guarantee 100% stability for 2 years from the date of purchase.

Features

- Ultra-pure: >99% by HPLC
- Reliable, consistent results
- Available both as ready-to-use mix and a set

Applications

- PCR and qPCR
- cDNA synthesis
- Primer extension
- DNA sequencing
- DNA labeling
- Mutagenesis

Quality control

- Purity assay (HPLC) >99%
- Free of pyrophosphate, DNA and RNA
- DNase, RNase and nickase free
- Tested for PCR, qPCR and RT-PCR



Beijing SBS Genetech Co. Ltd.

Fax: +86-10-82784290

Email: order@sbsbio.com Website: www.sbsbio.com

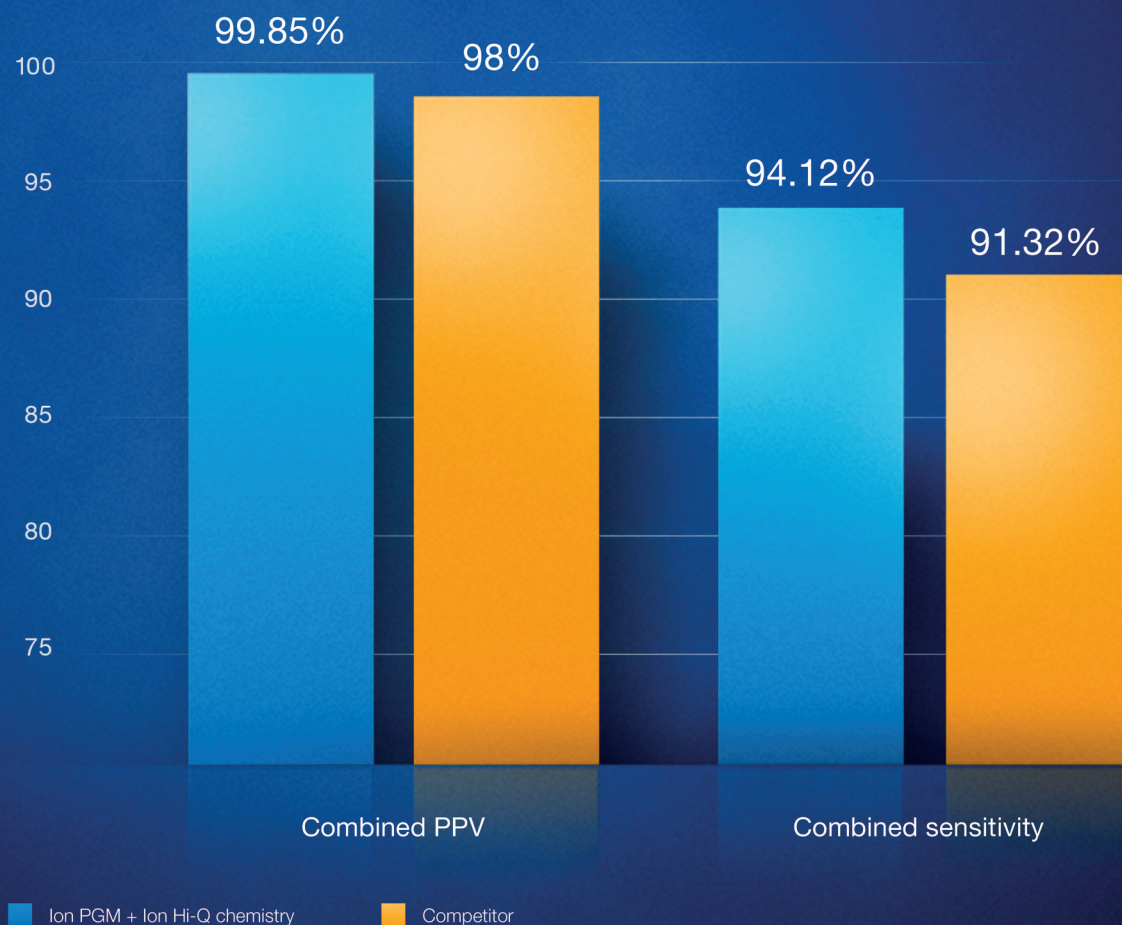
Raise your Hi-Q

Introducing Ion Hi-Q chemistry. Just as accurate. But faster!

Get the high-quality, reliable data you demand with new Ion Hi-Q™ chemistry. Available for both the Ion PGM™ and Ion Proton™ Systems, this new chemistry brings higher accuracy to the fastest benchtop sequencers in the world.

Speed OR accuracy? No need to choose.

Somatic variant calling accuracy



See the proof at lifetechnologies.com/hiq



FOR SCIENTISTS • BY SCIENTISTS

WWW.GRC.ORG

Sharing Ideas at the Frontiers of Science

There has never been a better time to experience a Gordon Research Conference! Our high quality, cost-effective meetings are widely recognized as the world's premier scientific conferences.

Using Evolutionary Perspectives to Inform Molecular Biology and Medicine, and Molecular Biology to Elucidate Evolutionary History and Mechanisms
Molecular Mechanisms in Evolution

June 28 - July 3, 2015
Stonehill College
Easton, MA

Emerging Research in the Etiology and Pathogenesis of a Complex Disease

Parkinson's Disease (NEW)

June 28 - July 3, 2015
Colby-Sawyer College
New London, NH

Advancing Biosystems Design

Synthetic Biology

June 28 - July 3, 2015
Sunday River
Newry, Maine

From Nucleotides to Genomes: Chromosome Biology in the Three Domains of Life

Chromosome Dynamics

June 28 - July 3, 2015
Waterville Valley
Waterville Valley, NH
Has associated GRS June 27-28

State-of-the-Art Human Genome Science: Illuminating Past and Shaping Future Controversies

Human Genetics & Genomics

July 19-24, 2015
Salve Regina University
Newport, RI

Has associated GRS July 18-19

Epigenetic Dynamics: Roles in Development, Inheritance, and Responses to the Environment

Epigenetics

August 2-7, 2015
Bentley University
Waltham, MA

Has associated GRS August 1-2

Gordon Research Seminars (GRS) are two day meetings for students and post-docs that precede an associated GRC.

Visit www.grc.org
for program details,
online application,
and more!



Looking for A Genomic Research Partner?

Next-Generation Sequencing(NGS)

Whole genome Sequencing (Hiseq X Ten)
Exome Sequencing
Targeted Sequencing
Long Read Sequencing
Transcriptome Analysis, small RNA
Epigenomics

Bio Informatics

Assembly / Mapping
Variant (SNP / Indel) calling
CNV & Breakpoints
Expression Profiles
DEGs / miRNA
Enrichment Profiles
Gene Annotation

Capillary Sequencing

Microarray

Oligonucleotide Synthesis

Genetically Engineered Mouse

Next-Gen Sequencing

Ultra-sensitive tools for single-cell mRNA-seq?

cDNA SYNTHESIS FOR NEXT-GEN SEQUENCING

The next generation of SMARTer[®] kits for ultra-low input sequencing

SMART-Seq[™] v4 Ultra[™] Low Input RNA Kit for Sequencing



The highest sensitivity ultra-low mRNA-seq kit yet

Building on our experience from three previous generations of SMARTer Ultra Low kits, and the work done by Rickard Sandberg's group at Ludwig Cancer Research on the SMART-Seq2 method, we've developed the SMART-Seq v4 Ultra Low Input RNA Kit for Sequencing: our most sensitive single-cell mRNA-seq kit. We continue to enhance direct cDNA synthesis from 1–1,000 intact cells (or 10 pg–10 ng of total RNA) by increasing the number of genes identified, maintaining sequencing platform compatibility, and improving data from GC-rich transcripts. The SMART-Seq v4 kit does this by incorporating the novel application of LNA technology used by the Ludwig team as well as innovations developed at Clontech. Our continuous drive to improve our already best-in-class tools helps you push the frontiers of ultra-low input RNA-seq.

See more by visiting
www.clontech.com/SMART-Seq-v4
or call 1.800.662.2566



Scan to find out more



Takara

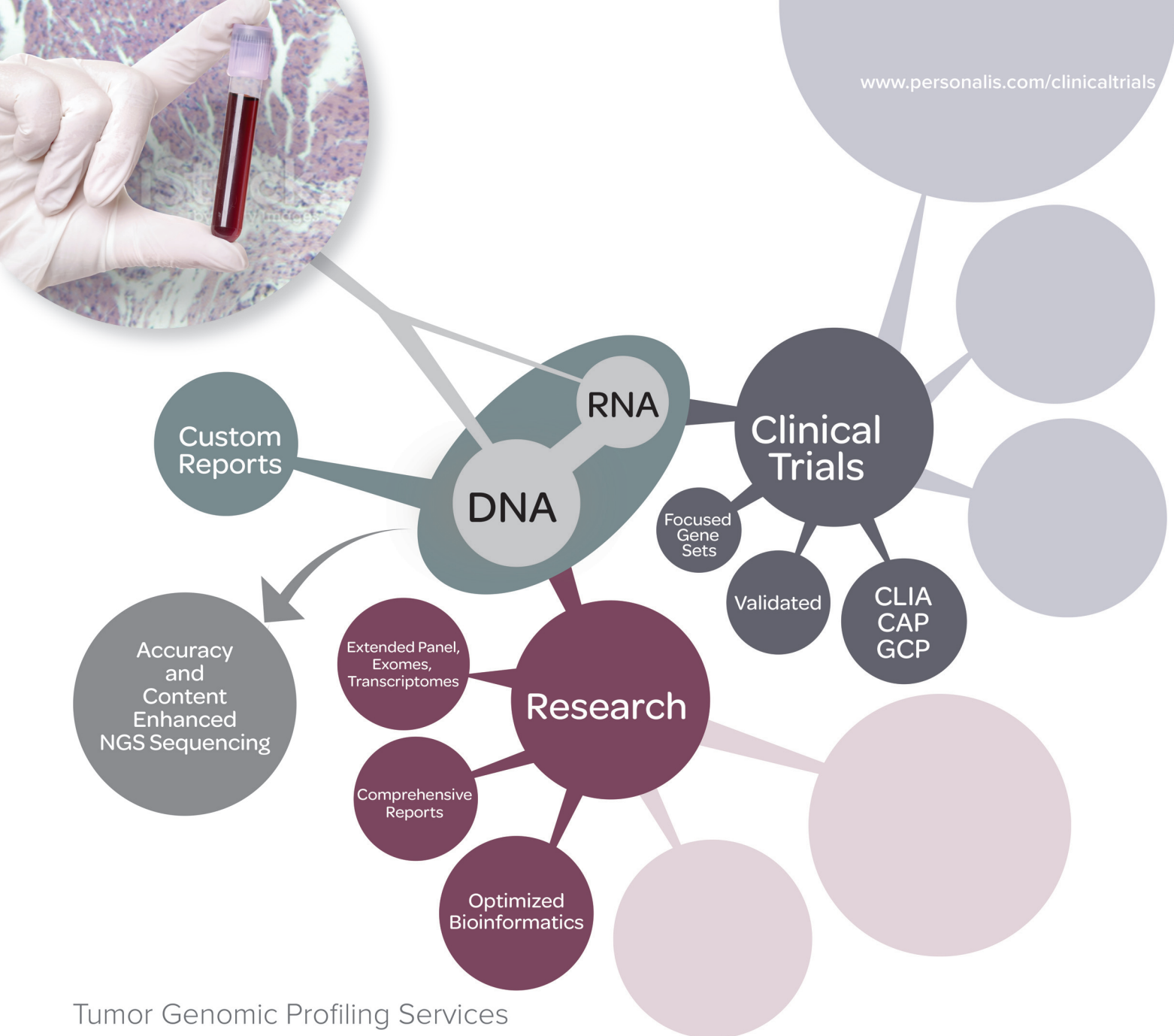


Clontech

Clontech Laboratories, Inc. • A Takara Bio Company

United States/Canada: +1.800.662.2566 • Asia Pacific: +1.650.919.7300 • Europe: +33.(0)1.3904.6880 • Japan: +81.(0)77.543.7247
For Research Use Only. Not for use in diagnostic or therapeutic procedures. Not for resale. Takara and the Takara logo are trademarks of TAKARA HOLDINGS, Kyoto, Japan. Clontech, the Clontech logo, SMART-Seq, SMARTer, Ultra, and that's GOOD science! are trademarks of Clontech Laboratories, Inc. All other marks are the property of their respective owners. Certain trademarks may not be registered in all jurisdictions. © 2015 Clontech Laboratories, Inc.

www.clontech.com 05.15 US (633648)



Tumor Genomic Profiling Services for Clinical Trials

Comprehensive Coverage, Tailored Results

Based on the Accuracy and Content Enhanced (ACE) platform, our advanced tumor profiling services provide the most complete genomic data from any tumor sample type. Our cancer panel includes coverage of over 1,300 genes, including clinically actionable genes, known driver mutations, immuno-oncology and key cancer pathway genes. Our service is tailored to address the needs of your clinical trial enrollment requirements while simultaneously making a broader research dataset available. As a result, we maximize the return on every tumor sample.

- ✓ DNA and RNA analysis from a single sample for maximum insight
- ✓ More coverage of key cancer pathway genes
- ✓ Alterations reported include SNVs, CNVs, gene fusions and low-level variant expression
- ✓ Comprehensive analysis with flexible reporting of the complete panel or a focused set of genes, depending on your requirements

www.personalis.com | info@personalis.com

+1 855-GENOME4 (436-6634)

+1 650-752-1300 (outside U.S.)



Personalis[®]
Pioneering Genome-Guided Medicine



THE INAUGURAL INTERNATIONAL CANCER IMMUNOTHERAPY CONFERENCE

The Reference Meeting for Scientists, Clinicians, Regulators, Drug Developers, and Patient Advocates

TRANSLATING SCIENCE INTO SURVIVAL

September 16-19, 2015

Sheraton New York Times Square Hotel
New York City

Abstract Submission Deadline: **June 10, 2015**

Advance Registration Deadline: **July 27, 2015**

The Cancer Research Institute (CRI), the Association for Cancer Immunotherapy (CIMT), the European Academy of Tumor Immunology (EATI), and the American Association for Cancer Research (AACR) are proud to join forces to sponsor the first International Cancer Immunotherapy Conference. This collaborative meeting will be held every other year, in lieu of each organization's individual meeting, and will alternate between the United States and Europe. We believe that by combining our efforts we can be more effective and efficient in disseminating the latest cutting-edge information.

To learn more, go to
CancerImmunotherapyConference.org
#cicon15

SCIENTIFIC PLANNING COMMITTEE

James P. Allison

The University of Texas MD Anderson Cancer Center,
Houston, Texas

Cedrik M. Britten

GlaxoSmithKline, Stevenage, United Kingdom

Glenn Dranoff

Dana-Farber Cancer Institute, Boston, Massachusetts

Alexander M. M. Eggermont

Institut Gustave Roussy, Paris, France

Carl G. Figdor

Radboud University of Nijmegen, Nijmegen,
The Netherlands

Wolf-Hervé Fridman

Centre de Recherche des Cordeliers, Paris, France

Philip D. Greenberg

Fred Hutchinson Cancer Research Center,
University of Washington, Seattle, Washington

Axel Hoos

GlaxoSmithKline, Collegeville, Pennsylvania

Elizabeth M. Jaffee

Johns Hopkins University, Baltimore, Maryland

Peter W. M. Johnson

University of Southampton, Southampton,
United Kingdom

Guido Kroemer

Centre de Recherche des Cordeliers, Paris, France

Nils Lonberg

Bristol-Myers Squibb, Milpitas, California

Cornelis J. M. Melief

Leiden University Medical Center, Leiden,
The Netherlands

Ellen Puré

University of Pennsylvania School of Veterinary
Medicine, Philadelphia, Pennsylvania

Robert D. Schreiber

Washington University, St. Louis, Missouri

PRESENTED BY



Expand Your Epigenetics Discovery by Sequencing More of the Methylome

Accel-NGS™ Methyl-Seq Library Kit for Illumina® Platforms

- Simple 2 hour protocol
- DNA inputs from 100 pg to 100 ng
- Low bias library preparation
- Compatible with WGBS, RRBS, and other enrichment methods



www.swiftbiosci.com



© 2015, Swift Biosciences, Inc. The Swift logo, Accel-NGS logo, and Accel-NGS are trademarks of Swift Biosciences. Illumina is a trademark of Illumina, Inc. 03/15, 15-0198

“RPA. It really works!”



Replace your slow PCR with a rapid, isothermal enzymatic process that really works. *RPA* uses a recombinase-based process instead of thermocycling to amplify DNA, resulting in **real-time detection within 15 minutes**, leaving you to enjoy more playtime.

Don't believe it? See the proof @
twistdx.co.uk/resources/publications

RPA - It really works
twistdx.co.uk | +44 (0)1223 496700

Break free from qPCR

Find gene targets faster



Validating gene targets with qPCR is often slow and costly due to lengthy primer design, experimental assay optimization, and sample processing time.

QuantiGene® Plex Assays validate gene targets faster:

- No RNA purification or reverse transcription is required
- Multiplex panels of up to 80 genes are functionally validated
- One QuantiGene Plex® plate provides as much information as 20 qPCR plates



Download **"The 7 best reasons to break free from qPCR"**
www.ebioscience.com/breakfree-genres

Biology for a better world.

NORTH AMERICA: 888-999-1371 ■ EUROPE: +43 1 796 40 40-305 ■ JAPAN: +81 (0)3 6430 4020 ■ INQUIRIES: info@ebioscience.com

©2015 Affymetrix, Inc. All rights reserved. For Research Use Only. Not for use in diagnostic or therapeutic procedures.