

BLOW UP YOUR GENOMICS WORKFLOW.

Automate nucleic acid QC and get on with your life sciences.

If sample QC takes you more than two minutes, it's too manual. Fragment Analyzer™ takes the job off your hands—streamlining lab operations and wiping out errors. Just pipette once and it delivers truly reliable results via automated capillary electrophoresis.

No chips. No tapes. No compromises.

- Setup in seconds
- Get resolution down to 2 base pairs
- Detection starts at 5 pg/μL

DITCH YOUR TIRED OLD WORKFLOW AT AATI-US.COM.



Expand Your Epigenetics Discovery by Sequencing More of the Methylome

Accel-NGS™ Methyl-Seq Library Kit for Illumina® Platforms

- Simple 2 hour protocol
- DNA inputs from 100 pg to 100 ng
- Low bias library preparation
- Compatible with WGBS, RRBS, and other enrichment methods



www.swiftbiosci.com



© 2015, Swift Biosciences, Inc. The Swift logo, Accel-NGS logo, and Accel-NGS are trademarks of Swift Biosciences. Illumina is a trademark of Illumina, Inc. 03/15, 15-0198

Targeted sequencing, now for any genome

Improve your research by using Ion AmpliSeq™ DNA custom panels



Ion Torrent™

Harness the power of Ion Torrent™ technology for a simple, scalable, and affordable sequencing solution. Create targeted DNA panels customized for fast and efficient variant detection using one of our preloaded genomes or by uploading a private reference sequence.

Find out more at lifetechnologies.com/ampliseqcustom

life
technologies

For Research Use Only. Not for use in diagnostic procedures. © 2015 Thermo Fisher Scientific Inc. All rights reserved. All trademarks are the property of Thermo Fisher Scientific and its subsidiaries unless otherwise specified. C013488 0115

A Thermo Fisher Scientific Brand

Next-Gen Sequencing

Ultra-sensitive
tools for single-cell
mRNA-seq?

cDNA SYNTHESIS FOR NEXT-GEN SEQUENCING

The next generation of SMARTer[®] kits for ultra-low input sequencing

SMART-Seq[™] v4 Ultra[™] Low Input RNA Kit for Sequencing



The highest sensitivity ultra-low mRNA-seq kit yet

Building on our experience from three previous generations of SMARTer Ultra Low kits, and the work done by Rickard Sandberg's group at Ludwig Cancer Research on the SMART-Seq2 method, we've developed the SMART-Seq v4 Ultra Low Input RNA Kit for Sequencing: our most sensitive single-cell mRNA-seq kit. We continue to enhance direct cDNA synthesis from 1–1,000 intact cells (or 10 pg–10 ng of total RNA) by increasing the number of genes identified, maintaining sequencing platform compatibility, and improving data from GC-rich transcripts. The SMART-Seq v4 kit does this by incorporating the novel application of LNA technology used by the Ludwig team as well as innovations developed at Clontech. Our continuous drive to improve our already best-in-class tools helps you push the frontiers of ultra-low input RNA-seq.

See more by visiting
www.clontech.com/SMART-Seq-v4
or call 1.800.662.2566



Scan to find out more



Takara



Clontech

Clontech Laboratories, Inc. • A Takara Bio Company

United States/Canada: +1.800.662.2566 • Asia Pacific: +1.650.919.7300 • Europe: +33.(0)1.3904.6880 • Japan: +81.(0)77.543.7247
For Research Use Only. Not for use in diagnostic or therapeutic procedures. Not for resale. Takara and the Takara logo are trademarks of TAKARA HOLDINGS, Kyoto, Japan. Clontech, the Clontech logo, SMART-Seq, SMARTer, Ultra, and that's GOOD science! are trademarks of Clontech Laboratories, Inc. All other marks are the property of their respective owners. Certain trademarks may not be registered in all jurisdictions. © 2015 Clontech Laboratories, Inc.

www.clontech.com 05.15 US (633648)

Visit Us @

ESHG 2015 (Glasgow, UK)

Stand 338

Personalis

Corporate Satellite @ ESHG 2015

SATURDAY, 6 June @ 12.15 – 13.45

Room Alsh 1

**Advancing Discovery and Diagnostics for
Inherited Disease and Cancer: Why Accuracy Matters**

Personalis® ACE Genomic Services

The Most Accurate and Comprehensive Genomic Services for Inherited Disease and Cancer

Personalis, provider of the Accuracy and Content Enhanced (ACE) Platform, is an advanced genomic services company providing the most accurate and comprehensive solutions for inherited disease and cancer. We perform whole human genome and exome sequencing for RUO and CLIA projects, utilizing manually-curated databases, human reference sequences, and sophisticated algorithms. Through this comprehensive approach, we provide genomic data and interpretation of the highest accuracy and quality.

- ✓ Enhanced coverage of ~8,000 genes of clinical importance
- ✓ Genome-wide structural variant detection
- ✓ Augmented coverage of over 1,300 cancer genes
- ✓ DNA and RNA analysis from a single sample

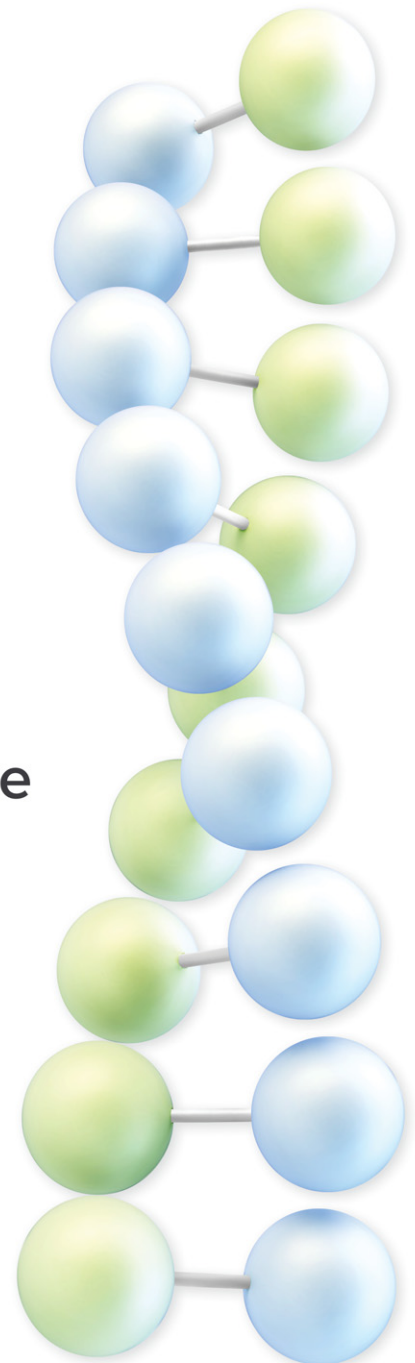


Personalis®
Pioneering Genome-Guided Medicine

www.personalis.com

info@personalis.com

+1 855 436-6634 | +1 650 752-1300





Looking for A Genomic Research Partner?

Next-Generation Sequencing(NGS)

Whole genome Sequencing (Hiseq X Ten)
Exome Sequencing
Targeted Sequencing
Long Read Sequencing
Transcriptome Analysis, small RNA
Epigenomics

Bio Informatics

Assembly / Mapping
Variant (SNP / Indel) calling
CNV & Breakpoints
Expression Profiles
DEGs / miRNA
Enrichment Profiles
Gene Annotation

Capillary Sequencing

Microarray

Oligonucleotide Synthesis

Genetically Engineered Mouse

Group leader position in bioinformatics

The Institute of genetic diseases *Imagine* at Necker Enfants-Malades Hospital, in Paris, is inviting applications for one group leader position in bioinformatics, computational biology, and/or statistical genetics.

Imagine is an interdisciplinary research center in molecular medicine in the Necker Enfants-Malades University Hospital campus. *Imagine* has a new home in the heart of the left bank of Paris, and offers cutting-edge research facilities. *Imagine* has been designated as an “Institut Hospitalo-Universitaire”, and is supported by a Foundation with a focus on genetic diseases, their biology and their life-long outcomes to address unmet basic and clinical research questions. We expect this research to result in the development of new biological concepts, diagnostic tools, and innovative therapeutics. The Institute is currently composed of 350 members in 25 laboratories working on a variety of genetic disorders and systems.

Imagine has excellent core facilities in genomics, bioinformatics, cell imaging, flow cytometry, pathology, and animal housing. The current bioinformatics platform comprises 7 engineers and computer analysts, and additional recruitments are ongoing. The platform has already developed a number of tools to analyze high-throughput genotyping, sequencing, and transcriptomic data.

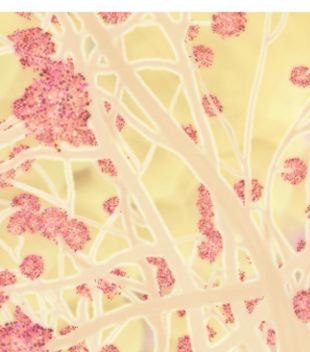
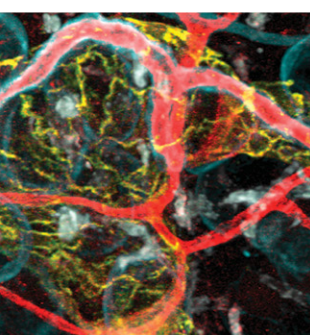
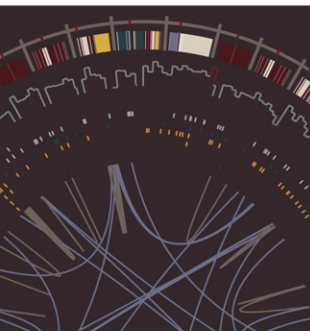
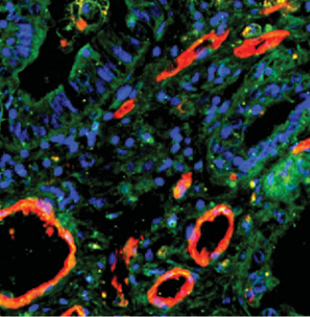
Imagine is now committed to further develop this domain of expertise by attracting one new research group with outstanding track record in the development, implementation, and application of innovative methods to analyze high dimensional data. This research group will closely interact with the *Imagine* laboratories and will have privileged access to a wide range of unique data. Applications can focus on any field related to bioinformatics, computational biology and/or statistical genetics, with a special emphasis on those that may offer strong opportunities of synergy with the present *Imagine* laboratories. Applications can be proposed at the level of either junior or senior group leader.

Applications should be submitted to Alain Fischer at the address below and must include:

- Complete CV including list of publications
- Past and current research interest (2 pages)
- Future research proposals (5 pages)
- At least three letters of recommendation

Address: newgroups@institutimagine.org (www.institutimagine.org)

Applications should be received by June 15th 2015 at the latest.



2015-2016 SCIENTIFIC CONFERENCES

Presenting the most significant research on cancer etiology, prevention, diagnosis, and treatment

Metabolism and Cancer

Co-Chairpersons: Ralph J. DeBerardinis, David M. Sabatini, and Almut Schulze
June 7-10, 2015 • Bellevue, WA

AACR Precision Medicine Series: Integrating Clinical Genomics and Cancer Therapy

Co-Chairpersons: Charles L. Sawyers, Elaine R. Mardis, and Arul M. Chinnaiyan
June 13-16, 2015 • Salt Lake City, UT

EACR-AACR-SIC Special Conference on Anticancer Drug Action and Drug Resistance: From Cancer Biology to the Clinic

Co-Chairpersons: Richard M. Marais, Pasi Jänne, and Riccardo Dolcetti
June 20-23, 2015 • Florence, Italy

Chromatin and Epigenetics in Cancer

Co-Chairpersons: Peter A. Jones, Sharon Y. R. Dent, and Charles W. M. Roberts
September 24-27, 2015 • Atlanta, GA

CRI-CIMT-EATI-AACR The Inaugural International Cancer Immunotherapy Conference: Translating Science into Survival

September 27-30, 2015 • New York, NY

Advances in Breast Cancer Research

Co-Chairpersons: Matthew J. Ellis, Charles M. Perou, and Jane E. Visvader
October 17-20, 2015 • Bellevue, WA

Advances in Ovarian Cancer: Exploiting Vulnerabilities

Co-Chairpersons: Kathleen R. Cho, Douglas A. Levine, and Benjamin G. Neel
October 17-20, 2015 • Orlando, FL

Fourth AACR International Conference on Frontiers in Basic Cancer Research

Chairperson: M. Celeste Simon;
Co-Chairpersons: James P. Allison, John E. Dick, Nathanael S. Gray, and Victor E. Velculescu
October 23-26, 2015 • Philadelphia, PA

Basic Science of Sarcomas

Co-Chairpersons: Robert G. Maki, Angelo Paolo Dei Tos, Jonathan A. Fletcher, Lee J. Helman, and Brian Van Tine
November 3-4, 2015 • Salt Lake City, UT

AACR-NCI-EORTC International Conference on Molecular Targets and Cancer Therapeutics

Scientific Committee Co-Chairpersons: Levi A. Garraway, Lee J. Helman, and Jean-Charles Soria
November 5-9, 2015 • Boston, MA

Pediatric Oncology

Co-Chairpersons: Scott Armstrong, Charles G. Mullighan, Kevin M. Shannon, and Kimberly Stegmaier
November 9-12, 2015 • Fort Lauderdale, FL

New Horizons in Cancer Research

Co-Chairpersons: Lewis C. Cantley and Carlos L. Arteaga
November 12-15, 2015 • Shanghai, China

Eighth AACR Conference on the Science of Cancer Health Disparities in Racial/Ethnic Minorities and the Medically Underserved

Co-Chairpersons: John M. Carethers, Marcia R. Cruz-Correa, Mary Jackson Scroggins, Edith A. Perez, Beti Thompson, and Cheryl L. Willman
November 13 - 16, 2015 • Atlanta, GA

Developmental Biology and Cancer

Co-Chairpersons: Hans Clevers, Stuart Orkin, and Suzanne Baker
November 30-December 3, 2015 • Boston, MA

Tumor Metastasis

Co-Chairpersons: Bruce R. Zetter, Melody A. Swartz, and Jeffrey W. Pollard
November 30-December 3, 2015 • Austin, TX

Noncoding RNAs and Cancer

Co-Chairpersons: Howard Y. Chang, Jeannie T. Lee, and Joshua Mendell
December 4-7, 2015 • Boston, MA

San Antonio Breast Cancer Symposium

Co-Directors: Carlos L. Arteaga, Virginia Kaklamani, and C. Kent Osborne
December 8-12, 2015 • San Antonio, TX

Tenth AACR-JCA Joint Conference

Conference Co-Chairpersons: Frank McCormick and Tetsuo Noda
February 16-20, 2016 • Maui, Hawaii

AACR Annual Meeting 2016

Program Committee Chairperson: Scott Armstrong
April 16-20, 2016 • New Orleans, LA

AACR American Association
for Cancer Research

FINDING CURES TOGETHER™

www.AACR.org/Calendar



TCGC

THE 4th ANNUAL

CLINICAL GENOME CONFERENCE

Mining the Genome for Medicine

JUNE 22-24, 2015 • HOTEL KABUKI • SAN FRANCISCO, CA



Join your peers and colleagues to share new findings and solutions for advancing the applications of clinical genome medicine.

The Clinical Genome Conference sparks vital discussion of applications, questions and solutions surrounding clinical genome analysis between scientists, physicians, diagnosticians, genetic counselors, bioinformaticists, ethicists, regulators, insurers, lawyers and administrators.

KEYNOTE SPEAKERS



Nathaniel Pearson, Ph.D.
New York Genome Center



Nathan D. Price, Ph.D.
Institute for Systems Biology



Laura J. van 't Veer, Ph.D.
University of California,
San Francisco

Mention keycode **CSHL00** and **Save \$100** off your conference registration.

For sponsorship, exhibit and lead generation information, please contact:

Elizabeth Lemelin | Business Development Manager
781-972-1342 | elemelin@healthtech.com

ClinicalGenomeConference.com



*Gordon
Research
Conferences*

FOR SCIENTISTS • BY SCIENTISTS

WWW.GRC.ORG

Sharing Ideas at the Frontiers of Science

There has never been a better time to experience a Gordon Research Conference! Our high quality, cost-effective meetings are widely recognized as the world's premier scientific conferences.

Using Evolutionary Perspectives to Inform Molecular Biology and Medicine, and Molecular Biology to Elucidate Evolutionary History and Mechanisms

Molecular Mechanisms in Evolution

June 28 - July 3, 2015
Stonehill College
Easton, MA

Emerging Research in the Etiology and Pathogenesis of a Complex Disease

Parkinson's Disease (NEW)

June 28 - July 3, 2015
Colby-Sawyer College
New London, NH

Advancing Biosystems Design

Synthetic Biology

June 28 - July 3, 2015
Sunday River
Newry, Maine

From Nucleotides to Genomes: Chromosome Biology in the Three Domains of Life

Chromosome Dynamics

June 28 - July 3, 2015
Waterville Valley
Waterville Valley, NH
Has associated GRS June 27-28

State-of-the-Art Human Genome Science: Illuminating Past and Shaping Future Controversies

Human Genetics & Genomics

July 19-24, 2015
Salve Regina University
Newport, RI

Has associated GRS July 18-19

Epigenetic Dynamics: Roles in Development, Inheritance, and Responses to the Environment

Epigenetics

August 2-7, 2015
Bentley University
Waltham, MA

Has associated GRS August 1-2

Gordon Research Seminars (GRS) are two day meetings for students and post-docs that precede an associated GRC.

Visit www.grc.org for program details, online application, and more!

“RPA. It really works!”



Replace your slow PCR with a rapid, isothermal enzymatic process that really works. *RPA* uses a recombinase-based process instead of thermocycling to amplify DNA, resulting in **real-time detection within 15 minutes**, leaving you to enjoy more playtime.

Don't believe it? See the proof @
twistdx.co.uk/resources/publications

RPA - It really works
twistdx.co.uk | +44 (0)1223 496700

Break free from qPCR

Find gene targets faster



Validating gene targets with qPCR is often slow and costly due to lengthy primer design, experimental assay optimization, and sample processing time.

QuantiGene® Plex Assays validate gene targets faster:

- No RNA purification or reverse transcription is required
- Multiplex panels of up to 80 genes are functionally validated
- One QuantiGene Plex® plate provides as much information as 20 qPCR plates



Download **"The 7 best reasons to break free from qPCR"**
www.ebioscience.com/breakfree-genres

Biology for a better world.

NORTH AMERICA: 888-999-1371 ■ EUROPE: +43 1 796 40 40-305 ■ JAPAN: +81 (0)3 6430 4020 ■ INQUIRIES: info@ebioscience.com

©2015 Affymetrix, Inc. All rights reserved. For Research Use Only. Not for use in diagnostic or therapeutic procedures.