



# Next-gen GWAS. NOW.

It's a content revolution.

Up to 50% more coverage of common and rare variants than all other arrays. Maximum power for any population.

The Omni family of microarrays can propel your studies into true next-gen GWAS. With a clearly defined product path to the future. Immediate utility. Future flexibility.

Get on the path to next-gen GWAS.

Now is the time. Get started at  
[www.illumina.com/GWAS](http://www.illumina.com/GWAS)

illumina®

I AM THE NEURON OF A  
CANCER PATIENT. A GENETICIST IS

LOOKING

FOR ANSWERS AND THINKS  
THAT I CAN HELP. I WANT TO DO MY  
PART TO COMBAT THIS DISEASE.  
THAT'S WHY I'M ON THE WAY TO  
EXPRESSION ANALYSIS.

EVERY SPECIMEN HAS A STORY. LET YOURS BE HEARD AT [GENOMICKNOWHOW.COM](http://GENOMICKNOWHOW.COM)

EXPRESSION  ANALYSIS®

Genomic Know-How™

# Get There Faster



## Reach your scientific destinations faster with the most accurate Hi-Res Melting® systems on the market.

Our LightScanner systems will take your lab to the next level of high-sensitive mutation screening and genotyping. As the pioneers of both rapid real-time PCR and Hi-Res Melting, Idaho Technology is the only company that offers a complete system capable of superior performance at an affordable price.

### LightScanner Express >>>

### Arrivals

**RAPIDLY GENERATE HIGH QUALITY GENE EXPRESSION DATA.  
SPECIALIZED FOR T/A HOMOZYGOTE SMALL AMPLICON GENOTYPING.  
GENOTYPE SAMPLES WITH GREATER SPECIFICITY THAN  
HYDROLYSIS PROBE GENOTYPING AT A FRACTION OF THE COST.**

Proven technology and exceptional customer support from the inventors of rapid PCR, the LightCycler®, and Hi-Res Melting.



Get on board at [www.hiresmelting.com](http://www.hiresmelting.com)





# GENOME RESEARCH

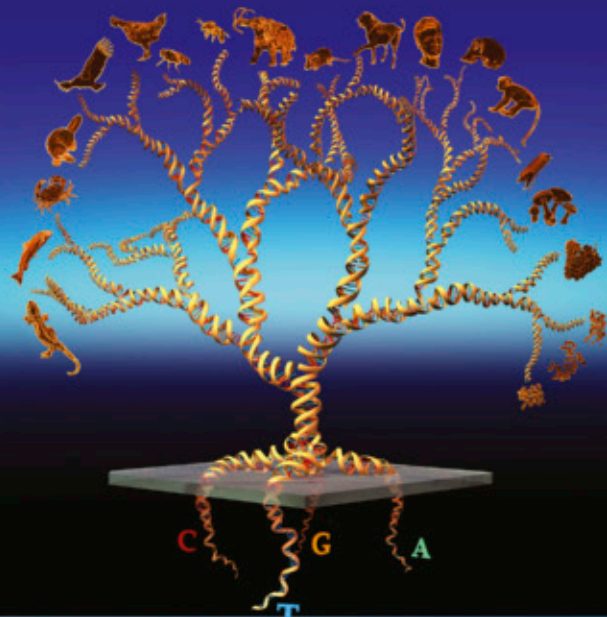
## Call for Papers in Cancer Genomics

The editors of *Genome Research* are seeking submissions of manuscripts offering novel biological insights gained from genomic analyses of cancer, including, but not limited to, functional genomic analyses of cancer genes, large scale cancer epigenomics, advances in technology of significant utility in cancer genomics studies and in the computational biology of cancer. We expect to coordinate the publication of these research, methods and resource reports in a Special Issue to appear in Autumn 2011.

If you would like your work to be considered, please submit online on or before May 1st, 2011 at *Genome Research* (<http://submit.genome.org/>) and include keywords “Cancer Genomics.”

When considering submission to *Genome Research*, please note *Genome Research* now ranks third amongst primary research journals in Genetics & Heredity, and is one of the top ten Molecular Biology journals. In addition to its high impact, *Genome Research* has rapid manuscript turn-around—on average less than 30 days—and posts accepted preprints online within hours. *Genome Research* remains committed to the community it serves, setting standards in data quality and accessibility, and offering an Open Access option for authors.

Please visit *Genome Research* (<http://genome.org/>) online for additional information about the journal. For more information about submitting your Cancer Genomics papers to *Genome Research*, please contact Executive Editor, Hillary Sussman: [hsussman@cshl.edu](mailto:hsussman@cshl.edu)



[www.454.com](http://www.454.com)

## GS Junior Sequencing System

# A **NEW** scale of sequencing – the **GS Junior System**

*Comprehensive transcriptome sequencing*

	orf count	% orf covered	Number of runs	Number of reads
<b>GS Junior System</b>	5,610	83.52	1	139,412
<b>GS FLX System</b>	5,598	83.34	1/8	133,158

**Table 1: Generate high-quality transcriptome data with the GS Junior System – the smaller-footprint, accessible 454 Sequencing platform.** Comparison of *S. cerevisiae* transcriptome data from a GS FLX Instrument run and a GS Junior Instrument run shows that gene transcript analysis results are nearly identical between the two instruments given the same number of reads. More than 80% of the open reading frames (orf) are covered in a single GS Junior Instrument run.

Transform your transcriptome analysis with the newest addition to the Roche genome sequencing portfolio – the **GS Junior System** – delivering the power, performance, and long (400 - 500 bp) reads of the GS FLX Titanium chemistry to your benchtop.

- **Obtain the sequence of expressed genes for a novel organism.**
- **Simplify analysis of unknown genomes by annotating cDNA sequences.**
- **Analyze the expression of various transcript isoforms.**

For complete information on the GS Junior System and all of the Roche sequencing solutions, visit [www.454.com](http://www.454.com) or contact your local Roche representative today.

**454**  
SEQUENCING

**For life science research only.  
Not for use in diagnostic procedures.**

454, 454 SEQUENCING, GS JUNIOR, and GS FLX are trademarks of Roche. Other brands or product names are trademarks of their respective holders. © 2011 Roche Diagnostics. All rights reserved.

Roche Diagnostics Corporation  
Roche Applied Science  
Indianapolis, Indiana



# TruSeq<sup>TM</sup>

The most accurate  
next-gen sequencing  
technology available.

Every Illumina sequencer is powered by TruSeq—the technology that delivers the most accurate human genome at any coverage. TruSeq produces the highest yield of error-free reads. The most bases over Q30. The greatest number of peer-reviewed publications—more than 1,000 in the past three years.

That's Tru data quality.

Get the proof. Go to

[www.illumina.com/TruSeq](http://www.illumina.com/TruSeq)



HiSeq<sup>2000</sup>



HiSeq<sup>1000</sup>



HiScan<sup>SQ</sup>



Genome Analyzer<sup>IIx</sup>



MiSeq<sup>2</sup>

illumina<sup>®</sup>

# From Human Genomic DNA to Fully-Assembled Complete Genomes of **RECORD QUALITY**

We help researchers conduct cancer and other disease research studies on large sample sets quickly and affordably – via a simple, outsourced service.

Our genome sequencing data is of the highest quality. The fully-assembled, research-ready datasets give you immediate access to comprehensive results that will help you rapidly identify genes and pathways modified in cancer and other human diseases. And, with minimal use of in-house computational resources.

Our comprehensive results include:

- **Variants:** SNPs, small indels, CNVs and SVs
- **Annotations:** RefSeq genes, dbSNP, ncRNAs
- **Supporting data:** Assembled sequence for each variant allele, reads, and mappings
- **Summary reports:** Coverage, library details, and variation call statistics
- **Analysis tools:** For genome comparison, somatic variation detection, annotation, and format conversion

We sequence up to 400 complete human genomes every month.

Send us genomic DNA samples from your large study and receive research-ready sequencing results of record quality in record time.

Learn more at:

[www.completegenomics.com/GR](http://www.completegenomics.com/GR)



Complete Genomics, Inc.

2071 Stierlin Court, Mountain View CA 94043 USA

Tel (650) 943-2800 | Email: [info@completegenomics.com](mailto:info@completegenomics.com)

Web: [www.completegenomics.com](http://www.completegenomics.com)

Complete Genomics has delivered more than 1,000 of the highest quality complete human genome sequencing datasets to researchers like you, all over the world.

For sample data, check out the 40 complete genomes on our website at:  
[www.completegenomics.com/sample](http://www.completegenomics.com/sample)

Copyright© 2011 Complete Genomics, Inc. All rights reserved. Complete Genomics and the Complete Genomics logo are trademarks of Complete Genomics, Inc. All other brands and product names are trademarks or registered trademarks of their respective holders.

Complete Genomics data is for Research Use Only and not intended for use in the treatment or diagnosis of any human subject.

# SURELY BETTER TRUSTED



**NEW SureSelect Kits:** Mouse Exome | RNA Capture  
Validated Automation Protocols | Additional Plus kits (All Exon v2, 50Mb and Kinome)

Agilent's SureSelect is the world's leading target enrichment system. It's the most proven, flexible, and comprehensive up-front capture solutions for next-generation sequencing.

- **BETTER FLEXIBILITY**  
100% compatible with the three leading NGS platforms.
- **BETTER PUBLISHED**  
More peer-reviewed publications than all other target enrichment solutions combined.
- **BETTER SCALABILITY**  
Meets the throughput needs of any size study.
- **BETTER PERFORMANCE**  
Delivers unsurpassed allelic balance; reliably captures SNPs, indels, and CNVs.



**Do the science you want to do—the way you want to do it.**  
Get SureSelect. [www.agilent.com/genomics/sureselect](http://www.agilent.com/genomics/sureselect)

© Agilent Technologies, Inc. 2011

The Measure of Confidence



**Agilent Technologies**

# DON'T JUST SONICATE IT. *EPI*SONICATE IT.



Introducing the EpiSonic™ Multi-Functional Bioprocessor 1000, a next generation sonication device perfect for DNA and chromatin shearing.

Learn more at  
[www.epigentek.com/episonic](http://www.epigentek.com/episonic)

- Achieves ideal DNA fragment sizes
- High yields of unbiased dsDNA
- Probe-less shallow waterbath
- Evenly distributes ultrasonic energy
- High rate of reproducibility
- Prevents risk of contamination
- Accommodates regular microplates
- Accommodates regular PCR plates
- True high throughput processing
- Digital control of power intensity
- Intuitive touchscreen interface
- Saves optimized sonication settings
- Real time temperature monitoring
- Temperature based auto-shutoff
- Integrates into your lab workflow
- Integrates into most cooling systems
- Soundproof enclosure
- Universal power supply
- Extended warranty included
- Made in USA
- Useable for many other applications

# Cold Spring Harbor Perspectives in Biology

The Authoritative View



NEW!

[www.cshperspectives.org](http://www.cshperspectives.org)

## A New Type of Review Journal

Cold Spring Harbor Laboratory Press announces the launch of a new monthly online publication, *Cold Spring Harbor Perspectives in Biology*. Spanning the complete spectrum of the molecular life sciences, the journal offers article collections that comprehensively survey topics in molecular, cell, and developmental biology, genetics, neuroscience, immunology, cancer biology, and molecular pathology. Written by leading researchers and commissioned by an eminent board of editors, subject collections grow with every issue of the journal. *Cold Spring Harbor Perspectives in Biology* is thus unmatched in its depth of coverage and represents an essential source for informed surveys and critical discussion of advances in emerging areas of biology.

**Scope:** Molecular Biology, Cell Biology, Developmental Biology, Genetics, Immunology, Neurobiology

**Monthly, online**

**ISSN: 1943-0264**

### Subject Coverage

Angiogenesis	The Extracellular Matrix	Mechanotransduction	Prokaryote Cell Biology
Antigen Processing	The Endoplasmic Reticulum	Membrane Fusion and Exocytosis	Protein Homeostasis
Apoptosis	The Evolution of Gene Networks	Mitochondria	Receptor Tyrosine Kinases
Auxin Signaling	Generation and Interpretation of Morphogen Gradients	Mitosis	Recombination Mechanisms
Axonal Guidance	Germ Cells	Molecular Motors	Regeneration
The Biology of Cardiovascular Disease	The Golgi Apparatus	Muscle Cell Biology	RNA Worlds
The Biology of Schizophrenia	Growth Factor Receptors	The NF- $\kappa$ B Family	Sex Determination
Calcium Signaling	Immune Cell Signaling	Nuclear Hormone Receptors	Symmetry Breaking in Biology
Cell-Cell Junctions	Immune Tolerance	The Nucleus	Synapses
Cilia and Flagella	Lipid Cell Biology	The Origin of Life	Transcriptional Regulation
The Cytoskeleton	Lymphocyte Cell Biology	The p53 Family	Wnt Signaling
DNA Damage and Repair	Mammary Gland Biology	Prions	The Y Chromosome



To order or request additional information, please visit our website or:

Call: 1-800-843-4388 (Continental US and Canada) 516-422-4100 (All other locations)

FAX: 516-422-4097

E-mail: [cshpress@cshl.edu](mailto:cshpress@cshl.edu)

Write: Cold Spring Harbor Laboratory Press, 500 Sunnyside Blvd., Woodbury, NY 11797-2924



# Discover More Sequence Less

## SeqCap EZ Choice



*It's the Easy Choice* for custom in-solution target enrichment

Algorithms Used	Simple Tiling Design	Sequence Capture Design
Targets Covered by Sequence	97.5 %	98.3 %
Bases with 5X Minimum Coverage	70.0 %	90.1 %
Bases with 10X Minimum Coverage	50.5 %	75.0 %

▲ **NimbleGen Sequence Capture design algorithm increases effective sequence coverage.** The exons from 1,000 genes were used as the targets. Both designs used similar amounts of sequencing in this experiment, however the Sequence Capture design algorithm produces a higher percentage of bases with  $\geq 10$  reads coverage compared to the simple tiling design.

- **Minimize sequencing cost, maximize results.**  
Our probe design algorithm delivers exceptional capture uniformity to enable equal or better variant discovery at only a fraction of the cost compared to other enrichment methods.
- **Capture YOUR regions of interest regardless of size.**  
With capture capabilities from 100 kb up to 50 Mb, SeqCap EZ Choice removes the size limitations imposed by other custom target enrichment solutions.
- **Easily complete your targeted resequencing projects.**  
NimbleGen SeqCap EZ Choice is an easy, scalable workflow with stable DNA probes and optimized protocols for both long-read and short-read technologies.

*Discover more for less at:*

[www.nimblegen.com/EZChoice](http://www.nimblegen.com/EZChoice)



For life science research only.  
Not for use in diagnostic procedures.

NIMBLEGEN and SEQCAP are trademarks of Roche.  
Other brands or product names are trademarks of their respective holders.  
© 2011 Roche NimbleGen, Inc. All rights reserved.

Roche NimbleGen, Inc.  
Madison, WI USA





# CAREER TRACKS

Dedicated entirely to Employment, Conferences, Meetings, Fellowships, and Grants



## University of Massachusetts Medical School Program in Bioinformatics and Integrative Biology

The newly established Program in Bioinformatics and Integrative Biology continues to invite applications for **tenure-track or senior tenured professor positions**. We are seeking innovative, energetic and collaborative individuals who plan to develop strong computational research programs to tackle problems in one of the following areas: regulatory genomics, comparative genomics, systems biology, RNA biology, evolutionary biology, statistical genetics, or proteomics. Exceptionally strong candidates in other computational biology areas will also be considered. Wet bench research space can be arranged for individuals who are interested in performing experiments to augment their computational efforts.

The Program in Bioinformatics and Integrative Biology is housed in a state-of-the-art research building with the neighboring Departments of Biochemistry and Molecular Pharmacology, Neurobiology, Cancer Biology, Medicine, and the Program in Gene Function and Expression. The Program has high-performance computing facilities and a full-time Bioinformatician to support the research activities of its faculty. Salary and start-up package will be competitive and commensurate with the high level of accomplishment expected for successful applicants.

Applicants should submit a cover letter explaining their interest in the Program, a curriculum vitae that includes honors, publications, and a succinct research plan to <http://www.academicjobsonline.org>. To expedite the review process, applicants should invite three individuals who are familiar with your work and potential for success to upload their recommendation letters at the same web address. Inquiries, but not application materials, may be directed to Professor Zhiping Weng at [zhiping.weng@umassmed.edu](mailto:zhiping.weng@umassmed.edu).

As an equal opportunity and affirmative action employer, UMMS recognizes the power of a diverse community and encourages applications from individuals with varied experiences, perspectives and backgrounds.

# QUANTITATIVE FINANCE

---

**RENAISSANCE TECHNOLOGIES**, a quantitatively based financial management firm, has openings for research and programming positions at its Long Island, NY research center.

## *Research & Programming Opportunities*

---

We are looking for highly trained professionals who are interested in applying advanced methods to the modeling of global financial markets. You would be joining a group of roughly one hundred fifty people, half of whom have Ph.D.s in scientific disciplines. We have a spectrum of opportunities for individuals with the right scientific and computing skills. Experience in finance is not required.

The ideal **research** candidate will have:

- A Ph.D. in Computer Science, Mathematics, Physics, Statistics, or a related discipline
- A demonstrated capacity to do first-class research
- Computer programming skills
- An intense interest in applying quantitative analysis to solve difficult problems

The ideal **programming** candidate will have:

- Strong analytical and programming skills
- An In depth knowledge of software development in a C++ Unix environment

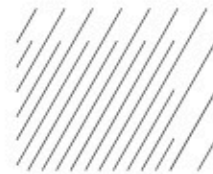
---

Compensation is comprised of a base salary and a bonus tied to company-wide performance.

---

Send a copy of your resume to: [careers@rentec.com](mailto:careers@rentec.com)  
No telephone inquiries.

# Renaissance



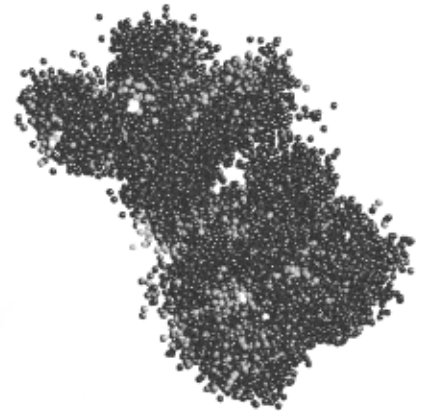
*An equal opportunity employer.*



# NCI-ICBP Sponsored Annual Workshops on Cancer Systems Biology



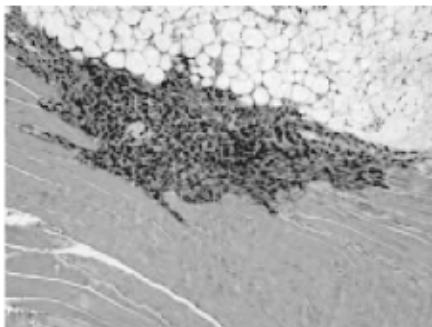
**Center of Cancer Systems Biology  
St. Elizabeth's Medical Center  
Boston, Massachusetts, USA**  
[www.cancer-systems-biology.org](http://www.cancer-systems-biology.org)



***Upcoming workshop:***  
**Systems Biology of Tumor Dormancy**  
**July 25-28, 2011**

**Planned Future Workshops:**

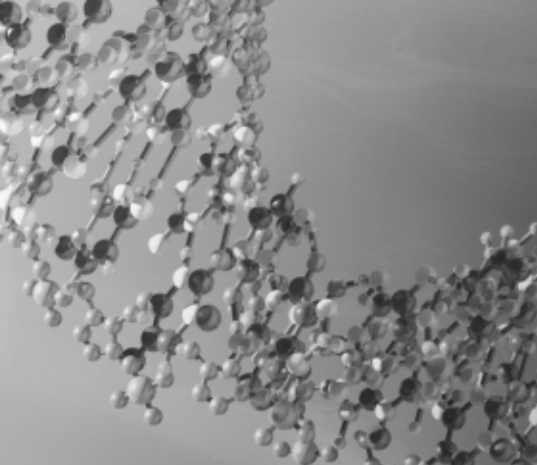
- 2012 Systems Biology of Cancer Progression and Metastasis**
- 2013 Systems Biology of Metronomic Treatment**
- 2014 Systems Biology of Tumor-Host Interactions**



The Center of Cancer Systems Biology is part of the National Cancer Institute's Integrative Cancer Biology Program (ICBP) which is the NCI's primary effort in cancer systems biology. Our Center brings together diverse researchers from biological, mathematical, physical and clinical backgrounds to better understand the molecular and tissue-level events underlying cancer initiation, evolution and progression.

St. Elizabeth's  
Medical Center

**Tufts** | School of  
UNIVERSITY | Medicine



SAVE THE DATE

# The Future of Genomic Medicine V

Thursday, March 1, and Friday, March 2, 2012 • Scripps Seaside Forum • La Jolla, California

A brochure will be mailed to you in the coming months. For more information, or to be added to our mailing list, please contact Scripps Conference Services & CME.

858-652-5400

[med.edu@scrippshealth.org](mailto:med.edu@scrippshealth.org)

[scripps.org/conferenceservices](http://scripps.org/conferenceservices)

