

TruSeqTM

The most accurate
next-gen sequencing
technology available.

Every Illumina sequencer is powered by TruSeq—the technology that delivers the most accurate human genome at any coverage. TruSeq produces the highest yield of error-free reads. The most bases over Q30. The greatest number of peer-reviewed publications—more than 1,000 in the past three years.

That's Tru data quality.

Get the proof. Go to

www.illumina.com/TruSeq



HiSeq[™] 2000

HiSeq[™] 1000

HiScan[™] SQ

Genome Analyzer[™] IIx

MiSeq[™]

illumina[®]

HELLO, I AM A CELL OF A
DIABETIC MAN. RESEARCHERS

H O P E

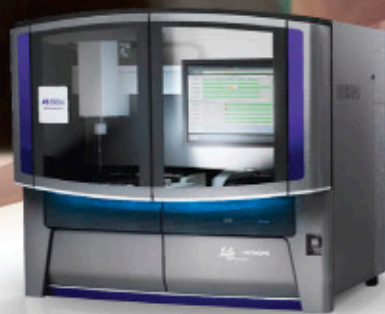
I CAN HELP DEVELOP A
NEW TYPE OF THERAPEUTIC.
I WANT TO MAKE A DIFFERENCE.
THAT'S WHY I'M ON THE WAY TO
EXPRESSION ANALYSIS.

EVERY SPECIMEN HAS A STORY. LET YOURS BE HEARD AT GENOMICKNOWHOW.COM



Genomic Know-How™

your research matters
demand **accuracy**



Introducing the NEW 5500 Series SOLiD[™] Sequencers

Discover what comes from accuracy. The new, totally redesigned 5500 Series SOLiD[™] Sequencers —now every lab can access a translational research platform with up to 99.99% accuracy.

- Accurate detection of somatic mutations or rare genetic variants
- Rapid and cost effective sample processing with flexible microfluidics FlowChip
- Simple adoption into your lab with streamlined data analysis and a robust, easy to use platform

There's a lot riding on the quality of your results.
That's why you need the 5500 Series SOLiD[™] Sequencer in your lab.



go to www.appliedbiosystems.com/solid5500

DOWNLOAD THE FREE MOBILE APP AT [HTTP://GETTAG.MOBI](http://GETTAG.MOBI) scan the barcode
to instantly access more information about the 5500 Series SOLiD[™] Sequencers

life
technologies[™]



Next-gen GWAS. NOW.

It's a content revolution.

Up to 50% more coverage of common and rare variants than all other arrays. Maximum power for any population.

The Omni family of microarrays can propel your studies into true next-gen GWAS. With a clearly defined product path to the future. Immediate utility. Future flexibility.

Get on the path to next-gen GWAS.

Now is the time. Get started at
www.illumina.com/GWAS

From DNA Sequence to Biological Relevance in **RECORD TIME**

Affordable, large-scale, complete human genome sequencing and analysis service that maximizes your discovery success

Complete Genomics has now delivered more than 1,000 complete human genomes to researchers like you, all over the world.

Our dedication to complete human genome sequencing and analysis enables scientists to conduct human disease research on large sample sets quickly and affordably—via a simple, outsourced service solution.

We produce the highest quality complete human genome datasets in the industry ^(1,2) including:

- Greater than 40x coverage (>50x on average)
- Over 90% of the genome and the exome confidently called (>95% on average)
- Comprehensive lists of annotated variants—including SNPs, indels, CNVs and SVs
- More than 400 genomes per month capacity

There are no expensive instruments to purchase, maintain and upgrade—and no complex laboratories to build and staff. You send us genomic DNA samples and receive research-ready sequencing results in record time.

Learn more at:

www.completegenomics.com/GR



Complete Genomics, Inc.

2071 Stierlin Court, Mountain View CA 94043 USA

Tel (650) 943-2800 | Email: info@completegenomics.com

Web: www.completegenomics.com

Copyright© 2011 Complete Genomics, Inc. All rights reserved. Complete Genomics and the Complete Genomics logo are trademarks of Complete Genomics, Inc. All other brands and product names are trademarks or registered trademarks of their respective holders.

Complete Genomics data is for Research Use Only and not intended for use in the treatment or diagnosis of any human subject.

References:

1. Drmanac R, Sparks AB, Callow MJ, et al., *Science* 327: 78-81. 2010.
2. Roach J, Glusman G, Smit AF, et al., *Science* 328: 636-639. 2010.



GENOME RESEARCH

Call for Papers in Cancer Genomics

The editors of *Genome Research* are seeking submissions of manuscripts offering novel biological insights gained from genomic analyses of cancer, including, but not limited to, functional genomic analyses of cancer genes, large scale cancer epigenomics, advances in technology of significant utility in cancer genomics studies and in the computational biology of cancer. We expect to coordinate the publication of these research, methods and resource reports in a Special Issue to appear in Autumn 2011.

If you would like your work to be considered, please submit online on or before May 1st, 2011 at *Genome Research* (<http://submit.genome.org/>) and include keywords “Cancer Genomics.”

When considering submission to *Genome Research*, please note *Genome Research* now ranks third amongst primary research journals in Genetics & Heredity, and is one of the top ten Molecular Biology journals. In addition to its high impact, *Genome Research* has rapid manuscript turn-around—on average less than 30 days—and posts accepted preprints online within hours. *Genome Research* remains committed to the community it serves, setting standards in data quality and accessibility, and offering an Open Access option for authors.

Please visit *Genome Research* (<http://genome.org/>) online for additional information about the journal. For more information about submitting your Cancer Genomics papers to *Genome Research*, please contact Executive Editor, Hillary Sussman: hsussman@cshl.edu

QUANTITATIVE FINANCE

RENAISSANCE TECHNOLOGIES, a quantitatively based financial management firm, has openings for research and programming positions at its Long Island, NY research center.

Research & Programming Opportunities

We are looking for highly trained professionals who are interested in applying advanced methods to the modeling of global financial markets. You would be joining a group of roughly one hundred fifty people, half of whom have Ph.D.s in scientific disciplines. We have a spectrum of opportunities for individuals with the right scientific and computing skills. Experience in finance is not required.

The ideal **research** candidate will have:

- A Ph.D. in Computer Science, Mathematics, Physics, Statistics, or a related discipline
- A demonstrated capacity to do first-class research
- Computer programming skills
- An intense interest in applying quantitative analysis to solve difficult problems

The ideal **programming** candidate will have:

- Strong analytical and programming skills
- An In depth knowledge of software development in a C++ Unix environment

Compensation is comprised of a base salary and a bonus tied to company-wide performance.

Send a copy of your resume to: careers@rentec.com
No telephone inquiries.

Renaissance



**Yale University School of Medicine
The Department of Genetics**

The Department of Genetics at Yale University School of Medicine is seeking to hire a tenure-track faculty member to develop a strong research program in genome informatics. We are particularly interested in candidates seeking to develop novel approaches to analyze next generation sequencing data from a broad range of biological sources. The rank of the successful applicant will be commensurate with experience.

The Department of Genetics comprises an exceptional group of 24 primary faculty with research interests including fundamental aspects of genetics, genomics and epigenetics, investigation of model systems such as flies, worms, fish and mouse, and human genetics and genomics. In addition, the Department has established a large-scale DNA sequencing center producing ~3.5 Tb per month, providing extremely rich genetic and functional genomic datasets for bioinformatics studies.

We strongly encourage applications from women and minority candidates. Curriculum vitae, a concise statement of research plans, and three letters of recommendation should be sent electronically and with hard copy to:

Richard P. Lifton, M.D., Ph.D.
Chairman Department of Genetics
Yale University School of Medicine
P.O. Box 208005
New Haven, CT 06520-8005
Genetics.admin@yale.edu

An Equal Opportunity/Affirmative Action Employer



**TENURE-TRACK ASSISTANT/ASSOCIATE
PROFESSORSHIP FACULTY POSITION**

Focusing on Genomics/Bioinformatics/Statistical Genetics

The Department of Biostatistics and Bioinformatics at the Tulane University School of Public Health and Tropical Medicine is seeking applications for two tenure-track faculty positions at the levels of associate/assistant professors. These two positions have particular emphasis on the interface of Biostatistics and Bioinformatics and the development and application of quantitative methods for high-throughput biological data analysis. Areas of interest include: genomics, proteomics, epigenomics, informatics, computational biology, statistical genetics, and biostatistical theory.

Responsibilities associated with these positions include statistical methodology and collaborative research, teaching, and the supervision of graduate students. We offer a supportive environment for faculty to participate in funded studies or develop new projects, in cooperation with research centers and other departments at the Health Sciences Campus.

Qualifications include a doctoral degree in biostatistics, statistical or quantitative genetics or a closely related field; strong record of or high potential for methodological research; skills in computer programming; intent and ability for scientific collaborative research and graduate level teaching; excellent oral and written communication skills. Candidates for associate professor should have an established record of funded research, collaboration, and teaching.

Salary and rank will be commensurate with experience. A letter summarizing experience and research interests, and a complete curriculum vitae including contact information for three references should be sent to: **Susan Gautier at sgautie@tulane.edu**. Applicants at the assistant professor level should also provide graduate level transcripts. Applications will be accepted until the positions are filled.

Tulane University is an EEO (Equal Employment Opportunity) /
AA (Affirmative Action) Employer.



uOttawa

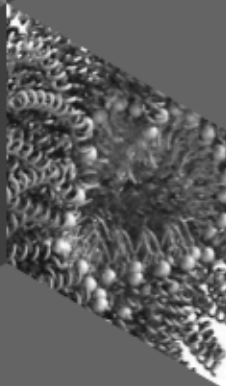
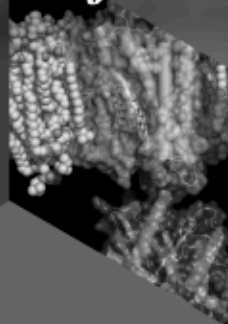
L'Université canadienne
Canada's university

Postdoctoral Training in Statistical Inference

Reliable interpretation of genomic information makes unprecedented demands for innovations in statistical methodology and its application to biological systems. This unique opportunity drives research at the Statomics Lab of the Ottawa Institute of Systems Biology (<http://www.statomics.com>) to marshal strengths of the frequentist, empirical Bayes, and Bayesian frameworks. The lab seeks a postdoctoral fellow who will collaboratively develop and apply novel methods of statistical inference to overcome current challenges in learning from genome-wide association data, neurodegenerative lipidomics data, and other data related to genomics.

Experience in computationally intensive data analysis is essential, as is the ability to quickly code reliable software implementing the statistical algorithms developed. Strong initiative, excellent communication skills, and reception of a PhD or equivalent doctorate in statistical genetics, statistics, bioinformatics, computer science, mathematics, physics, any field of engineering, or an equally quantitative field within four years prior to the start date are also absolutely necessary. The following qualities are desirable but not required: working knowledge of statistical genetics; familiarity with R, S-PLUS, Mathematica, C, Fortran, and/or LaTeX; experience in a UNIX or Linux environment.

To apply, send a PDF CV that has contact information of three references to dbickel@uottawa.ca, with "Statistics Postdoctoral Fellowship" and the year of your graduation or anticipated graduation in the subject field of the message. In the message body, concisely present evidence that you meet each requirement for the position and describe your most significant papers and software packages with summaries of how you contributed to them. All applicants are thanked in advance; only those selected for further consideration will receive a response.



Sharing Ideas at the Frontiers of Science

There has never been a better time to experience a Gordon Research Conference! Our high quality, cost-effective meetings are widely recognized as the world's premier scientific conferences.

Atherosclerosis
Understanding the Pathophysiology and Identifying New Modes of Prevention
June 19-24, 2011
Newport, RI

Cellular & Molecular Mechanisms of Toxicity *NEW!*
Understanding Innovative Mechanistic Toxicology in the Post-Genomic Era
August 7-12, 2011
Andover, NH

Chromosome Dynamics
July 10-15, 2011
West Dover, VT

CO₂ Assimilation in Plants: Genome to Biome
May 29 - June 3, 2011
Les Diablerets, Switzerland

Collagen
July 17-22, 2011
New London, NH

-and-
Collagen (GRS)
A two-day seminar for graduate students and post docs
Single Molecule Biophysics to Tissue Engineering
July 16-17, 2011
New London, NH

Ecological & Evolutionary Genomics
July 10-15, 2011
Biddeford, ME

Genetic Toxicology
July 10-15, 2011
Lucca (Barga), Italy

Hormone Action in Development & Cancer
July 31 - August 5, 2011
Smithfield, RI

-and-
Hormone Action in Development & Cancer (GRS)
A two-day seminar for graduate students and post docs
Hormonal Control of Development and Disease
July 30-31, 2011
Smithfield, RI

Human Genetics & Genomics
July 17-22, 2011
Newport, RI

Mammalian Gametogenesis & Embryogenesis
August 21-26, 2011
Waterville Valley, NH

Mycotoxins & Phycotoxins
June 12-17, 2011
Waterville, ME

-and-
Mycotoxins & Phycotoxins (GRS)
A two-day seminar for graduate students and post docs
Discovery and Risk Management of Harmful Biotoxins
June 11-12, 2011
Waterville, ME



Annual Conference of the German Genetics Society (GfG) Genetics 2011



Topics

- Developmental genetics
- Disease genetics
- Epigenetics
- Evolutionary genetics
- Molecular genetics
- Neuro- and behavioral genetics
- Population genetics and genetic epidemiology

Confirmed Speakers

D. Bergmann (Stanford/US)

A. Berns (Amsterdam/NL)

M. Beye (Düsseldorf/DE)

K. Campbell (Nottingham/GB)

G. Dreyfuss (Philadelphia/US)

C. Gross (Monterotondo/IT)

U. Grossniklaus (Zürich/CH)

L. Keller (Lausanne/CH)

R. Kopan (St. Louis/US)

C.P. Kyriacou (Leicester/GB)

A. Meyer (Konstanz/DE)

N. Rajewsky (Berlin/DE)

D.Y.R. Stainer (San Francisco/US)

Genetic network in plant cells

Genetic models for tumorigenesis

Honeybee sex determination

Genomic reprogramming in nuclear transfer

RNA and neuronal diseases

Anxiety circuits

Genetics of sexual and asexual reproduction in plants

Genetics of social organisation in ants

Genetic regulation of notch signalling

Genetics of circadian clocks

Speciation genetics in cichlid fish

Small RNAs and RNA binding proteins

Developmental genetics of vertebrate organ formation

Max Delbrück Lecture

H. Jäckle (Göttingen/DE)

Learning from flies: from body patterning to human health

Young Geneticists Programme

The Young Geneticists Programme is designed for students, PhD students and post-doctorates. It is intended to give young scientists an overview of career and funding possibilities.

Scientific organiser

Manfred Scharl

University of Würzburg (Physiologische Chemie)

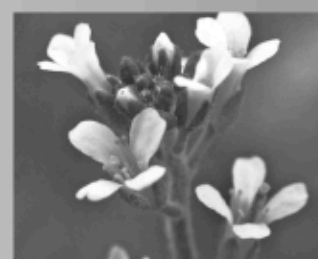
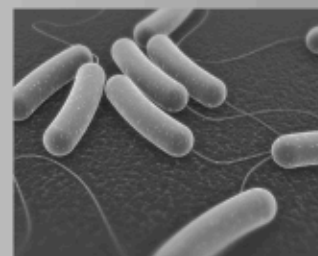
phch1@biozentrum.uni-wuerzburg.de

Homepage

www.conventus.de/genetics2011

Registration is free of charge for members of the GfG.

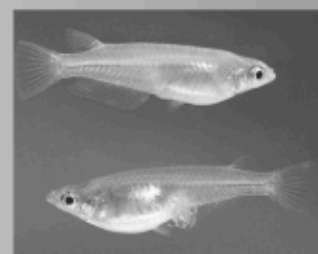
Abstract Deadline: 1 June 2011



14-16 September

2011

Würzburg • Germany



Join us for our first conference in Boston:



Changing Landscape of the Cancer Genome



Scientific Organizers: Lynda Chin, Christoph Lengauer and Michael Stratton

June 20–25, 2011 • Boston Park Plaza Hotel & Towers • Boston, Massachusetts • USA

Keynote Speaker: Tom Hudson, Ontario Institute for Cancer Research, Canada

Other Speakers: Andrea Califano, Columbia University, USA
Peter Campbell, Wellcome Trust Sanger Institute, UK
Elias Campo, University of Barcelona, Spain
Lynda Chin, Dana-Farber Cancer Institute, TCGA, USA
Arul M. Chinnaiyan, University of Michigan, USA
James J. Collins, Boston University, USA
James R. Downing, St. Jude Children's Research Hospital, USA
Giulio F. Draetta, Dana-Farber Cancer Institute, USA
Andy Futreal, Wellcome Trust Sanger Institute, UK
Stacey Gabriel, Broad Institute, USA
Levi A. Garraway, Dana-Farber Cancer Institute, USA
Gaddy Getz, Broad Institute, USA
Todd R. Golub, Broad Institute, USA
Iya G. Khalil, Gene Network Sciences, USA
Peter W. Laird, University of Southern California, Keck School of Medicine, USA
Christoph Lengauer, Sanofi-Aventis, France
Marco A. Marra, BC Cancer Agency, Canada
John D. McPherson, Ontario Institute for Cancer Research, Canada
Matthew L. Meyerson, Dana-Farber Cancer Institute, TCGA, USA
Franziska Michor, Dana-Farber Cancer Institute, USA
Michael Stratton, Wellcome Trust Sanger Institute, UK
Josh Stuart, University of California, Santa Cruz, USA
Victor E. Velculescu, Johns Hopkins University, USA
Marc Vidal, Dana-Farber Cancer Institute, USA
Barbara L. Weber, Novartis, USA
Richard Wilson, Washington University School of Medicine, USA
Meredith Yeager, Core Genotyping Facility, USA
Jessica Zucman-Rossi, INSERM U674, France

Session Topics: Integrative Cancer Genome Projects
Genome Technologies: Current State and 3rd Generation
Cancer Genome Analysis: Bioinformatics
Cancer Genome Analysis: Algorithm Development and Network Modeling
Genome Biology
Beyond the Genomes
Cancer Genomics and Drug Discovery
Workshop 1: Genome Technologies
Workshop 2: Genome Analysis Tools
Workshop 3: Late-Breaking Developments

KEYSTONE SYMPOSIA™
on Molecular and Cellular Biology
Accelerating Life Science Discovery

www.keystonesymposia.org/11F3 • 1.800.253.0685 • 1.970.262.1230

The Luxembourg Centre of Systems Biomedicine (LCSB) is an interdisciplinary research centre at the University of Luxembourg. The LCSB is accelerating biomedical research by closing the link between systems biology and medical research. Collaboration between biologists, medical doctors, computer scientists, physicists and mathematicians is offering new insights in complex systems like cells, organs, organisms or human populations. The University of Luxembourg is a multilingual, international research University.

The University of Luxembourg seeks outstanding postdoctoral research associates for the newly established Luxembourg Centre of Systems Biomedicine (LCSB), to participate in a strategic cooperation with the Institute of Systems Biology (ISB) in Seattle.



Research Associate in Computational/Systems Biology (m/f)

Ref. I1R-DIR-PAU-08PBPR

5-year-fixed term contract

Employee status, full-time



Fields of Research: The candidates will join collaborative groups to carry out research in the area of systems and computational biology, bioinformatics with a special focus on the analysis of disease-related networks.

Mission: The LCSB will be highly interdisciplinary research centre, integrating experimental biological and computational biology approaches in order to develop the foundation of a future predictive, preventive and personalised medicine. The candidates will contribute to the development of the LCSB by participating in a 5 year training and knowledge transfer program with ISB. They will spend a total of two years in residence in Seattle and return to potential positions at the LCSB in Luxembourg.

Profile: Qualified applicants must have a minimum of a MS Degree in one of the above mentioned disciplines (PhD, Postdoc strongly preferred) and at least two years research-experience in one or more of the disciplines listed above. Candidates with a strong background in Mathematics, Physics or Informatics are particularly encouraged to apply.

Offer: The University offers highly competitive salaries based on the candidate's experience and is an equal opportunity employer. Applicants should send their detailed CV, publication list, and references in English preferably in electronic form to katrin.effenberger@uni.lu no later than May 6th, 2011. All applications will be handled in the strict confidence.

For further information, please contact:

Prof. Dr. Rudi Balling, rudi.balling@uni.lu
Director of the Luxembourg Centre of Systems Biomedicine

Postal address:

University of Luxembourg
Luxembourg Centre of Systems Biomedicine
162, avenue de la Faiencerie
L-1511 Luxembourg
Luxembourg
www.lcsb.lu



The University of Luxembourg invites applications for the following vacancy in its Faculty of Science, Technology and Communication

Professor or Associate Professor in Computational Biology (M/F) – focus on stochastics, probabilistics and biostatistics

Ref. F1-100038

Employee status, full-time

Start date : 01/09/2011

Mission

- Teaching activities: Biostatistics, complex trait genetics, stochastics of biological systems in the Bachelor in Life Sciences as well as in the Master in Integrated Systems Biology
- Contribute actively to the development of research within the University's strategic research priority in "Life Sciences" by contributing his/her expertise in computational biology specifically in areas such as stochastic and statistical analysis of complex biological systems, mathematical and computational methods for probabilistic and stochastic modelling of biological systems and network analysis.
- Collaborate with other research teams of the Research Unit and with the new Interdisciplinary Center CSBL "Center for Systems Biology Luxembourg"

Profile

- PhD in applied mathematics, physics, engineering, computer- or biosciences
- Master or equivalent in Chemistry or Biochemistry
- Post-doctoral experience of at least five years.
- Strong publication record in computational and systems biology, specifically in the area of stochastic and statistical analysis of complex biological systems, model building and network analysis

The University of Luxembourg is set in a multilingual context. It is desired that the successful candidates will have a working knowledge in addition to English in at least one of the following languages: French and German. However, it is also possible to obtain proficiency in a second language after being hired as the University provides access to language classes. A basic knowledge of French has to be acquired during the first two years. For more information please contact Prof. Dr. Rudi Balling, rudi.balling@uni.lu, Director of the Luxembourg Centre of Systems Biomedicine, www.lcsb.lu.



Tenure-track Faculty Positions in Population, Quantitative, Computational, and/or Evolutionary Genetics, College of Agricultural and Life Sciences, University of Wisconsin-Madison

The College of Agricultural and Life Sciences at the University of Wisconsin (UW) -Madison has long been a world leader in experimental and theoretical population and quantitative genetics. To continue to build strength in these areas, we seek to hire two tenure-track assistant professors in the areas of population, quantitative, computational, and/or evolutionary genetics. Candidates for these positions will be considered in three broad research areas:

Integration of population genetics and genome-scale approaches to elucidate evolutionary mechanisms within and between populations

Quantitative genetics of economically important animals or crops

Integration of experimental, computational, and/or theoretical approaches to population and quantitative genetics

In addition, the successful candidates will help to promote a deeper and more profound understanding of population, quantitative and evolutionary genetics in UW undergraduate and graduate students. Faculty members hired through the initiative will be expected to spend part of their teaching efforts in courses that serve departmental needs and part of their efforts in courses that serve a broader college-wide and campus-wide community.

Areas of interest include experimental and theoretical research that draw fundamental insights into the connections between molecular function and genetic variation, experimental evolution, ecological genetics, and research that addresses emerging issues in human health, ecology, natural resources or food security; and quantitative and computational approaches that foster genetic improvement of agriculturally important animals or crops. Four departments have worked collaboratively to outline the vision and needs for the initiative: Agronomy, Animal Sciences, Entomology, and Genetics. Each faculty position will be located in one of these four departments.

The successful candidates will be capable of developing a strong, independent, extramurally-funded research program; developing an innovative undergraduate and graduate teaching program; building collaborative relationships in research and instructional programs; and contributing to service and outreach functions of the Department, College, University and professional societies.

Earned doctorate with expertise in population, quantitative, computational, and/or evolutionary genetics is required. Postdoctoral experience is highly desirable. Interested individuals are welcome and encouraged to contact Professor Irwin Goldman directly by phone at (608) 262-7781 or by email at ilgoldma@wisc.edu to discuss this position opportunity.

HOW TO APPLY: Send CV, a 1-2 page statement of research interests and plans, a statement of teaching philosophy, and arrange to have three letters of reference sent to Dr. Irwin Goldman, pvl66521, by mail to CALS/UW-Madison, 240 Agricultural Hall, 1450 Linden Drive, Madison, WI 53706 OR electronically to pvl66521@cals.wisc.edu.

Applicants can find further information on the Evolution Institute web site at www.evolution.wisc.edu or each of the four departmental websites:

Agronomy: <http://agronomy.wisc.edu/>
Animal Sciences: <http://www.ansci.wisc.edu/>
Entomology: <http://www.entomology.wisc.edu/>
Genetics: <http://www.genetics.wisc.edu/>

Applicants furnishing all materials by March 31, 2011 will receive priority in consideration.

NOTE: Unless confidentiality is requested in writing, information regarding the names of applicants must be released upon request. Finalists cannot be guaranteed confidentiality.

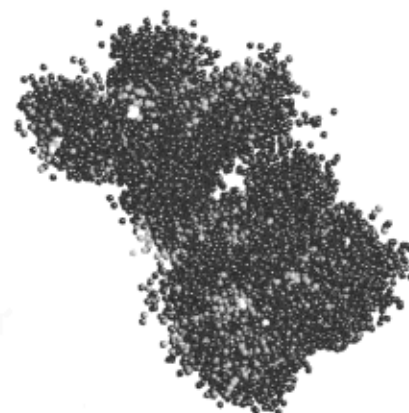
The College of Agricultural and Life Sciences views recruiting women and minority faculty members as central to its strategic goals. The University of Wisconsin is an Equal Opportunity and Affirmative Action Employer.



NCI-ICBP Sponsored Annual Workshops on Cancer Systems Biology



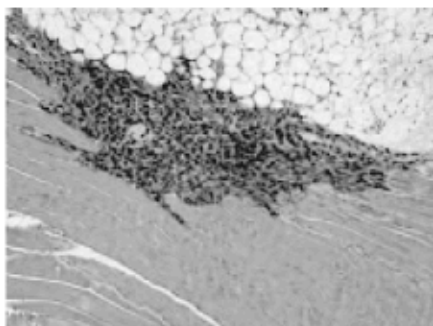
**Center of Cancer Systems Biology
St. Elizabeth's Medical Center
Boston, Massachusetts, USA**
www.cancer-systems-biology.org



Upcoming workshop:
Systems Biology of Tumor Dormancy
July 25-28, 2011

Planned Future Workshops:

- 2012 Systems Biology of Cancer Progression and Metastasis**
- 2013 Systems Biology of Metronomic Treatment**
- 2014 Systems Biology of Tumor-Host Interactions**



The Center of Cancer Systems Biology is part of the National Cancer Institute's Integrative Cancer Biology Program (ICBP) which is the NCI's primary effort in cancer systems biology. Our Center brings together diverse researchers from biological, mathematical, physical and clinical backgrounds to better understand the molecular and tissue-level events underlying cancer initiation, evolution and progression.

St. Elizabeth's
Medical Center

Tufts | School of
UNIVERSITY | Medicine