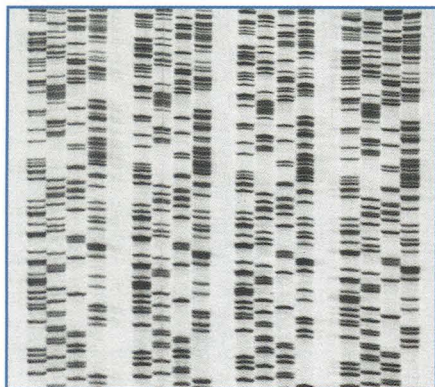
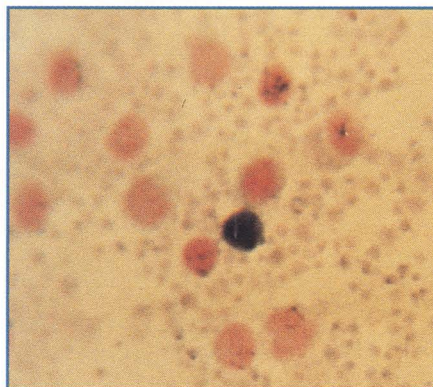


# Our Expanding AmpliTaq Family.



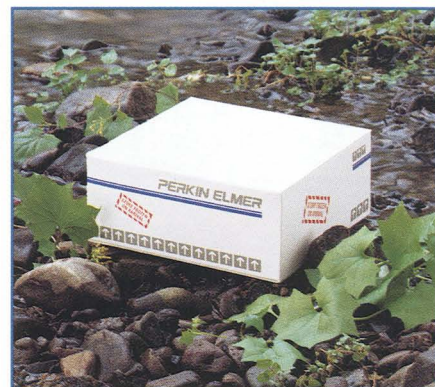
**AmpliTaq® DNA Polymerase  
for DNA Sequencing** is spe-

cially formulated for DNA sequencing. It can be purchased separately or as a component of the AmpliTaq® Cycle Sequencing Kit for direct sequencing of PCR products and double-stranded DNA or the AmpliTaq® Sequencing Kit for sequencing single-stranded DNA.



**New savings for AmpliTaq®  
DNA Polymerase**, the most

published PCR enzyme and the enzyme of choice for most applications, including emerging techniques such as *in situ* PCR. Special quantity multipacks, containing 1000-unit and 250-unit vials, offer significant savings compared to the single 250-unit vial.



**New AmpliTaq® DNA  
Polymerase, AS** lets you

save even more on AmpliTaq DNA Polymerase by specifying ambient shipping and lowering delivery charges. It represents an environmentally sound option.

**In the U.S., call PE Xpress at 1-800-762-4002 to order. Or call 1-800-762-4001 for technical information. Outside the U.S., contact your local Perkin-Elmer sales representative.**

## PERKIN ELMER

Europe Vaterstetten, Germany Tel: 49-8106-381-115 Fax: 49-8106-6697  
Canada Montreal, Canada Tel: 514-737-7575 Fax: 514-737-9726  
Far East Melbourne, Australia Tel: 61-3-560-4566 Fax: 61-3-560-3231  
Latin America Mexico City, Mexico Tel: 52-5-651-7077 Fax: 52-5-593-6223

Perkin-Elmer PCR reagents are developed and manufactured by Roche Molecular Systems, Inc., Branchburg, New Jersey, U.S.A.



Perkin-Elmer is a registered trademark of The Perkin-Elmer Corporation. AmpliTaq is a registered trademark of Hoffmann-La Roche Inc. and F. Hoffmann-La Roche A.G. The GeneAmp PCR process is covered by U.S. patents owned by Hoffmann-La Roche Inc. and F. Hoffmann-La Roche A.G.



# DNA Synthesis for PCR

## Quality Primer Synthesis In Your Own Lab: The First Step in Perfect PCR.

When your primer is right, PCR can deliver results in record time. When it's wrong, the time lost is gone forever. Flawless synthesis of well-designed primers is the first step toward perfect PCR. We guarantee primers produced on an Applied Biosystems 392 DNA/RNA Synthesizer to be  $\geq 99.8\%$  chemically authentic, yet they are easy and affordable to make.



The 392 is fully automated, from initial phosphoramidite dilution through final cleavage from the synthesis support. It simultaneously synthesizes both PCR primers. Simply key in the sequences and

press "start synthesis." The 392 does the rest. And it can be upgraded easily from two to four columns as your needs grow.

Its 40-nmol synthesis scale on polystyrene supports reduces reagent use, increases the useful life of phosphoramidites by 50%, and yields a higher percentage of desired product than any alternative. Even desalting, the final preparation for PCR, is simple with our patented oligonucleotide purification cartridge (OPC™).

Says one user, "As long-time users of Applied Biosystems instruments and reagents, we have rated them 'excellent' for reliability and ease of use, as well as the high quality of synthesis."<sup>\*</sup>

Wherever you are, our worldwide manufacturing and delivery network supplies fresh reagents and phosphoramidites without delay. As an Applied Biosystems customer, you also benefit from a broad



range of technical service and support.

Besides PCR primers, the 392 makes it easy to synthesize antisense oligonucleotides, ribozymes, and sequencing primers. Phone us to find out how the 392 can accelerate your research, and we'll send you a free copy of our new reference manual, *Evaluating and Isolating Synthetic Oligonucleotides*. Phone Applied Biosystems at: **Australia** (03) 808-7777, **Benelux** (0)3465-74868, **Canada** (800)668-6913, **France** (1) 48.63.24.44, **Germany** 0 61 51/87 94-0, **Italy** (02) 8912 6011, **Japan** (03) 3699-0700, **U.K.** (0925) 825650, **U.S.** (800) 345-5ABI.



OPC is a trademark of Applied Biosystems Inc. ©1992 Applied Biosystems, Inc.  
\* Eva Kvist, Scandinavian Gene Synthesis AB, Köping, Sweden.  
The GeneAmp® PCR process is covered by U.S. Patents owned by Hoffmann-LaRoche Inc. and issued and pending patents owned by F. Hoffmann-LaRoche A.G.



# Fireproof Success!

**DynaZyme — a new efficient  
thermostable DNA polymerase**



- **Source:**  
*Thermus brockianus* (F500)
- **2-fold lower error frequency\*** than that of *Taq* DNA polymerase
- **Better thermal stability** than that of *Taq* DNA polymerase: half life of 2.5 h at 96 °C
- **Associated enzyme activities:**  
5'→3' DNA polymerase  
5'→3' exonuclease
- **Easy to optimize** for primer extension reactions

\* The fidelity of both DynaZyme and *Taq* DNA polymerase was measured by the forward mutational assay described by Tindall and Kunkel, 1988, *Biochemistry* **27**: 6008-6013.

**DYNA  
Zyme**

- it makes the difference!



**Finnzymes Oy**

**New Creative Touch**

P.O.Box 148, 02201 Espoo, Finland  
Tel. +358-0-420 8077, Fax +358-0-420 8653

Reader Service No. 262

DISTRIBUTORS OF DYNAZYME DNA POLYMERASE: **AUSTRIA:** BIO-TRADE Tel. 1-889 18 19, Fax 1-889 18 19 20, **BENELUX:** TechGen International nv/sa Tel. 02-466 22 50, Fax 02-466 99 04, Eurogentec s.a. Tel. 41-66 01 50, Fax 41-65 51 03, **DENMARK:** MEDINOVA Tel. 31-56 20 00, Fax 31-56 19 42, **FRANCE:** CLONATEC- Département BIOSOFT Tel. 1- 43 42 43 88, Fax 1-43 40 48 86, **GERMANY:** Angewandte Gentechnologie Systeme GmbH Tel. 0 6921-831023, Fax 0 6921-840610, **ITALY:** CELBIO S.r.l. Tel. 02-381 03 171, Fax 02-381 01 465, **NORWAY:** Ing. F. Heidenreich A/S Tel. 02-9292 0411, Fax 02-9292 1150, **PORTUGAL:** Quimigranel, lda. Tel. 1-858 1564, Fax 1-858 37 10, **SPAIN:** LANDERDIAGNOSTICO S.A. Tel. 1-594 08 06, Fax 1-448 71 92, **SWEDEN:** In vitro AB Tel. 08-734 83 00, Fax 08-730 46 40, **SWITZERLAND:** BioConcept Tel. 061-481 47 13, Fax 061-481 71 12, **UNITED KINGDOM:** Flowgen Instruments Ltd. Tel 0795-429737, Fax 0795-471185, **SINGAPORE AND MALAYSIA:** RESEARCH INSTRUMENTS PTE LTD Tel. 65-473 9035, Fax 65-475 8565



NEW

# Positive displacement from Eppendorf,<sup>®</sup> perfect for PCR!

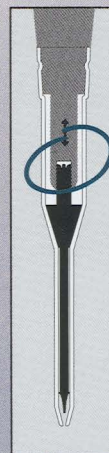
Eppendorf is proud to present the new Model 4830 positive displacement pipetting system to meet your most critical applications.

## Convenient operation

The disposable tips and pistons are pre-assembled in autoclavable racks for easy handling, ready to pick up and go.

And all operations—tip attachment, ejection, volume adjustment, and pipetting—can be performed with one hand.

## Unique tip design



The integrated tip/piston assembly securely attaches to the pipette every time to ensure reliable performance. Positive displacement tips eliminate aerosols and reduce contamination for cleaner, more reproducible sample preparation—especially important for PCR applications.

The new Eppendorf positive displacement pipetting system—convenient to operate, designed for reliability, fully autoclavable, and backed by Brinkmann's 30-day money back guarantee.

Integrated tip/piston assembly connects securely to pipette, ensuring reliable performance.

**eppendorf**

**BRINKMANN** Quality products for research and control.

Call 800-645-3050; in NY, 516-334-7500.  
Brinkmann Instruments, Inc.  
P.O. Box 1019  
Westbury, NY 11590-0207  
(In Canada: 800-263-8715 or 416-675-7911)

BRK-10540-11

SEE US AT ASBMB—Booths #919 & 921

Reader Service No. 263



Introducing . . .

# THE ERICOMP POWERBLOCK SYSTEM: FULL FEATURED, FAST AND COMPACT TEMPERATURE CYCLERS

## Full Featured, Fast and Compact

Ericomp's **PowerBlock™ System**, part of the EasyCycler™ Series, is our newest microprocessor controlled temperature cycler providing accurate temperature control for your DNA amplification experiments. It's ideally suited for the smaller lab setting or for larger labs that need a cost-effective protocol test site. Plus, it incorporates all the innovation and reliability of our TwinBlock™ Systems, while saving valuable workspace and dollars at the same time.

## Dual Experiment Flexibility: Two Thermal Blocks in a Smaller Unit

Economy of scale is something you'll appreciate as soon as PowerBlock is in your lab. Small footprint and light weight make it a compact and transportable "workhorse". You'll be able to incubate up to 30 samples at once, or perform two totally independent experiments simultaneously using up to 15 samples in each experiment.

## The Accuracy of Actual Sample Temperature Monitoring

The PowerBlock employs a fast-response, thin-wire thermocouple for pin-point uniform temperature control. This monitor is placed in an actual microfuge tube and therefore measures actual internal sample temperatures, ensuring optimum reproducibility.

## Faster-Cycling Peltier Heat Pump Operation

Ericomp's state-of-the-art Peltier-effect heat pump design delivers rapid heating and cooling in a temperature range of 4 to 100 degrees C. Ramp speeds average 1.5 degrees/sec. All this is accomplished without moving parts, expensive heavy compressors or robotic mechanisms.

## Eliminating the Need for Oil

Ericomp's powerful feature, the optional Evaporation Control



Device (ECD), makes the EasyCycler™ Series even easier to use. The ECD will eliminate placing and extracting mineral oil overlays used during DNA amplification. Each sample can be extracted with minimal sample loss, and you have the option of using less reagent by running smaller samples.

## Highly Reliable

Thousands of scientists use Ericomp's rugged "workhorse" temperature cyclers because of their proven reliability and durability. Ericomp's exclusive 3-year warranty is standard, and our customer service is unmatched in the industry.

**\$1647<sup>50</sup>  
per block\***



**POWERBLOCK:  
THE NEW ECONOMY OF SCALE**

## .2ml Microcentrifuge Tube or .5ml Microcentrifuge Tube Configuration

The PowerBlock System can be configured with either a .2ml block or a .5ml block, or one block of each in the same unit! No other cycling system can match this kind of sample format diversity.

## Attractive Price

Economy of scale means your budget can handle it. So, if your lab needs an economical, yet accurate and reliable answer to temperature cycling, the new, compact, cost-effective PowerBlock System is the ideal solution. Feature for feature, and dollar for dollar, we invite your comparison.

\*Total unit cost: \$3295.00,  
ECD not included,  
Prices subject to change.

For ordering and  
technical assistance

In the U.S. call  
**1-800-541-8471**

Outside the U.S. call  
**619-457-1888**

**ERICOMP**  
Engineering for your lab's future...today

6044 Cornerstone Court West, Suite E  
San Diego, CA 92121  
(619) 457-1888  
FAX: 619-457-2937



# SPRINGER LABORATORY

C. KESSLER (ed.)

## NONRADIOACTIVE LABELING AND DETECTION OF BIOMOLECULES

This book gathers together all the important nonradioactive labeling techniques for nucleic acids, proteins, glycoproteins and glycolipids, including DIG, Biotin, BrdU, Sulfone, Immunogold, Silver Enhancement, and SNAP as well as standard procedures for optical, chemical, biological, electrochemiluminescent and fluorescent detection. Specific protocols are given for blot, colony/plaque and in-situ hybridization formats, quantitative formats, as well as nonradioactive techniques for nucleic acid sequencing and amplification.

1992/436 pp./58 illus./Hardcover \$89.00  
ISBN 0-387-55482-3

A. ROLFS, I. SCHULLER, U. FINCKH.  
and I. WEBER-ROLFS

## PCR: CLINICAL DIAGNOSTICS AND RESEARCH

Contains complete information about PCR procedures, together with a discussion of contemporary opinions. Protocols that have been tried and tested provide swift support for troubleshooting all sorts of procedural problems — many examples of problem areas found in diagnostically oriented PCR are fully described.

1992/310 pp./95 illus./Hardcover \$59.00  
ISBN 0-387-55440-8



J.H. PETERS and H. BAUMGARTEN (eds.)

## MONOCLONAL ANTIBODIES

*A Practical Guide*

Monoclonal antibodies, in contrast to conventional antisera (polyclonal antibodies), are highly selective and can be produced in unlimited amounts of equal quality. They have evolved into one of the most powerful tools in biomedical research, diagnosis, and even therapy. This laboratory handbook focuses on procedures for hybridoma generation and gives detailed test protocols for the application of monoclonal antibodies.

1992/488 pp./74 illus./Hardcover \$69.00  
ISBN 0-387-50843-0

**CALL 1-800-SPRINGER**

or visit your local  
scientific/medical bookstore.

4/93

REFERENCE #: S160

Reader Service No. 265

## Business Information

**Editorial Office:** Cold Spring Harbor Laboratory Press, 1 Bungtown Road, Cold Spring Harbor, New York 11724-2203. Phone: 516-367-8492; FAX 516-367-8532.

*PCR Methods and Applications* (ISSN 1054-9803) is published quarterly for \$170 (U.S. institutional; \$180 R.O.W.), \$55 (individual making personal payment; \$65 R.O.W. surface, \$20 additional for airmail) by Cold Spring Harbor Laboratory Press, 1 Bungtown Road, Cold Spring Harbor, New York 11724. Second class postage pending is paid at Cold Spring Harbor and additional mailing offices. POSTMASTER: Send address changes to Cold Spring Harbor Laboratory, 10 Skyline Drive, Plainview, New York 11803-9729.

**Subscriptions:** Barbara Terry, Subscription Manager. Personal: U.S. \$55; R.O.W. \$65 surface mail, \$20 additional airlift delivery. Institutional: U.S. \$170; R.O.W. \$180. Orders may be sent to Cold Spring Harbor Laboratory Press, Fulfillment Department, 10 Skyline Drive, Plainview, New York 11803-9729. Telephone: Continental U.S. and Canada 1-800-843-4388; all other locations 516-349-1930. FAX 516-349-1946. Personal subscriptions must be prepaid by personal check, credit card, or money order. Claims for missing issues must be received within 4 months of issue date.

**Advertising:** Nancy Kuhle, Advertising Manager, Cold Spring Harbor Laboratory Press, 1 Bungtown Road, Cold Spring Harbor, New York, 11724-2203. Phone: 516-367-8351; FAX 516-367-8532.

**Copyright information:** Authorization to photocopy items for internal or personal use, or the internal or personal use of specific clients, is granted

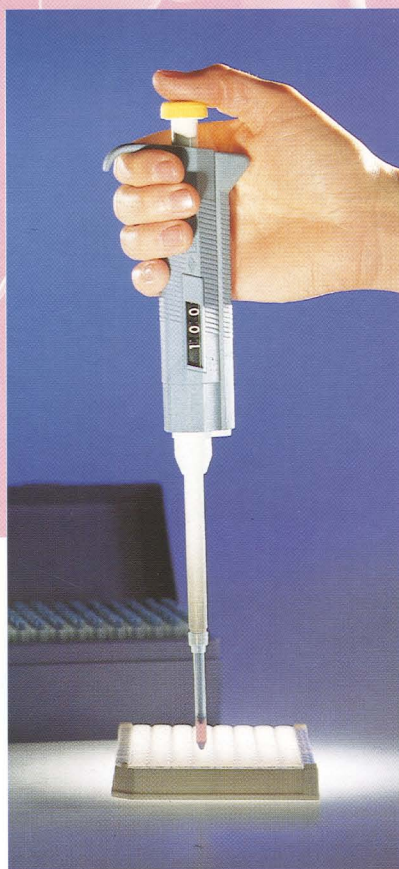
by Cold Spring Harbor Laboratory Press for libraries and other users registered with the Copyright Clearance Center (CCC) Transactional Reporting Service, provided that the base fee of \$3.00 per copy is paid directly to CCC, 21 Congress Street, Salem, Massachusetts 01970 (1054-9803/93 + \$3.00). This consent does not extend to other kinds of copying, such as copying for general distribution for advertising or promotional purposes, for creating new collective works, or for resale.

The methods, products, instructions or ideas contained in or suggested by this journal should be used only by experienced scientific researchers and only in accordance with prudent laboratory safety precautions. Their use by inexperienced or improperly trained individuals could result in serious injury. The publisher does not endorse the claims made by the advertisers in this journal.

Copyright © 1993 by Cold Spring Harbor Laboratory Press



# Finnpipette® ... innovations in liquid handling



## Finnpipette® P.C.R.

Labsystems new Finn timer pipette P.C.R. system is specifically designed to combat the problems of contamination associated with this highly sensitive technique.

The system comprises 2 new positive displacement Finn timer pipettes (0.5-25µl and 20-200µl). Fully autoclavable tips with pre-assembled plungers are available in a 96 tip rack. The design of the microsyringe and tip ensures that there is minimal risk of user-contamination of these parts.



because science needs standards

Labsystems Oy, P.O.Box 8, SF-00881 Helsinki, Finland

Tel. +358-0-75821, Fax +358-0-789 469

Austria: Labsystems Ges.m.b.H., Wien Tel.(222) 4359010

France: Labsystems France S.A., Les Ulis Cedex (Paris) Tel.(1) 69079750

Germany: Labsystems G.m.b.H., Benediktbeuern Tel. (0) 8857951113

Italy: Labsystems S.R.L., Desio(Milano) Tel. (362) 300603

Japan: Labsystems Japan K.K., Tokyo 162 Tel. (3) 52610231 Sales office in Osaka

Spain: Labsystems Espana S.A., Barcelona Tel. (3) 4735018

Sweden: Labsystems AB, Stockholm Tel. (08) 7420250 Sales offices in Gothenburg and Lund

UK: Labsystems (UK) Ltd., Basingstoke Tel. (0256) 844141

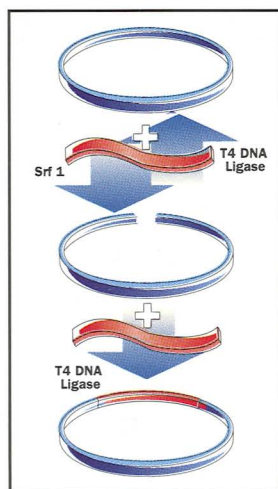
USA: Labsystems Inc.33 Boston Post Road, Marlboro MA 01752 Tel. (508) 481 6800



## The Major Advantages of Stratagene's pCR-Script™ Cloning Kit Over the Competition:

# IT'S SIMPLE AND IT WORKS!

- Uses pBluescript® Vector Derivative
- Uses pBluescript Sequencing Primers
- One Tube Reaction
- Fast - One Hour
- High Efficiency/High Yield
- Low False Positive Rate



Stratagene's pCR-Script™ cloning kit is designed to efficiently clone PCR\* products without requiring special primers or post-PCR treatment. PCR products are simply incubated with the predigested plasmid pCR-Script SK(+) DNA, rATP, T4 DNA ligase and the rare-cleavage blunt end *Srf I* restriction enzyme (1). The method selects for PCR DNA fragment-vector ligations and maintains a high steady-state concentration of the digested vector DNA. After a brief incubation, the mixture is added to competent cells without further treatment.

The pCR-Script SK(+) plasmid is a derivative of the popular pBluescript® II SK(+) vector. It includes the *lac* promoter for gene expression, T3 and T7 RNA polymerase promoters, and an expansive multiple cloning region. And it allows for blue/white color selection, single-stranded rescue and rapid DNA sequencing.

The pCR-Script cloning kit is provided complete with predigested vector, enzymes and competent cells. Please call Stratagene for more information and the distributor nearest you.

Catalog No. 211190



**USA:**  
**Corporate Headquarters**  
Easy Ordering: (800)424-5444  
Telefax: (619)535-0034

**Germany:**  
**Stratagene GmbH**  
Telephone: (06221) 400634  
Telefax: (06221) 400639

**United Kingdom:**  
**Stratagene Ltd.**  
Telephone: (0223) 420955  
Telefax: (0223) 420234

**France:**  
**Stratagene France**  
Telephone: (0590) 7236  
Telefax: (1) 44281900

**Switzerland:**  
**Stratagene GmbH**  
Telephone: (01) 3641106  
Telefax: (01) 3657707

1. Bauer, J., et al. (1992) *Stratagies* 5:2-64

\*The polymerase chain reaction (PCR) process is covered by patents in the United States owned by Hoffmann-La Roche. Use of the PCR process requires a license.



# Research Genetics

2130 Memorial Parkway SW  
Huntsville, AL 35801  
USA

FAX 205-536-9016

U.S. & Canada 1-800-533-4363

U.K. 0-800-89-1393

## More Products for PCR

**RediLoad:** a reagent that can be added to PCR<sup>†</sup> reaction mixtures that allows for direct loading onto agarose gels after amplification.

Cat. No. 750026

**Red Barren:** prepare amplifiable genomic DNA from large volumes of whole blood in less than one hour without the use of phenol.

Cat. No. 750027

**Gene Releaser:** isolate DNA from whole cells without prior purification PLUS get improved amplification yield and specificity.

Cat. No. 91001

**DEPC H<sub>2</sub>O:** DNase/RNase free H<sub>2</sub>O packaged in smaller volumes to accommodate the PCR<sup>†</sup> user.

Cat. No. 750024

## Custom Primers and Probes

Research Genetics offers the full range of custom labeling and modifications, including but not limited to:

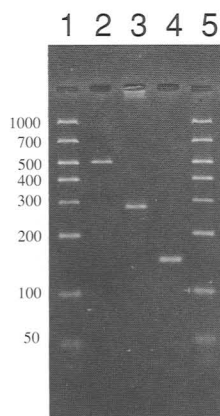
Phosphorothioates	AlkPhos™
Rhodamine	5' - Thiol
Fluorescein	Biotin
Digoxigenin*	Inosine
Texas red	BrdU
5' - Phosphorylation	Brigati tail

Please inquire about your specialized oligonucleotide needs.

Free custom design of primers and probes.

## GelMarker™

The molecular weight standard specifically designed to accurately quantitate yields and determine the size of PCR<sup>†</sup> products separated by gel electrophoresis



5 µl of GelMarker™ in lanes 1 and 5. 40 ng of a 500 bp, 80 ng of a 296 bp and 120 ng of a 138 bp PCR product in lanes 2, 3 and 4 respectively.

### Distinctive features of GelMarker™:

Ideal range of coverage for PCR products

Easy estimation of yield - each band contains 50 ng of DNA

No preheating required

Biotin and Digoxigenin labeled GelMarker™ also available

Seven bands spaced to easily plot in one log cycle for more accurate size determination

50 applications      \$77<sup>00</sup>      Cat. No. 701006.050

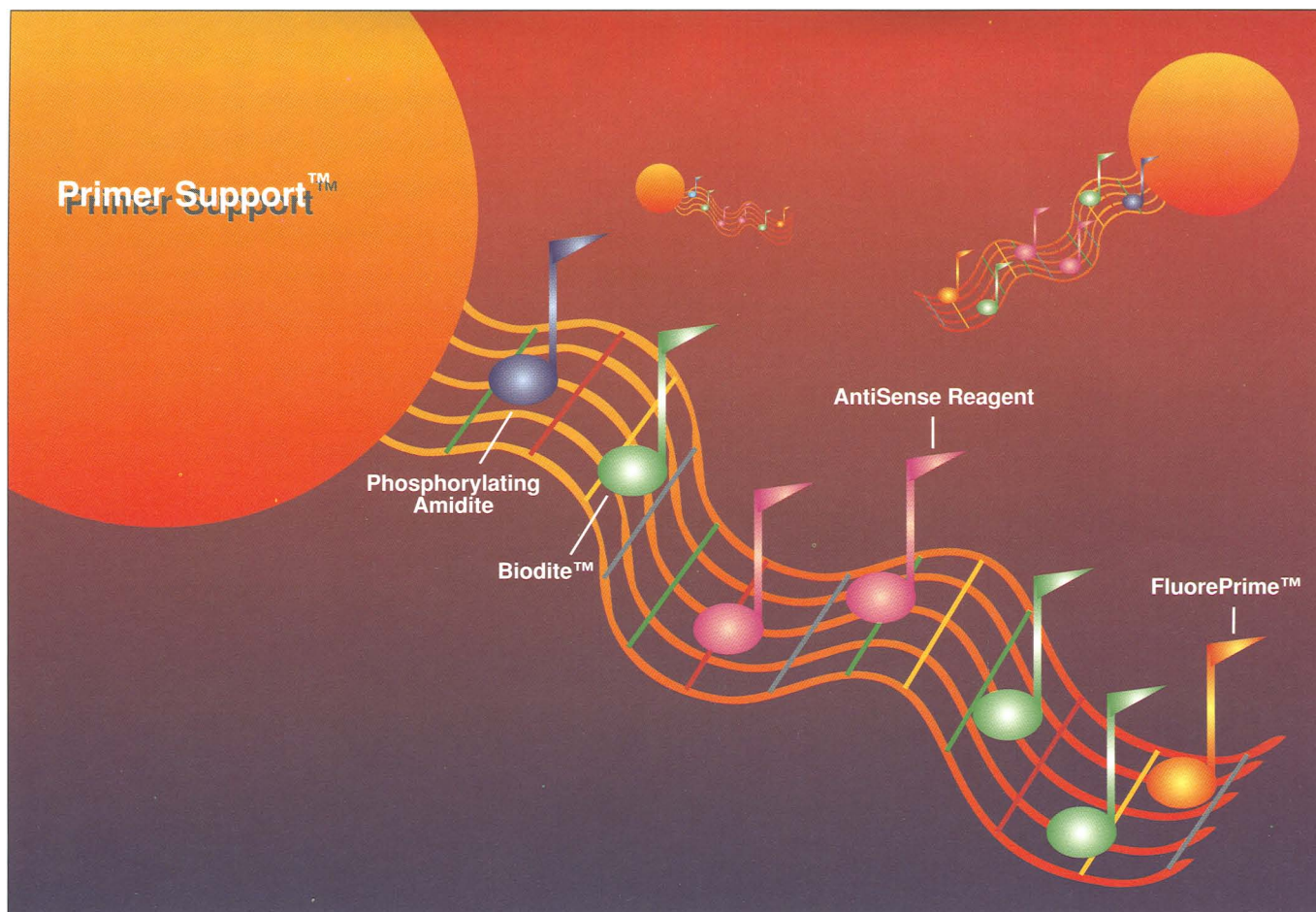
100 applications      \$137<sup>00</sup>      Cat. No. 701006.100

Alk Phos™ and GelMarker™ are trademarks of Research Genetics

<sup>†</sup>PCR is covered by U.S. patents issued to Cetus Corp. and is licensed by Research Genetics

\*The use of Digoxigenin in the labeling of oligonucleotides is licensed to Research Genetics from Boehringer Mannheim





## Discover the harmony in your DNA synthesis

DNA synthesis simply flows along when you, your reagents and your instruments work in harmony.

With a complete range of quality DNA synthesis chemicals and a choice of Gene Assembler® DNA synthesizers, Pharmacia has all you need to complete your work with a flourish.

### ● Primer Support™

Primer Support is a new range of polystyrene 50 - 70 µm diameter supports optimized for the synthesis of oligonucleotides up to 50 bases in length. The large surface area gives high yields of pure product, regardless of scale. Primer Support runs on both gas and pump-driven synthesizers.

### ♪ Phosphorylating Amidite

Phosphorylating Amidite introduces a phosphate at the 5' or 3'-end. It can also introduce a modified nucleotide at the 3' end.

### ♪ AntiSense Reagent

AntiSense Reagent\* introduces sulphur into the inter-nucleotide phosphate linkage, imparting nuclease resistance. It is much faster and safer than alternative methods.

### ♪ Biodite™

Biodite is a biotin amidite for direct coupling of biotin to any position in a oligonucleotide. Biotin-labelled oligos are useful for non-radioactive DNA detection and for solid-phase sequencing

### ♪ FluorePrime™

FluorePrime, the market-leading fluorescein amidite, adds a fluorescein group to an oligonucleotide in a single step. It reduces the time for labelled primer production to less than five hours. The primer produced is suitable for *in-situ* hybridization and DNA sequencing on A.L.F.™ DNA Sequencer.

### Gene Assembler

Now we have two new synthesizers for quality oligonucleotide production. *Gene Assembler Special* is the flexible choice for expanded DNA chemistry applications. It features new antisense technology and 8 amidite ports for easy synthesis of DNA, RNA or DNA-RNA hybrids. *Gene Assembler 4 Primers* is a low-cost solution to high-volume needs. With four column capacity, it synthesizes eight 20mers in 24 hrs.



*Conduct your DNA synthesis with a flourish. Ask for further information.*

Reader Service No. 269

\* Developed by Dr. S. Beaucage, FDA.

For further information, call 1-800-526-3593 in the U.S., or 1-800-463-5800 in Canada.

Come see us at booth #1233 at ASM, and booths #1020-1123 at ASBMB

 **Pharmacia**



# ORDER FORM

For Fastest Service—  
Call:

1-800-843-4388

—Continental U.S.  
and Canada

516-349-1930

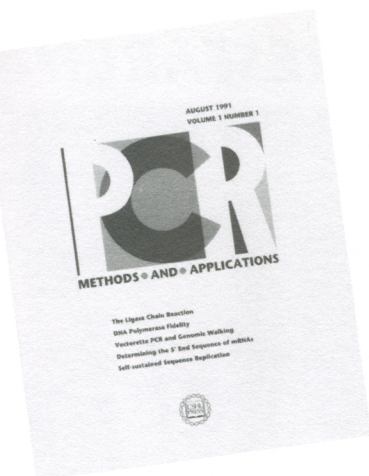
—All other locations

FAX:

516-349-1946



**COLD SPRING HARBOR  
LABORATORY PRESS**  
Plainview, NY 11803



METHODS AND APPLICATIONS

## VOLUME 3, 1993/94, BIMONTHLY (Six issues beginning August, 1993)

- ☐ Individual price (U.S.) - \$82.50
- ☐ Individual price (R.O.W. Surface Delivery) - \$97.50
- ☐ Individual price (R.O.W. Airlift Delivery) - \$127.50
- ☐ Institutional price (U.S.) - \$255
- ☐ Institutional price (R.O.W. Surface Delivery) - \$270
- ☐ Institutional price (R.O.W. Airlift Delivery) - \$300
- ☐ Please send me a sample issue.

Personal orders must be prepaid by personal check, credit card or money order.

☐ Check or money order enclosed (U.S. Bank Checks Only)

Charge to: ☐ MASTERCARD ☐ VISA ☐ AMERICAN EXPRESS

ACCOUNT NO. \_\_\_\_\_ EXP. \_\_\_\_\_

SIGNATURE \_\_\_\_\_ TEL. \_\_\_\_\_

NAME \_\_\_\_\_

ADDRESS \_\_\_\_\_

CITY/STATE/ZIP \_\_\_\_\_

COUNTRY \_\_\_\_\_

ISSN 1054-9803

All prices subject to change without notice.

**Orders for India:** Panima Educational Book Agency, C-8, Safdarjang Development Area, Shopping Centre, Hauz Khas, New Delhi-110016 India. **Orders for Japan:** Maruzen Company LTD., 3-10, Nihonbashi 2-Chome, Chou-ku, Tokyo, 103 Japan. **Orders for Hong Kong, Korea, Malaysia, Singapore, Taiwan, and Thailand:** Info Access & Distribution Pte. Ltd., 14 Conway Grove, Singapore 1955.

## PCR METHODS AND APPLICATIONS



METHODS AND APPLICATIONS

## VOLUME 3, 1993/94, BIMONTHLY (Six issues beginning August, 1993)

- ☐ Individual price (U.S.) - \$82.50
- ☐ Individual price (R.O.W. Surface Delivery) - \$97.50
- ☐ Individual price (R.O.W. Airlift Delivery) - \$127.50
- ☐ Institutional price (U.S.) - \$255
- ☐ Institutional price (R.O.W. Surface Delivery) - \$270
- ☐ Institutional price (R.O.W. Airlift Delivery) - \$300
- ☐ Please send me a sample issue.

Personal orders must be prepaid by personal check, credit card or money order.

☐ Check or money order enclosed (U.S. Bank Checks Only)

Charge to: ☐ MASTERCARD ☐ VISA ☐ AMERICAN EXPRESS

ACCOUNT NO. \_\_\_\_\_ EXP. \_\_\_\_\_

SIGNATURE \_\_\_\_\_ TEL. \_\_\_\_\_

NAME \_\_\_\_\_

ADDRESS \_\_\_\_\_

CITY/STATE/ZIP \_\_\_\_\_

COUNTRY \_\_\_\_\_

ISSN 1054-9803

All prices subject to change without notice.

**Orders for India:** Panima Educational Book Agency, C-8, Safdarjang Development Area, Shopping Centre, Hauz Khas, New Delhi-110016 India. **Orders for Japan:** Maruzen Company LTD., 3-10, Nihonbashi 2-Chome, Chou-ku, Tokyo, 103 Japan. **Orders for Hong Kong, Korea, Malaysia, Singapore, Taiwan, and Thailand:** Info Access & Distribution Pte. Ltd., 14 Conway Grove, Singapore 1955.

## PCR METHODS AND APPLICATIONS



METHODS AND APPLICATIONS

## VOLUME 3, 1993/94, BIMONTHLY (Six issues beginning August, 1993)

Please pass this order form to your librarian  
so that your colleagues can see PCR METHODS  
AND APPLICATIONS in your library.

- ☐ Institutional price (U.S.) - \$255
- ☐ Institutional price (R.O.W. Surface Delivery) - \$270
- ☐ Institutional price (R.O.W. Airlift Delivery) - \$300
- ☐ Please send me a sample issue.

PURCHASE ORDER NO. \_\_\_\_\_

NAME \_\_\_\_\_

ORGANIZATION \_\_\_\_\_

ADDRESS \_\_\_\_\_

CITY/STATE/ZIP \_\_\_\_\_

COUNTRY \_\_\_\_\_

TEL: Continental U.S. and Canada: 1-800-843-4388 ISSN 1054-9803

All other locations: 516-349-1930 FAX: 516-349-1946

All prices subject to change without notice.

**Orders for India:** Panima Educational Book Agency, C-8, Safdarjang Development Area, Shopping Centre, Hauz Khas, New Delhi-110016 India. **Orders for Japan:** Maruzen Company LTD., 3-10, Nihonbashi 2-Chome, Chou-ku, Tokyo, 103 Japan. **Orders for Hong Kong, Korea, Malaysia, Singapore, Taiwan, and Thailand:** Info Access & Distribution Pte. Ltd., 14 Conway Grove, Singapore 1955.

## PCR METHODS AND APPLICATIONS

Please check title(s) that most  
closely describe(s) your position:

- ☐ (1) Professor
- ☐ (2) Graduate student
- ☐ (3) Postdoctoral scientist
- ☐ (4) Lab director
- ☐ (5) Lab technician
- ☐ (6) Medical student
- ☐ (7) Undergraduate student
- ☐ (8) Librarian
- ☐ (9) Publisher

Please check your employment  
category:

- ☐ (1) University/college
- ☐ (2) Research institute/foundation
- ☐ (3) Hospital
- ☐ (4) Medical school
- ☐ (5) Industry
- ☐ (6) Government
- ☐ (7) Library/information center

Please check your primary  
field of interest:

- ☐ (1) Biochemistry
- ☐ (2) Cell biology
- ☐ (3) Developmental biology
- ☐ (4) Epidemiology
- ☐ (5) Genetics
- ☐ (6) Immunology
- ☐ (7) Microbiology
- ☐ (8) Molecular biology
- ☐ (9) Neurobiology
- ☐ (10) Plant biology
- ☐ (11) Pharmacology
- ☐ (12) Virology
- ☐ (13) Oncology
- ☐ (14) Other

Please check title(s) that most  
closely describe(s) your position:

- ☐ (1) Professor
- ☐ (2) Graduate student
- ☐ (3) Postdoctoral scientist
- ☐ (4) Lab director
- ☐ (5) Lab technician
- ☐ (6) Medical student
- ☐ (7) Undergraduate student
- ☐ (8) Librarian
- ☐ (9) Publisher

Please check your employment  
category:

- ☐ (1) University/college
- ☐ (2) Research institute/foundation
- ☐ (3) Hospital
- ☐ (4) Medical school
- ☐ (5) Industry
- ☐ (6) Government
- ☐ (7) Library/information center

Please check your primary  
field of interest:

- ☐ (1) Biochemistry
- ☐ (2) Cell biology
- ☐ (3) Developmental biology
- ☐ (4) Epidemiology
- ☐ (5) Genetics
- ☐ (6) Immunology
- ☐ (7) Microbiology
- ☐ (8) Molecular biology
- ☐ (9) Neurobiology
- ☐ (10) Plant biology
- ☐ (11) Pharmacology
- ☐ (12) Virology
- ☐ (13) Oncology
- ☐ (14) Other

Please check title(s) that most  
closely describe(s) your position:

- ☐ (1) Professor
- ☐ (2) Graduate student
- ☐ (3) Postdoctoral scientist
- ☐ (4) Lab director
- ☐ (5) Lab technician
- ☐ (6) Medical student
- ☐ (7) Undergraduate student
- ☐ (8) Librarian
- ☐ (9) Publisher

Please check your employment  
category:

- ☐ (1) University/college
- ☐ (2) Research institute/foundation
- ☐ (3) Hospital
- ☐ (4) Medical school
- ☐ (5) Industry
- ☐ (6) Government
- ☐ (7) Library/information center

Please check your primary  
field of interest:

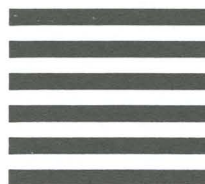
- ☐ (1) Biochemistry
- ☐ (2) Cell biology
- ☐ (3) Developmental biology
- ☐ (4) Epidemiology
- ☐ (5) Genetics
- ☐ (6) Immunology
- ☐ (7) Microbiology
- ☐ (8) Molecular biology
- ☐ (9) Neurobiology
- ☐ (10) Plant biology
- ☐ (11) Pharmacology
- ☐ (12) Virology
- ☐ (13) Oncology
- ☐ (14) Other



**BUSINESS REPLY MAIL**

FIRST CLASS MAIL PERMIT NO. 150 HICKSVILLE, NY

POSTAGE WILL BE PAID BY ADDRESSEE

COLD SPRING HARBOR LABORATORY PRESS  
10 SKYLINE DRIVE  
PLAINVIEW, NY 11803-2500NO POSTAGE  
NECESSARY  
IF MAILED  
IN THE  
UNITED STATES**BUSINESS REPLY MAIL**

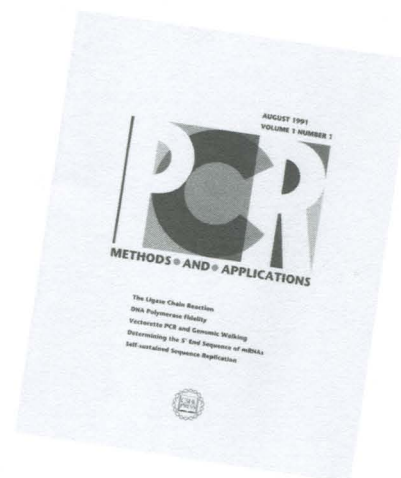
FIRST CLASS MAIL PERMIT NO. 150 HICKSVILLE, NY

POSTAGE WILL BE PAID BY ADDRESSEE

COLD SPRING HARBOR LABORATORY PRESS  
10 SKYLINE DRIVE  
PLAINVIEW, NY 11803-2500NO POSTAGE  
NECESSARY  
IF MAILED  
IN THE  
UNITED STATES**BUSINESS REPLY MAIL**

FIRST CLASS MAIL PERMIT NO. 150 HICKSVILLE, NY

POSTAGE WILL BE PAID BY ADDRESSEE

COLD SPRING HARBOR LABORATORY PRESS  
10 SKYLINE DRIVE  
PLAINVIEW, NY 11803-2500NO POSTAGE  
NECESSARY  
IF MAILED  
IN THE  
UNITED STATES**RESEARCH  
METHODS  
REVIEWS  
COMMENT****For fastest service, call:****1-800-843-4388**Continental U.S.  
and Canada**516-349-1930**

All other locations

**FAX: 516-349-1946****COLD SPRING HARBOR  
LABORATORY PRESS**



COLD SPRING HARBOR



LABORATORY PRESS

## READER SERVICE CARD

Please print clearly:

NAME																			
POSITION										TEL.									
ORGANIZATION																			
ADDRESS																			
CITY										STATE					ZIP CODE				
POSTAL CODE										COUNTRY									

Are you a subscriber?  
YES ☐ NO ☐  
Is this a pass-along copy?  
YES ☐ NO ☐  
For further information  
WRITE assigned key  
numbers in boxes below


Offer valid for 6 mos. from issue date.  
For further information about advertisements and new products, write the number(s) corresponding to the number at the base of the item(s) of interest. Enter the issue date, your name and address, and return this card.

Issue date:       1993

## PCR METHODS AND APPLICATIONS

Please check title(s) that most closely describe(s) your position:

- ☐ (1) Professor
- ☐ (2) Graduate student
- ☐ (3) Postdoctoral scientist
- ☐ (4) Lab director
- ☐ (5) Lab technician
- ☐ (6) Medical student
- ☐ (7) Undergraduate student
- ☐ (8) Librarian
- ☐ (9) Publisher

Please check your employment category:

- ☐ (1) University/college
- ☐ (2) Research institute/foundation
- ☐ (3) Hospital
- ☐ (4) Medical school
- ☐ (5) Industry
- ☐ (6) Government
- ☐ (7) Library/information center

Please check your primary field of interest:

- ☐ (1) Biochemistry
- ☐ (2) Cell biology
- ☐ (3) Developmental biology
- ☐ (4) Epidemiology
- ☐ (5) Genetics
- ☐ (6) Immunology
- ☐ (7) Microbiology
- ☐ (8) Molecular biology
- ☐ (9) Neurobiology
- ☐ (10) Plant biology
- ☐ (11) Pharmacology
- ☐ (12) Virology
- ☐ (13) Oncology
- ☐ (14) Other

## READER SERVICE CARD

Please print clearly:

NAME																			
POSITION										TEL.									
ORGANIZATION																			
ADDRESS																			
CITY										STATE					ZIP CODE				
POSTAL CODE										COUNTRY									

Are you a subscriber?  
YES ☐ NO ☐  
Is this a pass-along copy?  
YES ☐ NO ☐  
For further information  
WRITE assigned key  
numbers in boxes below


Offer valid for 6 mos. from issue date.  
For further information about advertisements and new products, write the number(s) corresponding to the number at the base of the item(s) of interest. Enter the issue date, your name and address, and return this card.

Issue date:       1993

## PCR METHODS AND APPLICATIONS

Please check title(s) that most closely describe(s) your position:

- ☐ (1) Professor
- ☐ (2) Graduate student
- ☐ (3) Postdoctoral scientist
- ☐ (4) Lab director
- ☐ (5) Lab technician
- ☐ (6) Medical student
- ☐ (7) Undergraduate student
- ☐ (8) Librarian
- ☐ (9) Publisher

Please check your employment category:

- ☐ (1) University/college
- ☐ (2) Research institute/foundation
- ☐ (3) Hospital
- ☐ (4) Medical school
- ☐ (5) Industry
- ☐ (6) Government
- ☐ (7) Library/information center

Please check your primary field of interest:

- ☐ (1) Biochemistry
- ☐ (2) Cell biology
- ☐ (3) Developmental biology
- ☐ (4) Epidemiology
- ☐ (5) Genetics
- ☐ (6) Immunology
- ☐ (7) Microbiology
- ☐ (8) Molecular biology
- ☐ (9) Neurobiology
- ☐ (10) Plant biology
- ☐ (11) Pharmacology
- ☐ (12) Virology
- ☐ (13) Oncology
- ☐ (14) Other

## READER SERVICE CARD

Please print clearly:

NAME																			
POSITION										TEL.									
ORGANIZATION																			
ADDRESS																			
CITY										STATE					ZIP CODE				
POSTAL CODE										COUNTRY									

Are you a subscriber?  
YES ☐ NO ☐  
Is this a pass-along copy?  
YES ☐ NO ☐  
For further information  
WRITE assigned key  
numbers in boxes below


Offer valid for 6 mos. from issue date.  
For further information about advertisements and new products, write the number(s) corresponding to the number at the base of the item(s) of interest. Enter the issue date, your name and address, and return this card.

Issue date:       1993

## PCR METHODS AND APPLICATIONS

Please check title(s) that most closely describe(s) your position:

- ☐ (1) Professor
- ☐ (2) Graduate student
- ☐ (3) Postdoctoral scientist
- ☐ (4) Lab director
- ☐ (5) Lab technician
- ☐ (6) Medical student
- ☐ (7) Undergraduate student
- ☐ (8) Librarian
- ☐ (9) Publisher

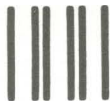
Please check your employment category:

- ☐ (1) University/college
- ☐ (2) Research institute/foundation
- ☐ (3) Hospital
- ☐ (4) Medical school
- ☐ (5) Industry
- ☐ (6) Government
- ☐ (7) Library/information center

Please check your primary field of interest:

- ☐ (1) Biochemistry
- ☐ (2) Cell biology
- ☐ (3) Developmental biology
- ☐ (4) Epidemiology
- ☐ (5) Genetics
- ☐ (6) Immunology
- ☐ (7) Microbiology
- ☐ (8) Molecular biology
- ☐ (9) Neurobiology
- ☐ (10) Plant biology
- ☐ (11) Pharmacology
- ☐ (12) Virology
- ☐ (13) Oncology
- ☐ (14) Other





NO POSTAGE  
NECESSARY  
IF MAILED  
IN THE  
UNITED STATES

## BUSINESS REPLY MAIL

FIRST CLASS PERMIT #5 COLD SPRING HARBOR, N.Y.

POSTAGE WILL BE PAID BY ADDRESSEE

Advertising Manager  
Library Building  
COLD SPRING HARBOR LABORATORY PRESS  
PO Box 100  
Cold Spring Harbor, NY 11724-2300



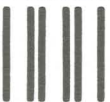
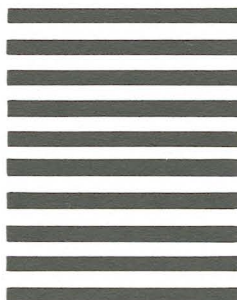
NO POSTAGE  
NECESSARY  
IF MAILED  
IN THE  
UNITED STATES

## BUSINESS REPLY MAIL

FIRST CLASS PERMIT #5 COLD SPRING HARBOR, N.Y.

POSTAGE WILL BE PAID BY ADDRESSEE

Advertising Manager  
Library Building  
COLD SPRING HARBOR LABORATORY PRESS  
PO Box 100  
Cold Spring Harbor, NY 11724-2300



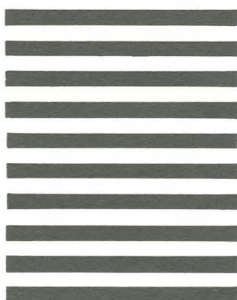
NO POSTAGE  
NECESSARY  
IF MAILED  
IN THE  
UNITED STATES

## BUSINESS REPLY MAIL

FIRST CLASS PERMIT #5 COLD SPRING HARBOR, N.Y.

POSTAGE WILL BE PAID BY ADDRESSEE

Advertising Manager  
Library Building  
COLD SPRING HARBOR LABORATORY PRESS  
PO Box 100  
Cold Spring Harbor, NY 11724-2300



**COLD SPRING HARBOR**



**LABORATORY PRESS**







## ISS Programmable Oven I



- ❖ Proven reliability for thermocycling.
- ❖ Accepts tubes or microtiter plates.
- ❖ *In-situ* amplification reference available.

## ssDNA/RNA Analysis

- ❖ Precast TBE-Urea gels are ideal for oligonucleotide and primer extension controls.
- ❖ Denaturing separation of nucleic acids in the 10 to 300 nucleotide range.
- ❖ Choice of three acrylamide concentrations.
- ❖ Available in both MiniGel and MiniPlus gel sizes.

TBE-UREA SEPRAGELS

## Integrated Separation Systems

enprotech

**800-433-6433**

21 Strathmore Road • Natick, MA 01760

*Come and see us at the ASM General Meeting, May 17-19, 1993. Atlanta Georgia.  
Booth Numbers 1451 & 1453*

Reader Service No. 270

**When purity and  
accuracy can't  
be compromised...**

Scientists turn to Keystone for a  
complete range of custom lab services:

Oligonucleotide synthesis  
\$3.50 / Base

Custom biotin and digoxigenin  
labeling starting at \$100.00 plus  
\$3.50 / Base

FISH (Fluorescent *in situ* hybridization)  
probes starting at \$350.00

Custom Antisense / S-Oligos,  
HPLC purified starting at \$200.00

1-800-788-4362  
1-800-786-4362 Fax

**KEYSTONE**  
Laboratories, Inc.

Reader Service No. 271

**DO YOU NEED  
REPRINTS ?**

Reprints of articles  
published in  
*PCR Methods and  
Applications*  
are available in black &  
white and color.

Please call: Nancy Kuhle

Tel: 516/367/8351  
Fax: 516/367/8532



# PCR METHODS AND APPLICATIONS ANNOUNCES BIMONTHLY PUBLICATION!



Hailed as "the bible" in a recent *Nature* review, *PCR Methods and Applications* has been accepted enthusiastically as a top quality, independent, peer-reviewed source of timely research information on PCR and other amplification techniques. To make *PCR Methods and Applications* more responsive to the needs of the interdisciplinary research community this journal serves, and to accommodate the increasing number of high-quality research papers being submitted to the journal, *PCR Methods and*

*Applications* is now moving to bimonthly publication. Volume 3 will begin in August 1993, and will contain six bimonthly issues, taking it through June 1994.

The journal will continue to offer a mix of commissioned review articles and submitted primary research papers and technical tips describing advances in PCR and other amplification techniques on such topics as:

• random PCR • genome walking using panhandle PCR • subtracted cDNA library construction with asymmetric PCR • MAIDS virus detection • ligation-mediated analysis of chromatin structure • site-directed mutagenesis using uracil DNA glycosylase • quantitative PCR • automated techniques • sequencing techniques • preferential PCR amplification of alleles • ligation chain reaction • PCR-SSCP

Researchers developing PCR-based sequencing techniques as well as those developing clinically oriented amplification applications are especially encouraged to submit work to the journal.

In addition, a new feature within selected issues of Volume 3 will be PCR manual supplements including protocols and extensive troubleshooting advice and referencing.

With these changes, *PCR Methods and Applications* will offer even faster publication times for authors and more timely and useful information for subscribers.

**Volume 3, 1993/1994  
containing 6 bimonthly issues  
(beginning August 1993)**

Individual Price (U.S.) \$82.50

Individual Price (R.O.W.  
surface delivery) \$97.50

Individual Price (R.O.W.  
airlift delivery) \$127.50

Institutional Price (U.S.) \$255.00

Institutional Price (R.O.W.  
surface delivery) \$270.00

Institutional Price (R.O.W.  
airlift delivery) \$300.00

**Manuscripts may be submitted to:**

PCR Methods and Applications  
Cold Spring Harbor Laboratory Press  
1 Bungtown Road  
Cold Spring Harbor, New York 11724

## ASSOCIATE EDITORS

**David Bentley**  
Guy's Hospital, London  
**Richard Gibbs**  
Baylor College of Medicine  
**Eric Green**  
Washington University  
School of Medicine  
**Richard Myers**  
University of California, San Francisco

## EDITORIAL BOARD

**Rakesh Anand**  
ICI Pharmaceuticals  
**Johannes Bos**  
University of Utrecht  
**David Botstein**  
Stanford University School of Medicine  
**Jeff Chamberlain**  
University of Michigan Medical School  
**Nicholas Dracopoli**  
Massachusetts Institute of Technology  
**Joseph Ecker**  
University of Pennsylvania  
**Henry Erlich**  
Roche Molecular Systems  
**Kenshi Hayashi**  
National Cancer Research  
Institute, Tokyo  
**Bernhard Horsthemke**  
University of Essen  
**Pieter de Jong**  
Lawrence Livermore National  
Laboratory  
**David Kemp**  
Menzies School of Health Research  
**Kenneth Kidd**  
Yale University School of Medicine  
**Ulf Landegren**  
University of Uppsala Medical Center  
**Eric Lander**  
Whitehead Institute for  
Medical Research  
**Hans Lehrach**  
Imperial Cancer Research Fund  
**Kary Mullis**  
La Jolla, California  
**David Nelson**  
Baylor College of Medicine  
**Debbie Nickerson**  
University of Washington  
School of Medicine  
**Svante Pääbo**  
University of Munich  
**Steve Sommer**  
Mayo Foundation  
**Eric Spitzer**  
SUNY-Stony Brook  
**Lap-Chee Tsui**  
Hospital for Sick Children, Toronto  
**James Weber**  
Marshfield Medical Research Foundation  
**Steven Wolinsky**  
Northwestern University Medical School  
**Mark Zoller**  
Ariad Pharmaceuticals

**EDITOR**  
**Judy Cuddihy**  
Cold Spring Harbor Laboratory Press



**To order, or request additional information:**

Call: 1-800-843-4388 (Continental US and Canada) 516-349-1930 (All other locations)

FAX: 516-349-1946

Write: CSHL Press, 10 Skyline Drive, Plainview, N.Y. 11803