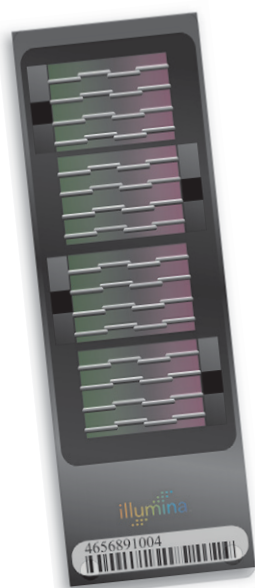


Omni – \Om"ni-\ [L. omnis all.]
Omni – /Om"ni-/ [Γ· omni? 9||.]

Denoting all, everything, universal;
as in the HumanOmni1-Quad.



Have it all without compromise:
the best content at an affordable price.

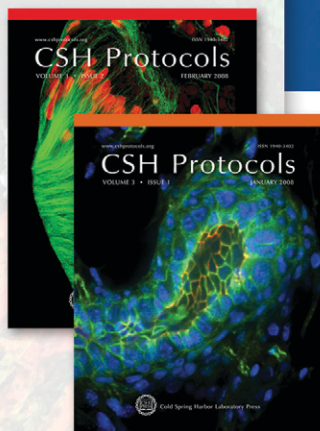
- More than one million markers per sample for superior coverage of tag SNPs, genes, and indels
- The first microarray with content from the 1,000 Genomes Project
- Genome-wide coverage of common and rare CNVs
- More than 30,000 coding and non-synonymous SNPs

Learn how you can discover more disease associations today at:

www.illumina.com/DNAGR



Cold Spring Harbor Protocols



- The online source of trusted techniques in molecular and cell biology
- Contains cutting-edge and classic protocols presented step-by-step with cautions and troubleshooting
- Frequently updated and annotated
- Interactive, customizable, and fully searchable

Subject Coverage

Antibodies
Bioinformatics/Genomics
Cell Biology
Chromatography
Computational Biology
DNA Delivery/Gene Transfer
Electrophoresis
Emerging Model Organisms
Genetics
High-Throughput Analysis
Imaging/Microscopy
Immunology
Laboratory Organisms
Molecular Biology
Neuroscience
Newly Added Protocols
Plant Biology
Polymerase Chain Reaction (PCR)
Proteins and Proteomics
RNA Interference (RNAi)/siRNA
Stem Cells
Transgenic Technology



Online. Authoritative. Indispensable.

Cold Spring Harbor Laboratory is renowned for its teaching of biomedical research techniques. For decades, participants in its celebrated, hands-on courses and users of its laboratory manuals have gained access to the most authoritative and reliable methods in molecular and cellular biology. Now that access has moved online.

Visit *Cold Spring Harbor Protocols* today and discover a rich, interactive source of new and classic research techniques. The site is fully searchable, with many tools that can be customized by users, including topic-based alerting and personal folders. Through a web-based editorial process, users also have the opportunity to add refereed comments to each protocol. Links in the online protocols offer additional resources and step-by-step instructions print out in a convenient form, complete with materials, cautions, and troubleshooting advice. Each protocol is citable, presented, and edited in the style that has made *Molecular Cloning*, *Antibodies*, *Cells*, and many other Cold Spring Harbor manuals essential to the work of scientists worldwide. The current collection of more than 1000 protocols is continuously expanded, updated, and annotated by the originators and users of the techniques.

NEW to CSH Protocols:



Emerging Model Organisms, a full-fledged guide to the use of new model systems in the laboratory, covering husbandry, genetics, genomics and basic protocols.

CSH Protocols is created by Cold Spring Harbor Laboratory Press in association with HighWire Press of Stanford University.

Executive Editor: Dr. David Crotty • ISSN 1559-6095 / online, monthly
Available exclusively via institutional site license

Request a Free Trial for Your Institution

www.cshprotocols.org

The First Choice in Protocols.

For pricing information or to request a free trial, contact us at:

Phone: 1-800-843-4388 (Continental US and Canada) or 516-422-4100 (all other locations)

Fax: 516-422-4097 E-mail: cshpress@cshl.edu Website: www.cshlpress.com

Write: Cold Spring Harbor Laboratory Press, 500 Sunnyside Blvd., Woodbury, NY 11797-2924



Highest-quality
data

Confidence
in my results

Best fit for my
workflow

Adaptable

Affordable



Best-in-Class, Real-Time PCR Solutions. Specific for my research.

Only Applied Biosystems delivers the highest-quality, best-in-class workflow solutions for all of your real-time PCR applications. With built-in flexibility, our systems adapt to meet your specific research needs. With 25 years of proven quality, we have the experience you need to bring superior data into your lab. When you want a real-time portfolio that can take your research to the next level, talk to the experts.



As Flexible as You Want to Be.

AB Applied
Biosystems

The highest-quality, real-time PCR solutions optimized just for you at www.appliedbiosystems.com/realsystems

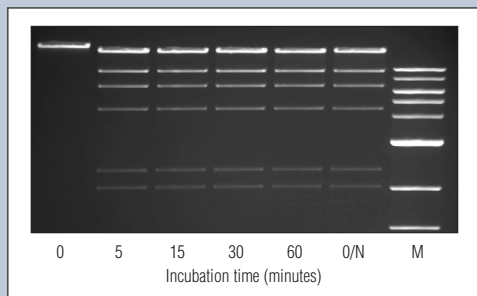
For Research Use Only. Not for use in diagnostic procedures. © 2009 Life Technologies Corporation. All rights reserved. The trademarks mentioned herein are the property of Life Technologies Corporation or their respective owners.

EXCEPTIONAL QUALITY

Restriction Enzymes from New England Biolabs

With 35 years of experience in enzyme technology, New England Biolabs leads the industry in quality, selection and innovation for restriction enzymes. Our expertise in purification coupled with a reliance on recombinant technology results in highly pure enzymes suitable for even the most sensitive applications. Additionally, stringent quality controls ensure that our enzymes deliver optimal performance. For quality you can count on, make NEB restriction enzymes your first choice.

Power and purity of NEB Restriction Enzymes



Recombinant *HindIII* is powerful enough to digest 1 µg of DNA in 5 minutes, but can also be used in overnight digests with no indication of nuclease contamination. Marker (M) is the 1 kb DNA Ladder (NEB #N3232).

RII Choose recombinant enzymes for a higher quality product with lot-to-lot consistency

Advantages:

- **Selection** – More specificities than any other supplier
- **Convenience** – Optimal activity for over 160 enzymes in a single buffer **NEB4**
- **Quality** – State-of-the-art production and stringent QCs
- **Innovation** – HF enzymes engineered for reduced star activity
- **Performance** – Guaranteed

 **NEW ENGLAND**
BioLabs[®] Inc.
enabling technologies in the life sciences

CLONING & MAPPING

DNA AMPLIFICATION
& PCR

RNA ANALYSIS

PROTEIN EXPRESSION &
ANALYSIS

GENE EXPRESSION
& CELLULAR ANALYSIS

www.neb.com

Idaho Technology
Continuing to raise the bar!



LightScanner® 32 System

Introducing the LightScanner 32, the fastest real-time PCR technology combined with the most accurate Hi-Res Melting® system.

As the pioneers of both rapid real-time PCR and Hi-Res Melting, Idaho Technology is the only company that offers a system capable of superior performance for both applications at an affordable price.

The LightScanner 32 offers a versatile application suite without sacrificing performance.

- Rapidly generate high quality gene expression data.
- Accurately discriminate even the most subtle DNA mutations.
- Genotype samples with greater specificity than TaqMan® genotyping at a fraction of the cost.



LightScanner® 32
with run and analysis software

Proven technology and exceptional customer support from Idaho Technology –inventors of rapid PCR, the LightCycler®, and Hi-Res Melting.

Visit us at www.idahotech.com
to learn why the LightScanner 32
is the best system for you.



Innovative solutions for pathogen identification and DNA research

Salt Lake City, Utah, USA | 1-800-735-6544 | www.idahotech.com

CAREER TRACKS

Dedicated entirely to Employment, Conferences, Meetings, Fellowships, and Grants



Associate or Full Professor



The Institute of Human Virology (IHV) and the Institute for Genome Sciences (IGS), in conjunction with the Marlene and Stewart Greenebaum Cancer Center at the University of Maryland School of Medicine, are searching for a faculty candidate to direct a new Division of Oncological Genomics. The new division will be located in the IHV, and coupled with full appointments in IHV and IGS, will have the ability to recruit junior faculty to support its mission. The appointment will be either at the Associate or Full Professor level commensurate with experience.

The successful candidate will have extramural funding and a track record of conducting independent and collaborative research using approaches that include genomics and bioinformatics, as well as an interest in the field of cancer. The candidate will work closely with tumor cell biologists, molecular biologists, immunologists, and epidemiologists in the IHV to identify high-risk individuals and cancers that may have an infectious etiology. Particular emphasis will be placed on cancer associated with adventitious agents, especially viruses, and the candidate will use appropriate genomics and bioinformatics approaches to identify such agents in tumors, in the tumor microenvironment, and in individuals at high risk for specific cancers. The qualified individual will have publications utilizing genomics that may be applicable to human cancer. The cancers of interest in this institute are those occurring in the context of HIV or Hepatitis C infection and include cancer of the lung, kidney, liver, ovary, prostate, brain, leukemia, lymphoma and epithelial cells. The qualified individual will have familiarity with genomic applications such as transcriptional profiling, genotyping, tiling arrays, exon throughput assays, methylation, real time PCR, microRNA analyses and automated high throughput assays, and be aware of technology leading to detection of other agents, including possibly novel ones.

IHV and IGS offer excellent laboratory facilities, competitive salary and startup packages, and access to numerous resources within the School of Medicine including state-of-the-art BSL3/ABSL3 facilities and a large-scale DNA sequencing and analysis core in a strong academic environment.

The faculty search committee will be co-chaired by Dr. Robert Gallo, Director of IHV, and Dr. Claire Fraser-Liggett, Director of IGS.

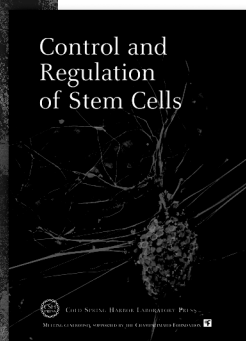
Please submit a letter of interest, CV and three references to:

Oncologic Genomics Faculty Search Committee
c/o Beth Peterson
Institute of Human Virology
725 West Lombard Street, S307
Baltimore, MD 21201
bpeterson@ihv.umaryland.edu

*The University of Maryland, Baltimore is an Equal Opportunity, Affirmative Action employer.
Minorities, women, veterans and individuals with disabilities are encouraged to apply.*

CONTROL AND REGULATION OF STEM CELLS

Cold Spring Harbor Symposia on Quantitative Biology, Volume LXXIII



Meeting organized by Bruce Stillman, David Stewart, and Terri Grodzicker, *Cold Spring Harbor Laboratory*

Based on presentations by world-renowned investigators at the 73rd annual Cold Spring Harbor Symposium on Quantitative Biology, this volume reviews the latest advances in research on the control and regulation of stem cells. The topics covered include nuclear reprogramming, regulation of stem cell self-renewal and differentiation, the stem cell niche, and signaling and gene regulation in stem cells. Studies of embryonic stem cells and adult stem cells are covered, along with research shedding light on the roles of these cells in regeneration and cancer.

Published in May 2009, 614 pp., illus., indexes

Hardcover \$310 (includes online access)

Paperback \$126

ISBN 978-087969861-4

ISBN 978-087969862-1

Contents

GERM CELLS AND TOTIPOTENCY

R. Lehmann, M.A. Surani, T. Shinohara, S. Yoshida, and D. Solter

NICHES AND ASYMMETRY

T. Xie, A.C. Spradling, R. Nusse, S. Nishikawa, S.L. Reiner, and R. Rothstein

EMBRYONIC DEVELOPMENT AND MULTIPOTENT PROGENITORS

U. Grossniklaus, G.M. Keller, L.I. Zon, K.S. Zaret, J.C. Izpisua Belmonte, and M.T. Fuller

REPROGRAMMING SOMATIC CELLS

R. Jaenisch, K. Hochedlinger, T.P. Zwaka, G.Q. Daley, and D.A. Melton

GENE EXPRESSION AND TRANSCRIPTIONAL NETWORKS

R.A. Young, S.H. Orkin, H.-H. Ng, I.R. Lemischka, R. Tjian, and S. Majumder

EPIGENETICS

B. Scheres, M.C.P. Timmermans, K. Helin, R.A. Martienssen, H. Lin, and G.J. Hannon

ADULT STEM CELLS

B.L.M. Hogan, K.R. Chien, M. Buckingham, A.J. Wagers, M.A. Rudnicki, E. Fuchs, and H. Clevers

NEURAL STEM CELLS AND BRAIN TUMORS

A. Alvarez-Buylla, N. Gaiano, L. Studer, M. Maletic-Savatic, R.D.G. McKay, J.N. Rich, L.F. Parada, and R.A. DePinho

STEM CELLS AND CANCER

I.L. Weissman, J.M. Adams, C.J. Sherr, J.E. Visvader, C.F. Kim, O.N. Witte, F.M. Watt, and S.W. Lowe

RENEWAL AND REGENERATION

A.H. Brand, M.M. Shen, S.J. Morrison, G. Sauvageau, A. Sánchez Alvarado, P.A. Newmark, and E.M. Tanaka

SUMMARY

B.L.M. Hogan

Author Index

Subject Index

www.cshlpress.com

To order or request additional information, please visit our website or:

Call: 1-800-843-4388 (Continental US and Canada) 516-422-4100 (All other locations)

Fax: 516-422-4097

E-mail: cshpress@cshl.edu

Write: Cold Spring Harbor Laboratory Press, 500 Sunnyside Blvd., Woodbury, NY 11797-2924

