

Why settle for iffy?

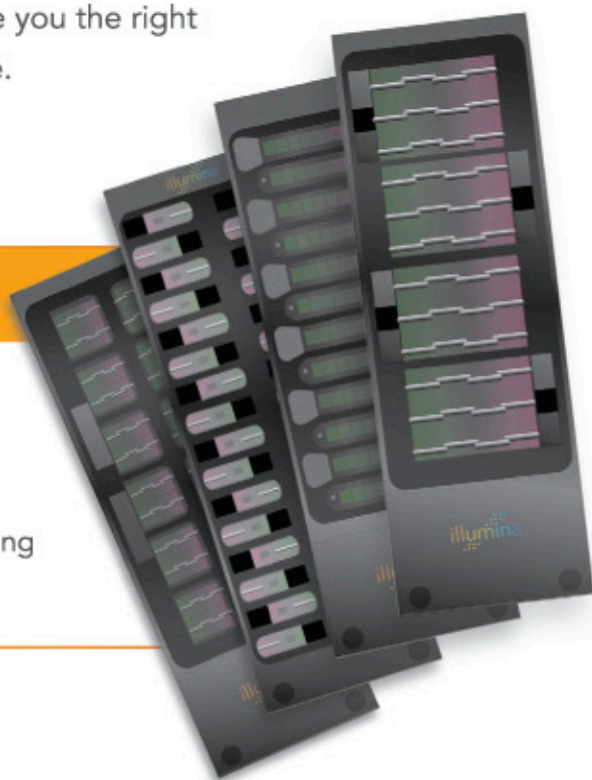
Get the proven value of Illumina® microarrays.

Your research is no place to take unnecessary risks. Not when you can use the proven Illumina microarray platform. Industry-leading call rates and data quality. Flexible options to give you the right array for your study. It's value without compromise. Only from Illumina.

The Real Deal.

Now you can get the proven value of Illumina technology—at special prices—during the Illumina Real Deal promotion.

Take advantage of these limited time offers by visiting www.illumina.com/iffy



illumina®

To catch the best deals and latest technology in life science, use the NET!

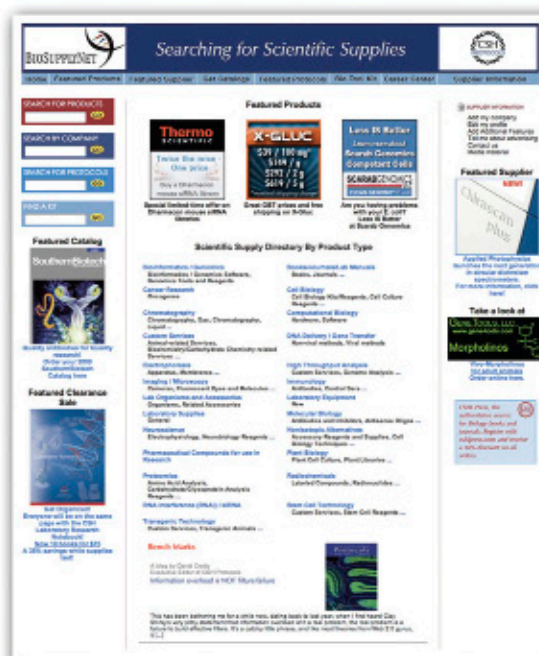
BIOSUPPLYNET



BioSupplyNet.com is your one-stop directory source for life science laboratory supplies and services. Concise and user-friendly, BioSupplyNet.com provides direct access to over 6500 companies and 20,000 products.

FEATURES:

- Download FREE protocols from Cold Spring Harbor Protocols—www.cshprotocols.org
- Search for the latest kits and catalogs
- See the latest products and special promotions
- Sign up for a free monthly newsletter detailing new protocols and products
- Visit our updated career center



www.BioSupplyNet.com



Highest-quality
data

Confidence
in my results

Best fit for my
workflow

Adaptable

Affordable



Best-in-Class, Real-Time PCR Solutions. Specific for my research.

Only Applied Biosystems delivers the highest-quality, best-in-class workflow solutions for all of your real-time PCR applications. With built-in flexibility, our systems adapt to meet your specific research needs. With 25 years of proven quality, we have the experience you need to bring superior data into your lab. When you want a real-time portfolio that can take your research to the next level, talk to the experts.



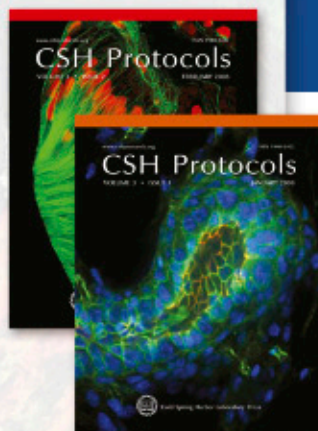
As Flexible as You Want to Be.

AB applied
biosystems™

The highest-quality, real-time PCR solutions optimized just
for you at www.appliedbiosystems.com/realsystems

For Research Use Only. Not for use in diagnostic procedures. © 2008 Life Technologies Corporation. All rights reserved.
The trademarks mentioned herein are the property of Life Technologies Corporation or their respective owners.

Cold Spring Harbor Protocols



- The online source of trusted techniques in molecular and cell biology
- Contains cutting-edge and classic protocols presented step-by-step with cautions and troubleshooting
- Frequently updated and annotated
- Interactive, customizable, and fully searchable

Subject Coverage

Antibodies
Bioinformatics/Genomics
Cell Biology
Chromatography
Computational Biology
DNA Delivery/Gene Transfer
Electrophoresis
Emerging Model Organisms
Genetics
High-Throughput Analysis
Imaging/Microscopy
Immunology
Laboratory Organisms
Molecular Biology
Neuroscience
Newly Added Protocols
Plant Biology
Polymerase Chain Reaction (PCR)
Proteins and Proteomics
RNA Interference (RNAi)/siRNA
Stem Cells
Transgenic Technology



Online. Authoritative. Indispensable.

Cold Spring Harbor Laboratory is renowned for its teaching of biomedical research techniques. For decades, participants in its celebrated, hands-on courses and users of its laboratory manuals have gained access to the most authoritative and reliable methods in molecular and cellular biology. Now that access has moved online.

Visit *Cold Spring Harbor Protocols* today and discover a rich, interactive source of new and classic research techniques. The site is fully searchable, with many tools that can be customized by users, including topic-based alerting and personal folders. Through a web-based editorial process, users also have the opportunity to add refereed comments to each protocol. Links in the online protocols offer additional resources and step-by-step instructions print out in a convenient form, complete with materials, cautions, and troubleshooting advice. Each protocol is citable, presented, and edited in the style that has made *Molecular Cloning*, *Antibodies*, *Cells*, and many other Cold Spring Harbor manuals essential to the work of scientists worldwide. The current collection of more than 1000 protocols is continuously expanded, updated, and annotated by the originators and users of the techniques.

NEW to CSH Protocols:



Emerging Model Organisms, a full-fledged guide to the use of new model systems in the laboratory, covering husbandry, genetics, genomics and basic protocols.

CSH Protocols is created by Cold Spring Harbor Laboratory Press in association with HighWire Press of Stanford University.

Executive Editor: Dr. David Crotty • ISSN 1559-6095 / online, monthly
Available exclusively via institutional site license

Request a Free Trial for Your Institution

www.cshprotocols.org

The First Choice in Protocols.

For pricing information or to request a free trial, contact us at:

Phone: 1-800-843-4388 (Continental US and Canada) or 516-422-4100 (all other locations)

Fax: 516-422-4097 E-mail: csHPress@csHL.edu Website: www.cshLPress.com

Write: Cold Spring Harbor Laboratory Press, 500 Sunnyside Blvd., Woodbury, NY 11797-2924



What is your taste?

BGI'S GENOMICS BAR



tech@genomics.org.cn
www.genomics.org.cn
86-755-25273395

Would **60** Gb/day sequencing capacity, **50** TFLOPS, **5** P storage,
200 bioinformaticians and the use of cutting-edge software programs
developed by BGI satisfy your taste?

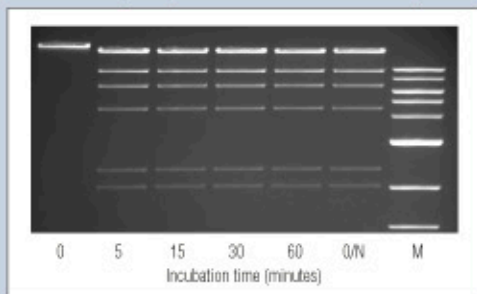
One of the world's biggest genome centers is looking for collaborators !

EXCEPTIONAL QUALITY

Restriction Enzymes from New England Biolabs

With 35 years of experience in enzyme technology, New England Biolabs leads the industry in quality, selection and innovation for restriction enzymes. Our expertise in purification coupled with a reliance on recombinant technology results in highly pure enzymes suitable for even the most sensitive applications. Additionally, stringent quality controls ensure that our enzymes deliver optimal performance. For quality you can count on, make NEB restriction enzymes your first choice.

Power and purity of NEB Restriction Enzymes



Recombinant *HindIII* is powerful enough to digest 1 µg of DNA in 5 minutes, but can also be used in overnight digests with no indication of nuclease contamination. Marker (M) is the 1 kb DNA Ladder (NEB #13232).

E1 Choose recombinant enzymes for a higher quality product with lot-to-lot consistency

Advantages:

- **Selection** – More specificities than any other supplier
- **Convenience** – Optimal activity for over 160 enzymes in a single buffer **NEB**
- **Quality** – State-of-the-art production and stringent QCs
- **Innovation** – HF enzymes engineered for reduced star activity
- **Performance** – Guaranteed

 **NEW ENGLAND**
BioLabs[®] Inc.
enabling technologies in the life sciences

CLONING & MAPPING

DNA AMPLIFICATION
& PCR

RNA ANALYSIS

PROTEIN EXPRESSION &
ANALYSIS

GENE EXPRESSION
& CELLULAR ANALYSIS

www.neb.com

less than 2 hours
+ 50 ng DNA
= Sequencer-ready library

EPICENTRE's revolutionary Nextera™ technology uses *in vitro* transposition to prepare sequencer-ready libraries from genomic DNA for multiple sequencing platforms. The technology simultaneously fragments and tags DNA, in a single-tube reaction.

- Use nanogram amounts of starting DNA.
- Prepare sequencer-ready libraries in less than 2 hours.
- Incorporate platform-specific tags and optional barcodes.
- Validated on Roche 454™ GS FLX and GS FLX Titanium™, and Illumina Solexa® GAI, GAIL.

For more information visit: www.EpiBio.com/nextera1

Nextera is a trademark of EPICENTRE Biotechnologies. 454 and GS FLX Titanium are trademarks of Roche. Solexa is a registered trademark of Illumina, Inc.



www.EpiBio.com 800-284-8474

Plant & Animal Genome XVIII



The International Conference on the Status of Plant & Animal Genome Research

January 9-13, 2010

Town & Country Hotel, San Diego, California

Speakers

Eric Schadt, Pacific Biosciences
Peter Raven, Missouri Botanical Garden
Howard Jacob, Medical College of Wisconsin
Evan Eichler, Washington University
Joanne Chory, Salk Institute
Robb Fraley, Monsanto
Vicki Chandler, University of Arizona

Workshops

- Abiotic Stress
- Allele Mining
- Animal Epigenetics
- Apomixis
- Aquaculture
- Arthropod Genomics
- Avocado
- Banana (Musa) Genomics
- Barley
- Bioinformatics
- Brassicas
- Brachypodium Distachyon
- Cacao Genome Sequencing
- Canadian Swine
- Cattle/Sheep
- Challenge Program: Unlocking Crop Genetic Diversity for the Poor
- Citrus
- Coffee Genomics
- Comparative Genomics
- Compositae
- Computer Demonstrations
- Connectrons
- Cool Season Legumes
- Cotton
- Cururbit
- Equine
- Euphorbiaceae
- Evolution of Genome Size
- Forage & Turf Plants
- Forest Trees Fruit and Nut Crops
- Functional Genomics
- Fungal Genomics
- Gene Expression Analysis
- Genomics Assisted Breeding
- Genomics for Plant Disease Resistance
- Host-Microbe Interactions
- Host Pathogen Interactions
- Insect Genetics
- Int'l Wheat Genome Sequencing Consortium
- ICSB
- ICGI
- Int'l Grape Genome Project
- Int'l Lolium Genome Initiative
- IGGI
- ITMI
- Large-Insert DNA Libraries
- Legumes
- Maize
- Molecular Markers for Plant Breeders
- Mutation Screening
- NCBI
- Non-Seed Plants
- NRSP-8
- NSF/USDA CREES Microbial Genome
- Oats
- Organellar Genetics
- Ornamentals
- Plant Alien Introgression
- Plant Cytogenetics
- Plant Development and Signal Networks
- Plant Epigenomics
- Plant Interactions with Pests and Pathogens
- Plant Metabolic Pathway Regulation
- Plant Reproductive Genomics
- Plant Transgene Genetics
- Population and Conservation Genomics
- Polyploidy
- Poultry
- Protein Information Resource
- Proteomics
- QTL Cloning
- Recombination
- Rice
- Rice Blast
- Root Genomics
- Sequencing Complex Genomes
- Sex Chromosomes and Sex Determination
- Small RNA
- Solanaceae
- Sorghum and Millets
- Soybean Genomics
- Statistical Genomics
- Sugar Beet
- Sugar Genome Sequencing Initiative
- Swine
- Swine Genome Sequencing
- TAIR
- Transposable Elements
- Weedy and Invasive Plant Genomics

Organizing Committee

CHAIRMAN:
Stephen R. Heller, NIST, USA

PLANTS:
Michael Gale, John Innes Center, UK
Ed Kaleikau, USDA/CSREES, USA
Dave Matthews, USDA, ARS Cornell University, USA
Graham Moore, John Innes Center, UK
Jerome P. Miksche, Emeritus Director, USDA Plant Genome Program, USA
Rod Wing, University of Arizona, USA

ABSTRACT COORDINATORS:
Victoria Carollo, USDA, ARS, WRRRC, USA
Gerard Lazo, USDA/ARS/WRRRC, Albany, CA, USA
David Grant, USDA/ARS & Iowa State University, USA

ANIMALS:
Cecilia Penedo, UC - Davis, USA
Shu-Hong Zhao, Huazhong Agricultural University, China
Christopher Bidwell, Purdue University, USA
John Liu, Auburn University, USA

Sponsors

USDA, Agricultural Research Service
USDA, National Agricultural Library
USDA, Cooperative State Research, Education, and Extension Service (CSREES)
John Innes Centre
NCGR, National Center for Genome Resources

Presented by

Scherago International
525 Washington Blvd., Ste. 3310
Jersey City, NJ 07310
201-653-4777 x20
fax: 201-653-5705
E-mail: pag@schicago.com

For complete details, including on-line registration, visit our website at www.intl-pag.org



Gordon Research Conferences *frontiers of science*

There has never been a better time to experience a Gordon Research Conference! Our high quality, cost-effective meetings are widely recognized as the world's premier scientific conferences.

Cellular & Molecular Fungal Biology

June 13-18, 2010

Holderness School

Holderness, NH

Chairs: Michelle Momany & John Taylor

Chromatin Structure & Function

July 25-30, 2010

Bryant University

Smithfield, RI

Chair: Robert Kingston

DNA Damage, Mutation & Cancer

March 21-26, 2010

Ventura Beach Marriott

Ventura, CA

Chair: Joann B. Sweasy

Environmental Bioinorganic Chemistry

Elements In The Environment,

From Prokaryotes To Planets

June 13-18, 2010

Salve Regina University

Newport, RI

Chairs: Rachel N. Austin & Ariel D. Anbar

Genes & Behavior

Integration

March 14-19, 2010

Ventura Beach Marriott

Ventura, CA

Chair: David F. Clayton

-and-

Genes & Behavior (GRS)

Gordon-Kenan Research Seminar

March 13-14, 2010

Ventura Beach Marriott

Ventura, CA

Chairs: Seth A. Ament & Margaret S. Ferris

Post-Transcriptional Gene Regulation, The Biology Of

July 18-23, 2010

Salve Regina University

Newport, RI

Chair: Lynne E. Maquat

Spirochetes, Biology Of

January 31 - February 5, 2010

Ventura Beach Marriott

Ventura, CA

Chair: Richard P. Ellen

APPLY NOW! See why our attendees consistently rate GRCs "the best conference I've attended this year"!

Visit us on the web at: www.grc.org