

you&i

SNP genotyping.
Gene expression.
And now Solexa® sequencing.
Let's find the answers together.

It's your research. Your question. You test.
You want answers—quickly, accurately, and at a good value.

Illumina has the tools that address the core applications in modern genetic analysis—SNP genotyping, gene expression, and now sequencing. Working alongside you, Illumina strives to make it as easy as possible to find the answers that move your research forward. By continually replicating the cycle of listening, anticipating, and innovating, we are pioneering new applications like CNV analysis and DNA methylation.

Together we are the Illumina Community. We collaborate to deliver easy-to-use tools with the highest quality and best value that enable all of us to help understand, cure, and ultimately prevent disease.

Is it time for you to join the Illumina Community?
Let's find the answers together.



www.illumina.com



Cold Spring Harbor Protocols



Subject Coverage

Antibodies
Bioinformatics/Genomics
Cell Biology
Chromatography
Computational Biology
DNA Delivery/Gene Transfer
Electrophoresis
Genetics
High Throughput Analysis
Imaging/Microscopy
Immunology
Laboratory Organisms
Molecular Biology
Neuroscience
Plant Biology
Polymerase Chain Reaction (PCR)
Proteins and Proteomics
RNA Interference (RNAi)/siRNA
Stem Cells
Transgenic Technology

Lights, Camera, Methods!

Now you can see results of the finest methods in action with new online movies in *CSH Protocols*.

The November issue of *CSH Protocols* features methods for tracking RNA and protein molecules in both cells and organisms, and introduces new multimedia content made possible by online presentation: movies showing examples of these techniques in action.

Read—and see—these newly featured protocols online at www.cshprotocols.org:

- Photoactivation-Based Labeling and In Vivo Tracking of RNA Molecules in the Nucleus
- Selection of Appropriate Imaging Equipment and Methodology for Live Cell Imaging in *Drosophila*

CSH Protocols offers cutting edge and classic protocols in molecular and cell biology from laboratories worldwide, along with methods from Cold Spring Harbor Laboratory's renowned manuals and on-site courses. Free trials and discounted subscriptions are available for a limited time.

CSH Protocols is created by Cold Spring Harbor Laboratory Press in association with HighWire Press of Stanford University.

Cold Spring Harbor Protocols • Executive Editor: Dr. Michael Ronemus
ISSN 1559-6095 / online, monthly • Available exclusively via institutional site license

www.cshprotocols.org
The First Choice in Protocols.

For pricing information or to request a free trial visit the website or:

Phone: 1-800-843-4388 (Continental US and Canada) or 516-422-4100 (all other locations)

FAX: 516-422-4097 E-mail: cshpress@cshl.edu

Write: Cold Spring Harbor Laboratory Press, 500 Sunnyside Blvd., Woodbury, NY 11797-2924



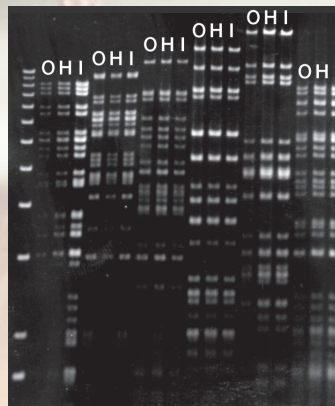
CopyControl™ Genomic Cloning. . .

The **stability** of single-copy vectors AND the **DNA yields** of high-copy clones

Have your cake and eat it too!

CopyControl™ BAC Cloning Kits contain all the molecular biology reagents needed for constructing high-quality, large-insert BAC libraries - *fast and easy*.

- **Better Cloning Efficiency**—Pre-cut, linearized vectors provide maximum cloning efficiency with very few empty clones.
- **Shorter Construction Time**—The fast ligation and size-screening components in the kits shorten the construction process by at least 3 days.
- **Higher DNA Yields**—The CopyControl™ feature allows yields of up to 5 µg per ml of culture when using the new Autoinduction protocol.



Fingerprints of zero generation (O), one hundred generation (H) and induced (I) CopyControl™ BACs. The consistent banding patterns displayed by the BACs indicate excellent clone stability, even after the multi-copy CopyControl origin is induced. Equal amounts of BAC DNA were loaded into each lane.

EPICENTRE offers a full line of genomic library products. Check them out!
Simply go to www.EpiBio.com and enter QuickInfo code: **CBAX1**





NEW
ENGLAND
BIOLABS

in a word, fast.





Phusion™ High-Fidelity DNA Polymerase from New England Biolabs

EXTREME PRECISION WITH UNPARALLELED SPEED AND ROBUSTNESS

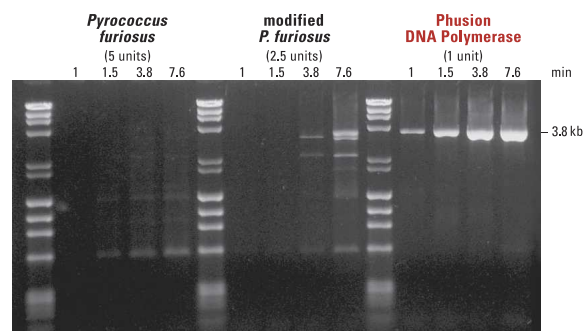
With Phusion High-Fidelity DNA Polymerase, there is no need to compromise any aspect of your PCR performance. A superior choice for cloning, this recombinant polymerase has an error rate 50-fold lower than *Taq* DNA Polymerase, making it the most accurate thermostable polymerase available. Phusion DNA Polymerase is supplied in a variety of formats, or with a **hot start modification** for increased specificity.

Advantages:

- Extreme Fidelity – Highest of any thermostable polymerase
- High Speed – Extension times are dramatically reduced
- Robustness – Reduce reaction failures with minimal optimization
- High Yield – Increase product yields with minimal enzyme amounts
- Specificity – Hot start modification reduces non-specific amplification

- **Phusion High-Fidelity DNA Polymerase**  **F-530S/L**
- **Phusion Hot Start High-Fidelity DNA Polymerase**  **F-540S/L**
- **Phusion High-Fidelity PCR Master Mix**  **F-531S/L**
F-532S/L
- **Phusion High-Fidelity PCR Kit**  **F-553S/L**

 = Recombinant



Experience extreme speed and yield with Phusion High-Fidelity DNA Polymerase. A 3.8 kb fragment from human beta globin gene was amplified according to suppliers' recommendations using varying extension times. Phusion DNA Polymerase was able to amplify the fragment with a combined annealing and extension step of only 1 minute. Also, a single unit of Phusion DNA Polymerase produced higher yields than 2.5 or 5 units of *Pyrococcus furiosus* DNA Polymerases.

Phusion™ is a trademark of Finnzymes Oy

For more information please visit www.neb.com

- **New England Biolabs Inc.** 1-800-NEB-LABS Tel. (978) 927-5054 Fax (978) 921-1350 info@neb.com
- **Canada** Tel. (800) 387-1095 info@ca.neb.com
- **Germany** Tel. 0800/246 5227 info@de.neb.com
- **UK** Tel. (0800) 318486 info@uk.neb.com
- **China** Tel. 010-82378266 beijing@neb-china.com

Produced by



Distributed by



From a to α

Yeast as a Model for Cellular Differentiation

By Hiten D. Madhani, *University of California, San Francisco*

From a to α is a short supplemental textbook that uses control of yeast mating type as a model for many aspects of cell determination in general. Topics covered include gene silencing; genetic recombination; differentiation; combinatorial gene regulation; mRNA transport to establish asymmetric cell division; signal transduction; evolution of genetic networks; and various aspects of cell biology, including action of cytoskeleton and bud site selection. The book has a foreword by Mark Ptashne, author of *A Genetic Switch*.

2007, 115 pp., illus., index

Hardcover \$59

Paperback \$39

From a to α
Yeast as a Model
for Cellular Differentiation

Hiten Madhani

ISBN 0-87969-737-7

ISBN 0-87969-738-5

CONTENTS

Foreword, *M. Ptashne*

1. Why Read a Book about Yeast?

2. Yeast Cell Types

3. Master Regulatory Transcription Factors
Control Cell Type

4. Making and Secreting Cell Type-specific
Signals

5. Detecting and Responding to a Signal

6. How Division of a Single Cell Can
Produce Two Cell Types

7. Gene Silencing in the Control of
Cell Type

8. Controlling Cell Polarity

9. Evolution of Cell Type Determination

Index

Gold Member Discount Program Register today at

www.cshlpress.com

and receive 10% discounts on all web site purchases.

To order or request additional information:

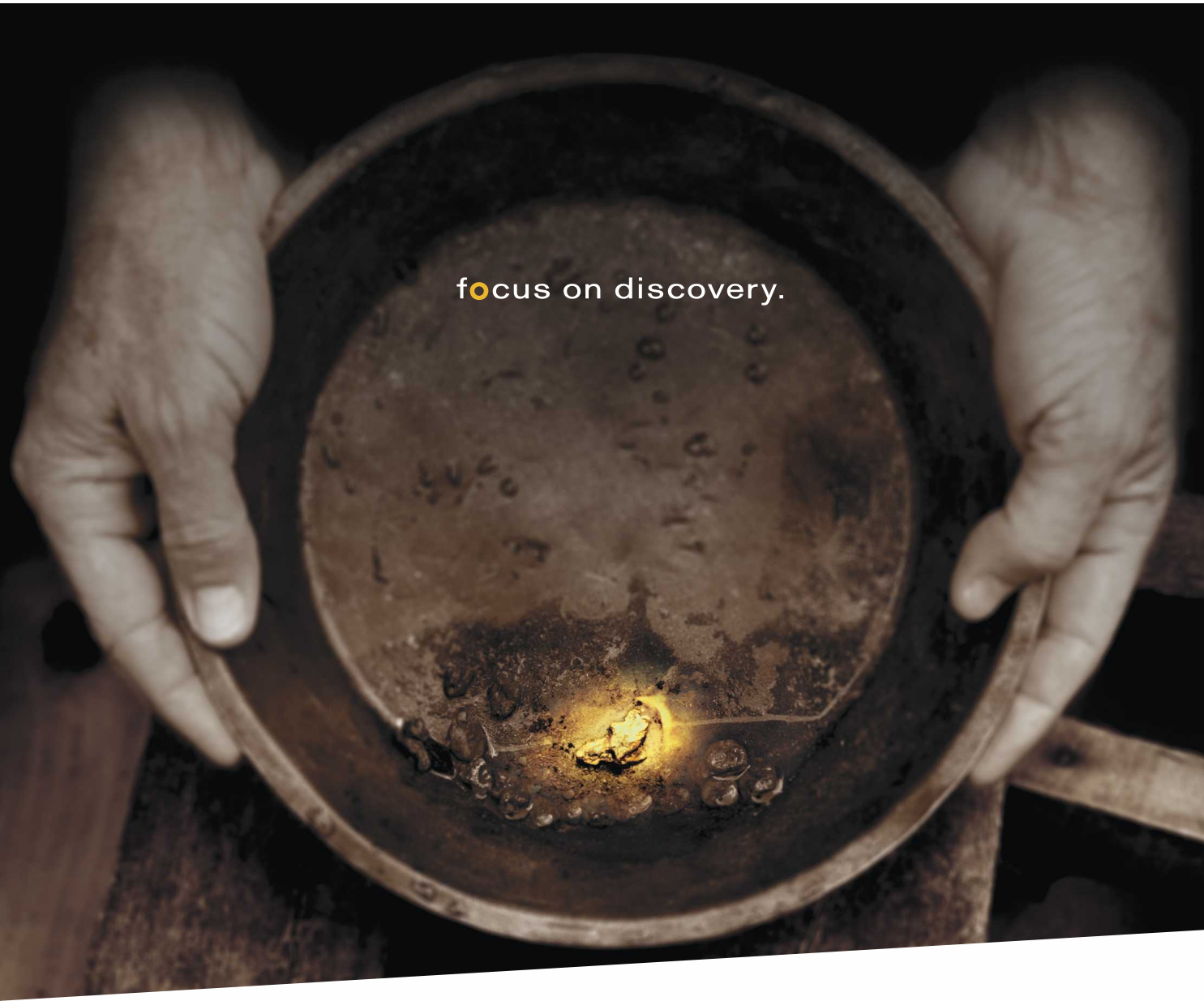
Call: 1-800-843-4388 (Continental US and Canada) 516-422-4100 (All other locations)

FAX: 516-422-4097

E-mail: cshpress@cshl.edu or WWW Site: www.cshlpress.com

Write: Cold Spring Harbor Laboratory Press, 500 Sunnyside Blvd., Woodbury, NY 11797-2924





focus on discovery.

Discover More with the World's Finest Full-Length Clone Collection

The Mammalian Gene Collection (MGC) is quite simply the best clone collection in the world, brought to you by the greatest minds in genomic research. Generated and sequenced by a consortium of leading NIH funded laboratories, our cDNA resource contains a complete open reading frame (ORF) for every human, mouse, and rat gene represented. The power of discovery is at your fingertips.

- Every MGC clone is fully sequenced with complete ORF
- Assay-ready DNA in microplate format upon request
- Online clone query quickly identifies the clone you need

"Open Biosystems' MGC collection is an invaluable resource for CCSB, the Dana-Farber Center for Cancer Systems Biology. It has cut years off the development of a human protein-protein interaction map."

Marc Vidal
Dana-Farber Cancer Institute

Why experiment when you can discover?

Your expert partner for
Genomic, RNAi and Proteomic resources.



GENOMICS • RNAi • PROTEOMICS
express repress detect

Toll Free 888.412.2225
www.openbiosystems.com

CAREER TRACKS

Dedicated entirely to Employment, Conferences, Meetings, Fellowships, and Grants



Supporting The Mission Of Columbus Children's Hospital, Inc.

Multiple Faculty Positions Quantitative & Computational Biology



The newly established Center for Quantitative & Computational Biology (CQCB) at Columbus Children's Research Institute, an affiliate of Columbus Children's Hospital and the Department of Pediatrics of The Ohio State University College of Medicine, is seeking to fill multiple open rank tenure track positions. We are looking for candidates who can extend the quantitative and computational technologies of the Center in creative ways; who are interested in both basic quantitative research and collaborative clinical research; and who seek a highly collaborative, research-focused environment. Appointments at the Assistant, Associate, and Full Professor level are anticipated. Candidates are expected to have a Ph.D. or equivalent degree in a statistical, mathematical or computational field, or an M.D. or Ph.D. in a biomedical field with a quantitative or computational research focus. Generous start-up packages are available.

Established in August, 2006, the mission of the CQCB is to assemble and support a broad range of mathematical, statistical, and computational experts for the purposes of conducting cutting-edge quantitative research, with the ultimate goal of informing and improving clinical care in pediatrics. Building upon existing expertise in statistical modeling in genetics, parallel computing, computational algorithms, and databases, the CQCB will be undergoing a rapid expansion over the next few years, increasing in both scope and size. Noteworthy features of the CQCB include an in-house "R&D" laboratory, providing core support for production level software development, a simulation facility, database support, and a molecular laboratory for testing novel modeling methods. The CQCB currently supports an Apex cluster with 64 computing nodes, each powered by two 2.4 or 2.6 GHz AMD Dual-Core Opteron processors, 16GB memory, and an 80GB hard disk; 4TB network storage systems with built-in RAID5 for redundancy; and gigabit network switch. Expansion of this basic system is scheduled at regular intervals as the CQCB grows. We are scheduled to move into customized space in a new research building early in 2008.

Columbus Children's Hospital is the fifth largest free standing children's hospital in the United States. The Research Institute is housed in a modern 300,000 square foot, dedicated research facility with outstanding shared facilities and core laboratories. Federal grant awards in 2006 exceeded 31 million dollars. The Research Institute is equipped with state-of-the-art transgenic, embryonic stem cell, DNA sequencing, morphology, microarray, and viral vector core facilities. In addition to appointments in the College of Medicine, joint faculty appointments in graduate departments at The Ohio State University are also available. For more information, please visit our website at www.ccri.net. Send correspondence, including curriculum vitae and contact information for three references to vielandv@ccri.net or to: Veronica Vieland, CQCB Director and Search Committee Chair, Columbus Children's Research Institute, 700 Children's Drive Room W4021, Columbus, OH 43205; FAX: (614) 355-2728.

Children's Hospital, Inc. and The Ohio State University are Affirmative Action/Equal Opportunity Employers. Qualified women, minorities, Vietnam-era veterans, disabled veterans and individuals with disabilities are encouraged to apply.



Genome Research **seeks an Assistant Editor**

Genome Research is an international, continuously published, peer-reviewed journal that focuses on research that provides novel insights into the genome biology of all organisms, including advances in genomic medicine. The journal was launched in August 1995 by Cold Spring Harbor Laboratory (CSHL) Press and is currently ranked fourth among all primary research genetics publications, second in biotechnology, and in the top ten of all biochemistry and molecular biology publications.

Cold Spring Harbor Laboratory Press seeks a scientist interested in making a career in the communication of science to fill the position of Assistant Editor at *Genome Research*.

The applicant must have, or be about to receive, a Ph.D. in the biological sciences, preferably with experience in genetics and genomic science. The successful candidate will assist the Executive Editor of the journal in manuscript selection and negotiation with authors, peer reviewers, and Editorial Board members; commissioning reviews and features; representing the journal at conferences; and identifying emerging trends. Strong communication and organizational skills, creativity, ability to meet deadlines, and the capacity to handle many projects at once are significant requirements. Broad interests in science and experience in the communication of science would be helpful. We seek a team player with energy, enthusiasm, and excellent interpersonal skills who is comfortable interacting with scientists at all levels.

CSHL Press is affiliated with Cold Spring Harbor Laboratory, located on the North Shore of Long Island, 35 miles from New York City. We offer a competitive salary and benefits package.

Please submit a curriculum vitae and a cover letter explaining your interest in the position to:

**Human Resources Department
Cold Spring Harbor Laboratory
1 Bungtown Road
Cold Spring Harbor, NY 11724
jobline@cshl.org
FAX 516-367-6850**