

focus on discovery.

Discover More with the World's Finest Full-Length Clone Collection

The Mammalian Gene Collection (MGC) is quite simply the best clone collection in the world, brought to you by the greatest minds in genomic research. Generated and sequenced by a consortium of leading NIH funded laboratories, our cDNA resource contains a complete open reading frame (ORF) for every human, mouse, and rat gene represented. The power of discovery is at your fingertips.

- Every MGC clone is fully sequenced with complete ORF
- Assay-ready DNA in microplate format upon request
- Online clone query quickly identifies the clone you need

"Open Biosystems' MGC collection is an invaluable resource for CCSB, the Dana-Farber Center for Cancer Systems Biology. It has cut years off the development of a human protein-protein interaction map."

Marc Vidal
Dana-Farber Cancer Institute

Why experiment when you can discover?

Your expert partner for
Genomic, RNAi and Proteomic resources.



Toll Free 888.412.2225
www.openbiosystems.com

GENOMICS • RNAi • PROTEOMICS
express repress detect



Cold Spring Harbor Protocols



Subject Coverage

Antibodies
Bioinformatics/Genomics
Cell Biology
Chromatography
Computational Biology
DNA Delivery/Gene Transfer
Electrophoresis
Genetics
High Throughput Analysis
Imaging/Microscopy
Immunology
Laboratory Organisms
Molecular Biology
Neuroscience
Plant Biology
Polymerase Chain Reaction (PCR)
Proteins and Proteomics
RNA Interference (RNAi)/siRNA
Stem Cells
Transgenic Technology

Lights, Camera, Methods!

Now you can see results of the finest methods in action with new online movies in *CSH Protocols*.

The November issue of *CSH Protocols* features methods for tracking RNA and protein molecules in both cells and organisms, and introduces new multimedia content made possible by online presentation: movies showing examples of these techniques in action.

Read—and see—these newly featured protocols online at www.cshprotocols.org:

- Photoactivation-Based Labeling and In Vivo Tracking of RNA Molecules in the Nucleus
- Selection of Appropriate Imaging Equipment and Methodology for Live Cell Imaging in *Drosophila*

CSH Protocols offers cutting edge and classic protocols in molecular and cell biology from laboratories worldwide, along with methods from Cold Spring Harbor Laboratory's renowned manuals and on-site courses. Free trials and discounted subscriptions are available for a limited time.

CSH Protocols is created by Cold Spring Harbor Laboratory Press in association with HighWire Press of Stanford University.

Cold Spring Harbor Protocols • Executive Editor: Dr. Michael Ronemus
ISSN 1559-6095 / online, monthly • Available exclusively via institutional site license

www.cshprotocols.org

The First Choice in Protocols.

For pricing information or to request a free trial visit the website or:

Phone: 1-800-843-4388 (Continental US and Canada) or 516-422-4100 (all other locations)

FAX: 516-422-4097 E-mail: cshpress@cshl.edu

Write: Cold Spring Harbor Laboratory Press, 500 Sunnyside Blvd., Woodbury, NY 11797-2924



**High Yields.
High Purity.
High Throughput.
Low Cost.**

Clean DNA.

EPICENTRE's New

BACMAX96™ DNA Purification Kit gives you high throughput purification of high quality BAC and Fosmid DNA in a 96-well plate.

High throughput—

Up to 384 BAC or Fosmid preps in 3.5 hours, with or without automation.

Yields—

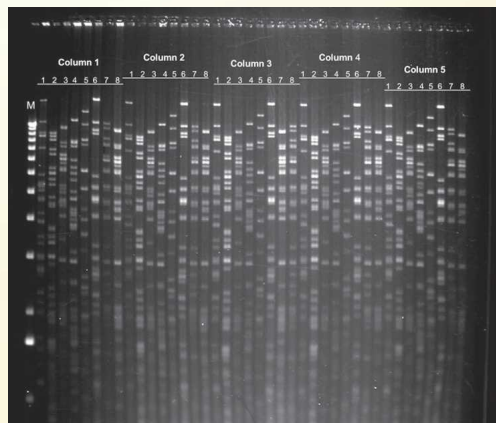
Up to 900ng with standard single-copy BACs and up to 2.5ug with induced CopyControl™ vectors.

DNA purity—

Plasmid-Safe™ ATP-Dependent DNase and BACMAX96™ RNase blend remove genomic DNA and RNA contaminants.

Autoinduction protocol—

An optional overnight autoinduction step induces CopyControl™ vectors, increasing yields without time-consuming sub-culturing.



Fingerprints of eight autoinduced CopyControl™ BACs in five replicates purified in a 96-well plate using BACMAX96™. Consistent high yields and banding patterns indicate the stability of the BAC throughout the autoinduction and purification process.



EPICENTRE®
Biotechnologies

For more information, go to
www.EpiBio.com & enter
QuickInfo code: **BMAX2**



effortless at any scale.



K. lactis Protein Expression Kit from New England Biolabs

YEAST PROTEIN EXPRESSION MADE EASY

The *K. lactis* Protein Expression Kit provides a simple method to clone and express your gene of interest in the yeast *Kluyveromyces lactis*. This system offers many advantages over bacterial systems and eliminates the methanol containing medium and antibiotic requirements of *Pichia pastoris*. With easy-to-use protocols and highly competent *K. lactis* cells included, this system can take you from bench top to large scale production with ease.

Advantages:

- High yield protein expression
- Rapid high cell density growth
- Methanol-free growth media
- Plasmid integration enhances stability
- Acetamide selection enriches for multi-copy integrants, enhancing yield
- Tight control of gene expression enables expression of toxic genes
- Access to eukaryotic protein folding and glycosylation machinery
- Simultaneous expression of multiple proteins
- Ease-of-use for those inexperienced with yeast systems
- Yeast competent cells included
- No license required for research use

***K. lactis* Protein Expression Kit E1000**

Kit components sold separately

***K. lactis* GG799 Competent Cells C1001**

pKLAC1 Vector N3740

	<i>K. lactis</i>	<i>P. pastoris</i>
High yield expression	✓	✓
Rapid high cell density growth	✓	✓
Yeast Competent Cells Included	✓	
Methanol-free growth media	✓	
Antibiotic-free Selection	✓	
Enhanced multi-copy integration	✓	
Protein folding and glycosylation	✓	✓
Expression of genes toxic to <i>E. coli</i>	✓	✓

Quick comparison of *K. lactis* and *P. pastoris* expression systems.

For more information and international distribution network, please visit www.neb.com

■ **New England Biolabs Inc.** 240 County Road, Ipswich, MA 01938 USA 1-800-NEB-LABS Tel. (978) 927-5054 Fax (978) 921-1350 info@neb.com

■ **Canada** Tel. (800) 387-1095 info@ca.neb.com

■ **Germany** Tel. 0800/246 5227 info@de.neb.com

■ **UK** Tel. (0800) 318486 info@uk.neb.com

■ **China** Tel. 010-82378266 beijing@neb-china.com

CAREER TRACKS

Dedicated entirely to Employment, Conferences, Meetings, Fellowships, and Grants

Berkeley



University of California

FACULTY POSITION IN COMPUTATIONAL BIOLOGY #1061S

The University of California, Berkeley invites applications for a position in the area of Computational Biology at the assistant (tenure track), associate or full professor level starting July 1, 2007. The University has committed to establishing Berkeley as a premier institution for education, training and research in Computational Biology, with extensive research activities, full integration between multiple UC campuses through QB3, and relevant programs at the Lawrence Berkeley National Laboratory (LBNL) and the Joint Genome Institute (JGI). This position is associated with the Center for Computational Biology, which includes computational scientists across the full spectrum of the mathematical, physical, engineering and biological sciences, creating an exceptional environment for both research and education in this rapidly growing field. The focus of this position is on the mathematical sciences, and the holder of the position will have a primary appointment in an academic department appropriate to his or her interests.

Applicants should have a research focus in the broad area of Computational Biology and hold (or be about to receive) a doctoral degree or equivalent in a quantitative field. The scope of the position includes all areas where mathematical, statistical and computational methods are used to solve problems in biology. Specialized areas may include, but are not limited to:

- Statistical methodology, mathematical modeling, algorithms, computing and databases
- Biological inference from heterogeneous data sources such as nucleotide and protein sequences, protein structure, microarray data and polymorphisms
- Population genetics and evolutionary modeling

We seek individuals with demonstrated excellence in research, and the potential for excellence in teaching and leadership. Successful applicants will be expected to establish a pre-eminent research and educational program, and develop and teach courses in appropriate areas of the computational sciences.

Applicants should send a curriculum vitae, a selection of publication reprints (five or less), and a brief statement of research plans and teaching interests, highly preferred to be sent electronically, in pdf format, to the email address below. The applicant should also arrange for three letters of reference to arrive by December 15, 2006, to the same email address below. Please refer potential reviewers to the UC Berkeley Statement of Confidentiality found at: <http://apo.chance.berkeley.edu/evaltr.html>.

CBI_Recruitment@berkeley.edu (electronic/pdf submissions highly preferred)

-or-

Professor Michael Jordan, Committee Chair
Center for Computational Biology, #1061S
University of California, Berkeley
227 Hildebrand Hall, Berkeley, CA 94720-3220

All applications must be complete by **December 15, 2006** for consideration in this year's recruitment cycle.

The University of California is an Equal Opportunity/Affirmative Action Employer

McGILL UNIVERSITY
School of Computer Science
Assistant Professor

The School of Computer Science at McGill University wishes to invite applications for a tenure-track position at the assistant professor level, to begin July 1, 2007. Applications for more senior positions are also welcome. We are searching for a computational biologist who is interested in one of the following areas: algorithms in bioinformatics, machine learning/statistical inference in bioinformatics, dynamical models in bioinformatics, and bioinformatics database and system design.

Bioinformatics at McGill University has greatly expanded over the past six years and candidates would benefit from the world class medical school and biomedical research programs. The McGill Centre for Bioinformatics is comprised of approximately 16 members who are involved in large scale projects that include (but are not limited to) areas such as genomics, epigenomics, functional genomics, proteomics, structural biology, chemi-informatics, clinical informatics, modelling in physiology, and evolution.

The review of applications will begin on January 9, 2007, and applications should be submitted by that date; however, applications will continue to be accepted until March 1, 2007, or until the position is filled.

McGill is the top-rated research university in Canada. It is located in the heart of vibrant, multicultural Montreal. For further information about our department, see: <http://www.cs.mcgill.ca>, and for information on the McGill Centre for Bioinformatics, see: <http://www.mcb.mcgill.ca>.

Complete hardcopy or pdf format applications, including a curriculum vitae, a list of publications with copies of one or two sample reprints, a research statement as well as a teaching statement, and the names and e-mail addresses of three references should be sent to biosearch@cs.mcgill.ca, or mailed to the address below:

Bioinformatics Search Committee
School of Computer Science
3480 University Street, Room 318
Montreal, QC H3A 2A7, Canada

We encourage all qualified candidates to apply; however, Canadians and permanent residents of Canada will be given priority. McGill University is committed to equity in employment.



Rebecca and John Moores

UCSD Cancer Center
An NCI-Designated Comprehensive Cancer Center

UCSD Center for Human Genetics and Genomics

The Moores UCSD Cancer Center (<http://www.cancer.ucsd.edu/>) and the UCSD Center for Human Genetics and Genomics (<http://chgg.ucsd.edu/>) invites applications for two positions at the Assistant to Associate Professor level in Quantitative, Computational, or Statistical Biology. The appointments will be joint between either the Division of Biological Sciences or the School of Engineering and the School of Medicine and will involve teaching at both the graduate and undergraduate levels. The ideal candidates will possess a doctoral degree and be well trained in both biological and computing sciences with a track record of peer-reviewed dry lab research with related publications that are relevant to clinical investigations. It is expected that the successful candidates participate in a medical bioinformatics team that will be located in the new 270,000 sq. ft. research and clinical building associated with the UCSD Moores Cancer Center. Applicants with research areas in analysis of genomics and proteomics data, including the statistical mining of high-throughput molecular data, evolutionary analyses, and modeling of pathways leading to onset and progression of cancer and development, will be given strong consideration, although other research areas of interest are clinical informatics, artificial intelligence, and machine learning, particularly if related to software architectures for scalable systems that can operate effectively in complex clinical and biological situations. Examples include building decision-support programs that assist physicians in caring for patients in accordance with predefined treatment or clinical trial protocols and multivariate analyses of complex biological processes.

More information on the Moores UCSD Cancer Center, an NCI designated comprehensive cancer center, may be found at <http://cancer.ucsd.edu>. More information on the UCSD Center for Human Genetics and Genomics can be found at <http://chgg.ucsd.edu/>.

Applicants should e-mail their curriculum vitae and names and addresses of three references by December 23, 2006 to schorklab@ucsd.edu or mail to:

Nicholas J. Schork, PhD
Chair, Search Committee
Moores UCSD Cancer Center
University of California, San Diego
9500 Gilman Drive, 0603
La Jolla CA 92093-0603



UCSD is an EO/AA employer with a strong institutional commitment to excellence through diversity.



GORDON RESEARCH CONFERENCES

GRC is holding over 180 meetings in 2007. A few upcoming meetings that may be of particular relevance to *Genome Research* readers are listed below.

AGRICULTURAL SCIENCE

March 11-16, 2007

Four Points Sheraton: Harbortown
Ventura, CA

Chairs: Ken Feldmann & Wilhelm Gruissem

TEMPERATURE STRESS IN PLANTS

January 21-26, 2007

Four Points Sheraton: Harbortown
Ventura, CA

Chairs: Elizabeth Vierling & Kazuko Yamaguchi-Shinozaki

STRUCTURAL, FUNCTIONAL & EVOLUTIONARY GENOMICS

July 29-Aug 3, 2007

Wellcome Trust Conference Centre
Hinxton, U.K.

Chair: Eugene Koonin

HUMAN GENETICS & GENOMICS

July 22-27, 2007

Salve Regina University
Newport, RI

Chair: James Lupski

EVOLUTIONARY & ECOLOGICAL FUNCTIONAL GENOMICS

July 8-13, 2007

Salve Regina University
Newport, RI

Chair: Greg Wray

75 years at the frontiers of science: **www.grc.org**



Genome Research **seeks an Assistant Editor**

Genome Research is an international, continuously published, peer-reviewed journal that focuses on research that provides novel insights into the genome biology of all organisms, including advances in genomic medicine. The journal was launched in August 1995 by Cold Spring Harbor Laboratory (CSHL) Press and is currently ranked fourth among all primary research genetics publications, second in biotechnology, and in the top ten of all biochemistry and molecular biology publications.

Cold Spring Harbor Laboratory Press seeks a scientist interested in making a career in the communication of science to fill the position of Assistant Editor at *Genome Research*.

The applicant must have, or be about to receive, a Ph.D. in the biological sciences, preferably with experience in genetics and genomic science. The successful candidate will assist the Executive Editor of the journal in manuscript selection and negotiation with authors, peer reviewers, and Editorial Board members; commissioning reviews and features; representing the journal at conferences; and identifying emerging trends. Strong communication and organizational skills, creativity, ability to meet deadlines, and the capacity to handle many projects at once are significant requirements. Broad interests in science and experience in the communication of science would be helpful. We seek a team player with energy, enthusiasm, and excellent interpersonal skills who is comfortable interacting with scientists at all levels.

CSHL Press is affiliated with Cold Spring Harbor Laboratory, located on the North Shore of Long Island, 35 miles from New York City. We offer a competitive salary and benefits package.

Please submit a curriculum vitae and a cover letter explaining your interest in the position to:

**Human Resources Department
Cold Spring Harbor Laboratory
1 Bungtown Road
Cold Spring Harbor, NY 11724
jobline@cshl.org
FAX 516-367-6850**