

**November, 1991**  
**Volume 1, Number 2**

**Associate Editors**

David Bentley  
*Guy's Hospital, London*  
 Richard Gibbs  
*Baylor College of Medicine*  
 Eric Green  
*Washington University*  
*School of Medicine*  
 Richard Myers  
*University of California, San Francisco*

**Editorial Board**

Johannes Bos  
*University of Utrecht*  
 David Botstein  
*Stanford University School of Medicine*  
 Jeff Chamberlain  
*University of Michigan Medical School*  
 Henry Erlich  
*Cetus Corporation*  
 Kenshi Hayashi  
*National Cancer Research Institute, Tokyo*  
 Bernhard Horsthemke  
*University of Essen*  
 Pieter de Jong  
*Lawrence Livermore National Laboratory*  
 David Kemp  
*Walter and Eliza Hall*  
*Institute of Medical Research*  
 Kenneth Kidd  
*Yale University School of Medicine*  
 Ulf Landegren  
*University of Uppsala Medical Center*  
 Eric Lander  
*Whitehead Institute of*  
*Medical Research*  
 Hans Lehrach  
*Imperial Cancer Research Fund*  
 Kary Mullis  
*La Jolla, California*  
 David Nelson  
*Baylor College of Medicine*  
 Debbie Nickerson  
*California Institute of Technology*  
 Svante Paabo  
*University of Munich*  
 Steve Sommer  
*Mayo Foundation*  
 Lap-Chee Tsui  
*Hospital for Sick Children, Toronto*  
 James Weber  
*Marshfield Medical*  
*Research Foundation*  
 Mark Zoller  
*Genentech, Inc.*

**Editor**

Judy Cuddihy  
*Cold Spring Harbor Laboratory*

**Editorial Staff**

Elizabeth Ritcey, Production Editor  
 Christy Kuret, Production Assistant  
 Doris Lawrence, Editorial Secretary  
 Jim Suddaby, Design  
 Advertising  
 Nancy Kuhle

**REVIEW**

- 77 Sequence-tagged Site (STS) Content Mapping of Human Chromosomes: Theoretical Considerations and Early Experiences**  
 Eric D. Green and Philip Green
- 91 PCR-based HLA Class II Typing**  
 Ulf Gyllenstein and Marie Allen
- 99 Utility of PCR for DNA Analysis from Dried Blood Spots on Filter Paper Blotters**  
 Edward R.B. McCabe
- 107 Amplifying DNA from Archeological Remains: A Meeting Report**  
 Svante Pääbo

**RESEARCH**

- 111 Capture PCR: Efficient Amplification of DNA Fragments Adjacent to a Known Sequence in Human and YAC DNA**  
 Maria Lagerström, Jüri Parik, Helena Malmgren, Jason Stewart, Ulf Pettersson, and Ulf Landegren
- 120 Rapid and Efficient Cloning of Alu-PCR Products Using Uracil DNA Glycosylase**  
 Paul E. Nisson, Ayoub Rashtchian, and Paul C. Watkins
- 124 OSP: A Computer Program for Choosing PCR and DNA Sequencing Primers**  
 LaDeana Hillier and Philip Green
- 129 Use of a Simplified Single-site PCR to Facilitate Cloning of Genomic DNA Sequences Flanking a Transgene Integration Site**  
 Grant R. MacGregor and Paul A. Overbeek
- 136 Generation of Competitor DNA Fragments for Quantitative PCR**  
 Klaus Überla, Cornelia Platzer, Tibor Diamantstein, and Thomas Blankenstein

**TECHNICAL TIPS**

- 140 Rapid and Reliable Cloning of PCR Products**  
 James B. Lorens
- 142 Slow Inactivation of Dry PCR Templates by UV Light**  
 Marilyn R. Fairfax, Mark A. Metcalf, and Richard W. Cone
- 144 A Simple and Rapid Method to Analyze Specific mRNAs from Few Cells in a Semi-quantitative Way Using the Polymerase Chain Reaction**  
 J. Golay, F. Passerini, and M. Introna
- 146 Rapid, Nonradioactive Screening for Activating *ras* Oncogene Mutations Using PCR-primer Introduced Restriction Analysis (PCR-PIRA)**  
 Daniel R. Jacobson and Tibor Moskovits
- 149 Erratum**

# NuSieve<sup>®</sup> 3:1 Agarose

## Easy-to-Handle Gels for Fine Resolution of Small DNA, RNA, and PCR Products

- Strong, flexible gels for easy handling and rapid processing.
- Reliable separations and blotting of nucleic acids  $\leq 1$  kb.
- Convenient, ready-to-use agarose for quick gel preparation.

To order: (800) 341-1574

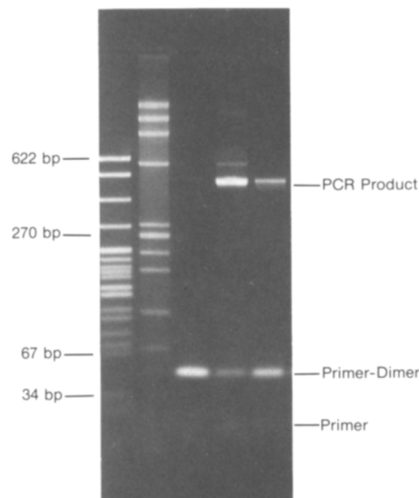
Technical Assistance: (800) 521-0390



FMC BioProducts  
191 Thomaston Street  
Rockland, ME 04841

For Research Use Only. Not for use in diagnostic procedures.  
FMC and NuSieve are trademarks of FMC Corporation. NuSieve agarose -  
See U.S. Patents 3,956,273 - FMC Corporation. The GeneAmp<sup>®</sup> PCR process  
- U.S. Patent 4,683,195, 4,683,202 and 4,965,188 - Cetus Corporation.  
©1991 FMC Corporation

## Resolution of PCR Products and DNA Fragments on a 4% NuSieve 3:1 Agarose Gel



Reader Service No. 136

## Business Information

**Editorial Office:** Cold Spring Harbor Laboratory Press, 1 Bungtown Road, Cold Spring Harbor, New York 11724-2203. Phone: 516-367-8492; FAX 516-367-8532.

*PCR Methods and Applications* (ISSN 1054-9803) is published quarterly for \$120 (U.S. institutional; \$150 R.O.W.), \$40 (individual making personal payment; \$40 R.O.W. surface, \$10 additional for airmail) by Cold Spring Harbor Laboratory Press, 1 Bungtown Road, Cold Spring Harbor, New York 11724. Second class postage pending is paid at Cold Spring Harbor and additional mailing offices. POSTMASTER: Send address changes to Cold Spring Harbor Laboratory, 10 Skyline Drive, Plainview, New York 11803-9729.

**Subscriptions:** Barbara Terry, Subscription Manager. Personal: U.S. \$40; R.O.W. \$40 surface mail, \$10 additional airlift delivery. Institutional: U.S. \$120; R.O.W. \$150. Orders may be sent to Cold Spring Harbor Laboratory Press, Fulfillment Department, 10 Skyline Drive, Plainview, New York 11803-9729. Telephone: Continental U.S. and Canada 1-800-843-4388; all other locations 516-349-1930. FAX 516-349-1946. Personal subscriptions must be prepaid by personal check, credit card, or money order. Claims for missing issues must be received within 4 months of issue date.

**Advertising:** Nancy Kuhle, Advertising Manager, Cold Spring Harbor Laboratory Press, 1 Bungtown Road, Cold Spring Harbor, New York, 11724-2203. Phone: 516-367-8351; FAX 516-367-8532

**Copyright information:** Authorization to photocopy items for internal or personal use, or the internal or personal use of specific clients, is granted

by Cold Spring Harbor Laboratory Press for libraries and other users registered with the Copyright Clearance Center (CCC) Transactional Reporting Service, provided that the base fee of \$3.00 per copy is paid directly to CCC, 21 Congress Street, Salem, Massachusetts 01970 (1054-9803/91 + \$3.00). This consent does not extend to other kinds of copying, such as copying for general distribution for advertising or promotional purposes, for creating new collective works, or for resale.

The methods, products, instructions or ideas contained in or suggested by this journal should be used only by experienced scientific researchers and only in accordance with prudent laboratory safety precautions. Their use by inexperienced or improperly trained individuals could result in serious injury. The publisher does not endorse the claims made by the advertisers in this journal.

Copyright © 1991 by Cold Spring Harbor Laboratory Press